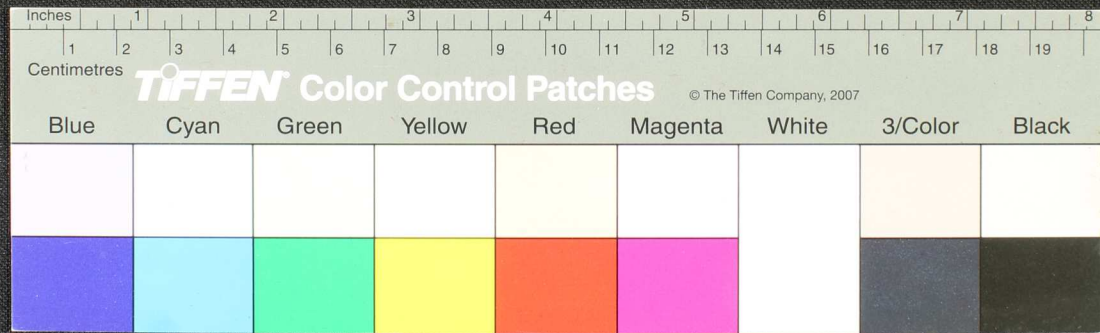


Fragment of an ancient palm-leaf manuscript with handwritten text in Tamil script. The leaf is yellowed and shows significant damage, including several large holes and irregular tears. The text is densely packed in horizontal lines across the length of the fragment.









Handwritten text in Tamil script on a palm leaf manuscript. The text is arranged in approximately 12 horizontal lines across the length of the leaf. The script is finely etched into the surface of the dried leaf. The leaf shows signs of age, including some dark spots and a small hole near the center.

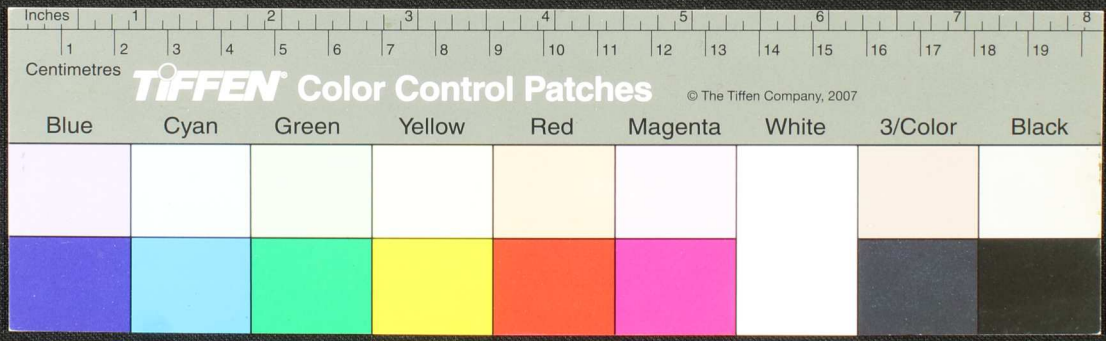




Handwritten text in Tamil script on a palm leaf manuscript. The text is arranged in approximately 15 horizontal lines across the length of the leaf. The leaf shows signs of age, including dark spots, a hole near the center, and irregular edges.

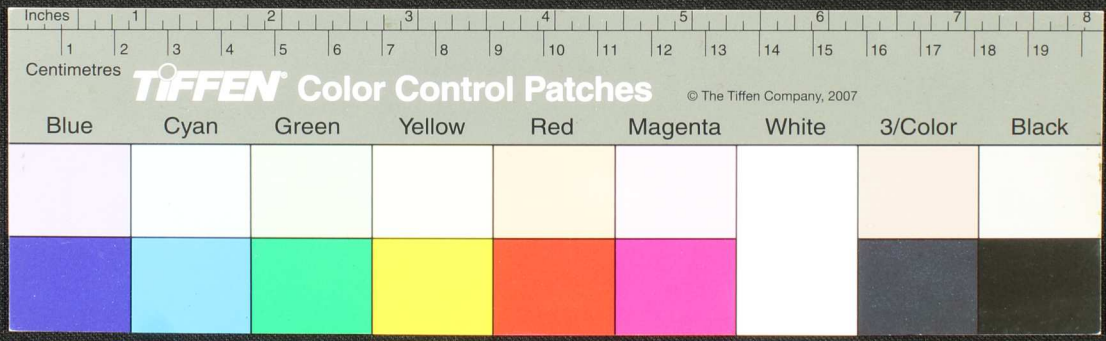








Handwritten text in Tamil script on a palm leaf manuscript. The text is arranged in approximately 15 horizontal lines across the length of the leaf. The script is densely packed and appears to be a form of classical or historical Tamil. The leaf shows signs of age, including dark spots and some damage at the ends.

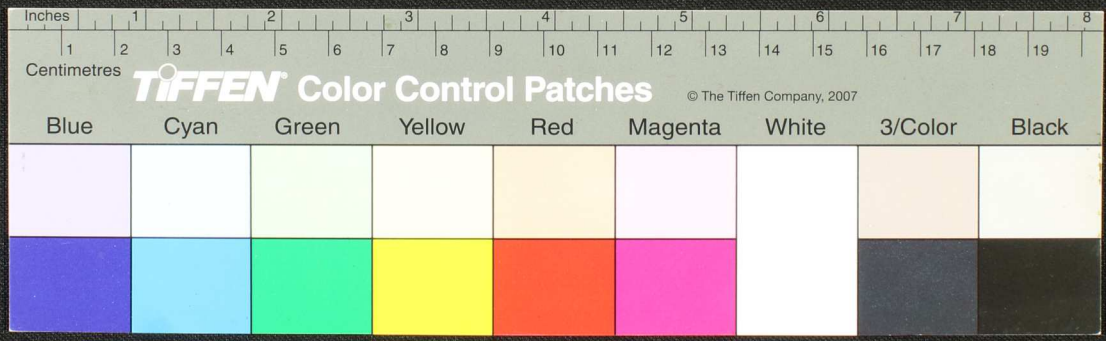




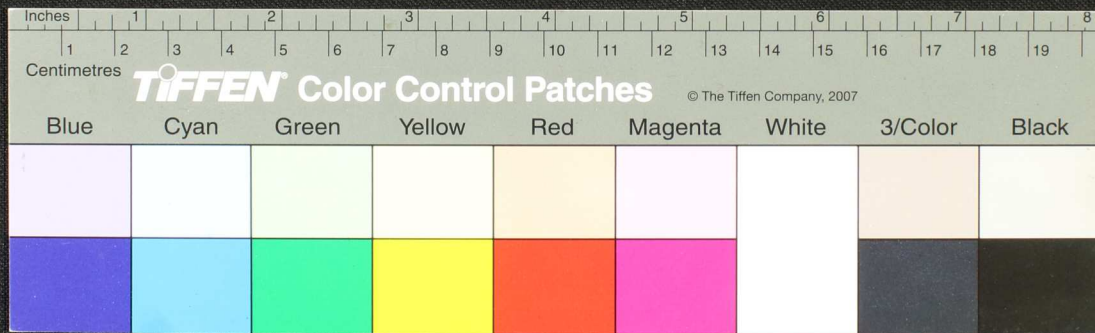
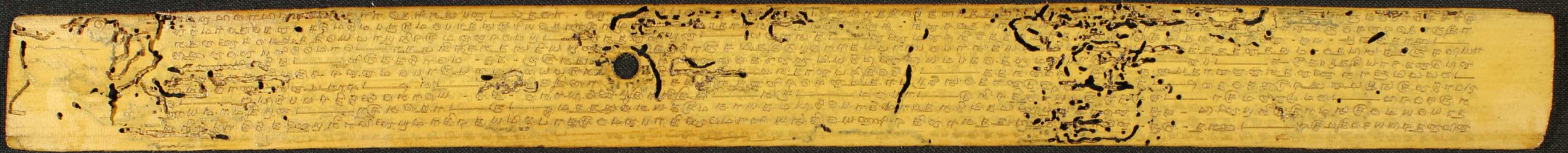




Handwritten text in Tamil script on a palm leaf manuscript. The text is arranged in approximately 15 horizontal lines across the length of the leaf. The script is finely etched into the surface of the dried leaf. The leaf shows signs of age, including a hole near the center and some staining at the ends.













Handwritten text in Tamil script on a palm leaf manuscript. The text is arranged in approximately 10 horizontal lines across the length of the leaf. The script is finely etched into the surface of the dried leaf. There are several dark, irregular spots and a small circular hole on the leaf, likely due to insect damage or natural decay. The leaf is positioned horizontally against a dark background.





Handwritten text in Tamil script on a palm leaf manuscript. The text is arranged in approximately 15 horizontal lines across the length of the leaf. The script is finely etched into the surface of the dried leaf. There are some dark spots and irregularities on the leaf, possibly due to age or damage.









Handwritten Tamil script on a palm leaf manuscript. The text is arranged in approximately 10 horizontal lines across the length of the leaf. The script is finely etched into the surface of the dried leaf. A small circular hole is visible near the center of the leaf, which is a traditional feature used for threading a cord to bind multiple leaves together into a book format. The leaf shows signs of age, with some darkening and wear, particularly along the edges and in the middle section.

















Handwritten text in Tamil script on a palm leaf manuscript. The text is densely packed and runs horizontally across the length of the leaf. There are some dark spots and a hole on the leaf, possibly due to insect damage or age. The script is a traditional form of the Tamil language.

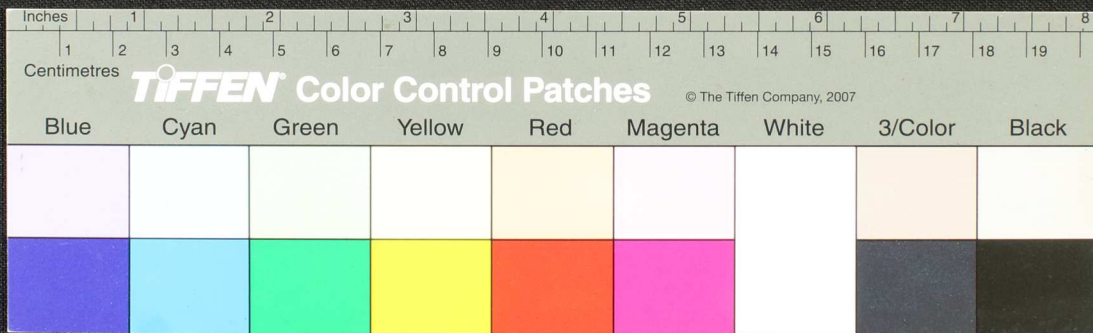








Handwritten text in Tamil script on a palm leaf manuscript. The text is densely packed and spans the length of the leaf. A circular hole is visible near the center, used for binding multiple leaves together.



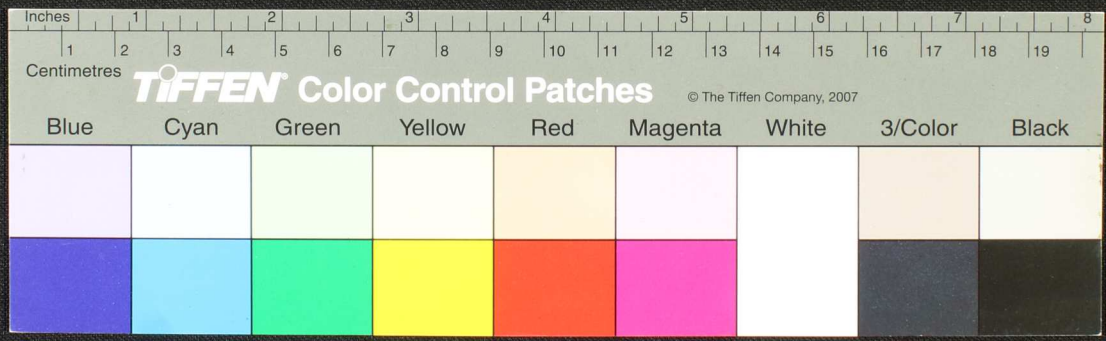


Handwritten Tamil script on a palm leaf manuscript. The text is arranged in approximately 10 horizontal lines across the length of the leaf. The script is densely packed and appears to be a form of classical Tamil. The leaf shows signs of age, including some dark spots and wear at the edges.





Handwritten Tamil script on a palm leaf manuscript. The text is densely packed and spans the length of the leaf. A small circular hole is visible near the center, used for threading a cord to bind multiple leaves together. The script is written in a traditional style, with some characters appearing to be in a different dialect or historical form of Tamil. The leaf shows signs of age, including discoloration and some wear.





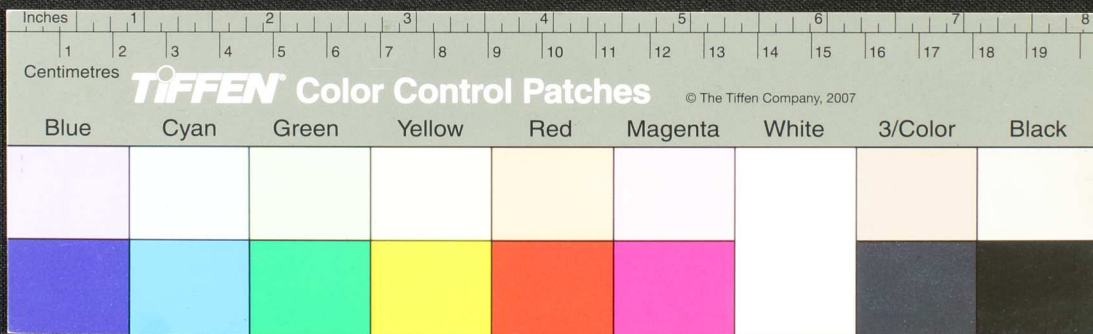






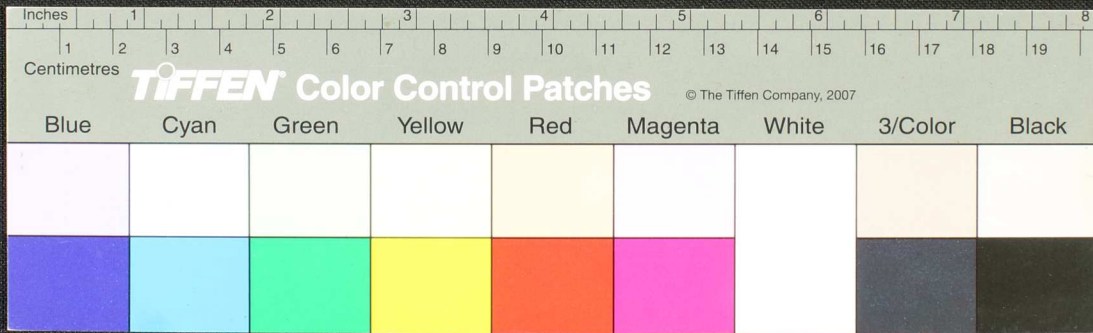


Handwritten text in Tamil script on a palm leaf manuscript. The text is arranged in approximately 15 horizontal lines across the length of the leaf. The script is finely etched into the surface of the dried leaf. There are several dark spots and irregularities on the leaf, possibly due to age or damage. On the left side, there are some larger, more decorative markings that might represent a signature or a specific symbol.



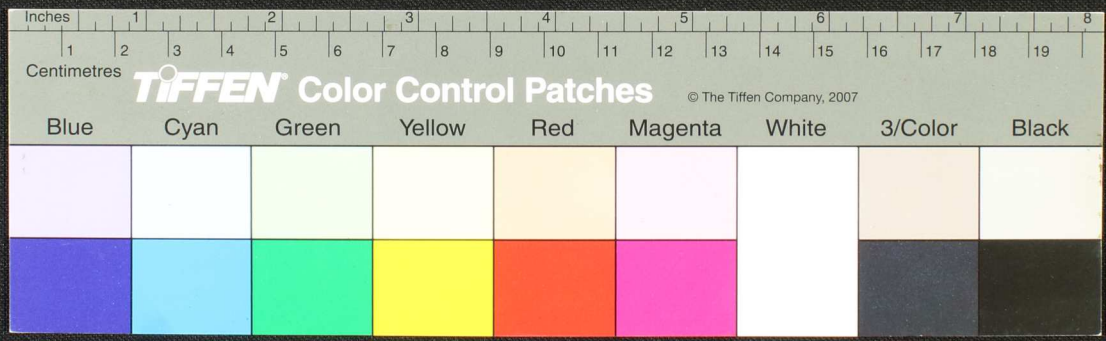


Handwritten Tamil script on a palm leaf manuscript. The text is densely packed and runs horizontally across the length of the leaf. The leaf shows signs of age, including dark spots and some damage.





Handwritten text in Tamil script on a palm leaf manuscript. The text is densely packed and runs horizontally across the length of the leaf. Some characters are circled in red ink, possibly indicating specific words or names. The leaf shows signs of age, including some staining and wear at the edges.

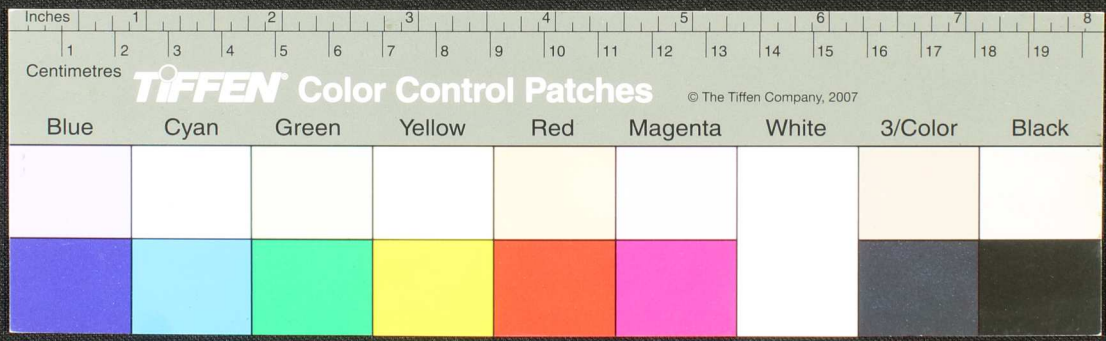






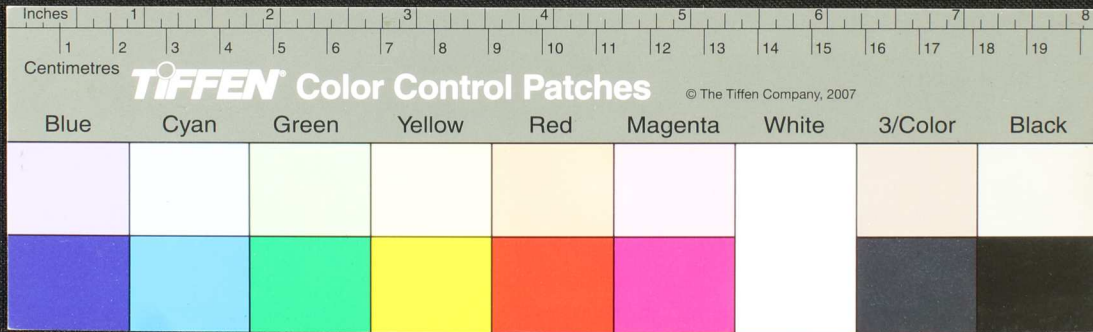


Handwritten Tamil script on a palm leaf manuscript. The text is densely packed and runs horizontally across the length of the leaf. The leaf shows signs of age, including dark spots and some surface damage.





Handwritten text in Tamil script on a palm leaf manuscript. The text is densely packed and runs horizontally across the length of the leaf. There are some dark spots and irregularities on the leaf, possibly due to age or damage.





Handwritten text in Tamil script on a palm leaf manuscript. The text is arranged in approximately 15 horizontal lines across the length of the leaf. The script is finely etched into the surface of the dried leaf. There are several dark, irregular spots and stains, particularly on the right side, which appear to be ink bleed-through or damage to the leaf. A small circular hole is visible near the center of the leaf.





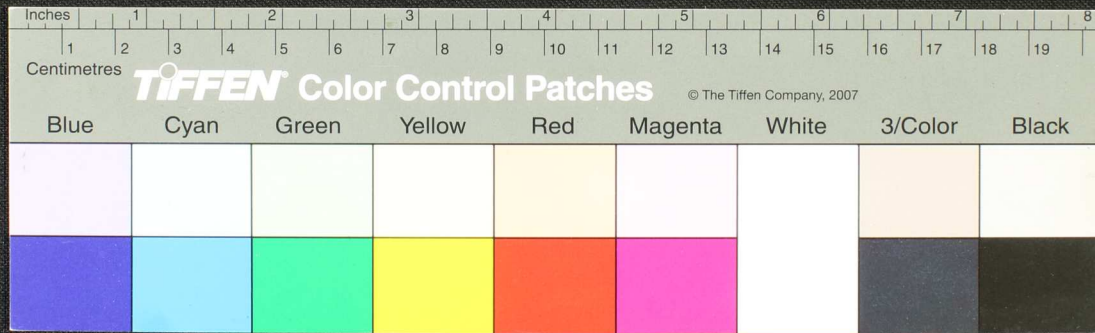






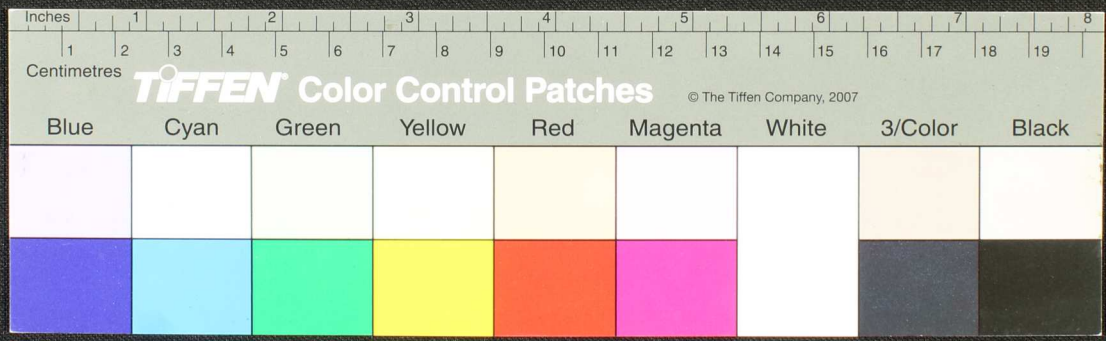


Handwritten text in Tamil script on a palm leaf manuscript. The text is arranged in approximately 12 horizontal lines across the length of the leaf. The script is finely etched into the surface of the dried leaf. There are several dark spots and irregularities on the leaf, likely due to age or environmental factors. The leaf is positioned horizontally against a dark background.





Handwritten Tamil script on a palm leaf manuscript. The text is arranged in approximately 15 horizontal lines across the length of the leaf. The script is finely etched into the surface of the dried leaf. There are some dark spots and irregularities on the leaf, possibly due to age or damage.









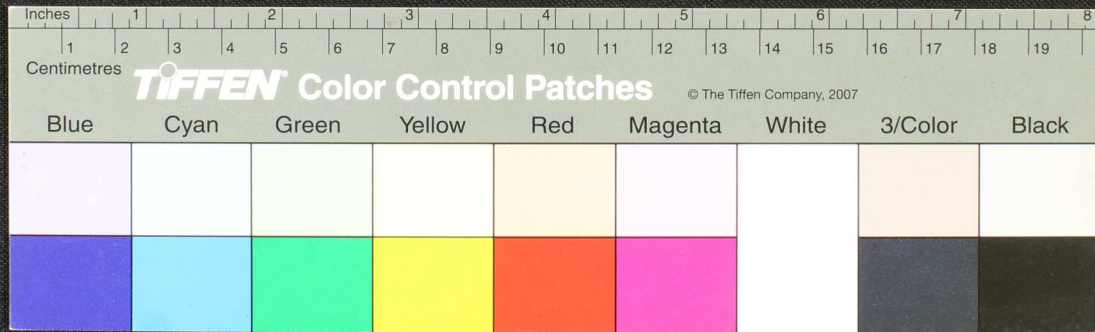








Handwritten Tamil script on a palm leaf manuscript. The text is arranged in approximately 15 horizontal lines across the length of the leaf. The script is densely packed and appears to be a form of classical Tamil. There are several dark, irregular marks and holes along the length of the leaf, likely due to insect damage or environmental factors. A small circular hole is visible near the center of the leaf.

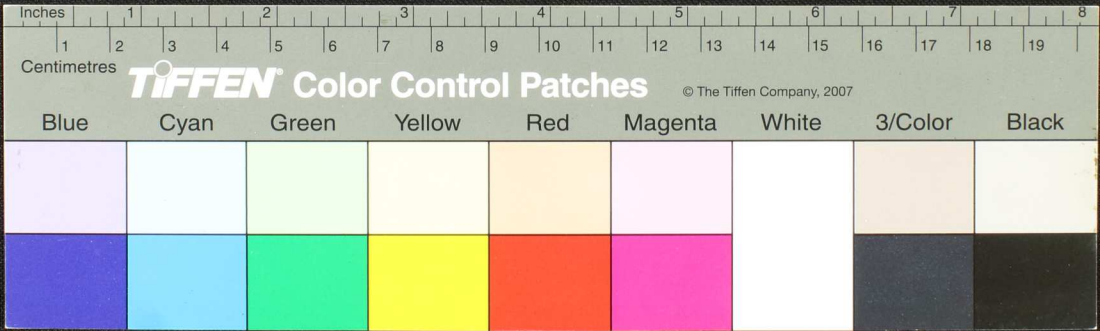








Handwritten text in Tamil script on a palm leaf manuscript. The text is densely packed and spans the length of the leaf. There are some dark spots and a hole on the left side, likely due to insect damage or age. The script is in an older form of the Tamil language.

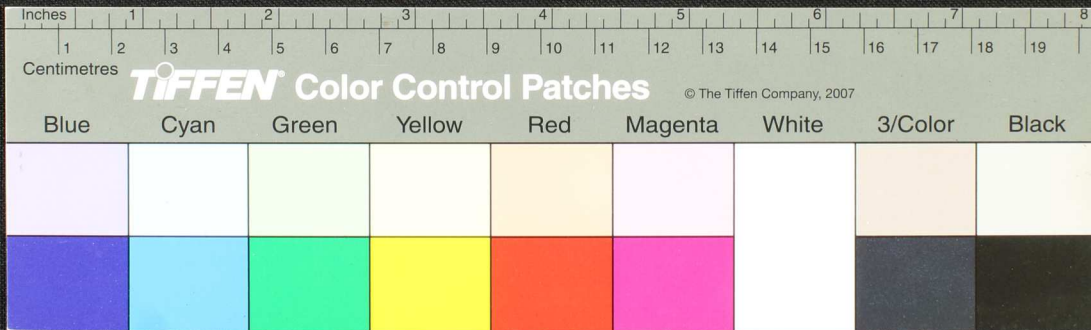








Handwritten text in Tamil script on a palm leaf manuscript. The text is densely packed and runs horizontally across the length of the leaf. There are several dark spots and irregularities on the leaf, possibly due to damage or ink bleed-through from the reverse side. The script is a traditional form of the Tamil language.









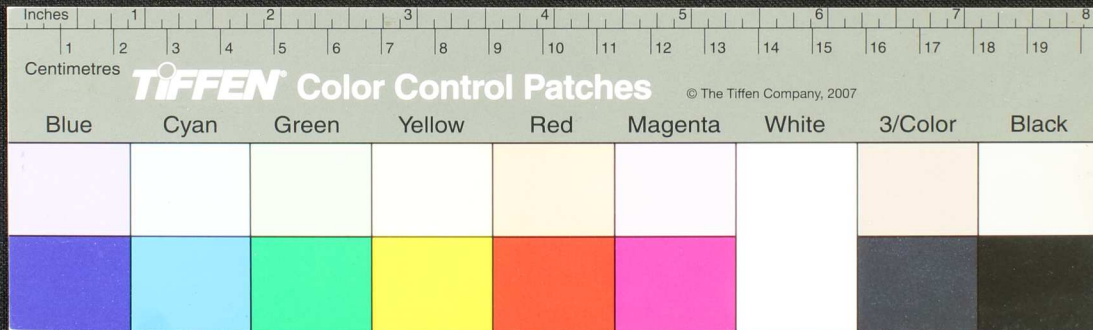








Handwritten Tamil script on a palm leaf manuscript strip. The text is arranged in approximately 12 horizontal lines across the length of the leaf. The script is finely etched into the surface of the dried leaf. The leaf shows signs of age, including dark spots and some physical damage, particularly at the ends and along the right edge.





















Handwritten text in Tamil script on a palm leaf manuscript. The text is densely packed and spans the entire length of the leaf. The script is in an older form, characteristic of traditional Tamil manuscripts. The leaf shows signs of age, including dark spots and some damage.

