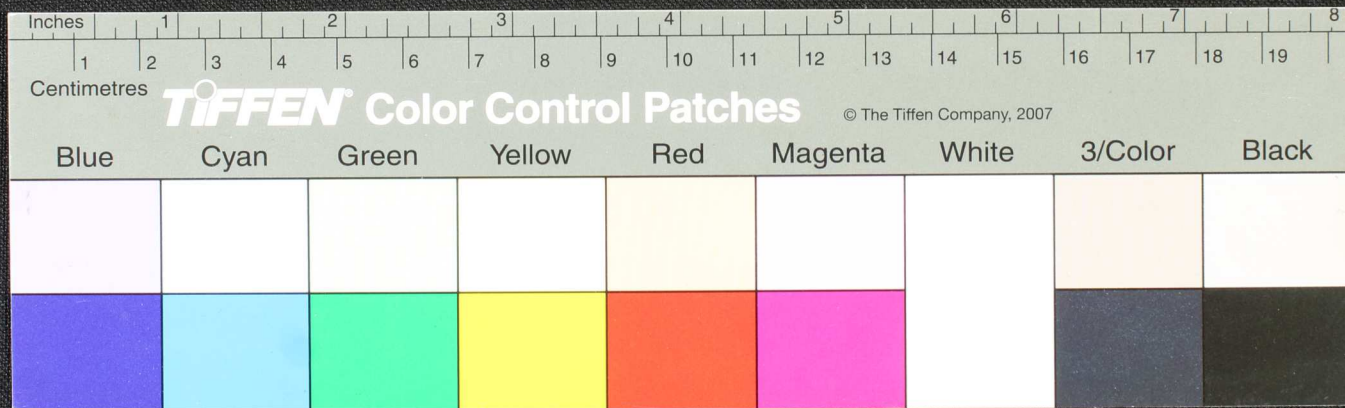




Handwritten Tamil script on a palm leaf manuscript. The text is densely packed and runs horizontally across the length of the leaf. There are two circular holes on the left side, likely for binding, and a small, dark, oval-shaped mark on the right side. The leaf shows signs of age and wear, with some dark spots and irregular edges.

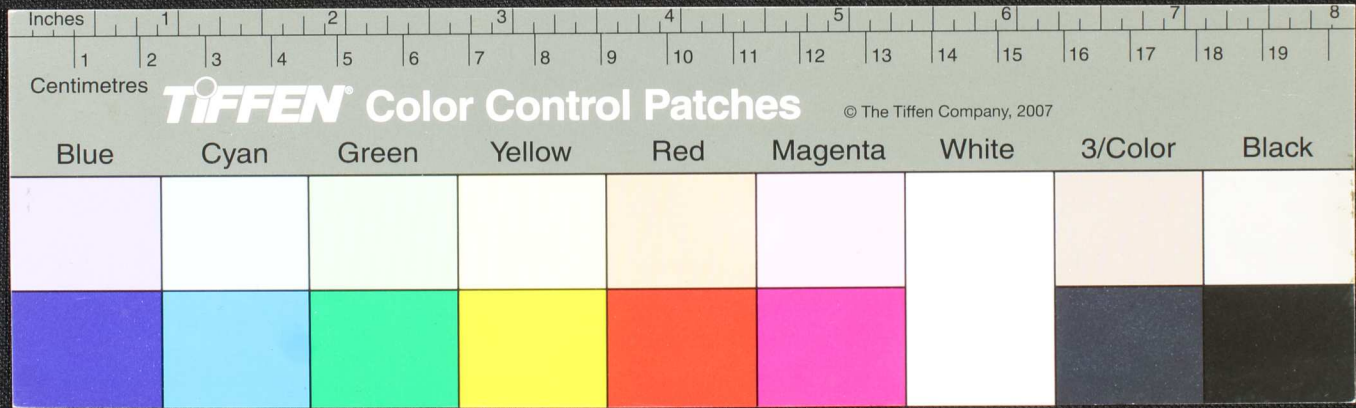






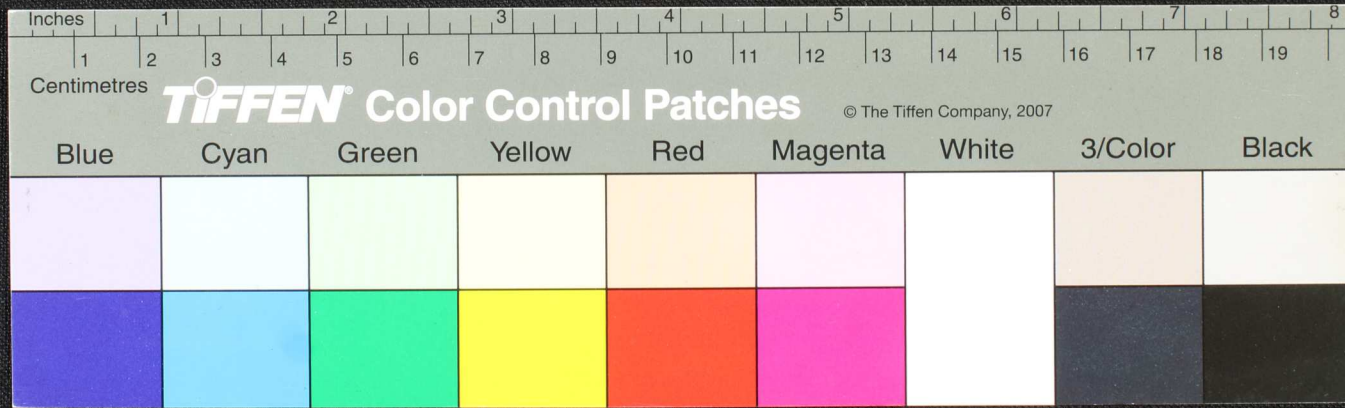


Handwritten Tamil script on a palm leaf manuscript. The text is arranged in approximately 10 columns across the length of the leaf. The script is finely etched into the surface of the dried leaf. There are two circular holes visible, which were traditionally used for threading a cord to bind multiple leaves together into a book format.



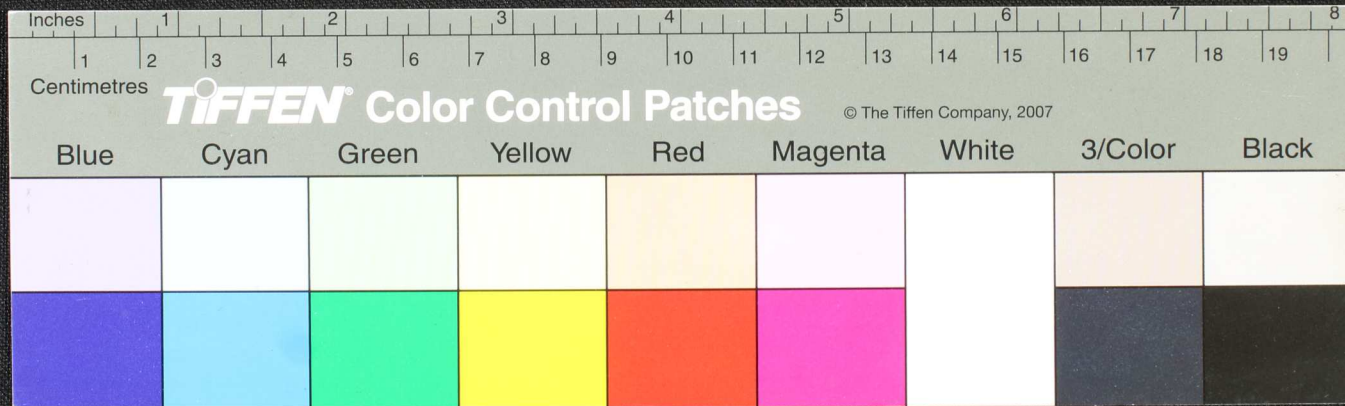


Handwritten Tamil script on a palm leaf manuscript. The text is arranged in four columns, with some characters circled in red ink. The script appears to be a form of classical Tamil, possibly including religious or philosophical content. The leaf shows signs of age and wear, with two circular holes visible.



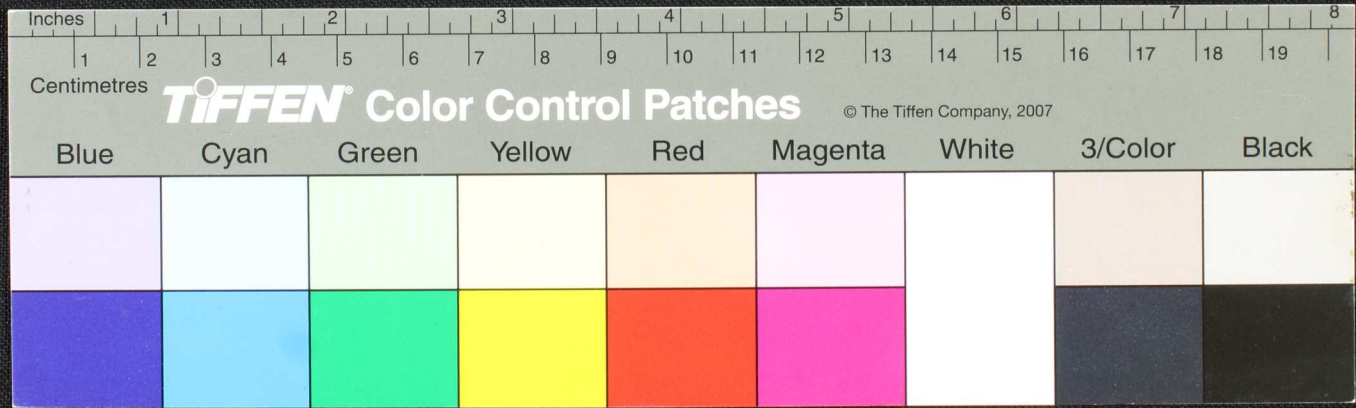


Handwritten Tamil script on a palm leaf manuscript. The text is arranged in approximately five columns from left to right. The script is finely etched into the surface of the dried leaf. Two circular holes are visible, which were traditionally used for threading a cord to bind multiple leaves together into a book format.





Handwritten text in Tamil script on a palm leaf manuscript. The text is arranged in several lines across the length of the leaf. On the left side, there is a small, simple drawing of a tree or plant. The script is densely packed and appears to be a form of historical or religious text.

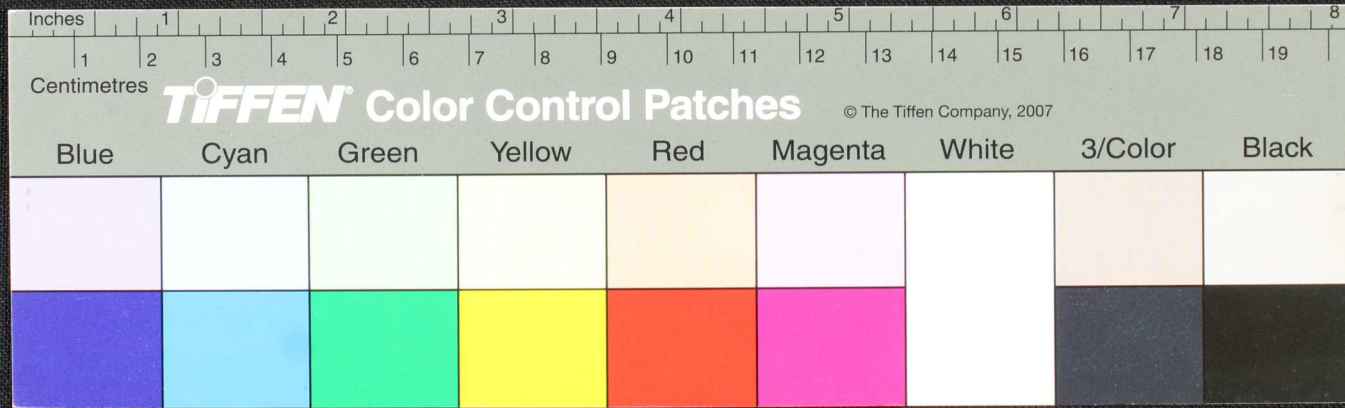








Handwritten text in Tamil script on a palm leaf manuscript. The text is arranged in approximately six columns across the length of the leaf. The script is finely etched into the surface of the dried leaf.





Handwritten Tamil script on a palm leaf manuscript. The text is arranged in approximately 10 columns across the length of the leaf. The script is finely etched into the surface of the dried leaf. There are several dark, irregular spots and holes scattered across the leaf, likely due to insect damage or mold. The leaf is yellowed with age and shows signs of wear and tear, particularly on the left side.

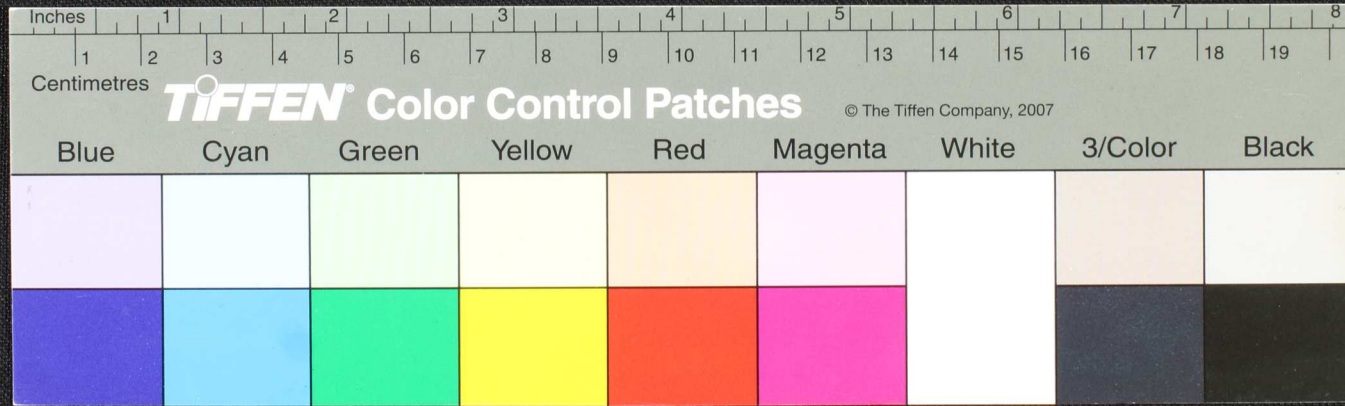








Handwritten text in Tamil script on a palm leaf manuscript. The text is arranged in approximately six vertical columns. The script is finely etched into the surface of the dried leaf. The columns contain various lines of text, some appearing to be a list or a series of entries. There are some dark spots and irregularities on the leaf, possibly due to age or damage.





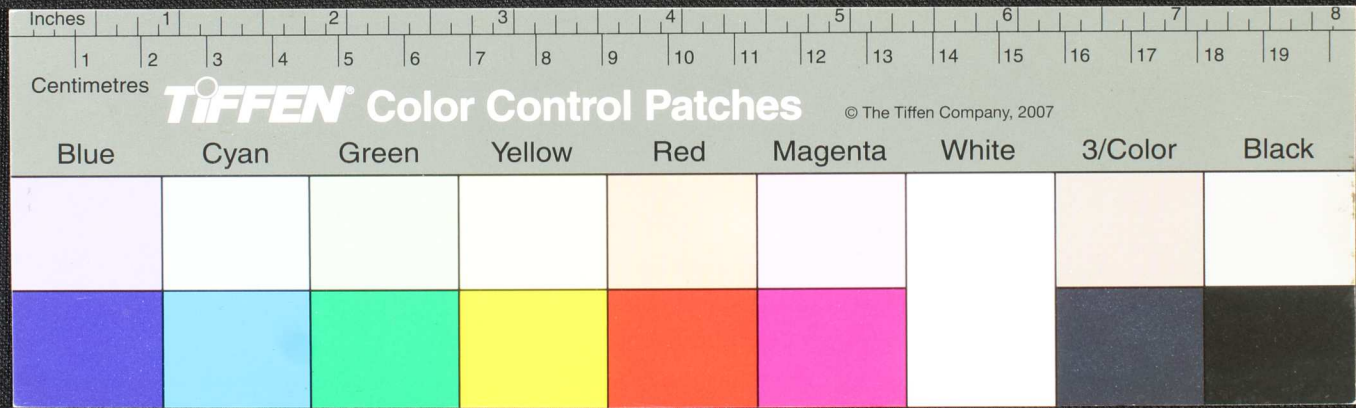






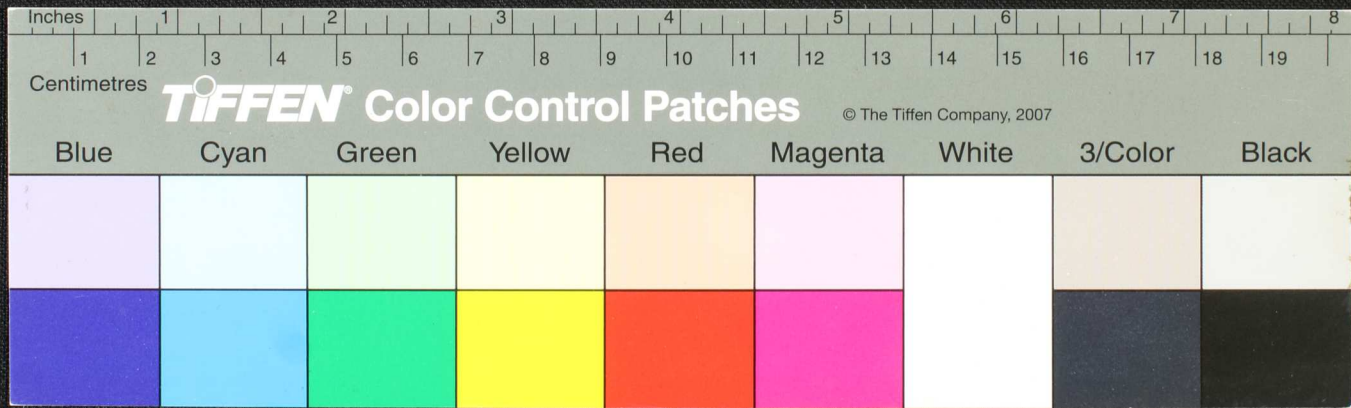


Handwritten Tamil script on a palm leaf manuscript. The text is arranged in approximately 10 horizontal lines across the length of the leaf. The script is in an older form of the Tamil language. The leaf shows signs of age, including some staining and two circular holes, likely from a traditional binding method.





Handwritten Tamil script on a palm leaf manuscript. The text is arranged in approximately 12 columns across the length of the leaf. The script is finely etched into the surface of the dried leaf. The leaf shows signs of age, including some dark spots and irregular edges.





Handwritten text in Tamil script on a palm leaf manuscript. The text is arranged in several columns across the length of the leaf. The script is finely etched into the surface of the dried leaf. There are some dark spots and a hole on the leaf, likely due to age or insect damage.





Handwritten Tamil script on a palm leaf manuscript. The text is arranged in approximately 12 horizontal lines. On the left side, there is a vertical inscription: 'நம்மாலை யச்சுறையை'. On the right side, there are decorative flourishes. The leaf shows signs of age and wear, with some darkening and irregular edges.





