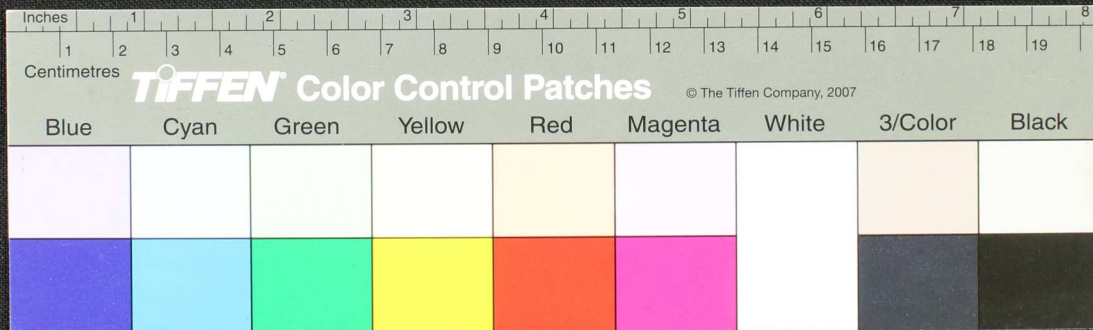




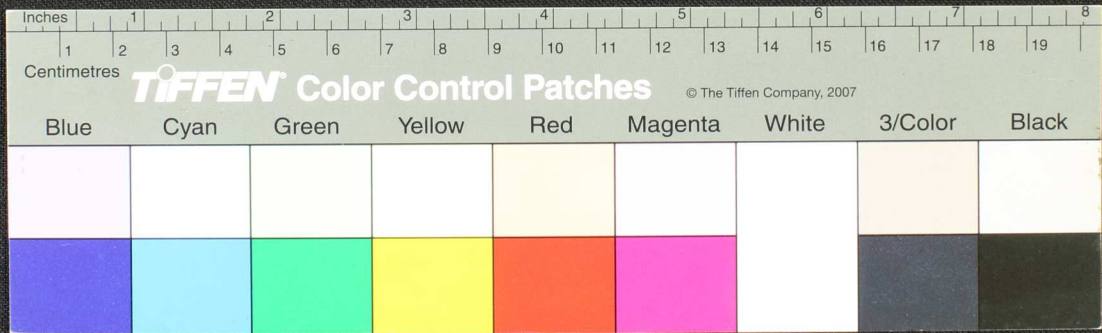




Handwritten Tamil script on a palm leaf manuscript. The text is densely packed and runs horizontally across the length of the leaf. The script is in an older form of the Tamil language, with some characters appearing to be in a different script or dialect. The leaf shows signs of age, including discoloration and some damage, particularly at the ends.

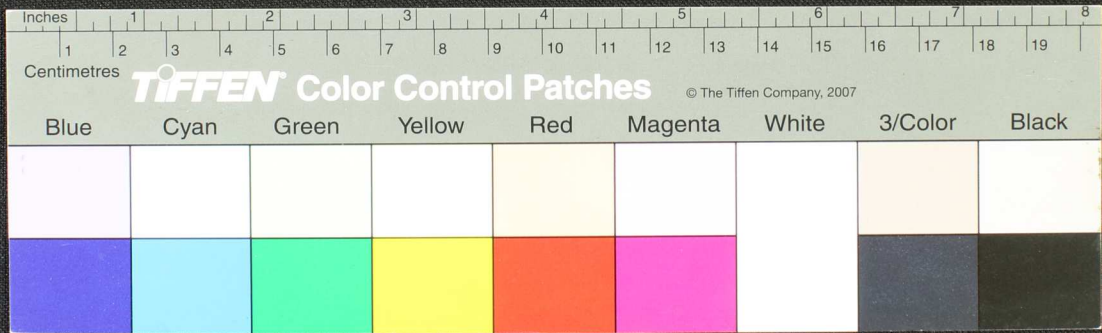


Handwritten Tamil script on a palm leaf manuscript. The text is densely packed and runs horizontally across the length of the leaf. The leaf shows signs of age and wear, with some dark spots and irregular edges.

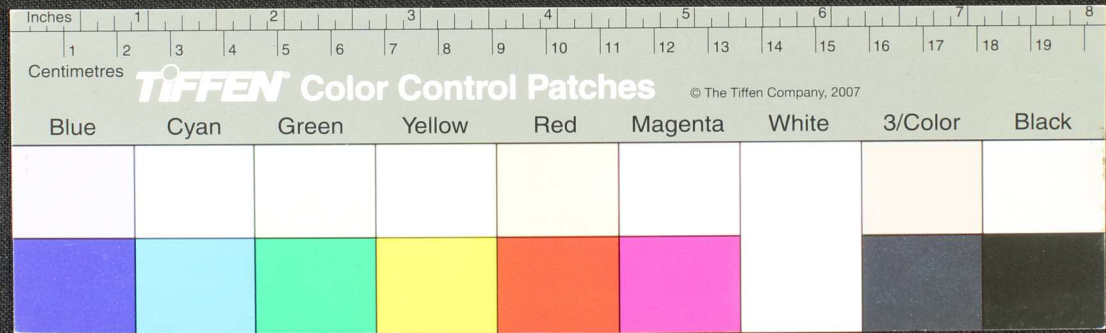




Handwritten Tamil script on a palm leaf manuscript strip. The text is arranged in approximately 10 horizontal lines across the length of the leaf. The script is dense and appears to be a form of classical or historical Tamil. The leaf shows signs of age and wear, with some dark spots and irregular edges.



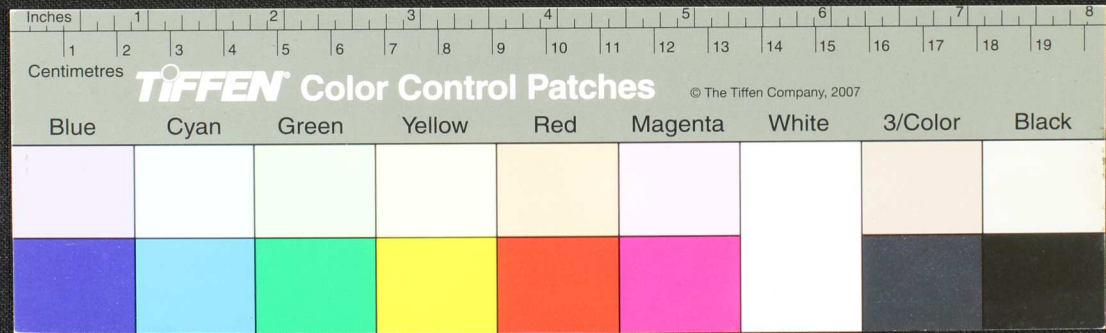
சிவனார் உருத்திரகுமரருடைய கருணை மனனுடைய உருத்திரகுமரருடைய கருணை மனனுடைய  
 உருத்திரகுமரருடைய கருணை மனனுடைய உருத்திரகுமரருடைய கருணை மனனுடைய உருத்திரகுமரருடைய  
 கருணை மனனுடைய உருத்திரகுமரருடைய கருணை மனனுடைய உருத்திரகுமரருடைய கருணை மனனுடைய  
 உருத்திரகுமரருடைய கருணை மனனுடைய உருத்திரகுமரருடைய கருணை மனனுடைய உருத்திரகுமரருடைய  
 கருணை மனனுடைய உருத்திரகுமரருடைய கருணை மனனுடைய உருத்திரகுமரருடைய கருணை மனனுடைய  
 உருத்திரகுமரருடைய கருணை மனனுடைய உருத்திரகுமரருடைய கருணை மனனுடைய உருத்திரகுமரருடைய  
 கருணை மனனுடைய உருத்திரகுமரருடைய கருணை மனனுடைய உருத்திரகுமரருடைய கருணை மனனுடைய  
 உருத்திரகுமரருடைய கருணை மனனுடைய உருத்திரகுமரருடைய கருணை மனனுடைய உருத்திரகுமரருடைய





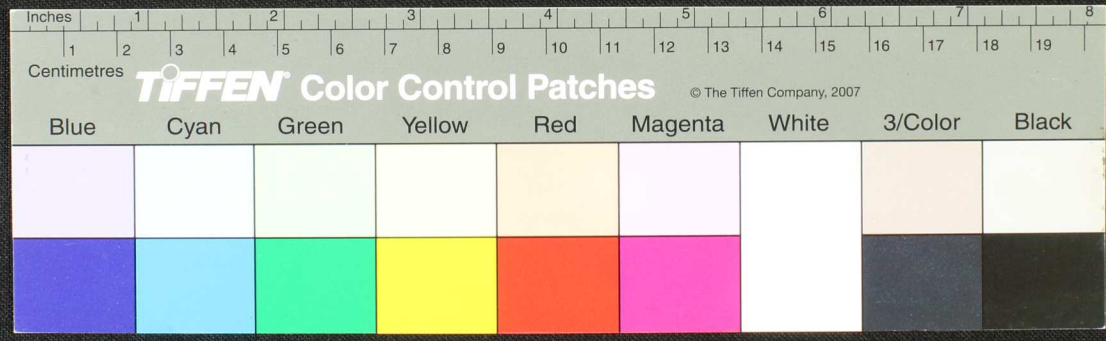


இந்நாள் உலகத்தின் மூன்று எதிலாவதொன்றை உலகமே புகழ்க்குமென்று சொல்லுகிறார். நான் அந்த மூன்று எதிலும்  
 ன்றவையெல்லாம் புகழ்க்குகிறேன். முதல் எது உலகமே புகழ்க்கும் அது நான். இரண்டாம் எது உலகமே புகழ்க்கும் அது நான். மூன்றாம் எது உலகமே புகழ்க்கும் அது நான்.





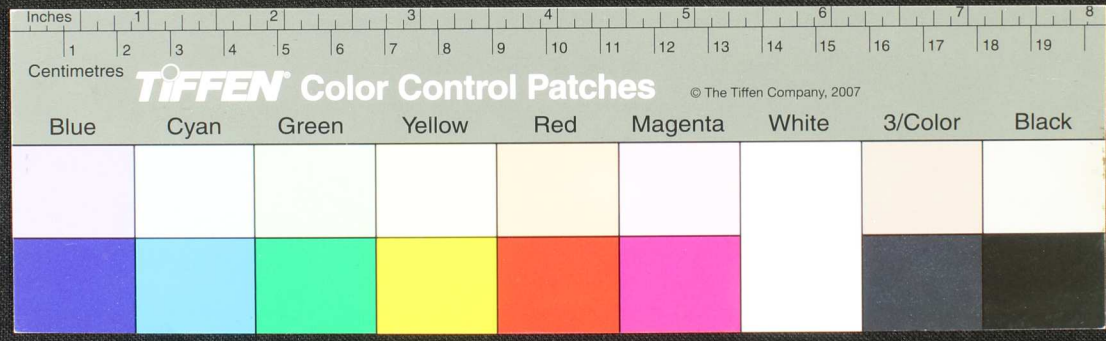
Handwritten Tamil script on a palm leaf manuscript. The text is densely packed and runs horizontally across the length of the leaf. There are several large, dark, irregular holes or damage marks scattered throughout the leaf, particularly in the middle and right sections, which obscure some of the characters. The script appears to be a form of classical Tamil, possibly including religious or philosophical content, as suggested by the opening characters which resemble 'திருமலர்' (Tirumalar).







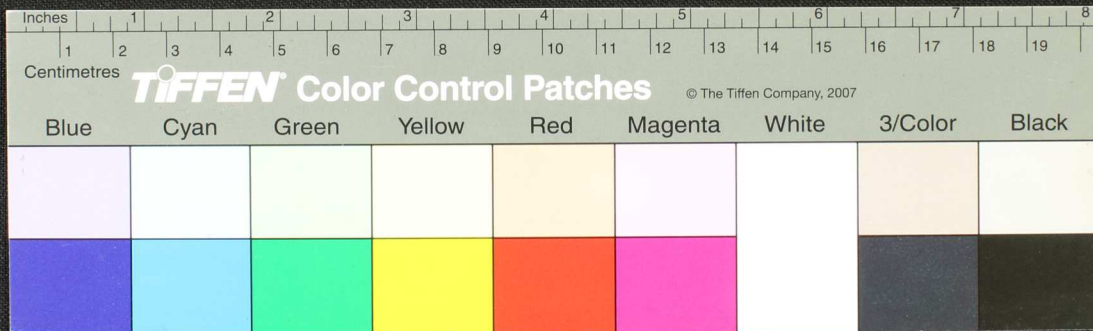
கையெழுத்து எழுத்துவகுந் தமரடுசையடுகெடு...  
 மதநரை தாய்ச்சரத்திரனுடையவை...  
 கையெழுத்து வையகுதவகுமசத்துவரை...  
 உலம்- நயவடுமணடுகெடு...  
 உரு- திடடுசுசுரத்திக்...







Handwritten Tamil script on a palm leaf manuscript. The text is densely packed and runs horizontally across the length of the leaf. There are several large, dark, irregular marks or stains, possibly from ink or damage, obscuring parts of the script. The leaf is yellowish-brown with some darker spots.



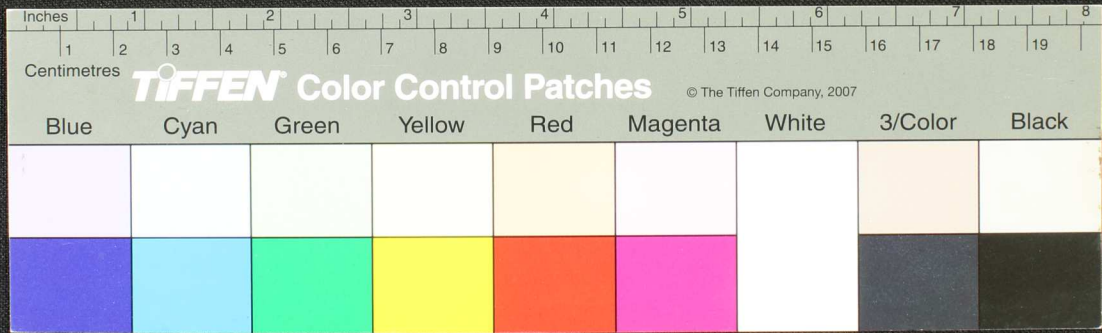




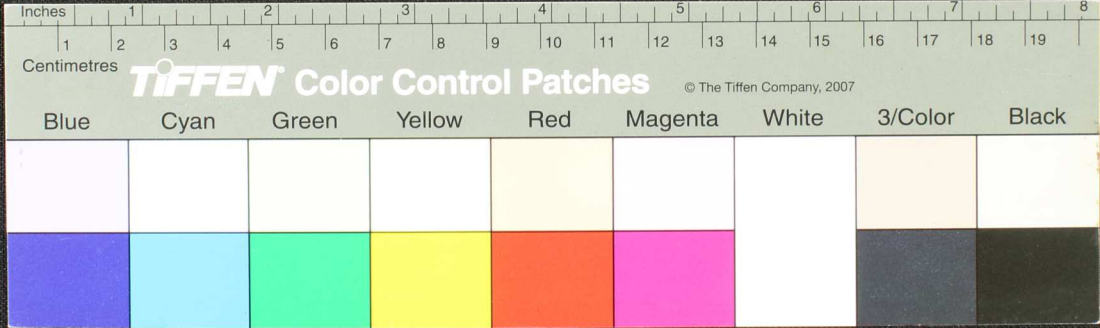




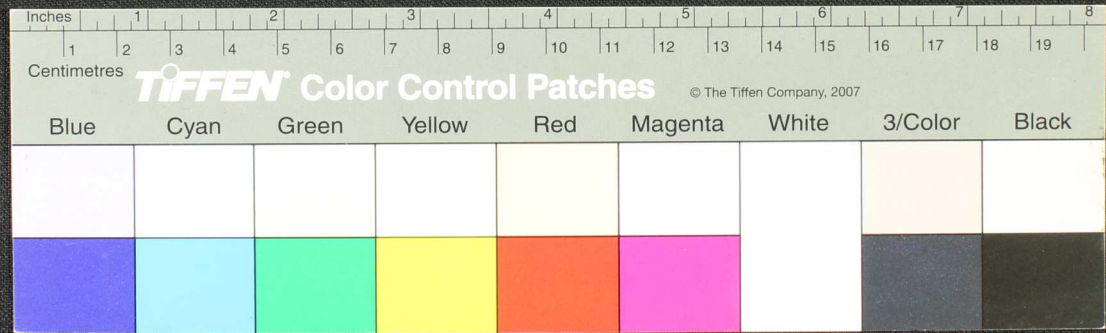
Handwritten Tamil script on a palm leaf manuscript. The text is densely packed and runs horizontally across the length of the leaf. The script is in an older form of the Tamil language, with some characters appearing slightly different from modern Tamil. The leaf shows signs of age, including some dark spots and wear at the edges.



Handwritten Tamil script on a palm leaf manuscript. The text is densely packed and spans the entire length of the leaf. It appears to be a historical record or a religious text, given the context of such artifacts. The script is written in a traditional style with clear letterforms.



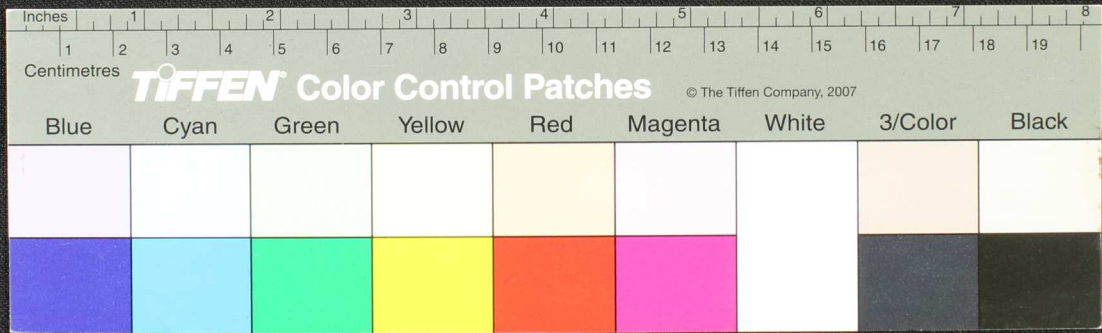
Handwritten Tamil script on a palm leaf manuscript. The text is arranged in approximately 10 horizontal lines across the length of the leaf. The script is finely etched into the surface of the dried leaf. The leaf shows signs of age, including some dark spots and wear at the ends.







Handwritten Tamil script on a palm leaf manuscript. The text is densely packed and runs horizontally across the length of the leaf. The leaf shows signs of age and wear, with some dark spots and a small hole near the center. On the left side, there are some faint markings that appear to be a date or reference number, possibly '1890'.





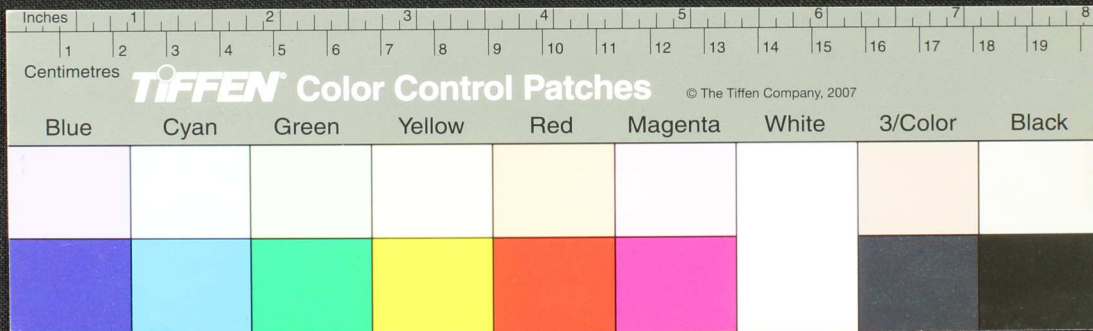








Handwritten Tamil script on a palm leaf manuscript. The text is densely packed and runs horizontally across the length of the leaf. There are two distinct circular holes, likely from traditional binding methods. The leaf shows signs of age and wear, with some darkening and irregular patterns.

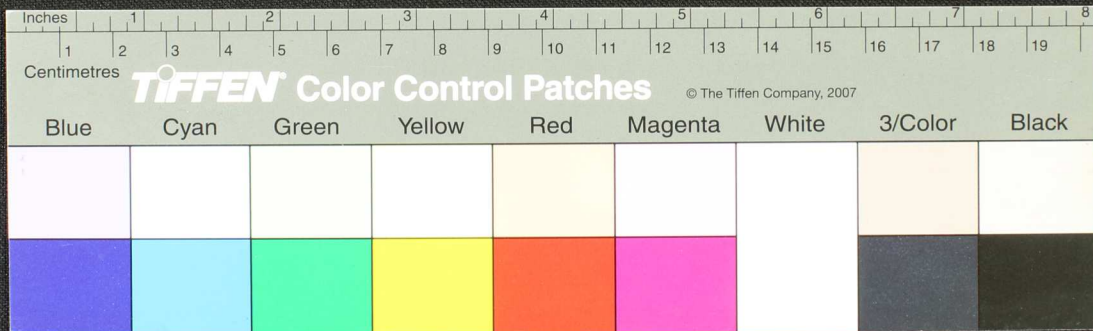




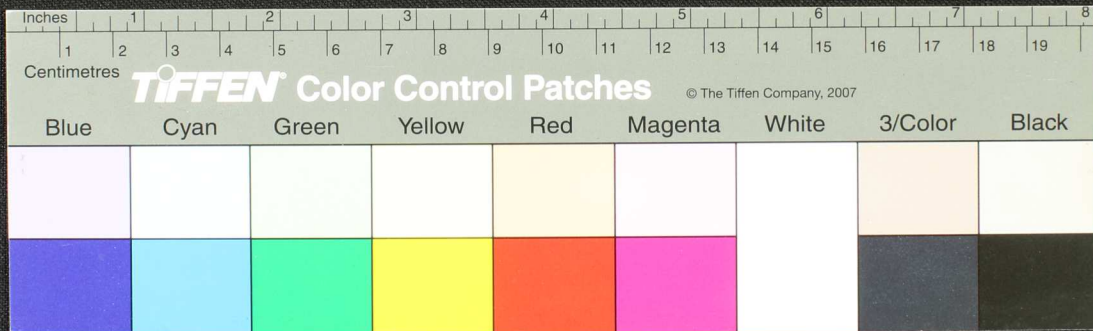




Handwritten Tamil script on a palm leaf manuscript. The text is densely packed and runs horizontally across the length of the leaf. The leaf shows signs of age and wear, with some dark spots and irregular edges.



Handwritten text in Tamil script on a palm leaf manuscript. The text is densely packed and spans the length of the leaf, which is slightly curved and shows signs of wear and damage at the ends.

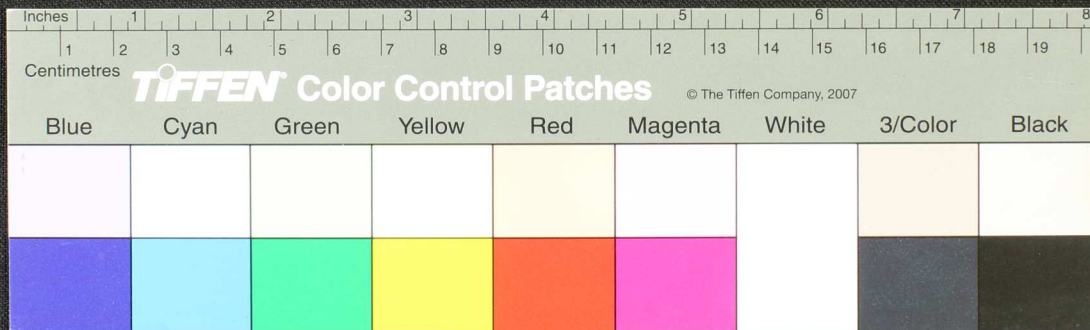






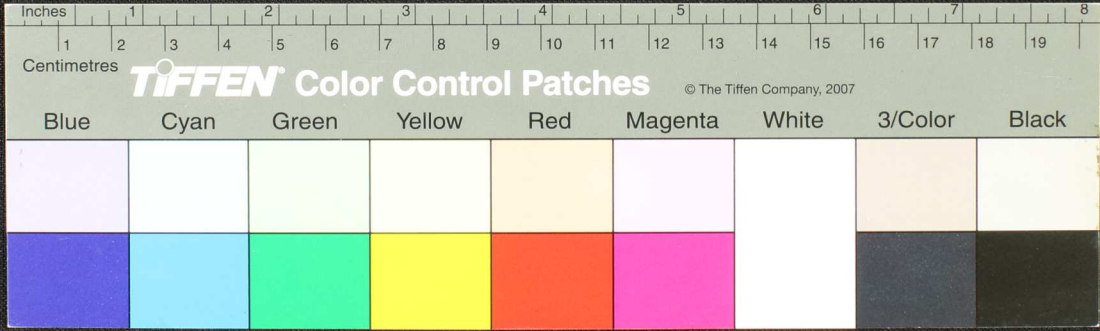


Handwritten Tamil script on a palm leaf manuscript. The text is densely packed and runs horizontally across the length of the leaf. The script is in an older form of the Tamil language, with some characters appearing slightly different from modern Tamil. The leaf shows signs of age, including dark spots and some damage, particularly towards the right end.

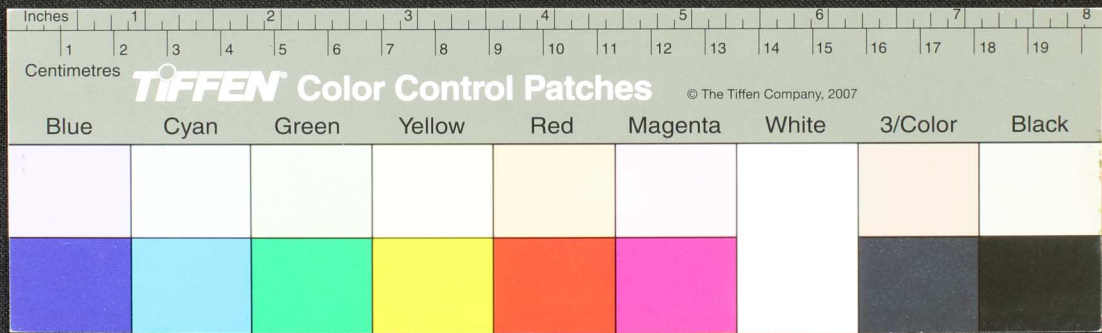




Handwritten text in Tamil script on a palm leaf manuscript. The text is densely packed and spans the length of the leaf. On the left side, there are some marginal notes or a separate column of text, including the characters "நா லு விதி" and "புள்ளி கட்டி".



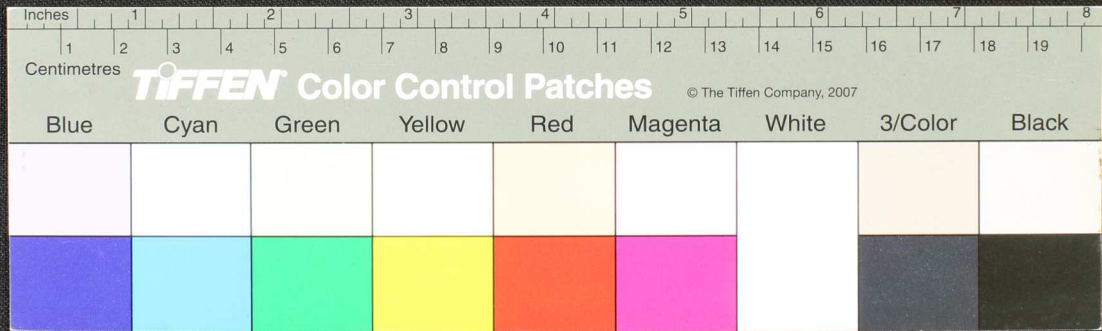
Handwritten Tamil script on a palm leaf manuscript. The text is arranged in approximately 10 horizontal lines across the length of the leaf. The script is finely etched into the surface of the dried leaf. The leaf shows signs of age, including some dark spots and irregular edges.





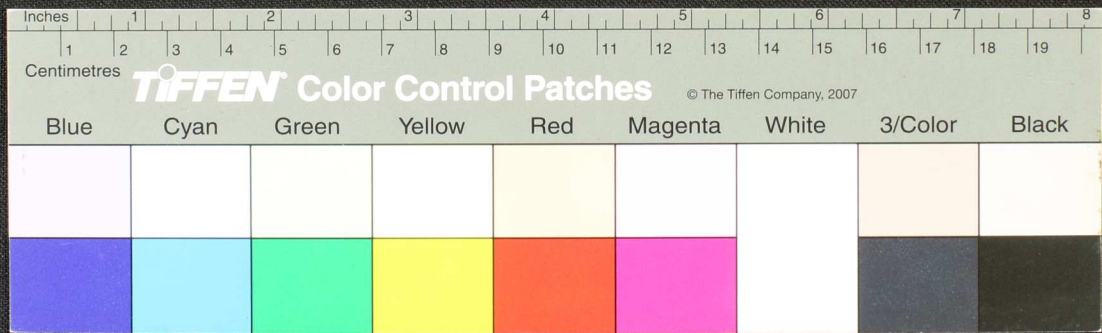


Handwritten Tamil script on a palm leaf manuscript. The text is densely packed and runs horizontally across the length of the leaf. The leaf shows signs of age and wear, with some fraying at the edges.

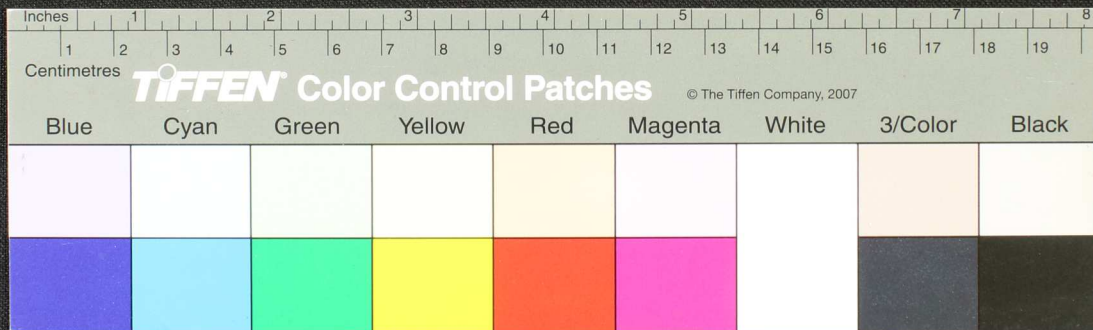




Handwritten Tamil script on a palm leaf manuscript. The text is densely packed and runs horizontally across the length of the leaf. The leaf shows signs of age and wear, with some fraying at the ends.



Handwritten Tamil script on a palm leaf manuscript. The text is densely packed and runs horizontally across the length of the leaf. The leaf shows signs of age, including dark spots and some damage at the ends.

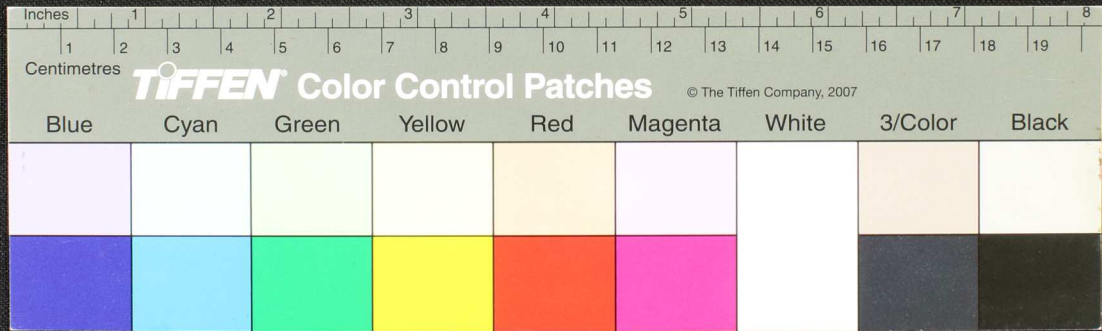




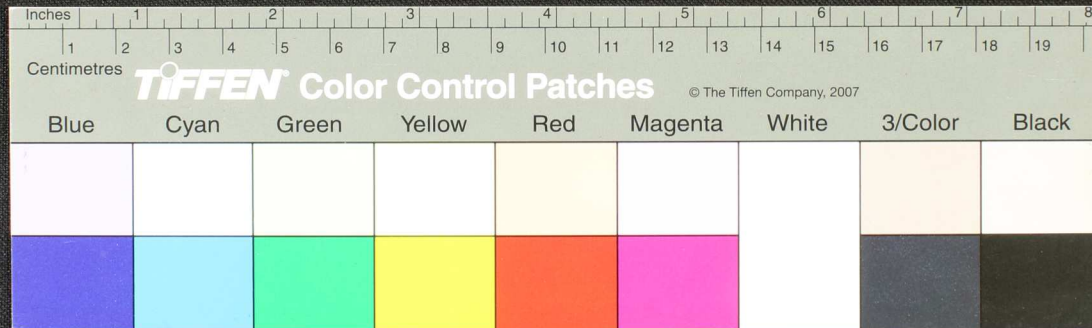
Handwritten Tamil script on a palm leaf manuscript. The text is densely packed and runs horizontally across the length of the leaf. The leaf shows signs of age and wear, with some dark spots and irregular edges.



Handwritten Tamil script on a palm leaf manuscript. The text is densely packed and runs horizontally across the length of the leaf. The leaf shows signs of age and damage, with irregular dark spots and some missing sections, particularly on the left side.



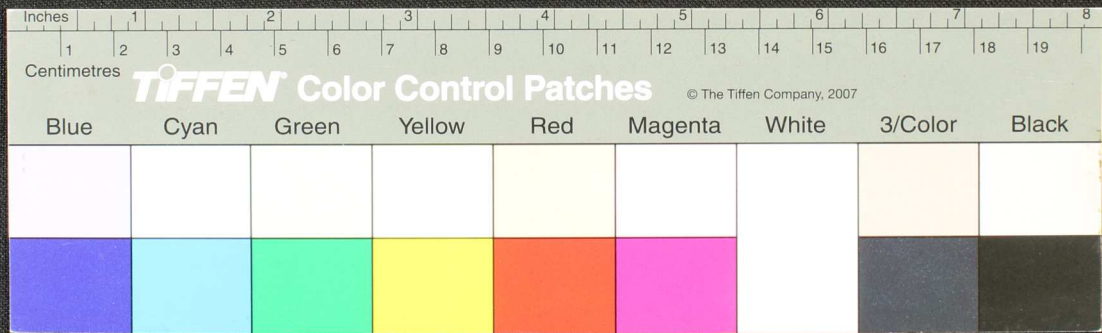
Handwritten Tamil script on a palm leaf manuscript strip. The text is densely packed and runs horizontally across the length of the leaf. The leaf shows signs of age and wear, with some dark spots and fraying at the edges.







Handwritten Tamil script on a palm leaf manuscript. The text is densely packed and runs horizontally across the length of the leaf. The leaf shows signs of age and wear, with some dark spots and a small hole near the center.

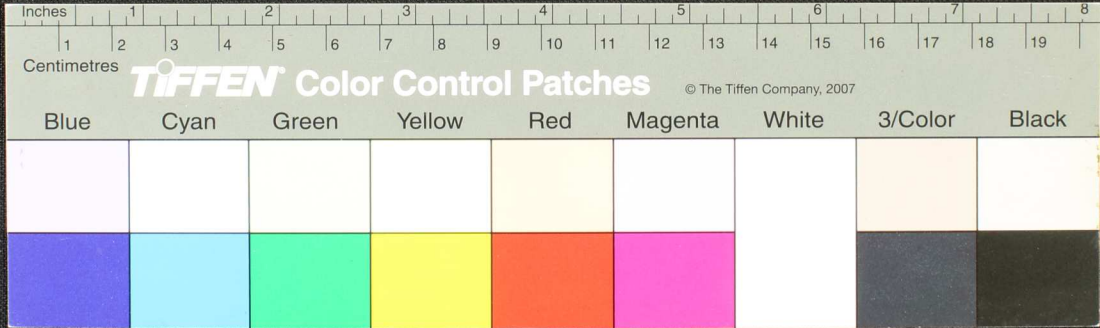






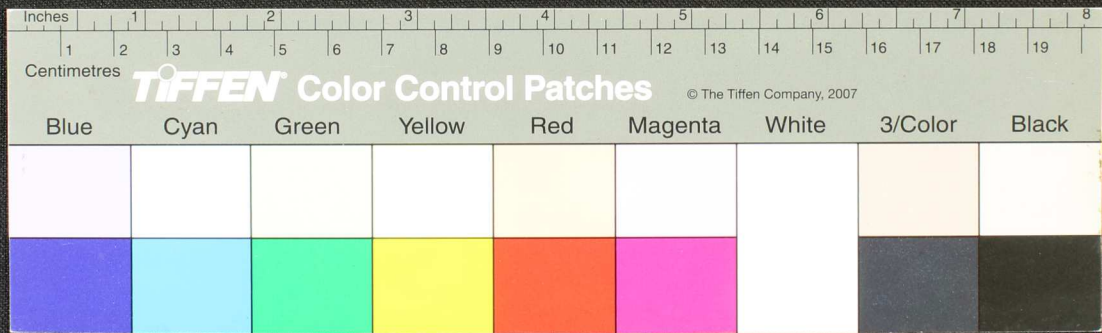


Handwritten Tamil script on a palm leaf manuscript. The text is arranged in approximately 10 horizontal lines across the length of the leaf. The script is densely packed and appears to be a form of classical Tamil. There are some dark spots and signs of wear on the leaf, particularly a prominent one near the center-left.



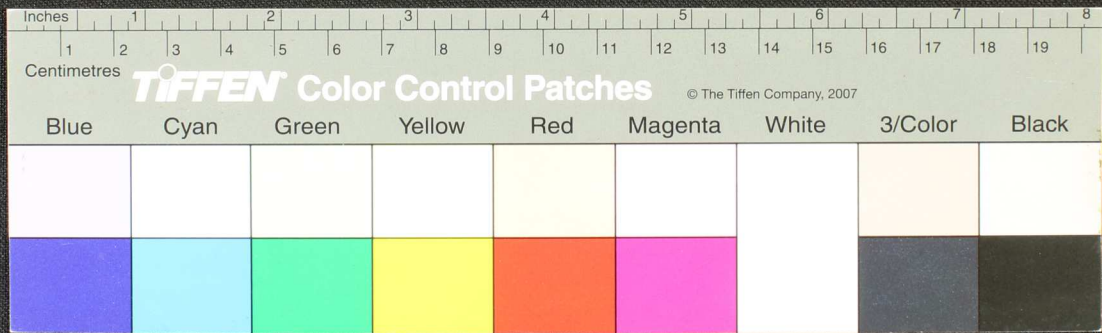


Handwritten Tamil script on a palm leaf manuscript. The text is arranged in approximately 10 horizontal lines across the length of the leaf. The script is finely etched into the surface of the dried leaf. The leaf shows signs of age, including some dark spots and wear at the ends.





Handwritten Tamil script on a palm leaf manuscript. The text is arranged in approximately 10 horizontal lines across the length of the leaf. The script is finely etched into the surface of the dried leaf. The leaf shows signs of age, including some dark spots and a small hole on the left side.







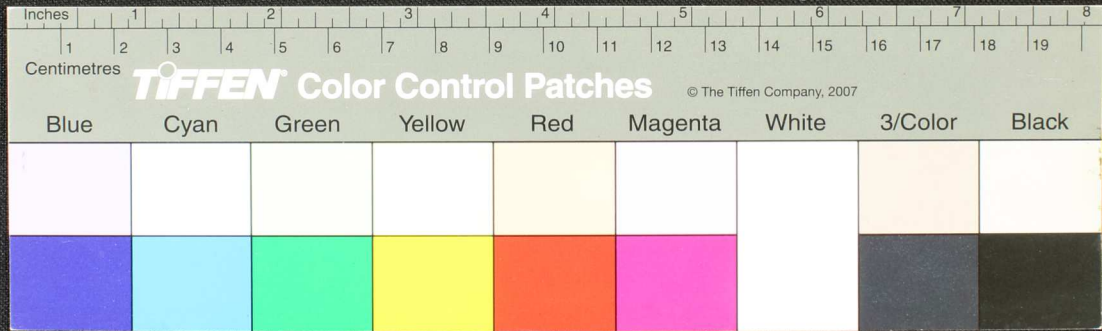








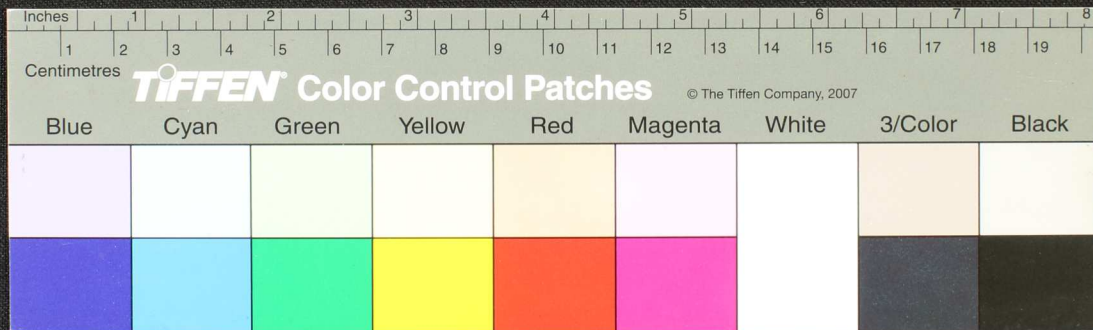
Handwritten Tamil script on a palm leaf manuscript. The text is arranged in approximately 12 horizontal lines across the length of the leaf. The script is finely etched into the surface of the dried leaf. There are several dark, irregular spots and a larger hole on the right side of the leaf, likely due to insect damage or mold. The leaf is yellowish-brown in color.





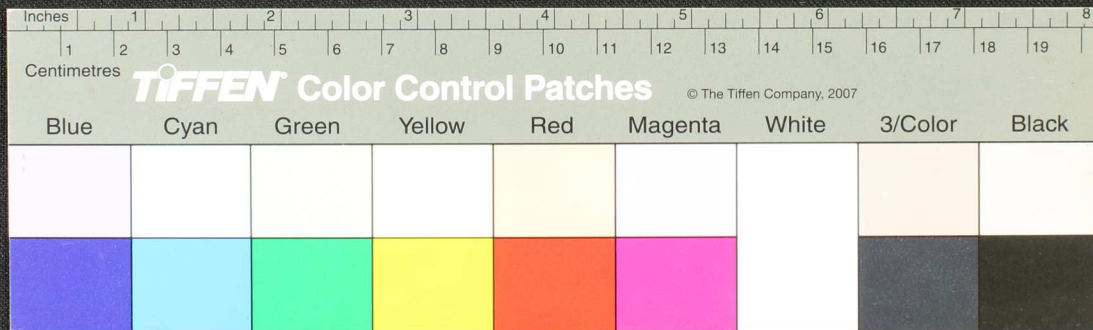


Handwritten Tamil script on a palm leaf manuscript. The text is arranged in approximately 10 horizontal lines across the length of the leaf. The script is densely packed and appears to be a form of classical or historical Tamil. The leaf shows signs of age, including some dark spots and wear at the edges.





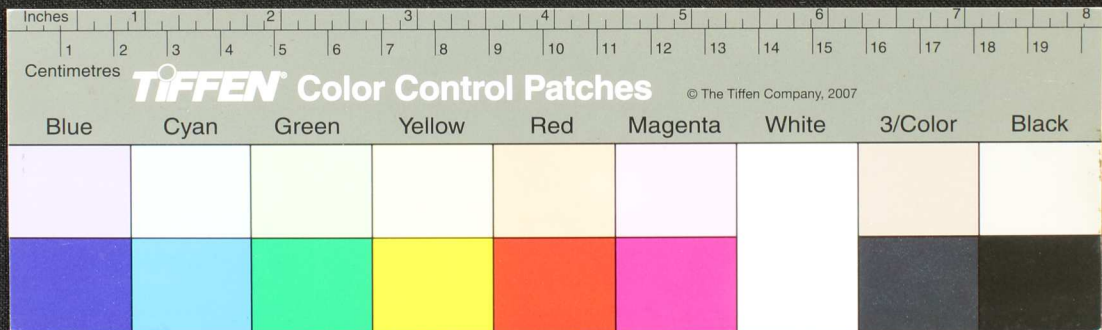
Handwritten Tamil script on a palm leaf manuscript. The text is arranged in approximately four horizontal lines across the length of the leaf. The script is finely etched into the surface of the dried leaf. The right end of the leaf is significantly damaged and frayed.



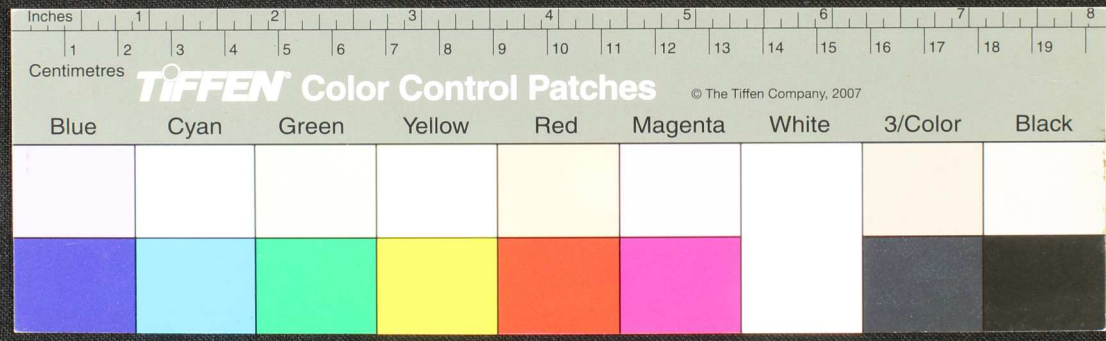




Handwritten Tamil script on a palm leaf manuscript. The text is arranged in approximately 10 horizontal lines across the length of the leaf. The script is finely etched into the surface of the dried leaf. The leaf shows signs of age, including some darkening and wear, particularly at the right end.



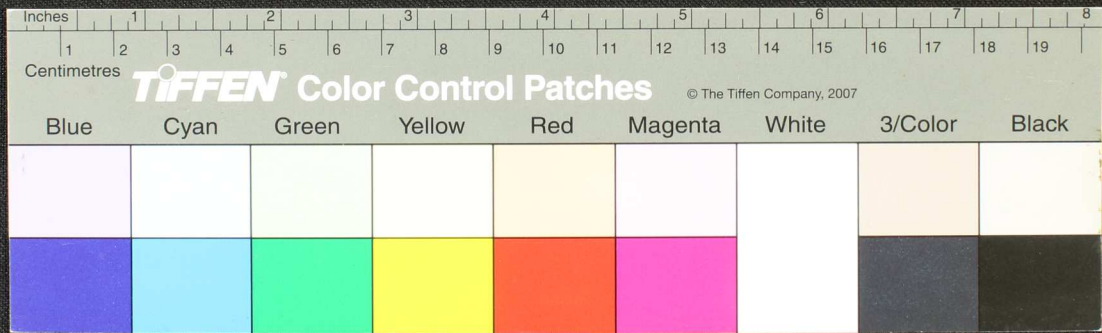
சனகிநதரயநலயதீரனநிசுநுதினநுநுநுபலபைபாசுகராமனாகதாரபசுவரகராமலநதுபசுநதனபசசுதகர  
 சாநுலகமககைகலகதாட்டமபுதுதரயககுனாரசனயரமகநுநாசுலவரகதடுசுயதநரவரமநுநதமநுநு  
 கனவபரமாரரரனனுகுகுசுகுடபபைபாமசுயதுனதயயநதகரகசுரரரரனநுநாநதாதுமனநர்  
 சாநுலகமககைகலகதாட்டமபுதுதரயககுனாரசனயரமகநுநாசுலவரகதடுசுயதநரவரமநுநதமநுநு  
 கனவபரமாரரரனனுகுகுசுகுடபபைபாமசுயதுனதயயநதகரகசுரரரரனநுநாநதாதுமனநர்



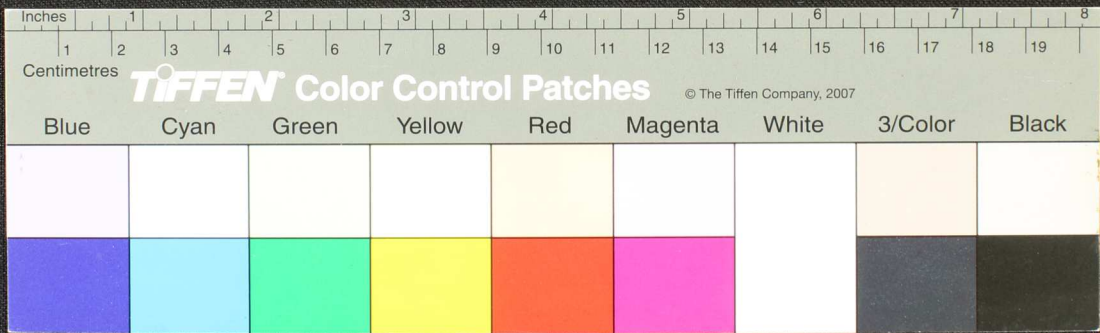




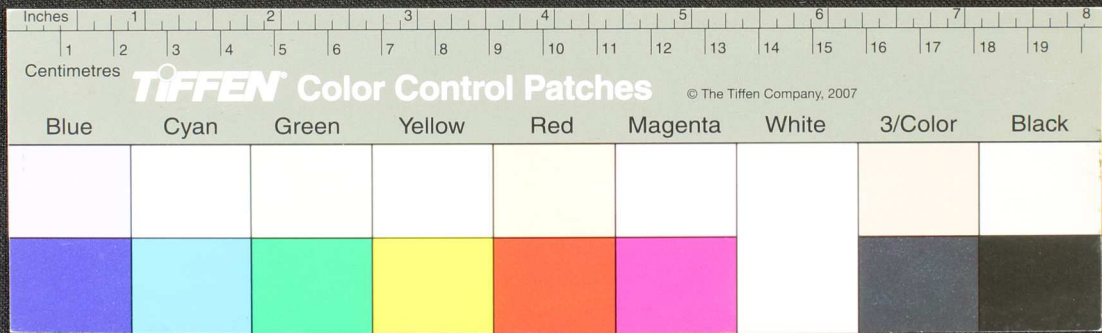
Handwritten Tamil script on a palm leaf manuscript. The text is densely packed and spans the length of the leaf. It appears to be a historical record or a religious text, given the context of such artifacts. The script is written in a traditional style, with some characters that are characteristic of older Tamil inscriptions. The leaf shows signs of age, with some discoloration and wear, particularly at the ends.



Handwritten Tamil script on a palm leaf manuscript. The text is densely packed and runs horizontally across the length of the leaf. It appears to be a historical record or a religious text, given the context of such artifacts. The script is finely etched into the surface of the dried leaf.

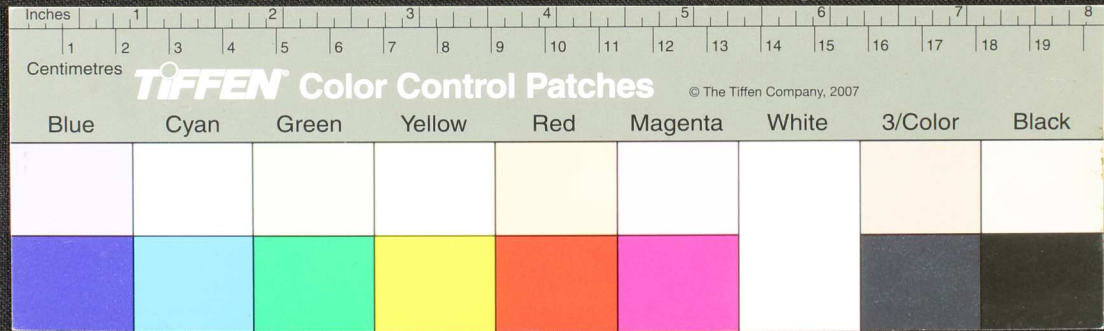


Handwritten Tamil script on a palm leaf manuscript. The text is arranged in approximately 10 horizontal lines across the length of the leaf. The script is finely etched into the natural texture of the dried leaf. There are some dark spots and irregularities on the leaf, possibly due to age or environmental factors.





Handwritten Tamil script on a palm leaf manuscript. The text is arranged in approximately 10 horizontal lines across the length of the leaf. The script is finely etched into the surface of the dried leaf. The leaf shows signs of age and wear, with some fraying and discoloration at the ends.



















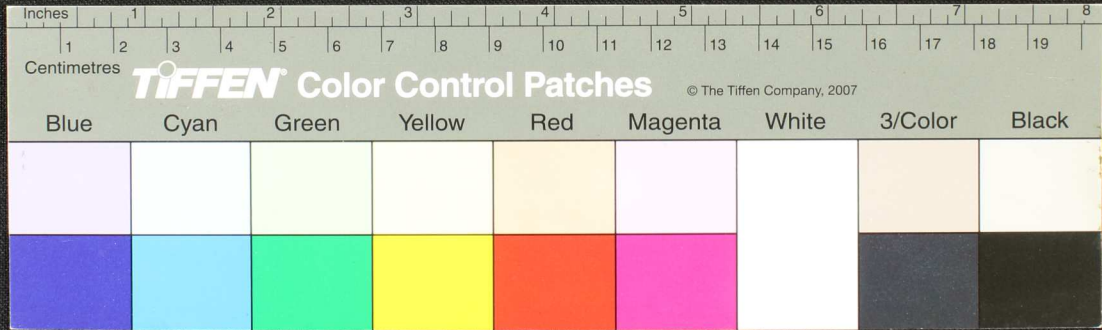




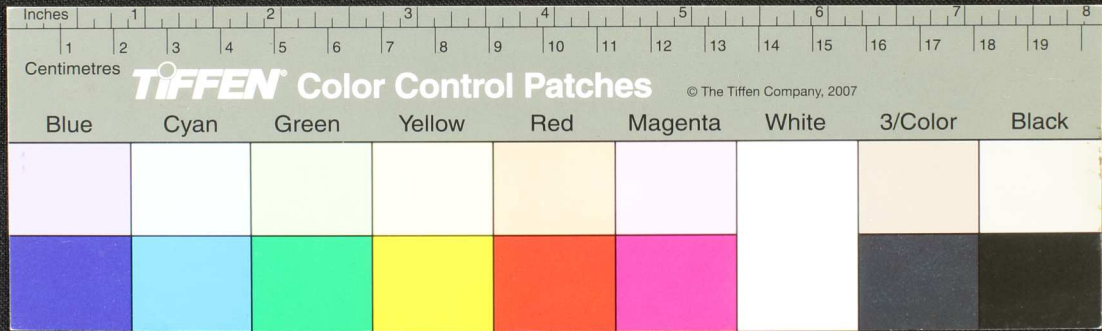




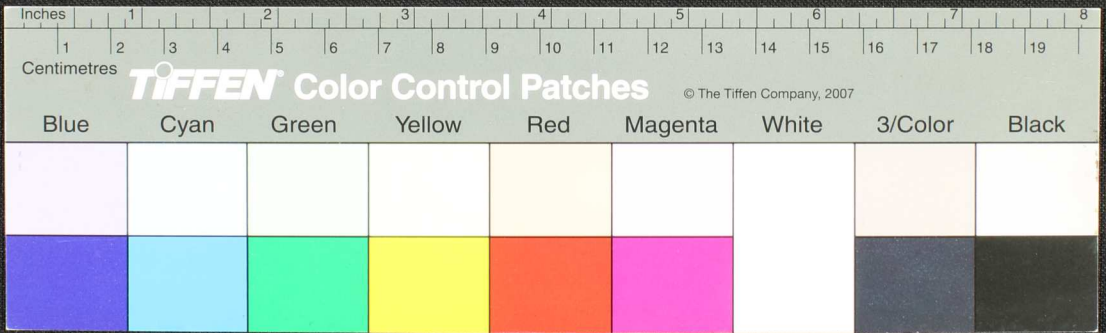
Handwritten Tamil script on a palm leaf manuscript. The text is densely packed and spans the length of the leaf. It appears to be a historical record or a religious text, given the context of such artifacts. The script is written in a traditional style, with some characters that are characteristic of older Tamil inscriptions. The leaf shows signs of age, including some darkening and wear, particularly on the right side.



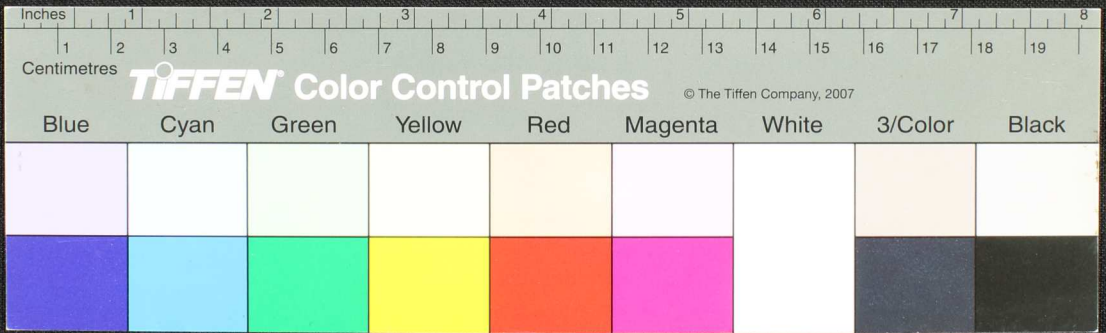
Handwritten Tamil script on a palm leaf manuscript. The text is densely packed and spans the entire length of the leaf. It appears to be a historical record or a religious text, given the nature of the medium. The script is written in a traditional style, with some characters that are characteristic of older Tamil forms. The leaf shows signs of age, including some darkening and wear, particularly at the ends.



Handwritten Tamil script on a palm leaf manuscript. The text is densely packed and runs horizontally across the length of the leaf. The script is in an older form of the Tamil language. On the left side, there are some marginal notes or a small header, including the characters 'மொந்', 'இரண்', and 'உரை-'. The leaf shows signs of age and wear, with some dark spots and irregular edges.



Handwritten Tamil script on a palm leaf manuscript. The text is arranged in approximately 10 horizontal lines across the length of the leaf. The script is finely etched into the surface of the dried leaf. The leaf shows signs of age, including some dark spots and irregular edges.





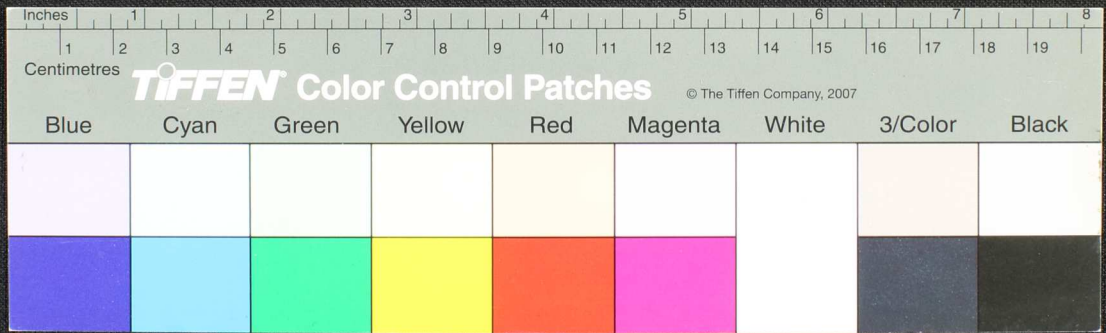
Handwritten Tamil script on a palm leaf manuscript. The text is densely packed and runs horizontally across the length of the leaf. There are several dark, irregular marks and holes, likely from insect damage or wear, scattered across the surface of the leaf.



Handwritten Tamil script on a palm leaf manuscript. The text is densely packed and runs horizontally across the length of the leaf. The script is in an older form of the Tamil language, with some characters appearing to be in a different script or dialect. The leaf shows signs of age, including some dark spots and wear.

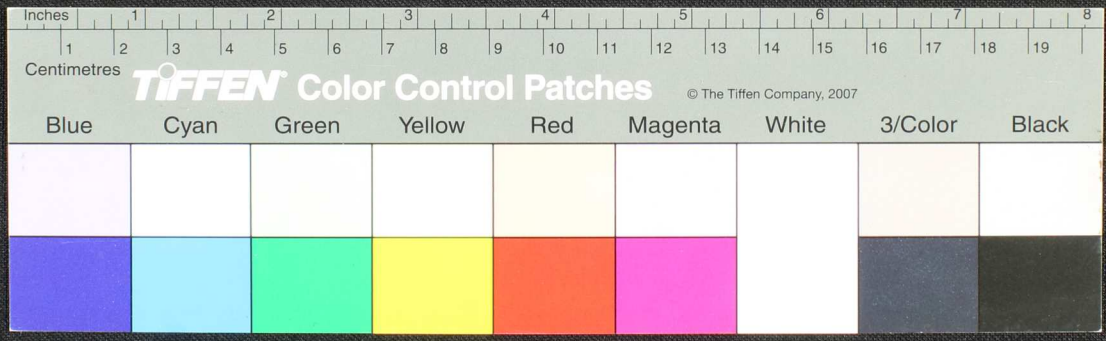


Handwritten Tamil script on a palm leaf manuscript. The text is densely packed and appears to be a historical record or a religious text, possibly related to the Tamil Saiva tradition. The script is written in a traditional style with some decorative elements. The leaf shows signs of age and wear, with some dark spots and a small hole near the center.

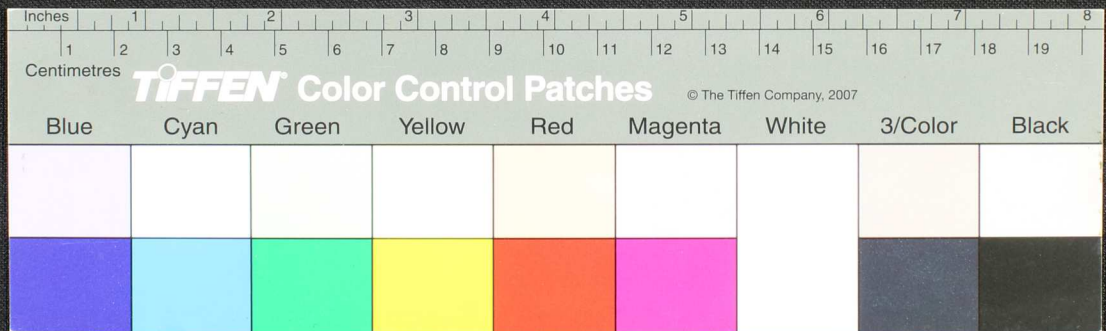




Handwritten Tamil script on a palm leaf manuscript. The text is arranged in approximately 10 horizontal lines across the length of the leaf. The script is finely etched into the surface of the dried leaf. There are several dark, irregular ink-like stains or markings scattered across the leaf, particularly in the middle and right-hand sections, which partially obscure the underlying text.



Handwritten Tamil script on a palm leaf manuscript. The text is arranged in approximately 10 horizontal lines across the length of the leaf. The script is densely packed and appears to be a form of classical Tamil. There are several dark, irregular spots and smudges, particularly on the right side, which may be due to age or damage to the leaf. The leaf itself is yellowish-brown and has a slightly curved shape.











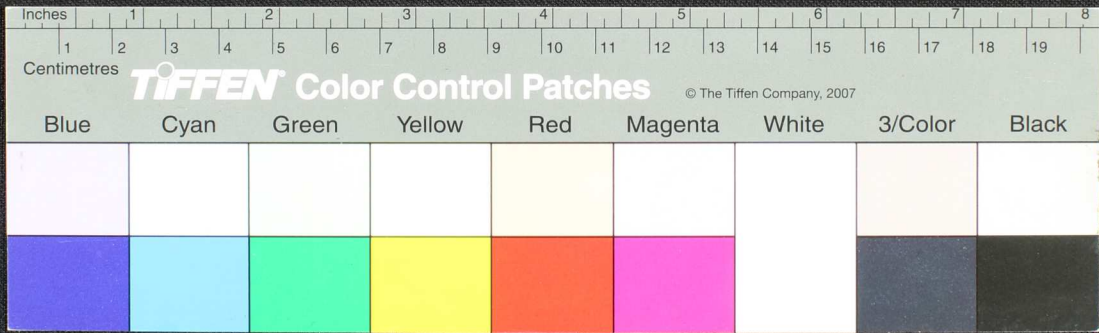








Handwritten text in Tamil script on a palm leaf manuscript. The text is densely packed and spans the length of the leaf. The script is a traditional form of the Tamil language, likely used for religious or philosophical purposes. The leaf shows signs of age and wear, with some darkening and irregular edges.

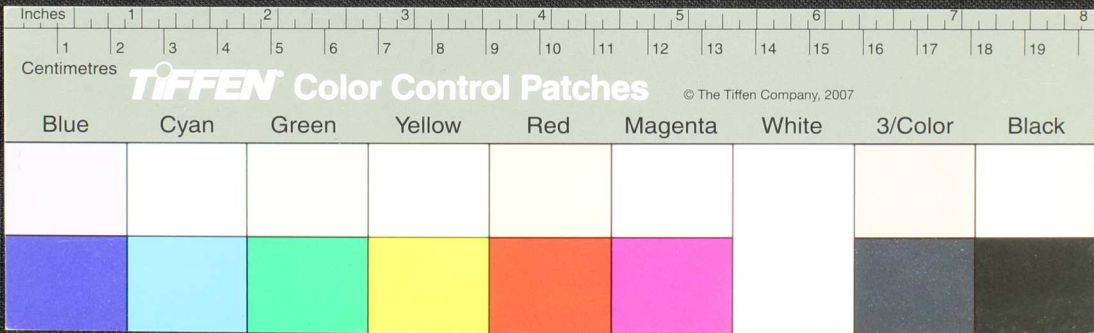








Handwritten Tamil script on a palm leaf manuscript. The text is arranged in approximately 10 horizontal lines across the length of the leaf. The script is finely etched into the surface of the dried leaf. The right end of the leaf is significantly damaged and frayed.

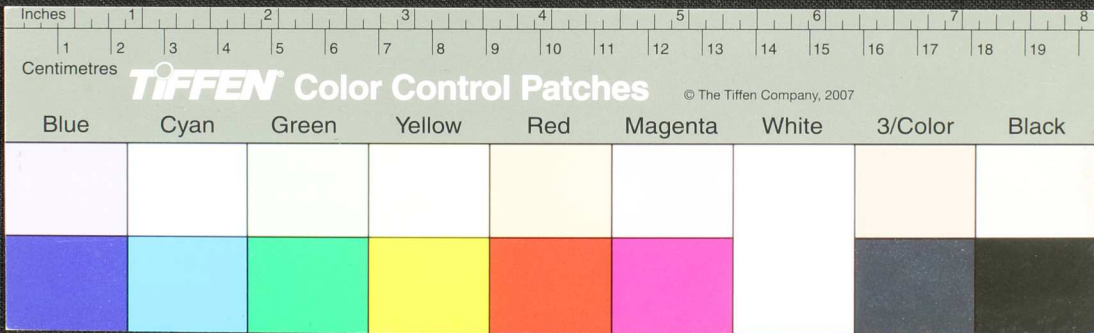






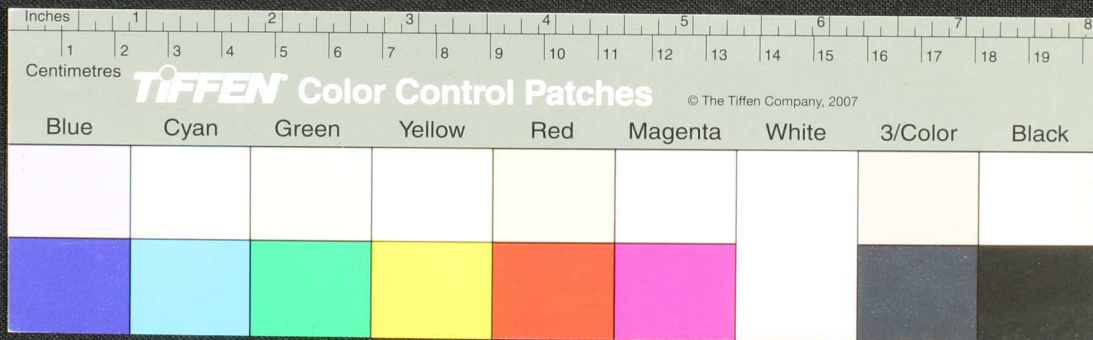


Handwritten Tamil script on a palm leaf manuscript. The text is densely packed and runs horizontally across the length of the leaf. A circular hole is visible on the left side, used for binding multiple leaves together.

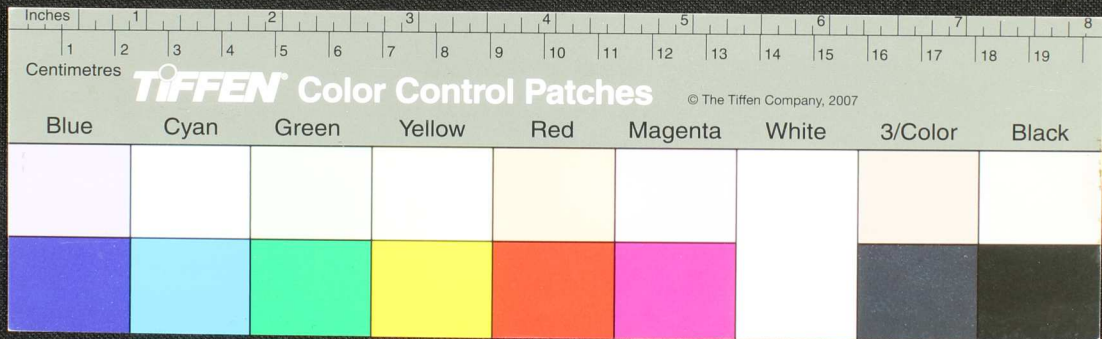




Handwritten text in Tamil script on a palm leaf manuscript. The text is densely packed and runs horizontally across the length of the leaf. The leaf shows signs of age and wear, with some fraying at the edges.

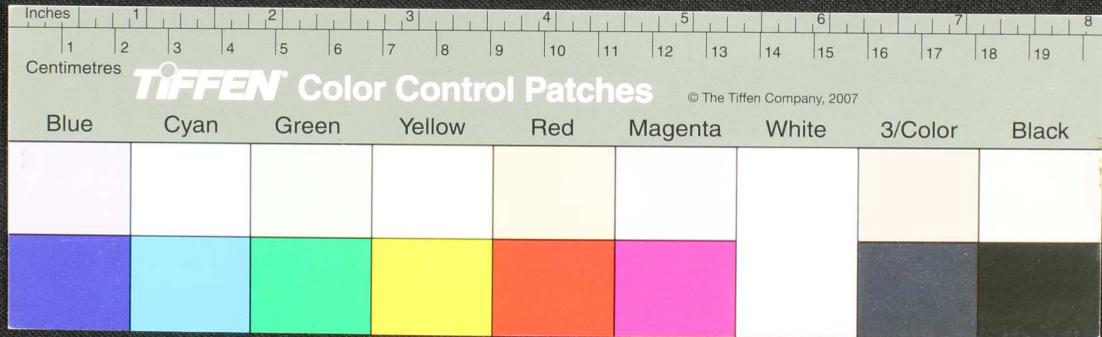


Handwritten Tamil script on a palm leaf fragment. The text is densely packed and appears to be a historical record or a form of correspondence. The leaf is yellowed and shows signs of age and wear.

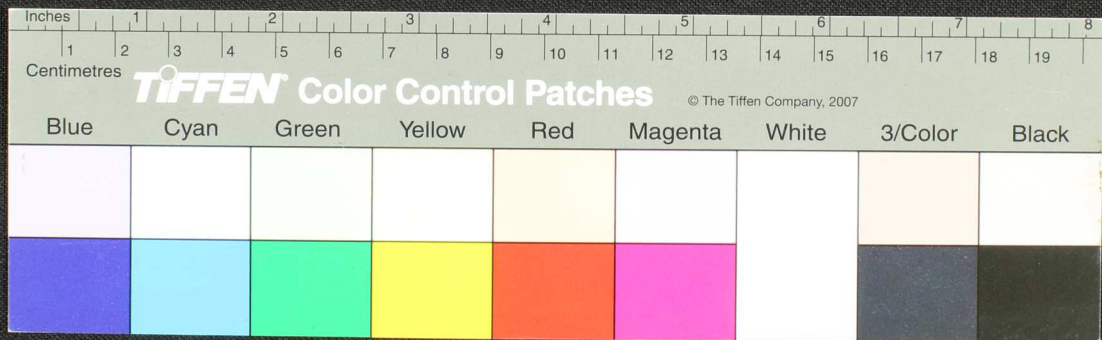




Handwritten Tamil script on a palm leaf manuscript. The text is densely packed and spans the length of the leaf, which is approximately 8 inches long. The script is written in a traditional style, with some characters appearing to be in a different dialect or historical form of Tamil. The leaf shows signs of age and wear, particularly at the right end where it is torn and frayed.



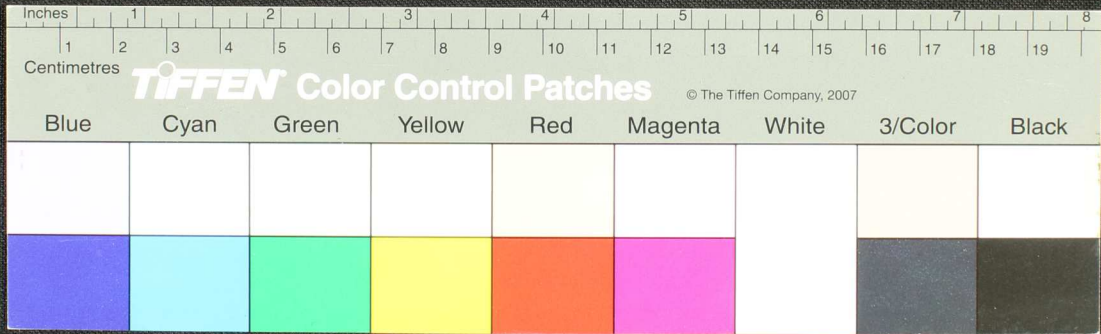
Handwritten Tamil script on a palm leaf manuscript. The text is arranged in approximately 10 horizontal lines across the length of the leaf. The script is densely packed and appears to be a form of classical Tamil, possibly including religious or philosophical content. The leaf shows signs of age and wear, with some fraying at the edges.



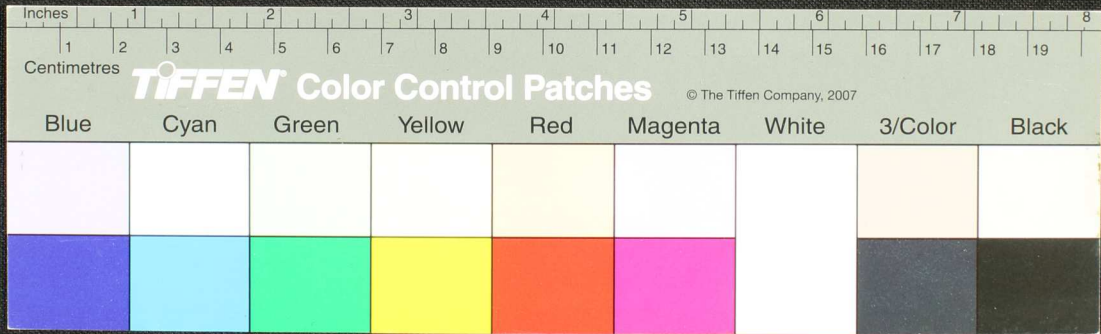




Handwritten Tamil script on a palm leaf manuscript. The text is densely packed and runs horizontally across the length of the leaf. The leaf shows signs of age, including some dark spots and wear at the ends.



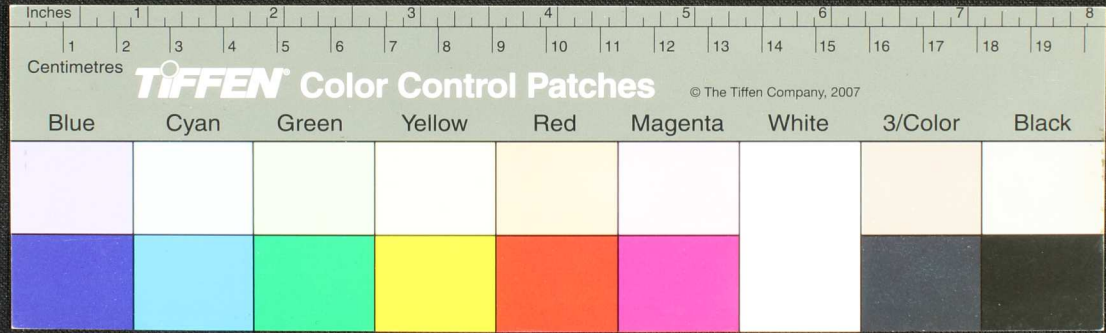
Handwritten Tamil script on a palm leaf manuscript. The text is arranged in approximately 10 horizontal lines across the length of the leaf. The script is densely packed and appears to be a form of classical Tamil, possibly including religious or philosophical content. The leaf shows signs of age, with some discoloration and wear at the edges.





உளநீர்த் துப  
 மரலிசுநீடு  
 த்தயலம -  
 னமததுக்கு  
 னுலண்கு  
 மய

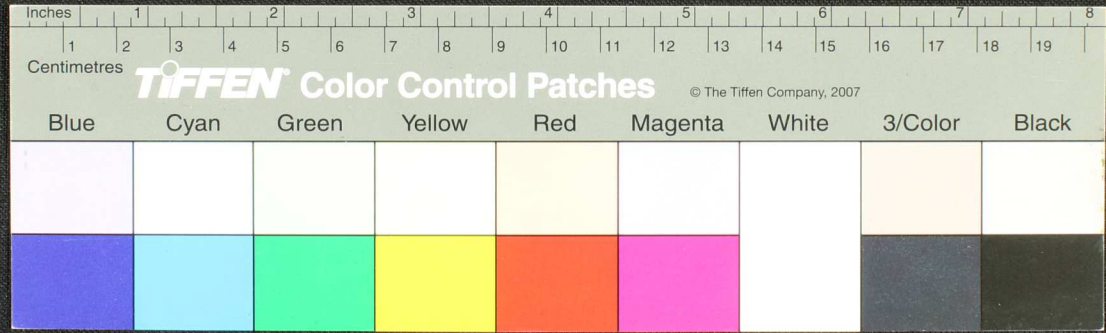
பாலையவளரதழ நடுமமாநீதனதுவகீநீதரசசாவி நுநீசுநா'வகீநீபநீடு...  
 டுப'வடுமளலுமலிசதமயலிடுநுதுப'வடுமடுததிக்குடடதூதநா'நக'...  
 நுலகாடுநீடுயும...  
 தாமகநுதகமநு...  
 வஉள-மதுநீநீநீததயலிசாநீததநாலலநுப'வடு...  
 சமஉடடுததுப'வடு...  
 மா'வடு...



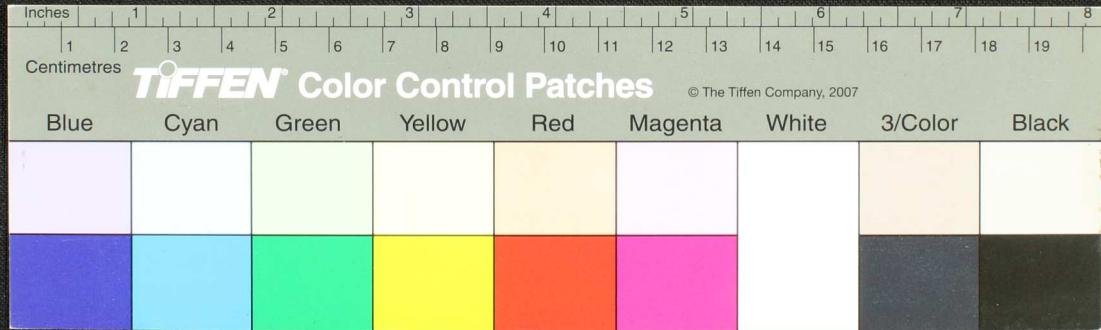


நிரைபுரத்தி  
 எழு-மொரான  
 கி.வ.வ. 1099

பாவகமயாதி... மரமயமமிவதி... ஆவது... குகை... மய...



Handwritten Tamil script on a palm leaf manuscript. The text is densely packed and spans the entire length of the leaf. It appears to be a historical record or a religious text, given the context of such artifacts. The script is written in a traditional style, with some characters that are characteristic of older Tamil inscriptions. The leaf shows signs of age, including some discoloration and wear at the ends.





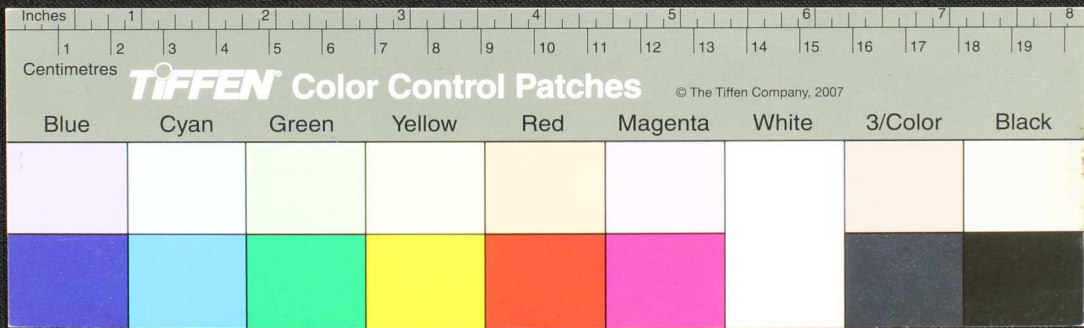








Handwritten Tamil script on a palm leaf manuscript. The text is arranged in approximately 10 horizontal lines across the length of the leaf. The script is finely etched into the surface of the dried leaf. The leaf shows signs of age, including some dark spots and irregular edges.

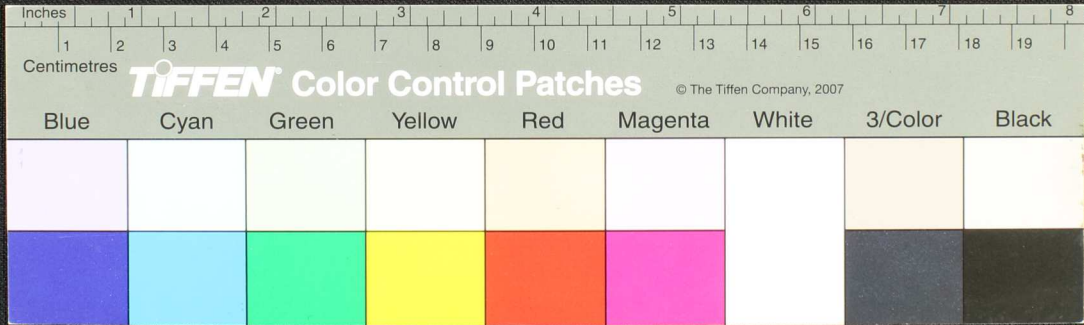






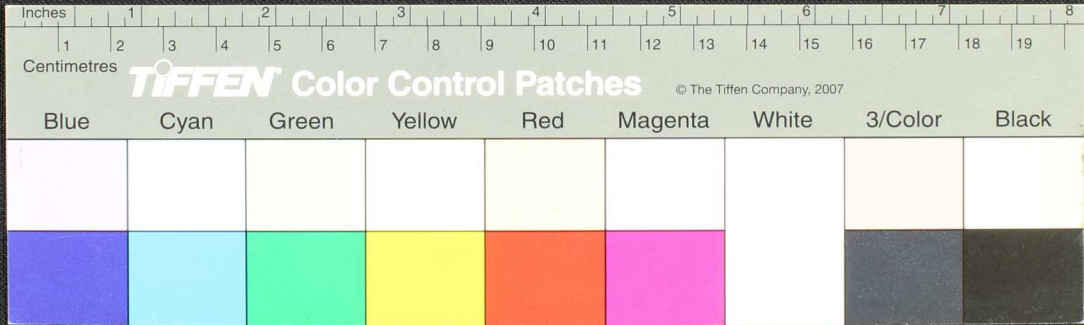


Handwritten Tamil script on a palm leaf manuscript. The text is densely packed and runs horizontally across the length of the leaf. The script is in an older form of the Tamil language, with some characters appearing to be in a different script or dialect. The leaf shows signs of age and wear, with some dark spots and discoloration.





Handwritten Tamil script on a palm leaf manuscript. The text is arranged in approximately 10 horizontal lines across the length of the leaf. The script is finely etched into the surface of the dried leaf. The leaf shows signs of age, including some dark spots and wear, particularly on the right side.





Handwritten Tamil script on a palm leaf manuscript. The text is densely packed and runs horizontally across the length of the leaf. The leaf shows signs of age and wear, with some dark spots and irregular edges.

