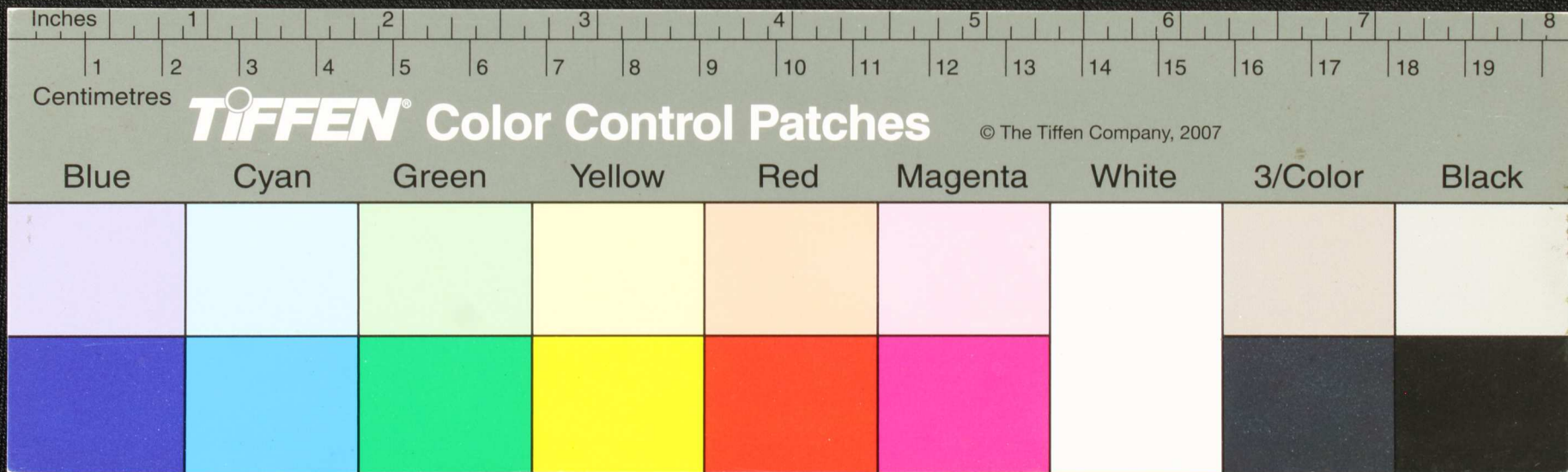
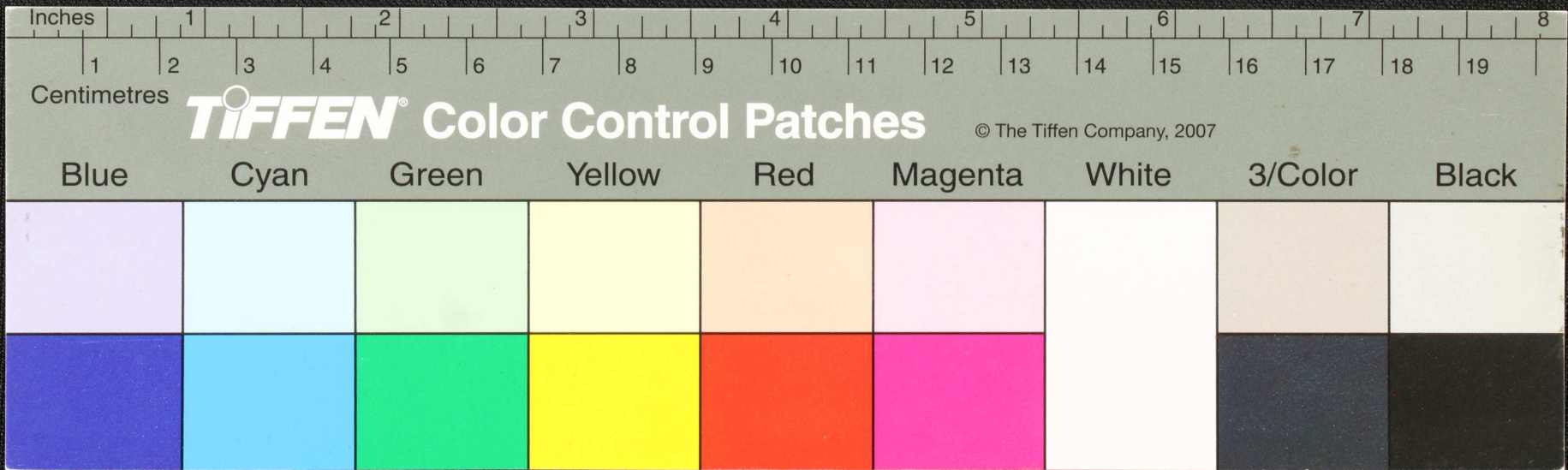


Handwritten text in Tamil script on a palm leaf manuscript. The text is arranged in approximately 10 horizontal lines across the length of the leaf. The script is dense and appears to be a form of classical or historical Tamil. There are several large, dark, irregular holes or damage marks scattered across the leaf, particularly in the upper and middle sections, which obscure some of the text.



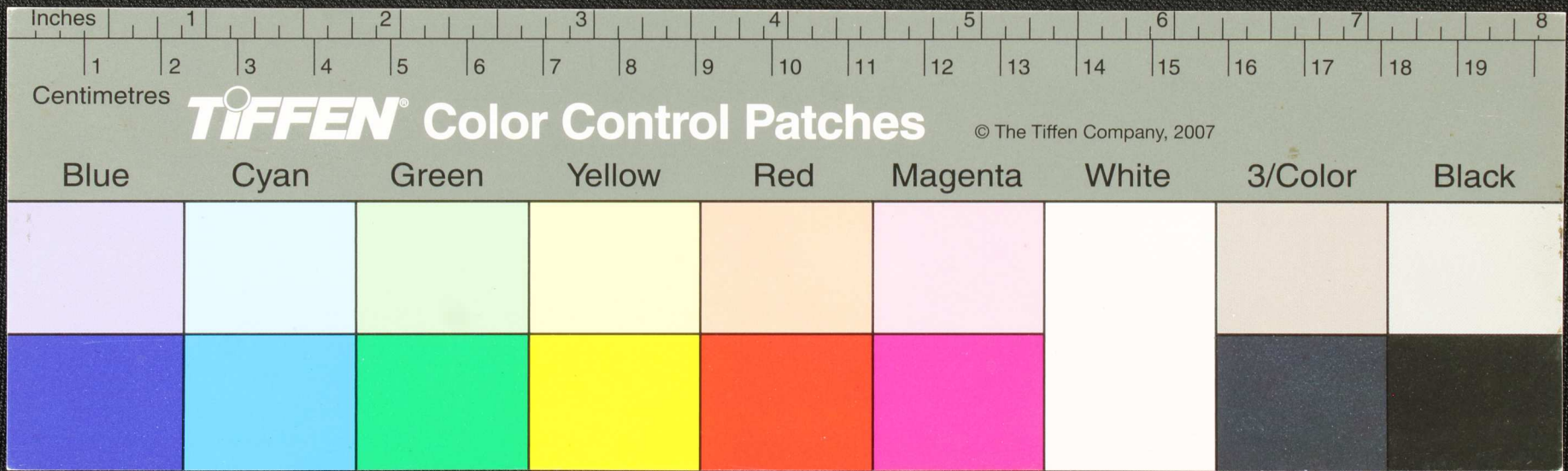


Handwritten text in Tamil script on a palm leaf manuscript. The text is arranged in approximately 12 horizontal lines across the length of the leaf. The script is densely packed and appears to be a form of classical or historical Tamil. There are several large, dark, irregular holes or damage marks scattered across the leaf, particularly in the middle and right sections, which obscure some of the characters. The leaf itself is a light tan or yellowish-brown color, showing signs of age and wear.



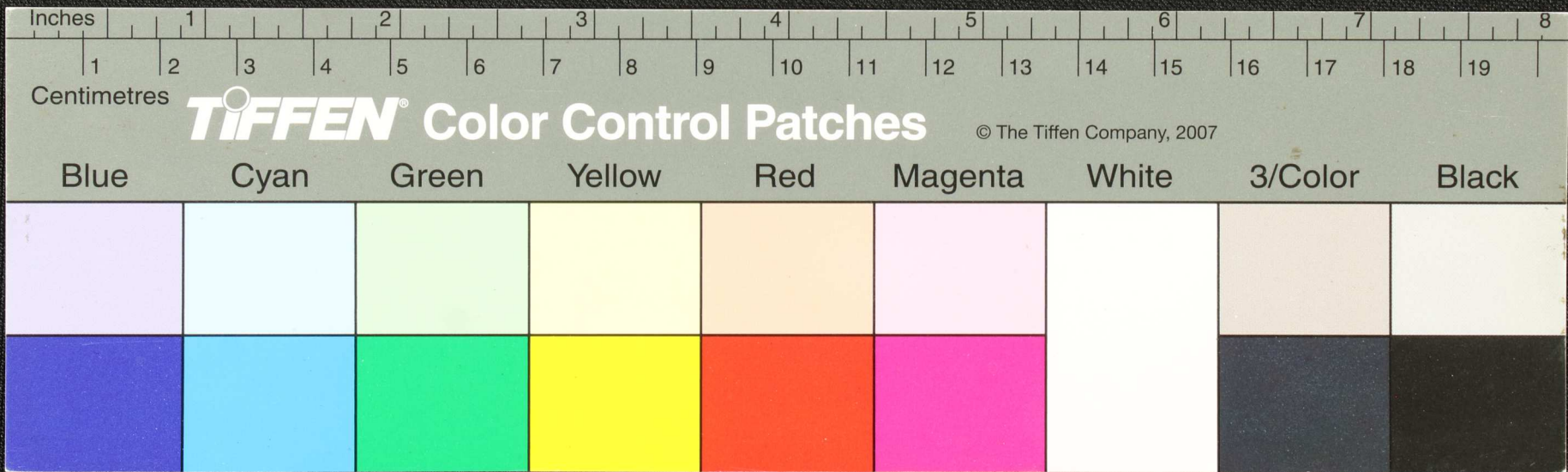


Handwritten text in Tamil script on a palm leaf manuscript. The text is arranged in approximately 10 horizontal lines. The script is finely etched into the surface of the dried leaf. The leaf shows signs of age, including some dark spots and irregular edges.



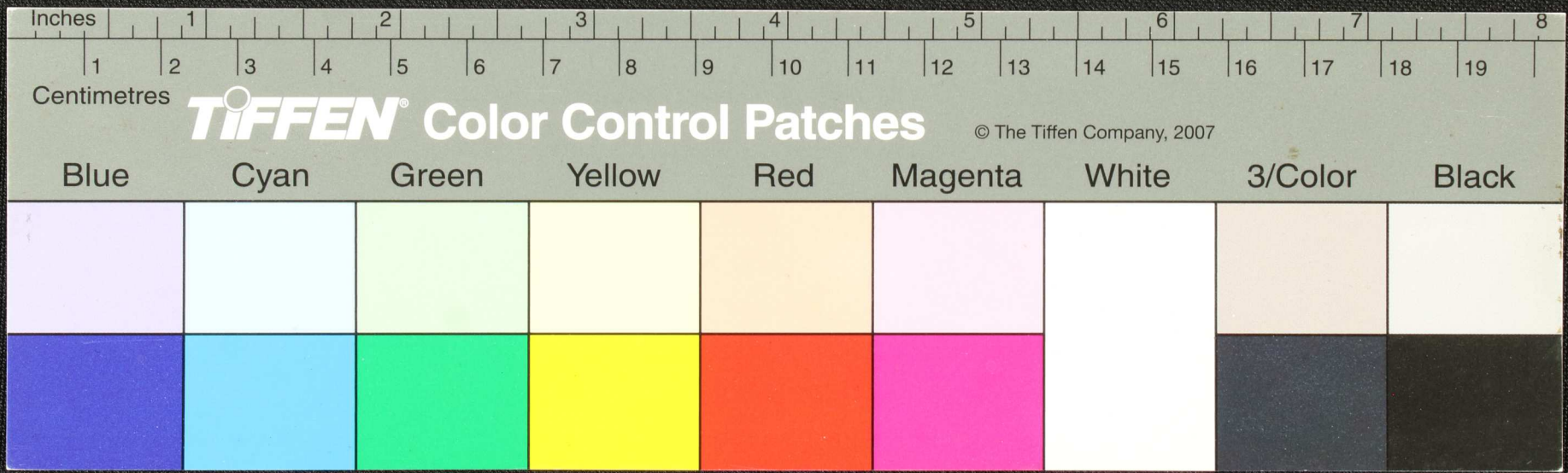


Handwritten text in Tamil script on a palm leaf manuscript. The text is arranged in approximately 10 horizontal lines across the length of the leaf. The script is finely etched into the surface of the dried leaf. The leaf shows signs of age, including a prominent circular hole near the center and irregular dark spots and fraying at the edges.

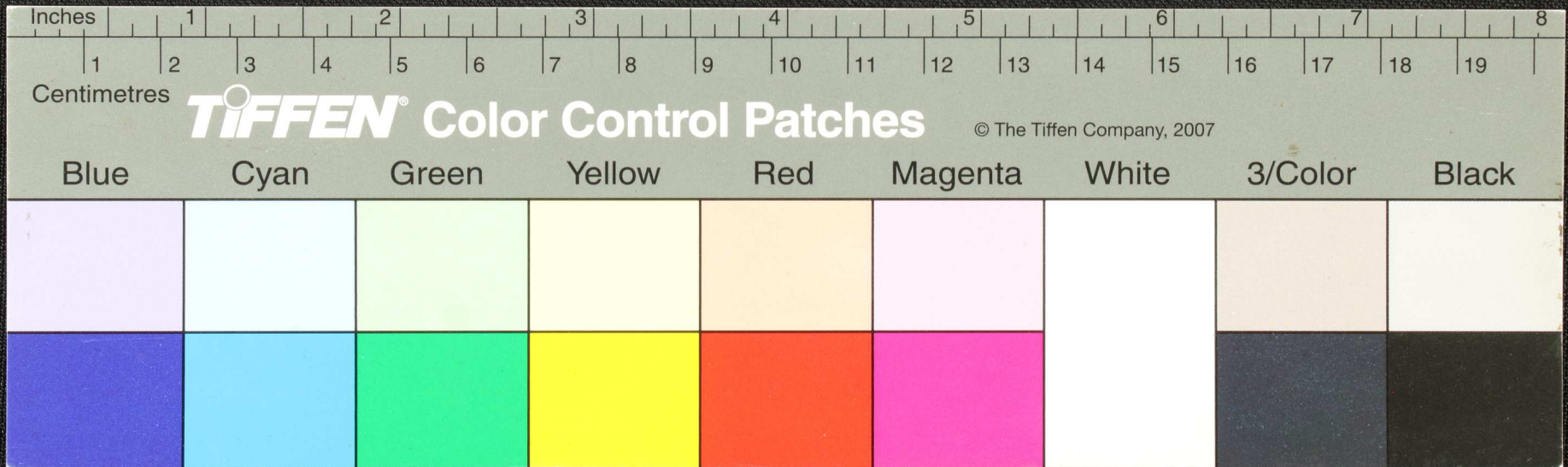




Handwritten text in an ancient script, possibly Tamil, on a fragment of aged, yellowed paper. The text is arranged in several lines and is partially obscured by a circular hole and irregular tears. The script is dark and appears to be a form of classical South Asian writing.

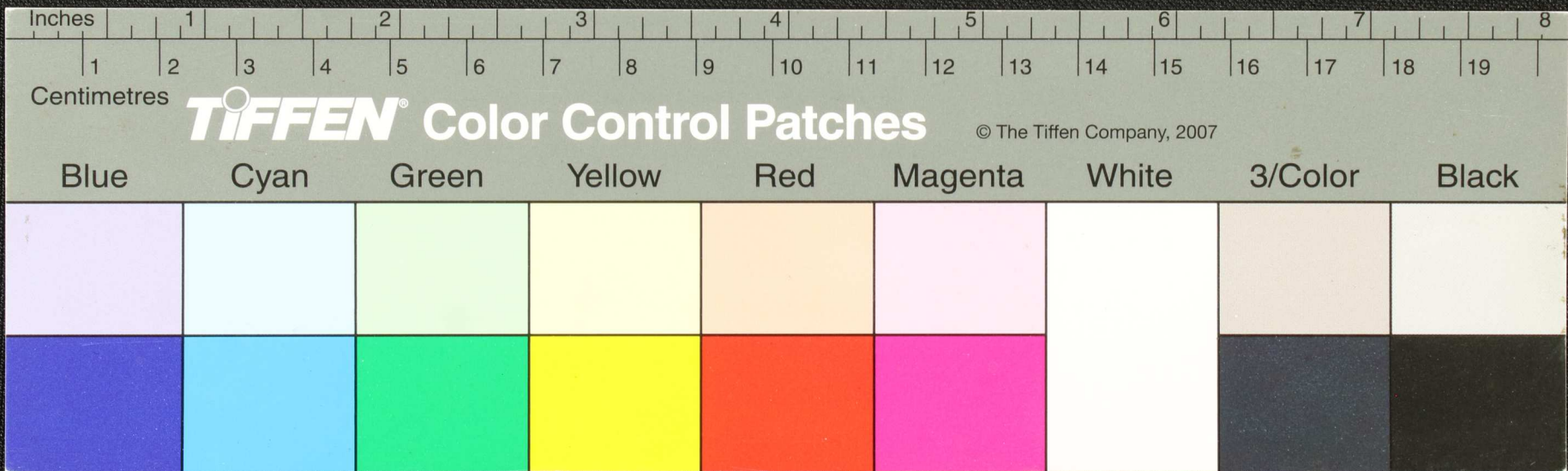






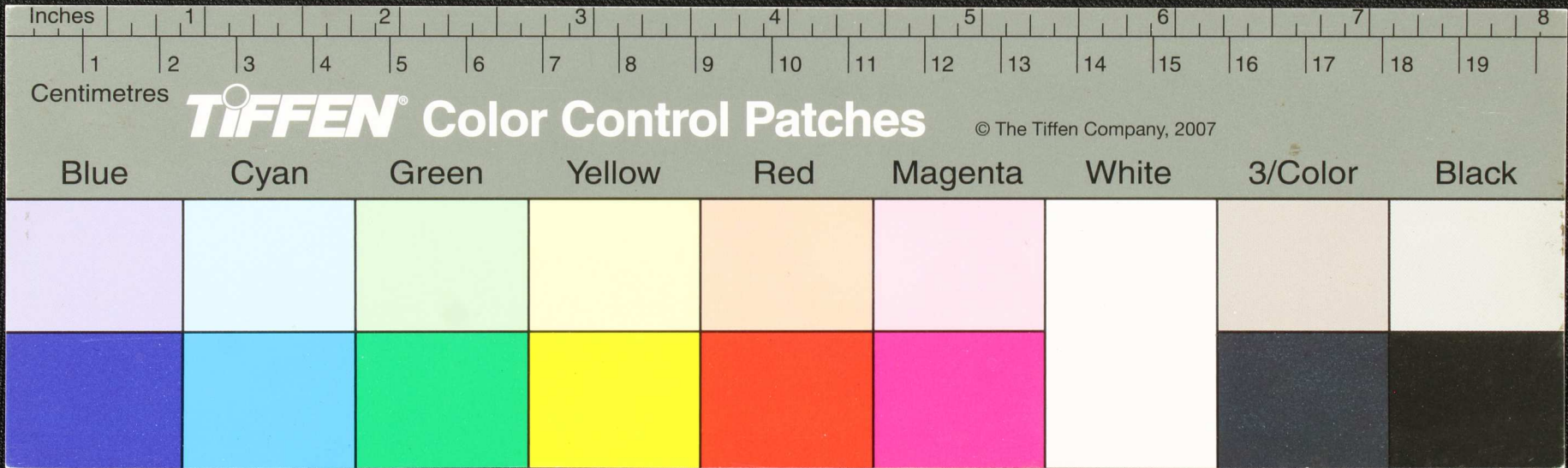


Handwritten text in Tamil script on a palm leaf manuscript. The text is arranged in approximately 10 horizontal lines across the length of the leaf. The script is finely etched into the surface of the dried leaf. There are two circular holes visible, which were traditionally used for threading a cord to bind multiple leaves together into a book format. The leaf shows signs of age, including some dark spots and irregular edges.





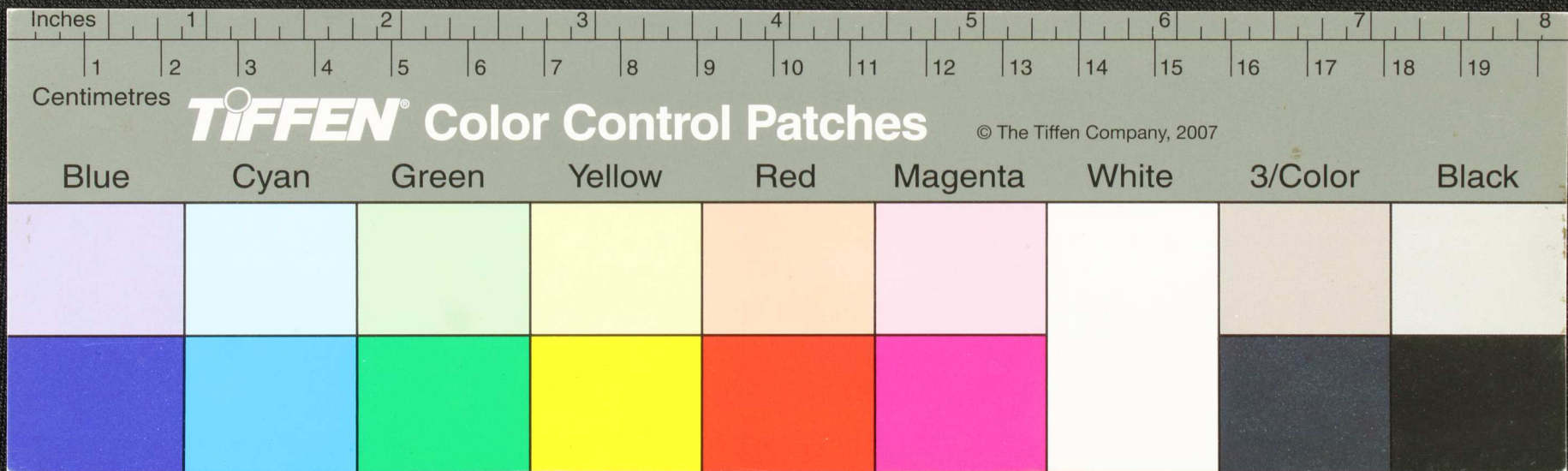
Handwritten text in Tamil script on a palm leaf manuscript. The text is arranged in approximately 10 horizontal lines across the length of the leaf. The script is finely etched into the surface of the dried leaf. There are two circular holes visible, which were traditionally used for threading a cord to bind multiple leaves together into a book format. The leaf shows signs of age, including some dark spots and irregular edges.





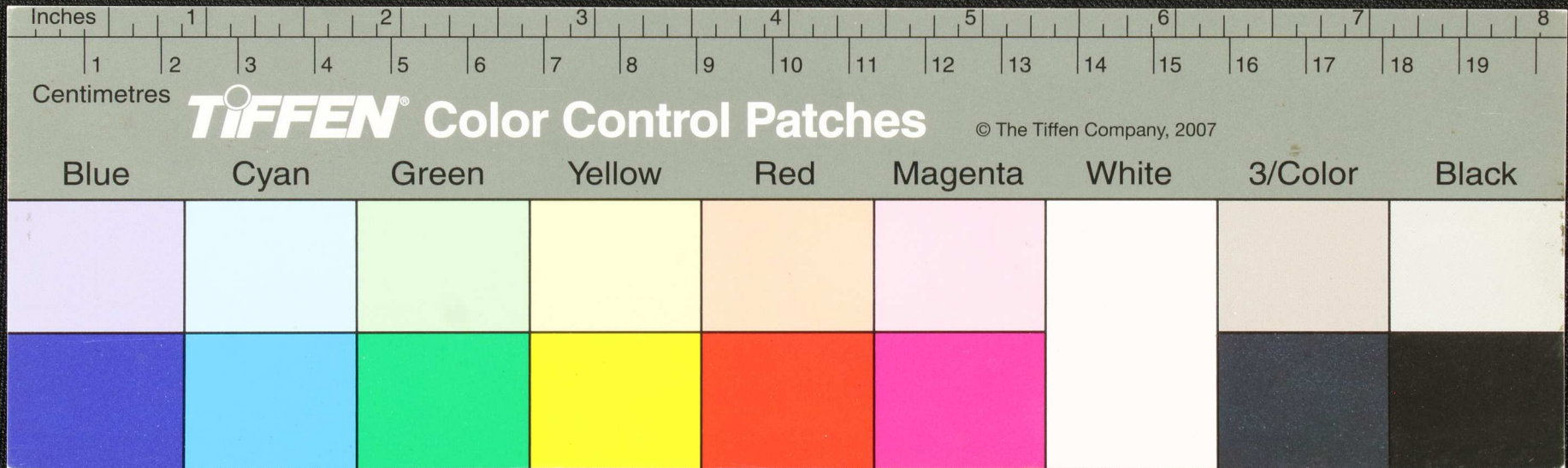






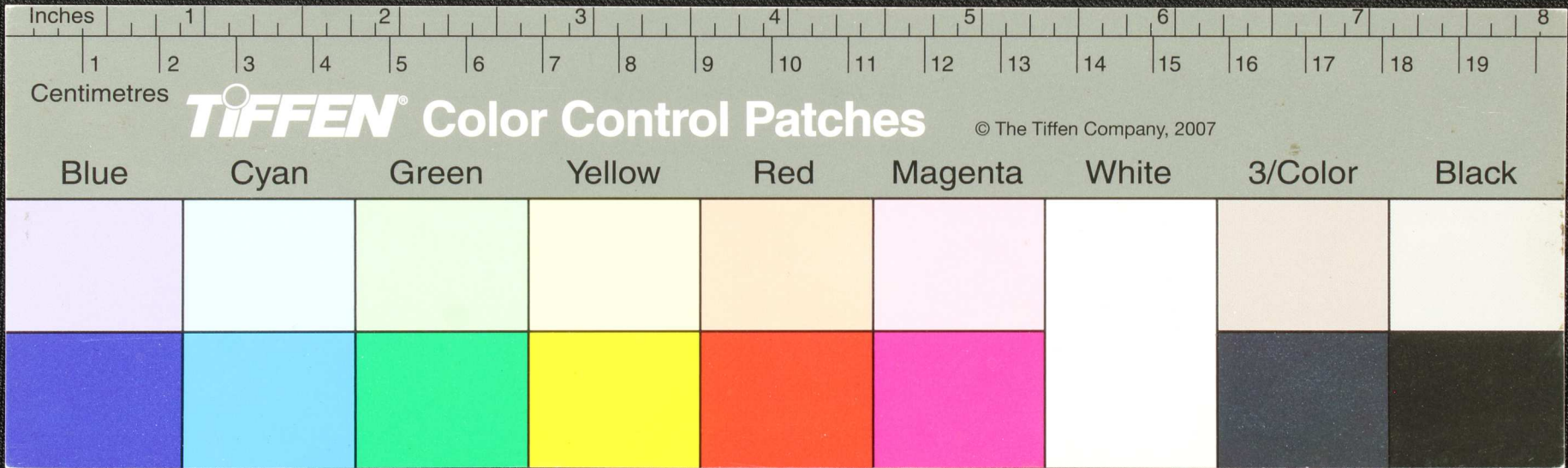


Handwritten text in an ancient script, likely Tamil, on a palm leaf manuscript. The text is densely packed and runs horizontally across the length of the leaf. The script is dark and appears to be etched or inscribed into the surface of the dried leaf. The leaf shows signs of age, including some dark spots and irregularities in the surface.



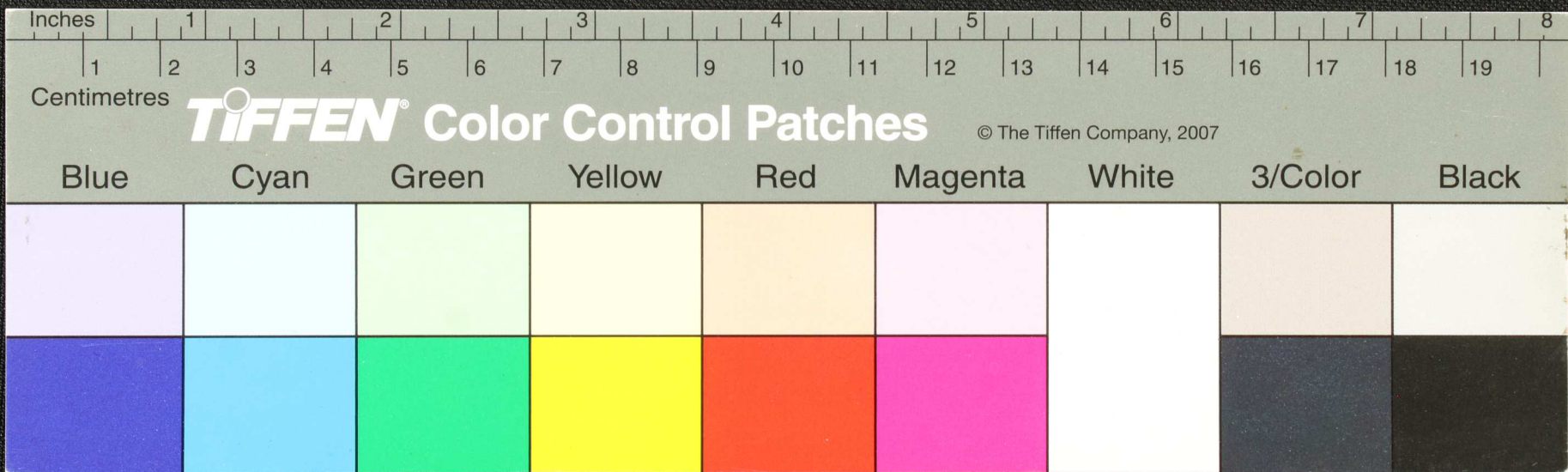


Handwritten text in Tamil script on a palm leaf manuscript. The text is arranged in approximately 10 horizontal lines across the length of the leaf. The script is densely packed and includes various characters, including some that appear to be numerals or specific symbols. The leaf shows signs of age, with dark spots and some damage, particularly around the edges and in the middle section.



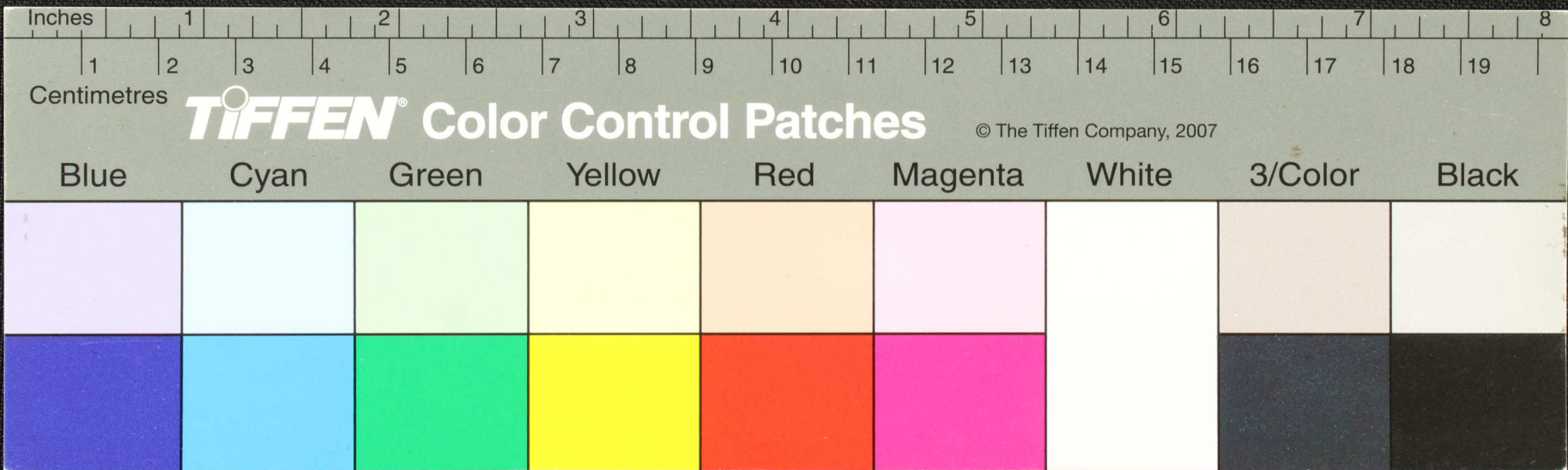


Handwritten text in an ancient script, possibly Tamil, on a palm leaf manuscript. The text is arranged in approximately 10 horizontal lines across the length of the leaf. The script is finely etched into the surface of the dried leaf. There are several dark, irregular spots and a large, roughly rectangular hole on the right side of the leaf, which appear to be damage or intentional markings. The leaf is oriented horizontally and shows signs of age and wear.



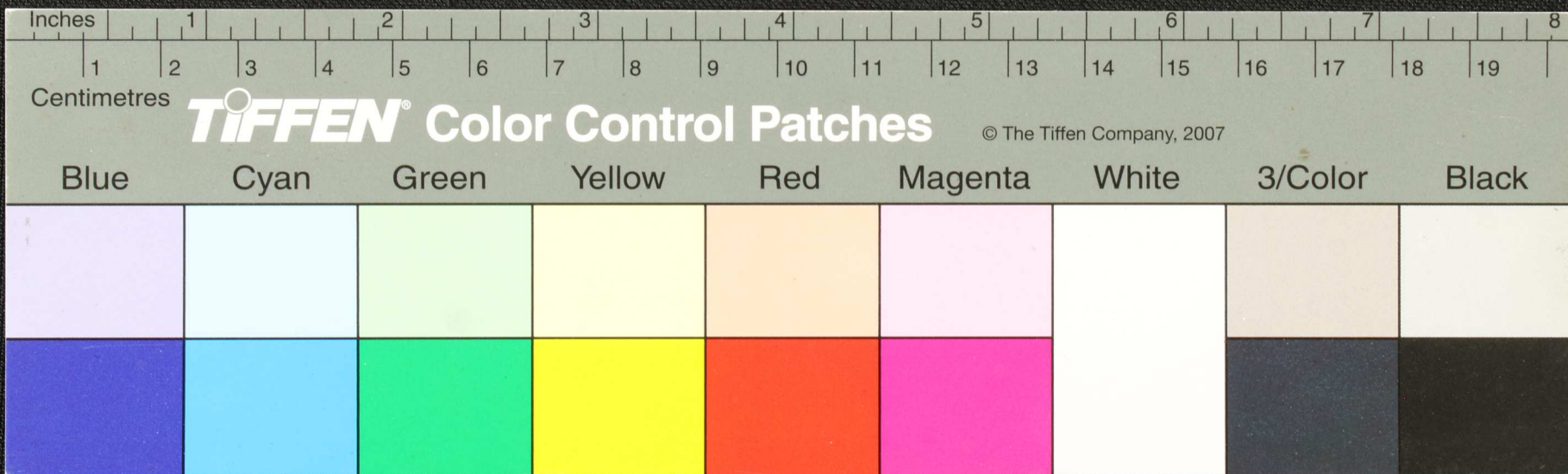


Handwritten text in an ancient script, possibly Tamil, on a palm leaf manuscript. The text is arranged in approximately 10 horizontal lines across the length of the leaf. The script is finely etched into the surface of the dried leaf. There are several dark, irregular holes and stains scattered across the leaf, most notably a large one on the right side and a smaller one on the left side, which are likely due to insect damage or mold over time.



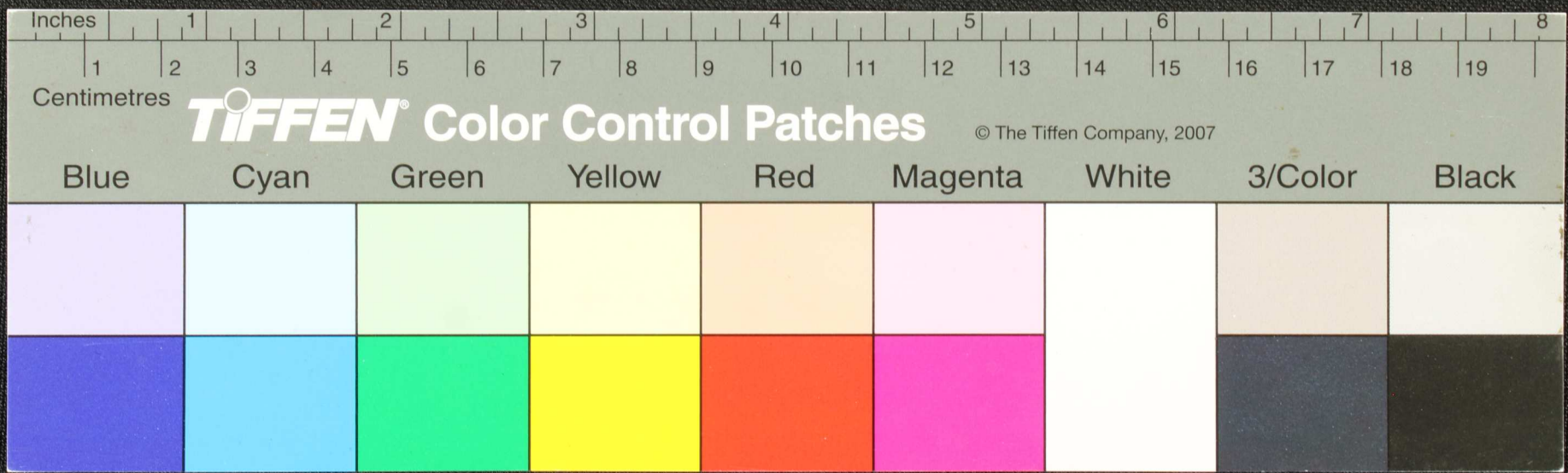


Handwritten text in Tamil script on a palm leaf manuscript. The text is densely packed and runs horizontally across the length of the leaf. There are two circular holes visible, which were traditionally used for threading a cord to bind multiple leaves together. The leaf shows signs of age, including some staining and wear at the edges.

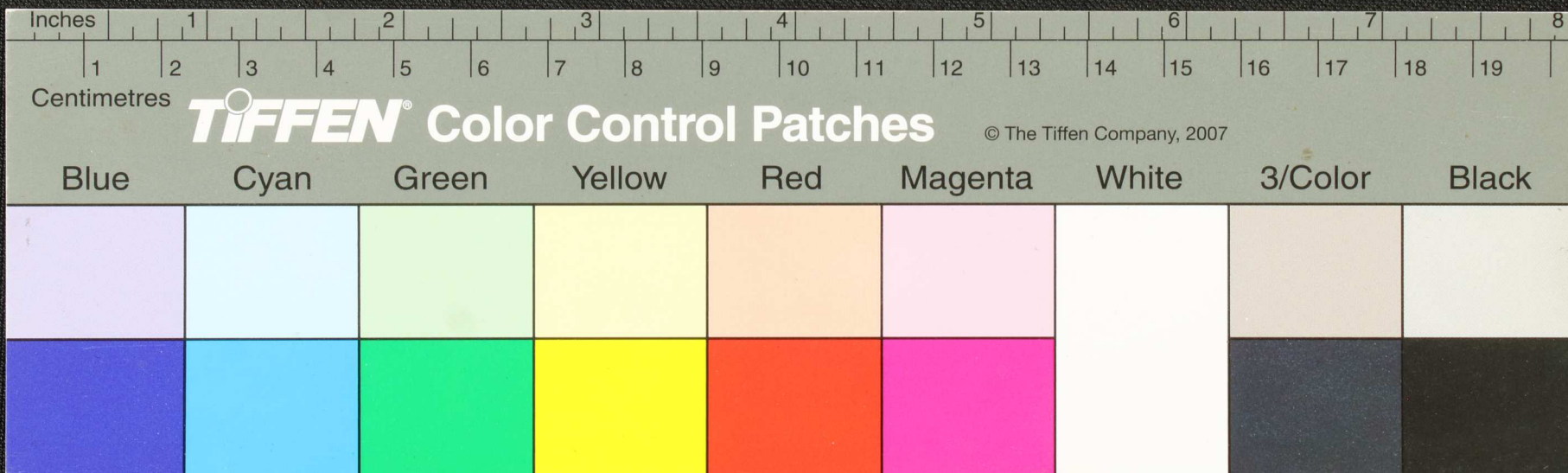




Handwritten text in Tamil script on a palm leaf manuscript. The text is densely packed and runs horizontally across the length of the leaf. There are two circular holes visible, which are traditional for threading a cord to bind multiple leaves together. The leaf shows signs of age and wear, with some dark spots and irregular edges.

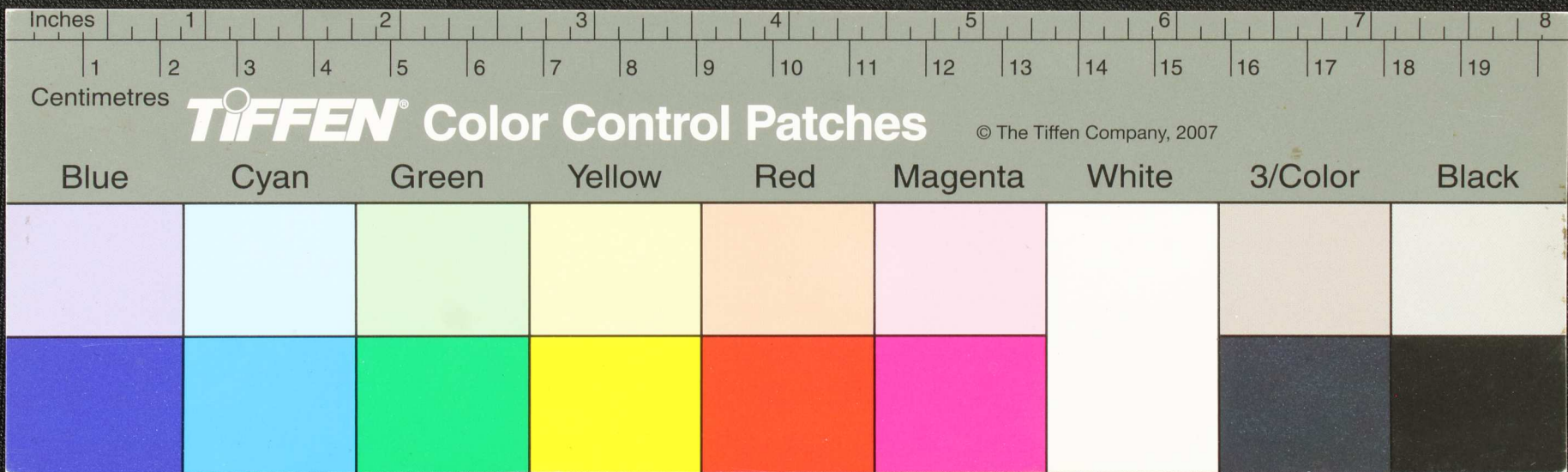






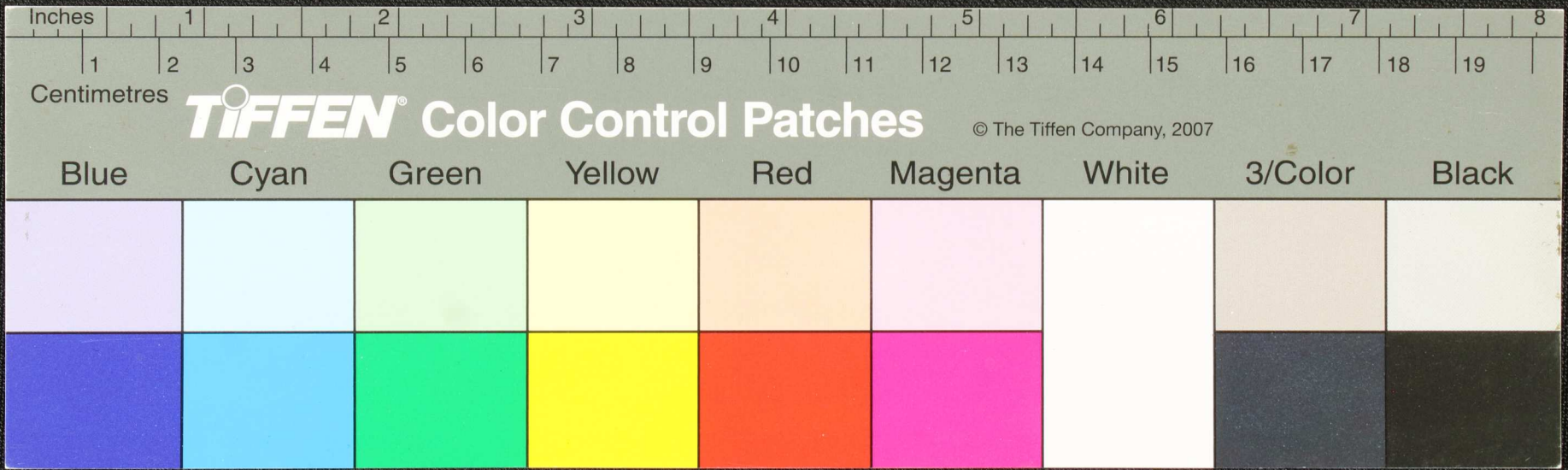


Handwritten text in Tamil script on a palm leaf manuscript. The text is arranged in approximately 10 horizontal lines. A large, irregular black ink blotch obscures a significant portion of the text in the middle-left area. The leaf shows signs of age, including small dark spots and a slightly uneven texture.



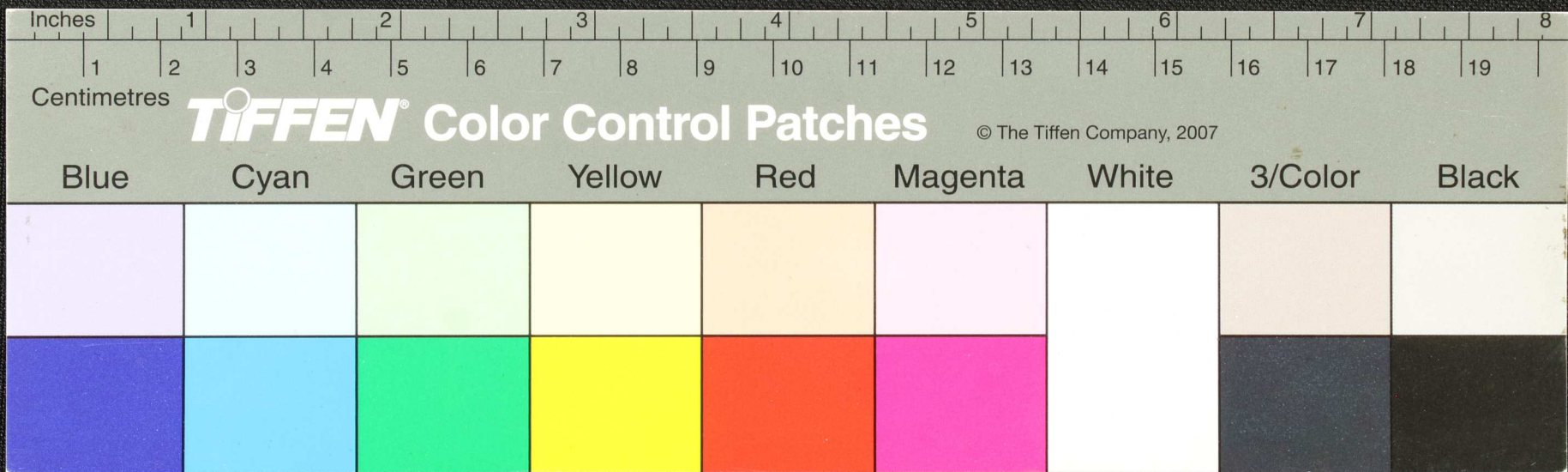


Handwritten text in Tamil script on a palm leaf manuscript. The text is densely packed and runs horizontally across the length of the leaf. There are several dark, irregular spots and holes scattered across the surface, likely due to insect damage or mold. The script is in an older form of the Tamil language.



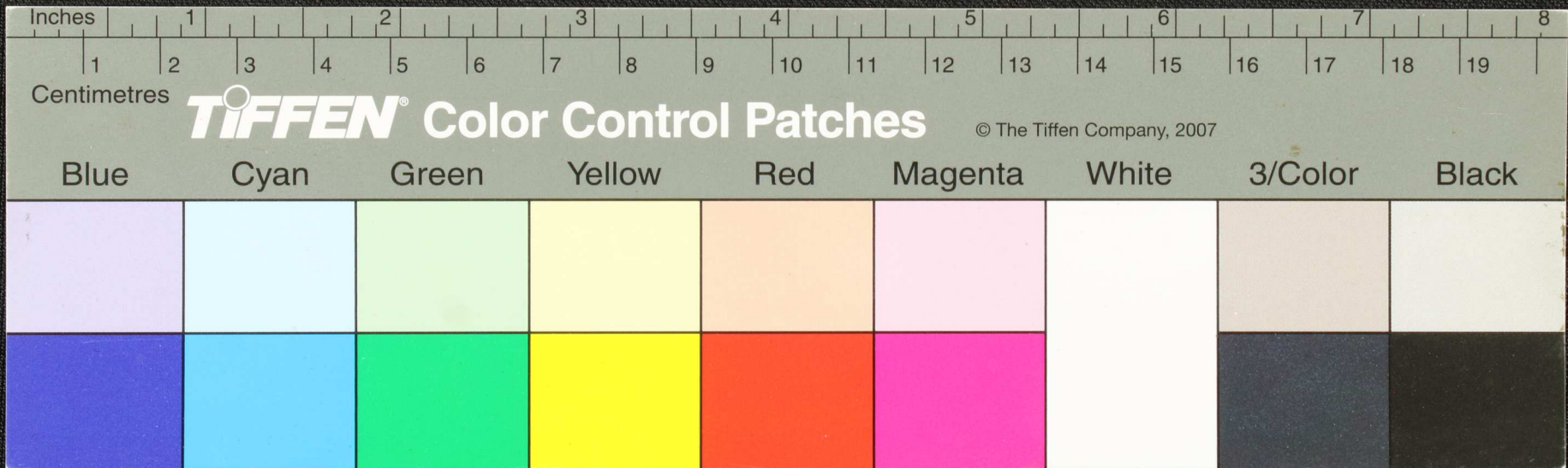


Handwritten text in Tamil script on a palm leaf manuscript. The text is arranged in approximately 10 horizontal lines across the length of the leaf. The script is densely packed and appears to be a form of classical or historical Tamil. There are several large, irregular black holes or damage marks scattered across the leaf, particularly in the upper and middle sections, which obscure some of the characters. The leaf itself is a light tan or yellowish-brown color, showing signs of age and wear.



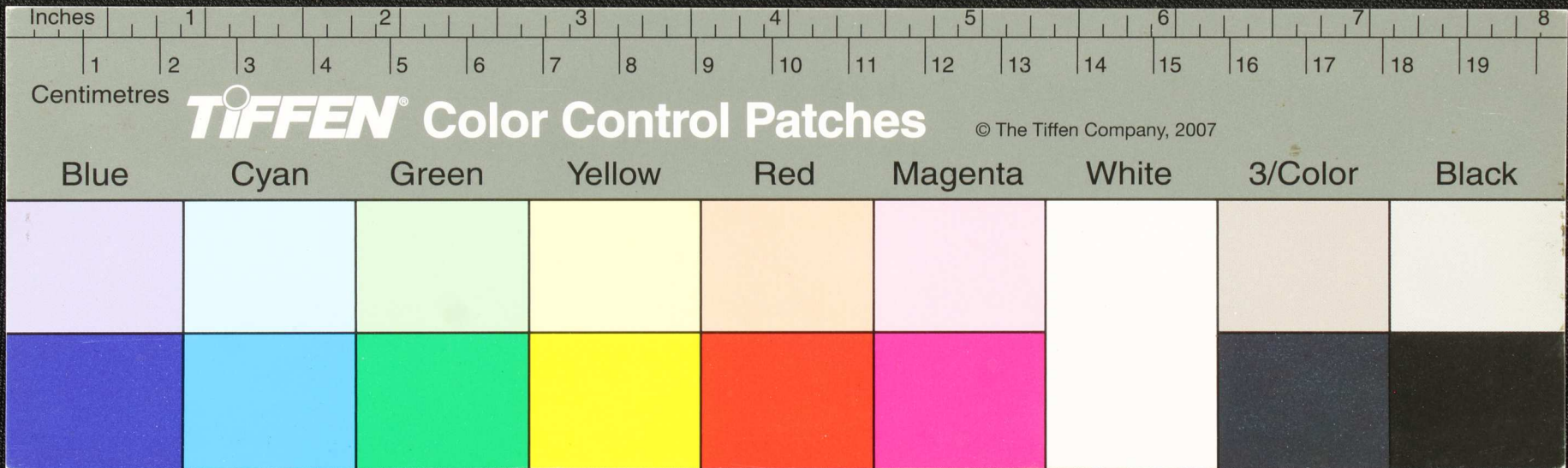


Handwritten text in an ancient script, likely Tamil, on a palm leaf manuscript. The text is arranged in approximately 10 horizontal lines across the length of the leaf. The script is finely etched into the surface of the dried leaf. There are several dark, irregular spots and holes scattered across the leaf, particularly in the middle and right sections, which are likely due to insect damage or mold over time.



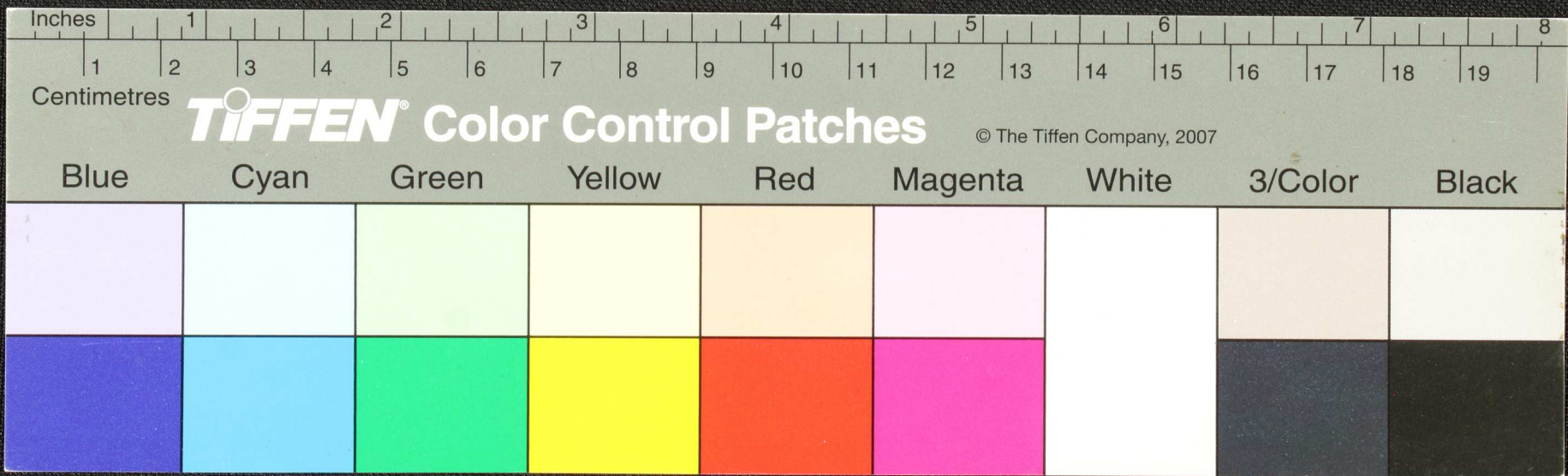


Handwritten text in Tamil script on a palm leaf manuscript. The text is densely packed and spans the length of the leaf, with some areas obscured by dark ink blotches or damage. The script is a traditional form of the Tamil language.



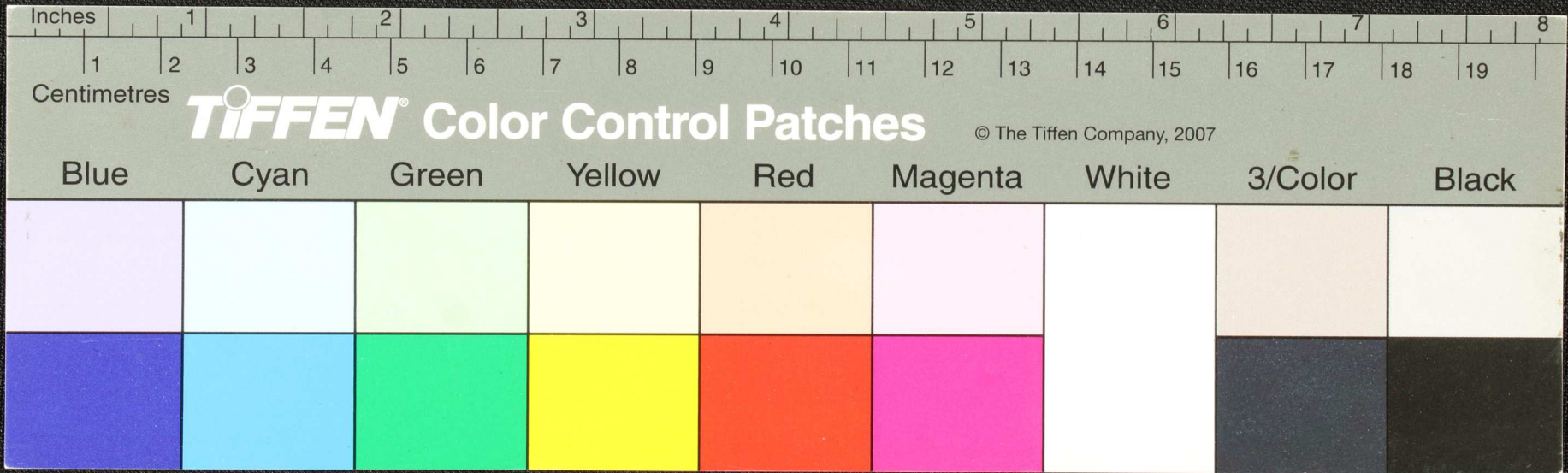


Handwritten text in an ancient script, possibly Tamil, on a palm leaf manuscript. The text is arranged in approximately 10 horizontal lines across the length of the leaf. There are several large, irregular black holes or damage marks scattered throughout the leaf, particularly in the middle and right sections, which obscure some of the characters. The leaf itself is aged and has a yellowish-brown hue.



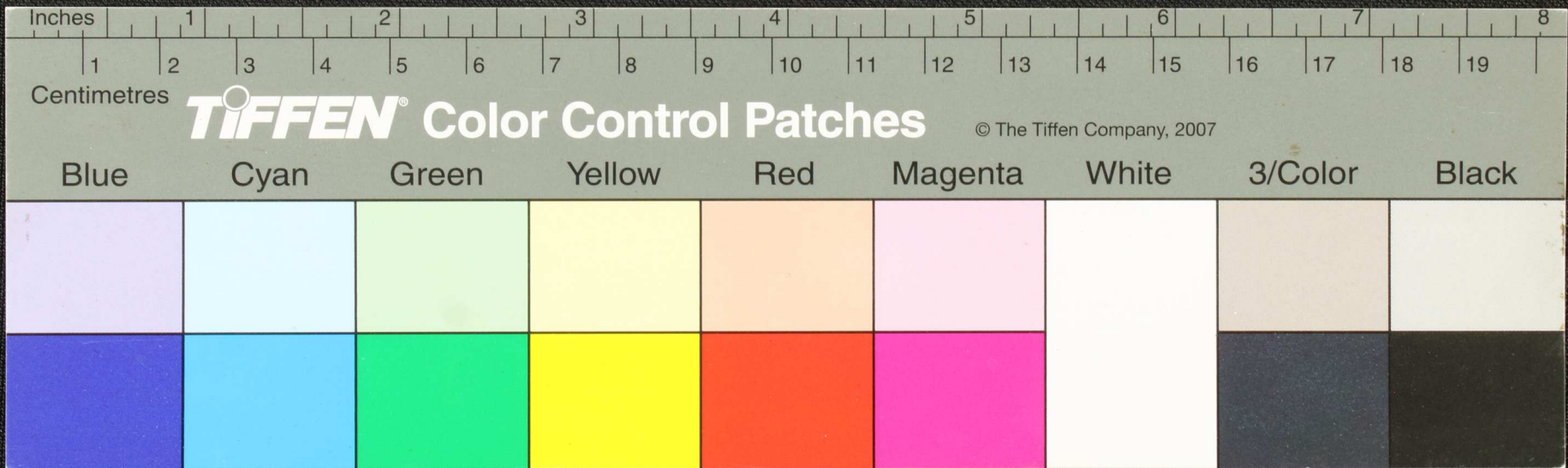


Handwritten text in Tamil script on a palm leaf manuscript. The text is arranged in approximately 12 horizontal lines across the length of the leaf. The script is dark and appears to be a traditional form of the Tamil language. There are several large, irregular holes and dark spots scattered across the leaf, likely due to insect damage or environmental factors. The leaf itself is a light tan or yellowish-brown color, showing signs of age and wear.





Handwritten text in an ancient script, likely Tamil, on a palm leaf manuscript. The text is arranged in approximately 10 horizontal lines across the length of the leaf. The script is finely etched into the surface of the dried leaf. There are two prominent circular holes, one near the left edge and one near the right edge, which were traditionally used for threading a cord to bind multiple leaves together into a book format. The leaf shows signs of age, including some darkening and wear, particularly at the edges.

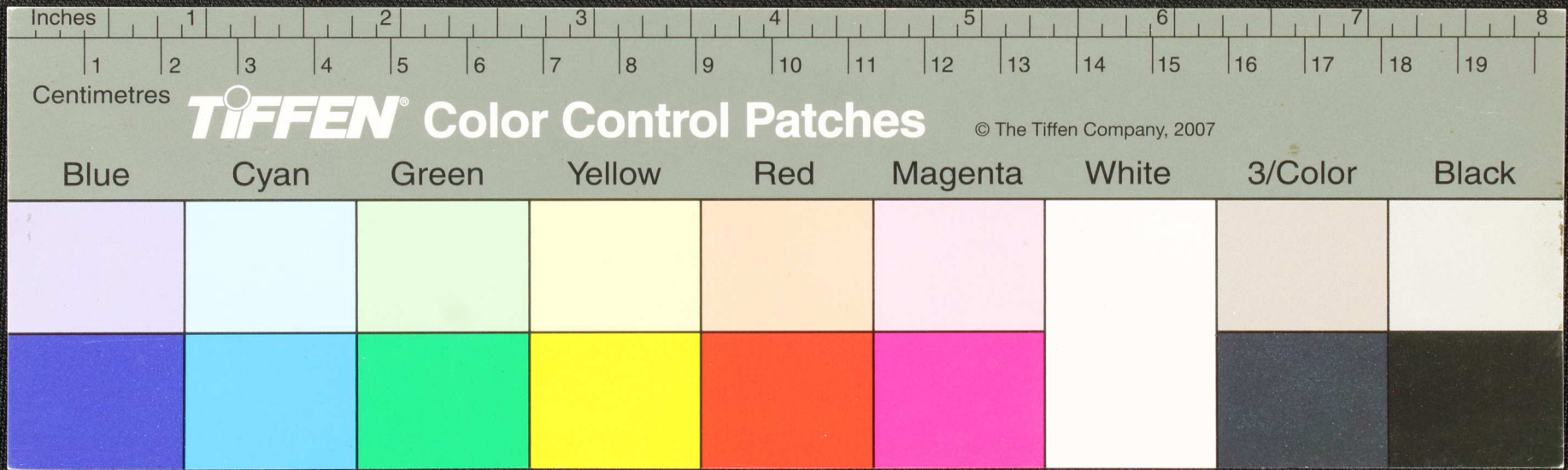






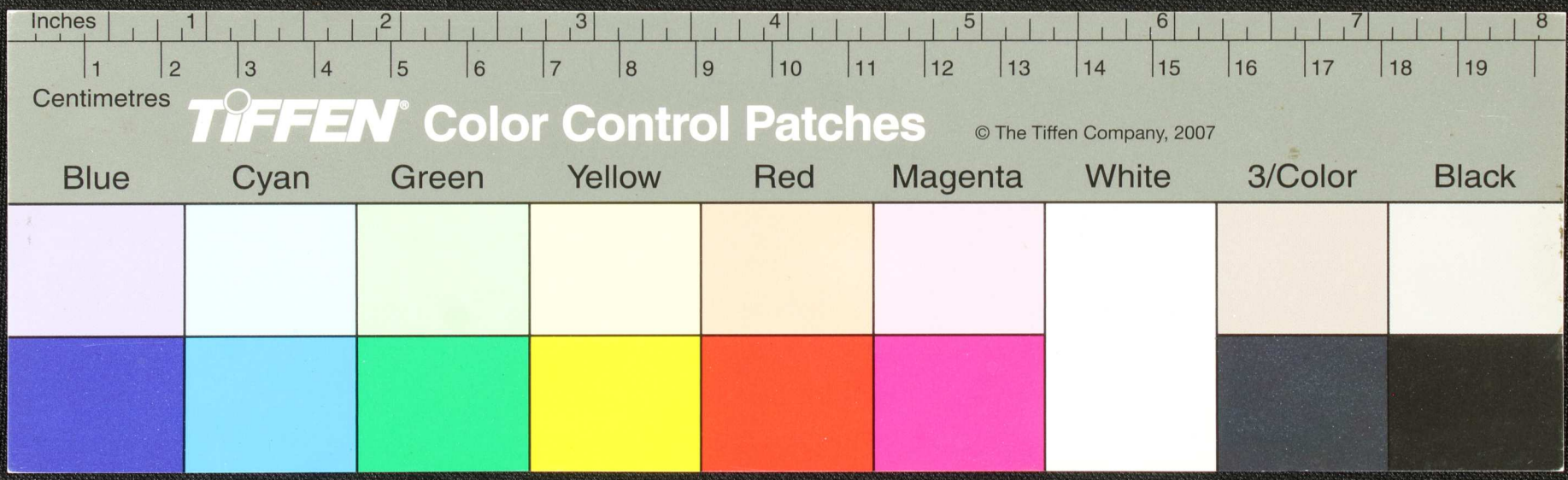


Fragment of a palm-leaf manuscript with handwritten text in an ancient script, possibly Tamil. The leaf is yellowed and shows signs of wear, including a large hole and smaller punctures. The text is arranged in approximately 10 horizontal lines across the length of the fragment.



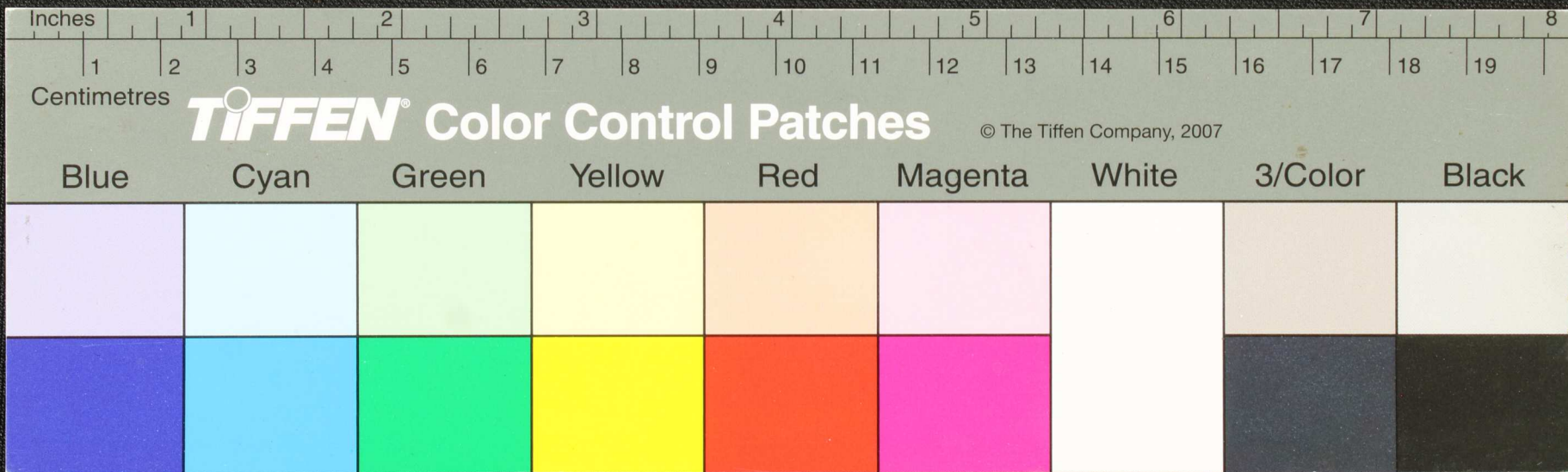


Handwritten text in an ancient script, possibly Tamil, on a palm leaf manuscript. The text is arranged in approximately 10 horizontal lines across the length of the leaf. The script is finely etched into the surface of the dried leaf. There are several dark, irregular holes and tears, particularly on the left side and in the middle, which are characteristic of insect damage or physical wear over time. The leaf is yellowish-brown in color due to its age.



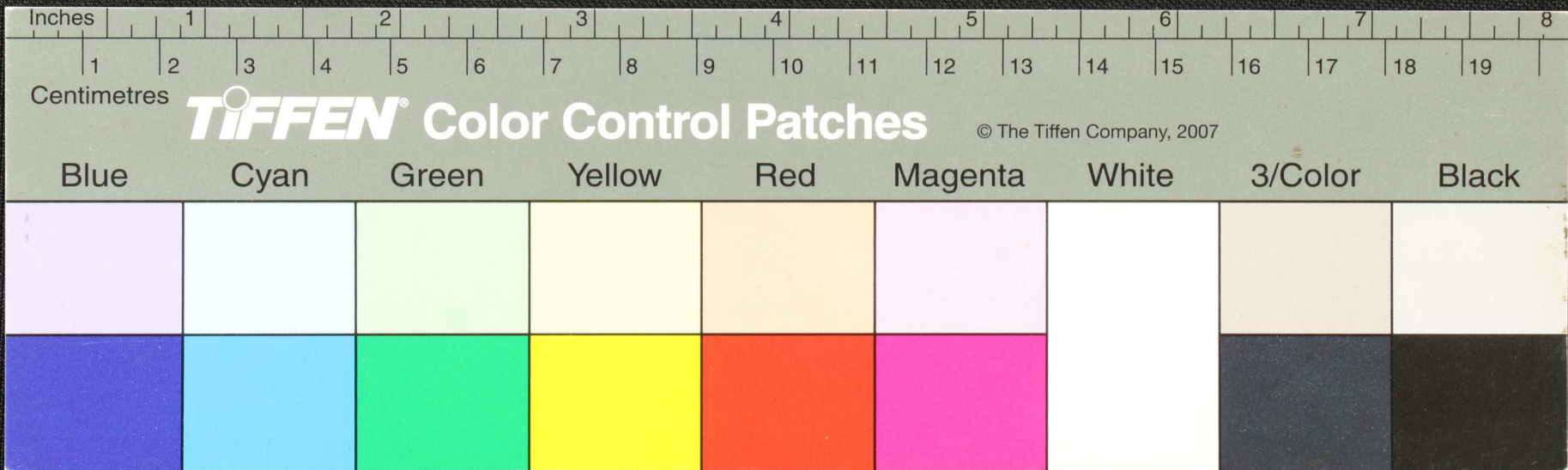


Fragment of an ancient papyrus scroll with handwritten text in a cursive script, possibly Demotic or Hieroglyphic. The text is heavily damaged and partially obscured by a large dark stain on the right side.



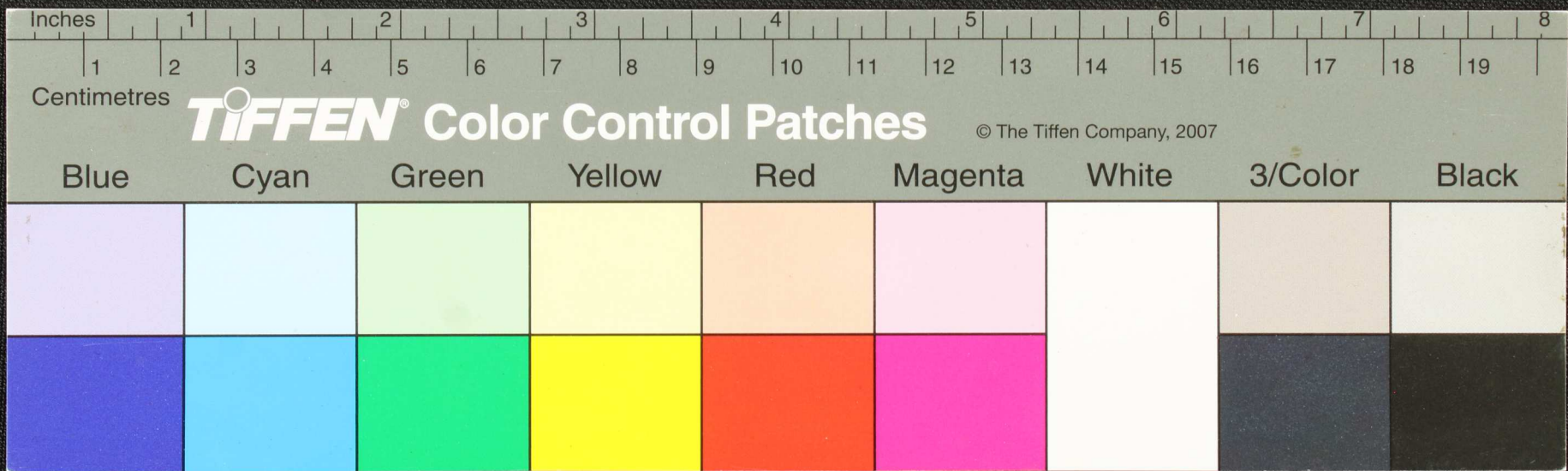


Fragment of an ancient papyrus scroll with handwritten text in a cursive script, possibly Demotic or Hieroglyphic. The text is heavily damaged and partially obscured by dark, irregular stains and a large blacked-out area on the right side.





Fragment of an ancient manuscript with handwritten text in an unknown script, possibly Tamil. The fragment is heavily damaged, showing significant insect damage and two circular holes. The text is arranged in approximately 10 horizontal lines across the length of the strip.

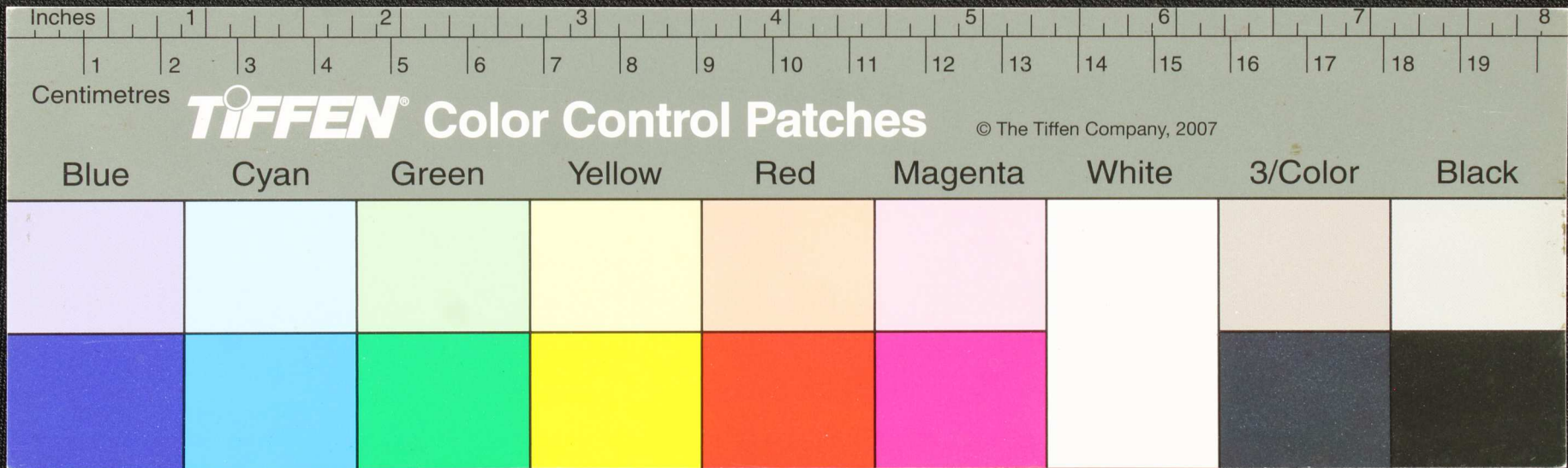






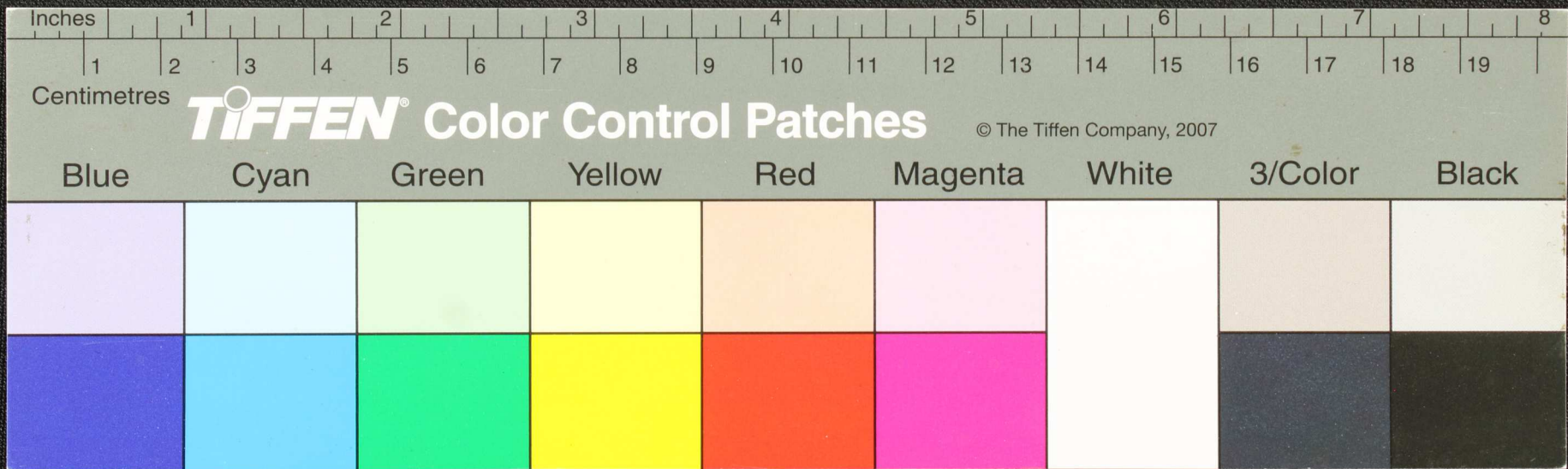


Handwritten text in an ancient script, possibly Tamil, on a palm leaf manuscript. The text is arranged in approximately 10 horizontal lines across the length of the leaf. The script is finely etched into the surface of the dried leaf. There are two circular holes visible, which were traditionally used for threading a cord to bind multiple leaves together into a book format. The leaf shows signs of age, including some dark spots and irregular edges.



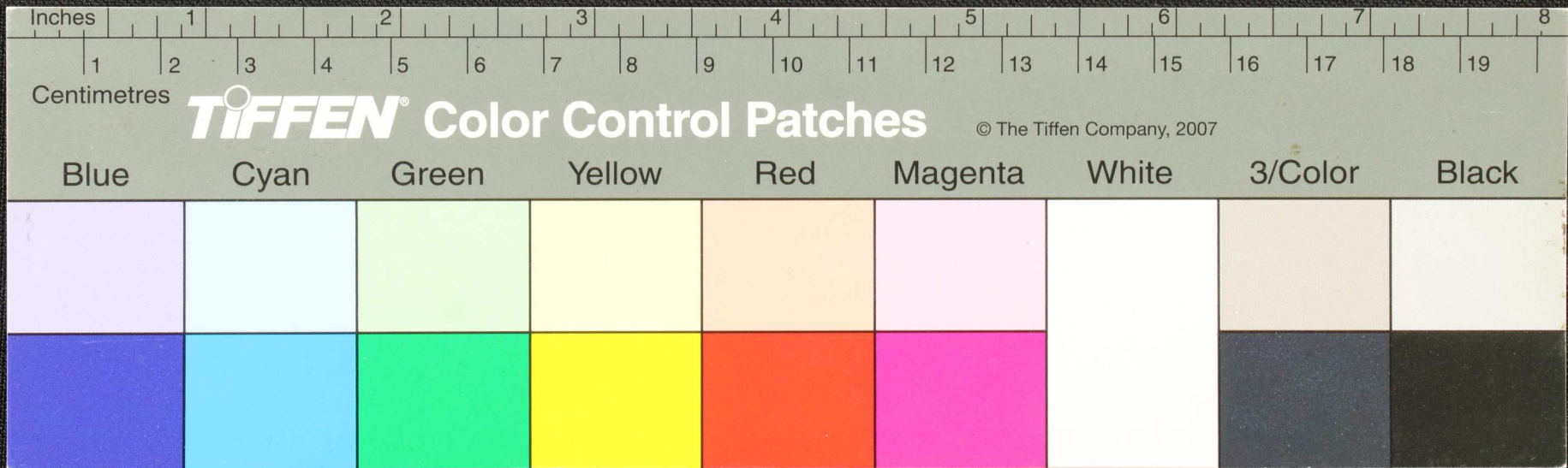


Handwritten text in an ancient script, possibly Tamil, on a palm leaf manuscript. The text is arranged in approximately 10 horizontal lines across the length of the leaf. The script is finely etched into the surface of the dried leaf. The leaf shows signs of age, including dark spots and some physical damage, particularly at the left end where it is torn and irregularly shaped.



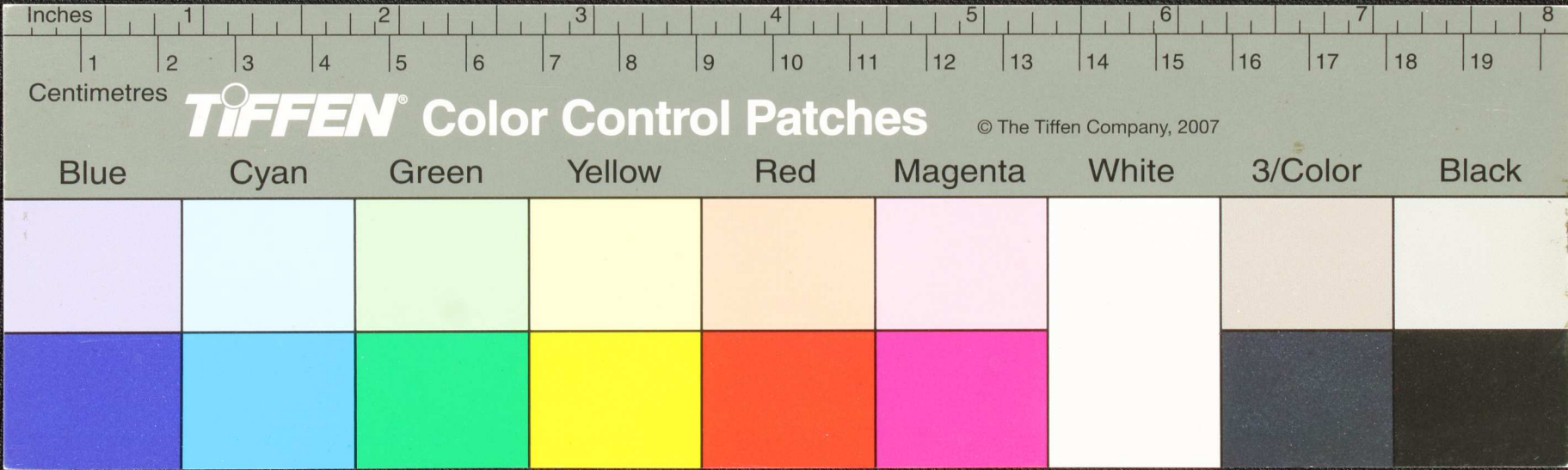


Fragment of an ancient papyrus scroll with handwritten text in a cursive script, possibly Demotic or Hieroglyphic. The text is arranged in approximately 10 horizontal lines across the length of the fragment. The papyrus is heavily damaged, with significant portions missing, particularly in the center and right-hand side, leaving large gaps in the text. The remaining text is dark and difficult to decipher due to the age and damage.



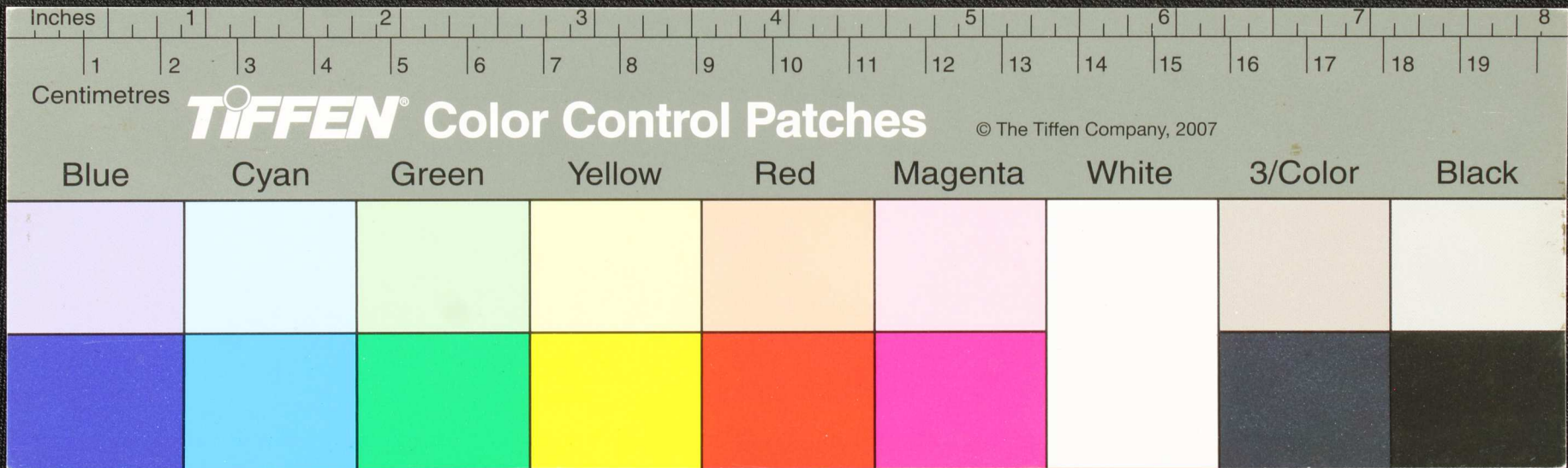


Fragment of ancient papyrus with handwritten text in a cursive script, possibly Demotic or Hieroglyphic. The text is heavily obscured by dark ink blotches and physical damage to the papyrus fibers.



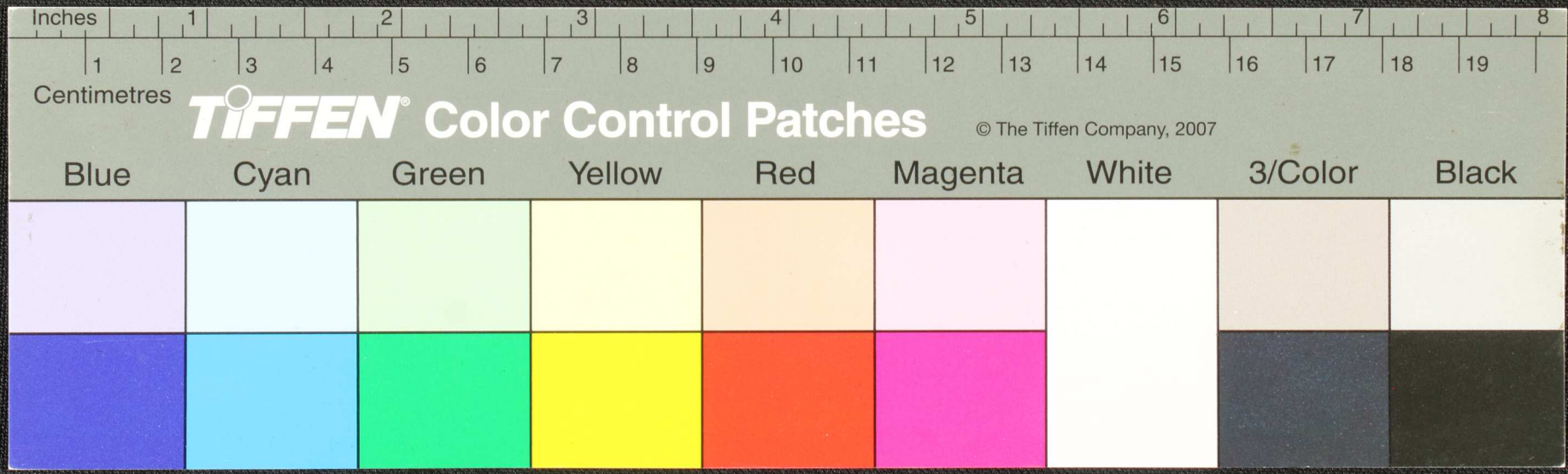


Handwritten text in an ancient script, possibly Tamil, on a palm leaf manuscript. The text is arranged in approximately 10 horizontal lines across the length of the leaf. The script is finely etched into the surface of the dried leaf. The leaf shows signs of age and wear, with some dark spots and irregular edges.





Handwritten text in an ancient script, possibly Tamil, on a fragment of aged, yellowed paper. The text is arranged in approximately 10 horizontal lines. The paper is heavily damaged, with significant portions missing, particularly in the center and right side, leaving large irregular holes. The ink is dark and somewhat faded, making some characters difficult to discern. The fragment is roughly rectangular, measuring about 4 inches in length and 1.5 inches in height.

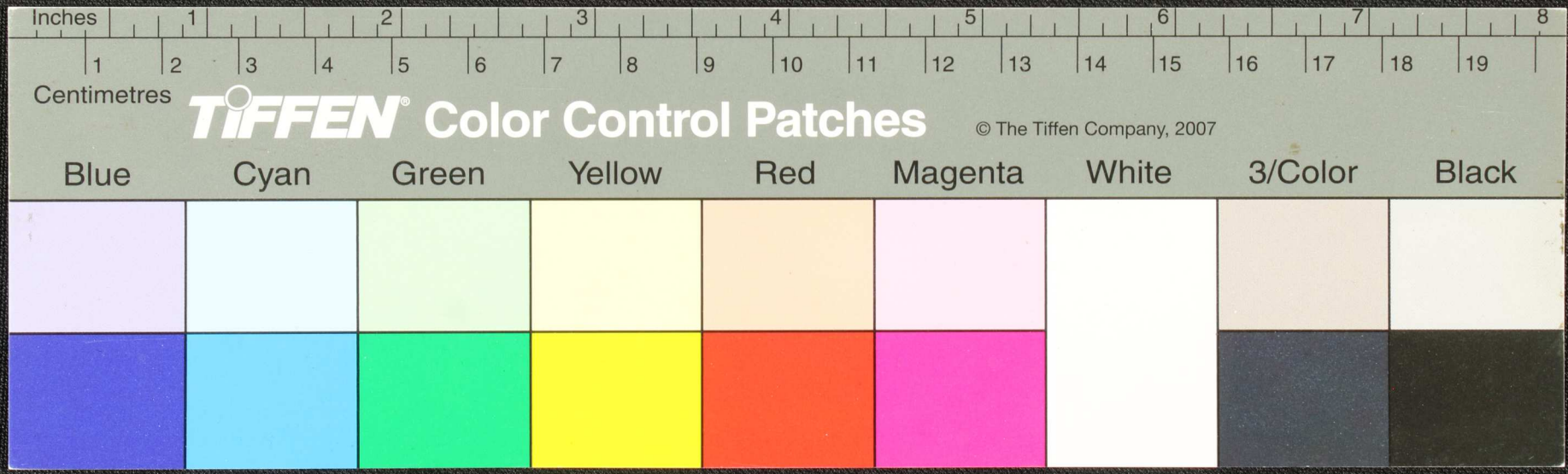






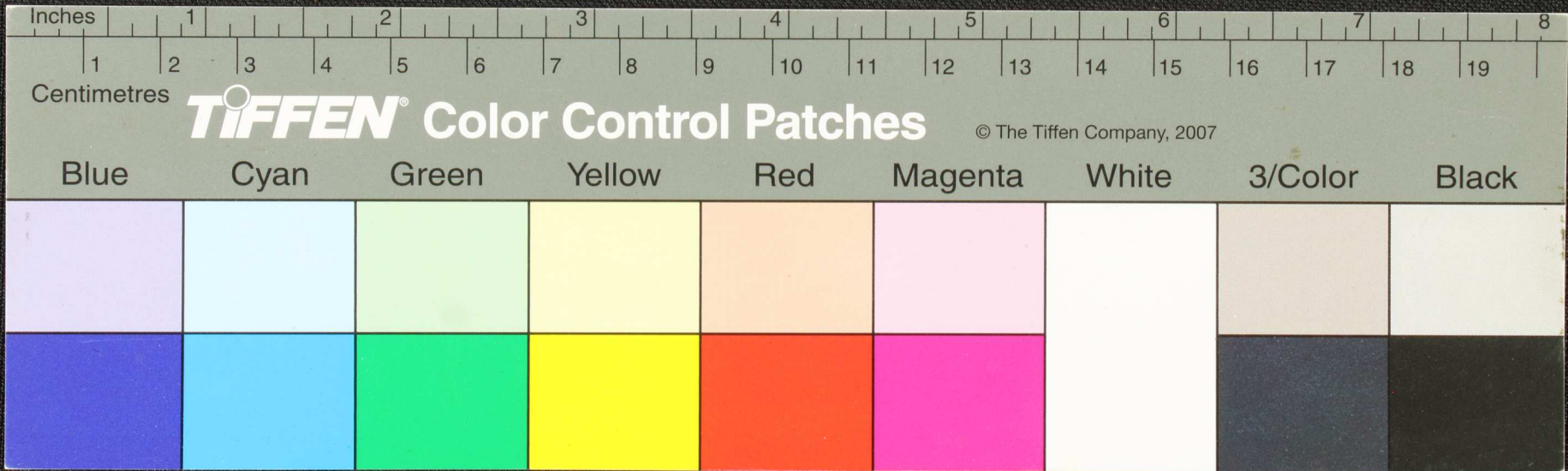


Handwritten text in Tamil script on a palm leaf manuscript. The text is arranged in approximately 10 horizontal lines across the length of the leaf. The script is finely etched into the surface of the dried leaf. The leaf shows signs of age and wear, with some fraying and a large hole in the center.





Fragment of an ancient manuscript, likely a scroll, featuring several lines of handwritten text in an ancient script, possibly Pahlavi or Sogdian. The text is written in dark ink on a light-colored, aged parchment or paper. The fragment is heavily damaged, with significant portions missing, particularly along the top and left edges, where the text is obscured by dark, irregular marks. The remaining text is arranged in approximately 10-12 horizontal lines, though many characters are difficult to decipher due to the script's complexity and the fragment's condition.

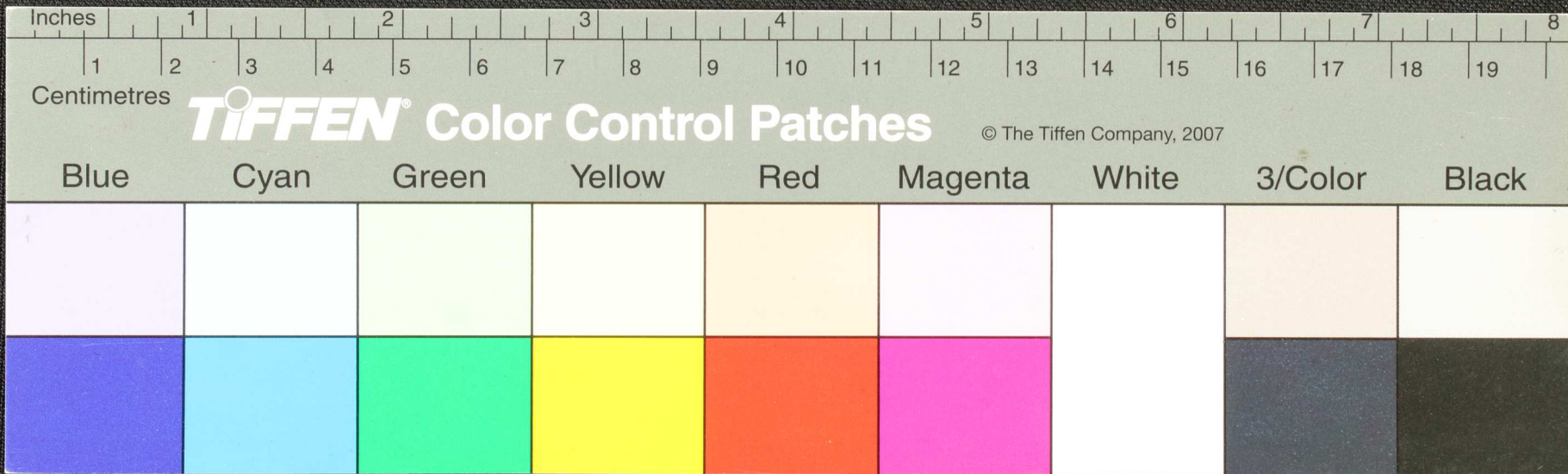






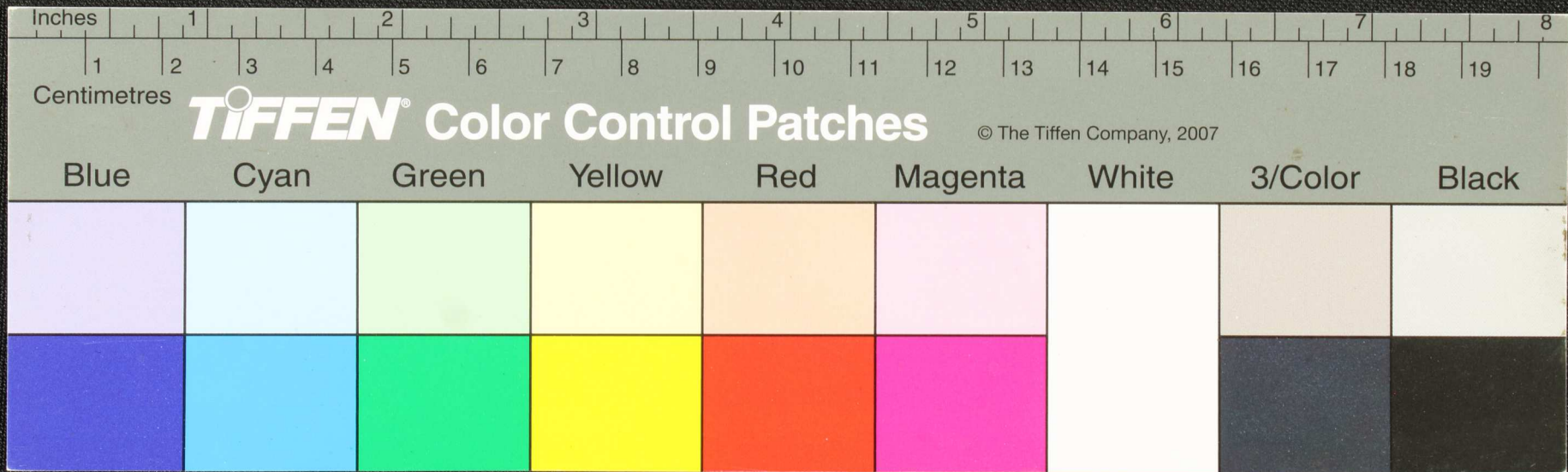


Handwritten text in an ancient script, possibly Tamil, on a yellowish, damaged strip of material. The text is arranged in several lines and is partially obscured by large, irregular holes and dark stains. The script is finely etched or written into the surface of the material.



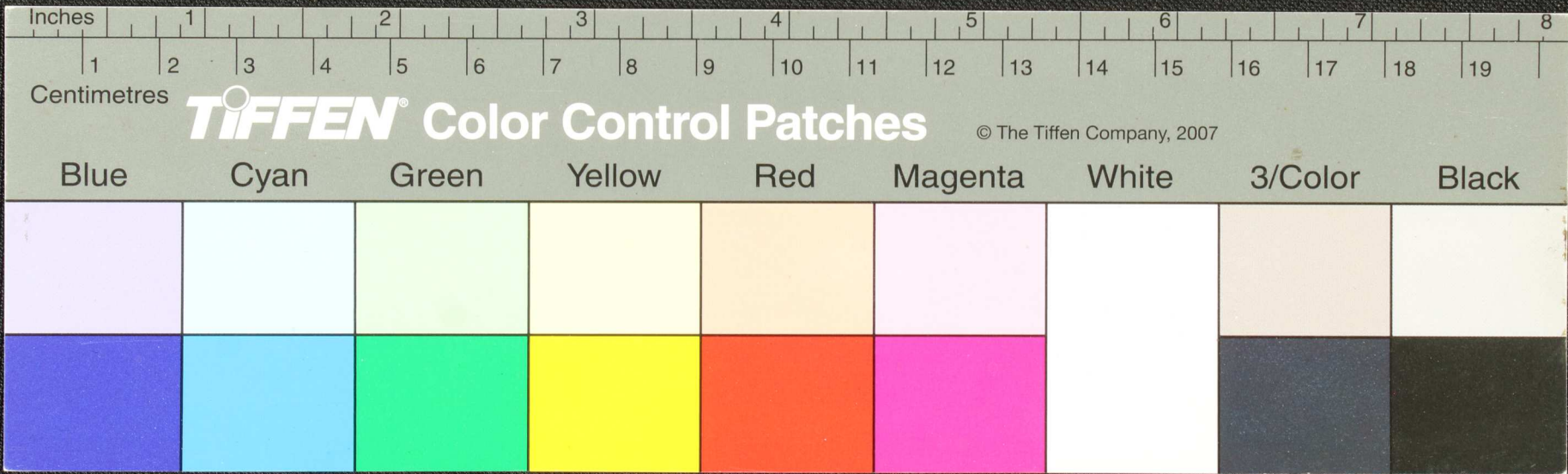


Fragment of an ancient manuscript, likely a palm leaf, featuring handwritten text in an Indic script. The text is arranged in horizontal lines across the leaf, which shows signs of wear and damage, including a large irregular hole in the center. The script appears to be a form of Tamil or Grantha, with characters written in dark ink. Some characters are circled or underlined, possibly indicating specific words or symbols. The leaf is yellowish-brown in color due to age.





Fragment of an ancient manuscript, likely a papyrus scroll, featuring several lines of handwritten text in an ancient script, possibly Coptic or Greek. The fragment is heavily damaged, with significant portions missing and the remaining text obscured by dark ink blotches and holes. The text is arranged in approximately five horizontal lines across the fragment.





Handwritten text in an ancient script, possibly Tamil, on a palm leaf manuscript. The text is arranged in several lines and is partially obscured by a large, irregular hole in the center of the leaf. The script is finely etched into the surface of the dried leaf.

