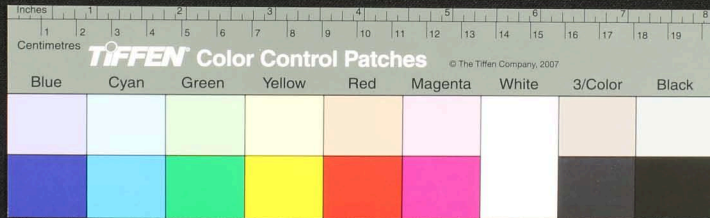
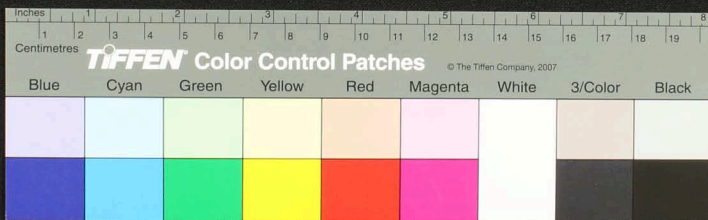


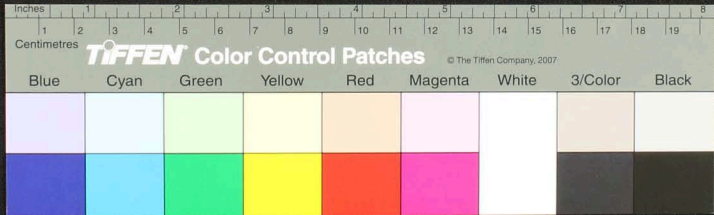


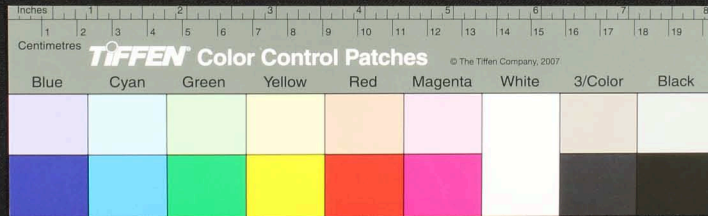
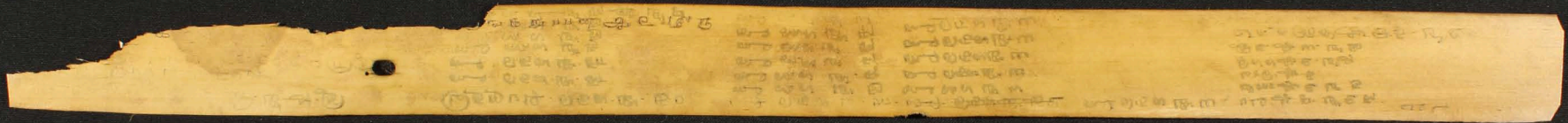
Handwritten text in Tamil script on a palm leaf manuscript. The text is arranged in three lines and appears to be a religious or philosophical passage. The first line begins with a small symbol resembling a crescent moon and a star. The script is finely etched into the surface of the dried leaf.



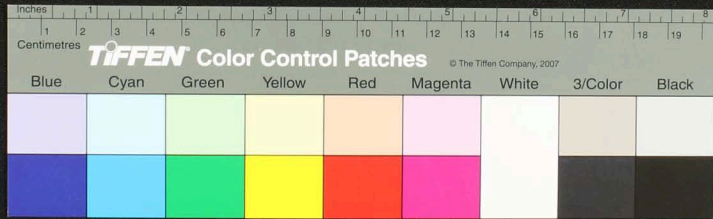


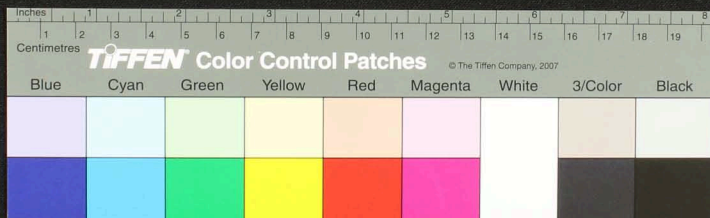
Handwritten Tamil script on a palm leaf manuscript. The text is arranged in several columns and includes various characters and symbols, such as 'சு' and 'ஊ'. The leaf shows signs of age and wear, with some damage on the left side.





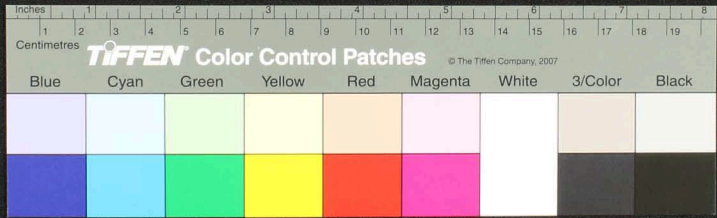
Handwritten Tamil script on a palm leaf manuscript strip. The text is arranged in several lines across the length of the leaf. A small circular hole is visible on the left side of the leaf, used for binding multiple leaves together.



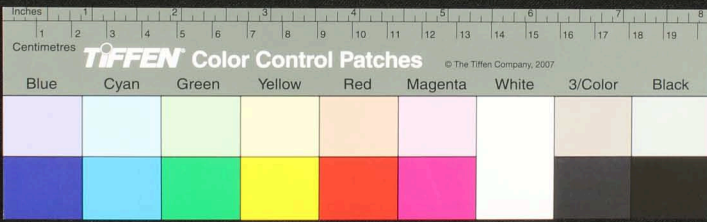




Handwritten Tamil script on a palm leaf manuscript. The text is arranged in three lines across the length of the leaf. The first line on the left contains approximately 15 characters. The second line contains approximately 25 characters. The third line contains approximately 35 characters. The script is written in a traditional style with dark ink.



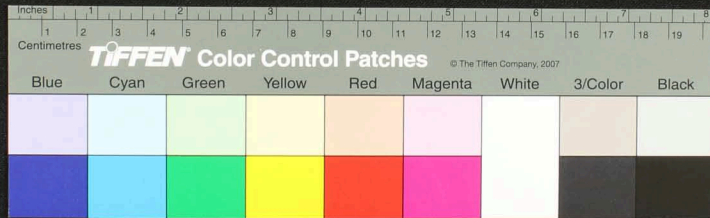
Handwritten text in Tamil script on a palm leaf manuscript. The text is arranged in several columns and includes various characters and symbols, such as 'சுதந்திரம்' and 'செய்தல்'.



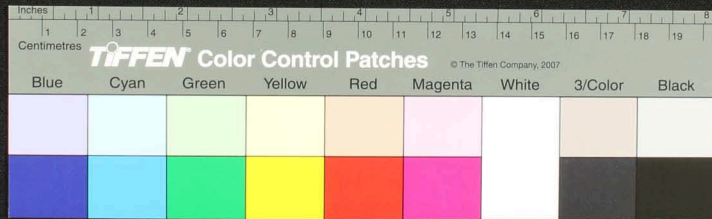
Handwritten text in Tamil script on a palm leaf manuscript. The text is arranged in two lines. The first line contains approximately 10 characters, and the second line contains approximately 12 characters. A small circular hole is visible on the left side of the leaf.



Handwritten Tamil script on a palm leaf manuscript. The text is arranged in several lines across the length of the leaf. A circular hole is visible on the left side, used for binding multiple leaves together.

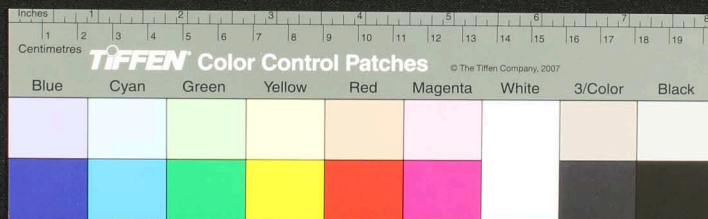
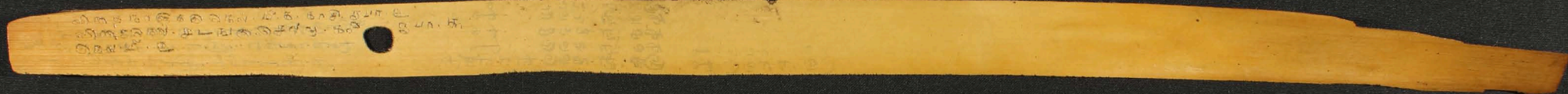


Handwritten text in Tamil script on a palm leaf manuscript. The text is arranged in several lines across the length of the leaf. A circular hole is visible on the left side of the leaf.

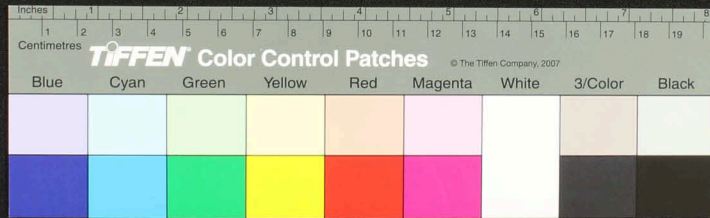


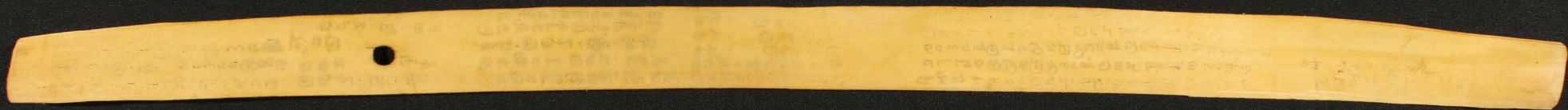
Handwritten text in Tamil script on a palm leaf manuscript. The text is arranged in several lines across the length of the leaf. A circular hole is visible on the left side, used for binding multiple leaves together.



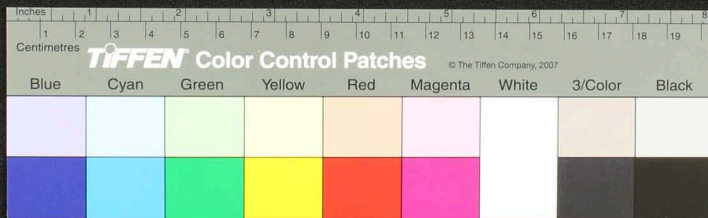


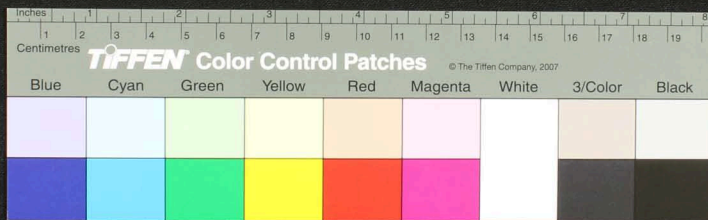
Handwritten Tamil script on a palm leaf manuscript. The text is arranged in approximately 12 columns across the length of the leaf. A circular hole is visible near the left end, used for threading a cord to bind multiple leaves together. The script is a traditional form of Tamil, likely used for religious or philosophical purposes.



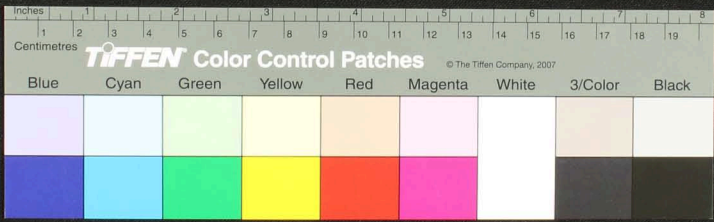


Handwritten text in Tamil script on a palm leaf manuscript. The text is arranged in several lines across the length of the leaf. A circular hole is visible on the left side of the leaf.

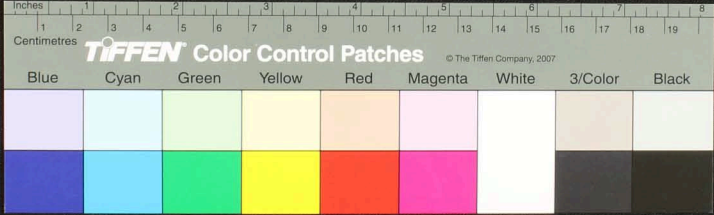




Handwritten text in Tamil script on a palm leaf manuscript. The text is arranged in several lines across the length of the leaf. A circular hole is visible on the left side of the leaf.



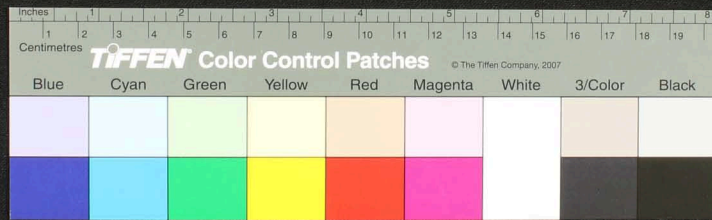
Handwritten text in Tamil script on a palm leaf manuscript. The text is arranged in several columns and includes names and titles such as 'செ. ம. அ.', 'செ. ம. ர.', 'செ. ம. ச.', 'செ. ம. க.', 'செ. ம. க. ர.', and 'செ. ம. க. ச.'. The script is written in a traditional style on a single leaf with a hole for binding.





Handwritten text in Tamil script on a palm leaf manuscript. The text is arranged in several columns and includes a circular hole on the left side. The script appears to be a form of historical or religious Tamil.





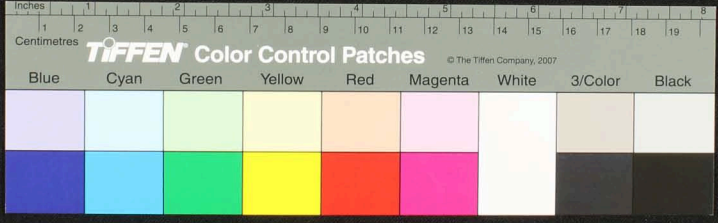
சு. அண்ணா (1) ஆய்வி. இ. அ. இ.
கு. எ. ம. 5 மரணித்தது

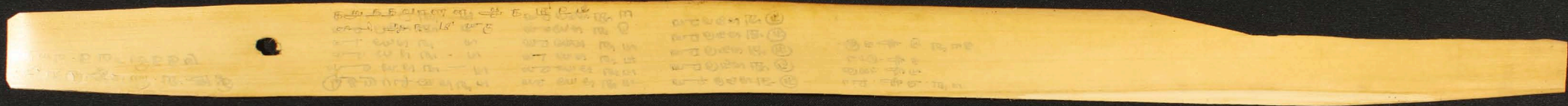
முதற்படி. எ. ல. ம. ர.
எ. ல. ம. ர. — ர.
எ. ல. ம. ர. — ர.
எ. ல. ம. ர. — ர.
எ. ல. ம. ர. — ர.

எ. ல. ம. ர. — ர.
எ. ல. ம. ர. — ர.
எ. ல. ம. ர. — ர.
எ. ல. ம. ர. — ர.
எ. ல. ம. ர. — ர.

எ. ல. ம. ர. — ர.
எ. ல. ம. ர. — ர.
எ. ல. ம. ர. — ர.
எ. ல. ம. ர. — ர.
எ. ல. ம. ர. — ர.

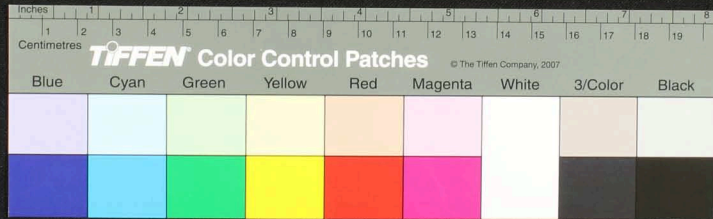
ப. டி. ஆ. டி. ம. ய.
வி. எ. ல. ம. ர.
உ. ல. ம. ர. — ர.
மு. க. ச. ரு. ம. ய. க.





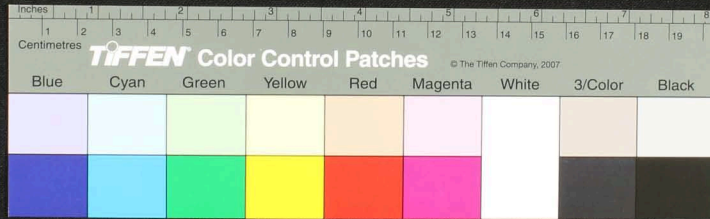
நாற்கொண்டி கல்வெட்டு
விவரம் பின்

சென். டி. ப
சென். டி. ப
சென். டி. ப
சென். டி. ப
சென். டி. ப
சென். டி. ப
சென். டி. ப
சென். டி. ப
சென். டி. ப
சென். டி. ப





Handwritten markings on the left side of the object, possibly in a non-Latin script, including a small circular mark.



Inches 1 2 3 4 5 6 7 8

Centimetres 1 2 3 4 5 6 7 8 9 10 11 12 13 14 15 16 17 18 19

TIFFEN Color Control Patches © The Tiffen Company, 2007

Blue	Cyan	Green	Yellow	Red	Magenta	White	3/Color	Black
[Blue patch]	[Cyan patch]	[Green patch]	[Yellow patch]	[Red patch]	[Magenta patch]	[White patch]	[3/Color patch]	[Black patch]
[Dark Blue patch]	[Dark Cyan patch]	[Dark Green patch]	[Dark Yellow patch]	[Dark Red patch]	[Dark Magenta patch]	[Dark White patch]	[Dark 3/Color patch]	[Dark Black patch]

Handwritten Tamil script on a palm leaf manuscript strip. The text is arranged in approximately 10 columns, with some lines starting with a circular symbol. The script is densely packed and appears to be a form of historical or religious text.

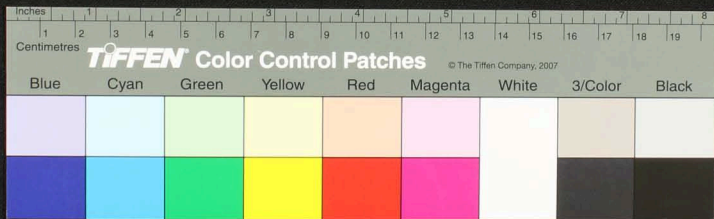


Handwritten Tamil script on a palm leaf manuscript strip. The text is arranged in several lines across the length of the leaf. A small circular hole is visible on the left side of the leaf, approximately one-third of the way from the left end.

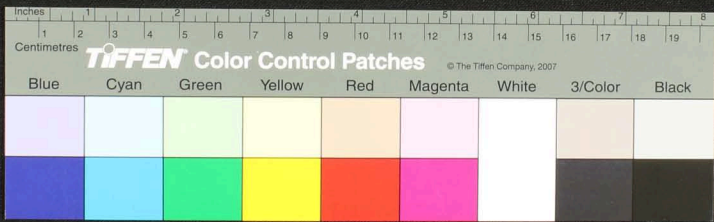




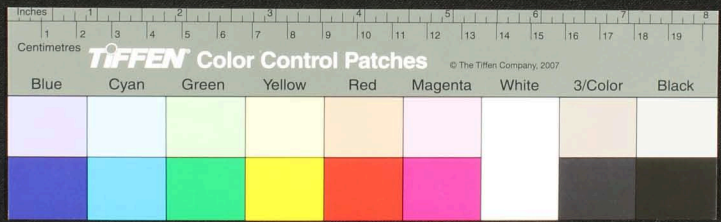
Handwritten Tamil script on a palm leaf manuscript. The text is arranged in approximately 10 columns across the length of the leaf. The script is finely etched into the surface of the dried leaf. The leaf shows signs of age and wear, with some fraying at the edges and a small hole on the left side.



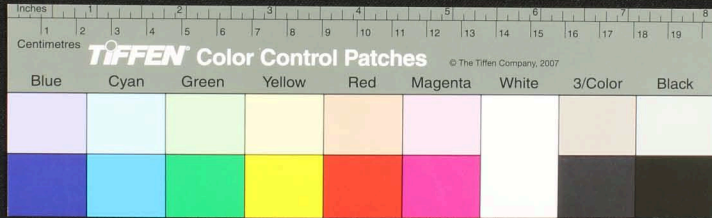
Handwritten Tamil script on a palm leaf manuscript. The text is arranged in approximately three horizontal lines across the length of the leaf. The script is finely etched into the surface of the dried leaf.

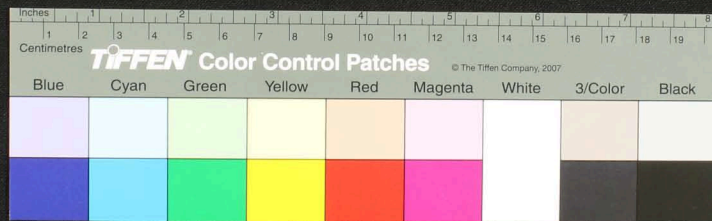


Handwritten Tamil script on a palm leaf manuscript. The text is inscribed in a single line across the length of the leaf. A small hole is visible near the left end, used for threading a cord to bind multiple leaves together.

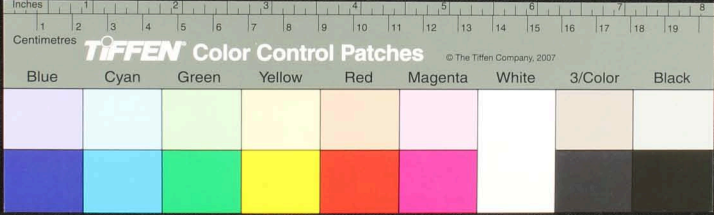


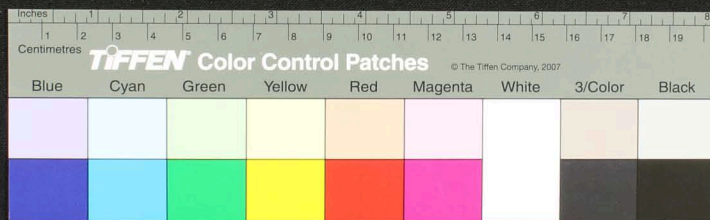
Handwritten text in Tamil script on a palm leaf manuscript. The text is arranged in several lines across the length of the leaf. A small circular hole is visible on the left side of the leaf.



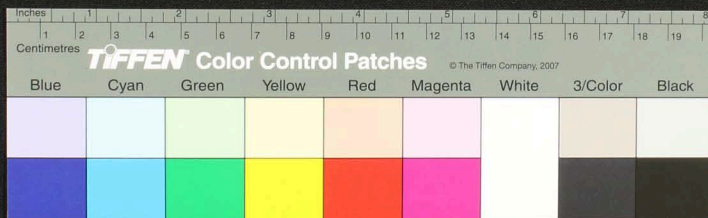


Handwritten text in Tamil script on a palm leaf manuscript strip.



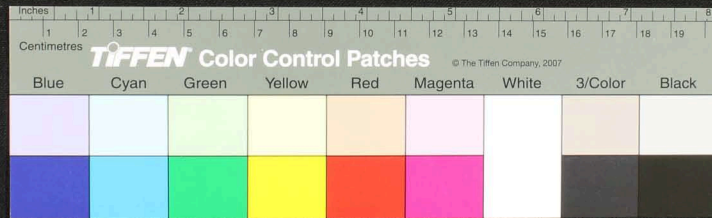


Handwritten text in Tamil script on a palm leaf manuscript. The text is arranged in several lines across the length of the leaf. A small circular hole is visible on the left side of the leaf.

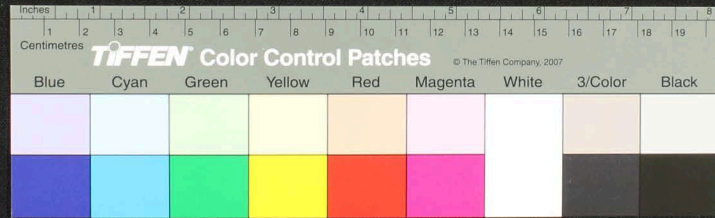


Handwritten text in Tamil script on a palm leaf manuscript. The text is arranged in several columns across the length of the leaf. The script is finely etched into the surface of the dried leaf.

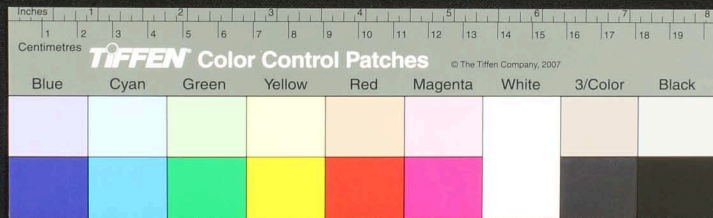




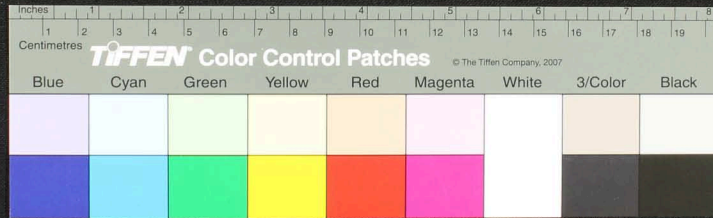
Handwritten text in Tamil script on a palm leaf manuscript strip. The text is arranged in two columns, one on the left and one on the right. The left column contains three lines of text, and the right column contains three lines of text. The script is finely etched into the surface of the dried leaf.



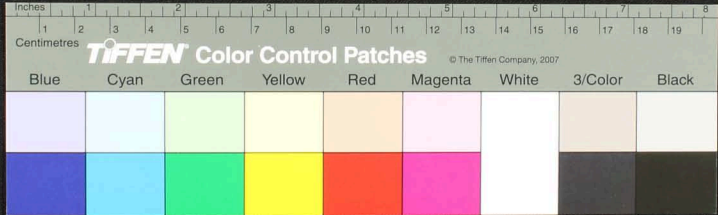
Handwritten text in Tamil script on a palm leaf manuscript. The text is arranged in several lines across the length of the leaf. On the right side, there is a signature or name written in Tamil: "சு. சிவசுந்தரம்".



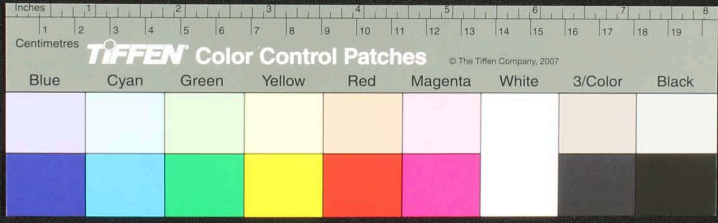
Handwritten text in Tamil script on a palm leaf manuscript. The text is arranged in several lines across the length of the leaf. The script is finely etched into the surface of the dried leaf. The text appears to be a historical record or a list of items, possibly related to a temple or a royal court, given the context of such manuscripts. The leaf shows signs of age, with some discoloration and a small hole near the left end.



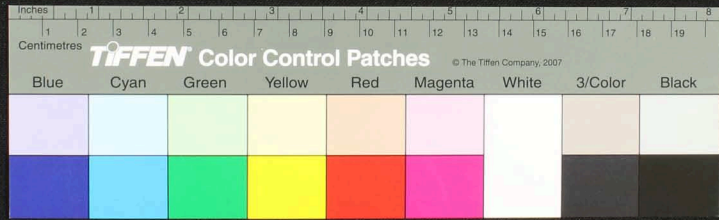
Handwritten Tamil script on a palm leaf manuscript strip. The text is arranged in three main sections from left to right. The first section on the left contains approximately 10 characters. The middle section contains a longer line of text, possibly including a name or title. The right section contains several lines of text, including what appears to be a date or a specific reference. The script is written in a traditional style with dark ink on the natural yellowish-brown surface of the leaf.



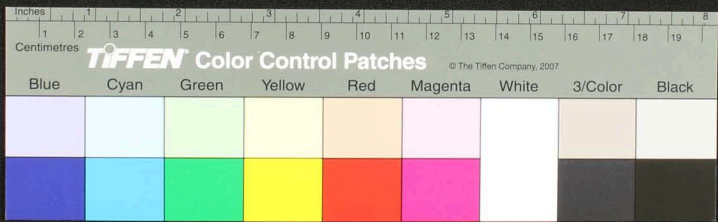
Handwritten text in Tamil script on a palm leaf manuscript. The text is arranged in several lines across the length of the leaf. A small hole is visible on the left side of the leaf.

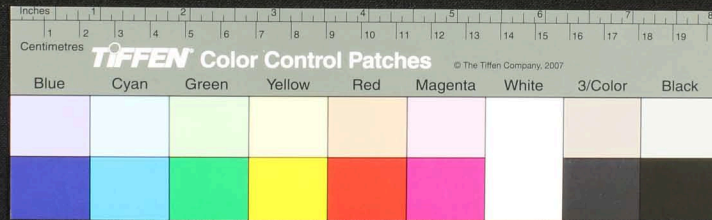
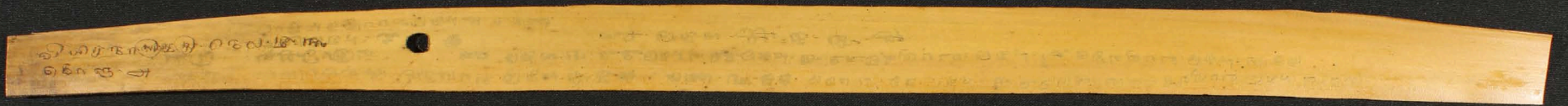


சுவாமிநாதர் திருநெல்வேலி மடத்துக்கு அளித்த பண்புகள். ஆ. யு. சூ. சூ.
 சுவாமிநாதர் திருநெல்வேலி மடத்துக்கு அளித்த பண்புகள். ஆ. யு. சூ. சூ.
 நடுநிலைநிலையர். ஆ. யு. சூ. சூ. நடுநிலைநிலையர். ஆ. யு. சூ. சூ.
 காயநிலைநிலையர். ஆ. யு. சூ. சூ. காயநிலைநிலையர். ஆ. யு. சூ. சூ.

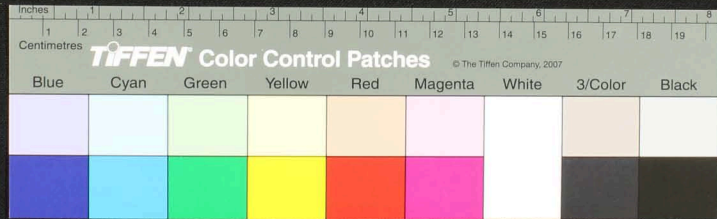


நஞ்சுயல்...
 உயிரிடுதது...
 உயிரிடுதது...
 உயிரிடுதது...
 உயிரிடுதது...





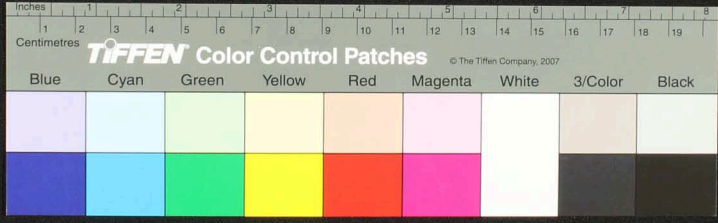
Handwritten Tamil script on a palm leaf manuscript. The text is arranged in several lines across the length of the leaf. A small hole is visible on the left side, used for binding multiple leaves together.



கருவியை இவ்வாறு மீட்டி வைத்து
 உபயோகிக்க வேண்டும். ஆ. மீட்டர்
 இயல்பு - மீட்டர் கருவி
 மீட்டர் கருவி

இவ்வாறு மீட்டர் கருவி வைத்துக் கொள்ள வேண்டும். ஆ. மீட்டர்
 மீட்டர் கருவி மீட்டர் கருவி மீட்டர் கருவி
 மீட்டர் கருவி மீட்டர் கருவி மீட்டர் கருவி
 மீட்டர் கருவி மீட்டர் கருவி மீட்டர் கருவி
 மீட்டர் கருவி மீட்டர் கருவி மீட்டர் கருவி

மீட்டர் கருவி மீட்டர் கருவி மீட்டர் கருவி
 மீட்டர் கருவி மீட்டர் கருவி மீட்டர் கருவி
 மீட்டர் கருவி மீட்டர் கருவி மீட்டர் கருவி
 மீட்டர் கருவி மீட்டர் கருவி மீட்டர் கருவி

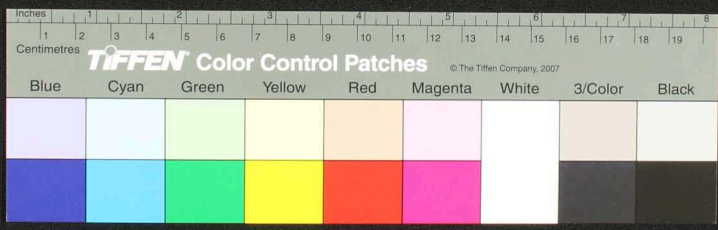


Handwritten text in Tamil script on a palm leaf manuscript strip. The text is arranged in three segments across the length of the leaf.

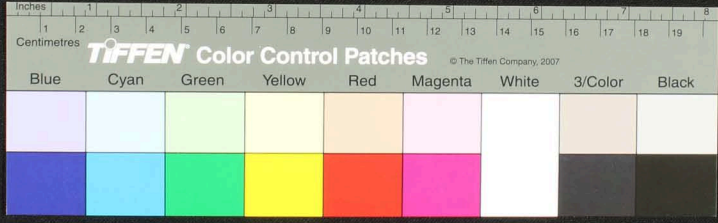
மா.மாணிக்கன்-வாஸ-ஸ்ரீ-ஸ்ரீ உதவியை
மா.கு.நவநாதன்-வாஸ-ஸ்ரீ-ஸ்ரீ

மா.கு.நவநாதன்-வாஸ-ஸ்ரீ-ஸ்ரீ உதவியை

மா.கு.நவநாதன்-வாஸ-ஸ்ரீ-ஸ்ரீ உதவியை

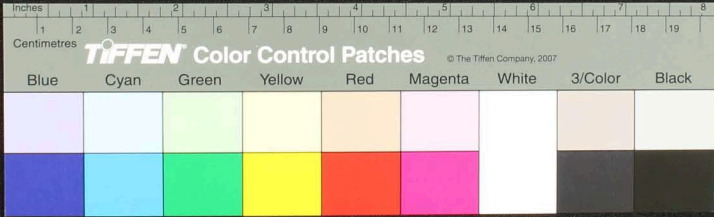


குமரநாதன் இயல்புடைய ஆசிரியர் வர. மீயல்
இதன் க. திணைமதிருகளைத் த. மீயல் என்புரியுமெய்யுடையவையுடைய
பா. இயல்புடையவையுடைய இயல்புடையவையுடையவையுடையவையுடையவையுடைய
க. இயல்புடையவையுடையவையுடையவையுடையவையுடையவையுடையவையுடையவையுடையவையுடைய

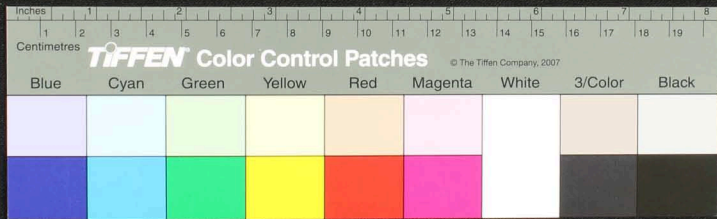


18	13	6	56
302	200	10	90
19	17		33
12	14	55	209
306	200		

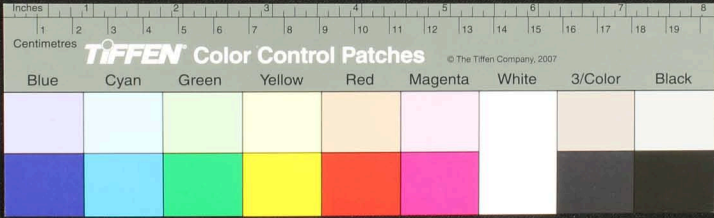
சீவிய பழைய பட்டாண்டி விளையிலிருந்து எடுத்த
 சீவிய பழைய பட்டாண்டி விளையிலிருந்து எடுத்த
 சீவிய பழைய பட்டாண்டி விளையிலிருந்து எடுத்த
 சீவிய பழைய பட்டாண்டி விளையிலிருந்து எடுத்த



Handwritten text in Tamil script on a palm leaf manuscript. The text is arranged in several lines across the length of the leaf. A small hole is visible on the left side of the leaf.

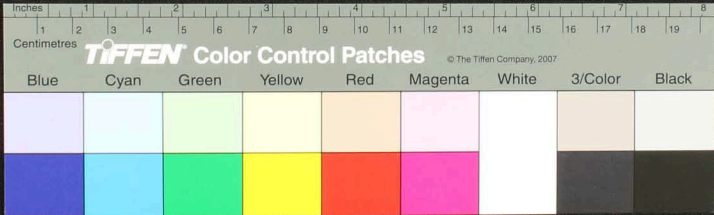


Handwritten text in Tamil script on a palm leaf manuscript strip. The text is arranged in three main sections from left to right. The first section on the left contains two lines of text. The middle section contains three lines of text. The right section contains two lines of text. A small circular hole is visible on the left side of the strip.

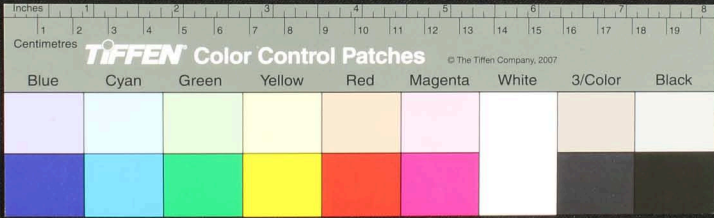


Handwritten Tamil script on a palm leaf manuscript strip. The text is arranged in approximately 10 horizontal lines across the length of the leaf. The script is a traditional form of the Tamil language, likely containing a list or record of names and titles. Some legible fragments include:

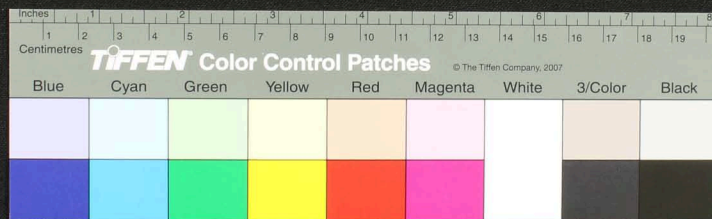
- செ. சிவசாமிநாதர்
- செ. சிவசாமிநாதர்
- செ. சிவசாமிநாதர்
- செ. சிவசாமிநாதர்
- செ. சிவசாமிநாதர்
- செ. சிவசாமிநாதர்
- செ. சிவசாமிநாதர்
- செ. சிவசாமிநாதர்
- செ. சிவசாமிநாதர்
- செ. சிவசாமிநாதர்



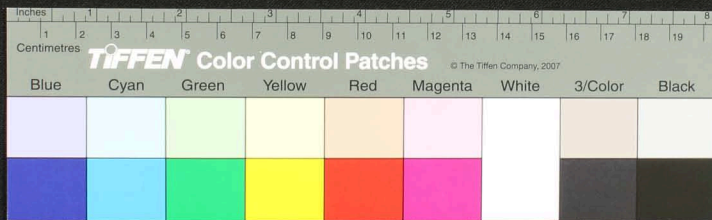
Handwritten Tamil script on a palm leaf manuscript. The text is arranged in approximately 10 horizontal lines across the length of the leaf. The script is finely etched into the surface of the dried leaf. On the right side, there are some faint numerical markings and possibly a small table or list of items.



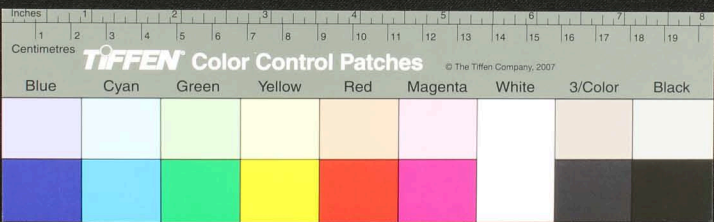
சென்னை அரசு பொதுப்பணித் துறை அமைச்சர் அலுவலகம்
சென்னை - 600 009



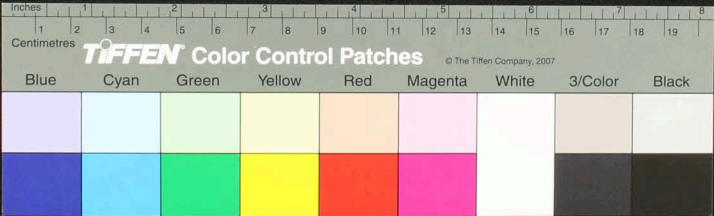
Handwritten text in Tamil script on a palm leaf manuscript strip. The text is arranged in approximately 12 horizontal lines. The script is a traditional form of the Tamil language. There is a small hole on the left side of the strip, which is a traditional feature for threading a cord to bind multiple leaves together. The leaf shows signs of age and wear, with some discoloration and a small tear near the center.



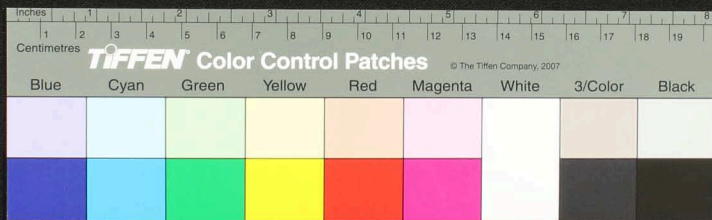
Handwritten text in Tamil script on a palm leaf manuscript strip. The text is arranged in three lines and includes a central signature. The right side of the leaf contains a date or reference number.



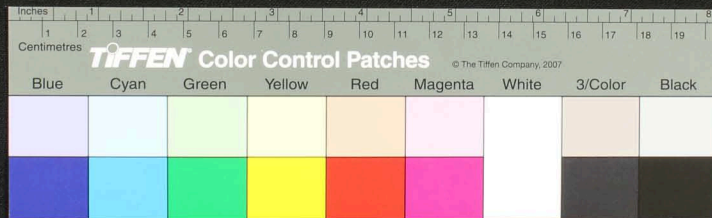
Handwritten text in Tamil script on a palm leaf manuscript. The text is arranged in three columns from left to right. The left column contains approximately 5 lines of text. The middle column contains approximately 2 lines of text. The right column contains approximately 5 lines of text. The script is finely etched into the surface of the dried leaf.



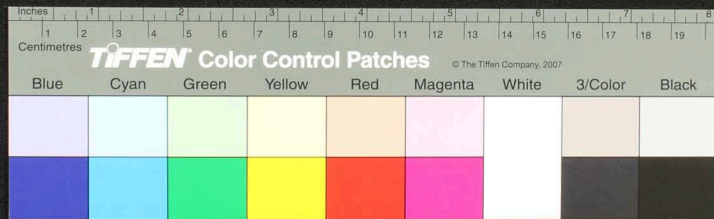
Handwritten text in Tamil script on a palm leaf manuscript. The text is arranged in approximately 10 horizontal lines across the length of the leaf. A small circular hole is visible on the left side, used for binding multiple leaves together. The script is finely etched into the surface of the dried leaf.



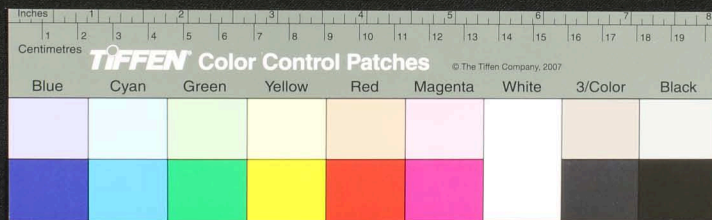
Handwritten Tamil script on a palm leaf manuscript. The text is arranged in several lines across the length of the leaf. On the left side, there is a circular hole, and the year '1907' is written in the middle section. The script appears to be a form of historical Tamil, possibly related to a record or a legal document.



Handwritten text in Tamil script on a palm leaf manuscript. The text is arranged in several lines across the length of the leaf. A small circular hole is visible on the left side of the leaf.



Handwritten text in Tamil script on a palm leaf manuscript strip. The text is arranged in several lines across the length of the leaf. A small circular hole is visible on the left side of the strip.



Handwritten Tamil script on a palm leaf manuscript strip. The text is arranged in three distinct sections from left to right. The first section on the left contains approximately 15 characters. The middle section contains approximately 15 characters. The right section contains approximately 15 characters. There are some irregularities and a hole in the leaf, particularly on the left side.

