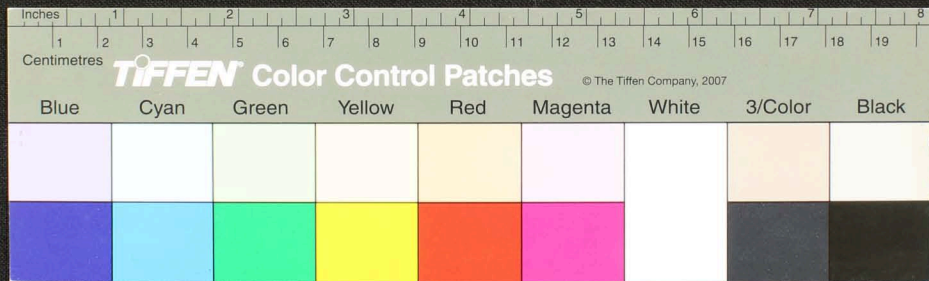
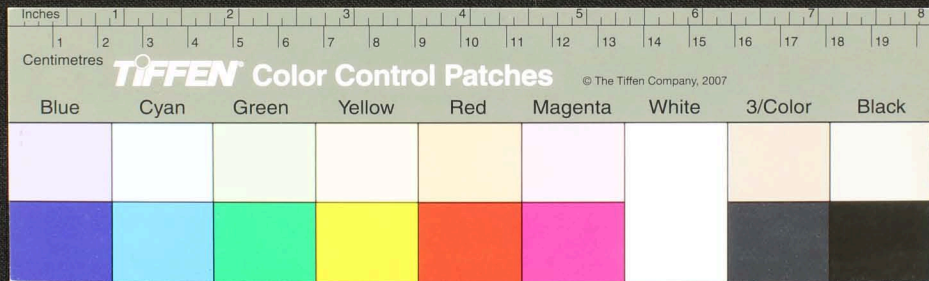


Handwritten Tamil script on a palm leaf manuscript. The text is arranged in approximately 12 horizontal lines across the length of the leaf. Two circular holes are visible, used for threading a cord to bind multiple leaves together. The script is a traditional form of the Tamil language, likely containing a religious or philosophical text.



Handwritten Tamil script on a palm leaf manuscript. The text is densely packed and spans the length of the leaf. Two circular holes are visible, which were traditionally used for threading a cord to bind multiple leaves together into a book format. The script is written in a traditional style, with some characters appearing to be in a different dialect or historical form of Tamil.

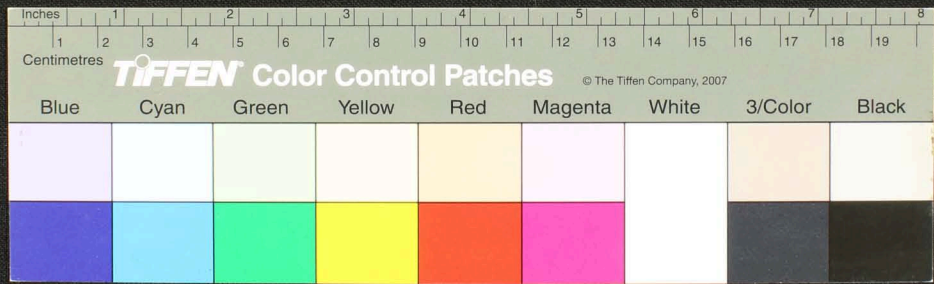






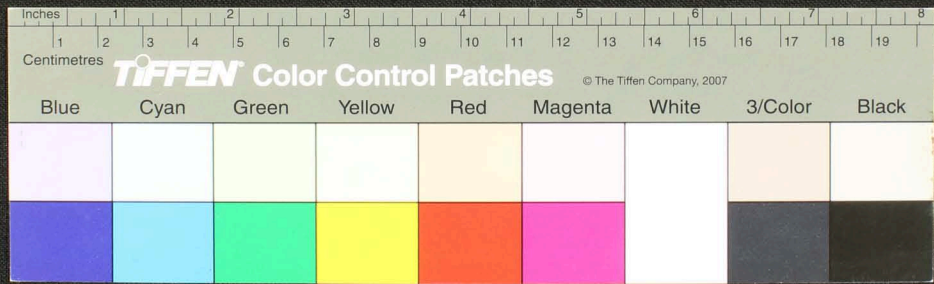


Handwritten Tamil script on a palm leaf manuscript. The text is arranged in approximately 10 horizontal lines across the length of the leaf. Two circular holes are visible, which were traditionally used for threading a cord to bind multiple leaves together into a book format. The script is finely etched into the surface of the dried leaf.

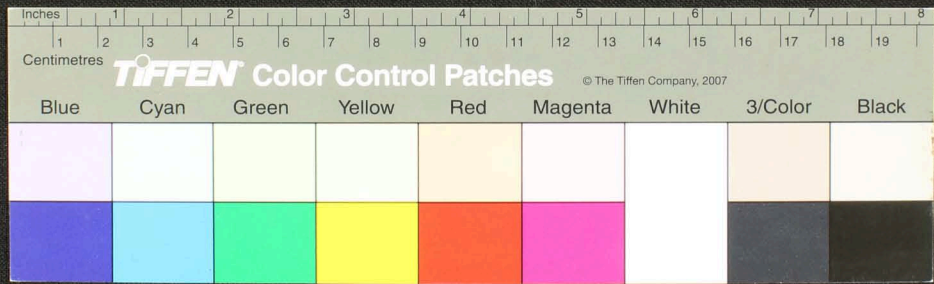




Handwritten Tamil script on a palm leaf manuscript. The text is arranged in approximately 10 horizontal lines across the length of the leaf. The script is finely etched into the surface of the dried leaf. There are two circular holes visible, which were traditionally used for threading a cord to bind multiple leaves together into a book format.

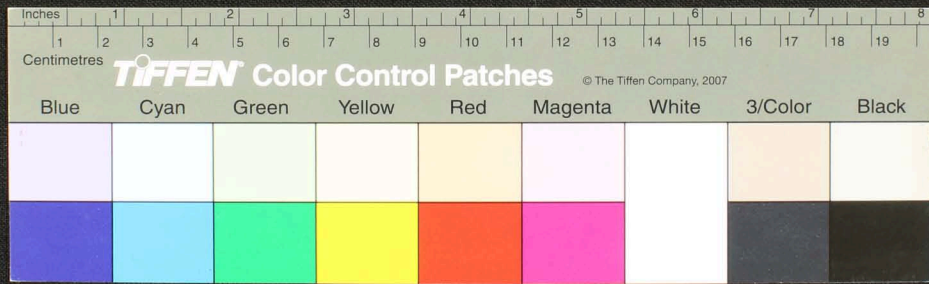


Handwritten Tamil script on a palm leaf manuscript. The text is arranged in approximately 10 horizontal lines across the length of the leaf. The script is dense and appears to be a form of classical or historical Tamil. There are two circular holes visible on the leaf, which were traditionally used for threading a cord to bind multiple leaves together into a book format.

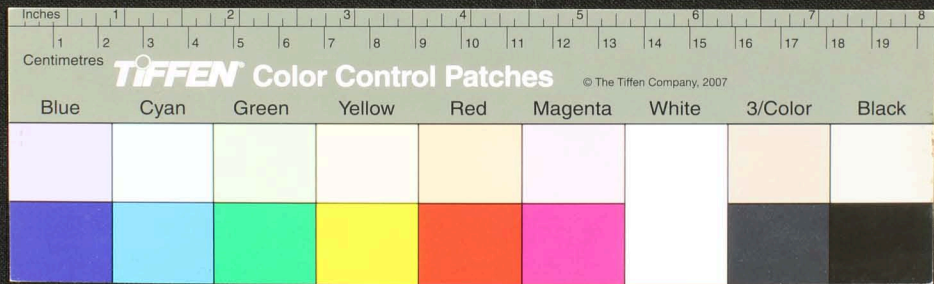




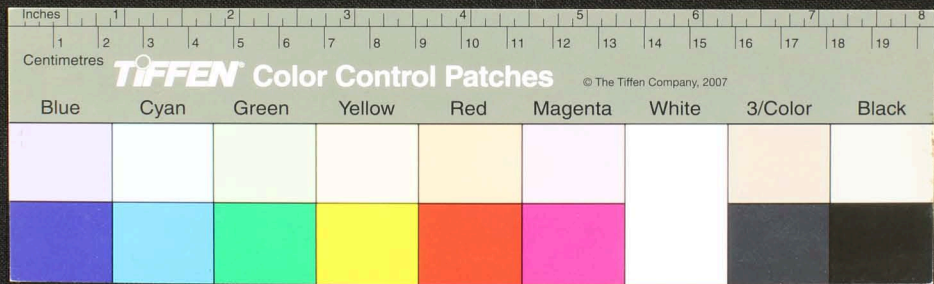
Handwritten Tamil script on a palm leaf manuscript. The text is densely packed and spans the entire length of the leaf. It appears to be a historical record or a religious text, given the context of such artifacts. The script is written in a traditional style, with some characters that are characteristic of older Tamil inscriptions. The leaf shows signs of age, with some darkening and wear, particularly around the two circular holes used for binding.



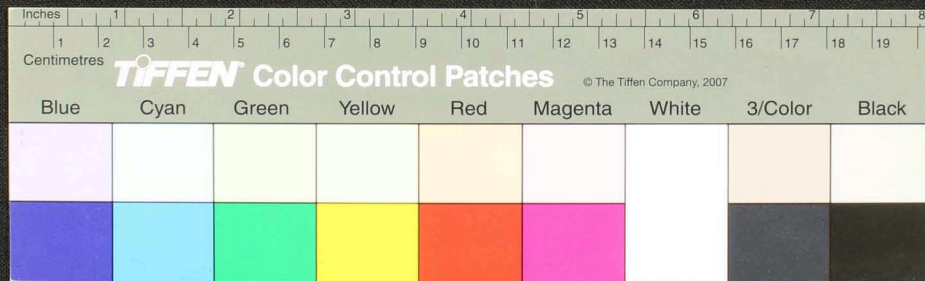
Handwritten Tamil script on a palm leaf manuscript. The text is arranged in approximately 12 horizontal lines across the length of the leaf. The script is densely packed and appears to be a form of classical or historical Tamil. There are two circular holes visible on the leaf, which were traditionally used for threading a cord to bind multiple leaves together into a book format.



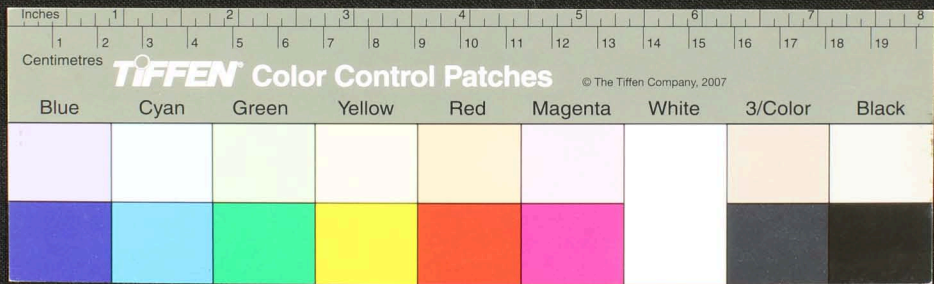
Handwritten Tamil script on a palm leaf manuscript. The text is densely packed and spans the length of the leaf. It appears to be a historical record or a religious text, given the context of such artifacts. The script is written in a traditional style, with some characters that are characteristic of older Tamil inscriptions. The leaf shows signs of age, with some darkening and wear, particularly around the two circular holes used for binding.



Handwritten Tamil script on a palm leaf manuscript. The text is densely packed and spans the length of the leaf. It appears to be a historical record or a religious text, given the context of such artifacts. The script is written in a traditional style, with some characters that are characteristic of older Tamil inscriptions. The leaf shows signs of age, including some dark spots and a slightly uneven texture.

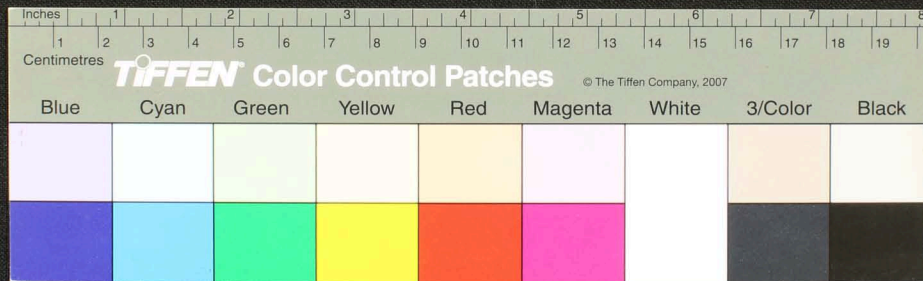


Handwritten Tamil script on a palm leaf manuscript. The text is densely packed and spans the entire length of the leaf. It appears to be a historical record or a religious text, given the context of such artifacts. The script is written in a traditional style, with some characters that are characteristic of older Tamil inscriptions. The leaf shows signs of age, with some darkening and wear, particularly around the two circular holes used for binding.

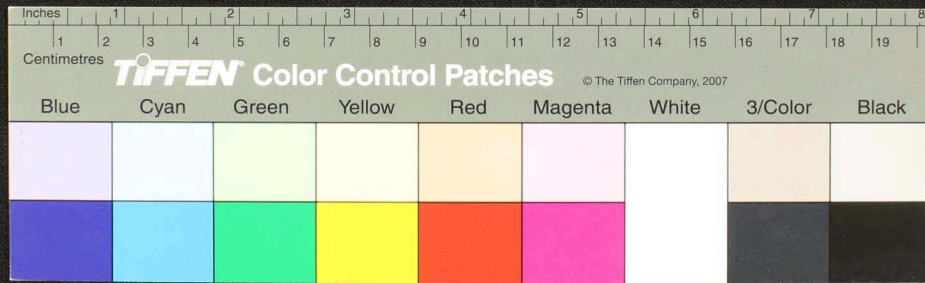




Handwritten Tamil script on a palm leaf manuscript. The text is arranged in approximately 12 horizontal lines across the length of the leaf. Two circular holes are visible, used for threading a cord to bind multiple leaves together. The script is finely etched into the surface of the dried leaf.

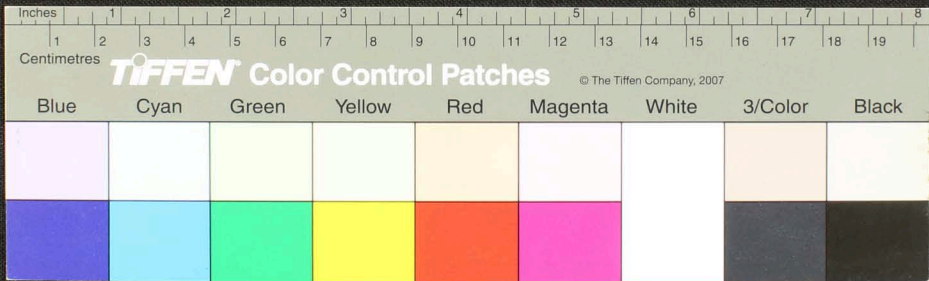


Handwritten Tamil script on a palm leaf manuscript. The text is arranged in approximately 10 horizontal lines across the length of the leaf. Two circular holes are visible, used for threading a cord to bind multiple leaves together. The script is densely packed and appears to be a form of classical Tamil literature or a record.



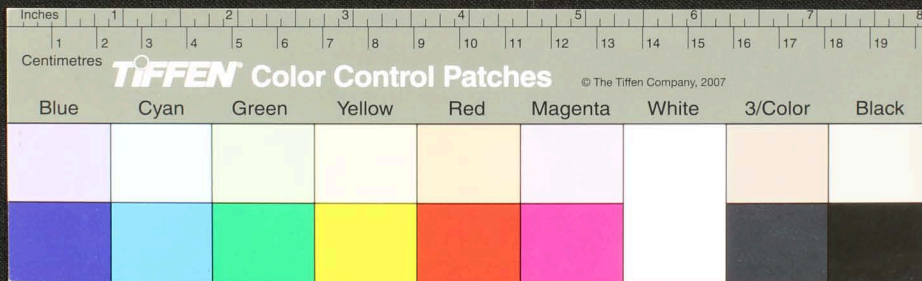


Handwritten Tamil script on a palm leaf manuscript. The text is arranged in approximately 12 horizontal lines across the length of the leaf. Two circular holes are visible, used for binding multiple leaves together. The script is finely etched into the surface of the dried leaf.

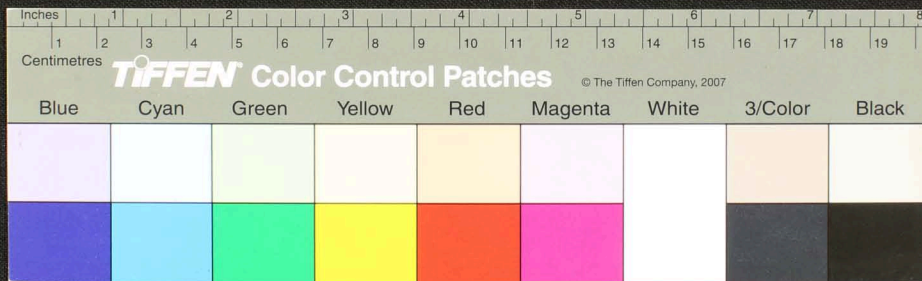




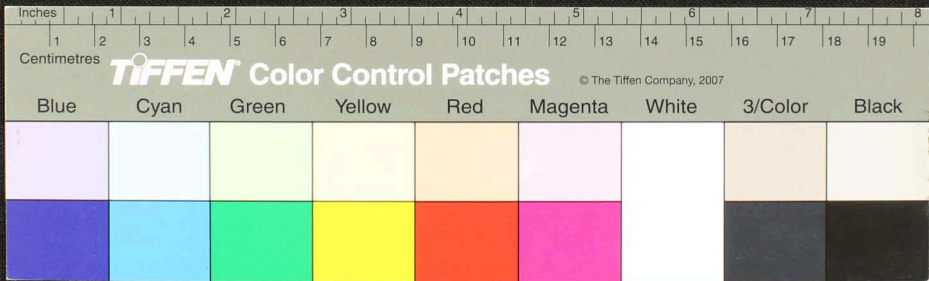
Handwritten text in Tamil script on a palm leaf manuscript. The text is densely packed and spans the length of the leaf. There are two circular holes visible, which were traditionally used for threading a cord to bind multiple leaves together into a book format.



Handwritten Tamil script on a palm leaf manuscript. The text is densely packed and spans the length of the leaf. Two circular holes are visible, used for binding multiple leaves together. The script is written in a traditional style, with some characters appearing to be in a different script or dialect, possibly Grantha or a specific regional variant of Tamil.



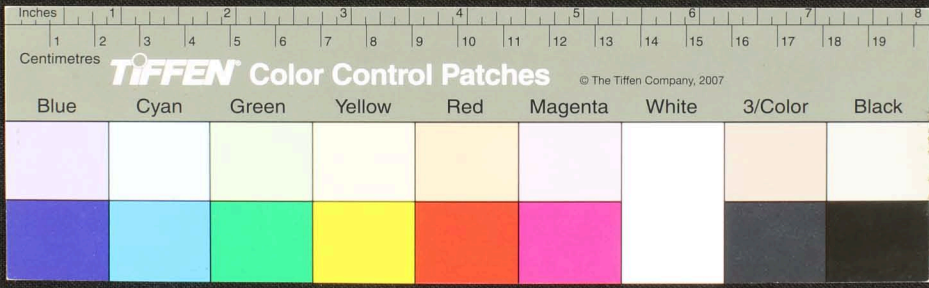
Handwritten Tamil script on a palm leaf manuscript. The text is arranged in approximately 12 horizontal lines across the length of the leaf. There are two circular holes visible, which were traditionally used for threading a cord to bind multiple leaves together into a book format. The script is densely packed and appears to be a form of classical or religious Tamil.



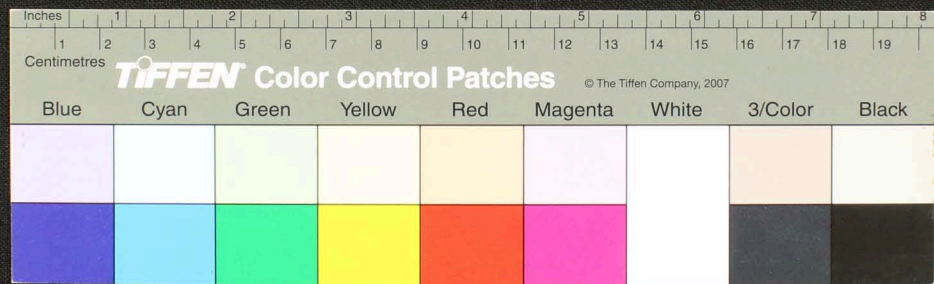




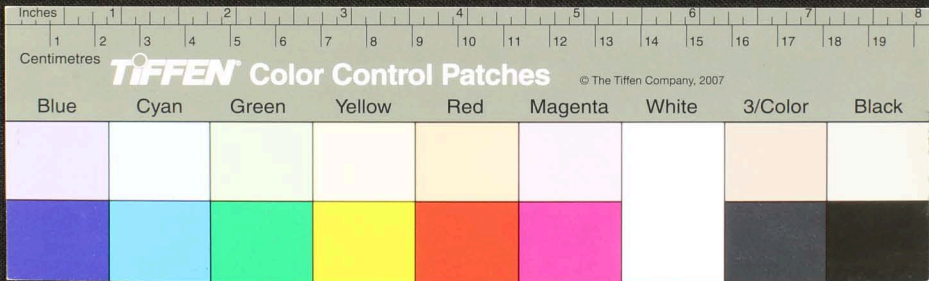
Handwritten Tamil script on a palm leaf manuscript. The text is arranged in approximately 10 horizontal lines across the length of the leaf. There are two circular holes visible, which were traditionally used for threading a cord to bind multiple leaves together into a book format. The script is densely packed and appears to be a form of classical or historical Tamil.



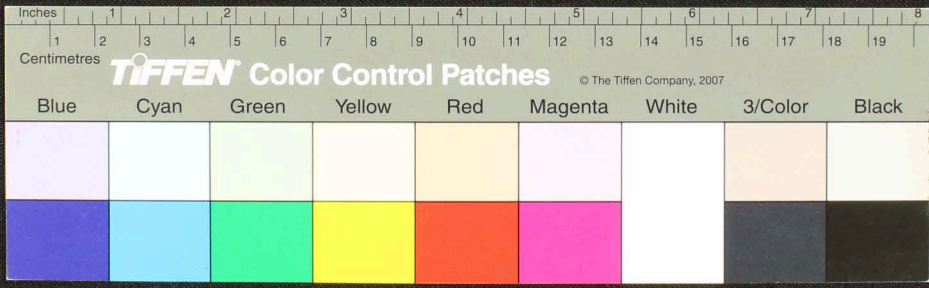
Handwritten Tamil script on a palm leaf manuscript. The text is arranged in approximately 12 horizontal lines across the length of the leaf. There are two circular holes visible, which were traditionally used for threading a cord to bind multiple leaves together into a book format. The script is densely packed and appears to be a form of classical or religious Tamil.



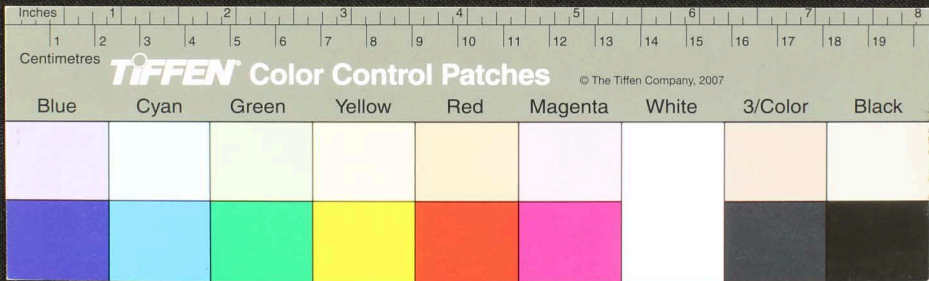
Handwritten Tamil script on a palm leaf manuscript. The text is arranged in approximately 10 horizontal lines across the length of the leaf. Two circular holes are visible, used for threading a cord to bind multiple leaves together. The script is densely packed and appears to be a form of classical or religious Tamil.



Handwritten text in Tamil script on a palm leaf manuscript. The text is densely packed and spans the length of the leaf. There are two circular holes visible, which were traditionally used for threading a cord to bind multiple leaves together into a book format. The script is in an older form of the Tamil language.

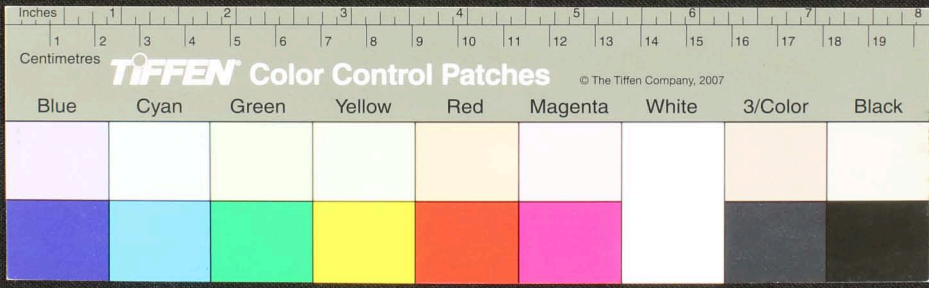


Handwritten Tamil script on a palm leaf manuscript. The text is densely packed and runs horizontally across the length of the leaf. There are two circular holes visible, which were traditionally used for threading a cord to bind multiple leaves together into a book format.



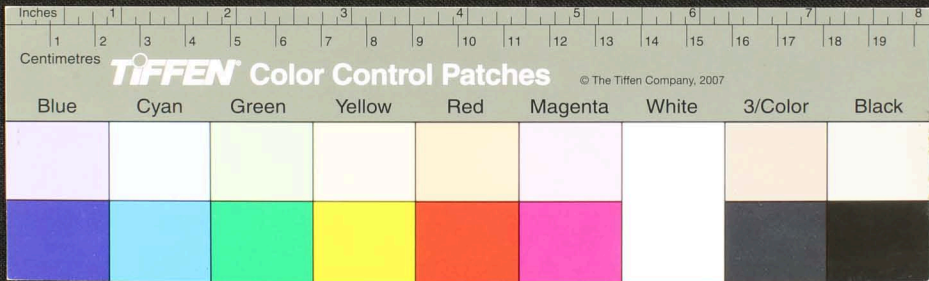


Handwritten Tamil script on a palm leaf manuscript. The text is arranged in approximately 10 horizontal lines across the length of the leaf. The script is dense and characteristic of traditional Tamil inscriptions on palm leaves.

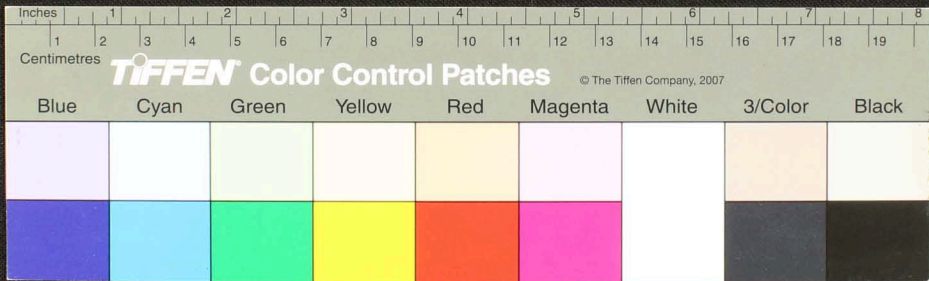




Handwritten Tamil script on a palm leaf manuscript. The text is arranged in approximately 12 horizontal lines across the length of the leaf. The script is finely etched into the surface of the dried leaf. There are two circular holes visible, which were traditionally used for threading a cord to bind multiple leaves together into a book format.

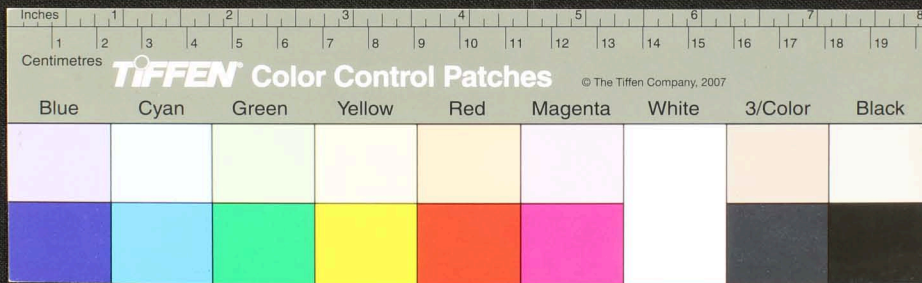


Handwritten Tamil script on a palm leaf manuscript. The text is densely packed and spans the length of the leaf. There are two circular holes visible, which were traditionally used for threading a cord to bind multiple leaves together into a book format. The script is written in a traditional style, with clear characters and some use of diacritics.

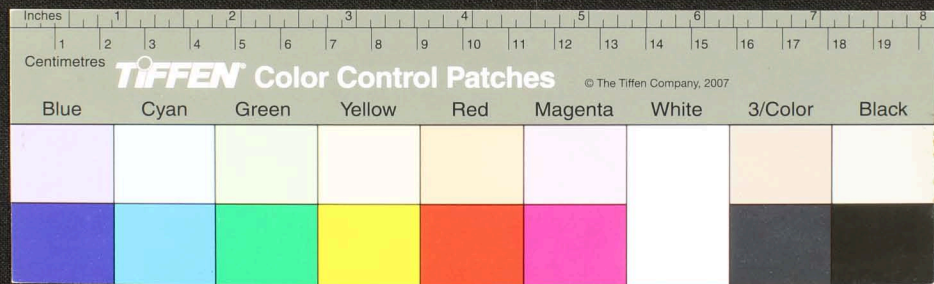




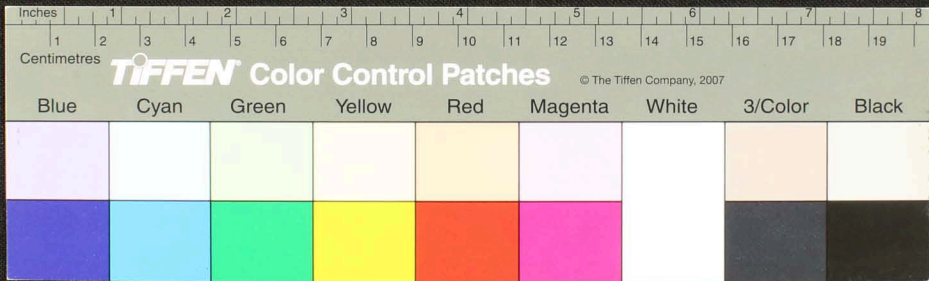
Handwritten Tamil script on a palm leaf manuscript. The text is densely packed and runs horizontally across the length of the leaf. There are two circular holes visible, which were traditionally used for threading a cord to bind multiple leaves together into a book format.



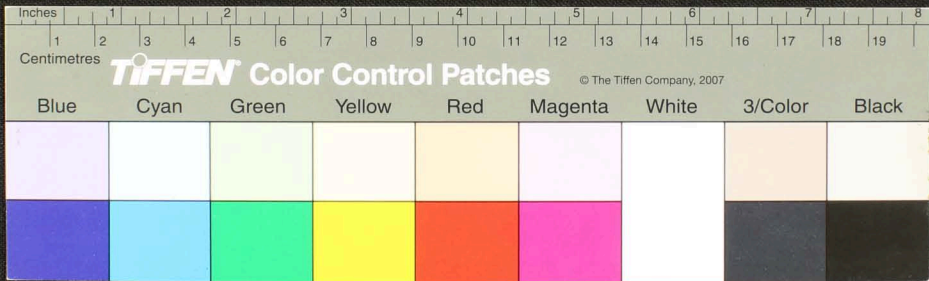
Handwritten Tamil script on a palm leaf manuscript. The text is densely packed and spans the length of the leaf. It appears to be a historical record or a religious text, given the context of such artifacts. The script is written in a traditional style, with clear characters and some decorative elements. The leaf shows signs of age, with some discoloration and wear, particularly around the two circular holes used for binding.



Handwritten Tamil script on a palm leaf manuscript. The text is densely packed in approximately 12 horizontal lines across the length of the leaf. The script is in an older form of the Tamil language. There are two circular holes visible on the leaf, which were traditionally used for threading a cord to bind multiple leaves together into a book format.



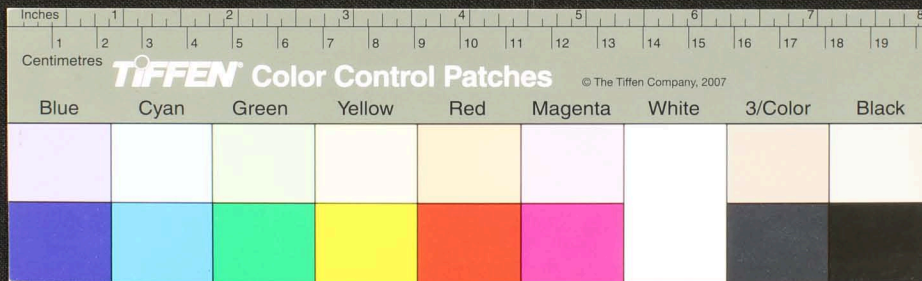
Handwritten Tamil script on a palm leaf manuscript. The text is densely packed and spans the entire length of the leaf. It appears to be a historical record or a religious text, given the context of such artifacts. The script is written in a traditional style, with clear characters and some decorative elements. The leaf is yellowed with age and shows signs of wear, including two circular holes used for binding.



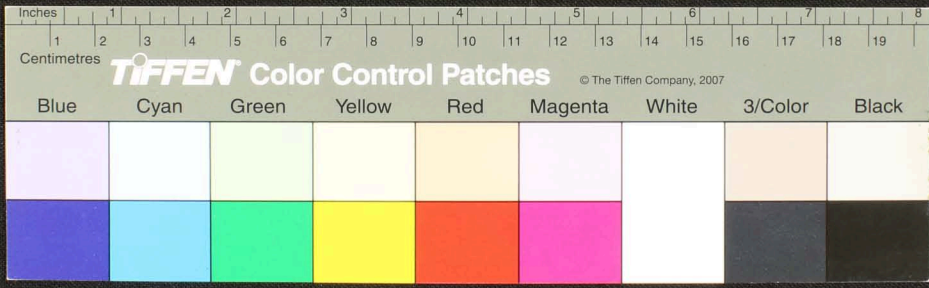




Handwritten Tamil script on a palm leaf manuscript. The text is densely packed and spans the length of the leaf. There are two circular holes visible, which were traditionally used for threading a cord to bind multiple leaves together into a book format. The script is written in a traditional style, with some characters appearing to be in a different dialect or historical form of Tamil.



Handwritten Tamil script on a palm leaf manuscript. The text is densely packed and spans the entire length of the leaf. There are two circular holes visible, which were traditionally used for threading a cord to bind multiple leaves together. The script appears to be a form of classical Tamil, possibly containing religious or philosophical content.

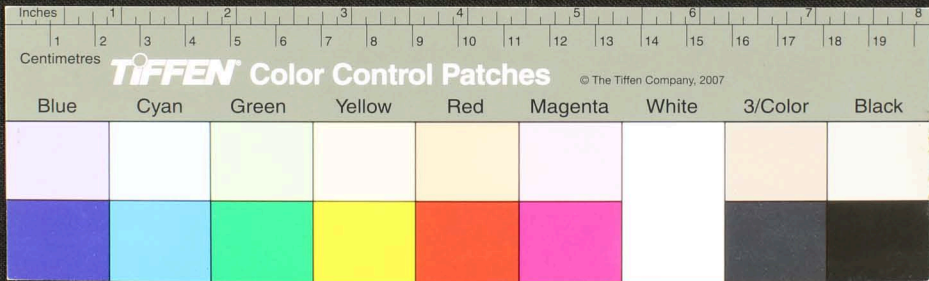




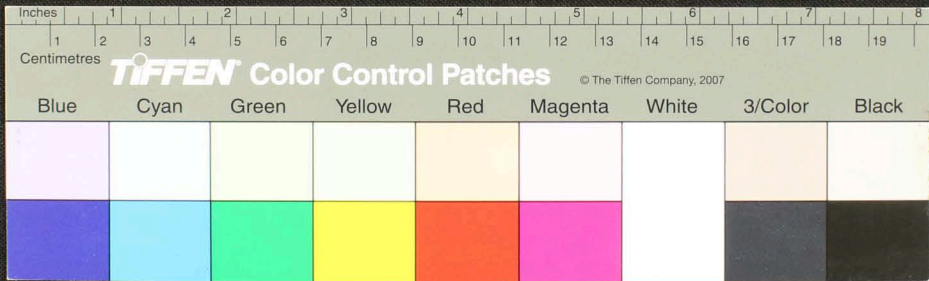




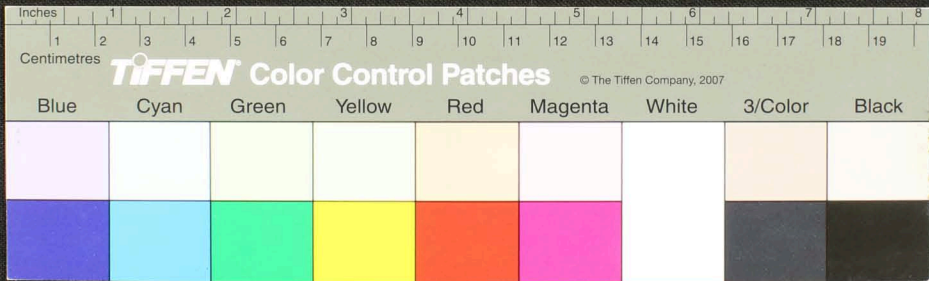
Handwritten Tamil script on a palm leaf manuscript. The text is arranged in approximately 12 horizontal lines across the length of the leaf. The script is a traditional form of the Tamil language, used for recording knowledge, laws, and religious texts. The leaf shows signs of age, including some dark spots and a slightly uneven texture.



Handwritten Tamil script on a palm leaf manuscript. The text is densely packed and spans the entire length of the leaf. It appears to be a historical record or a religious text, given the context of such artifacts. The script is written in a traditional style, with clear characters and some decorative elements. The leaf shows signs of age, with some discoloration and wear at the edges.



Handwritten text in Tamil script on a palm leaf manuscript. The text is densely packed and runs horizontally across the length of the leaf. It appears to be a historical record or a religious text, given the context of such manuscripts. The script is finely etched into the surface of the dried leaf.

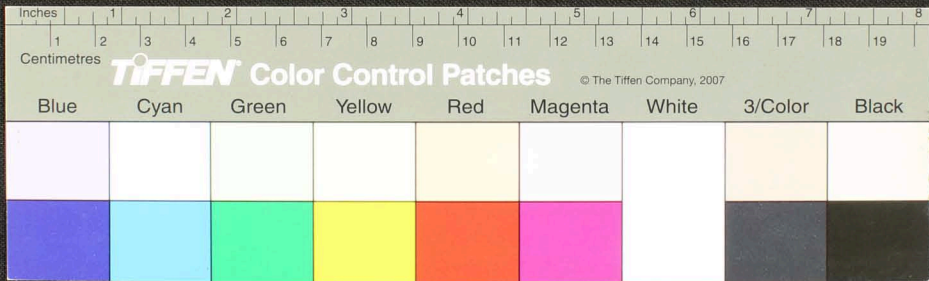






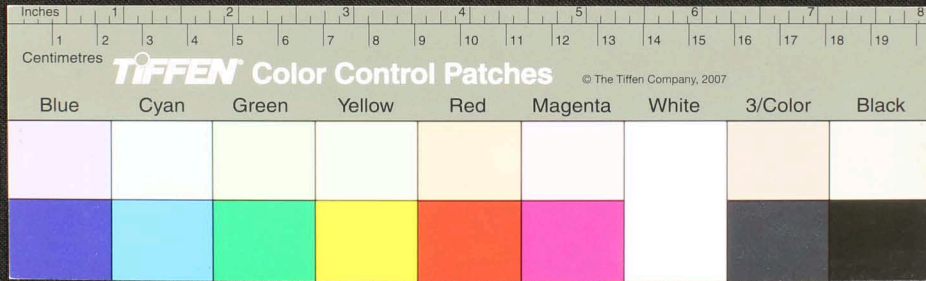


Handwritten Tamil script on a palm leaf manuscript. The text is densely packed and runs horizontally across the length of the leaf. There are two circular holes visible, which were traditionally used for threading a cord to bind multiple leaves together into a book format.

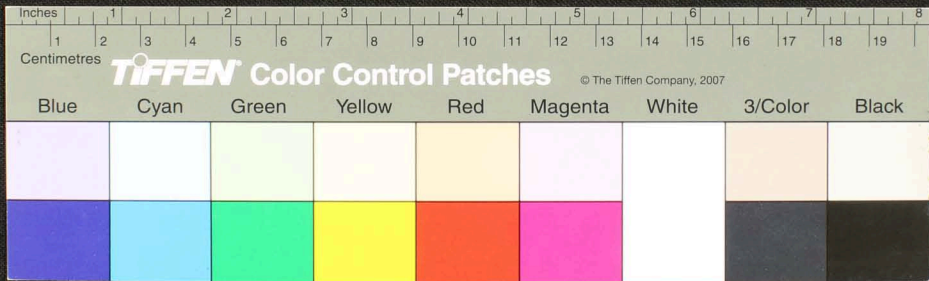


செய்த  
புத்திர  
வந்தி  
கூட

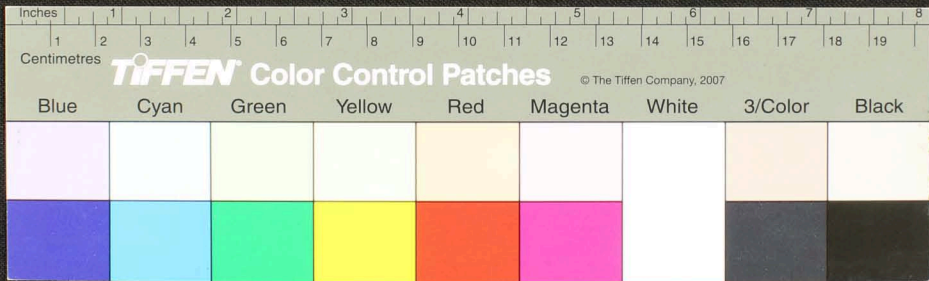
கி.மு. 25-வாறு வகையிலும் உத்தம கட்டுகூட்டா என்ன கருவகக் கொடுக்க மகத்திய தெளிவு தெளிவு நகர வகையிலும் வகையிலும் கட்டுகூட்டா  
கி.மு. 25-வாறு வகையிலும் உத்தம கட்டுகூட்டா என்ன கருவகக் கொடுக்க மகத்திய தெளிவு தெளிவு நகர வகையிலும் வகையிலும் கட்டுகூட்டா  
கி.மு. 25-வாறு வகையிலும் உத்தம கட்டுகூட்டா என்ன கருவகக் கொடுக்க மகத்திய தெளிவு தெளிவு நகர வகையிலும் வகையிலும் கட்டுகூட்டா  
கி.மு. 25-வாறு வகையிலும் உத்தம கட்டுகூட்டா என்ன கருவகக் கொடுக்க மகத்திய தெளிவு தெளிவு நகர வகையிலும் வகையிலும் கட்டுகூட்டா  
கி.மு. 25-வாறு வகையிலும் உத்தம கட்டுகூட்டா என்ன கருவகக் கொடுக்க மகத்திய தெளிவு தெளிவு நகர வகையிலும் வகையிலும் கட்டுகூட்டா



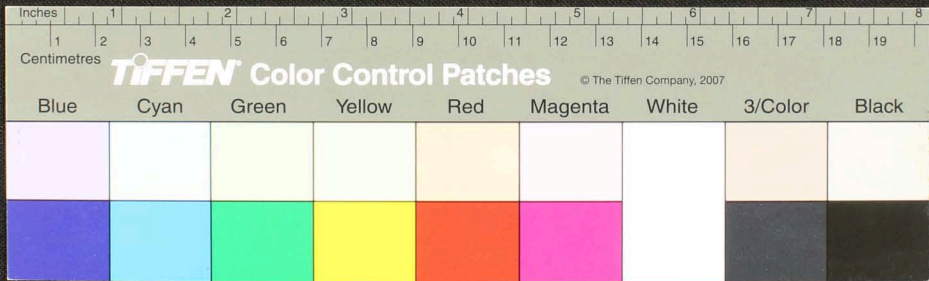
Handwritten Tamil script on a palm leaf manuscript. The text is densely packed and spans the length of the leaf. There are two circular holes visible, which were traditionally used for threading a cord to bind multiple leaves together. The script is written in a traditional style, with some characters appearing to be in a different dialect or historical form of Tamil.



Handwritten Tamil script on a palm leaf manuscript. The text is arranged in approximately 10 horizontal lines across the length of the leaf. The script is densely packed and appears to be a form of classical or historical Tamil. There are two circular holes visible on the leaf, which were traditionally used for threading a cord to bind multiple leaves together into a book format.



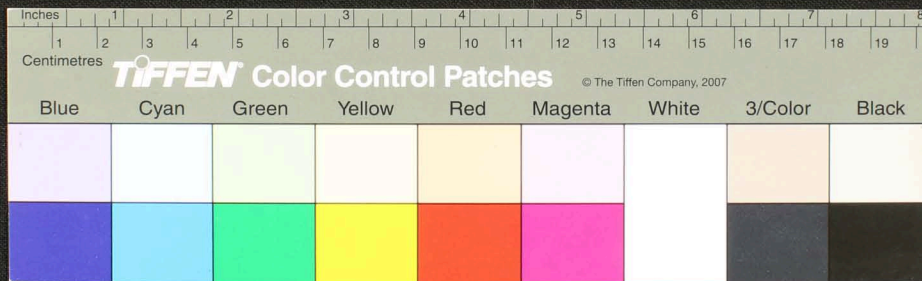
Handwritten Tamil script on a palm leaf manuscript. The text is arranged in approximately 10 horizontal lines across the length of the leaf. Two circular holes are visible, used for binding multiple leaves together. The script is densely packed and appears to be a form of classical or religious Tamil.







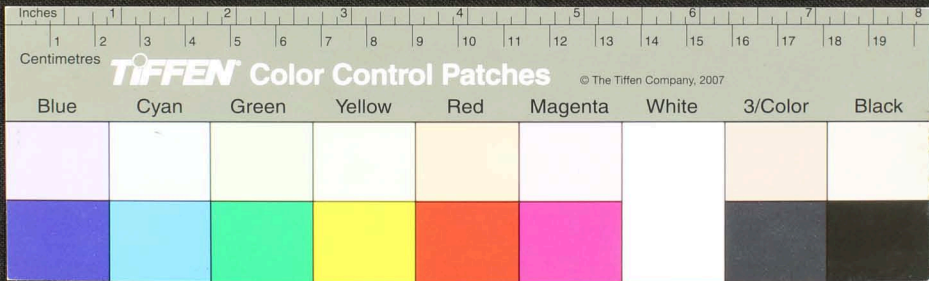
Handwritten Tamil script on a palm leaf manuscript. The text is arranged in approximately 12 horizontal lines across the length of the leaf. Two circular holes are visible, used for binding multiple leaves together. The script is densely packed and appears to be a form of classical or historical Tamil.



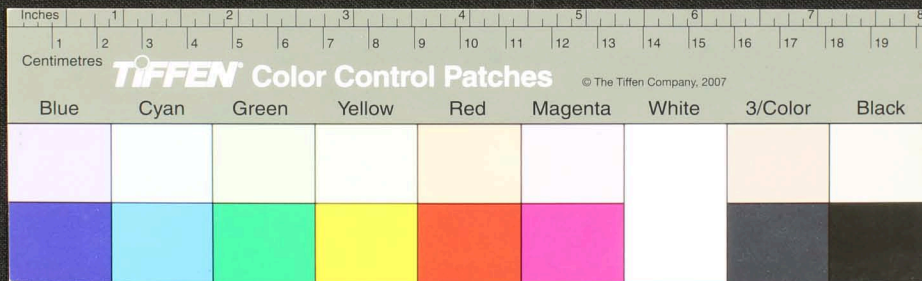




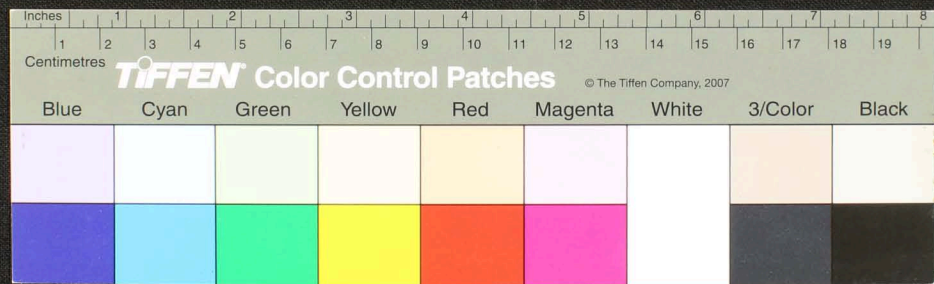
Handwritten Tamil script on a palm leaf manuscript. The text is densely packed and runs horizontally across the length of the leaf. There are two circular holes visible, which were traditionally used for threading a cord to bind multiple leaves together into a book format.



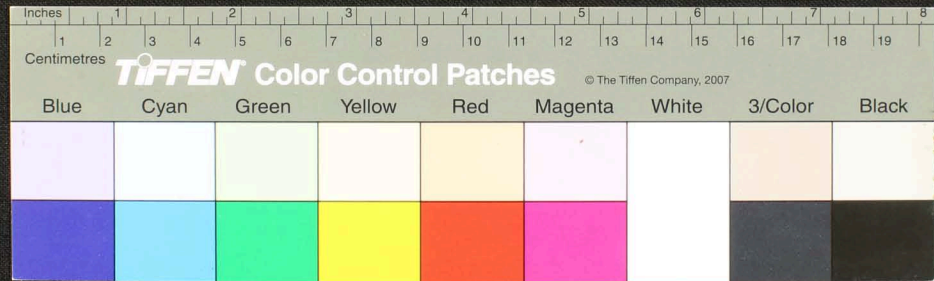
Handwritten Tamil script on a palm leaf manuscript. The text is densely packed and runs horizontally across the length of the leaf. There are two circular holes visible, which were traditionally used for threading a cord to bind multiple leaves together into a book format.



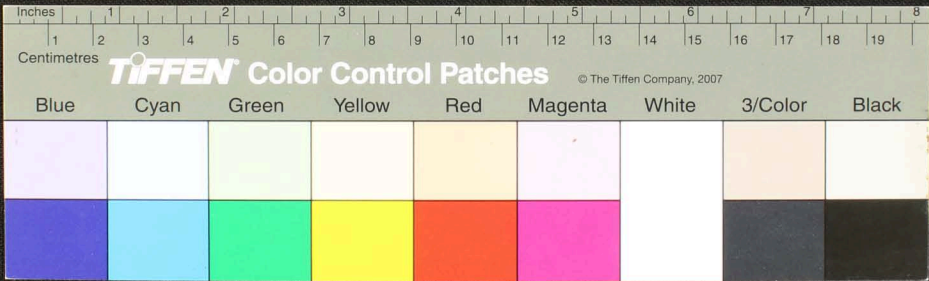
Handwritten text in Tamil script on a palm leaf manuscript. The text is densely packed and spans the entire length of the leaf. It appears to be a historical record or a religious text, given the context of such manuscripts. The script is finely etched into the surface of the dried leaf.



Handwritten Tamil script on a palm leaf manuscript. The text is densely packed and spans the length of the leaf. Two circular holes are visible, used for binding multiple leaves together. The script appears to be a form of classical or historical Tamil, possibly containing religious or philosophical content.



Handwritten Tamil script on a palm leaf manuscript. The text is arranged in approximately 10 horizontal lines across the length of the leaf. The script is densely packed and appears to be a form of classical or historical Tamil. There are two circular holes visible on the leaf, which were traditionally used for threading a cord to bind multiple leaves together into a book format.



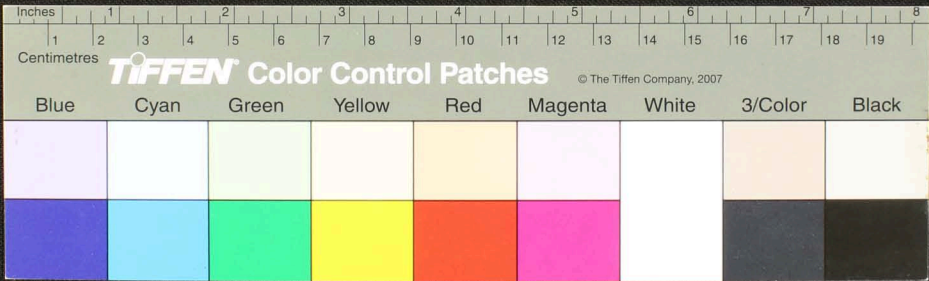


Handwritten Tamil script on a palm leaf manuscript. The text is arranged in a single line across the length of the leaf, with some characters appearing to be in a different script or dialect. The leaf shows signs of age and wear, including two circular holes used for binding.





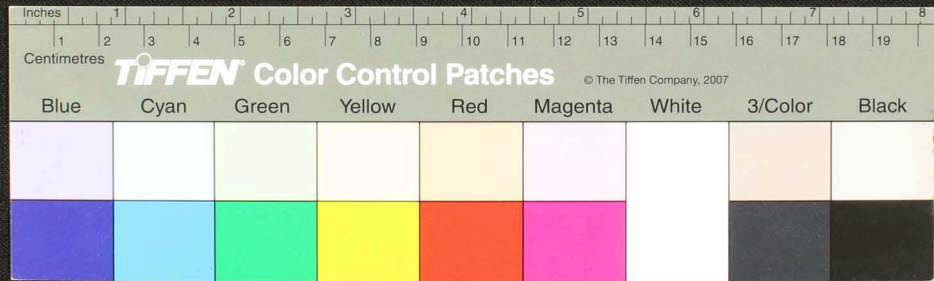
Handwritten Tamil script on a palm leaf manuscript. The text is densely packed and spans the length of the leaf. Two circular holes are visible, used for binding multiple leaves together. The script is written in a traditional style, with some characters appearing to be in a different dialect or historical form of Tamil.



Handwritten Tamil script on a palm leaf manuscript. The text is densely packed and runs horizontally across the length of the leaf. There are two circular holes visible, which were traditionally used for threading a cord to bind multiple leaves together into a book format. The script is in an older form of the Tamil language, likely from the pre-colonial period.



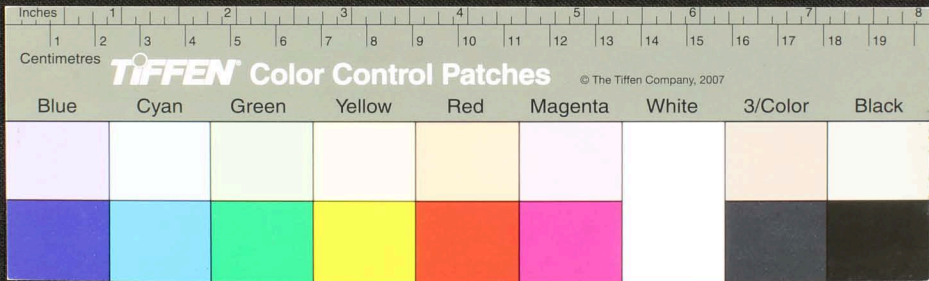
Handwritten Tamil script on a palm leaf manuscript. The text is arranged in approximately 10 horizontal lines across the length of the leaf. Two circular holes are visible, used for threading a cord to bind multiple leaves together. The script is densely packed and appears to be a form of classical or historical Tamil.



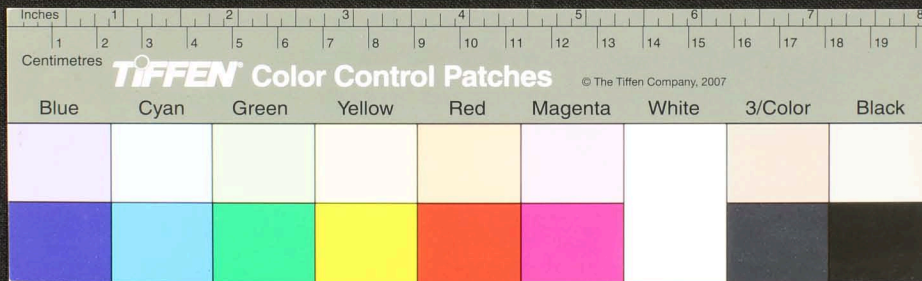
Handwritten Tamil script on a palm leaf manuscript. The text is densely packed and spans the length of the leaf. It appears to be a historical record or a religious text, given the context of such artifacts. The script is written in a traditional style, with some characters that are characteristic of older Tamil inscriptions. There are some dark spots and signs of wear on the leaf, particularly on the left side.



Handwritten Tamil script on a palm leaf manuscript. The text is densely packed and spans the entire length of the leaf. Two circular holes are visible, used for binding multiple leaves together.

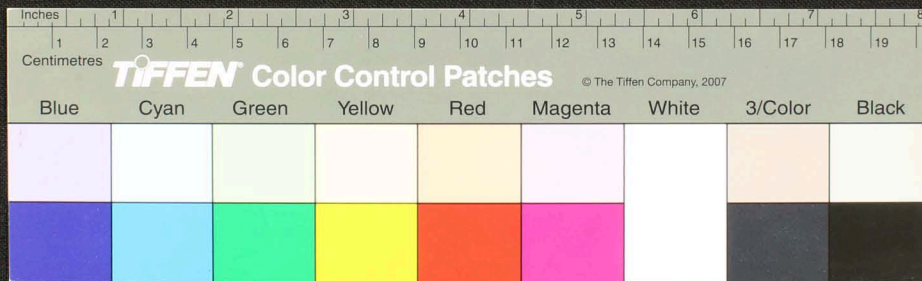


Handwritten Tamil script on a palm leaf manuscript. The text is arranged in approximately 12 horizontal lines across the length of the leaf. Two circular holes are visible, used for threading a cord to bind multiple leaves together. The script is densely packed and appears to be a form of classical or religious Tamil.

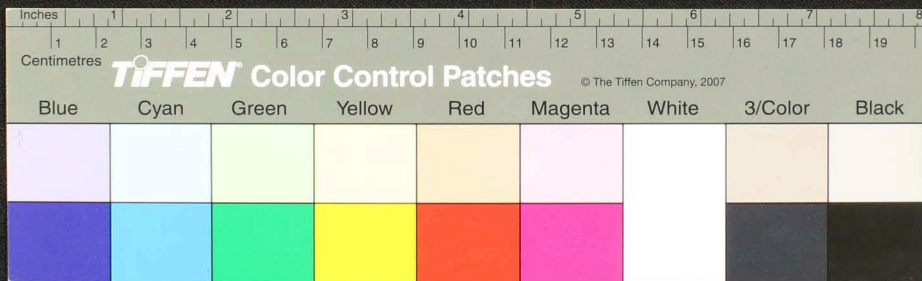




Handwritten text in Tamil script on a palm leaf manuscript. The text is arranged in approximately 10 horizontal lines across the length of the leaf. Two circular holes are visible, used for threading a cord to bind multiple leaves together. The script is finely etched into the surface of the dried leaf.

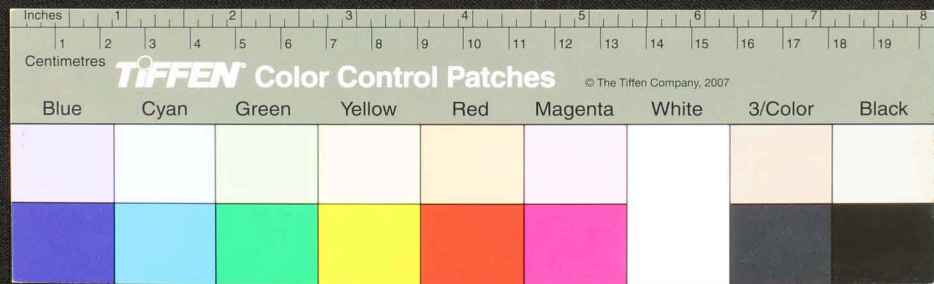


Handwritten Tamil script on a palm leaf manuscript. The text is arranged in approximately 12 horizontal lines across the length of the leaf. Two circular holes are visible, which were traditionally used for threading a cord to bind multiple leaves together into a book format. The script is finely etched into the surface of the dried leaf.



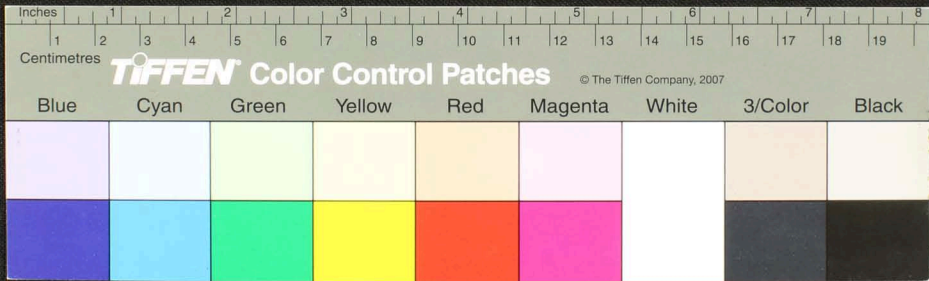


Handwritten Tamil script on a palm leaf manuscript. The text is arranged in approximately 15 horizontal lines across the length of the leaf. Two circular holes are visible, used for threading a cord to bind multiple leaves together. The script is densely packed and appears to be a form of classical or historical Tamil.





Handwritten Tamil script on a palm leaf manuscript. The text is arranged in approximately 10 horizontal lines across the length of the leaf. Two circular holes are visible, used for threading a cord to bind multiple leaves together. The script is finely etched into the surface of the dried leaf.







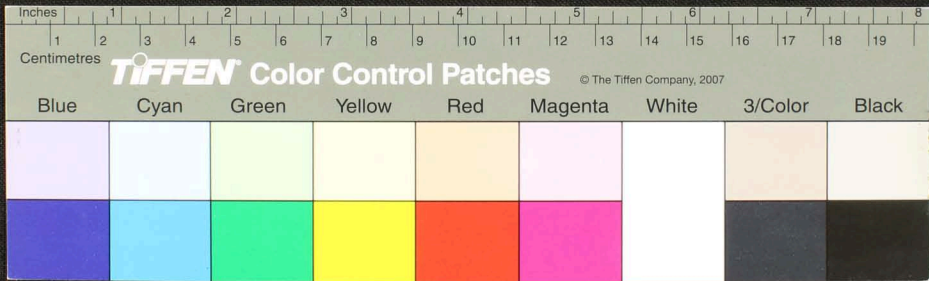






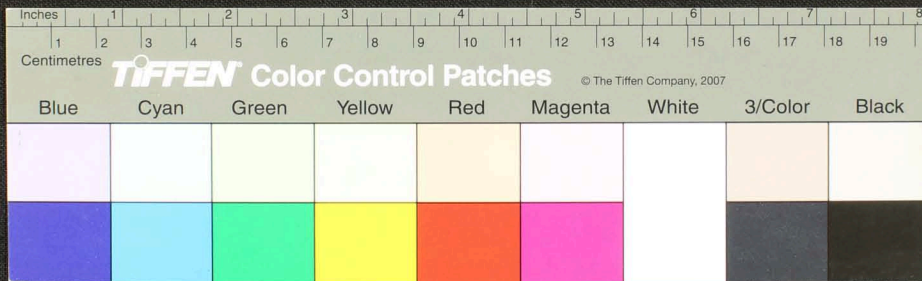


Handwritten Tamil script on a palm leaf manuscript. The text is arranged in approximately 10 horizontal lines across the length of the leaf. The script is finely etched into the surface of the dried leaf. There are two circular holes visible, which were traditionally used for threading a cord to bind multiple leaves together into a book format. The leaf shows signs of age, including some darkening and wear, particularly at the ends.

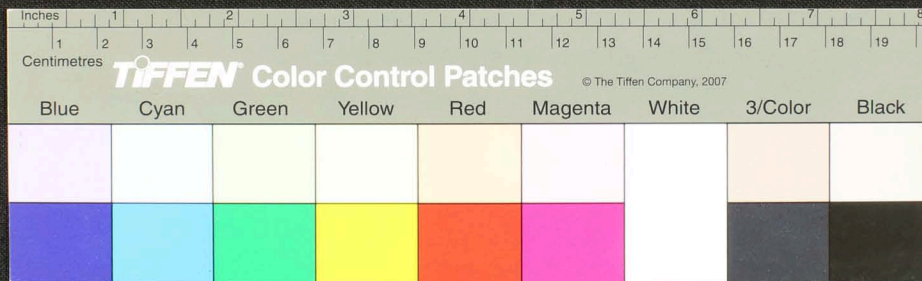




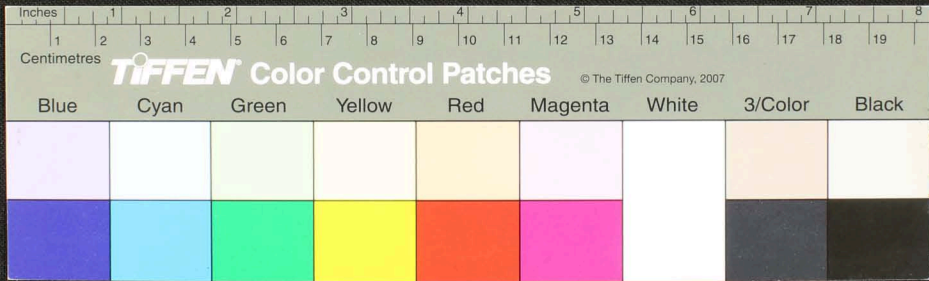
Handwritten Tamil script on a palm leaf manuscript. The text is arranged in approximately 12 horizontal lines across the length of the leaf. Two circular holes are visible, used for threading a cord to bind multiple leaves together. The script is finely etched into the surface of the dried leaf.



Handwritten Tamil script on a palm leaf manuscript. The text is arranged in approximately 12 horizontal lines across the length of the leaf. Two circular holes are visible, used for threading a cord to bind multiple leaves together. The script is finely etched into the surface of the dried leaf.

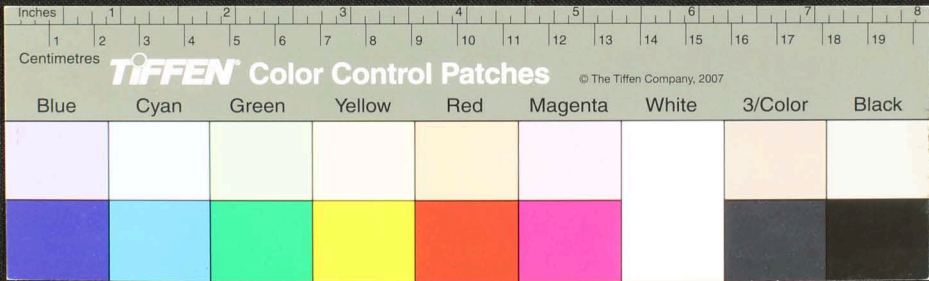


Handwritten Tamil script on a palm leaf manuscript. The text is arranged in approximately 12 horizontal lines across the length of the leaf. Two circular holes are visible, used for threading a cord to bind multiple leaves together. The script is a traditional form of the Tamil language, likely containing a religious or philosophical text.

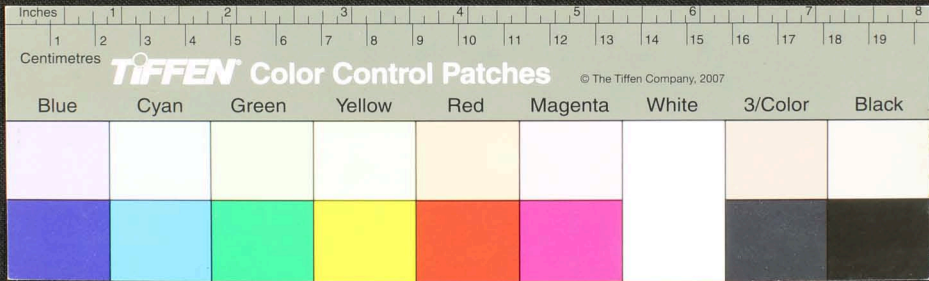




Handwritten Tamil script on a palm leaf manuscript. The text is densely packed in approximately 15 horizontal lines across the length of the leaf. Two circular holes are visible, used for threading a cord to bind multiple leaves together. The script is written in a traditional style with dark ink on the natural yellowish-brown surface of the leaf.



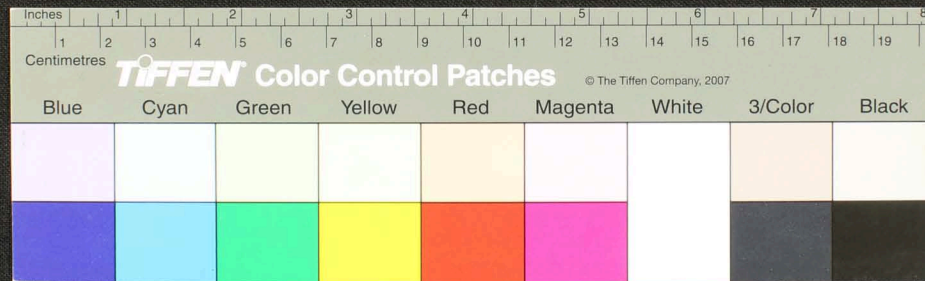
Handwritten text in Tamil script on a palm leaf manuscript. The text is densely packed and spans the length of the leaf. Two circular holes are visible, used for binding multiple leaves together.





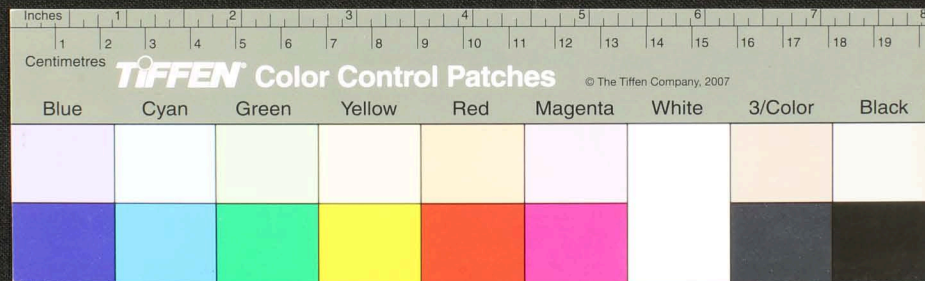


Handwritten Tamil script on a palm leaf manuscript. The text is arranged in approximately 12 horizontal lines across the length of the leaf. Two circular holes are visible, used for threading a cord to bind multiple leaves together. The script is a traditional form of the Tamil language, likely containing a religious or philosophical text.

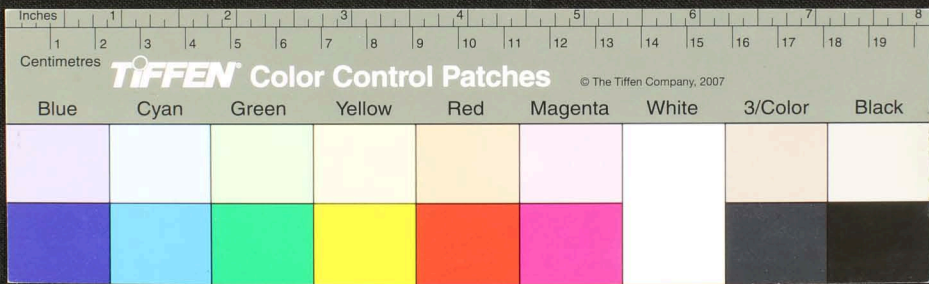




Handwritten text in Tamil script on a palm leaf manuscript. The text is arranged in approximately 15 horizontal lines across the length of the leaf. Two circular holes are visible, used for binding multiple leaves together. The script is finely etched into the surface of the dried leaf.

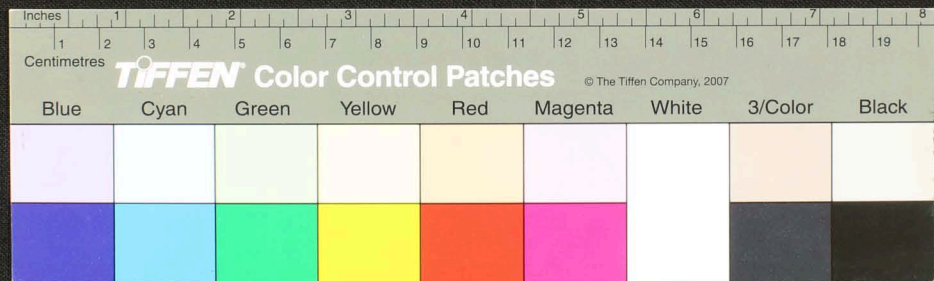


Handwritten Tamil script on a palm leaf manuscript. The text is densely packed and runs horizontally across the length of the leaf. Two circular holes are visible, used for binding multiple leaves together.

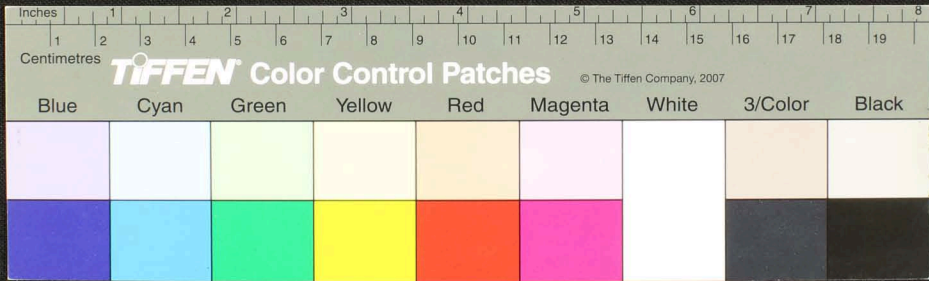




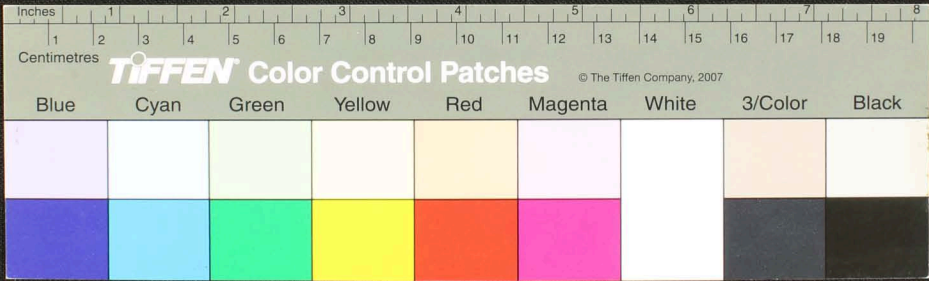
Handwritten text in Tamil script on a palm leaf manuscript. The text is densely packed and runs horizontally across the length of the leaf. There are two circular holes visible, which were traditionally used for threading a cord to bind multiple leaves together into a book format. The script is in an older form of the Tamil language, likely from the pre-colonial period.



Handwritten Tamil script on a palm leaf manuscript. The text is arranged in approximately 10 horizontal lines across the length of the leaf. Two circular holes are visible, used for threading a cord to bind multiple leaves together. The script is densely packed and appears to be a form of classical or religious Tamil.

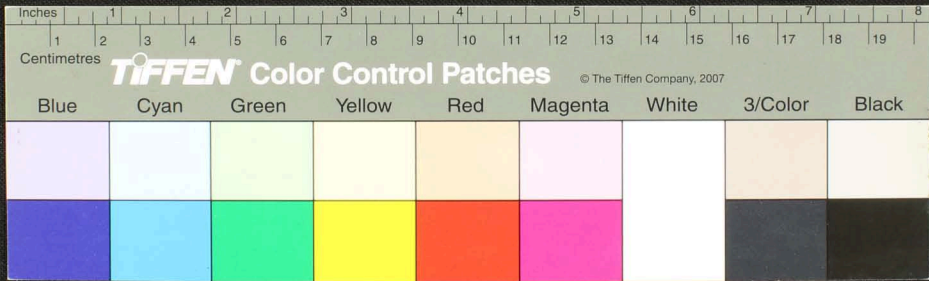


Handwritten Tamil script on a palm leaf manuscript. The text is arranged in approximately 12 horizontal lines across the length of the leaf. Two circular holes are visible, used for binding multiple leaves together. The script is densely packed and appears to be a form of classical or historical Tamil.



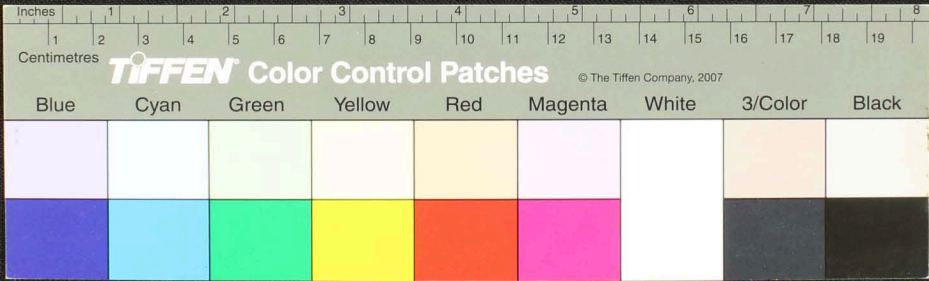


Handwritten Tamil script on a palm leaf manuscript. The text is densely packed in approximately 10 horizontal lines across the length of the leaf. Two circular holes are visible, used for threading a cord to bind multiple leaves together. The script is in an older form of the Tamil language.

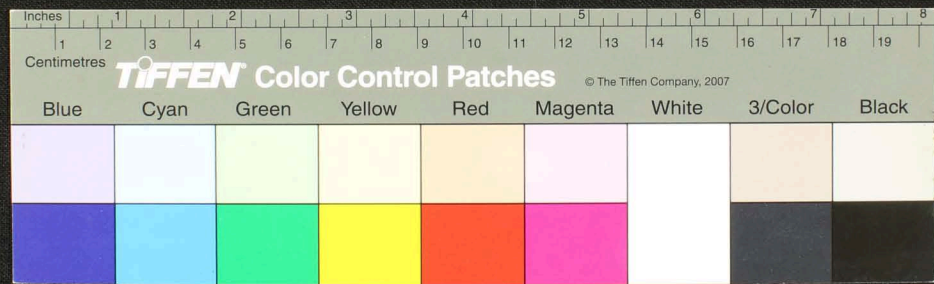




Handwritten Tamil script on a palm leaf manuscript. The text is densely packed in approximately 10 horizontal lines across the length of the leaf. Two circular holes are visible, used for threading a cord to bind multiple leaves together. The script is in an older form of the Tamil language.



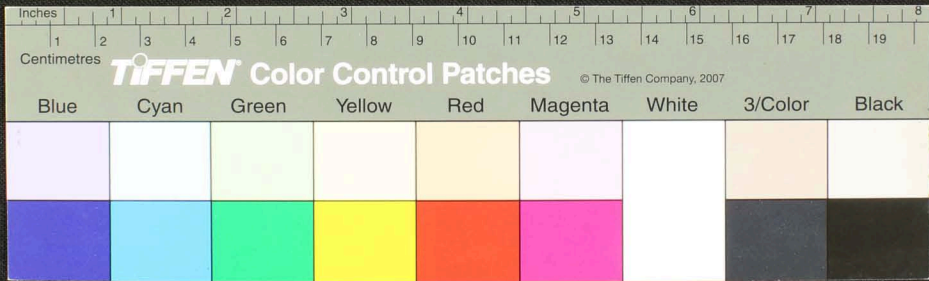
Handwritten Tamil script on a palm leaf manuscript. The text is densely packed and runs horizontally across the length of the leaf. Two circular holes are visible, which were traditionally used for threading a cord to bind multiple leaves together into a book format.



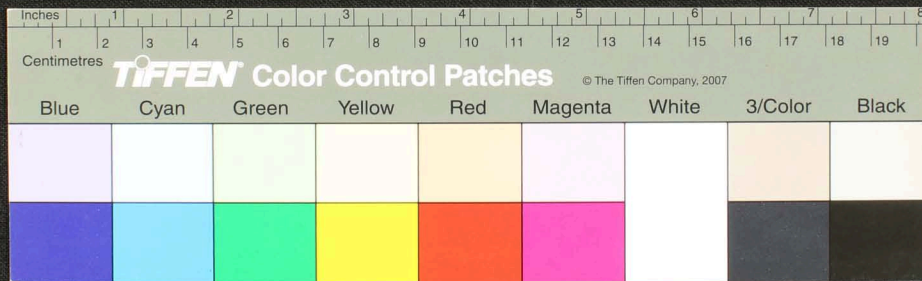




Handwritten Tamil script on a palm leaf manuscript. The text is arranged in approximately 12 horizontal lines across the length of the leaf. Two circular holes are visible, used for threading a cord to bind multiple leaves together. The script is finely etched into the surface of the dried leaf.



Handwritten text in Tamil script on a palm leaf manuscript. The text is arranged in approximately 12 horizontal lines across the length of the leaf. Two circular holes are visible, used for threading a cord to bind multiple leaves together. The script is finely etched into the surface of the dried leaf.

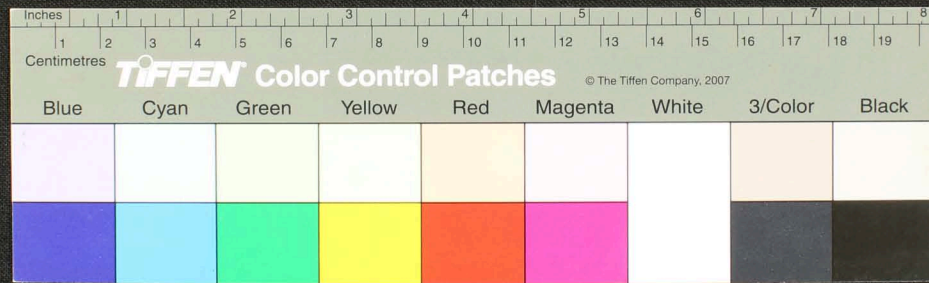








Handwritten text in Tamil script on a palm leaf manuscript. The text is arranged in approximately 15 horizontal lines across the length of the leaf. Two circular holes are visible, which were traditionally used for threading a cord to bind multiple leaves together into a book format. The script is finely etched into the surface of the dried leaf.









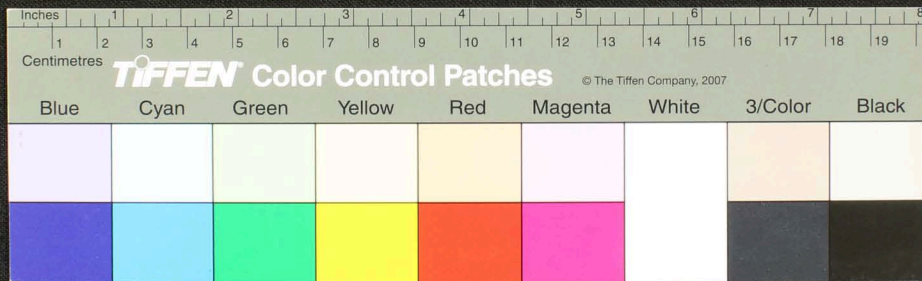
Handwritten text in Tamil script on a palm leaf manuscript. The text is arranged in approximately 10 horizontal lines across the length of the leaf. Two circular holes are visible, used for binding multiple leaves together. The script is finely etched into the surface of the dried leaf.



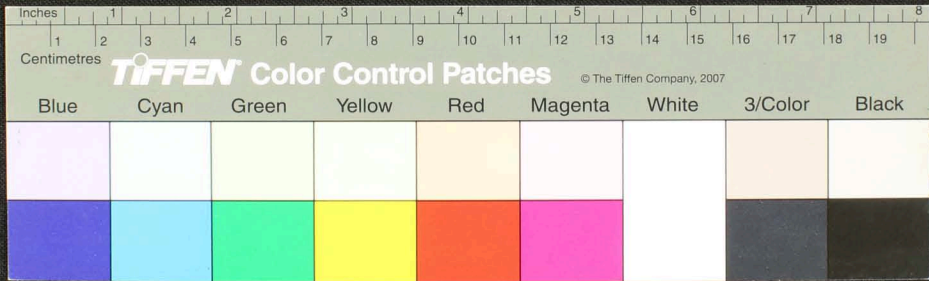




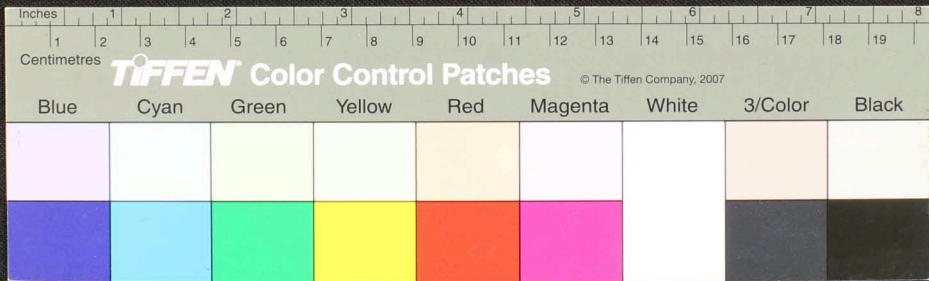
Handwritten text in Tamil script on a palm leaf manuscript. The text is arranged in approximately 10 horizontal lines across the length of the leaf. Two circular holes are visible, used for threading a cord to bind multiple leaves together. The script is finely etched into the surface of the dried leaf.



Handwritten Tamil script on a palm leaf manuscript. The text is arranged in approximately 12 horizontal lines across the length of the leaf. Two circular holes are visible, used for threading a cord to bind multiple leaves together. The script is finely etched into the surface of the dried leaf.



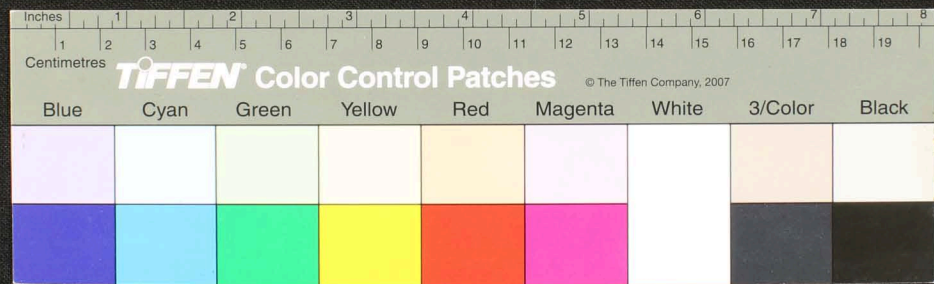
Handwritten Tamil script on a palm leaf manuscript. The text is arranged in approximately 12 horizontal lines across the length of the leaf. Two circular holes are visible, which were traditionally used for threading a cord to bind multiple leaves together into a book format. The script is finely etched into the surface of the dried leaf.





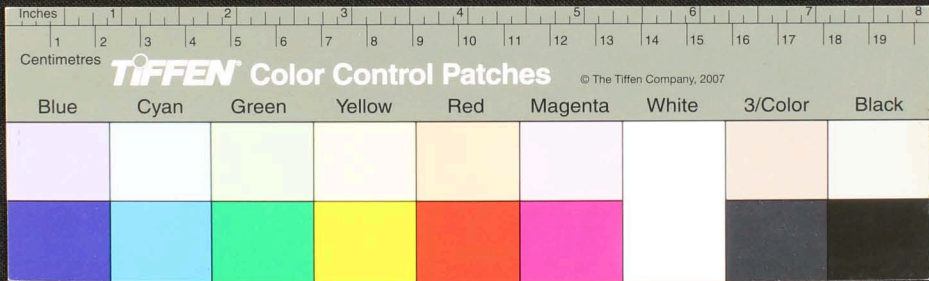


Handwritten Tamil script on a palm leaf manuscript. The text is arranged in approximately 12 horizontal lines across the length of the leaf. Two circular holes are visible, used for threading a cord to bind multiple leaves together. On the left side, there is a small vertical inscription: 'புத்தரின்' (Buddharin) and 'சுருதி' (Srutir). At the bottom left, the number '9001' is written.

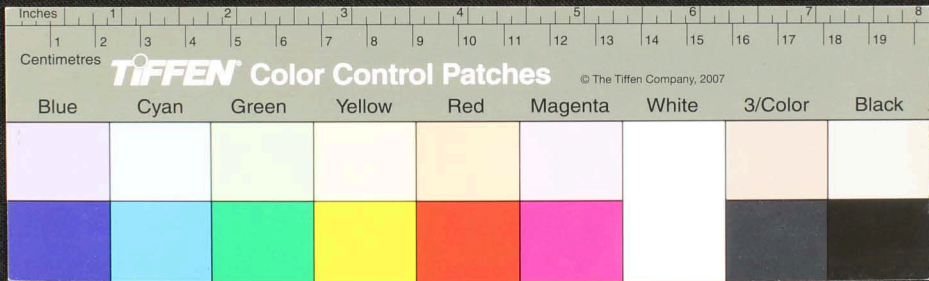




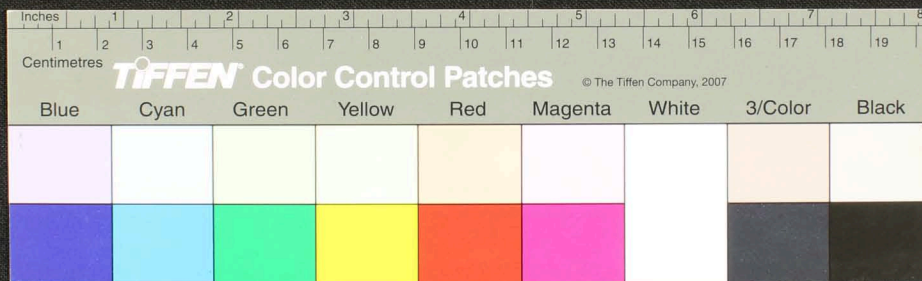
Handwritten Tamil script on a palm leaf manuscript. The text is densely packed and spans the length of the leaf. Two circular holes are visible, used for binding multiple leaves together. The script is written in a traditional style, with some characters appearing to be in a different script or dialect, possibly Grantha or a specific regional variant of Tamil.



Handwritten Tamil script on a palm leaf manuscript. The text is arranged in approximately 12 horizontal lines across the length of the leaf. Two circular holes are visible, used for threading a cord to bind multiple leaves together. The script is a traditional form of the Tamil language.



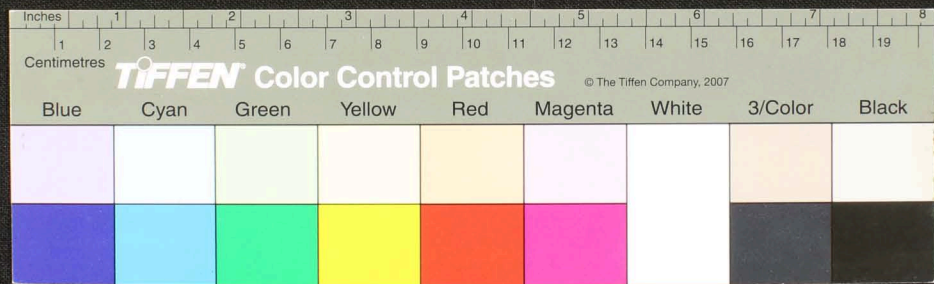
Handwritten Tamil script on a palm leaf manuscript. The text is arranged in approximately 10 horizontal lines across the length of the leaf. Two circular holes are visible, used for threading a cord to bind multiple leaves together. The script is finely etched into the surface of the dried leaf.







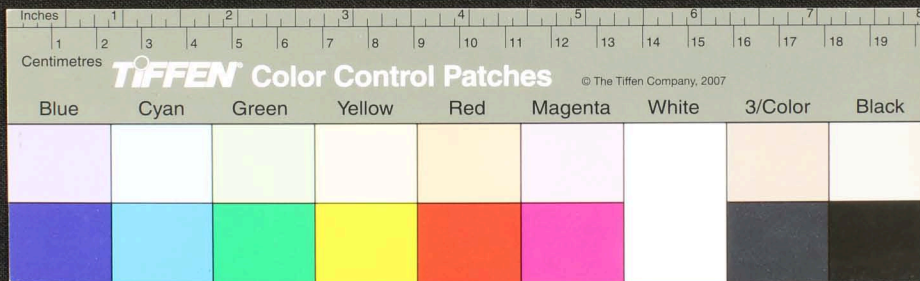
Handwritten Tamil script on a palm leaf manuscript. The text is arranged in approximately 10 horizontal lines across the length of the leaf. The script is densely packed and appears to be a form of classical or historical Tamil. There are two circular holes visible on the leaf, which were traditionally used for threading a cord to bind multiple leaves together into a book format.





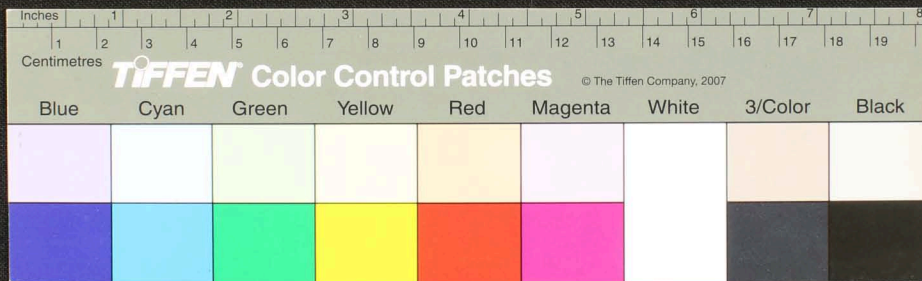


Handwritten Tamil script on a palm leaf manuscript. The text is arranged in approximately 12 horizontal lines across the length of the leaf. Two circular holes are visible, used for threading a cord to bind multiple leaves together. The script is finely etched into the surface of the dried leaf.

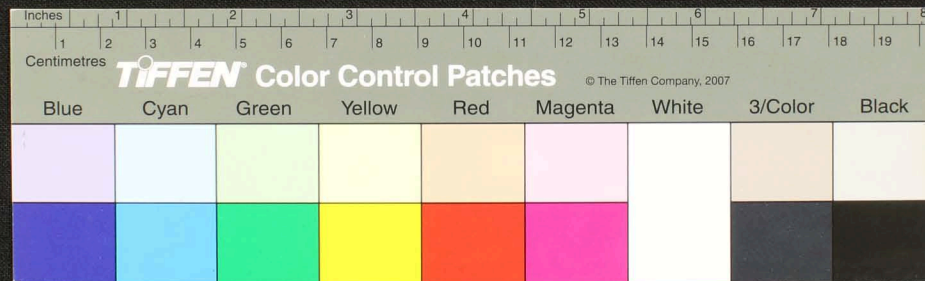




Handwritten Tamil script on a palm leaf manuscript. The text is arranged in approximately 12 horizontal lines across the length of the leaf. Two circular holes are visible, used for threading a cord to bind multiple leaves together. The script is a traditional form of the Tamil language, likely containing a religious or philosophical text.



Handwritten Tamil script on a palm leaf manuscript. The text is arranged in approximately 12 horizontal lines across the length of the leaf. Two circular holes are visible, used for threading a cord to bind multiple leaves together. The script is densely packed and appears to be a form of classical or historical Tamil.



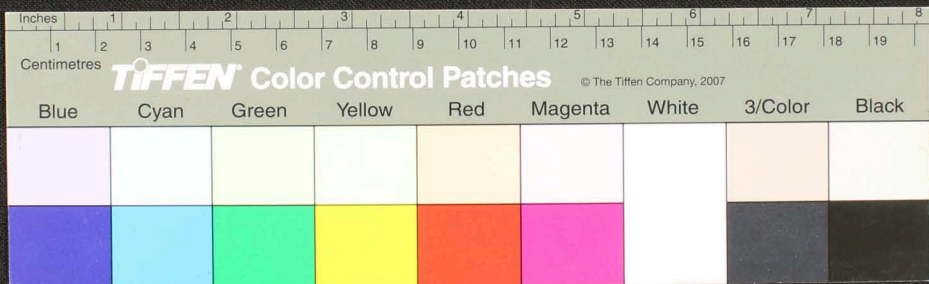




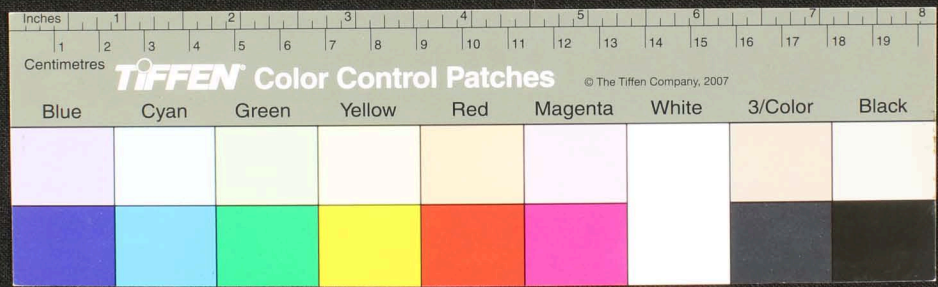




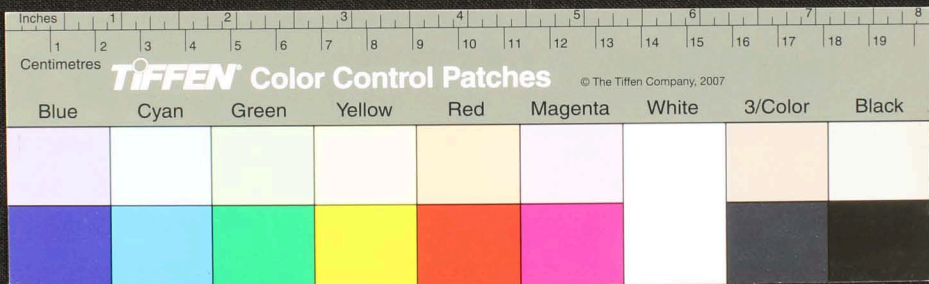
Handwritten Tamil script on a palm leaf manuscript. The text is arranged in approximately 12 horizontal lines across the length of the leaf. Two circular holes are visible, used for threading a cord to bind multiple leaves together. On the left side, there is a small vertical inscription: 'செவ்வாய்' (Sevvaay) and '907'.



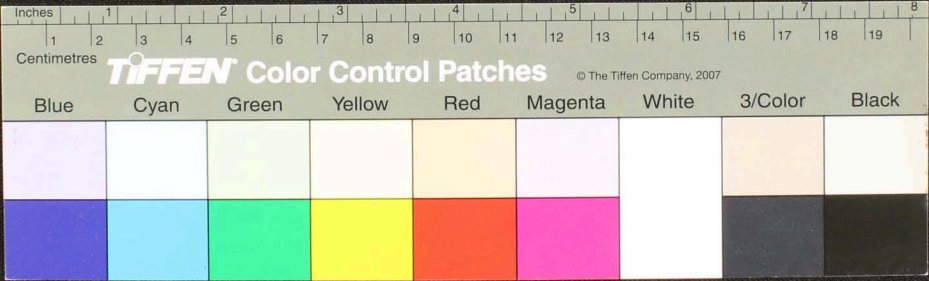
Handwritten Tamil script on a palm leaf manuscript. The text is arranged in approximately 12 horizontal lines across the length of the leaf. Two circular holes are visible, used for binding multiple leaves together. The script is finely etched into the natural texture of the dried leaf.



Handwritten Tamil script on a palm leaf manuscript. The text is arranged in approximately 12 horizontal lines across the length of the leaf. There are two circular holes, one on the left and one on the right, which were traditionally used for threading a cord to bind multiple leaves together into a book format. The script is densely packed and appears to be a form of classical or historical Tamil.

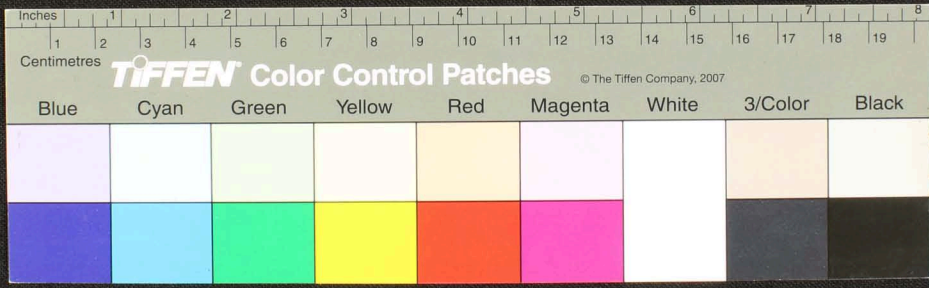


Handwritten Tamil script on a palm leaf manuscript. The text is densely packed and spans the length of the leaf. Two circular holes are visible, used for binding multiple leaves together.



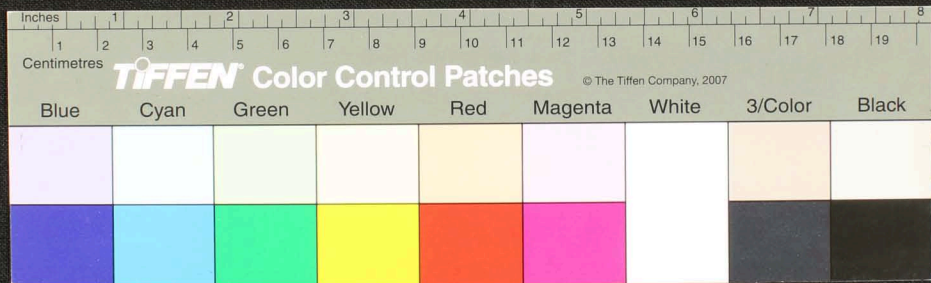


Handwritten Tamil script on a palm leaf manuscript. The text is densely packed and runs horizontally across the length of the leaf. The script is in an older form of the Tamil language. There are some dark spots and signs of wear on the leaf, particularly in the middle section.





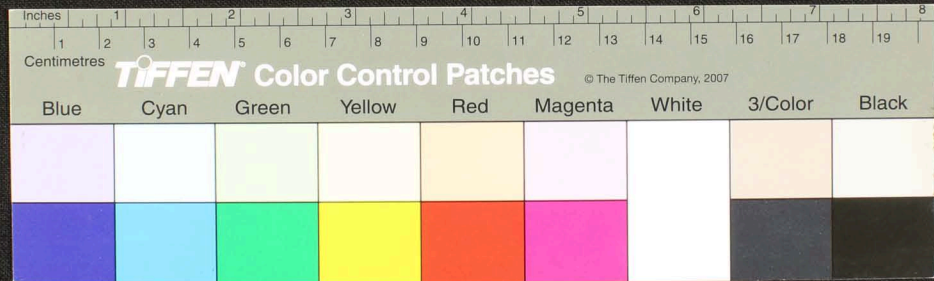
Handwritten Tamil script on a palm leaf manuscript. The text is arranged in approximately 12 horizontal lines across the length of the leaf. Two circular holes are visible, used for threading a cord to bind multiple leaves together. The script is finely etched into the surface of the dried leaf.





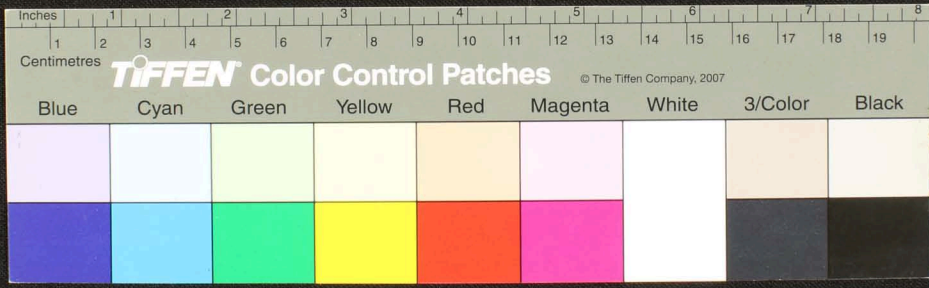


Handwritten Tamil script on a palm leaf manuscript. The text is arranged in approximately 12 horizontal lines across the length of the leaf. Two circular holes are visible, used for threading a cord to bind multiple leaves together. The script is finely etched into the surface of the dried leaf.





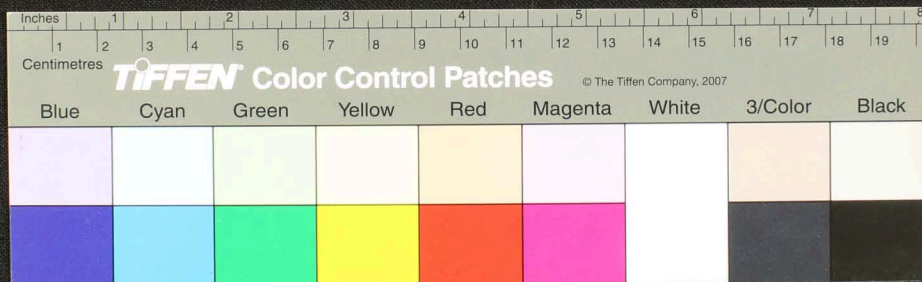
Handwritten Tamil script on a palm leaf manuscript. The text is densely packed and runs horizontally across the length of the leaf. Two circular holes are visible, which were traditionally used for threading a cord to bind multiple leaves together into a book format.







Handwritten Tamil script on a palm leaf manuscript. The text is arranged in approximately 12 horizontal lines across the length of the leaf. Two circular holes are visible, which were traditionally used for threading a cord to bind multiple leaves together. The script is densely packed and appears to be a form of classical or historical Tamil.

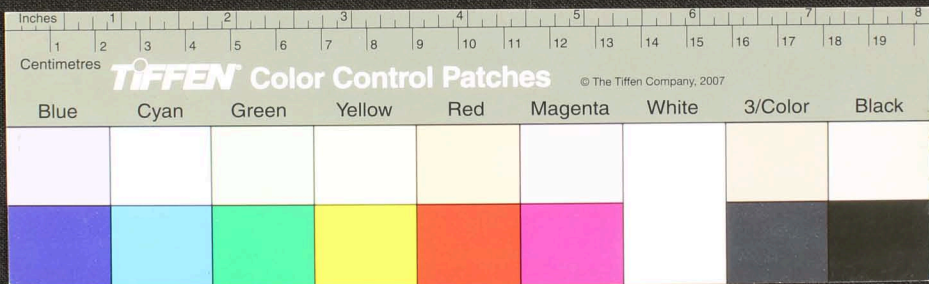








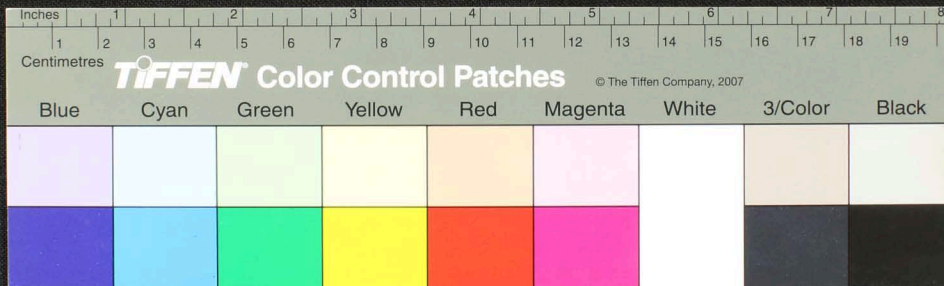
Handwritten text in Tamil script on a palm leaf manuscript. The text is arranged in approximately 12 horizontal lines across the length of the leaf. Two circular holes are visible, which were traditionally used for threading a cord to bind multiple leaves together into a book format. The leaf shows signs of age, including some staining and wear at the ends.







Handwritten Tamil script on a palm leaf manuscript. The text is arranged in approximately 12 horizontal lines across the length of the leaf. Two circular holes are visible, used for threading a cord to bind multiple leaves together. The script is finely etched into the surface of the dried leaf.









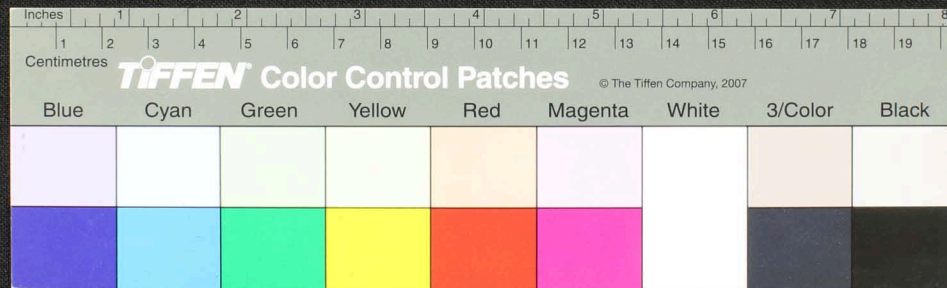






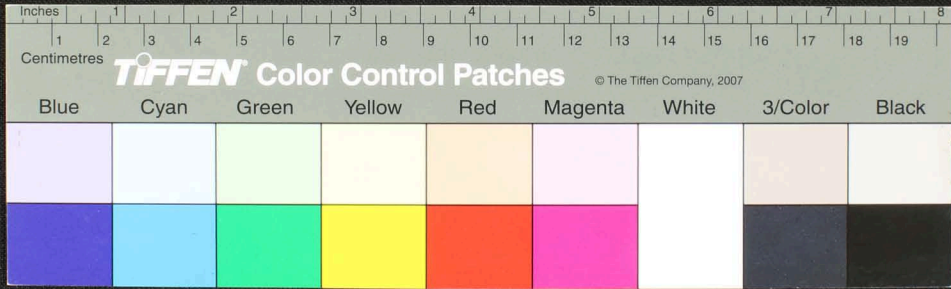


Handwritten Tamil script on a palm leaf manuscript. The text is organized into approximately 12 vertical columns, with each column containing several lines of characters. The script is finely etched into the surface of the dried leaf. Two circular holes are visible, which were traditionally used for threading a cord to bind multiple leaves together into a book format.





Handwritten Tamil script on a palm leaf manuscript. The text is arranged in approximately 12 columns across the length of the leaf. The script is finely etched into the surface of the dried leaf. There are two circular holes visible, which were traditionally used for threading a cord to bind multiple leaves together into a book format.



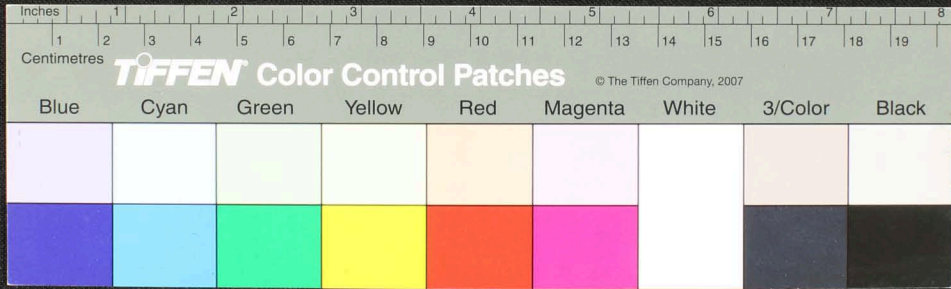








Handwritten text in Tamil script on a palm leaf manuscript. The text is arranged in approximately 12 vertical columns across the length of the leaf. Two circular holes are visible, used for binding multiple leaves together. The script is finely etched into the surface of the dried leaf.





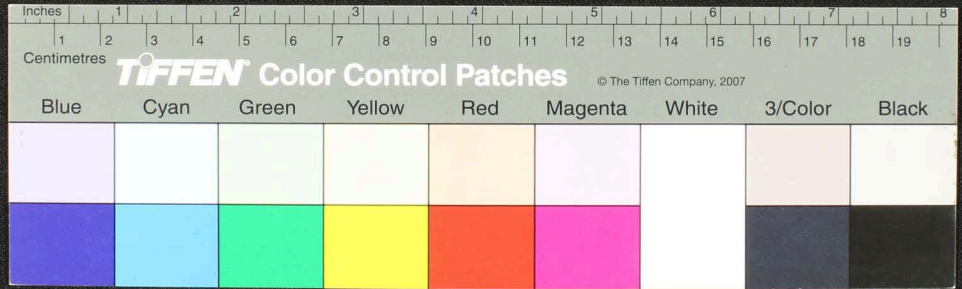








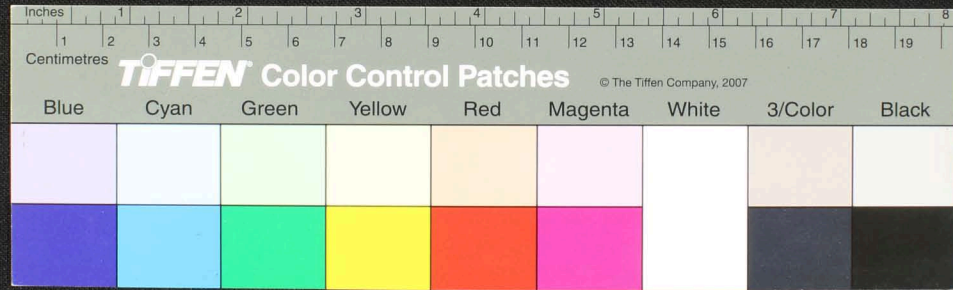
Handwritten Tamil script on a palm leaf manuscript. The text is arranged in approximately 12 columns across the length of the leaf. Two circular holes are visible, used for threading a cord to bind multiple leaves together. The script is finely etched into the surface of the dried leaf.





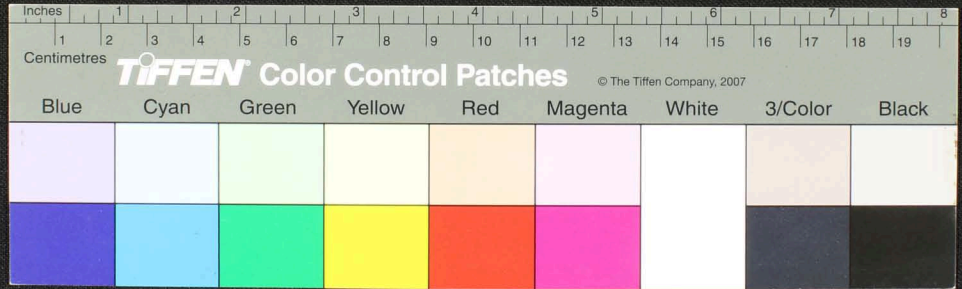


Handwritten text in Tamil script on a palm leaf manuscript. The text is arranged in approximately 12 columns across the length of the leaf. Two circular holes are visible, used for threading a cord to bind multiple leaves together. The script is finely etched into the surface of the dried leaf.

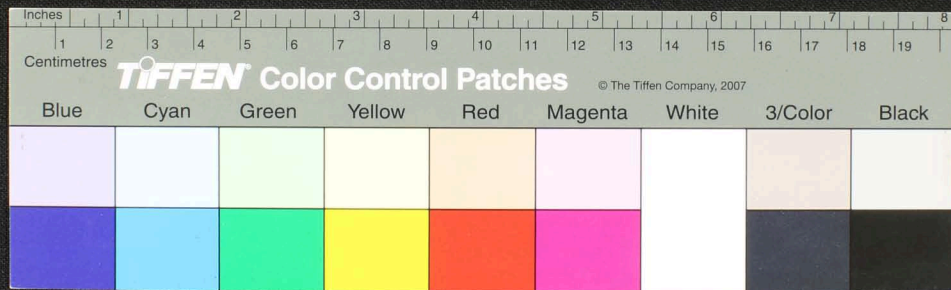




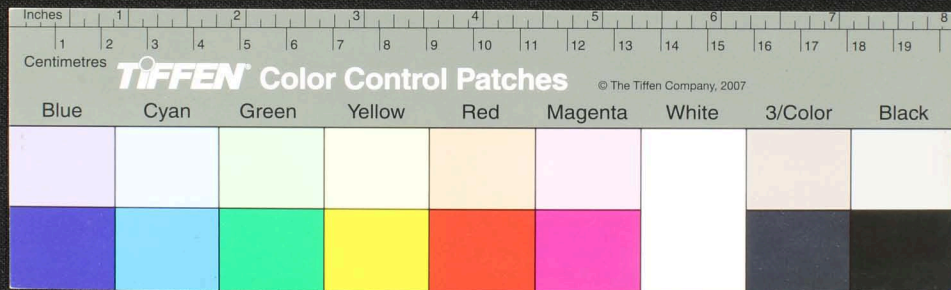
Handwritten text in Tamil script on a palm leaf manuscript. The text is arranged in approximately 12 columns across the length of the leaf. There are three circular holes punched along the leaf, which were traditionally used for threading a cord to bind multiple leaves together into a book format. The script is finely etched into the surface of the dried leaf.



Handwritten text in Tamil script on a palm leaf manuscript. The text is arranged in approximately 12 horizontal lines across the length of the leaf. Two circular holes are visible, used for binding multiple leaves together. The script is finely etched into the surface of the dried leaf.

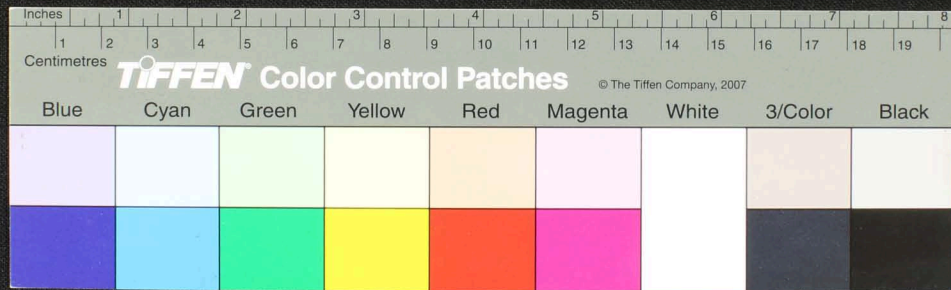


Handwritten text in Tamil script on a palm leaf manuscript. The text is arranged in approximately 12 columns across the length of the leaf. Two circular holes are visible, used for binding multiple leaves together. The script is finely etched into the surface of the dried leaf.



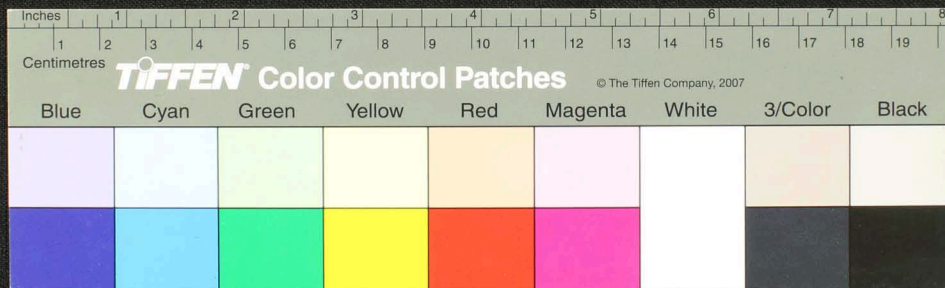


Handwritten Tamil script on a palm leaf manuscript. The text is arranged in approximately 12 vertical columns across the length of the leaf. The script is finely etched into the surface of the dried leaf. The leaf shows signs of age, including some dark spots and a hole near the center.





Handwritten Tamil script on a palm leaf manuscript. The text is arranged in approximately 12 columns across the length of the leaf. Two circular holes are visible, used for threading a cord to bind multiple leaves together. The script is finely etched into the surface of the dried leaf.

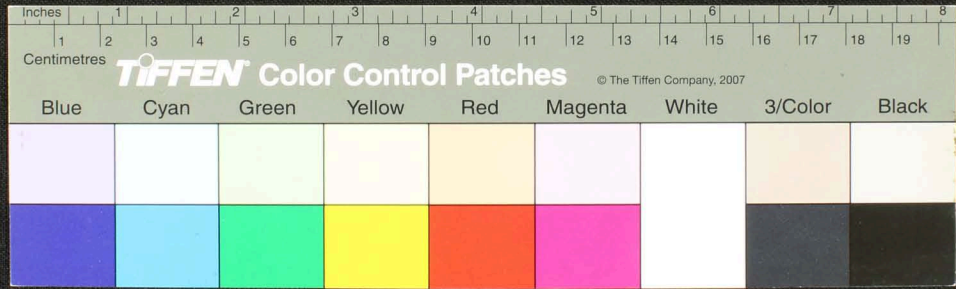








Handwritten text in Tamil script on a palm leaf manuscript. The text is arranged in approximately 12 vertical columns across the length of the leaf. Two circular holes are visible, used for threading a cord to bind multiple leaves together. The script is finely etched into the surface of the dried leaf.





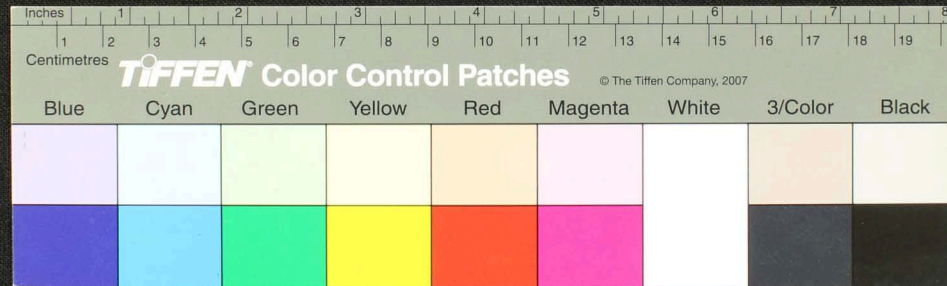










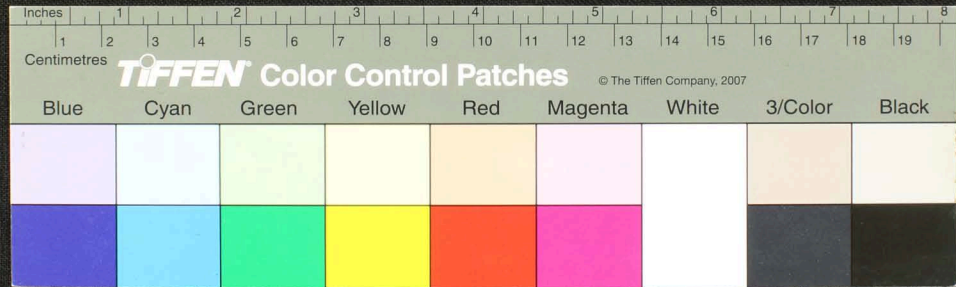








Handwritten Tamil script on a palm leaf manuscript. The text is arranged in approximately 12 columns across the length of the leaf. Two circular holes are visible, used for threading a cord to bind multiple leaves together. The script is densely packed and appears to be a form of classical or historical Tamil.









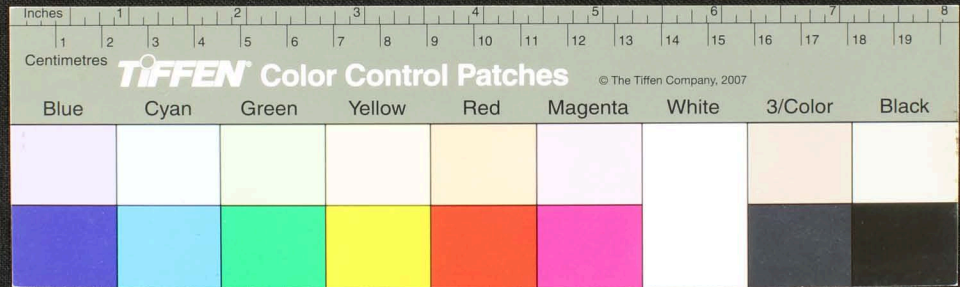








A long, thin palm-leaf manuscript strip with handwritten text in Tamil script. The text is arranged in approximately 10 columns across the length of the leaf. There are two circular holes punched through the leaf, one near the left end and one near the right end, used for threading a cord to bind multiple leaves together. The leaf shows signs of age, including some staining and wear at the ends.







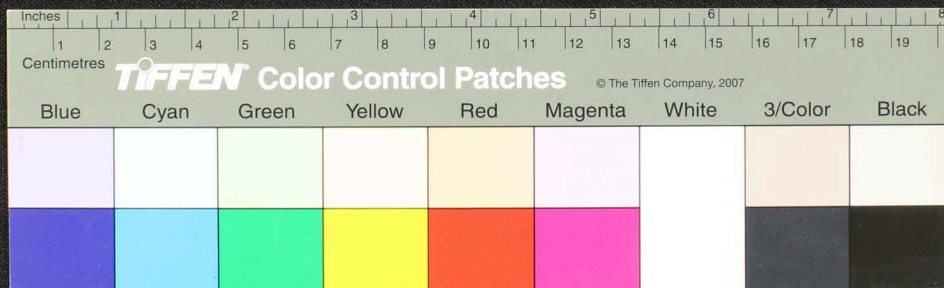




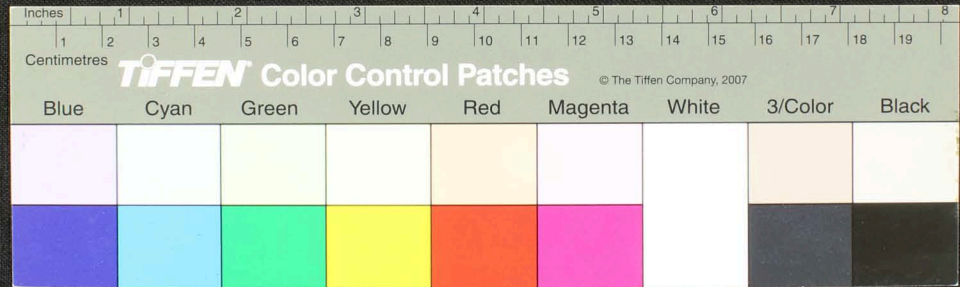


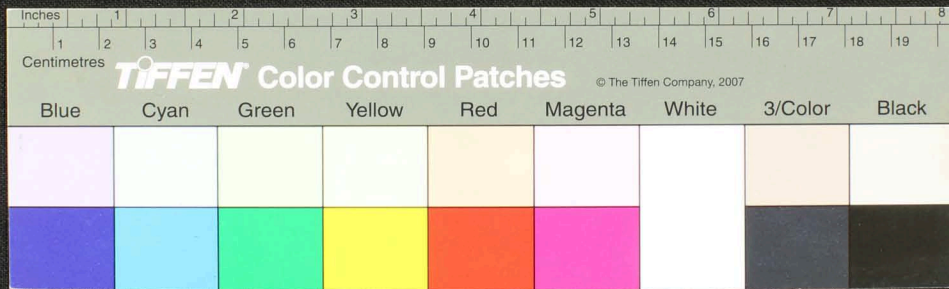


Handwritten text in Tamil script on a palm leaf manuscript. The text is arranged in approximately 12 horizontal lines across the length of the leaf. Two circular holes are visible, which were traditionally used for threading a cord to bind multiple leaves together into a book format. The script is finely etched into the surface of the dried leaf.



A long, narrow, yellowish-brown palm-leaf manuscript strip with handwritten text in Tamil script. The text is arranged in approximately 15 horizontal lines. Two circular holes are visible, one near the left end and one near the right end, used for threading a cord to bind multiple leaves together. The leaf shows signs of age, including some staining and wear at the edges.



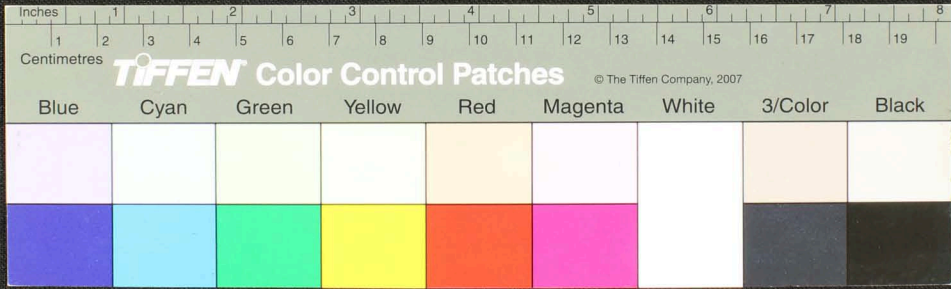








Handwritten Tamil script on a palm leaf manuscript strip. The text is arranged in approximately 12 horizontal lines across the length of the leaf. Two circular holes are visible, which were traditionally used for threading a cord to bind multiple leaves together into a book format. The script is finely etched into the surface of the dried leaf.





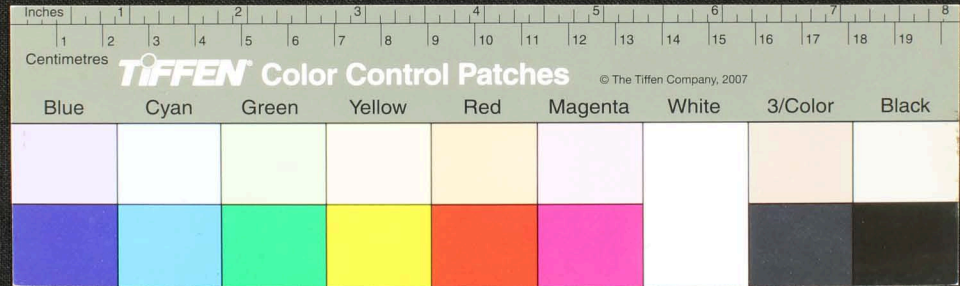


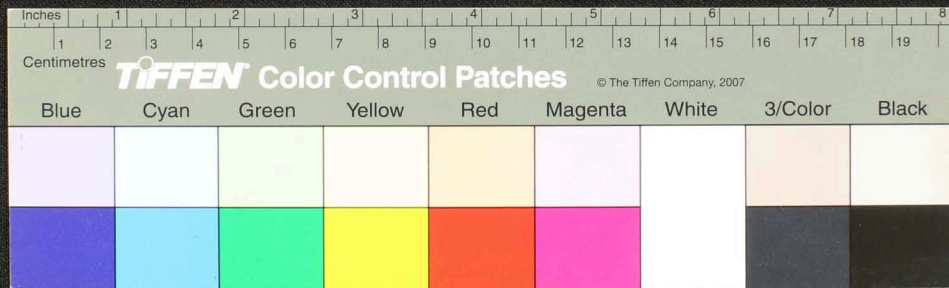






Handwritten text in Tamil script on a palm leaf manuscript. The text is arranged in approximately 15 horizontal lines across the length of the leaf. There are two circular holes, one near the left end and one near the right end, which were traditionally used for threading a cord to bind multiple leaves together. The leaf shows signs of age, including some dark spots and wear.

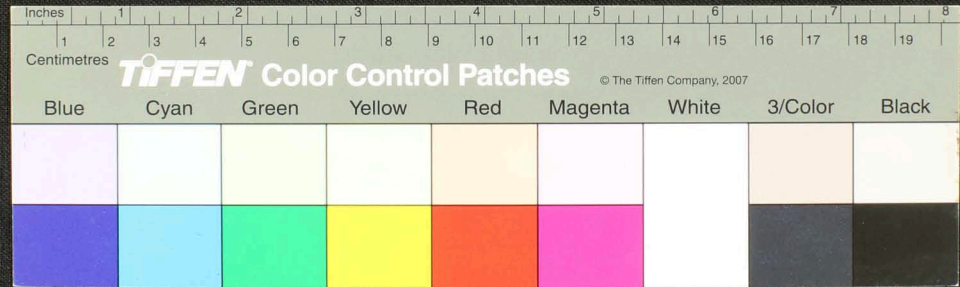
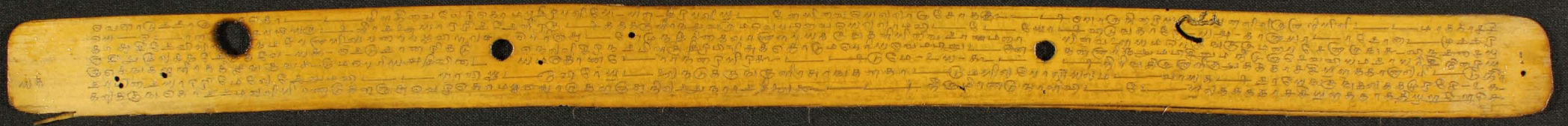




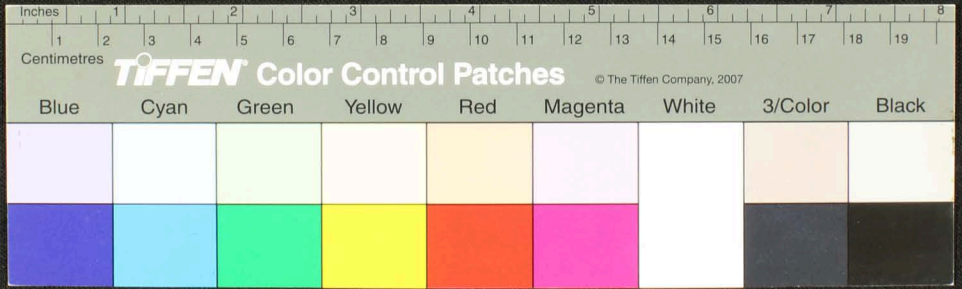




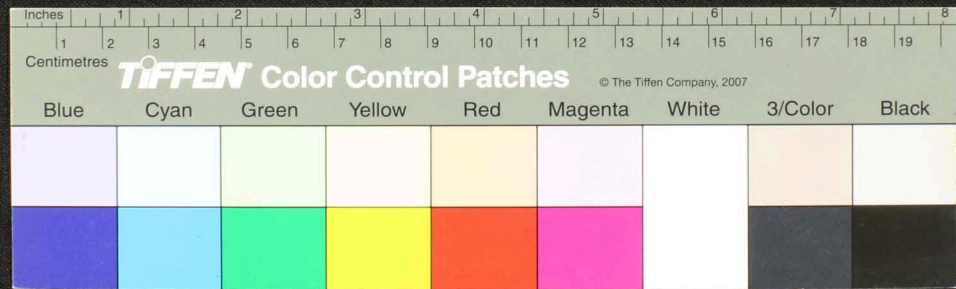




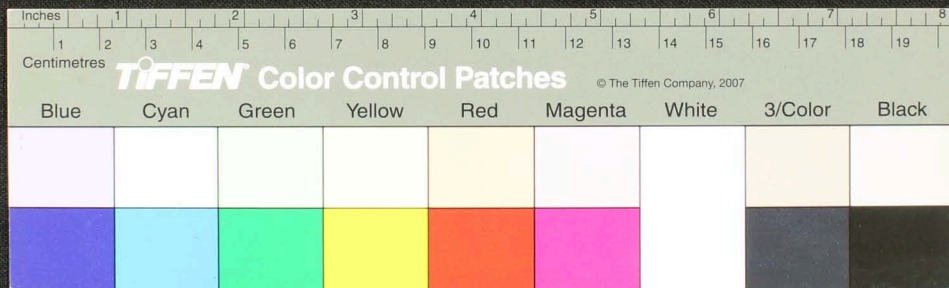
Handwritten Tamil script on a palm leaf manuscript. The text is arranged in approximately 12 horizontal lines across the length of the leaf. There are four circular holes punched along the leaf, which were traditionally used for threading a cord to bind multiple leaves together into a book format. The script is finely etched into the surface of the dried leaf.



Handwritten text in Tamil script on a palm leaf manuscript. The text is arranged in approximately 10 horizontal lines across the length of the leaf. There are two circular holes punched through the leaf, one near the left end and one near the right end, which were traditionally used for threading a cord to bind multiple leaves together into a book format. The script is finely etched into the surface of the dried leaf.

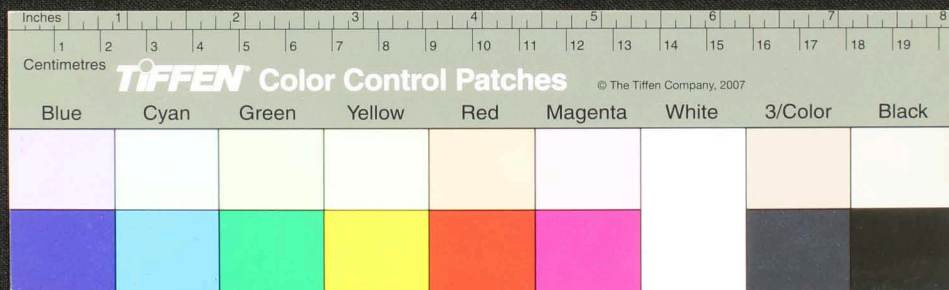




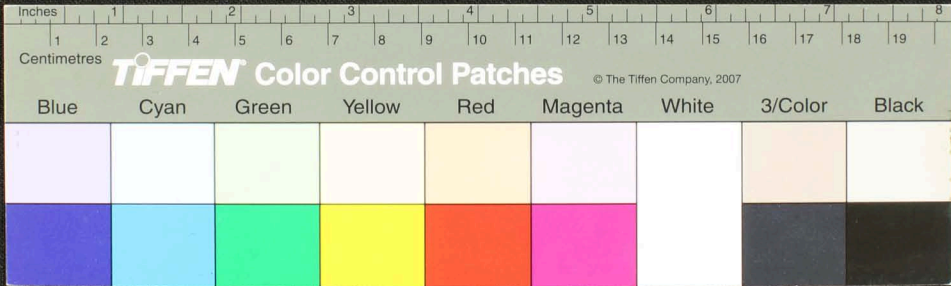




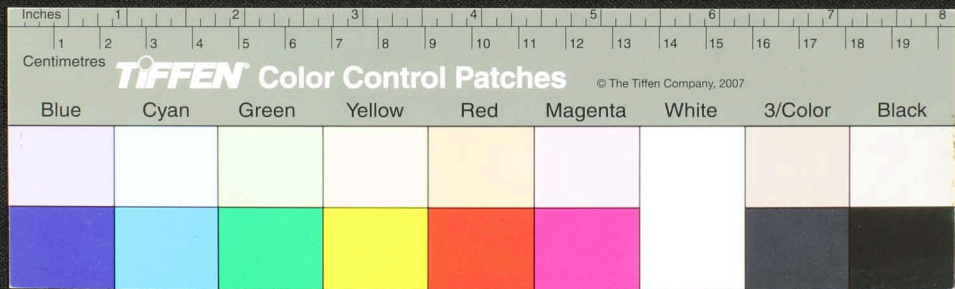




Handwritten Tamil script on a palm leaf manuscript. The text is arranged in approximately 15 horizontal lines across the length of the leaf. The script is finely etched into the surface of the dried leaf. There are two distinct circular holes along the leaf, which were traditionally used for threading a cord to bind multiple leaves together into a book format. The leaf shows signs of age, including some darkening and wear at the edges.



Handwritten Tamil script on a palm leaf manuscript. The text is arranged in approximately 15 horizontal lines across the length of the leaf. Two circular holes are visible, used for threading a cord to bind multiple leaves together. The script is finely etched into the surface of the dried leaf.

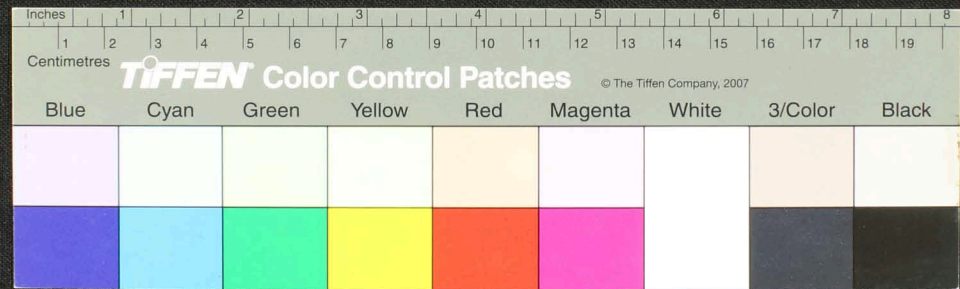




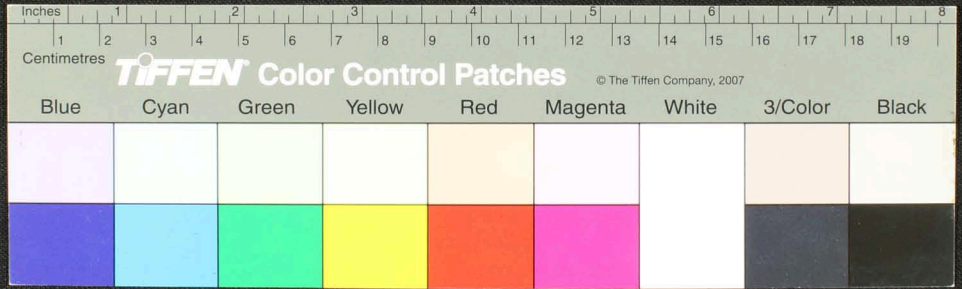




Handwritten text in Tamil script on a palm leaf manuscript. The text is arranged in approximately 15 horizontal lines across the length of the leaf. Two circular holes are visible, which were traditionally used for threading a cord to bind multiple leaves together. The leaf shows signs of age, including some darkening and wear at the ends.



Handwritten Tamil script on a palm leaf manuscript. The text is arranged in approximately 15 horizontal lines across the length of the leaf. The script is finely etched into the surface of the dried leaf. There are two circular holes visible, which were traditionally used for threading a cord to bind multiple leaves together into a book format. The leaf shows signs of age, with some darkening and wear, particularly on the left side.



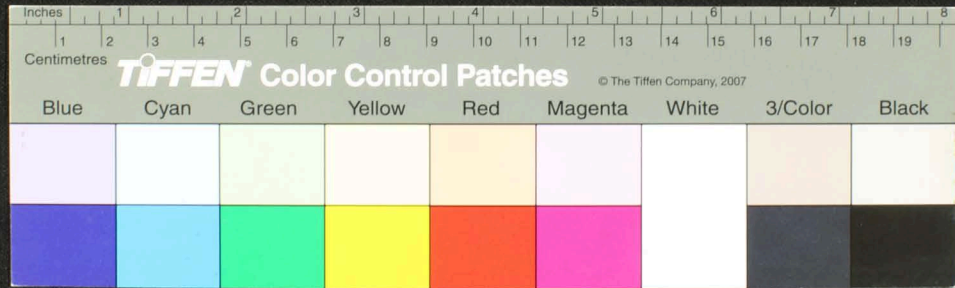




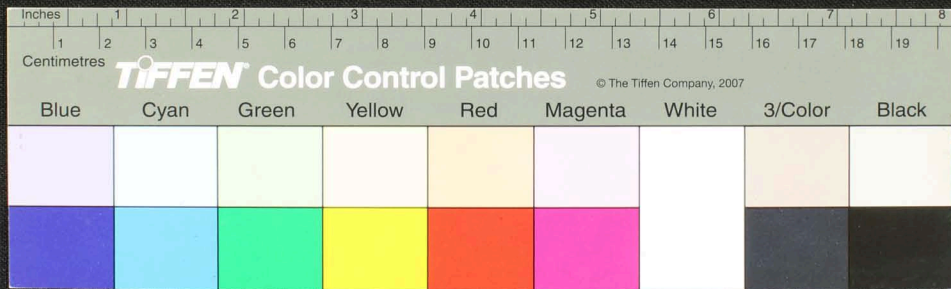




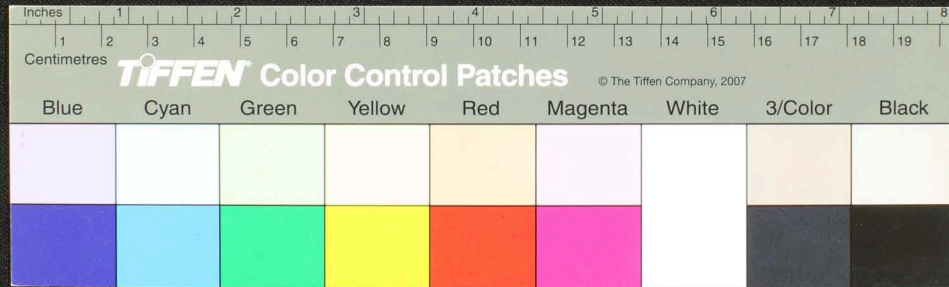
Handwritten Tamil script on a palm leaf manuscript. The text is arranged in approximately 12 horizontal lines across the length of the leaf. There are two circular holes, one on the left and one on the right, which were traditionally used for threading a cord to bind multiple leaves together. The leaf shows signs of age, including some darkening and wear.



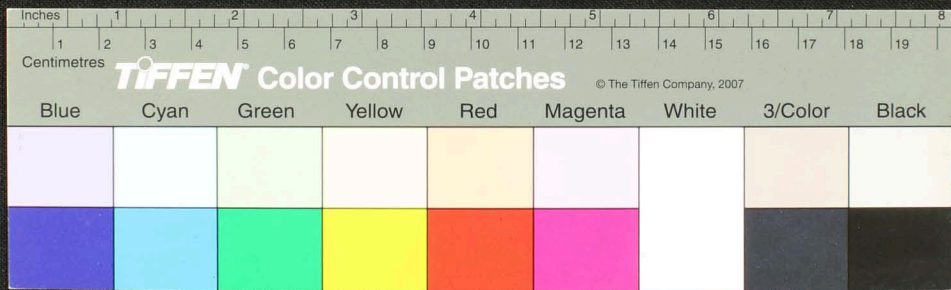
Handwritten text in Tamil script on a palm leaf manuscript. The text is arranged in approximately 12 horizontal lines across the length of the leaf. Two circular holes are visible, used for threading a cord to bind multiple leaves together. The script is finely etched into the surface of the dried leaf.



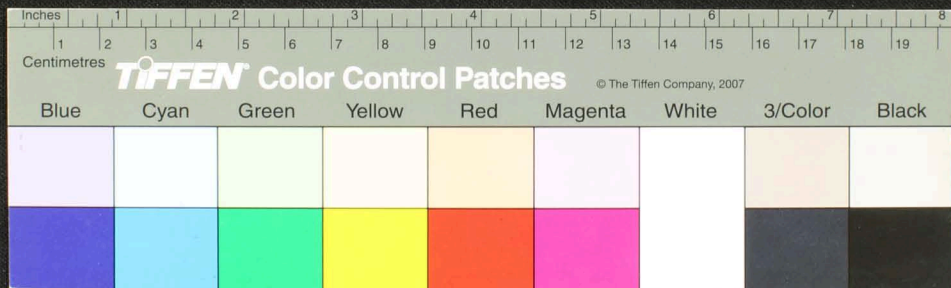
Handwritten text in Tamil script on a palm leaf manuscript. The text is arranged in approximately 12 horizontal lines across the length of the leaf. There are three distinct circular holes along the leaf, which were traditionally used for threading a cord to bind multiple leaves together into a book format. The script is finely etched into the surface of the dried leaf.



Handwritten text in Tamil script on a palm leaf manuscript. The text is arranged in approximately 15 horizontal lines across the length of the leaf. There are several dark, circular holes or indentations along the leaf, likely from a traditional binding method. The leaf shows signs of age and wear, with some dark spots and irregularities in the surface.

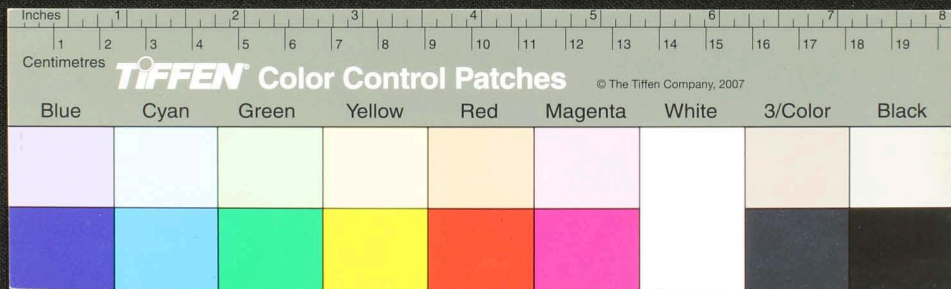


Handwritten text in Tamil script on a palm leaf manuscript. The text is arranged in approximately 12 horizontal lines across the length of the leaf. There are three circular holes punched along the top edge, which were traditionally used for threading a cord to bind multiple leaves together into a book format. The ink is dark and the leaf shows signs of age and wear.

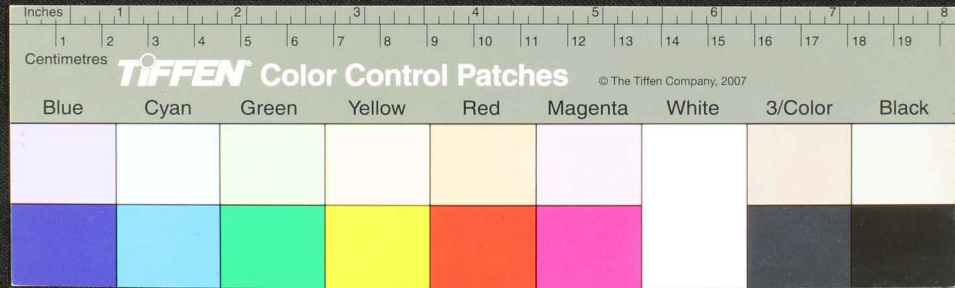




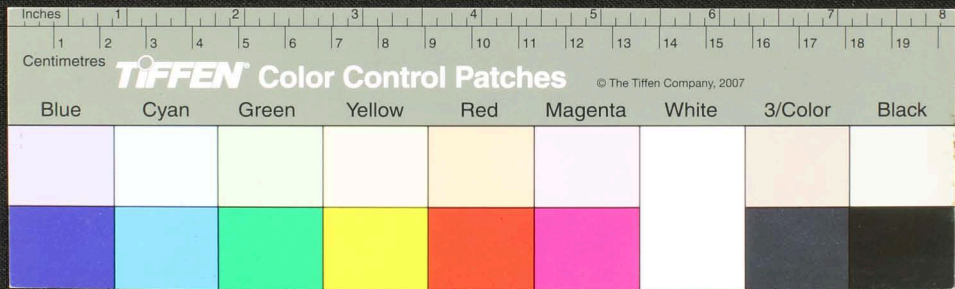
Handwritten Tamil script on a palm leaf manuscript. The text is arranged in approximately 12 horizontal lines across the length of the leaf. Two circular holes are visible, which were traditionally used for threading a cord to bind multiple leaves together. The script is finely etched into the surface of the dried leaf.

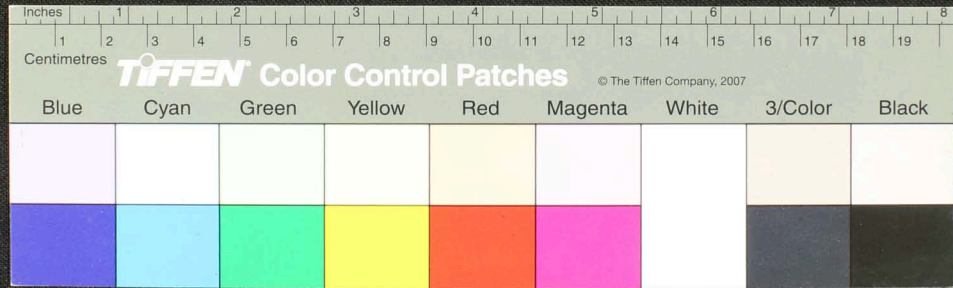
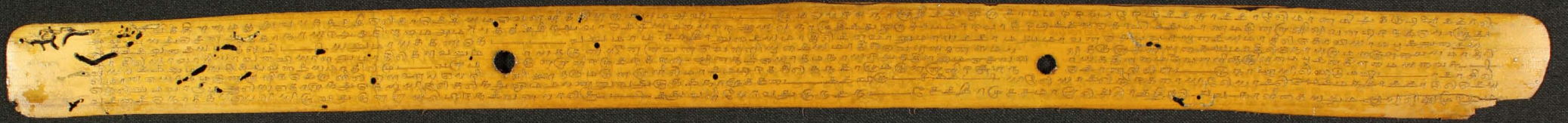


Handwritten Tamil script on a palm leaf manuscript. The text is arranged in approximately 10 horizontal lines across the length of the leaf. Two circular holes are visible, which were traditionally used for threading a cord to bind multiple leaves together into a book format. The script is finely etched into the surface of the dried leaf.

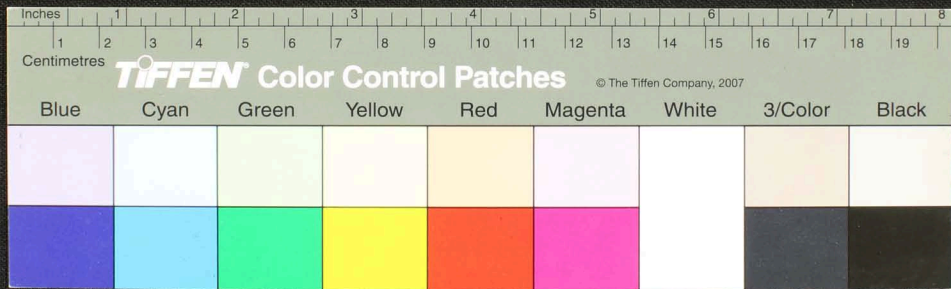


Handwritten text in Tamil script on a palm leaf manuscript. The text is arranged in approximately 10 horizontal lines across the length of the leaf. The script is dense and characteristic of traditional Tamil inscriptions. There are two circular holes visible on the leaf, which were traditionally used for threading a cord to bind multiple leaves together into a book format.

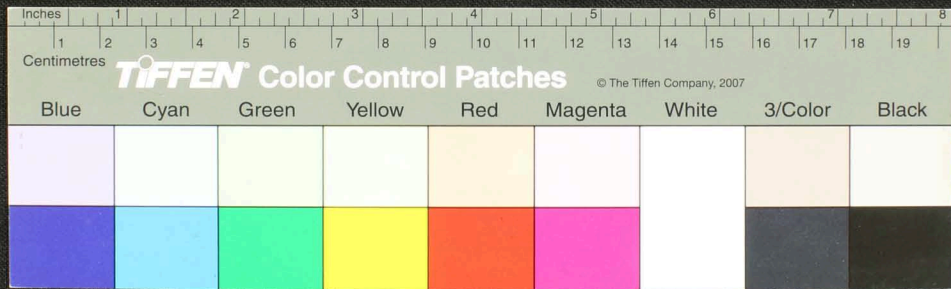




Handwritten Tamil script on a palm leaf manuscript. The text is arranged in approximately 10 horizontal lines across the length of the leaf. The script is densely packed and appears to be a form of classical or religious Tamil. There are several dark spots and irregularities on the leaf, possibly due to age or damage.

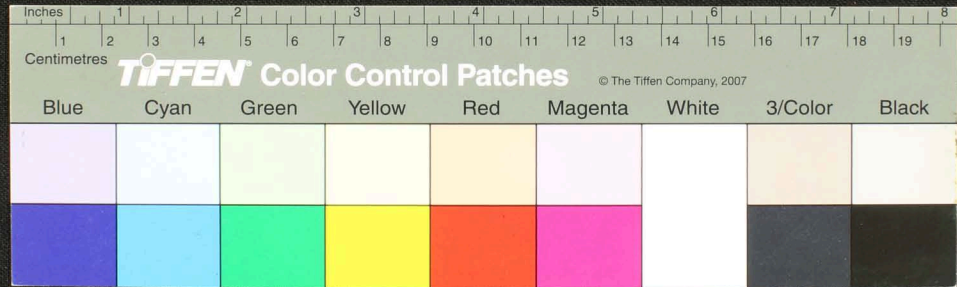


Handwritten Tamil script on a palm leaf manuscript. The text is arranged in approximately 12 horizontal lines across the length of the leaf. There are several small circular holes along the leaf, likely from a traditional binding method. The script is finely etched into the surface of the dried leaf.



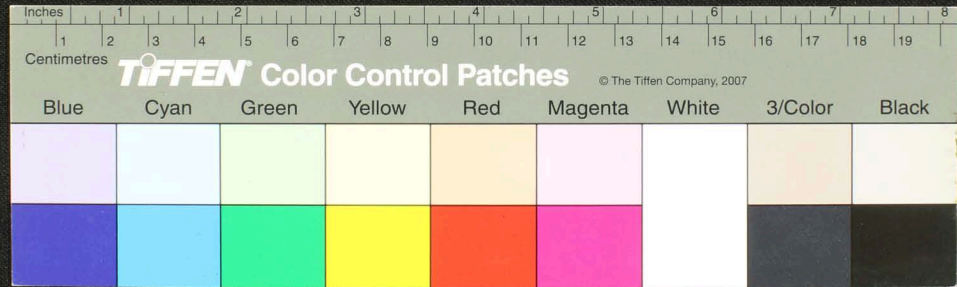


Handwritten text in Tamil script on a palm leaf manuscript. The text is arranged in approximately 12 horizontal lines across the length of the leaf. The script is finely etched into the surface of the dried leaf. There are two circular holes visible, which were traditionally used for threading a cord to bind multiple leaves together into a book format.

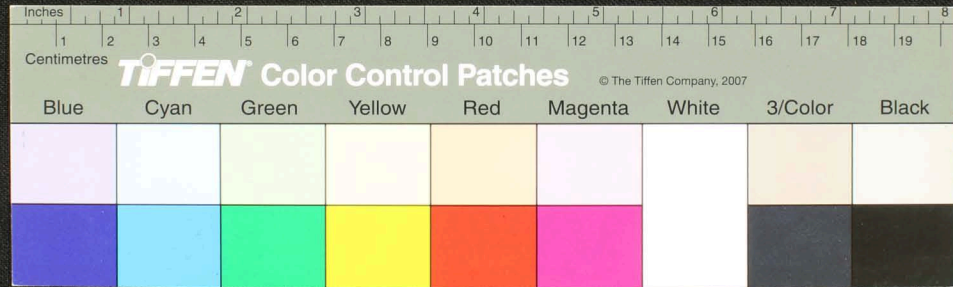




Handwritten text in Tamil script on a palm leaf manuscript. The text is arranged in approximately 12 horizontal lines across the length of the leaf. Two circular holes are visible, which were traditionally used for threading a cord to bind multiple leaves together into a book format. The ink is dark and the leaf shows signs of age and wear.



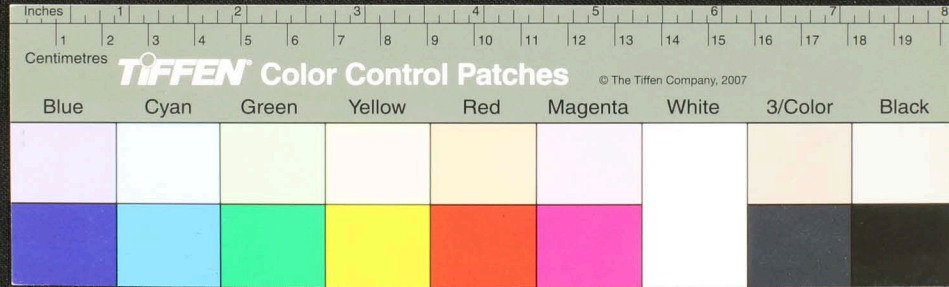
Handwritten Tamil script on a palm leaf manuscript. The text is densely packed and spans the entire length of the leaf. Two circular holes are visible, used for binding multiple leaves together.



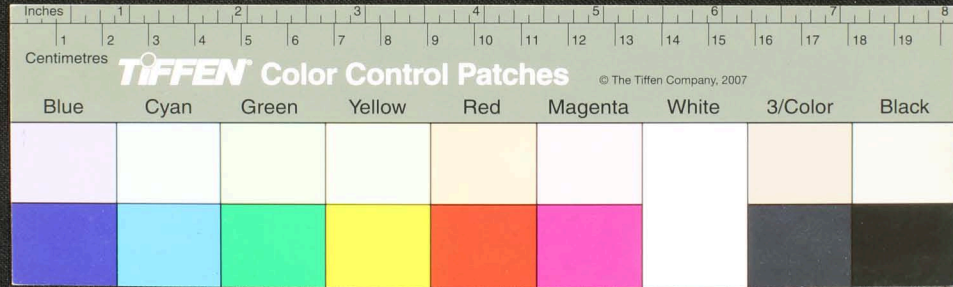




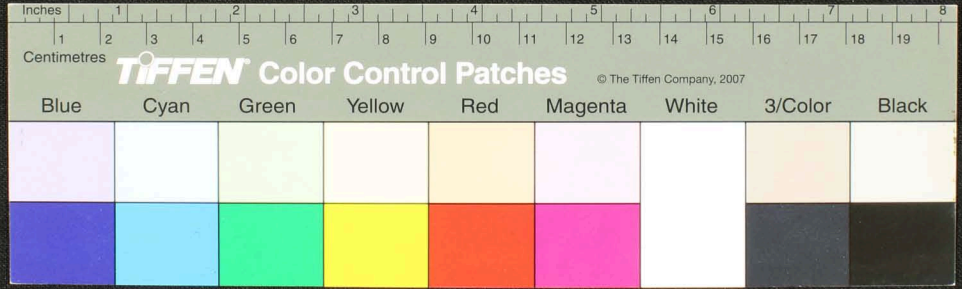
Handwritten text in Tamil script on a palm leaf manuscript. The text is arranged in approximately 12 horizontal lines across the length of the leaf. There are two circular holes, one near the left end and one near the right end, which were traditionally used for threading a cord to bind multiple leaves together. The leaf shows signs of age, including some darkening and wear at the ends.



Handwritten text in Tamil script on a palm leaf manuscript. The text is arranged in approximately 12 horizontal lines across the length of the leaf. The script is finely etched into the surface of the dried leaf. There are two distinct circular holes along the length of the leaf, which were traditionally used for threading a cord to bind multiple leaves together into a book format. The leaf shows signs of age, including some dark spots and irregular edges.



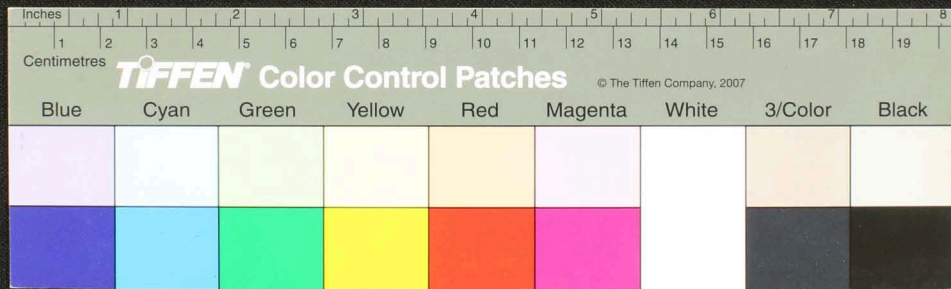
Handwritten text in Tamil script on a palm leaf manuscript. The text is densely packed and spans the entire length of the leaf. Two circular holes are visible, used for binding multiple leaves together.





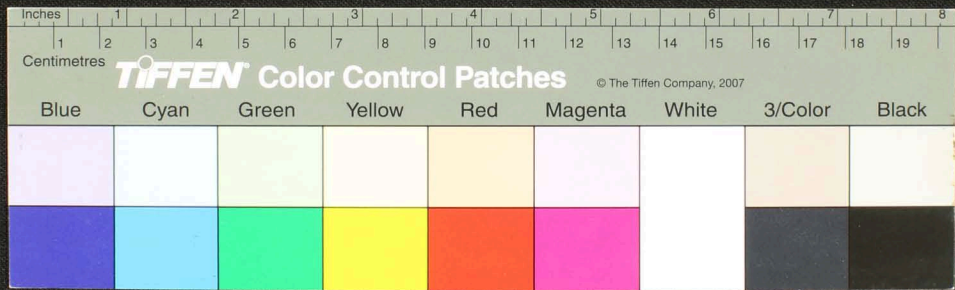


Handwritten Tamil script on a palm leaf manuscript. The text is arranged in approximately 15 horizontal lines across the length of the leaf. Two circular holes are visible, used for threading a cord to bind multiple leaves together. The script is finely etched into the surface of the dried leaf.





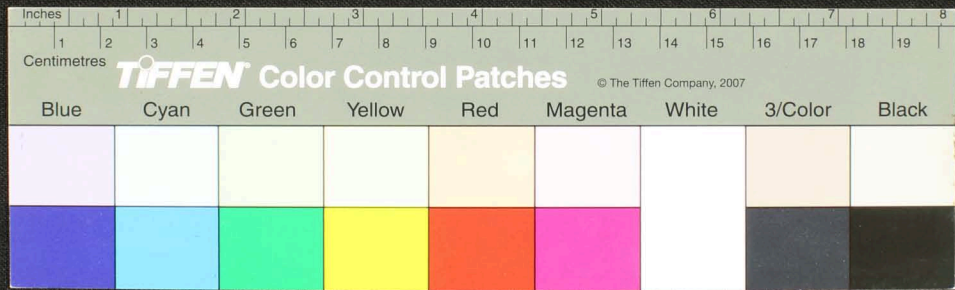
Handwritten Tamil script on a palm leaf manuscript. The text is arranged in approximately 12 horizontal lines across the length of the leaf. There are two circular holes visible, which were traditionally used for threading a cord to bind multiple leaves together into a book format. The script is finely etched into the surface of the dried leaf.





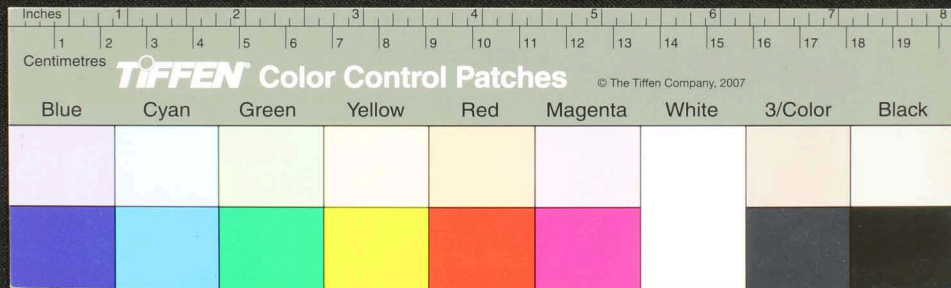


Handwritten text in Tamil script on a palm leaf manuscript. The text is arranged in approximately 15 horizontal lines across the length of the leaf. Two circular holes are visible, which were traditionally used for threading a cord to bind multiple leaves together into a book format. The script is finely etched into the surface of the dried leaf.





Handwritten Tamil script on a palm leaf manuscript. The text is arranged in approximately 12 horizontal lines across the length of the leaf. There are two circular holes punched through the leaf, one near the left end and one near the right end, which were traditionally used for threading a cord to bind multiple leaves together. The script is finely etched into the surface of the dried leaf.

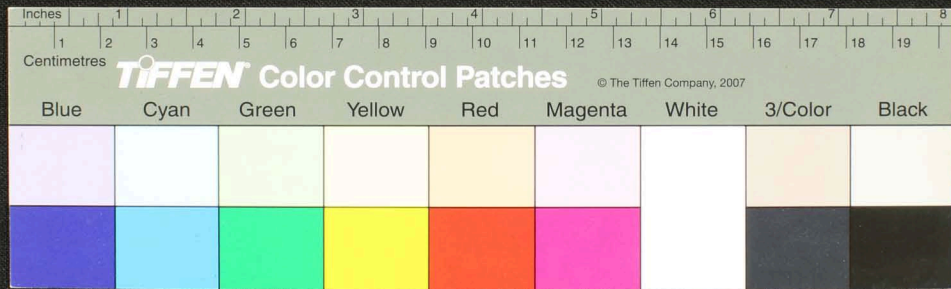




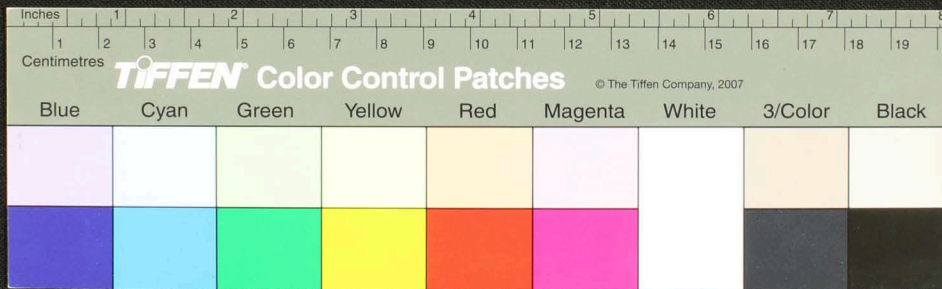
A long, narrow, yellowish-brown palm-leaf manuscript strip with handwritten text in Tamil script. The text is arranged in approximately 12 horizontal lines. The strip shows signs of age, including several holes and frayed edges, particularly on the left side. The script is finely etched into the surface of the leaf.



Handwritten Tamil script on a palm leaf manuscript. The text is arranged in approximately 12 horizontal lines across the length of the leaf. There are three distinct circular holes along the top edge, which were traditionally used for threading a cord to bind multiple leaves together. The script is finely etched into the surface of the dried leaf.

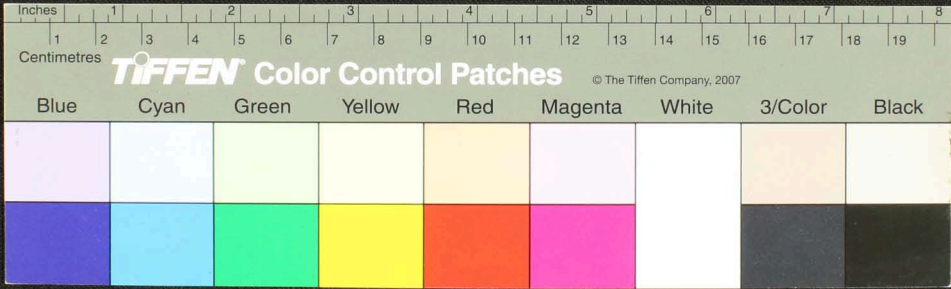


Handwritten Tamil script on a palm leaf manuscript. The text is arranged in approximately 10 horizontal lines across the length of the leaf. The script is finely etched into the surface of the dried leaf. There are two circular holes visible, which were traditionally used for threading a cord to bind multiple leaves together into a book format. The leaf shows signs of age, including some dark spots and slight discoloration.

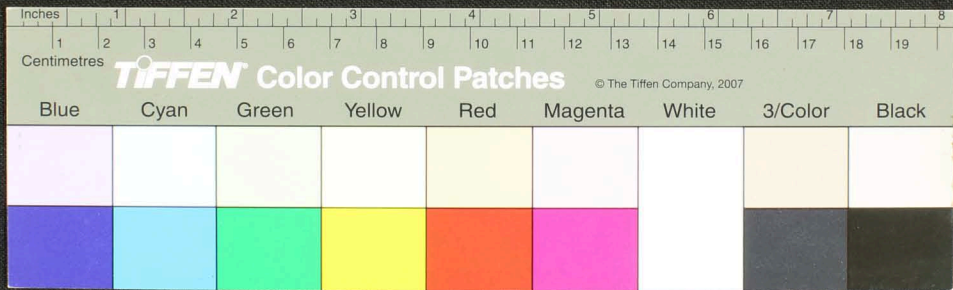




Handwritten Tamil script on a palm leaf manuscript. The text is arranged in approximately 10 horizontal lines across the length of the leaf. Two circular holes are visible, used for binding multiple leaves together. The script is finely etched into the natural texture of the dried leaf.

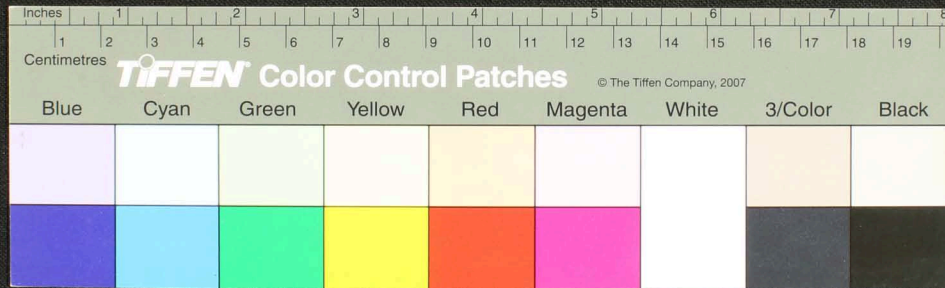


Handwritten Tamil script on a palm leaf manuscript. The text is arranged in approximately 12 horizontal lines across the length of the leaf. Two circular holes are visible, which were traditionally used for threading a cord to bind multiple leaves together into a book format. The script is finely etched into the surface of the dried leaf.





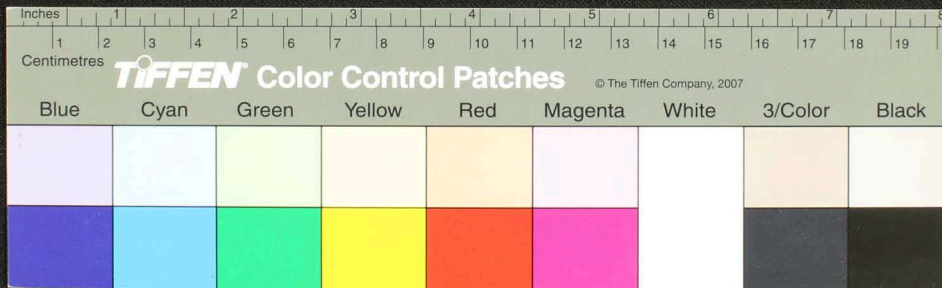
Handwritten text in Tamil script on a palm leaf manuscript. The text is arranged in horizontal lines across the length of the leaf. There are two circular holes visible, which were traditionally used for threading a cord to bind multiple leaves together into a book format. The leaf shows signs of age, including some dark spots and irregular edges.



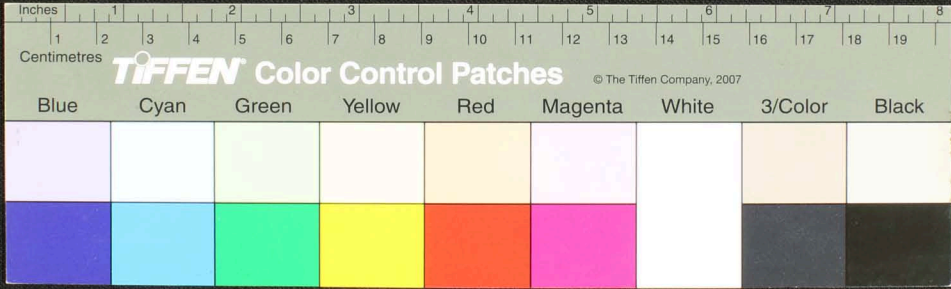


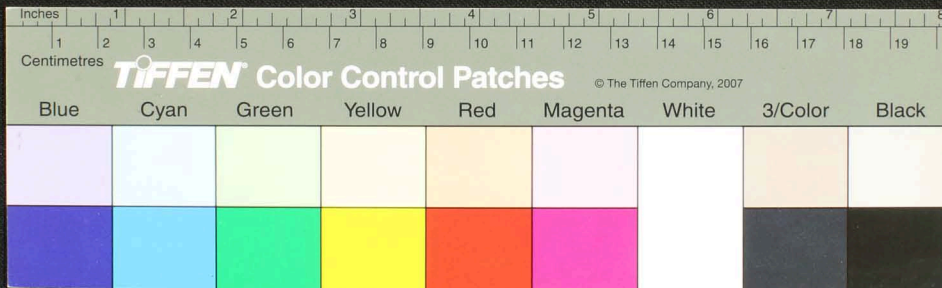
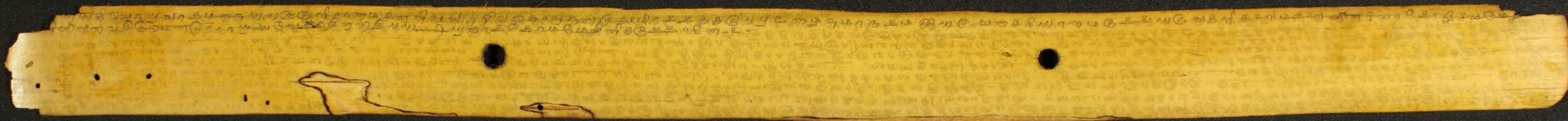


Handwritten text in Tamil script on a palm leaf manuscript. The text is arranged in approximately 10 horizontal lines across the length of the leaf. There are two circular holes visible, which were traditionally used for threading a cord to bind multiple leaves together. The leaf shows signs of age, including some dark spots and irregular edges.

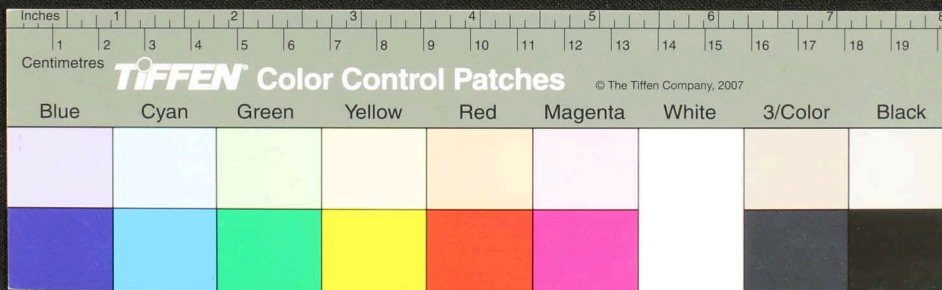


Handwritten text in Tamil script on a palm leaf manuscript. The text is densely packed and spans the length of the leaf. There are two circular holes visible, which were traditionally used for threading a cord to bind multiple leaves together into a book format.





Handwritten text in Tamil script on a palm leaf manuscript. The text is arranged in approximately 15 horizontal lines across the length of the leaf. There are two circular holes visible, which were traditionally used for threading a cord to bind multiple leaves together. The leaf shows signs of age, including some dark spots and a frayed left edge.



Handwritten text in Tamil script on a palm leaf manuscript. The text is densely packed and runs horizontally across the length of the leaf. There are two circular holes visible, which were traditionally used for threading a cord to bind multiple leaves together into a book format. The leaf shows signs of age, including some dark spots and a slightly irregular, worn edge.

