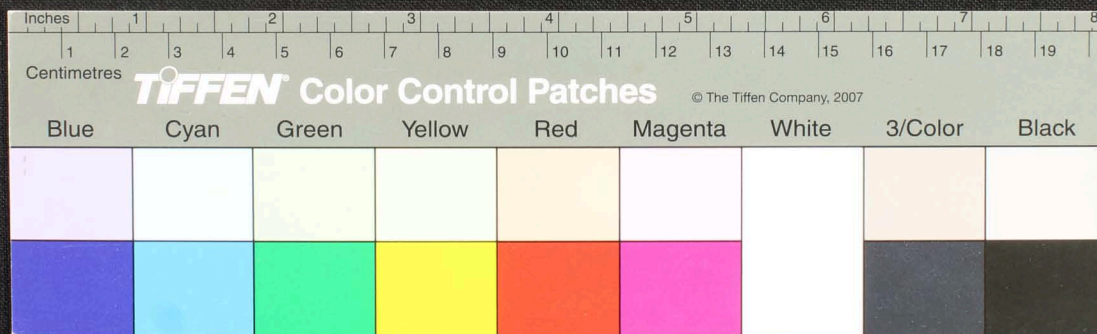
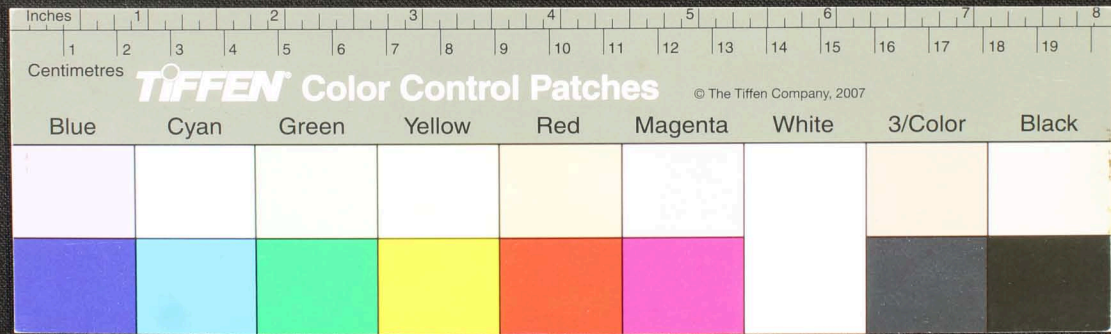
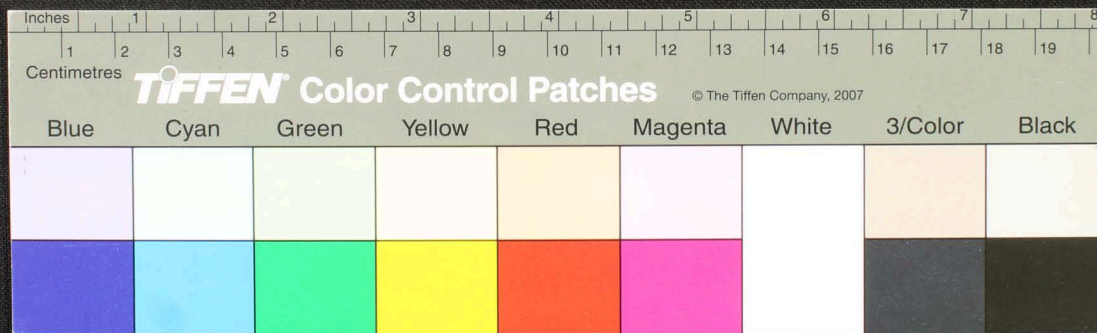


Blue	Cyan	Green	Yellow	Red	Magenta	White	3/Color	Black

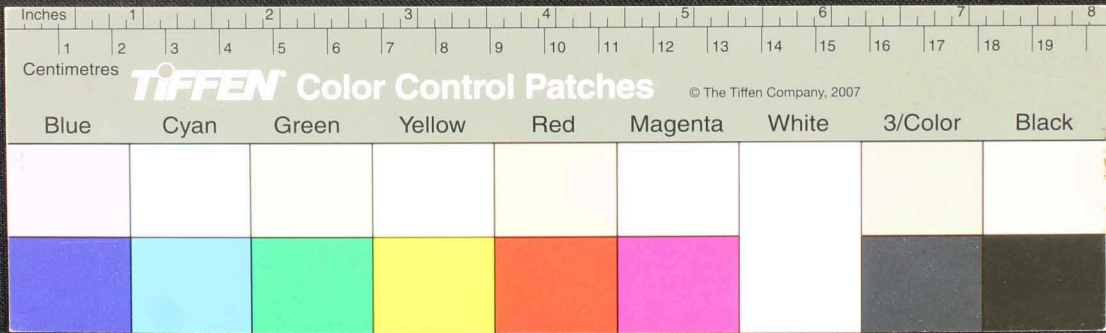


Blue	Cyan	Green	Yellow	Red	Magenta	White	3/Color	Black

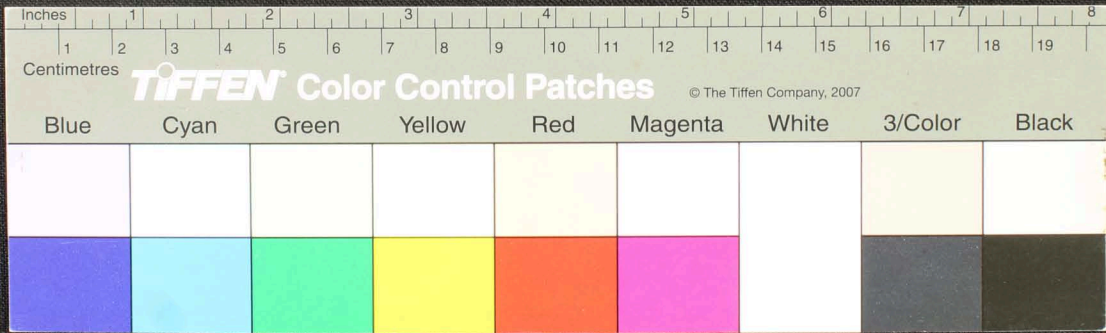




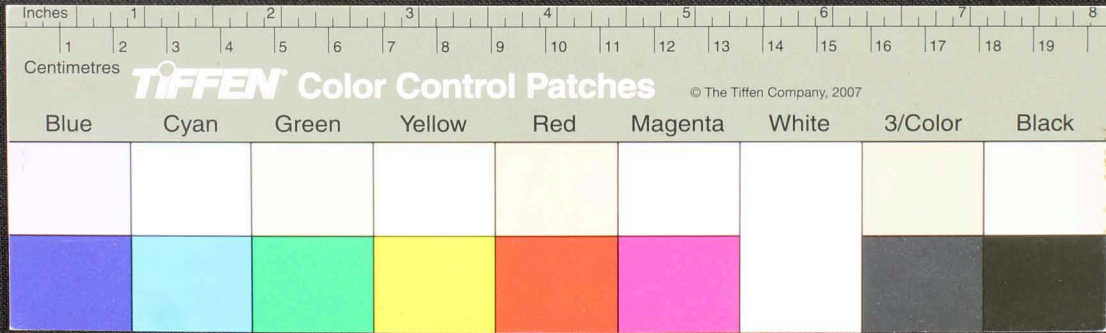
Handwritten Tamil script on a palm leaf manuscript. The text is densely packed and appears to be a historical record or a religious text. The leaf shows signs of age, including two circular holes and some staining.



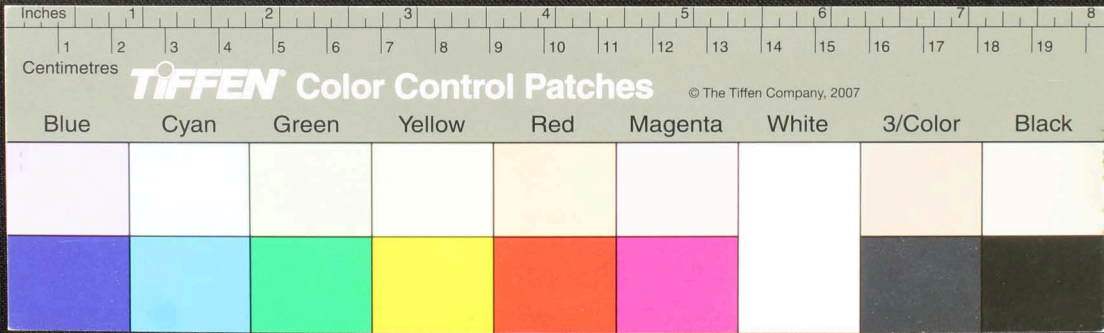
Handwritten Tamil script on a palm leaf manuscript. The text is densely packed and spans the length of the leaf. Two circular holes are visible, which were traditionally used for threading a cord to bind multiple leaves together. The script is written in a cursive style characteristic of traditional Tamil manuscripts.



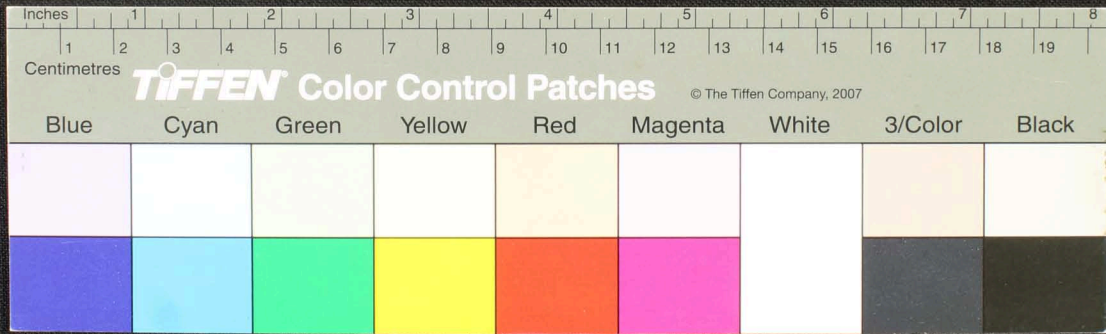
Handwritten Tamil script on a palm leaf manuscript. The text is densely packed and runs horizontally across the length of the leaf. There are two prominent circular holes, likely from a traditional binding system. The leaf shows signs of age and wear, with some discoloration and fraying at the edges.



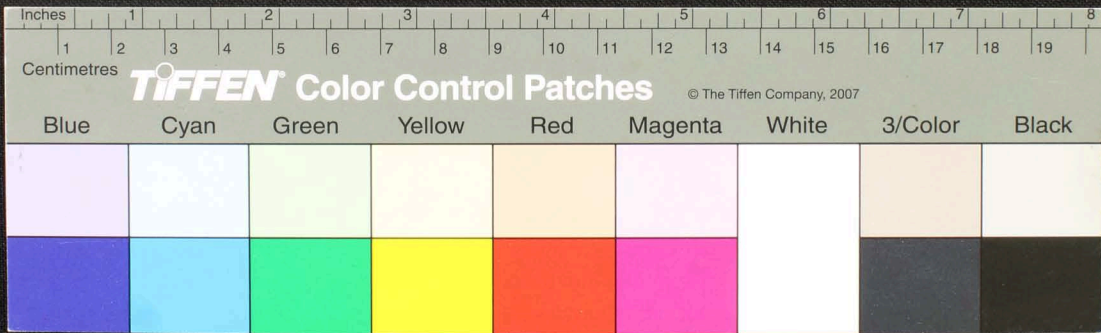
Handwritten Tamil script on a palm leaf manuscript. The text is densely packed and spans the length of the leaf. Two circular holes are visible, which were traditionally used for threading a cord to bind multiple leaves together. The script is written in a traditional style, with some characters appearing to be in a different dialect or historical form of Tamil.



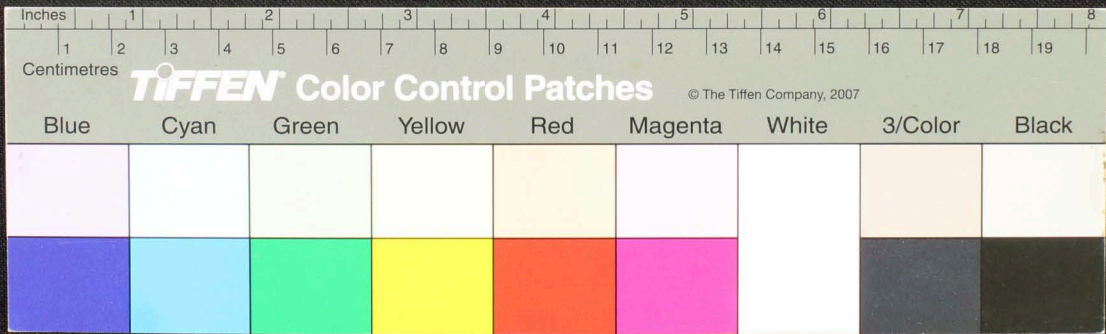
Handwritten Tamil script on a palm leaf manuscript. The text is arranged in approximately 12 horizontal lines across the length of the leaf. Two circular holes are visible, which were traditionally used for threading a cord to bind multiple leaves together into a book format. The script is densely packed and appears to be a form of classical or historical Tamil.



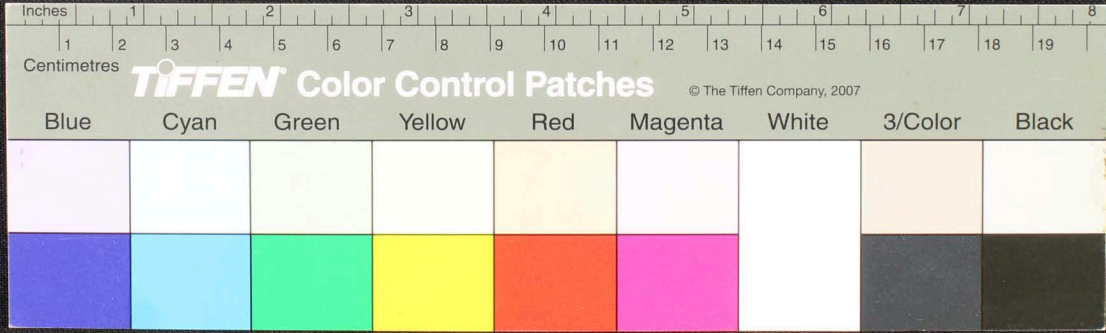
Handwritten Tamil script on a palm leaf manuscript. The text is densely packed and runs horizontally across the length of the leaf. There are two circular holes visible, which were traditionally used for threading a cord to bind multiple leaves together. The leaf shows signs of age, including some discoloration and wear at the edges.



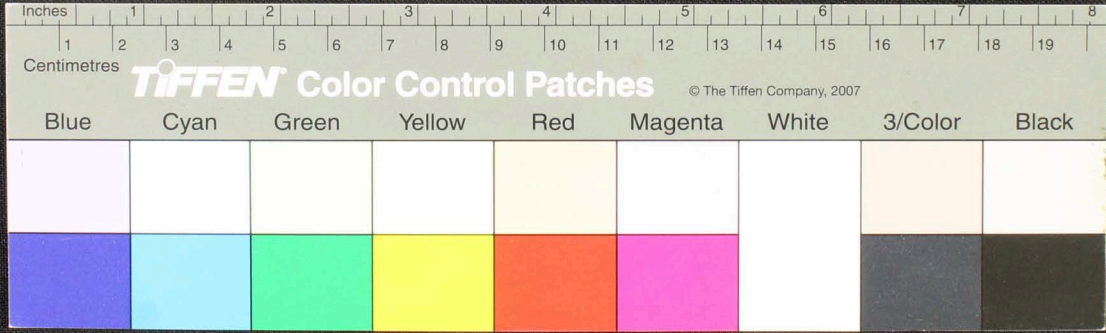
Handwritten Tamil script on a palm leaf manuscript. The text is densely packed in approximately 12 horizontal lines across the length of the leaf. There are two prominent circular holes, likely from a traditional string binding. The leaf shows signs of age, including some staining and fraying at the right edge.



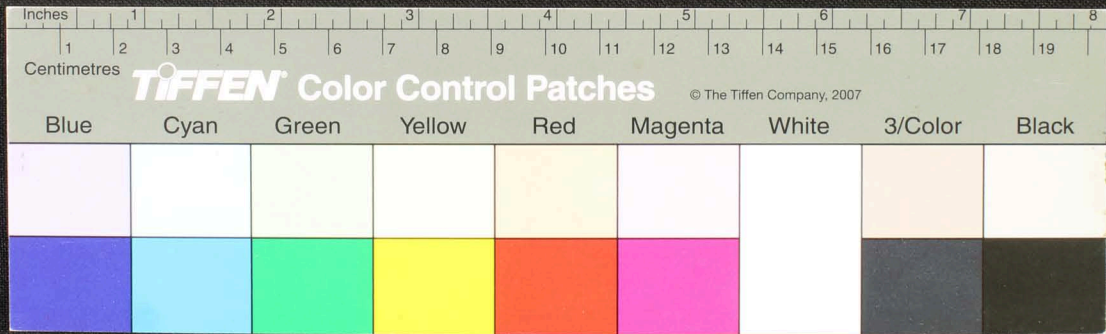
Handwritten Tamil script on a palm leaf manuscript. The text is densely packed and spans the length of the leaf. Two circular holes are visible, which were traditionally used for threading a cord to bind multiple leaves together into a book format. The script is written in a traditional style, characteristic of historical Tamil manuscripts.



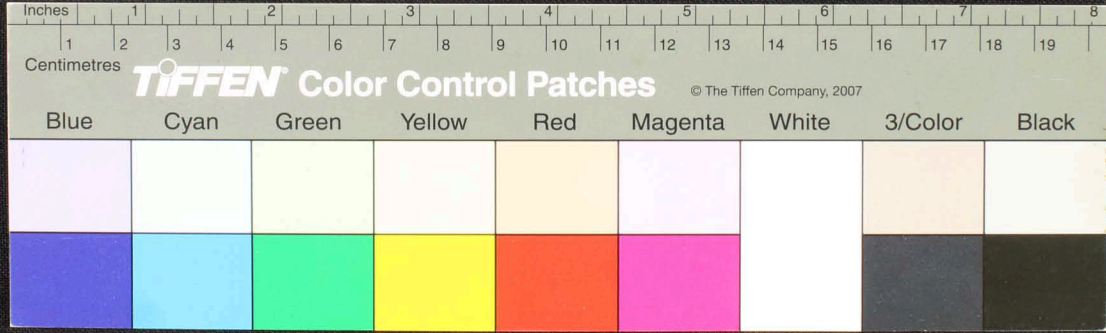
Handwritten Tamil script on a palm leaf manuscript. The text is densely packed and spans the length of the leaf. Two circular holes are visible, which were traditionally used for threading a cord to bind multiple leaves together into a book format. The script is written in a traditional style, with clear letterforms and consistent spacing.



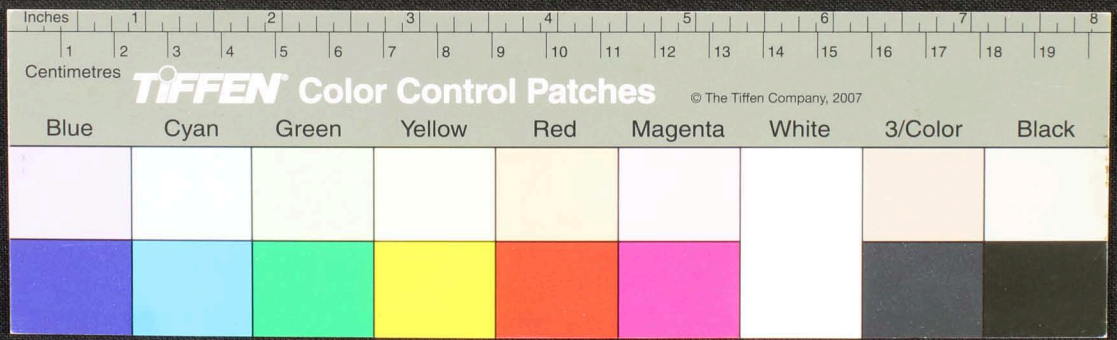
Handwritten Tamil script on a palm leaf manuscript. The text is densely packed and runs horizontally across the length of the leaf. There are two circular holes visible, which were traditionally used for threading a cord to bind multiple leaves together into a book format.



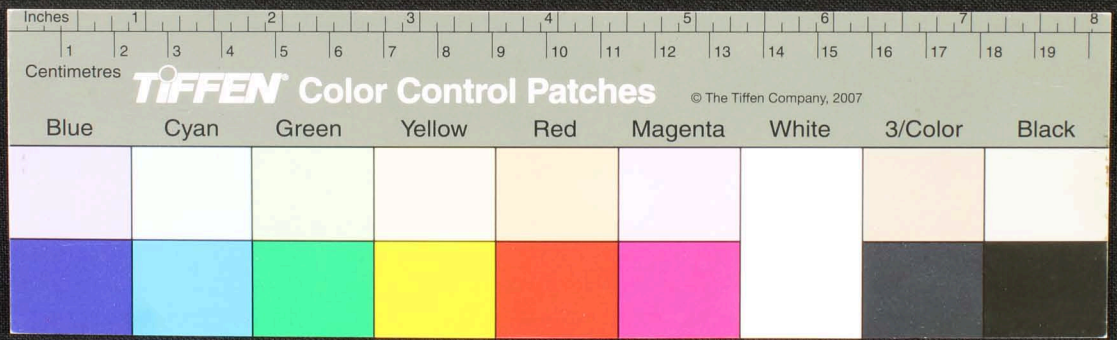
Handwritten Tamil script on a palm leaf manuscript. The text is densely packed and runs horizontally across the length of the leaf. There are two circular holes visible, which were traditionally used for threading a cord to bind multiple leaves together into a book format.



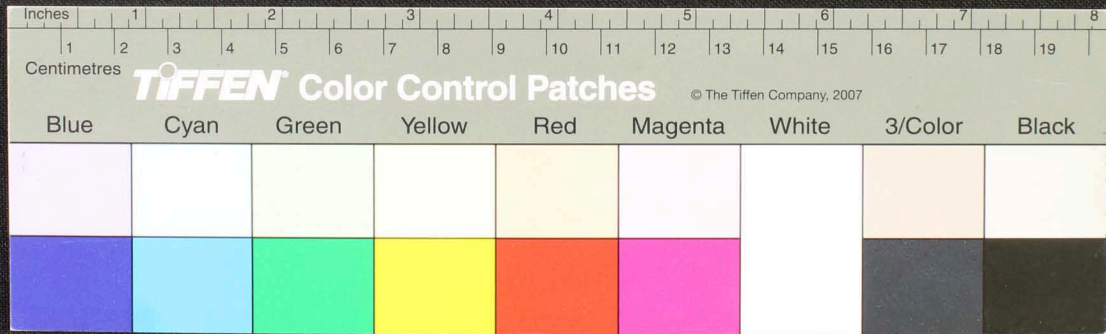
Handwritten Tamil script on a palm leaf manuscript. The text is arranged in approximately 12 horizontal lines across the length of the leaf. Two circular holes are visible, which were traditionally used for threading a cord to bind multiple leaves together. The script is densely packed and appears to be a form of classical or historical Tamil.



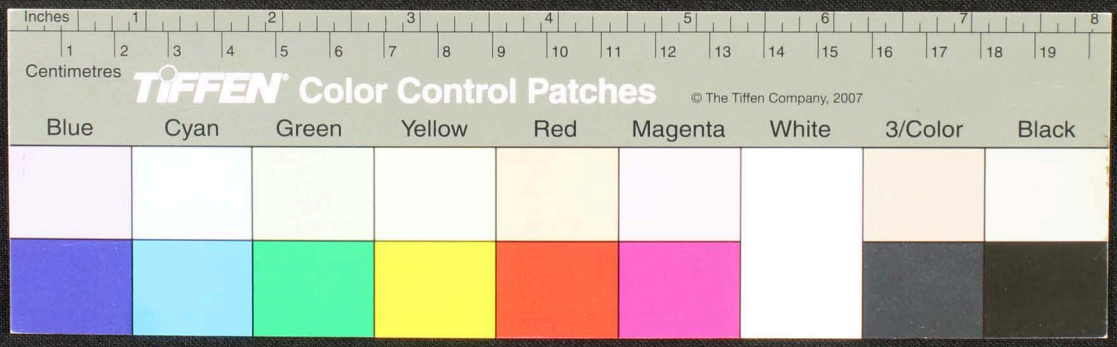
Handwritten Tamil script on a palm leaf manuscript. The text is arranged in approximately 10 horizontal lines across the length of the leaf. Two circular holes are visible, which were traditionally used for threading a cord to bind multiple leaves together. The script is densely packed and appears to be a form of classical or religious Tamil.



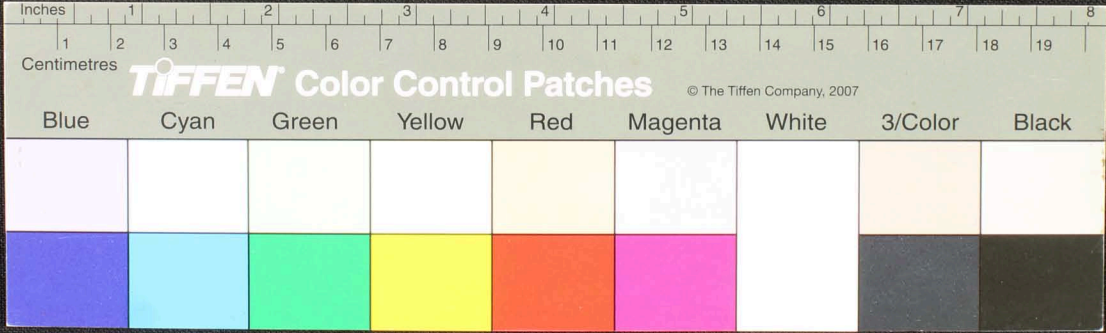
Handwritten Tamil script on a palm leaf manuscript. The text is densely packed and spans the length of the leaf. Two circular holes are visible, used for binding multiple leaves together. The script is written in a traditional style, with some characters appearing to be in a different script or dialect, possibly Grantha or a specific regional variant of Tamil.



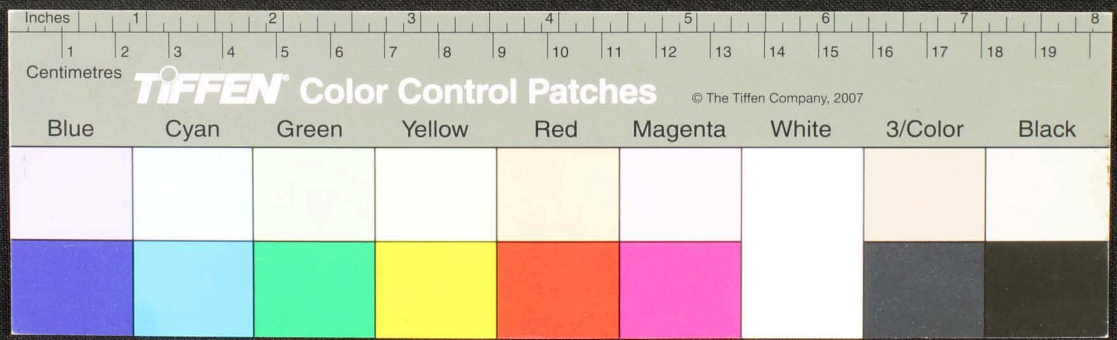
Handwritten text in Tamil script on a palm leaf manuscript. The text is densely packed and spans the length of the leaf. Two circular holes are visible, used for binding multiple leaves together.



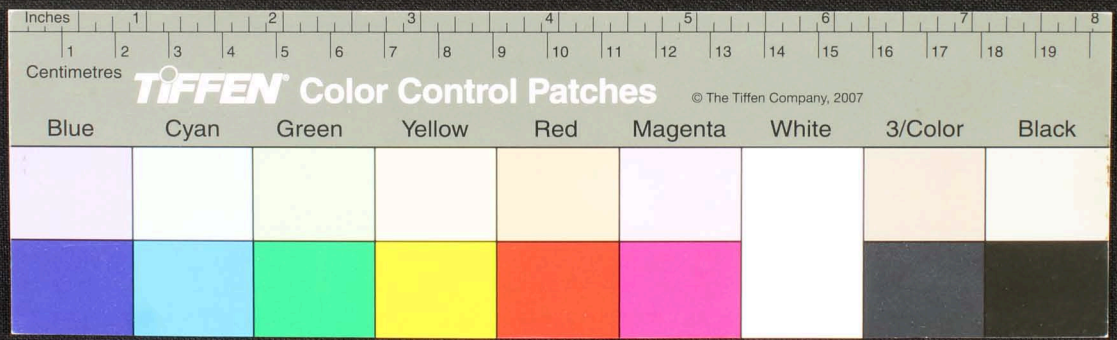
Handwritten Tamil script on a palm leaf manuscript. The text is densely packed and spans the length of the leaf. Two circular holes are visible, used for binding multiple leaves together. The script appears to be a form of classical Tamil, possibly containing religious or philosophical content.



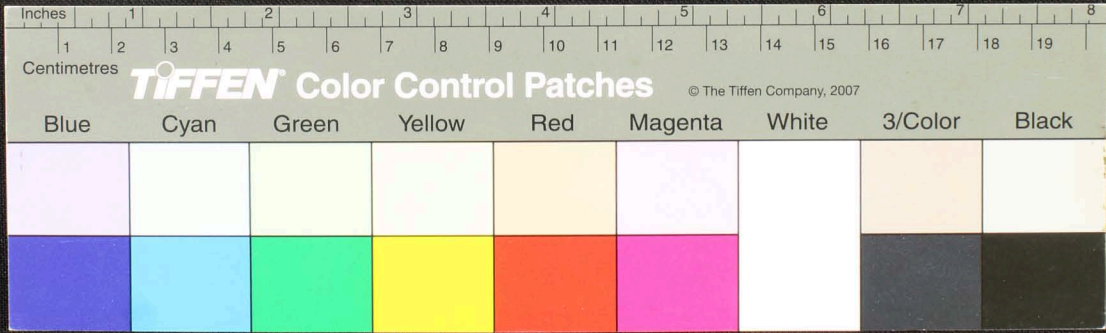
Handwritten text in Tamil script on a palm leaf manuscript. The text is densely packed and spans the length of the leaf. There are two circular holes visible, which were traditionally used for threading a cord to bind multiple leaves together. The leaf shows signs of age and wear, with some fraying at the edges.



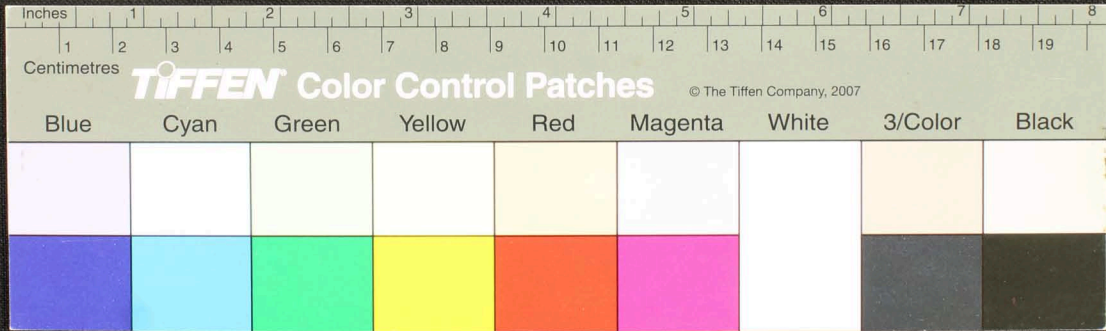
Handwritten Tamil script on a palm leaf manuscript. The text is densely packed and runs horizontally across the length of the leaf. Two circular holes are visible, which were traditionally used for threading a cord to bind multiple leaves together into a book format. The script appears to be a form of classical or historical Tamil, possibly containing religious or philosophical content.



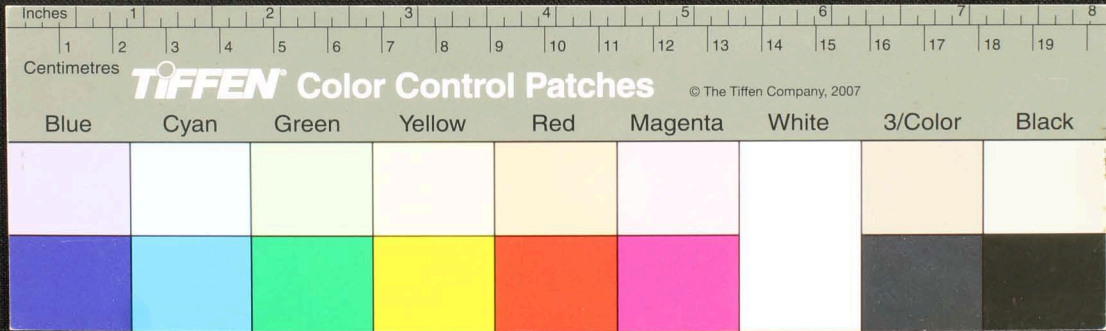
Handwritten Tamil script on a palm leaf manuscript. The text is arranged in approximately 10 horizontal lines across the length of the leaf. The script is finely etched into the surface of the dried leaf. Two circular holes are visible, which were traditionally used for threading a cord to bind multiple leaves together into a book format.



Handwritten Tamil script on a palm leaf manuscript. The text is densely packed and runs horizontally across the length of the leaf. There are two circular holes visible, which were traditionally used for threading a cord to bind multiple leaves together into a book format.

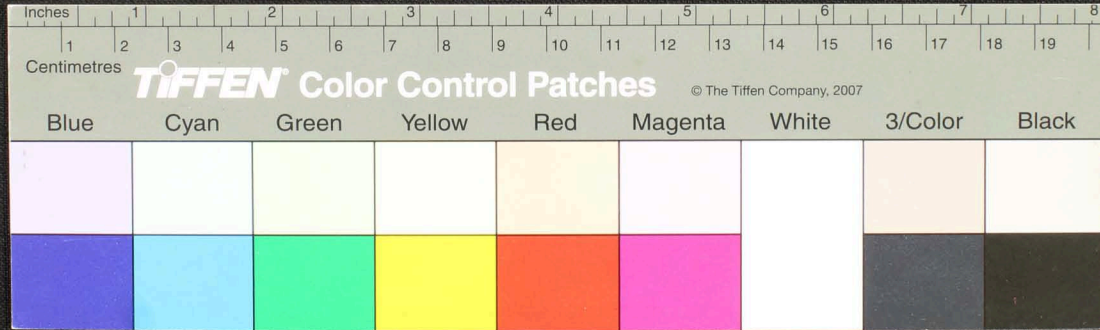


Handwritten Tamil script on a palm leaf manuscript. The text is arranged in approximately 10 horizontal lines across the length of the leaf. The script is densely packed and appears to be a form of classical Tamil. There are two circular holes visible on the leaf, which were traditionally used for threading a cord to bind multiple leaves together into a book format. The leaf shows signs of age, with some fraying and discoloration at the edges.

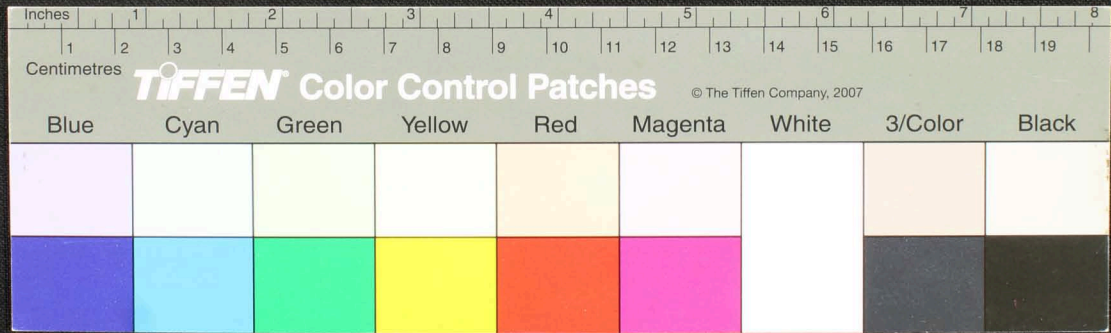


Handwritten Tamil script on a palm leaf manuscript. The text is densely packed and runs horizontally across the length of the leaf. There are two circular holes visible, which were traditionally used for threading a cord to bind multiple leaves together. The leaf shows signs of age and wear, with some fraying at the edges.

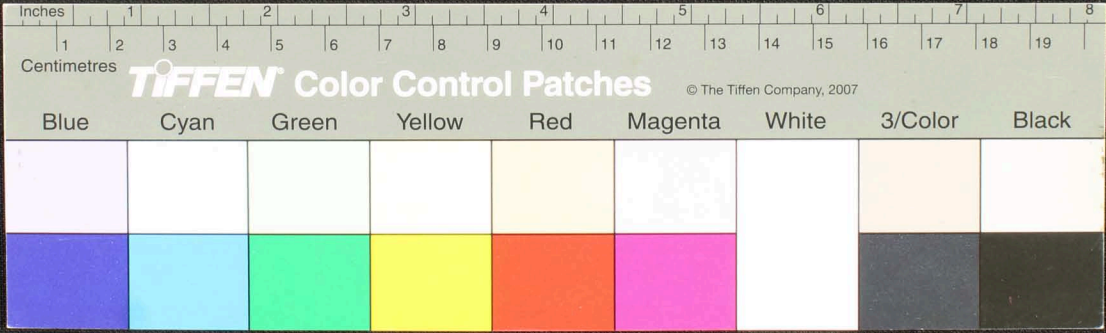
யது



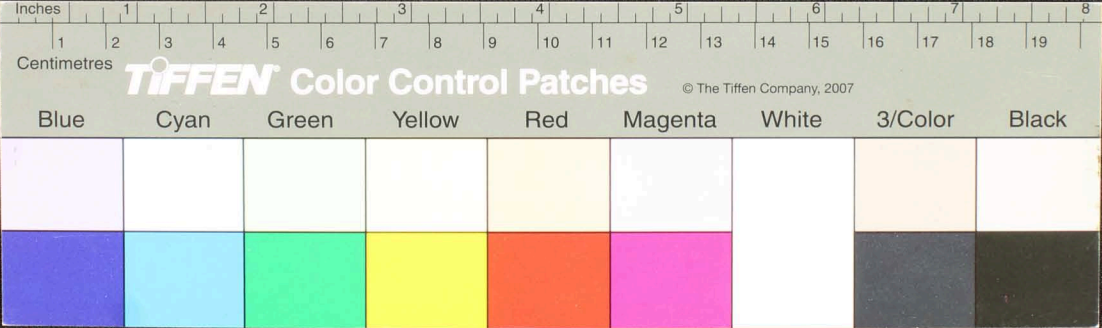
Handwritten Tamil script on a palm leaf manuscript. The text is arranged in approximately 10 horizontal lines across the length of the leaf. The script is densely packed and appears to be a form of classical Tamil. There are two prominent circular holes along the length of the leaf, which were traditionally used for threading a cord to bind multiple leaves together into a book format. The leaf shows signs of age, including some discoloration and wear at the edges.



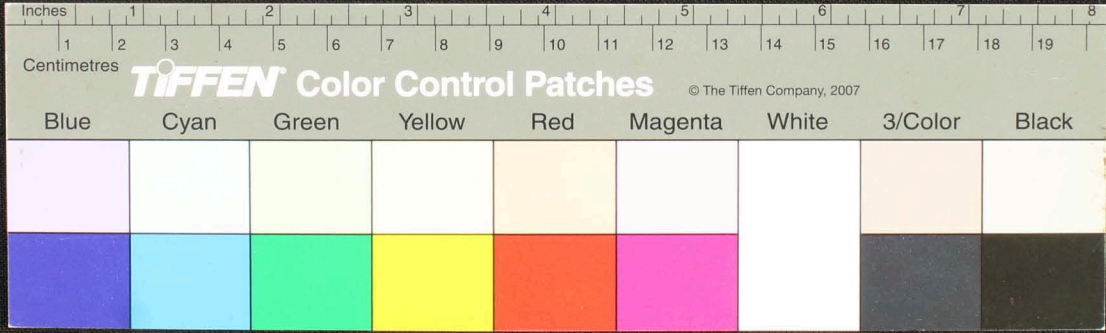
Handwritten Tamil script on a palm leaf manuscript. The text is densely packed and spans the length of the leaf. Two circular holes are visible, used for binding multiple leaves together. The script appears to be a form of classical or historical Tamil, possibly containing religious or philosophical content.



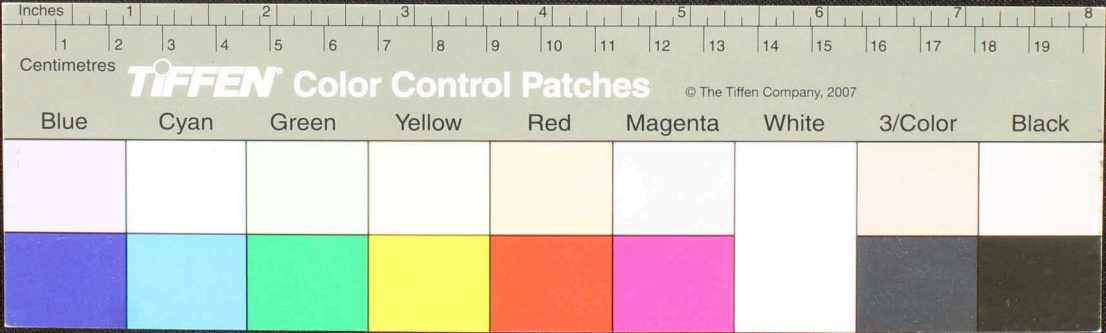
Handwritten Tamil script on a palm leaf manuscript. The text is densely packed and spans the length of the leaf. Two circular holes are visible, used for binding multiple leaves together. The script is written in a traditional style, with some characters appearing to be in a different script or dialect, possibly Grantha or a specific regional variant of Tamil.



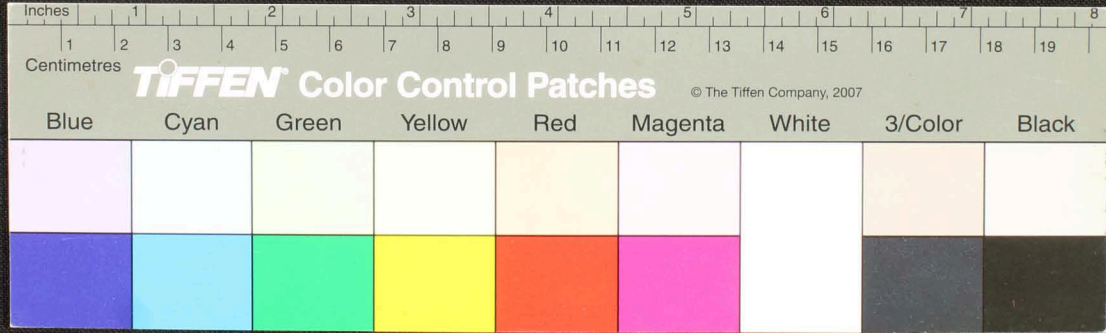
Handwritten Tamil script on a palm leaf manuscript. The text is densely packed and spans the length of the leaf. There are two circular holes visible, which were traditionally used for threading a cord to bind multiple leaves together. The script is written in a traditional style with dark ink on the natural yellowish-brown surface of the leaf.



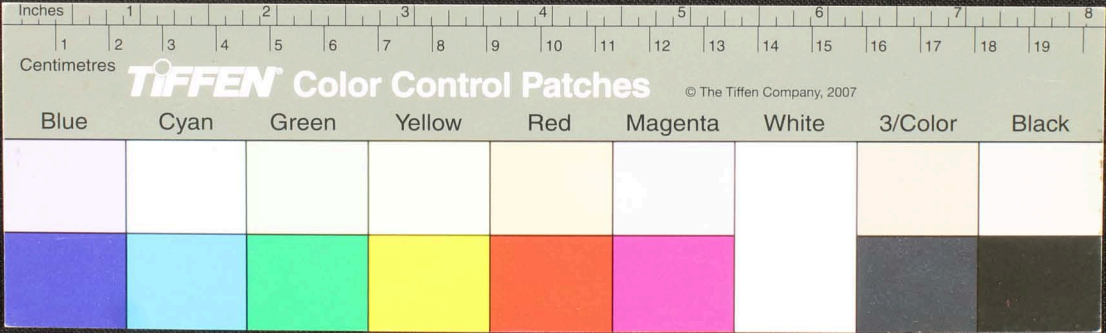
Handwritten text in Tamil script on a palm leaf manuscript. The text is arranged in approximately 10 horizontal lines. The script is dense and characteristic of traditional Tamil inscriptions. There are two circular holes visible on the leaf, which were used for threading a cord to bind multiple leaves together. The leaf shows signs of age, including some staining and wear at the edges.



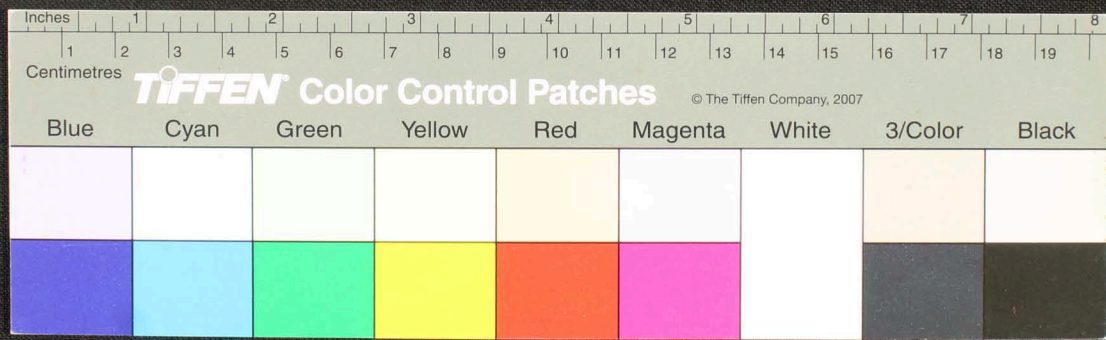
Handwritten Tamil script on a palm leaf manuscript. The text is arranged in approximately 10 horizontal lines across the length of the leaf. The script is finely etched into the surface of the dried leaf. There are two distinct circular holes, likely from a traditional string-and-stick binding method. The leaf shows signs of age, including some discoloration and wear at the edges.



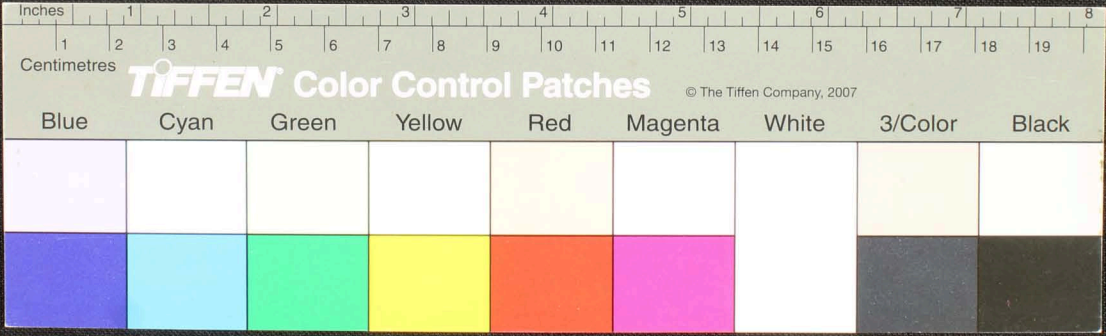
Handwritten text in Tamil script on a palm leaf manuscript. The text is arranged in approximately 10 horizontal lines across the length of the leaf. On the left side, there are marginal notes: 'கொண்டை' (Kondai) and 'கொண்டை' (Kondai) written vertically. The main text appears to be a historical or administrative record, mentioning various locations and events. Two circular holes are visible, used for binding multiple leaves together.



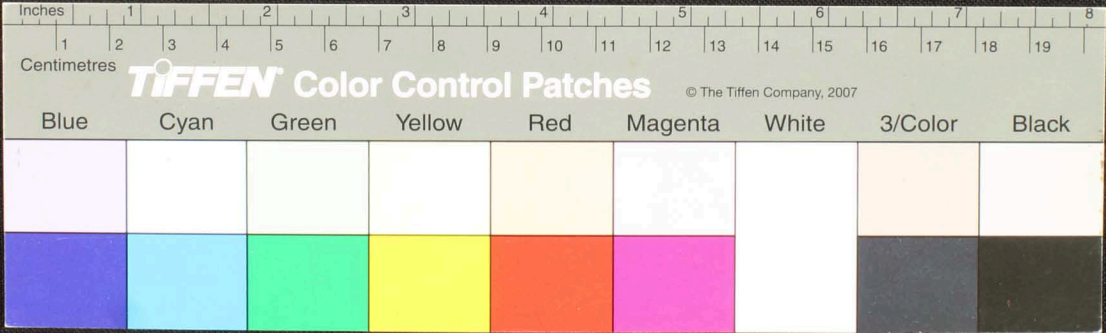
... மகிழ்ச்சி மிகுந்தவர்களை மகிழ்ச்சி மிகுந்தவர்களை மகிழ்ச்சி மிகுந்தவர்களை ...
 ... மகிழ்ச்சி மிகுந்தவர்களை மகிழ்ச்சி மிகுந்தவர்களை மகிழ்ச்சி மிகுந்தவர்களை ...
 ... மகிழ்ச்சி மிகுந்தவர்களை மகிழ்ச்சி மிகுந்தவர்களை மகிழ்ச்சி மிகுந்தவர்களை ...
 ... மகிழ்ச்சி மிகுந்தவர்களை மகிழ்ச்சி மிகுந்தவர்களை மகிழ்ச்சி மிகுந்தவர்களை ...
 ... மகிழ்ச்சி மிகுந்தவர்களை மகிழ்ச்சி மிகுந்தவர்களை மகிழ்ச்சி மிகுந்தவர்களை ...



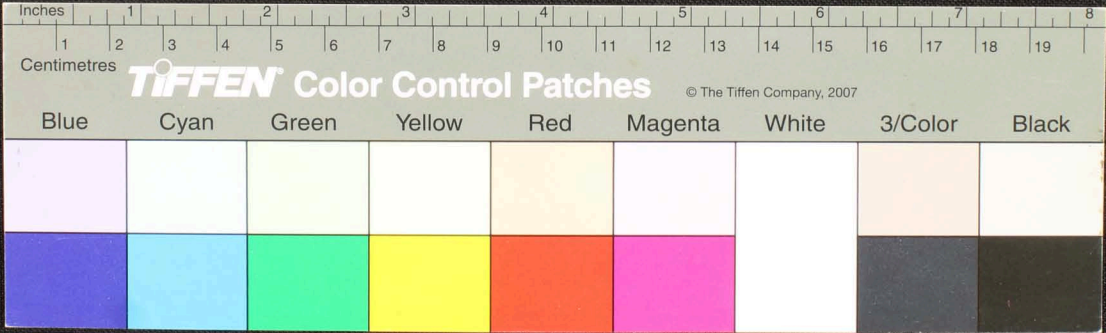
Handwritten Tamil script on a palm leaf manuscript. The text is arranged in approximately 10 horizontal lines across the length of the leaf. The script is finely etched into the surface of the dried leaf. There are two circular holes visible, which were traditionally used for threading a cord to bind multiple leaves together into a book format.



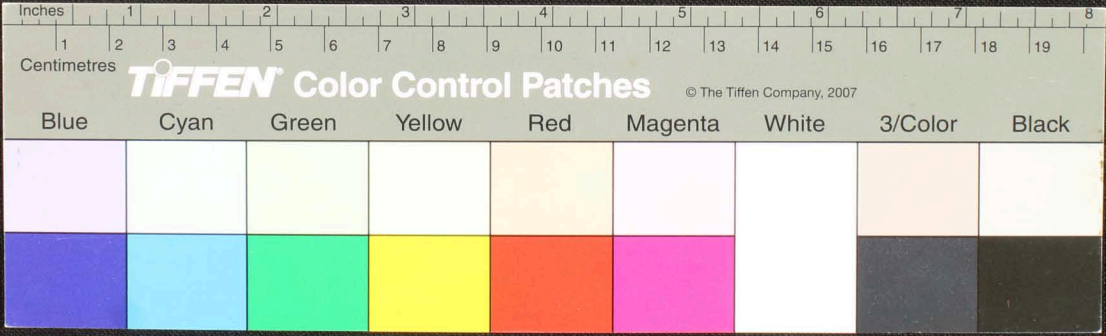
Handwritten text in Tamil script on a palm leaf manuscript. The text is arranged in approximately 10 horizontal lines across the length of the leaf. The script is finely etched into the surface of the dried leaf. There are two circular holes visible, which were traditionally used for threading a cord to bind multiple leaves together into a book format.



Handwritten text in Tamil script on a palm leaf manuscript. The text is arranged in approximately 10 horizontal lines across the length of the leaf. The script is dense and characteristic of traditional Tamil inscriptions on palm leaves. There are two circular holes visible on the leaf, which were traditionally used for threading a cord to bind multiple leaves together into a book format.

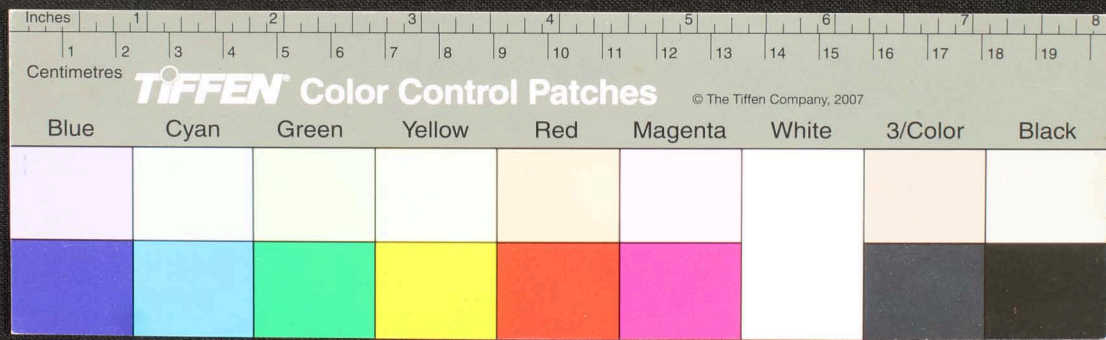


Handwritten text in Tamil script on a palm leaf manuscript. The text is arranged in approximately 10 horizontal lines. On the left side, there are two small inscriptions: 'செ' and 'செய்யுள் 10'. The script is densely packed and appears to be a form of classical or religious Tamil.

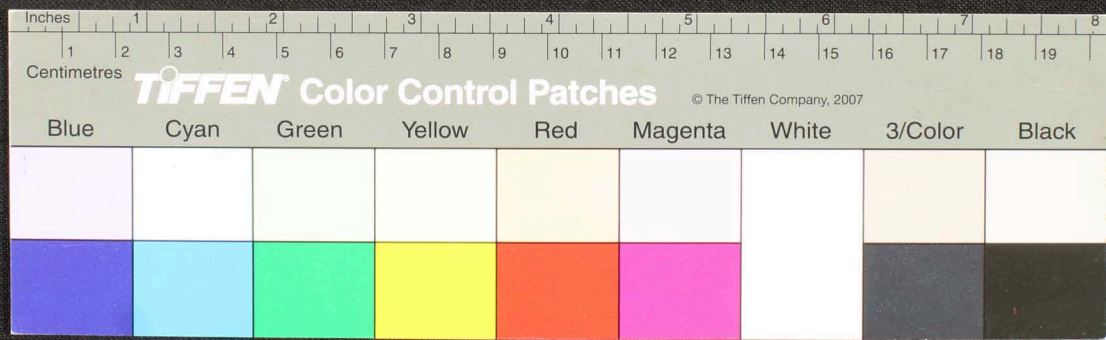


Handwritten text in Tamil script on a palm leaf manuscript. The text is arranged in approximately 10 horizontal lines across the length of the leaf. The script is finely etched into the surface of the dried leaf. There are two circular holes visible, which were traditionally used for threading a cord to bind multiple leaves together into a book format.

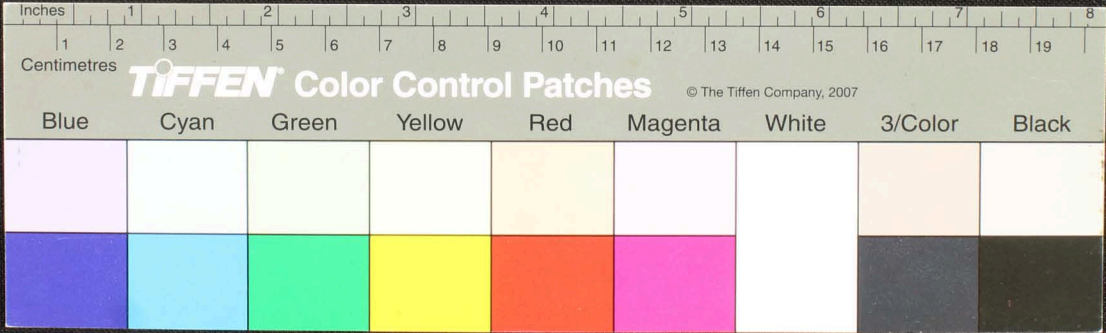
Handwritten notes in Tamil script, located in the upper left corner of the leaf. The text is written in a smaller, more compact script compared to the main body of the leaf.



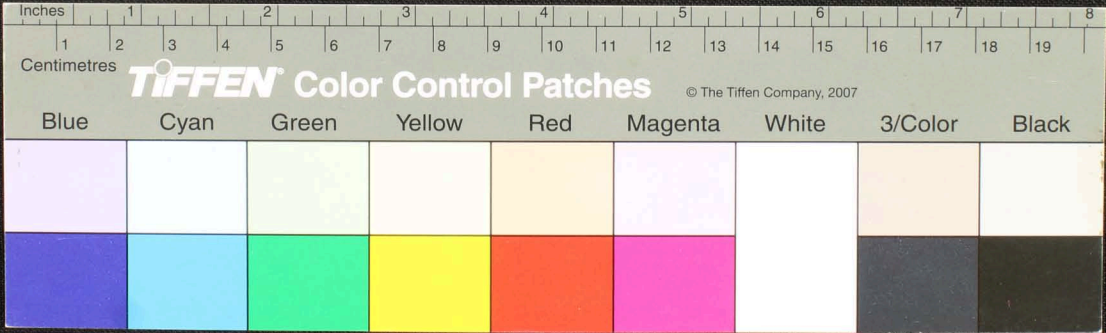
Handwritten text in Tamil script on a palm leaf manuscript. The text is arranged in approximately 10 horizontal lines across the length of the leaf. There are two circular holes visible, which were traditionally used for threading a cord to bind multiple leaves together. The script is finely etched into the surface of the dried leaf.



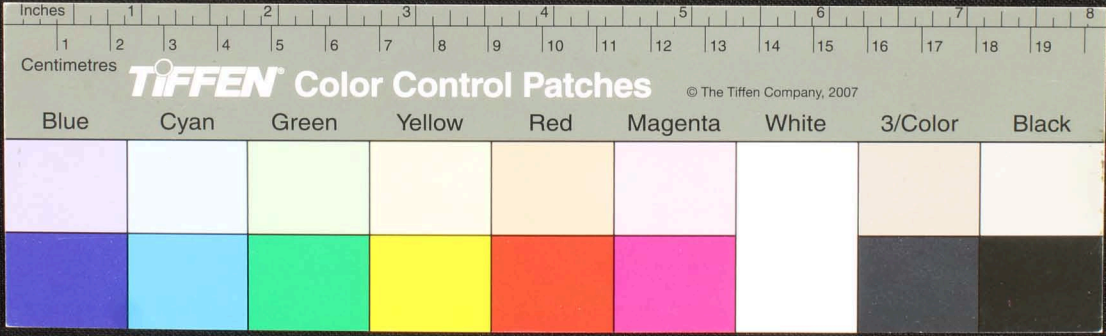
Handwritten Tamil script on a palm leaf manuscript. The text is arranged in approximately 10 horizontal lines across the length of the leaf. Two circular holes are visible, which were traditionally used for threading a cord to bind multiple leaves together. The script is finely etched into the surface of the dried leaf.



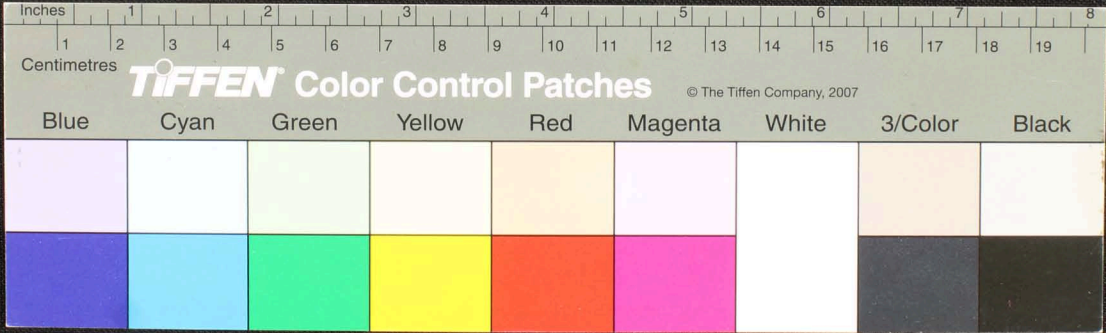
Handwritten Tamil script on a palm leaf manuscript. The text is arranged in approximately 10 horizontal lines across the length of the leaf. The script is finely etched into the surface of the dried leaf. Two circular holes are visible, which were traditionally used for threading a cord to bind multiple leaves together into a book format.



Handwritten text in Tamil script on a palm leaf manuscript. The text is arranged in approximately 10 horizontal lines. On the left side, there are two lines of text: "செய்திருக்கிற" and "செய்திருக்கிற". The main body of text is densely packed and covers most of the leaf's width. There are two circular holes visible on the leaf, which were traditionally used for threading a cord to bind multiple leaves together into a book format.



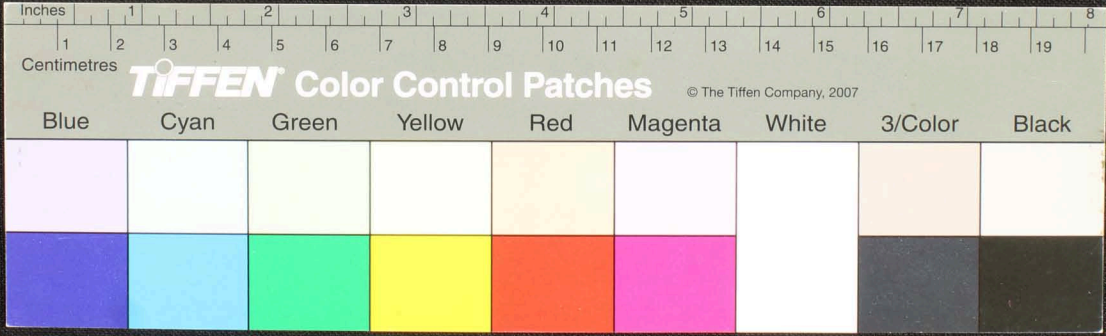
Handwritten text in Tamil script on a palm leaf manuscript. The text is arranged in approximately 10 horizontal lines across the length of the leaf. The script is dense and characteristic of traditional South Indian manuscripts. There are two circular holes visible on the leaf, which were traditionally used for threading a cord to bind multiple leaves together into a book format.



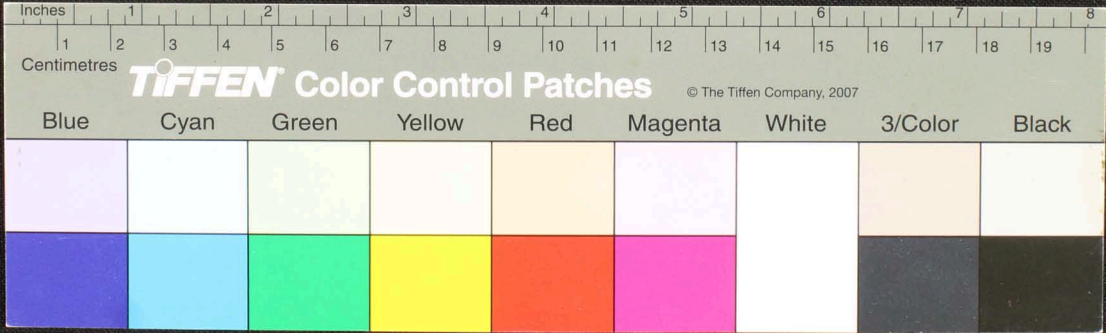
Handwritten text in Tamil script on a palm leaf manuscript. The text is arranged in approximately 10 horizontal lines across the length of the leaf. The script is finely etched into the surface of the dried leaf. There are two circular holes visible, which were traditionally used for threading a cord to bind multiple leaves together into a book format.

சுருதி

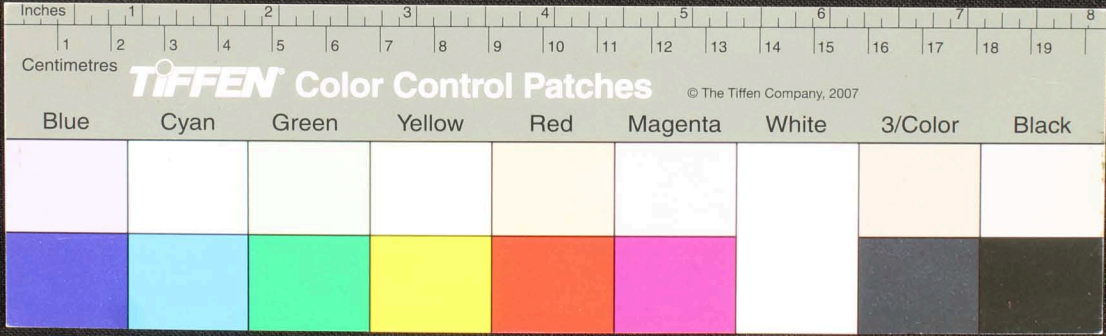
சுருதி



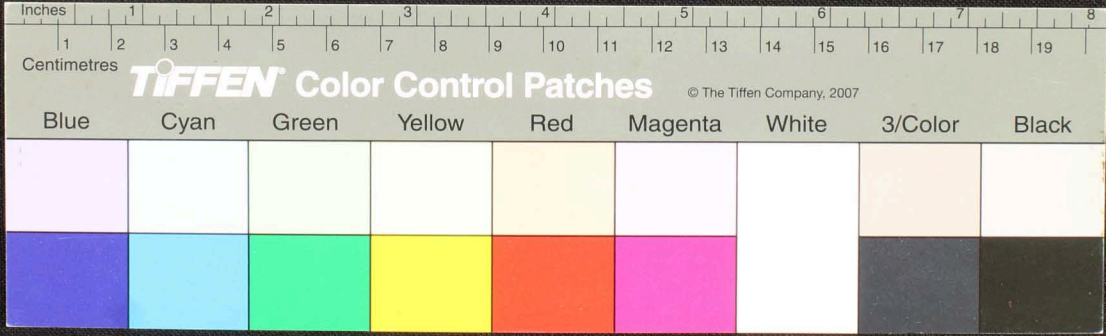
Handwritten Tamil script on a palm leaf manuscript. The text is arranged in approximately 10 horizontal lines across the length of the leaf. On the left side, there are three vertical labels: 'மறைந்திரு' (Maraientiru), 'சூழ' (Suzhal), and '777'. The script is finely etched into the natural texture of the dried leaf.



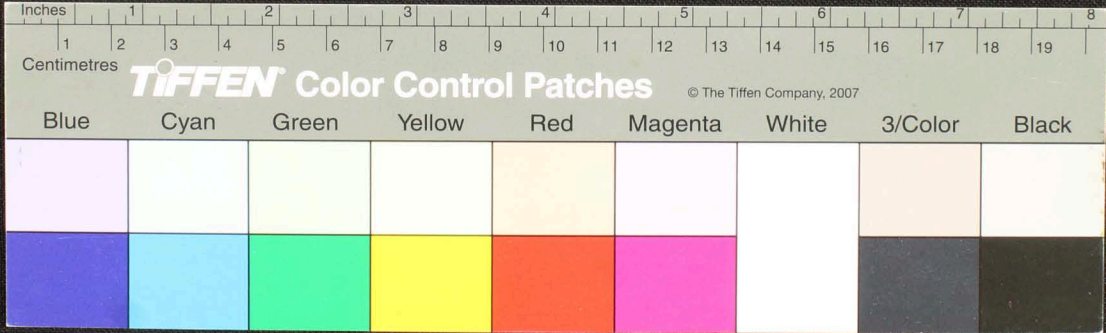
Handwritten text in Tamil script on a palm leaf manuscript. The text is arranged in approximately five horizontal lines across the length of the leaf. There are two distinct circular holes or indentations along the bottom edge of the leaf, likely for binding.



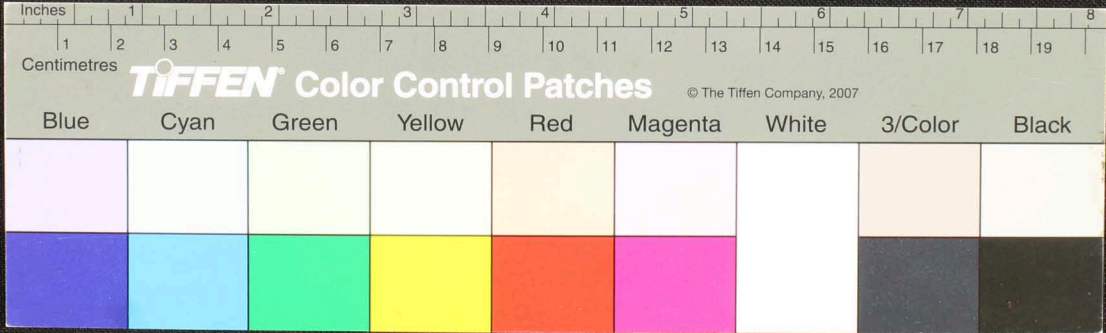
Handwritten Tamil script on a palm leaf manuscript. The text is arranged in approximately 10 horizontal lines across the length of the leaf. On the left side, there are three lines of text that appear to be a title or a specific reference, possibly including the name of the scribe or the subject of the text. The main body of text is densely packed and covers most of the leaf's surface.



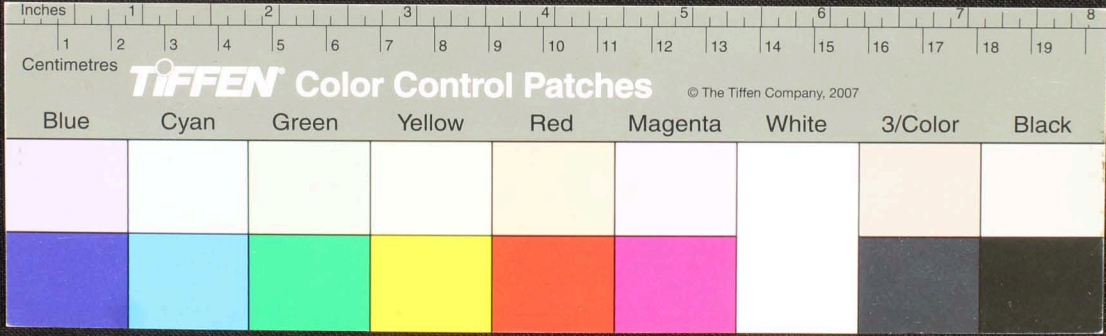
Handwritten text in Tamil script on a palm leaf manuscript. The text is arranged in approximately 10 horizontal lines. On the left side, there are marginal notes: 'செய்து' (Seithu) and 'செய்து' (Seithu) written vertically. The main text contains several lines of script, with some characters appearing to be in a different script or dialect, possibly including religious or philosophical content. There are two distinct circular holes or indentations in the leaf, one near the left edge and one near the right edge.



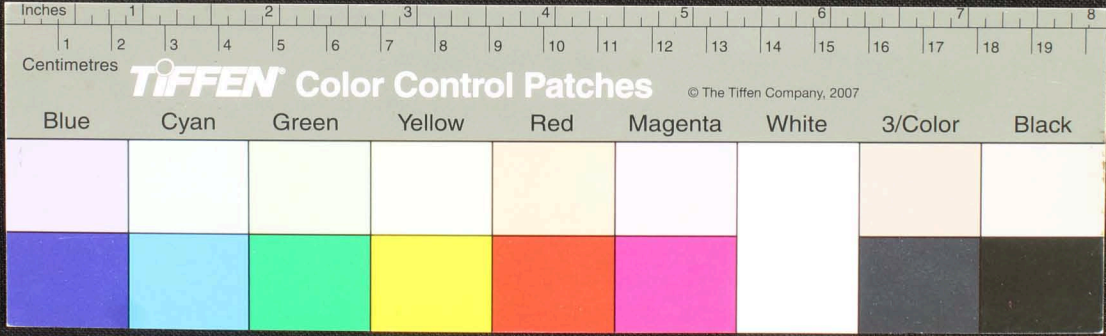
Handwritten text in Tamil script on a palm leaf manuscript. The text is arranged in approximately 10 horizontal lines across the length of the leaf. Two circular holes are visible, which were traditionally used for threading a cord to bind multiple leaves together. The script is finely etched into the surface of the dried leaf.



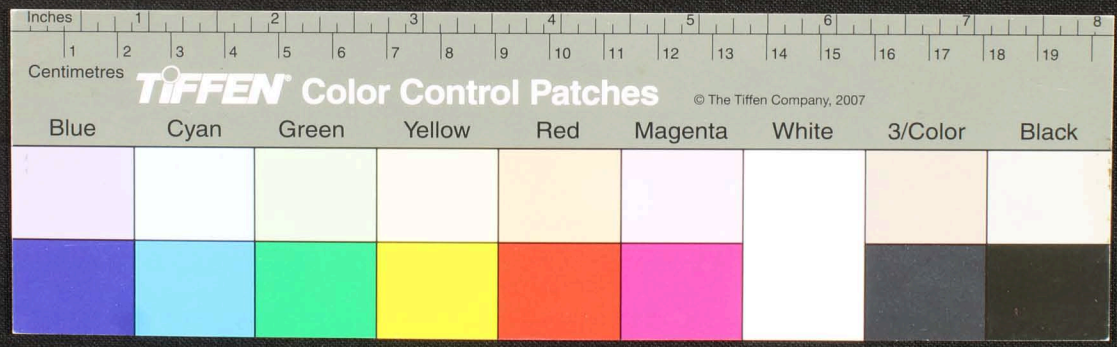
Handwritten text in Tamil script on a palm leaf manuscript. The text is arranged in approximately 10 horizontal lines. On the left side, there are marginal notes: "செய்து" (written vertically), "177", and "18/19/20". The main body of text contains several lines of script, with some characters appearing to be in a different script or dialect, possibly including religious or philosophical content. There are three distinct circular holes along the length of the leaf, which were traditionally used for threading a cord to bind multiple leaves together.



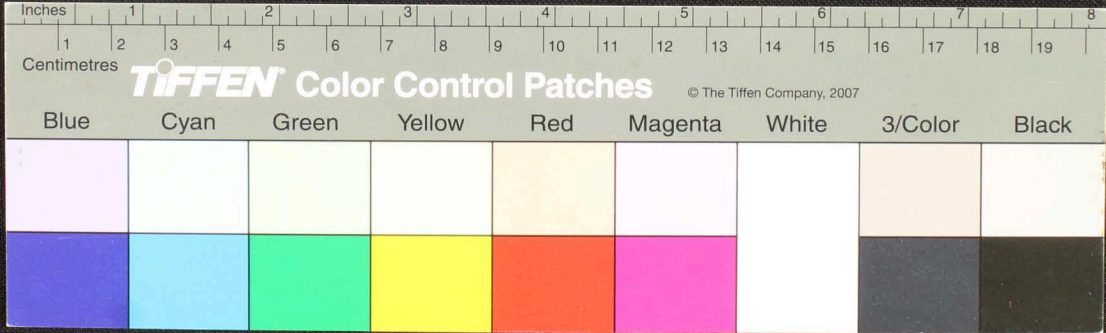
Handwritten Tamil script on a palm leaf manuscript. The text is arranged in approximately 10 horizontal lines. The script is finely etched into the surface of the dried leaf. There are several dark circular spots, likely due to insect damage or mold, scattered across the leaf. The leaf is slightly curved and shows signs of age and wear.



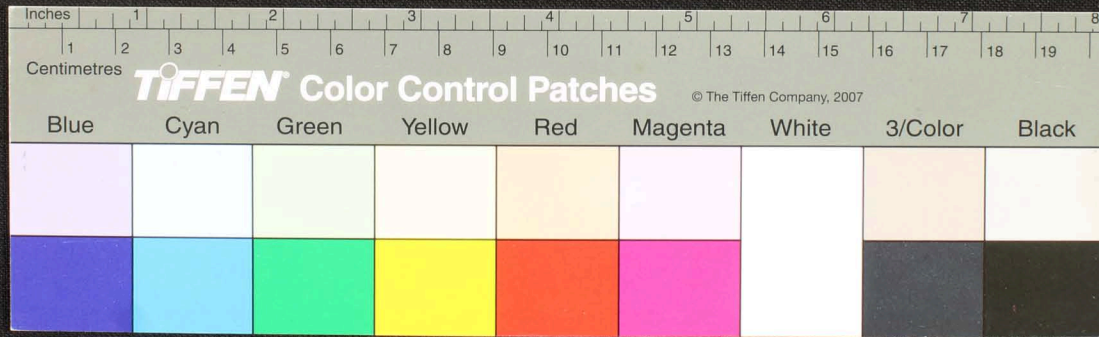
Handwritten Tamil script on a palm leaf manuscript. The text is arranged in approximately 10 horizontal lines. On the left side, there are several vertical labels: 'சுருதி', 'சுருதி', 'சுருதி', 'சுருதி', 'சுருதி', 'சுருதி', 'சுருதி', 'சுருதி', 'சுருதி', 'சுருதி'. The main body of text contains several lines of script, with two circular holes visible, likely from a traditional binding method.



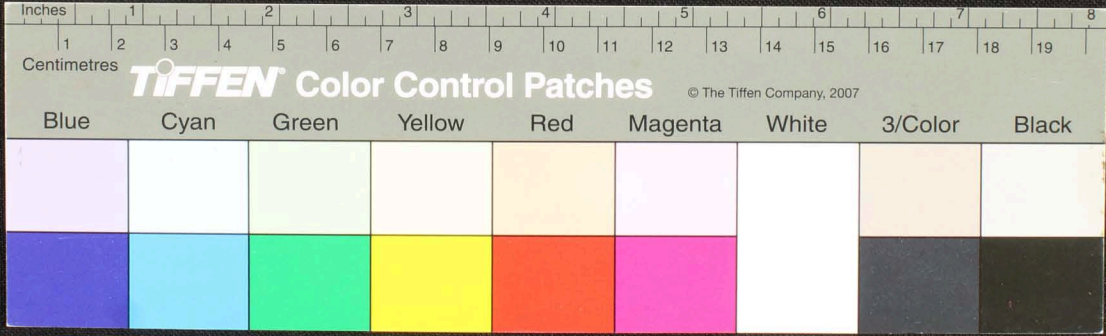
Handwritten text in Tamil script on a palm leaf manuscript. The text is densely packed and spans the length of the leaf. Two circular holes are visible, used for binding multiple leaves together.



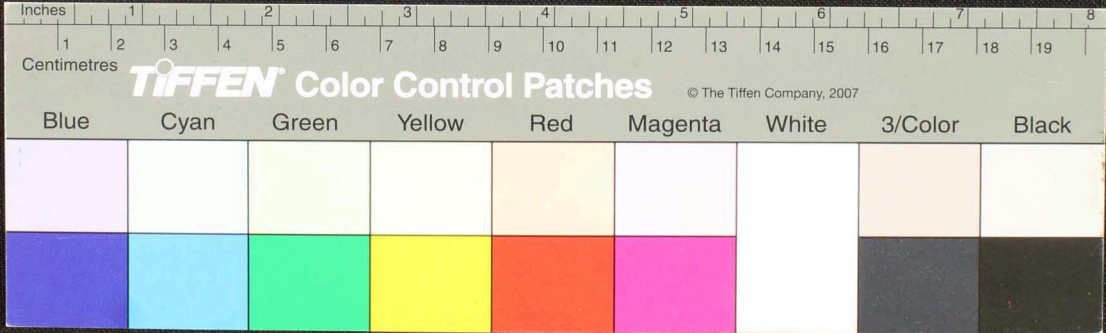
Handwritten text in Tamil script on a palm leaf manuscript. The text is arranged in several horizontal lines across the length of the leaf. There are two circular holes visible, which are traditional for threading a cord to bind multiple leaves together into a book format.



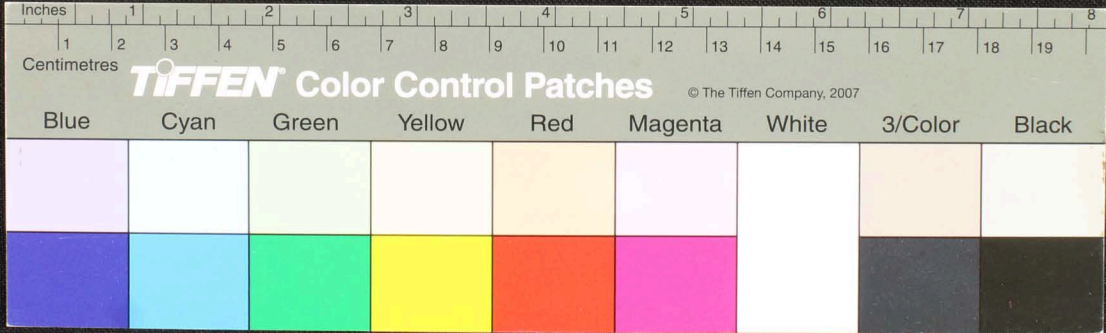
சிவசுந்தரமயம்... கருவியுள்ளவர்கள்... இராமபட்டினம்... கருவியுள்ளவர்கள்... மட... கருவியுள்ளவர்கள்...
 மாரபலங்கம்... கருவியுள்ளவர்கள்... கருவியுள்ளவர்கள்... கருவியுள்ளவர்கள்... கருவியுள்ளவர்கள்...
 கருவியுள்ளவர்கள்... கருவியுள்ளவர்கள்... கருவியுள்ளவர்கள்... கருவியுள்ளவர்கள்... கருவியுள்ளவர்கள்...



Handwritten Tamil script on a palm leaf manuscript. The text is arranged in approximately 10 horizontal lines across the length of the leaf. On the left side, there are marginal notes: 'சுருதிபாடு' (Srutipadu) and 'சுருதிபாடு' (Srutipadu) written vertically. The main body of text contains several lines of script, with some characters appearing to be in a different script or dialect, possibly indicating a specific religious or philosophical text. There are two circular holes visible on the leaf, which were traditionally used for threading a cord to bind multiple leaves together.



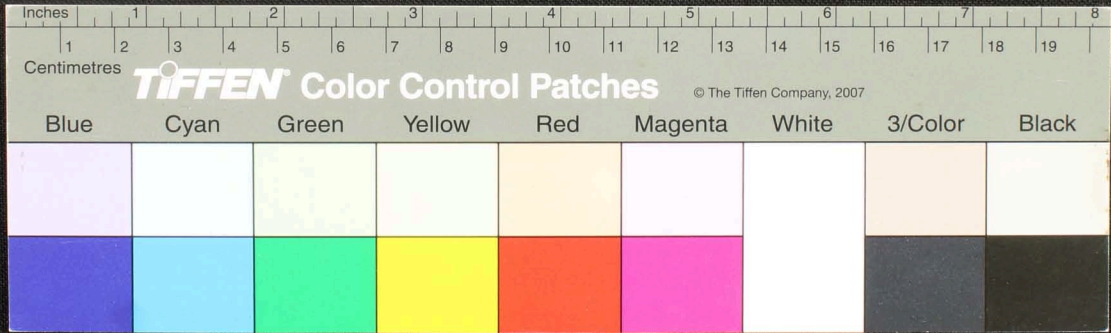
Handwritten Tamil script on a palm leaf manuscript. The text is arranged in approximately 10 horizontal lines across the length of the leaf. Two circular holes are visible, used for threading a cord to bind multiple leaves together. The script is finely etched into the surface of the dried leaf.



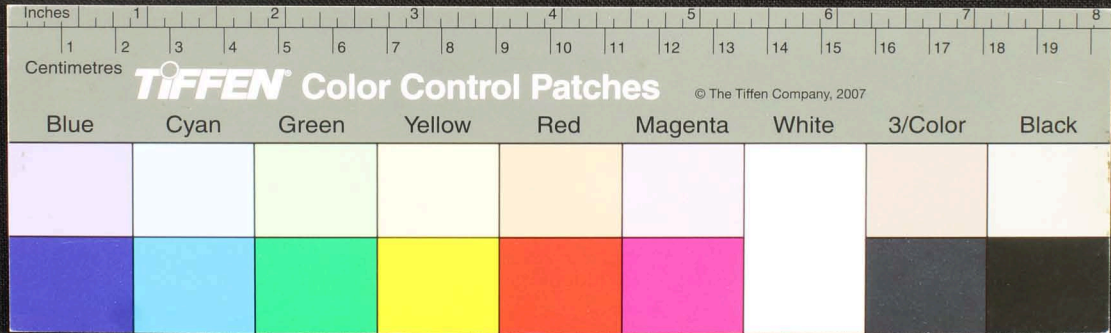
செல்லைய

செய

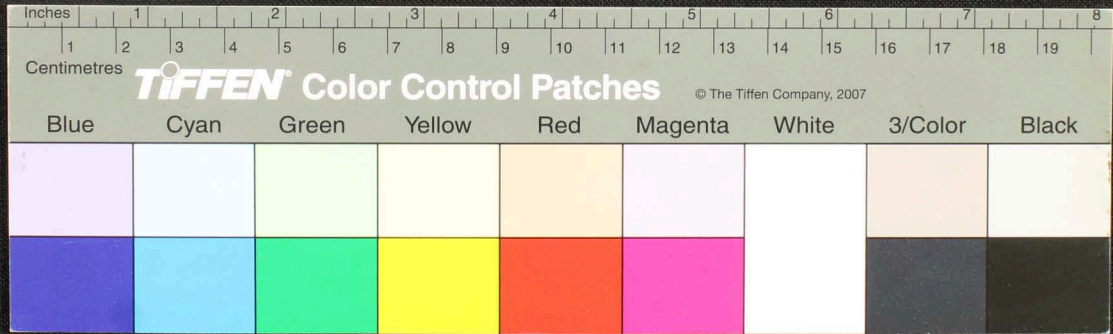
Handwritten Tamil script on a palm leaf manuscript strip.



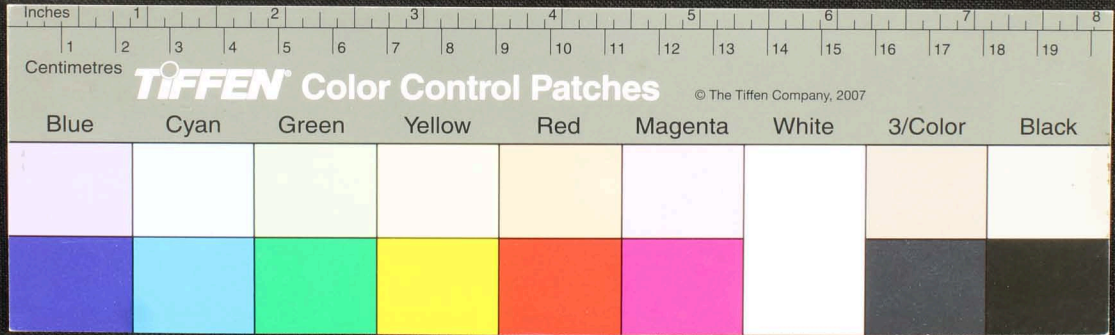
Handwritten text in Tamil script on a palm leaf manuscript. The text is arranged in approximately 10 horizontal lines across the length of the leaf. The script is finely etched into the surface of the dried leaf. The leaf shows signs of age, with some dark spots and irregular edges.



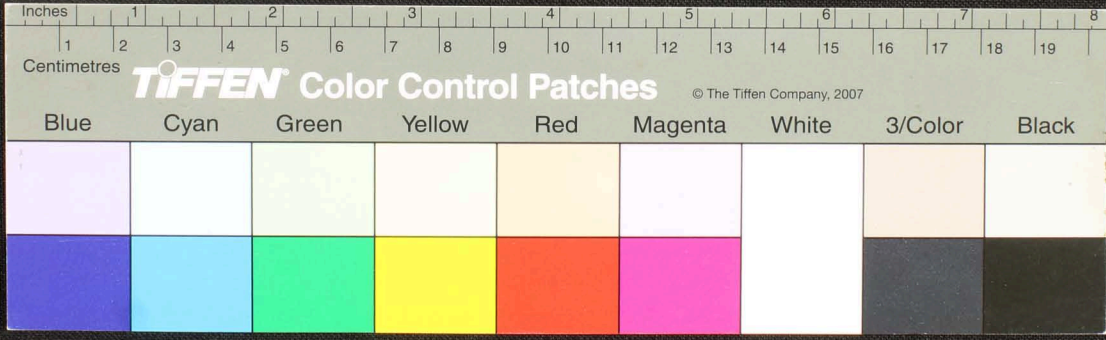
Handwritten Tamil script on a palm leaf manuscript. The text is arranged in approximately 10 horizontal lines across the length of the leaf. The script is finely etched into the surface of the dried leaf. Two circular holes are visible, which were traditionally used for threading a cord to bind multiple leaves together into a book format.



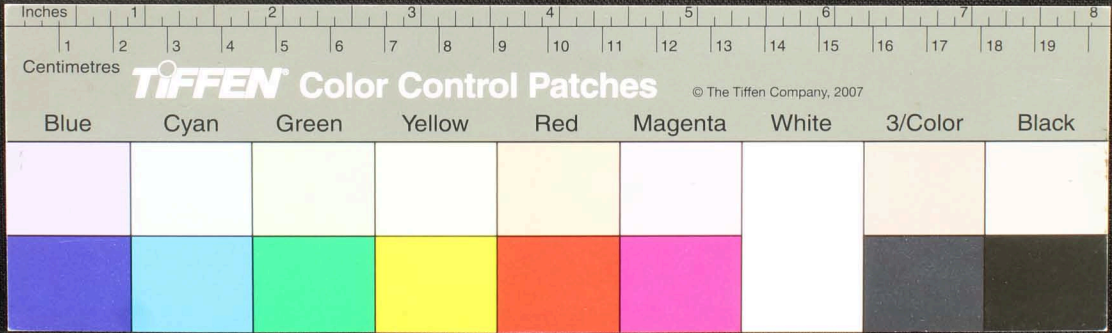
Handwritten Tamil script on a palm leaf manuscript. The text is arranged in approximately 10 horizontal lines. The script is finely etched into the surface of the dried leaf. There are two prominent circular holes, likely from a traditional string binding. The leaf shows signs of age and wear, with some fraying at the edges.



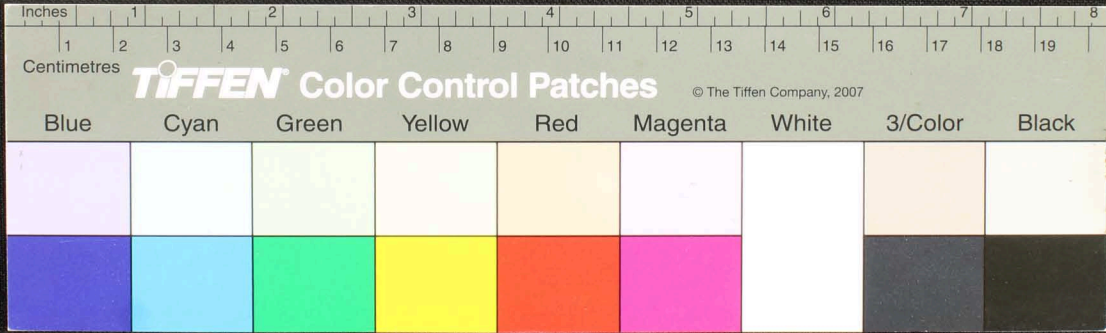
Handwritten Tamil script on a palm leaf manuscript. The text is arranged in approximately 12 horizontal lines. On the left side, there are two vertical inscriptions: 'இரண்டாம்' (Irandaṁ) and 'ஏழாம்' (Eằam), which likely denote the second and seventh chapters or sections of the text. The script is densely packed and written in a traditional style.



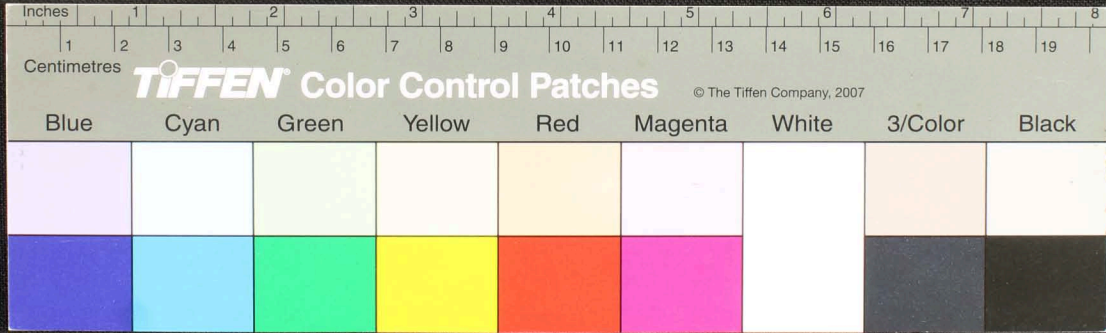
Handwritten Tamil script on a palm leaf manuscript. The text is arranged in approximately 10 horizontal lines. On the left side, there are several vertical annotations in smaller script, including the characters 'சுருதி', 'சுருதி', 'சுருதி', 'சுருதி', and 'சுருதி'. The main body of text contains several lines of prose in a traditional Tamil script.



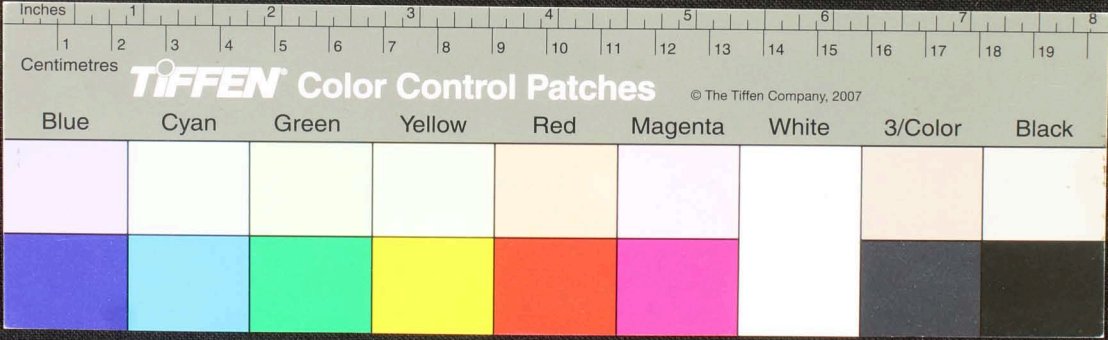
Handwritten Tamil script on a palm leaf manuscript. The text is arranged in approximately 10 horizontal lines. On the left side, there is a vertical label 'சூசிய' (Sūsiya) and 'உரைய' (Uraya) written in smaller characters. The main body of text consists of several lines of dense script, with some characters appearing to be in a different script or dialect, possibly indicating a specific religious or philosophical text. The leaf shows signs of age, including two circular holes and some staining.



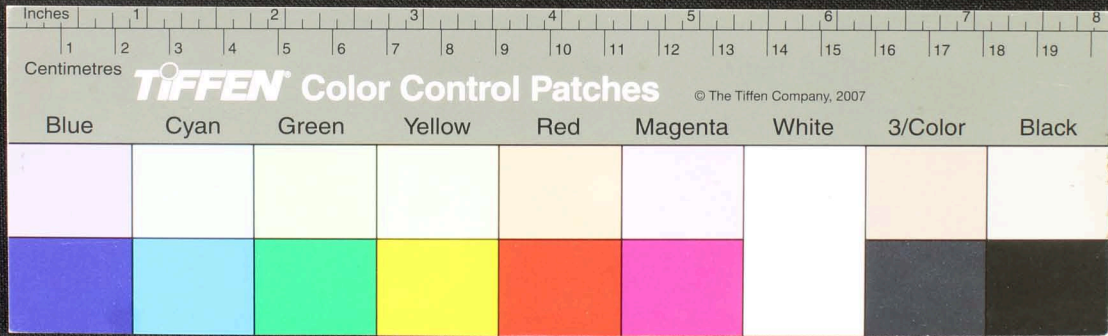
Handwritten Tamil script on a palm leaf manuscript. The text is arranged in approximately 10 horizontal lines across the length of the leaf. The script is finely etched into the surface of the dried leaf. Two circular holes are visible, which were traditionally used for threading a cord to bind multiple leaves together into a book format.



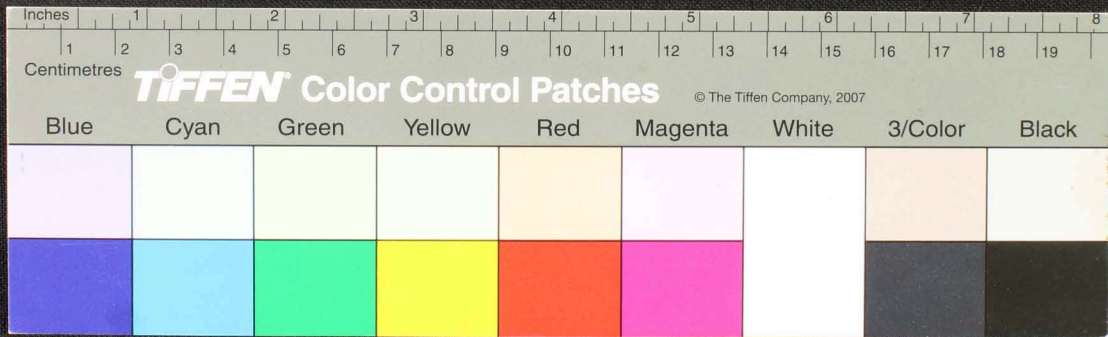
Handwritten Tamil script on a palm leaf manuscript. The text is arranged in approximately 10 horizontal lines. Two circular holes are visible, used for threading a cord to bind multiple leaves together. The script is densely packed and appears to be a form of classical Tamil.



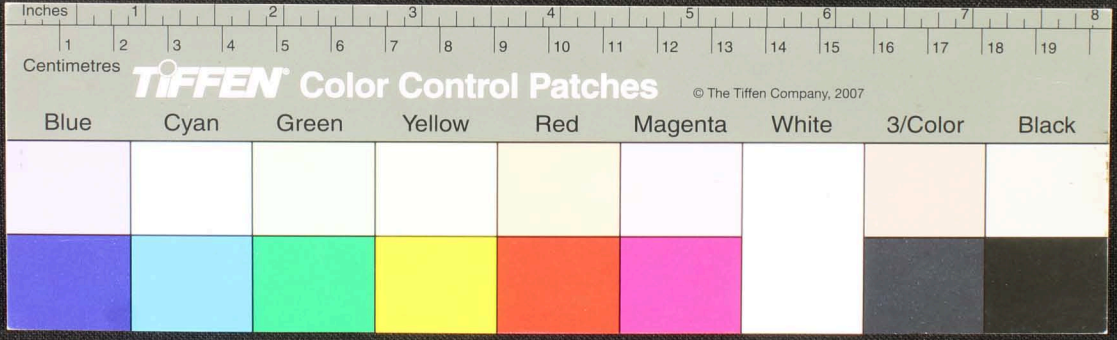
Handwritten Tamil script on a palm leaf manuscript. The text is arranged in approximately 10 horizontal lines across the length of the leaf. The script is finely etched into the surface of the dried leaf. The leaf shows signs of age, including some dark spots and irregular edges.



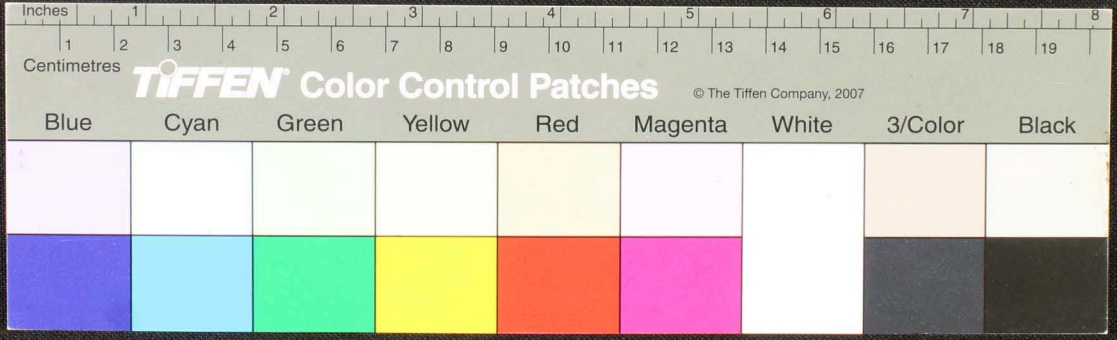
Handwritten Tamil script on a palm leaf manuscript. The text is arranged in approximately 10 horizontal lines across the length of the leaf. Two circular holes are visible, which were traditionally used for threading a cord to bind multiple leaves together. The script is finely etched into the surface of the dried leaf.



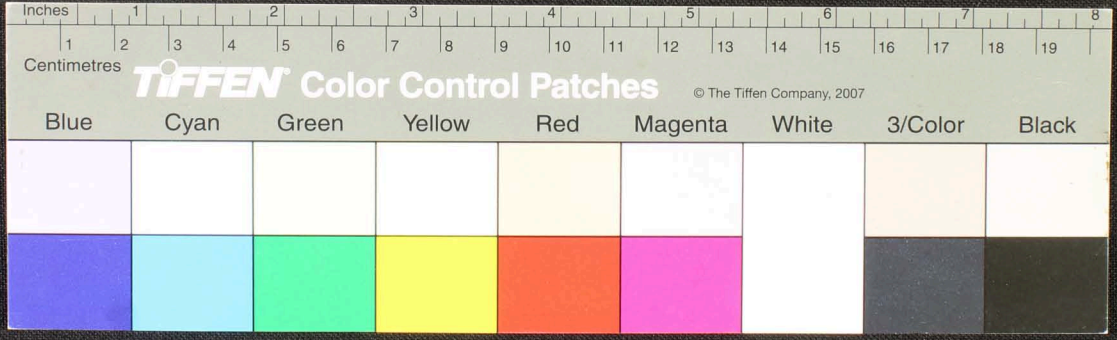
Handwritten Tamil script on a palm leaf manuscript. The text is arranged in approximately 10 horizontal lines across the length of the leaf. Two circular holes are visible, which were traditionally used for threading a cord to bind multiple leaves together. The script is finely etched into the surface of the dried leaf.



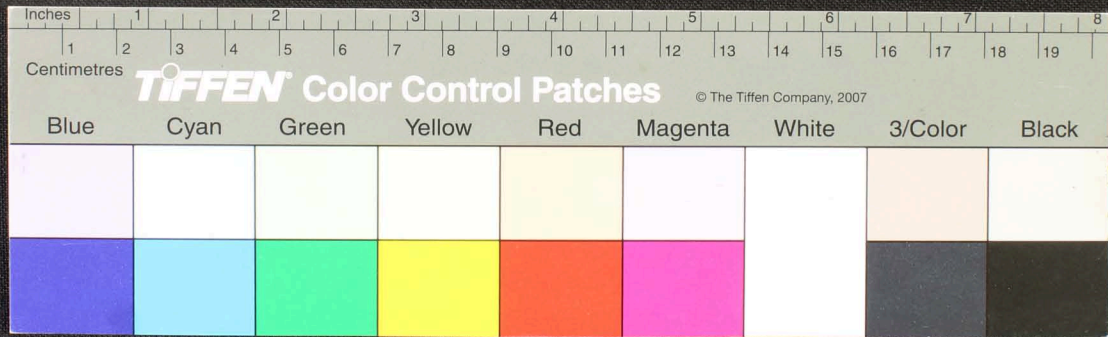
திருமயங்குண்டி...
 இவ்வாறு...
 உலகமெல்லாம்...
 விஷயம்...
 திருமயங்குண்டி...
 இவ்வாறு...
 உலகமெல்லாம்...
 விஷயம்...



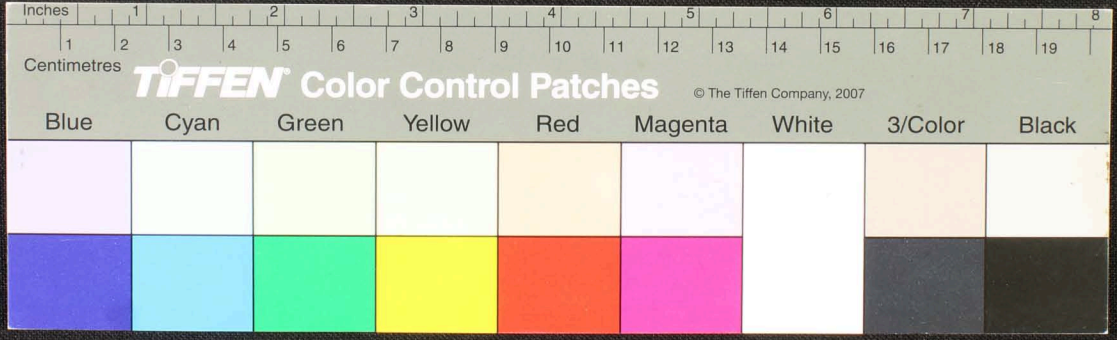
Handwritten Tamil script on a palm leaf manuscript. The text is arranged in approximately 10 horizontal lines across the length of the leaf. Two circular holes are visible, which were traditionally used for threading a cord to bind multiple leaves together into a book format. The script is finely etched into the surface of the dried leaf.



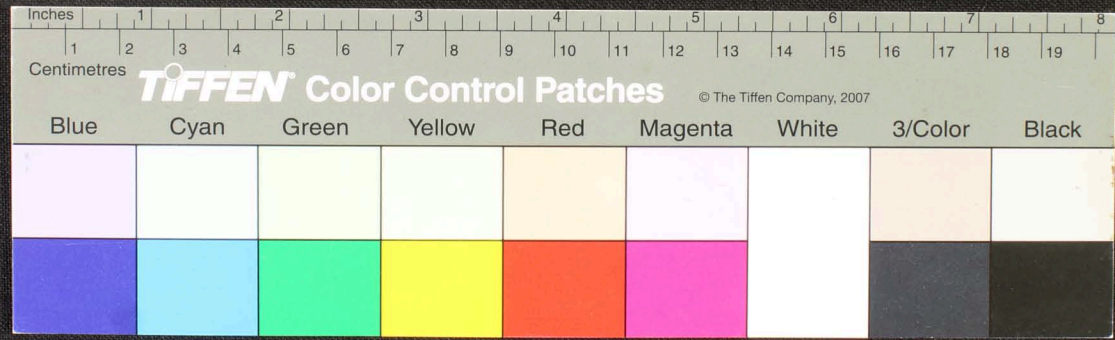
Handwritten Tamil script on a palm leaf manuscript. The text is arranged in approximately 10 horizontal lines across the length of the leaf. The script is finely etched into the surface of the dried leaf. Two circular holes are visible, which were traditionally used for threading a cord to bind multiple leaves together into a book format. The leaf shows signs of age, with some fraying and discoloration at the edges.



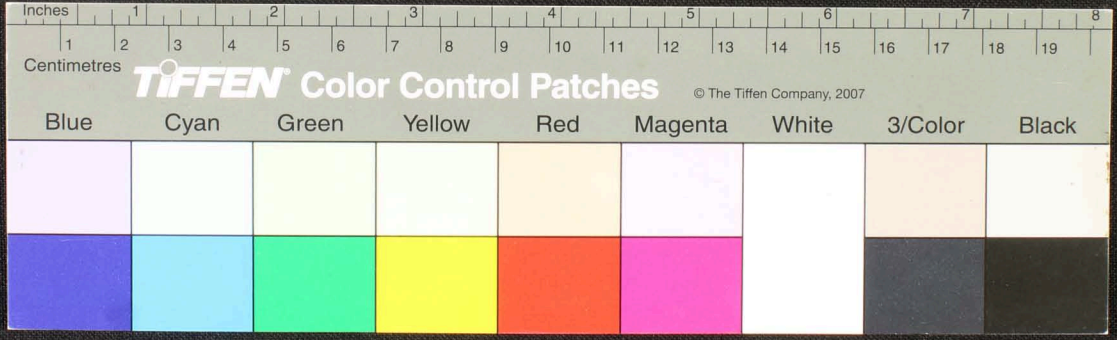
Handwritten Tamil script on a palm leaf manuscript. The text is arranged in approximately 10 horizontal lines across the length of the leaf. The script is finely etched into the surface of the dried leaf. There are two distinct circular holes, likely from a traditional string-and-stick binding method. The leaf shows signs of age and wear, particularly at the right end which is frayed.



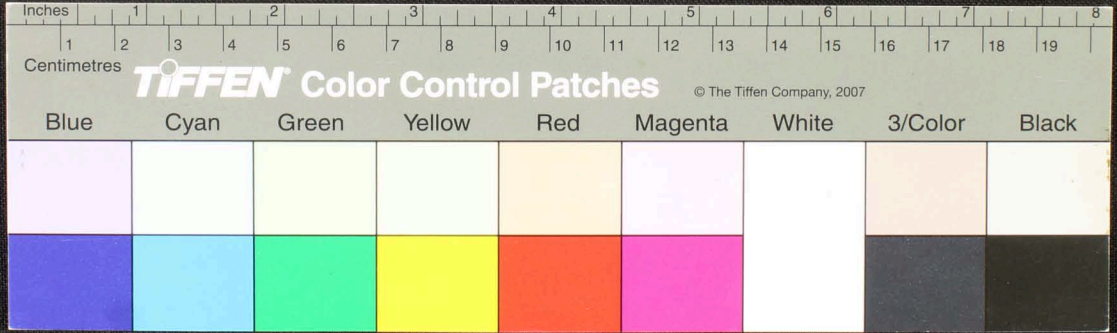
Handwritten Tamil script on a palm leaf manuscript. The text is arranged in approximately 10 horizontal lines across the length of the leaf. On the left side, there are three lines of text written vertically: "ஆம்பிர", "குதிரு", and "யம்". The main body of text consists of several lines of continuous script, with some characters appearing to be in a different script or dialect, possibly including religious or philosophical content. There are two circular holes visible on the leaf, which were traditionally used for threading a cord to bind multiple leaves together.



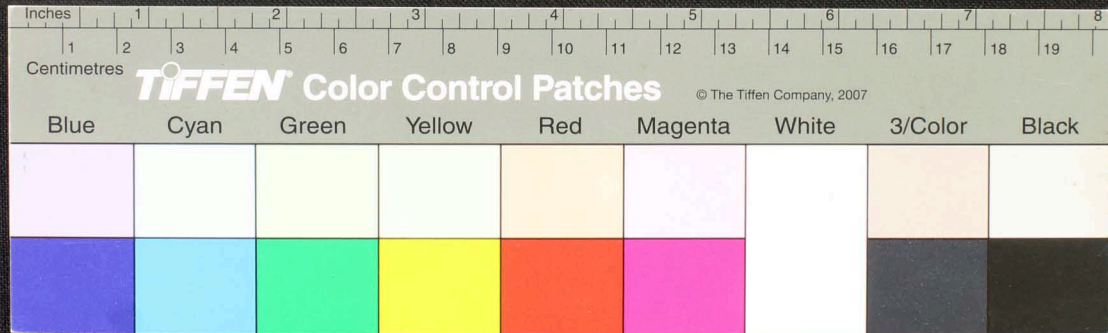
Handwritten Tamil script on a palm leaf manuscript. The text is arranged in approximately 10 horizontal lines across the length of the leaf. On the left side, there are vertical annotations: 'பக்கம்' (Page), 'மாடு' (Mark), and 'சீட்டு' (Correction). The script is densely packed and appears to be a form of classical Tamil.



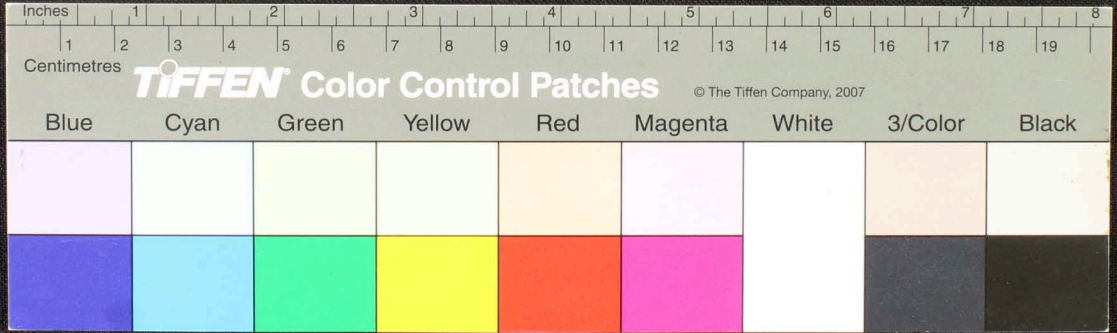
Handwritten Tamil script on a palm leaf manuscript. The text is densely packed and spans the length of the leaf. Two circular holes are visible, used for binding multiple leaves together. The script is written in a traditional style with dark ink on the natural yellowish-brown surface of the leaf.



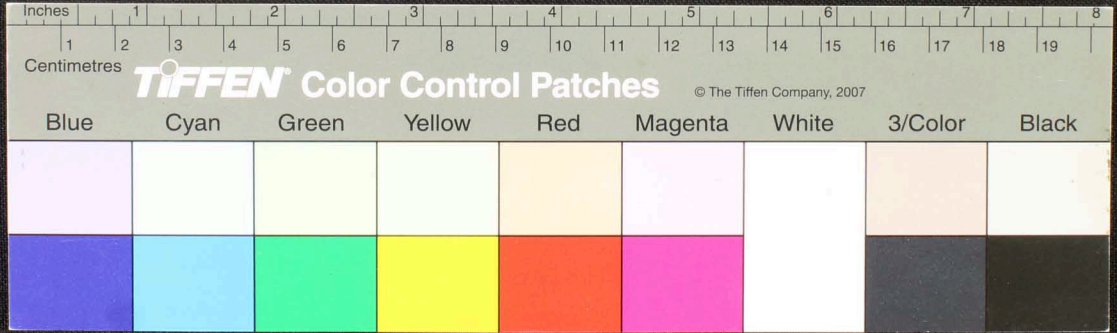
Handwritten Tamil script on a palm leaf manuscript. The text is arranged in approximately 10 horizontal lines across the length of the leaf. The script is finely etched into the surface of the dried leaf. There are two prominent circular holes, likely from traditional binding methods. The leaf shows signs of age and wear, with some fraying at the edges.



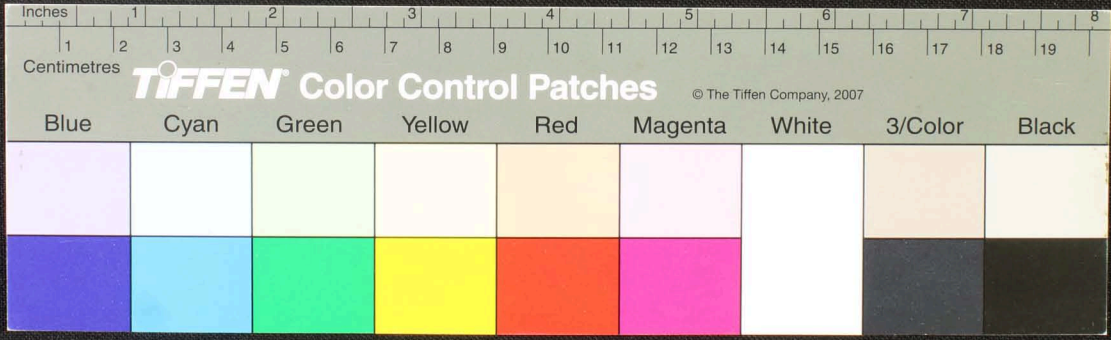
Handwritten text in Tamil script on a palm leaf manuscript. The text is densely packed and covers most of the leaf's surface. There are two circular holes visible, likely from a traditional binding system. The leaf shows signs of age and wear, with some fraying at the edges.



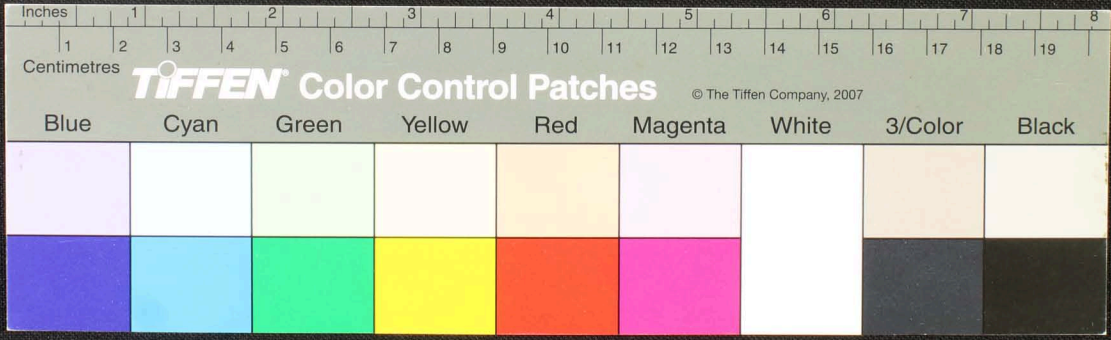
Handwritten Tamil script on a palm leaf manuscript. The text is arranged in approximately 10 horizontal lines across the length of the leaf. The script is finely etched into the surface of the dried leaf. On the left side, there are several vertical annotations or marginal notes, also in Tamil script. The leaf shows signs of age, including some dark spots and irregular edges.



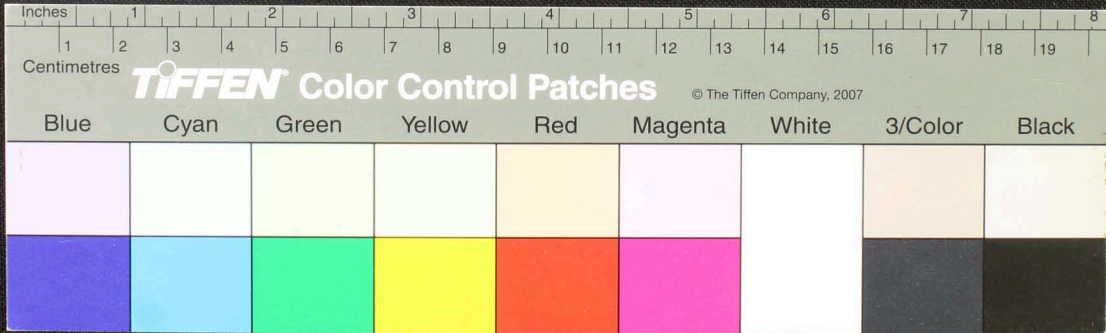
Handwritten Tamil script on a palm leaf manuscript. The text is densely packed and spans the length of the leaf. Two circular holes are visible, used for binding multiple leaves together. The script is written in a traditional style with dark ink on the natural yellowish-brown surface of the leaf.



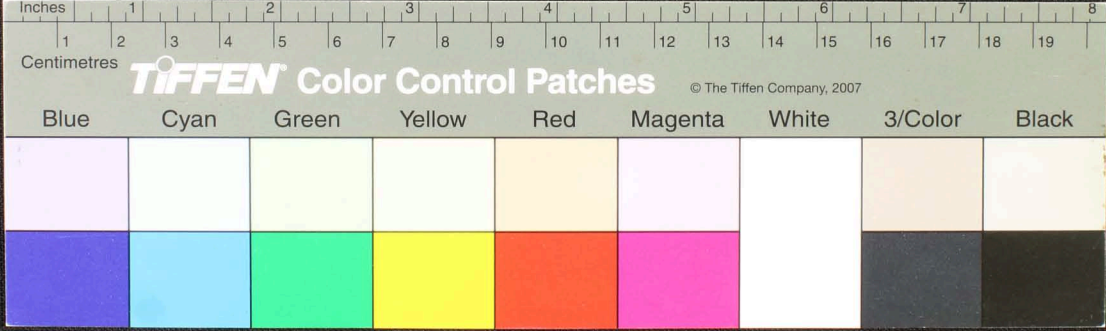
Handwritten Tamil script on a palm leaf manuscript. The text is densely packed in approximately 10 horizontal lines across the length of the leaf. Two circular holes are visible, which were traditionally used for threading a cord to bind multiple leaves together into a book format.



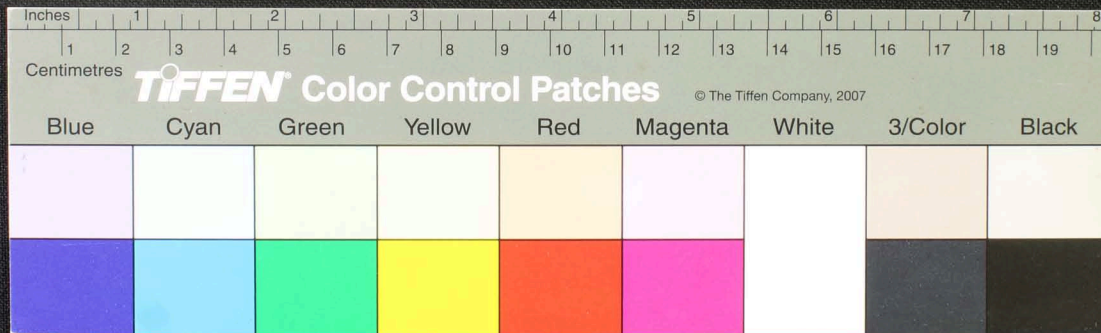
Handwritten Tamil script on a palm leaf manuscript. The text is densely packed and runs horizontally across the length of the leaf. There are two circular holes visible, which were traditionally used for threading a cord to bind multiple leaves together into a book format.



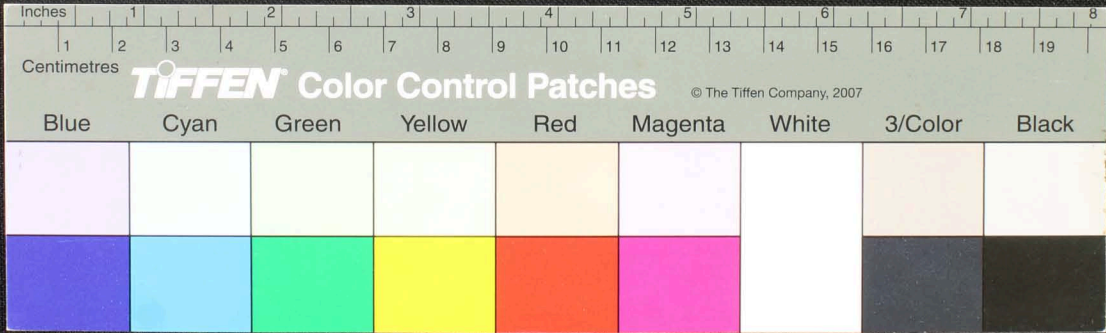
Handwritten Tamil script on a palm leaf manuscript. The text is arranged in approximately 10 horizontal lines across the length of the leaf. The script is finely etched into the surface of the dried leaf. On the left side, there are some faint, larger characters that appear to be a title or a reference number, possibly 'பு. 100'.



Handwritten Tamil script on a palm leaf manuscript. The text is densely packed and runs horizontally across the leaf. There are several dark circular marks, possibly holes or damage, scattered across the leaf. The script is in an older form of the Tamil language.

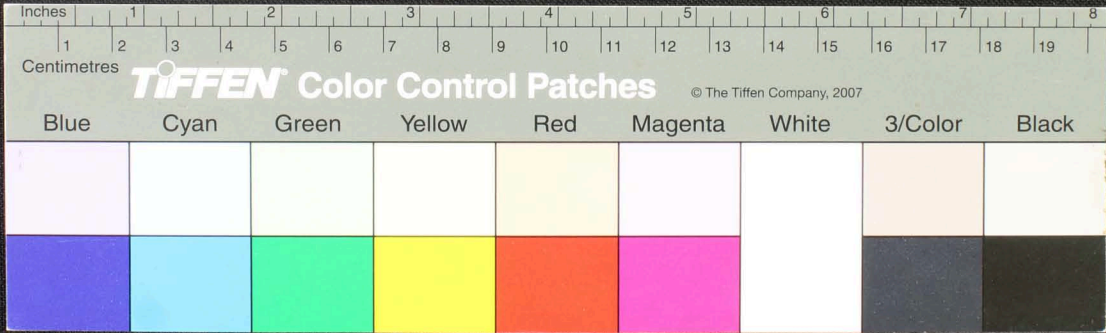


Handwritten Tamil script on a palm leaf manuscript. The text is densely packed and runs horizontally across the length of the leaf. There are two circular holes visible, which were traditionally used for threading a cord to bind multiple leaves together into a book format.

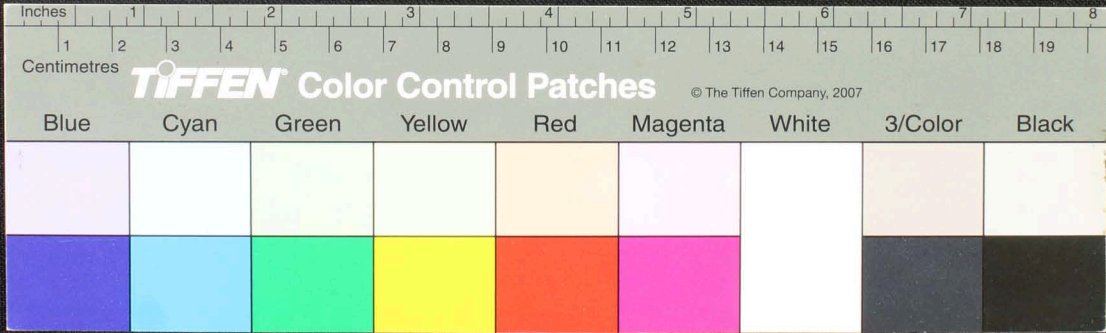


Handwritten Tamil script on a palm leaf manuscript. The text is densely packed and spans the length of the leaf. There are two circular holes visible, which were traditionally used for threading a cord to bind multiple leaves together. The script is written in a traditional style, likely from the 17th or 18th century.

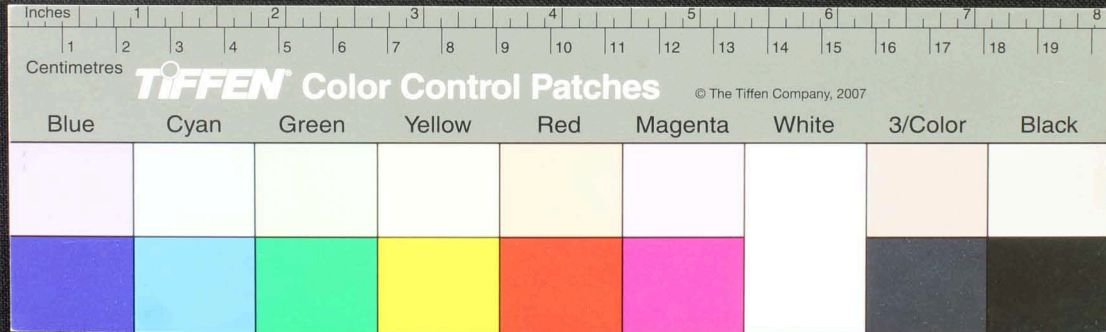
1768
சென்னை



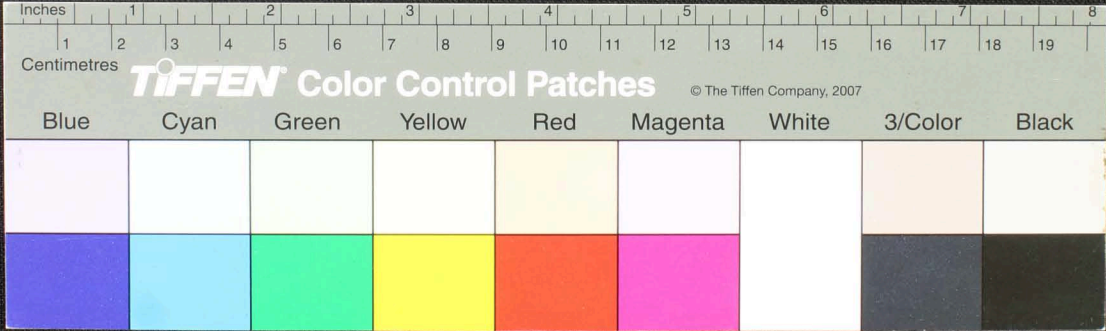
Handwritten Tamil script on a palm leaf manuscript. The text is arranged in approximately 10 horizontal lines. On the left side, there are marginal notes: 'புறநாடு' (Puranaadu) and 'புறநாடு' (Puranaadu). The script is densely packed and appears to be a form of classical Tamil literature or a historical record.



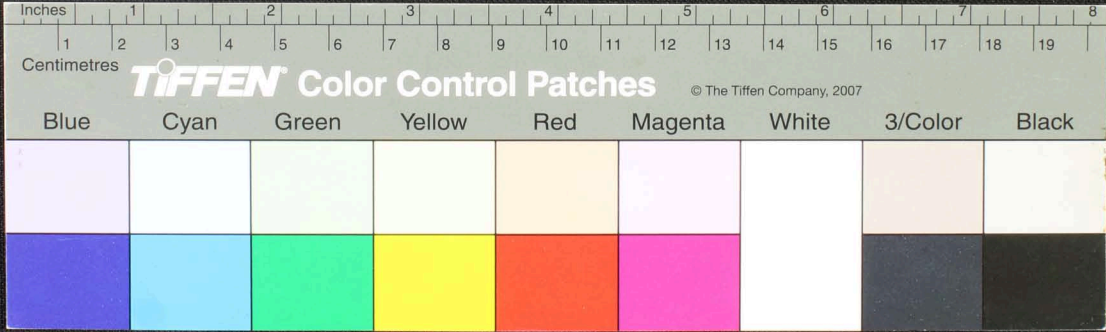
Handwritten Tamil script on a palm leaf manuscript. The text is arranged in approximately 10 horizontal lines across the length of the leaf. The script is finely etched into the surface of the dried leaf. There are two distinct circular holes, likely from a traditional string binding method. The leaf shows signs of age and wear, with some fraying at the edges.



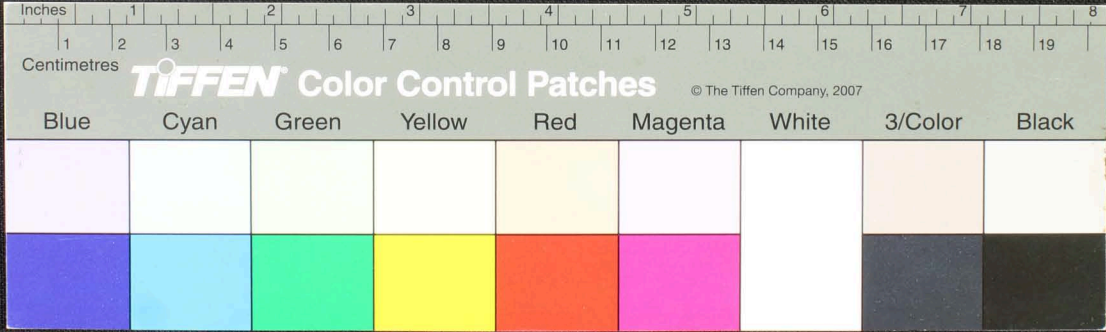
Handwritten text in Tamil script on a palm leaf manuscript. The text is densely packed and spans the length of the leaf. Two circular holes are visible, which were traditionally used for threading a cord to bind multiple leaves together into a book format. The script is in an older form of the Tamil language.



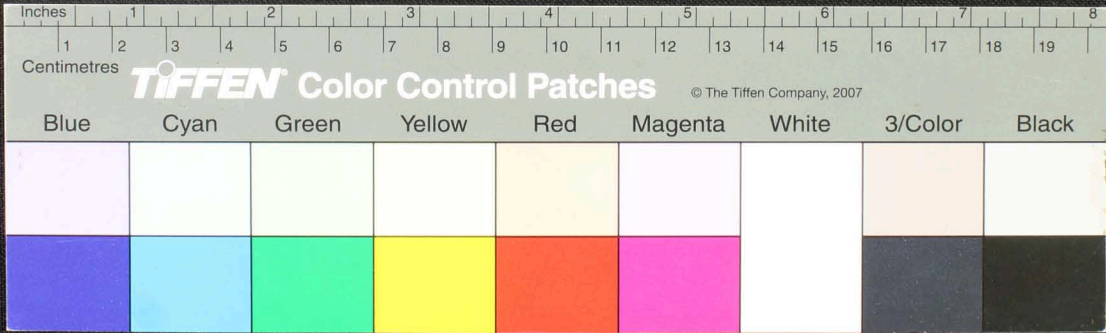
Handwritten Tamil script on a palm leaf manuscript strip. The text is arranged in approximately 10 horizontal lines, written in a traditional style. The leaf shows signs of age and wear, with some dark spots and irregular edges. The script is densely packed and covers most of the length of the strip.



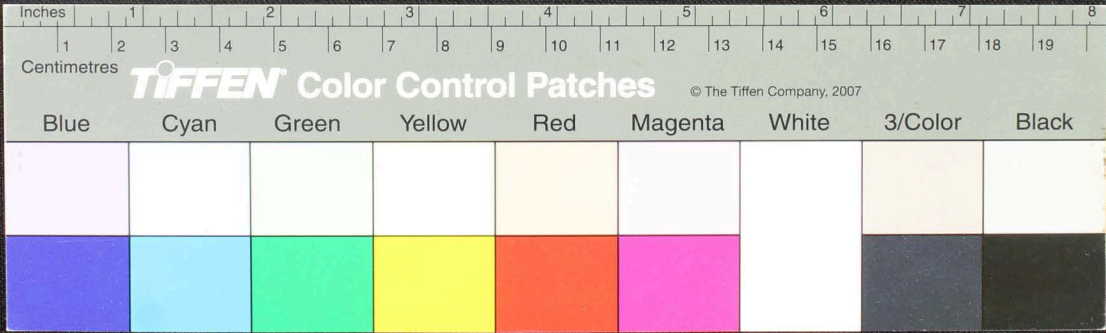
Handwritten Tamil script on a palm leaf manuscript. The text is arranged in approximately 10 horizontal lines across the length of the leaf. Two circular holes are visible, which were traditionally used for threading a cord to bind multiple leaves together into a book format. The script is finely etched into the surface of the dried leaf.



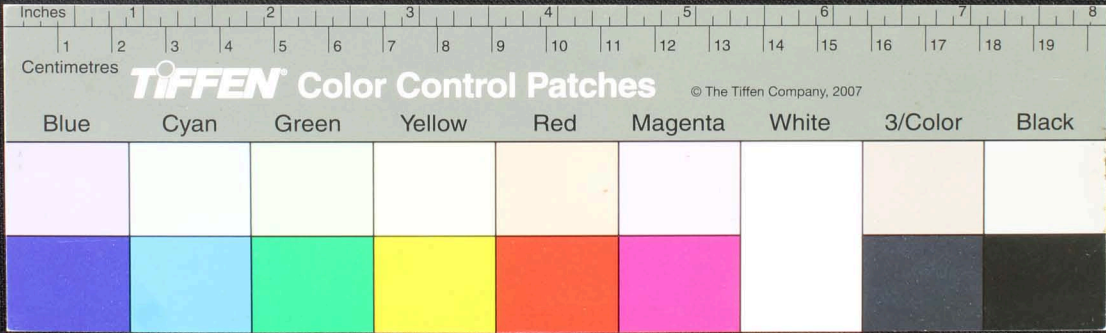
அகநா
 யுத
 நமஸ்கரித்த நகுளு நவனயுளுகுதபநகுதிசு - டி க்குளுகுளுவது உதிவகி - டி க்குளுகுளுவது உதிவகி
 கிசிரவதகிளுகு - வயபுநயவதகி - டி க்குளுகுளுவது உதிவகி - டி க்குளுகுளுவது உதிவகி
 மானகுளும - டி க்குளுகுளுவது உதிவகி - டி க்குளுகுளுவது உதிவகி - டி க்குளுகுளுவது உதிவகி
 மமவவகுளுகிசு - டி க்குளுகுளுவது உதிவகி - டி க்குளுகுளுவது உதிவகி - டி க்குளுகுளுவது உதிவகி
 டி க்குளுகுளுவது உதிவகி - டி க்குளுகுளுவது உதிவகி - டி க்குளுகுளுவது உதிவகி - டி க்குளுகுளுவது உதிவகி



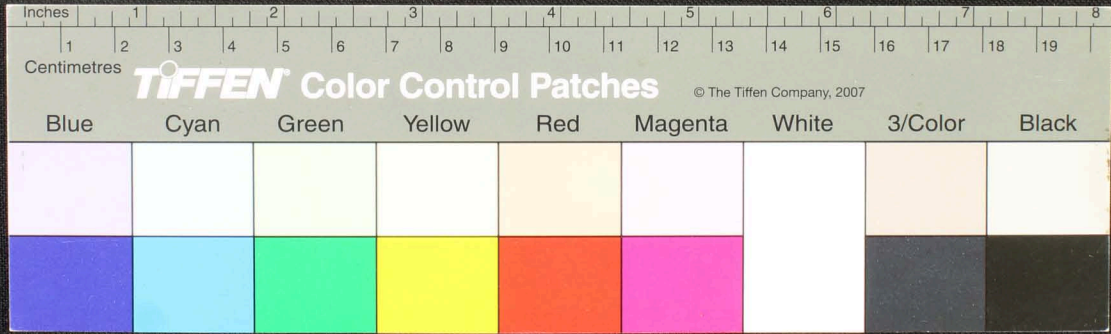
Handwritten Tamil script on a palm leaf manuscript. The text is densely packed and spans the length of the leaf. There are two circular holes visible, which were traditionally used for threading a cord to bind multiple leaves together. The script is written in a traditional style, with some characters appearing to be in a different script or dialect, possibly Grantha or a specific regional variant of Tamil.



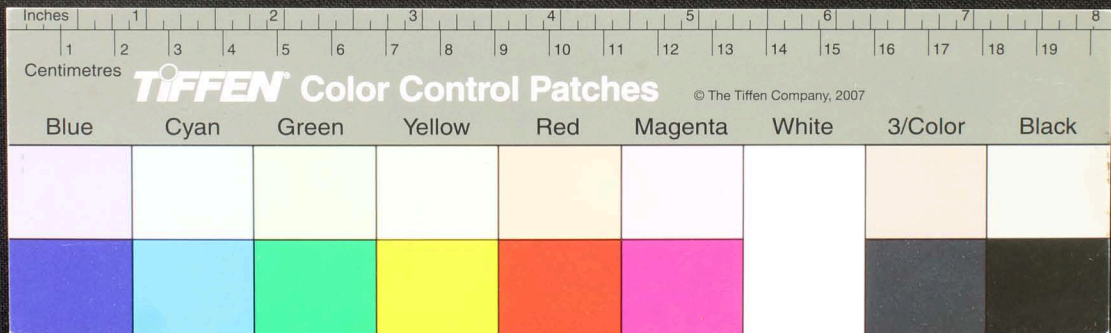
Handwritten Tamil script on a palm leaf manuscript. The text is densely packed and spans the length of the leaf. There are two circular holes visible, which were traditionally used for threading a cord to bind multiple leaves together. The script is written in a traditional style, with some characters appearing to be in a different script or dialect, possibly Grantha or a specific regional variant of Tamil.



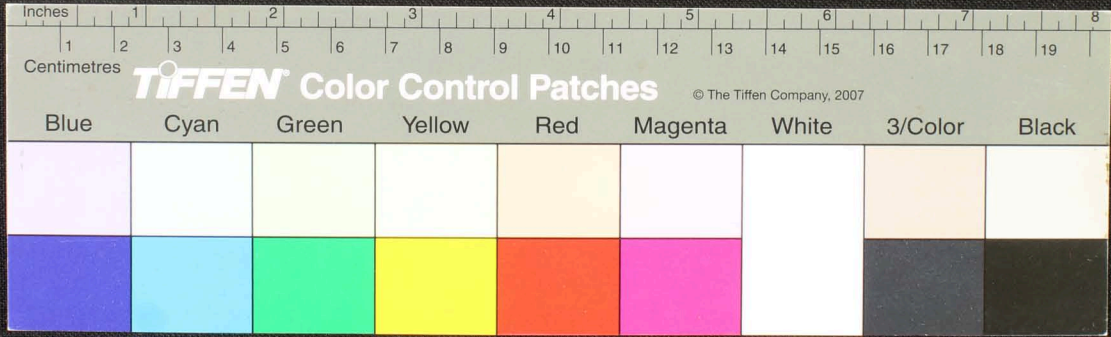
Handwritten text in Tamil script on a palm leaf manuscript. The text is densely packed and spans the length of the leaf. Two circular holes are visible, which were traditionally used for threading a cord to bind multiple leaves together into a book format. The script is in an older form of the Tamil language.



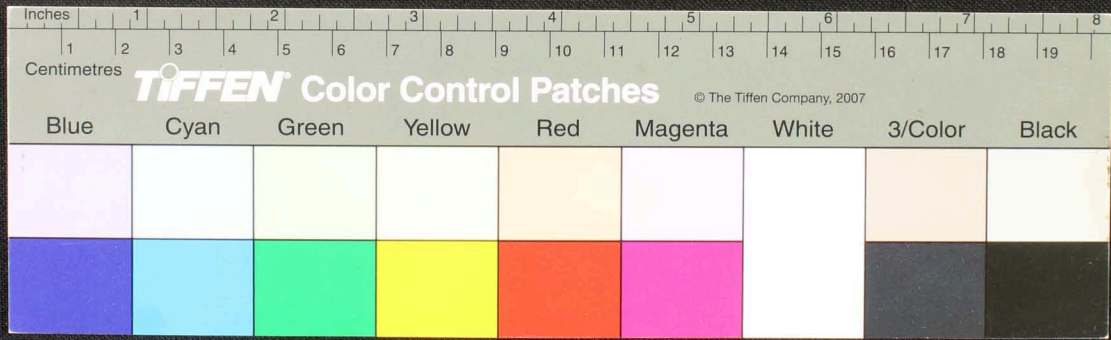
Handwritten Tamil script on a palm leaf manuscript. The text is arranged in approximately 10 horizontal lines across the length of the leaf. The script is densely packed and appears to be a form of classical or historical Tamil. There are two distinct circular holes, one on the left side and one on the right side, which were traditionally used for threading a cord to bind multiple leaves together into a book format. The leaf shows signs of age, including some staining and irregular edges.



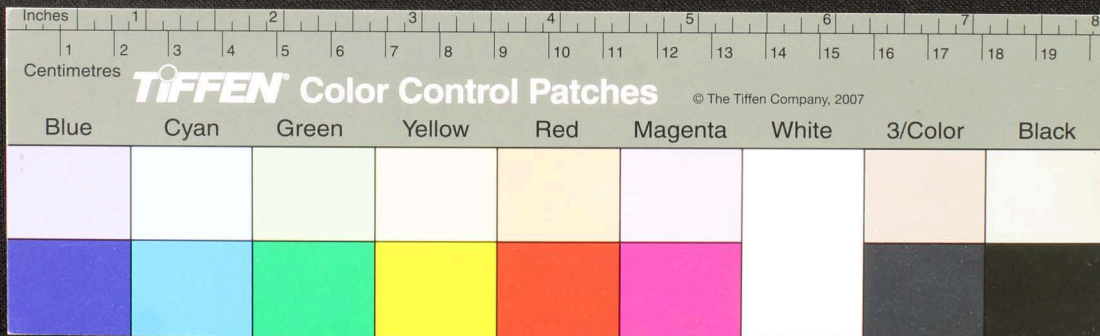
Handwritten text in Tamil script on a palm leaf manuscript. The text is densely packed and spans the length of the leaf. Two circular holes are visible, used for binding multiple leaves together.



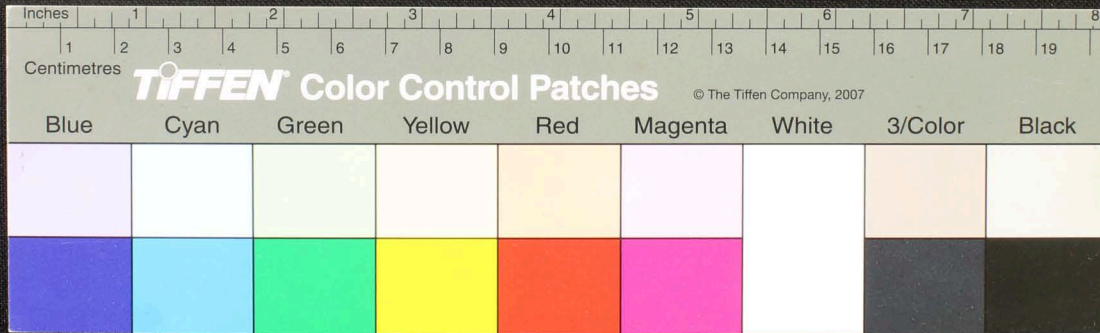
Handwritten Tamil script on a palm leaf manuscript. The text is densely packed in approximately 10 horizontal lines across the length of the leaf. Two circular holes are visible, which were traditionally used for threading a cord to bind multiple leaves together into a book format. The script is written in a traditional style with dark ink on the natural yellowish-brown surface of the dried leaf.



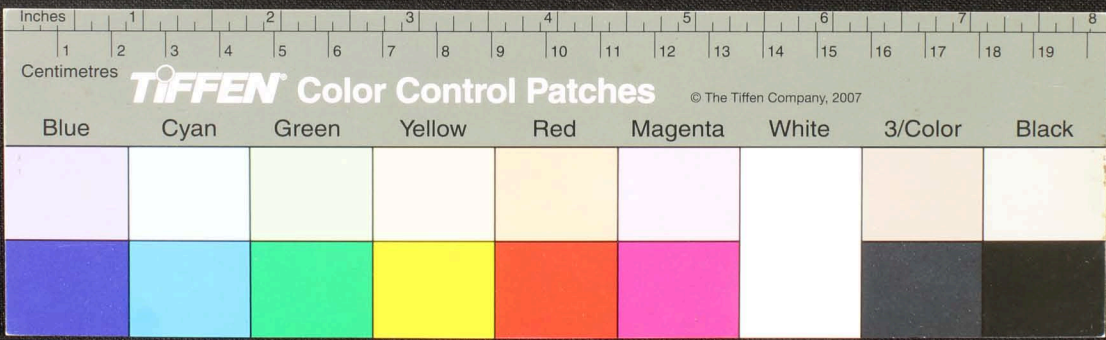
Handwritten text in Tamil script on a palm leaf manuscript. The text is densely packed and spans the length of the leaf. Two circular holes are visible, used for binding multiple leaves together.



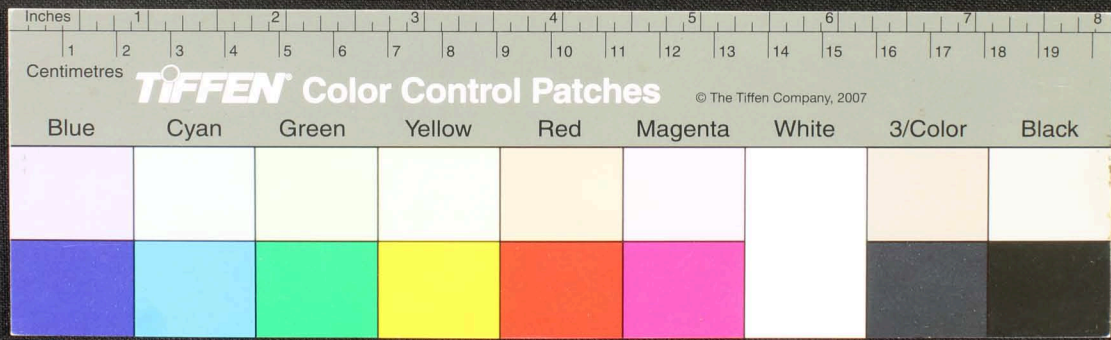
Handwritten Tamil script on a palm leaf manuscript. The text is densely packed and runs horizontally across the length of the leaf. There are two circular holes visible, which were traditionally used for threading a cord to bind multiple leaves together into a book format. The script appears to be a form of classical or historical Tamil, possibly containing religious or philosophical content.



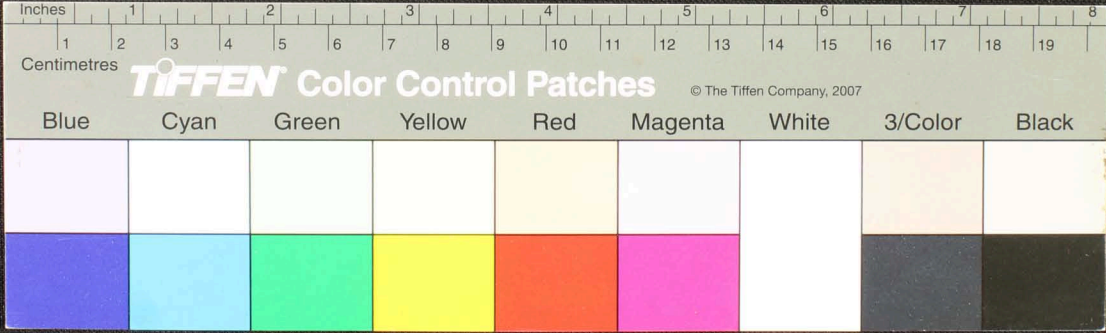
Handwritten Tamil script on a palm leaf manuscript. The text is densely packed and runs horizontally across the length of the leaf. There are two circular holes visible, which were traditionally used for threading a cord to bind multiple leaves together. The script appears to be a form of classical Tamil, possibly containing religious or philosophical content.



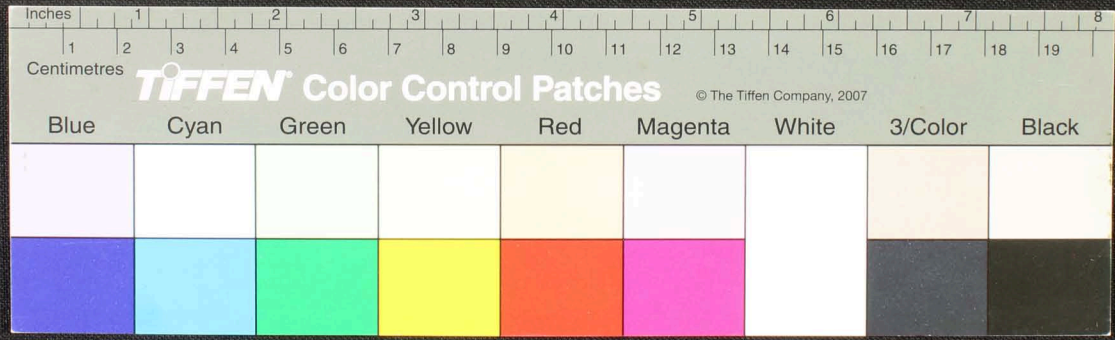
Handwritten text in Tamil script on a palm leaf manuscript. The text is densely packed and spans the length of the leaf. Two circular holes are visible, used for binding multiple leaves together.



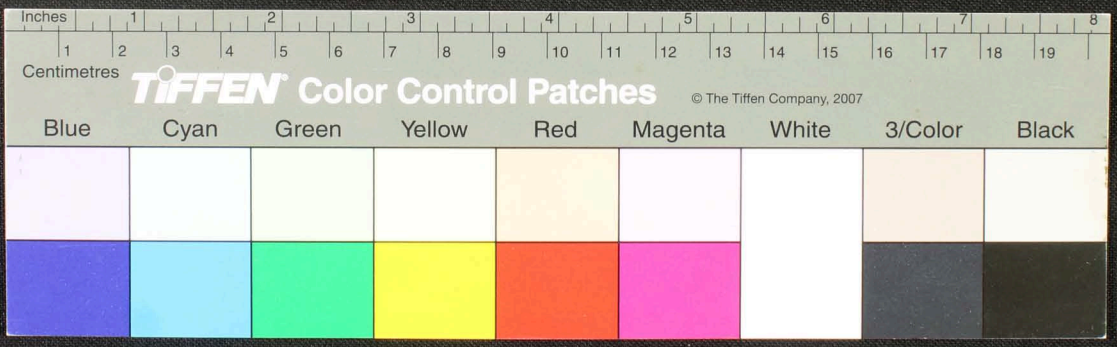
Handwritten Tamil script on a palm leaf manuscript. The text is densely packed and runs horizontally across the length of the leaf. There are two circular holes visible, which were traditionally used for threading a cord to bind multiple leaves together into a book format. The script is in an older form of the Tamil language, likely from the medieval or early modern period.



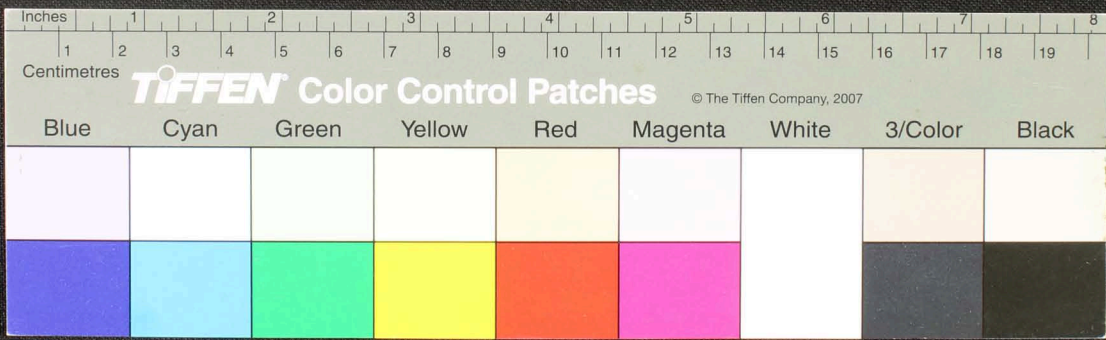
Handwritten text in Tamil script on a palm leaf manuscript. The text is densely packed and spans the length of the leaf. Two circular holes are visible, used for binding multiple leaves together. The script is in an older form of the Tamil language.



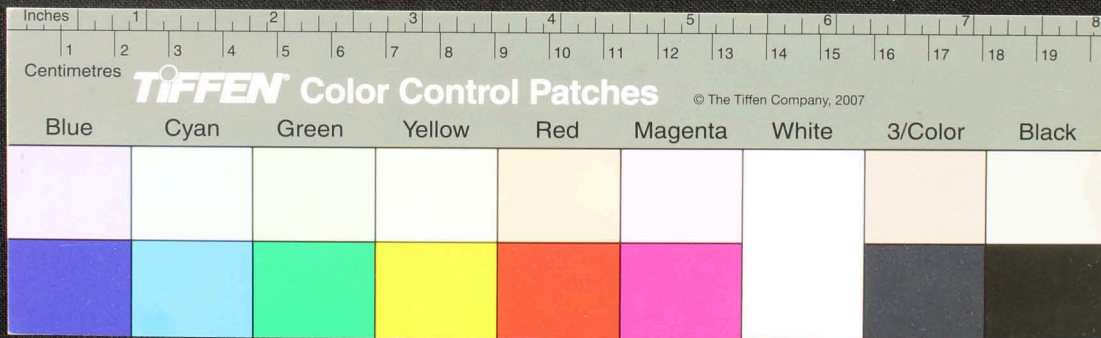
Handwritten text in Tamil script on a palm leaf manuscript. The text is arranged in approximately 10 horizontal lines across the length of the leaf. The script is finely etched into the surface of the dried leaf. The leaf shows signs of age and wear, with some dark spots and irregular edges.



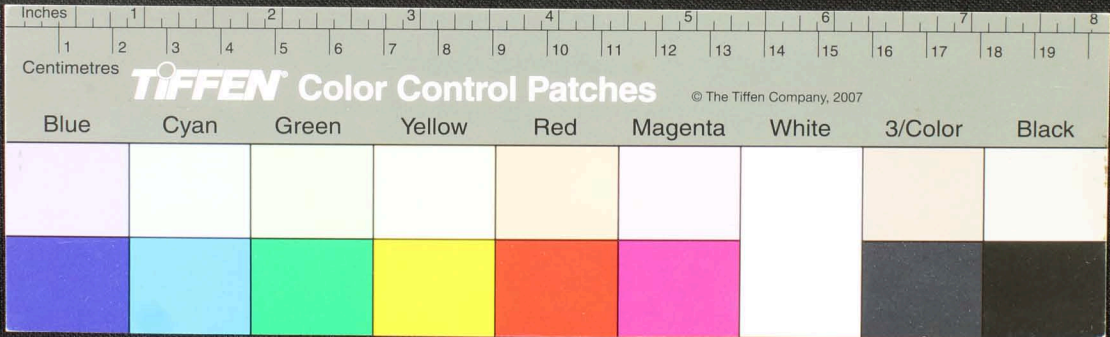
Handwritten text in Tamil script on a palm leaf manuscript. The text is arranged in approximately 10 horizontal lines across the length of the leaf. Two circular holes are visible, which were traditionally used for threading a cord to bind multiple leaves together. The script is finely etched into the surface of the dried leaf.



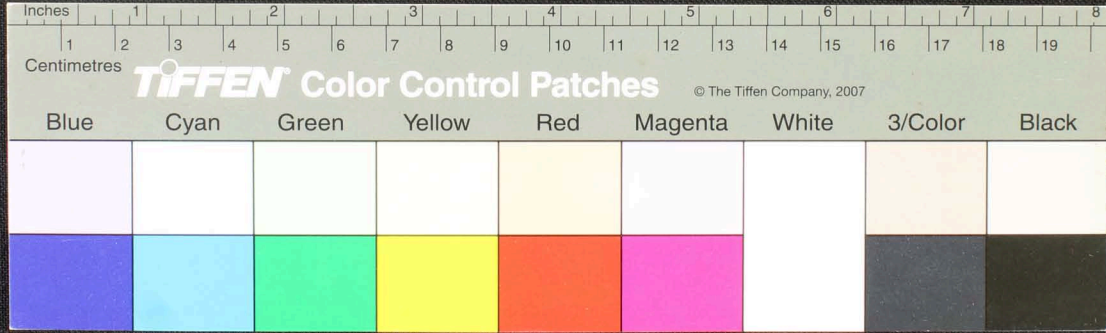
Handwritten text in Tamil script on a palm leaf manuscript. The text is arranged in approximately 12 horizontal lines across the length of the leaf. Two circular holes are visible, which were traditionally used for threading a cord to bind multiple leaves together. The script is finely etched into the surface of the dried leaf.



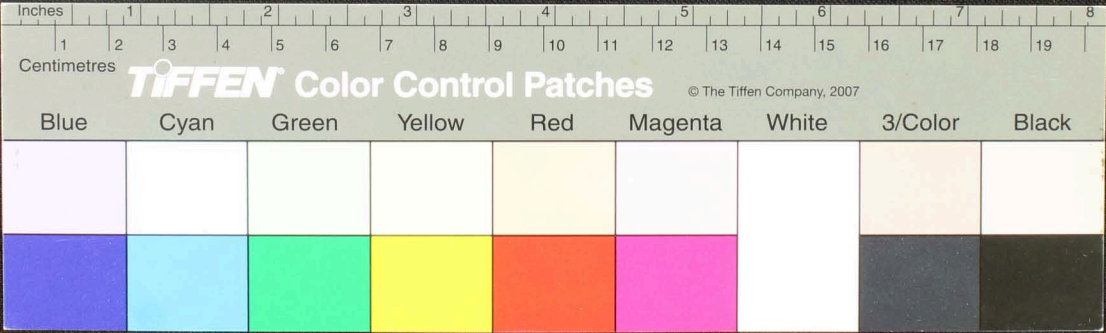
Handwritten text in Tamil script on a palm leaf manuscript strip. The text is arranged in approximately 10 horizontal lines. Two circular holes are visible, which were traditionally used for threading a cord to bind multiple leaves together. The script is finely etched into the surface of the dried leaf.



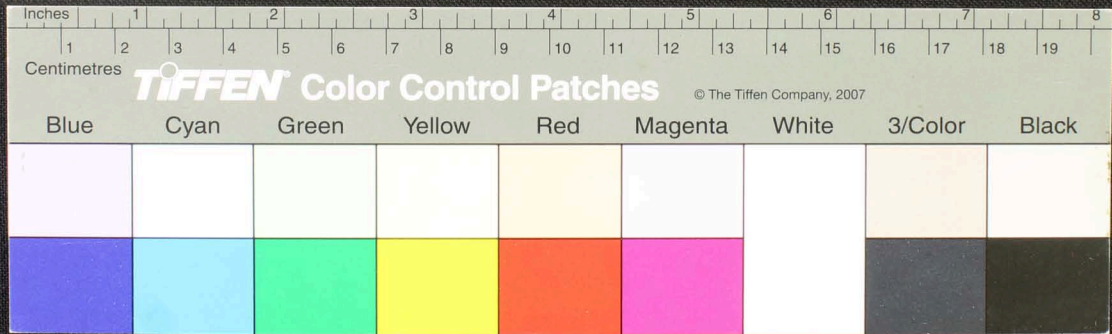
Handwritten Tamil script on a palm leaf manuscript strip. The text is densely packed and runs horizontally across the length of the leaf. Two circular holes are visible, which were traditionally used for threading a cord to bind multiple leaves together into a book format. The script appears to be a form of classical or historical Tamil, possibly containing religious or philosophical content.



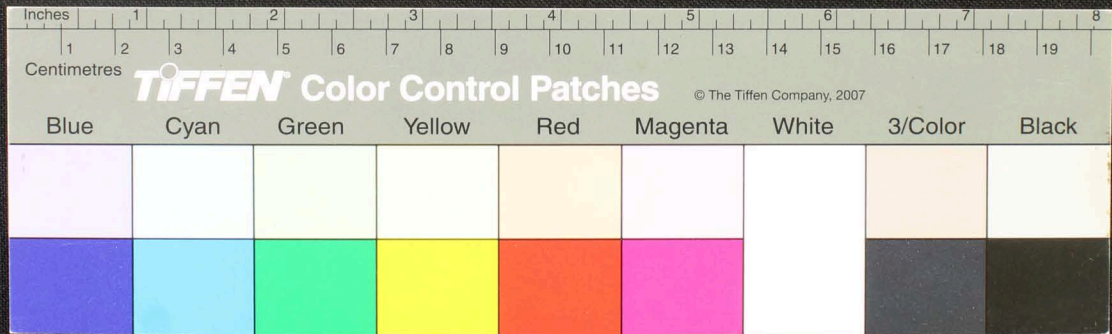
Handwritten Tamil script on a palm leaf manuscript. The text is densely packed and runs horizontally across the length of the leaf. There are two circular holes visible, which were traditionally used for threading a cord to bind multiple leaves together. The script is in an older form of the Tamil language.



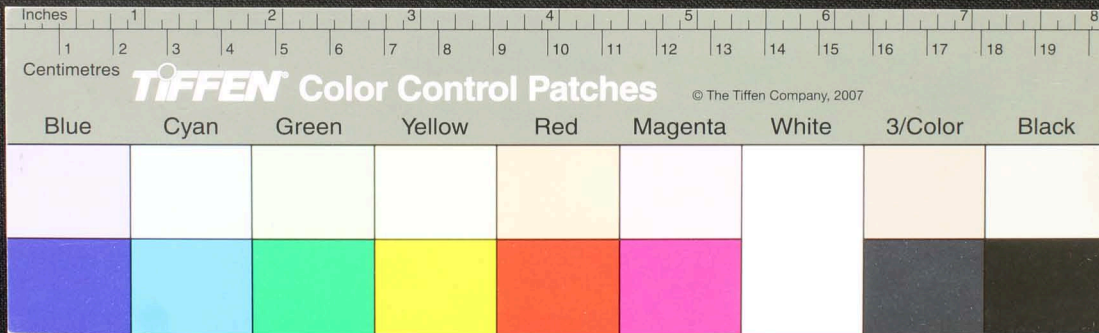
Handwritten text in Tamil script on a palm leaf manuscript. The text is arranged in approximately 10 horizontal lines across the length of the leaf. Two circular holes are visible, which were traditionally used for threading a cord to bind multiple leaves together. The script is finely etched into the surface of the dried leaf.



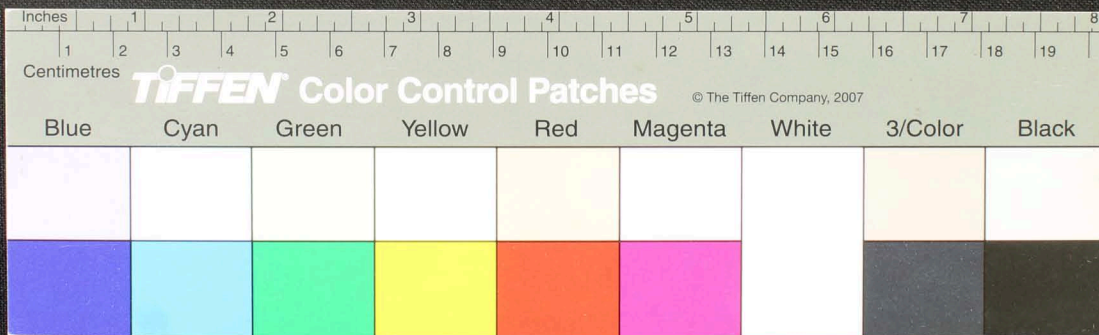
Handwritten text in Tamil script on a palm leaf manuscript. The text is arranged in approximately 12 horizontal lines across the length of the leaf. Two circular holes are visible, which were traditionally used for threading a cord to bind multiple leaves together. The script is finely etched into the surface of the dried leaf.



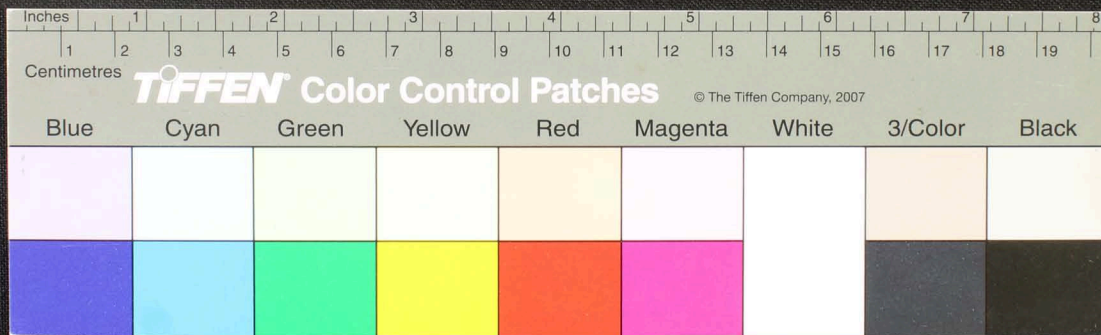
Handwritten Tamil script on a palm leaf manuscript. The text is arranged in approximately 15 horizontal lines across the length of the leaf. Two circular holes are visible, which were traditionally used for threading a cord to bind multiple leaves together. The script is finely etched into the surface of the dried leaf.



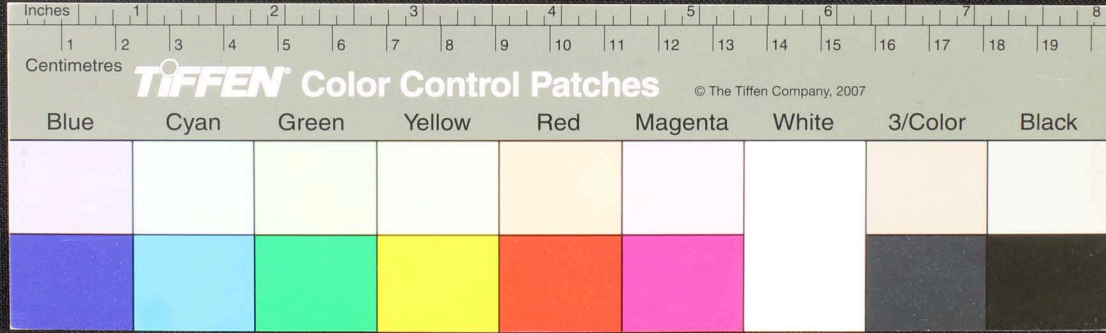
Handwritten text in Tamil script on a palm leaf manuscript. The text is arranged in approximately 10 horizontal lines across the length of the leaf. Two circular holes are visible, which were traditionally used for threading a cord to bind multiple leaves together. The leaf shows signs of age, including some staining and irregular edges.



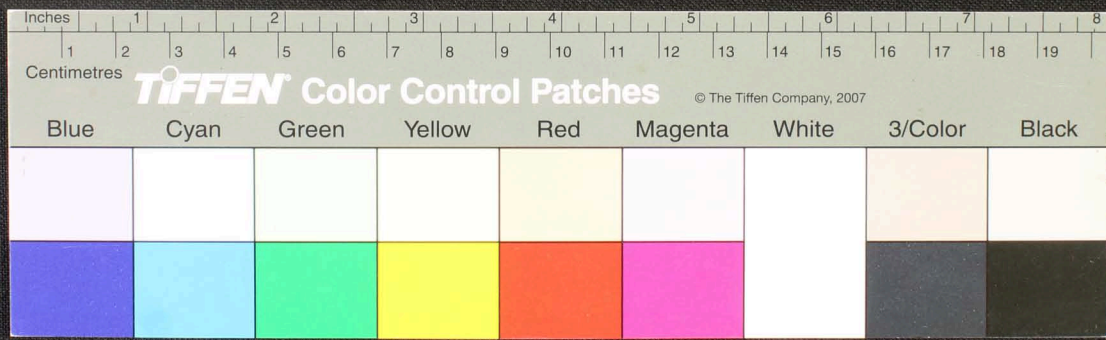
Handwritten Tamil script on a palm leaf manuscript. The text is arranged in approximately 10 horizontal lines across the length of the leaf. On the left side, there are three vertical labels: 'வாய்' (Vai), 'எழுத்து' (Ezuttu), and 'மொழி' (Mozhi). The script is densely packed and appears to be a form of classical Tamil, possibly including religious or philosophical content. There are two circular holes visible on the leaf, which were traditionally used for threading a cord to bind multiple leaves together into a book.



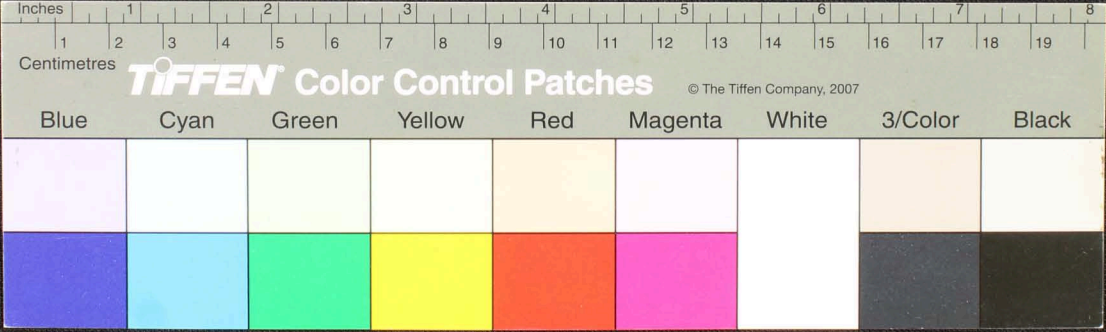
Handwritten Tamil script on a palm leaf manuscript. The text is arranged in approximately 12 horizontal lines across the length of the leaf. There are two distinct circular holes, one near the left end and one near the right end, which were traditionally used for threading a cord to bind multiple leaves together into a book format. The script is finely etched into the surface of the dried leaf.



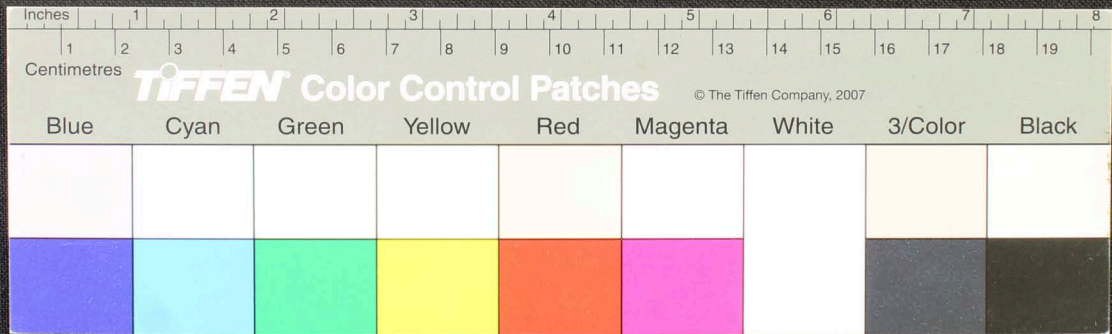
Handwritten Tamil script on a palm leaf manuscript. The text is densely packed and runs horizontally across the length of the leaf. There are several circular holes along the leaf, which were traditionally used for threading a cord to bind multiple leaves together. On the left side, there is a small section of text that appears to be a title or a specific reference, possibly including the name of the scribe or the content of the leaf.



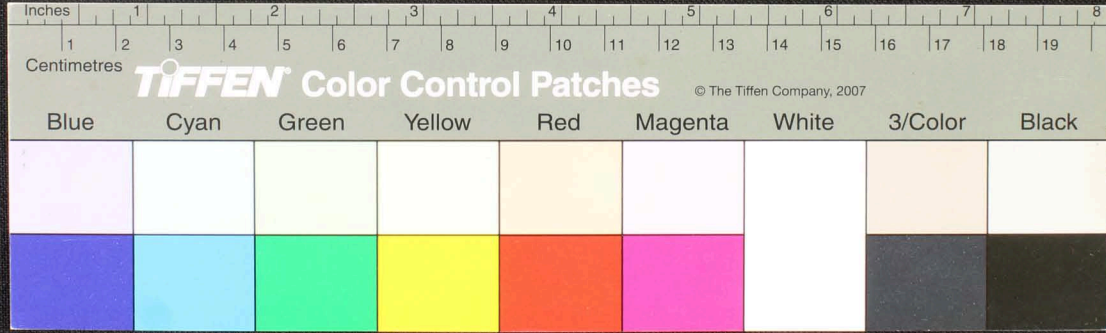
Handwritten Tamil script on a palm leaf manuscript strip. The text is arranged in approximately 10 horizontal lines across the length of the leaf. Two circular holes are visible, which were traditionally used for threading a cord to bind multiple leaves together into a book format. The script is densely packed and appears to be a form of classical or historical Tamil.



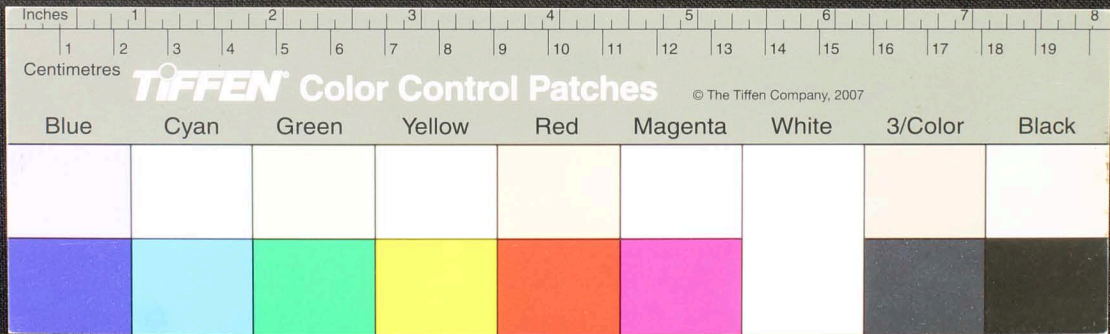
Handwritten Tamil script on a palm leaf manuscript. The text is arranged in approximately 10 horizontal lines. On the left side, there are several lines of text that appear to be a header or a specific section title, possibly including the name of the scribe or the title of the work. The main body of the text consists of continuous script. There are two distinct circular holes punched through the leaf, one near the left edge and one near the right edge, which were traditionally used for threading a cord to bind multiple leaves together into a book format. The leaf shows signs of age, with some discoloration and wear at the right edge.



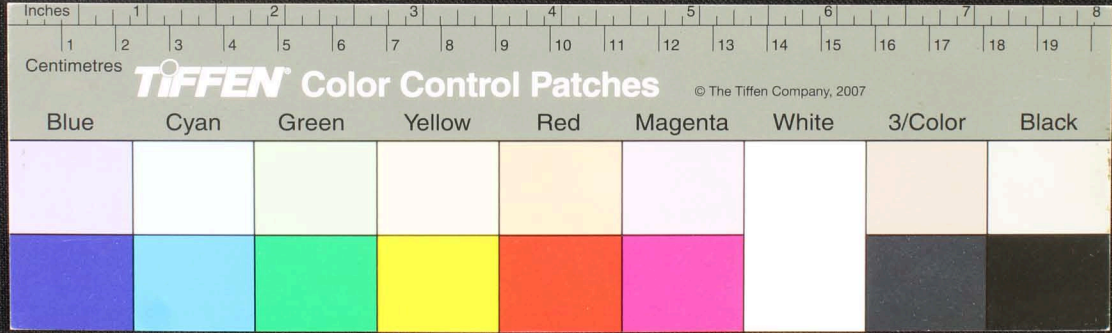
Handwritten Tamil script on a palm leaf manuscript. The text is arranged in approximately 10 horizontal lines across the length of the leaf. The script is finely etched into the surface of the dried leaf. There are two distinct circular holes along the leaf, which were traditionally used for threading a cord to bind multiple leaves together into a book format. The leaf shows signs of age and wear, with some fraying at the edges.



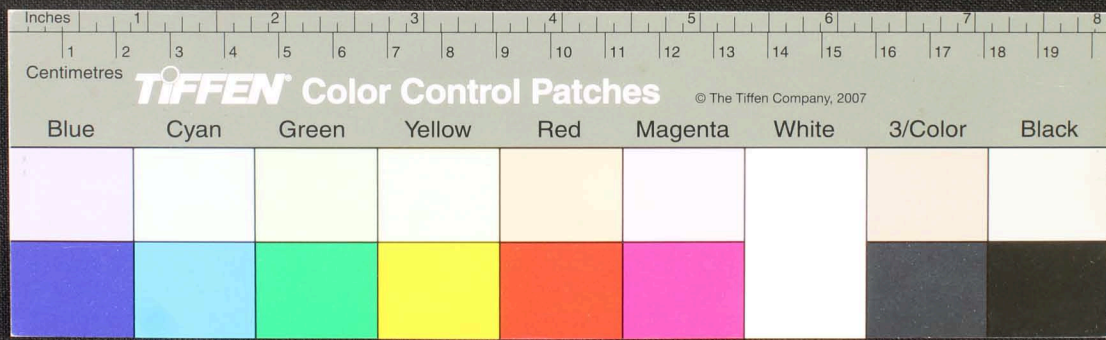
Handwritten Tamil script on a palm leaf manuscript strip. The text is arranged in approximately 10 horizontal lines. Two circular holes are visible, which were traditionally used for threading a cord to bind multiple leaves together. The script is finely etched into the surface of the dried leaf.



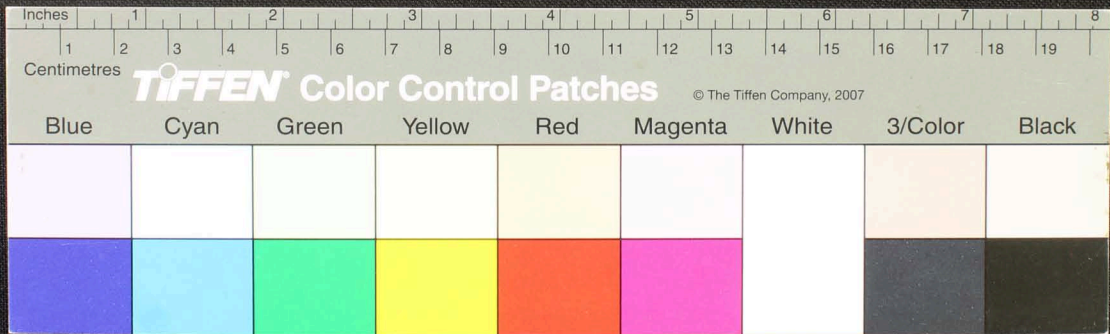
Handwritten Tamil script on a palm leaf manuscript. The text is arranged in approximately 10 horizontal lines across the length of the leaf. Two circular holes are visible, used for binding multiple leaves together. The script is finely etched into the surface of the dried leaf.



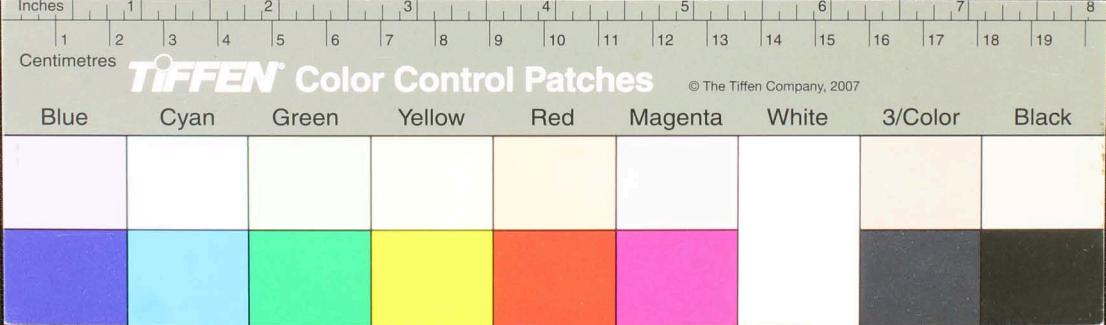
Handwritten Tamil script on a palm leaf manuscript. The text is arranged in approximately 10 horizontal lines across the length of the leaf. The script is densely packed and appears to be a form of classical or historical Tamil. There are two distinct circular holes or indentations on the leaf, one roughly in the third line and another in the fifth line, which were traditionally used for threading a cord to bind multiple leaves together into a book format.



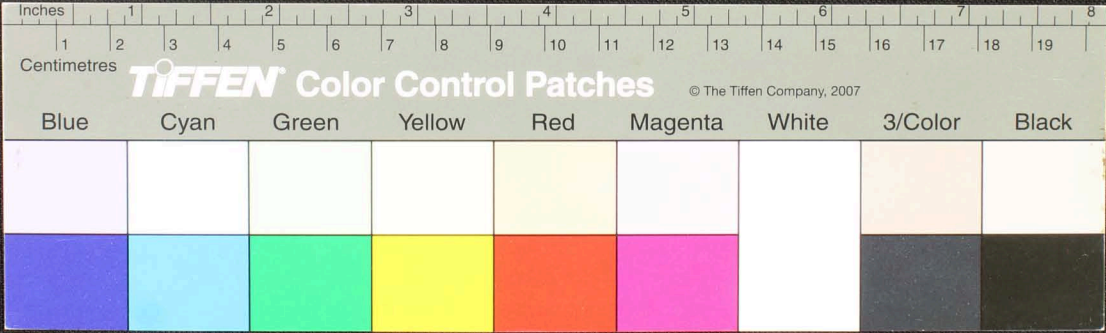
Handwritten text in Tamil script on a palm leaf manuscript. The text is arranged in approximately 10 horizontal lines across the length of the leaf. The script is finely etched into the surface of the dried leaf. The leaf shows signs of age and wear, with some fraying at the edges and two distinct circular holes, likely from traditional binding methods.



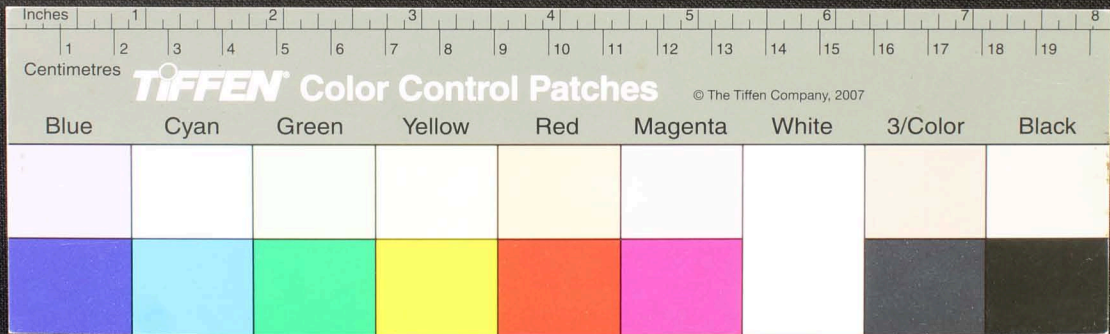
Handwritten Tamil script on a palm leaf manuscript strip. The text is arranged in approximately 10 horizontal lines across the length of the leaf. Two circular holes are visible, which were traditionally used for threading a cord to bind multiple leaves together into a book format. The script is finely etched into the surface of the dried leaf.



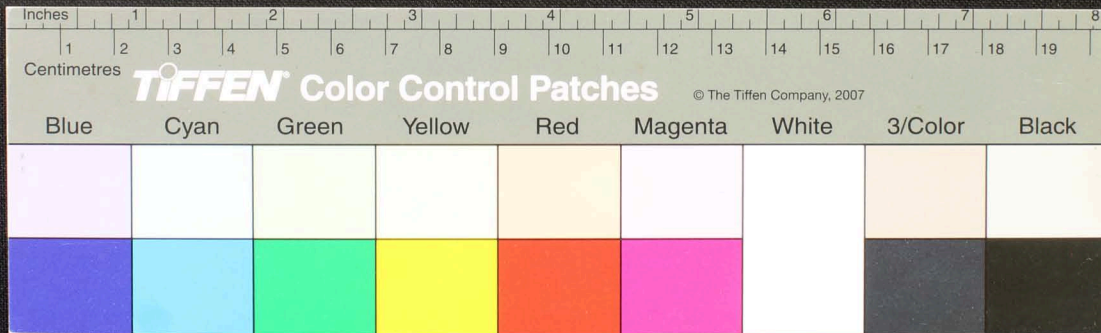
Handwritten text in Tamil script on a palm leaf manuscript. The text is arranged in approximately 10 horizontal lines across the length of the leaf. The script is finely etched into the surface of the dried leaf. Two circular holes are visible, which were traditionally used for threading a cord to bind multiple leaves together into a book format.



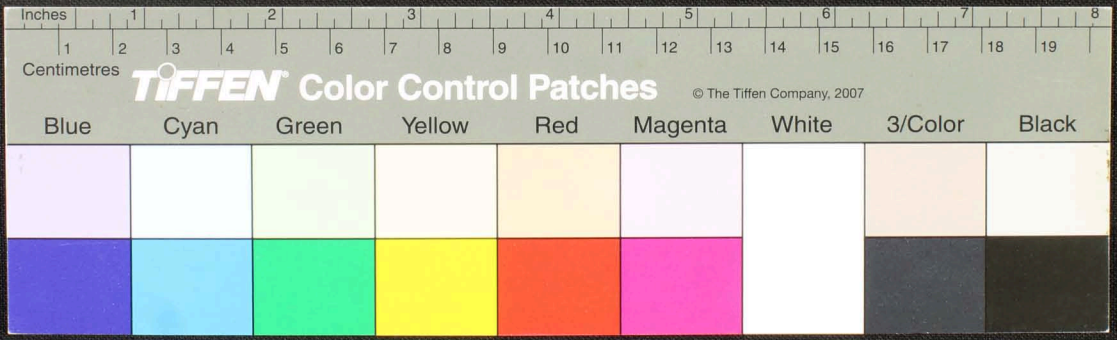
Handwritten Tamil script on a palm leaf manuscript. The text is arranged in approximately 10 horizontal lines across the length of the leaf. The script is finely etched into the surface of the dried leaf. The leaf shows signs of age, including some dark spots and irregular edges.



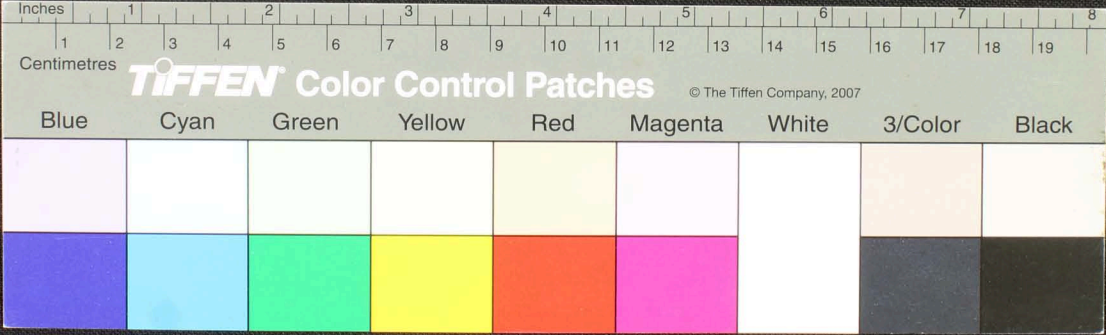
Handwritten Tamil script on a palm leaf manuscript. The text is arranged in approximately 10 horizontal lines across the length of the leaf. The script is finely etched into the surface of the dried leaf. The leaf shows signs of age, including some dark spots and irregular edges.



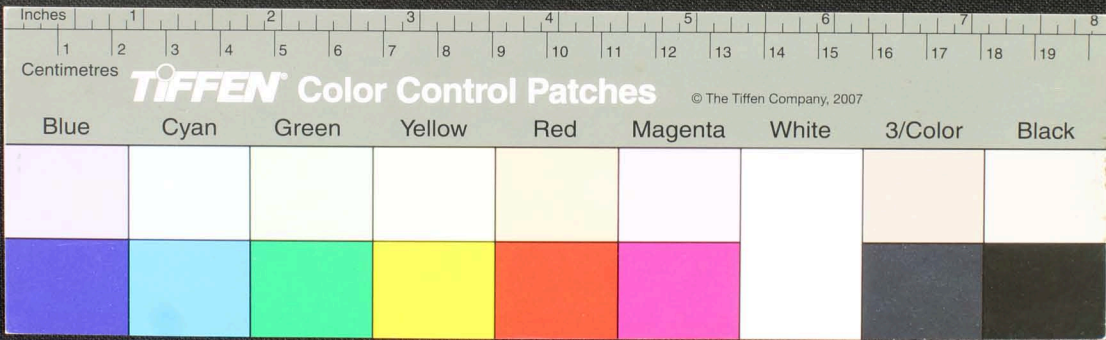
Handwritten Tamil script on a palm leaf manuscript. The text is densely packed in approximately 12 horizontal lines across the length of the leaf. Two circular holes are visible, which were traditionally used for threading a cord to bind multiple leaves together into a book format. The script is written in a traditional style with dark ink on the natural yellowish-brown surface of the dried leaf.



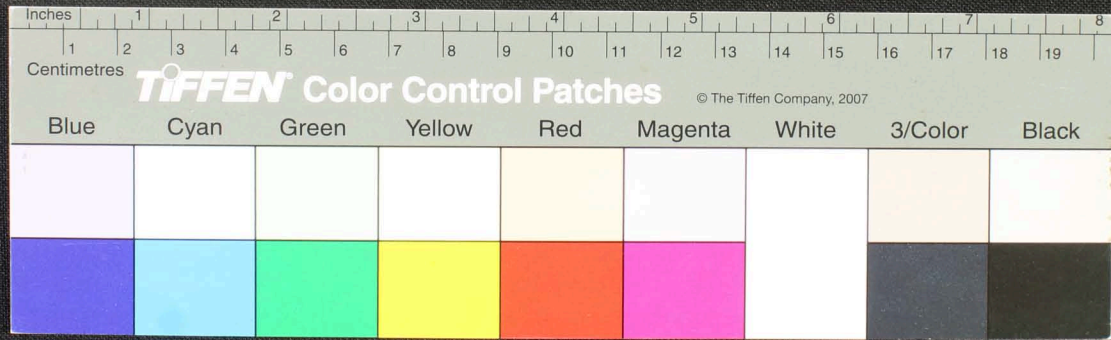
Handwritten Tamil script on a palm leaf manuscript. The text is arranged in approximately 10 horizontal lines across the length of the leaf. The script is a traditional form of the Tamil language, likely used for religious or philosophical purposes. The leaf shows signs of age, with some discoloration and wear at the edges.



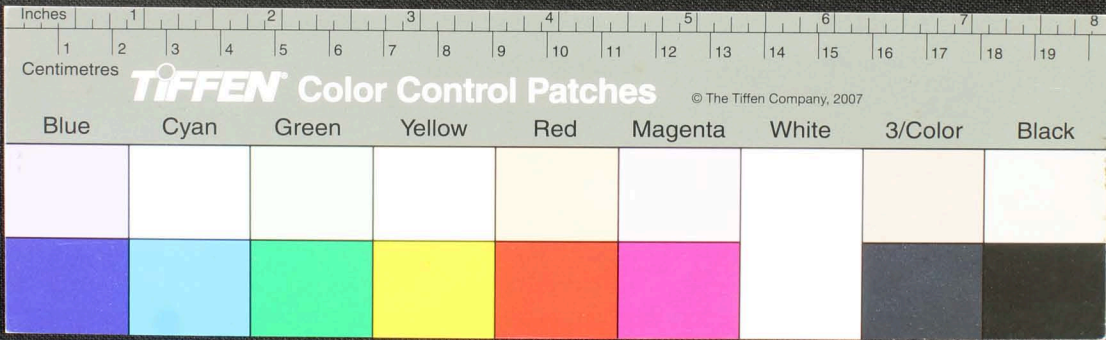
Handwritten Tamil script on a palm leaf manuscript. The text is densely packed in approximately 10 horizontal lines across the length of the leaf. Two circular holes are visible, used for threading a cord to bind multiple leaves together. The script is in an older form of the Tamil language.



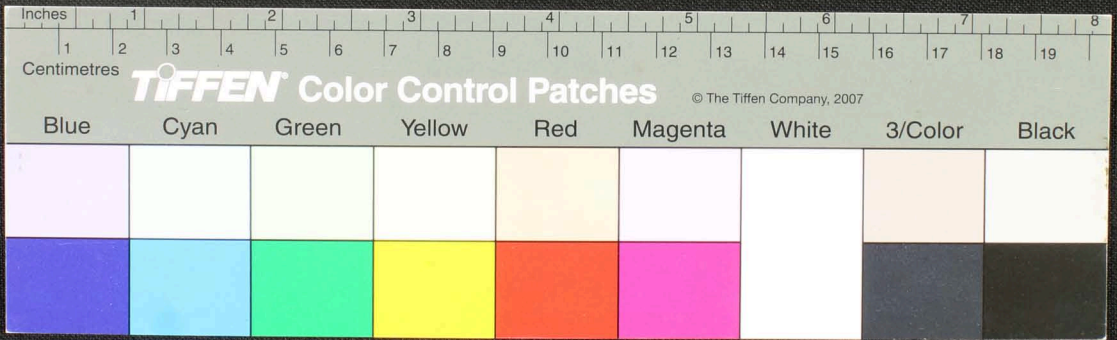
Handwritten Tamil script on a palm leaf manuscript. The text is densely packed and runs horizontally across the length of the leaf. Two circular holes are visible, which were traditionally used for threading a cord to bind multiple leaves together into a book format. The script is in an older form of the Tamil language, likely from the medieval or early modern period.



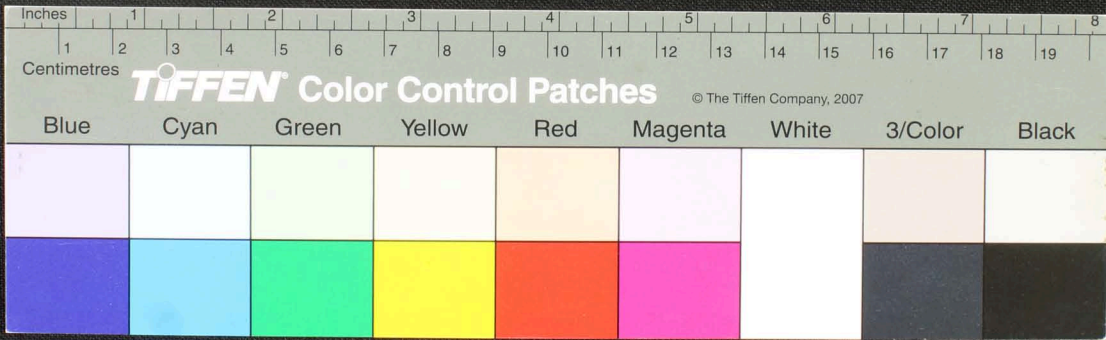
Handwritten text in Tamil script on a palm leaf manuscript. The text is densely packed and spans the length of the leaf. Two circular holes are visible, which were traditionally used for threading a cord to bind multiple leaves together into a book format. The script is in an older form of the Tamil language.



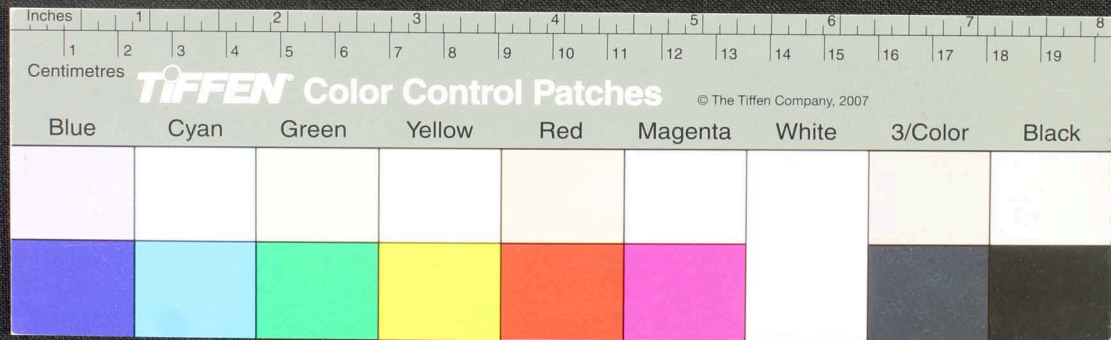
Handwritten Tamil script on a palm leaf manuscript. The text is densely packed and spans the length of the leaf. Two circular holes are visible, which were traditionally used for threading a cord to bind multiple leaves together into a book format. The script is written in a traditional style, with clear letterforms and consistent spacing.



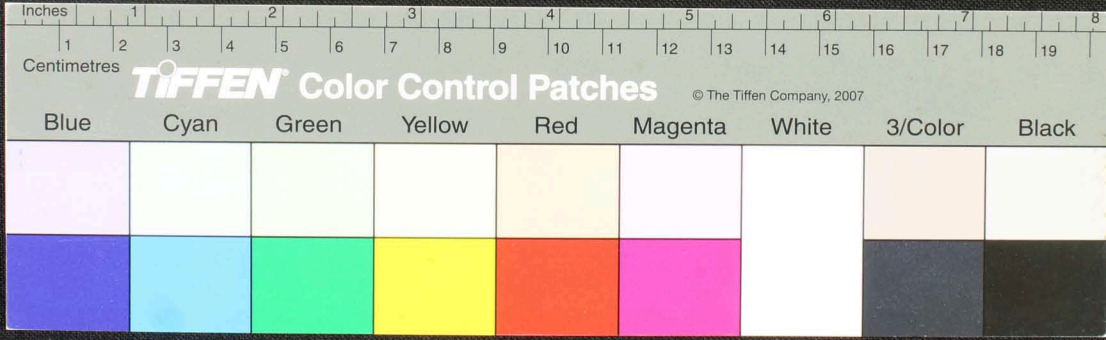
Handwritten Tamil script on a palm leaf manuscript. The text is densely packed and spans the length of the leaf. Two circular holes are visible, used for binding multiple leaves together. The script is written in a traditional style, with clear letterforms and consistent spacing.



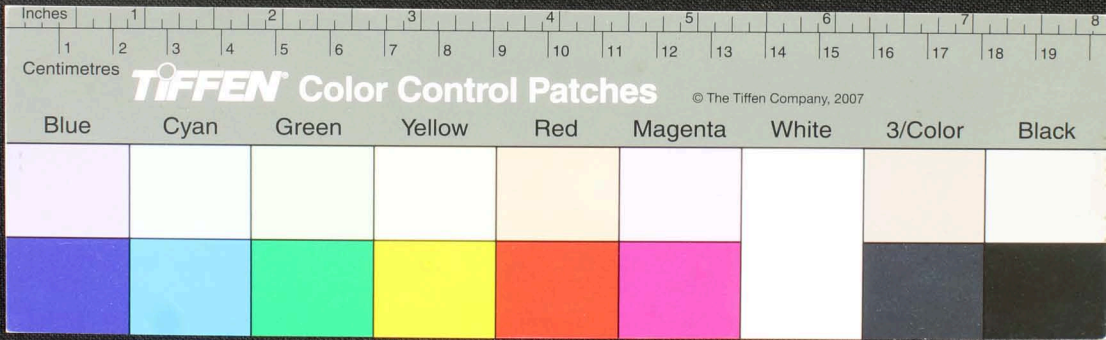
Handwritten text in Tamil script on a palm leaf manuscript. The text is densely packed and runs horizontally across the length of the leaf. There are two circular holes visible, which were traditionally used for threading a cord to bind multiple leaves together into a book format. The leaf shows signs of age, with some discoloration and wear at the edges.



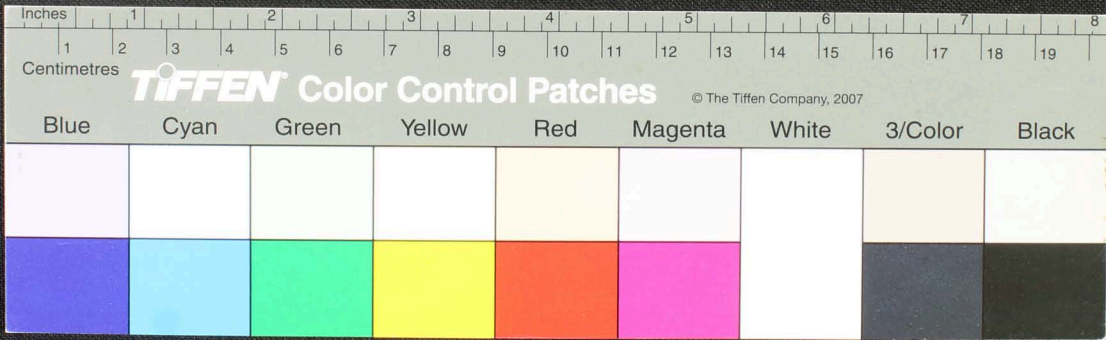
Handwritten Tamil script on a palm leaf manuscript. The text is densely packed and runs horizontally across the length of the leaf. Two circular holes are visible, used for binding multiple leaves together. The script appears to be a form of classical Tamil, possibly containing religious or philosophical content.



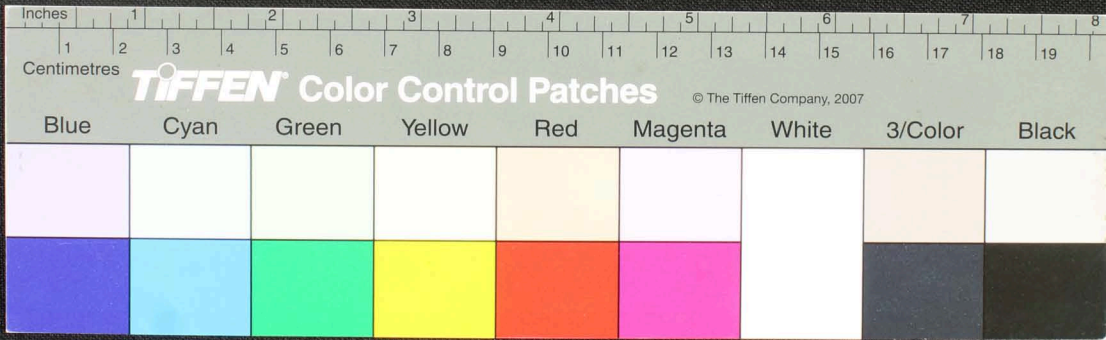
Handwritten text in Tamil script on a palm leaf manuscript. The text is densely packed and spans the length of the leaf. Two circular holes are visible, used for binding multiple leaves together. The script is in an older form of the Tamil language.



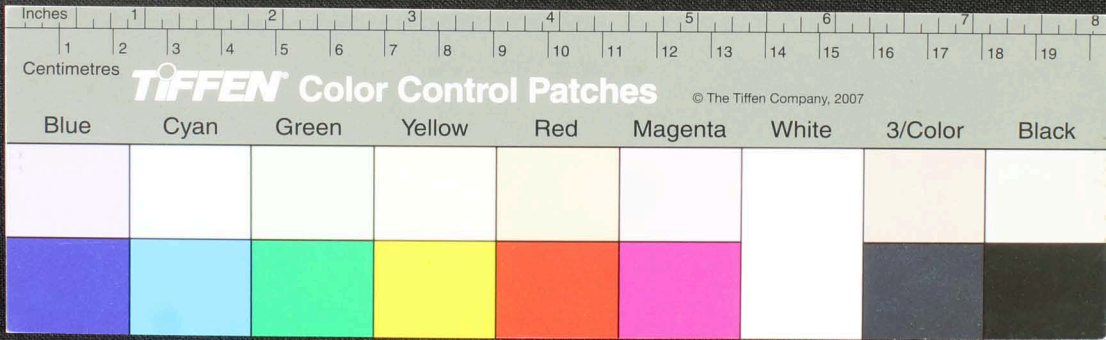
Handwritten Tamil script on a palm leaf manuscript. The text is densely packed and spans the length of the leaf. Two circular holes are visible, which were traditionally used for threading a cord to bind multiple leaves together into a book format. The script is written in a clear, consistent hand.



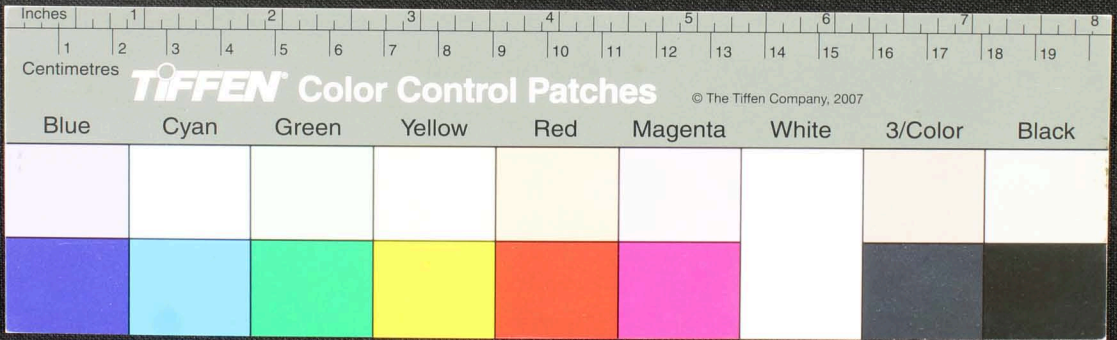
Handwritten text in Tamil script on a palm leaf manuscript. The text is densely packed and spans the length of the leaf. Two circular holes are visible, which were traditionally used for threading a cord to bind multiple leaves together into a book format. The script is in an older form of the Tamil language.



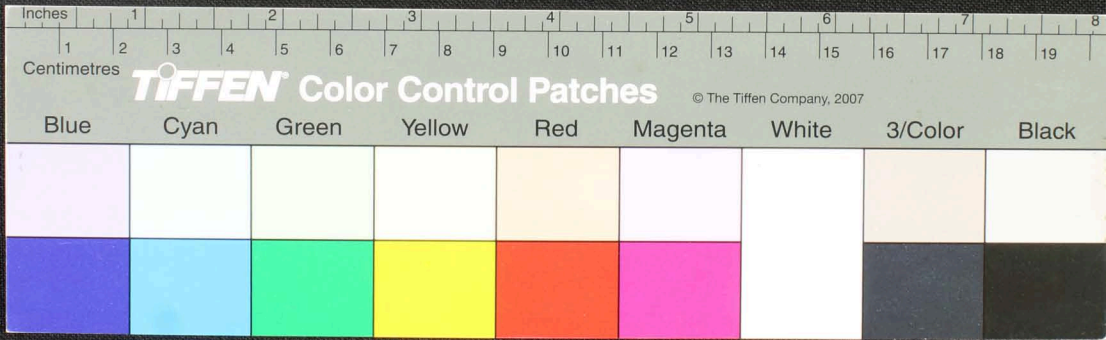
Handwritten text in Tamil script on a palm leaf manuscript. The text is densely packed and spans the length of the leaf. Two circular holes are visible, which were traditionally used for threading a cord to bind multiple leaves together into a book format. The script is in an older form of the Tamil language.



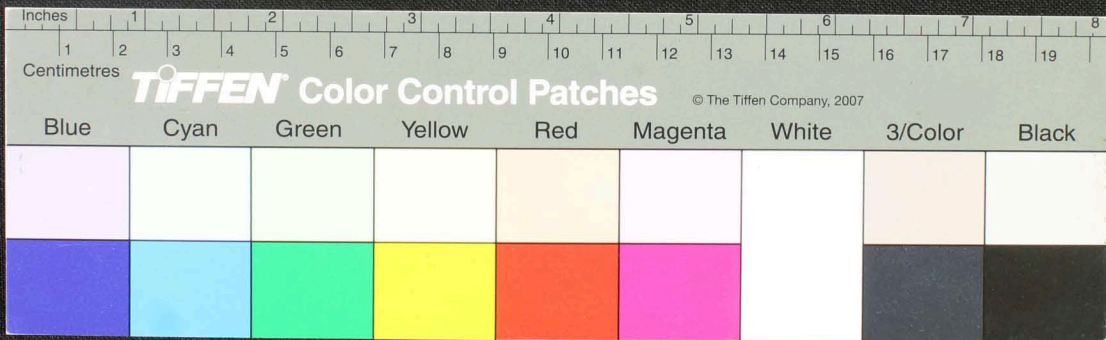
Handwritten Tamil script on a palm leaf manuscript. The text is densely packed and runs horizontally across the length of the leaf. The leaf shows signs of age and wear, with some dark spots and irregular edges. The script is in an older form of the Tamil language.



Handwritten Tamil script on a palm leaf manuscript. The text is arranged in approximately 10 horizontal lines across the length of the leaf. Two circular holes are visible, which were traditionally used for threading a cord to bind multiple leaves together. The script is finely etched into the surface of the dried leaf.



Handwritten text in Tamil script on a palm leaf manuscript strip. The text is written in a cursive style and is partially obscured by two circular holes. The script appears to be a form of historical Tamil, possibly related to a religious or philosophical text.



Handwritten text in Tamil script on a palm leaf manuscript. The text is densely packed and spans the length of the leaf. Two circular holes are visible, which were traditionally used for threading a cord to bind multiple leaves together into a book format. The script is in an older form of the Tamil language.

