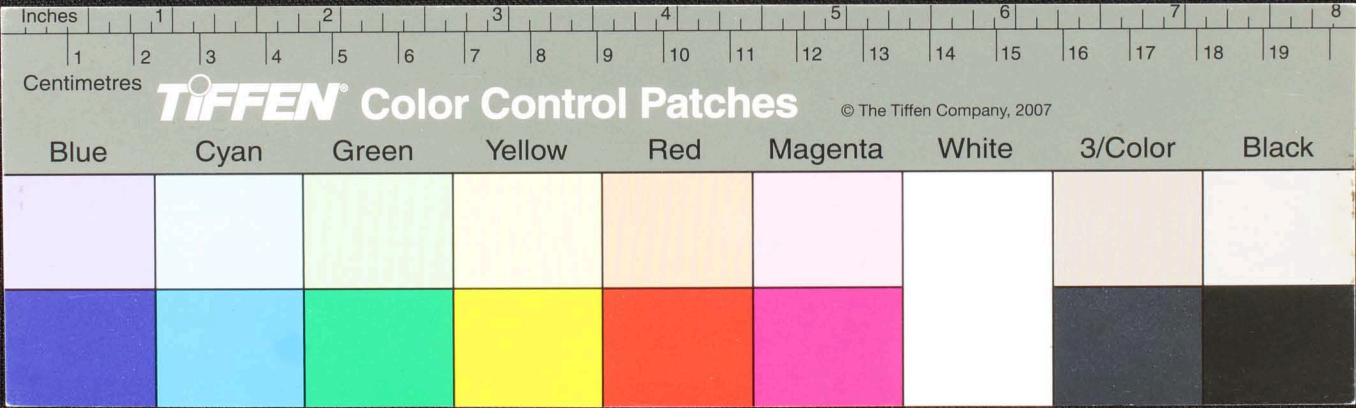
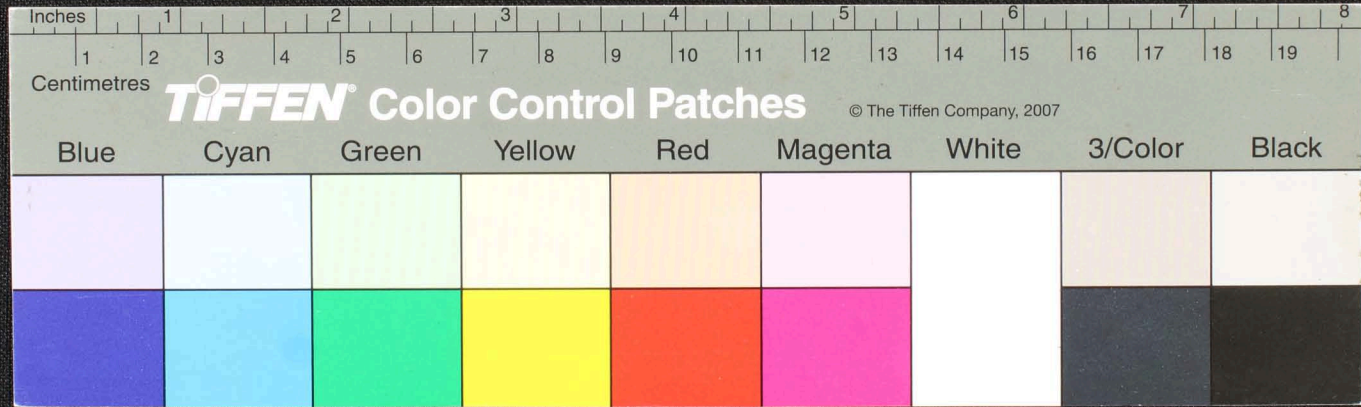


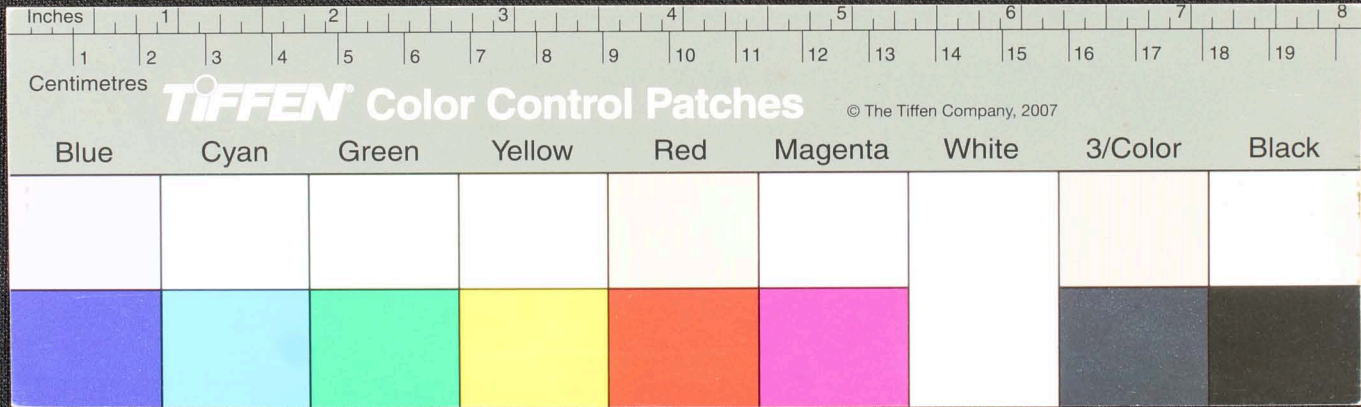
கி.மு. 300-ல் கி.மு. 300-ல் கி.மு. 300-ல் கி.மு. 300-ல் கி.மு. 300-ல் கி.மு. 300-ல் கி.மு. 300-ல் கி.மு. 300-ல்  
 கி.மு. 300-ல் கி.மு. 300-ல் கி.மு. 300-ல் கி.மு. 300-ல் கி.மு. 300-ல் கி.மு. 300-ல் கி.மு. 300-ல் கி.மு. 300-ல்  
 கி.மு. 300-ல் கி.மு. 300-ல் கி.மு. 300-ல் கி.மு. 300-ல் கி.மு. 300-ல் கி.மு. 300-ல் கி.மு. 300-ல் கி.மு. 300-ல்



Handwritten text in Tamil script on a palm leaf manuscript. The text is arranged in approximately four horizontal lines. The script is in an older form of the Tamil language. The leaf has a small dark hole near the center.



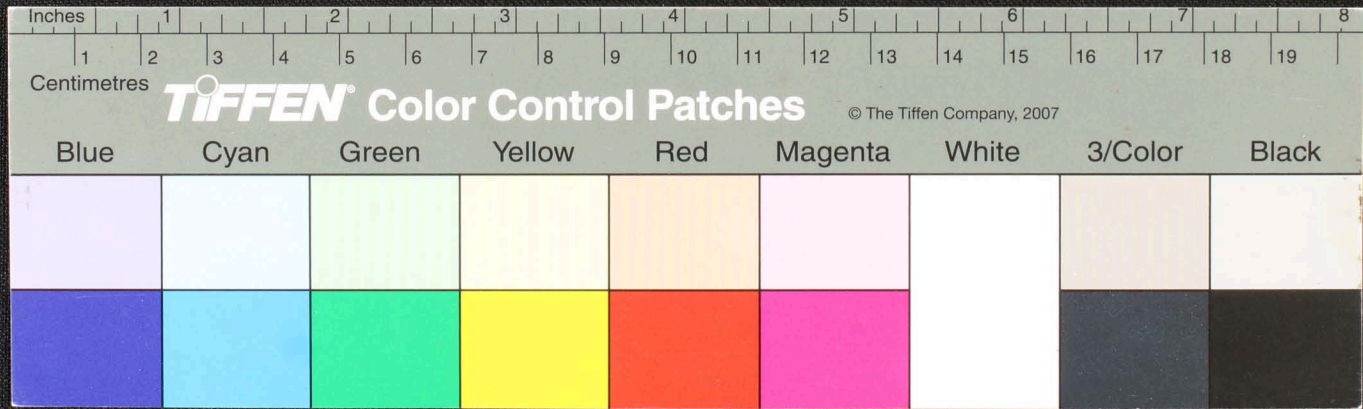
Handwritten Tamil script on a palm leaf manuscript. The text is arranged in approximately 10 horizontal lines. A small circular hole is visible on the left side of the leaf, used for binding multiple leaves together.



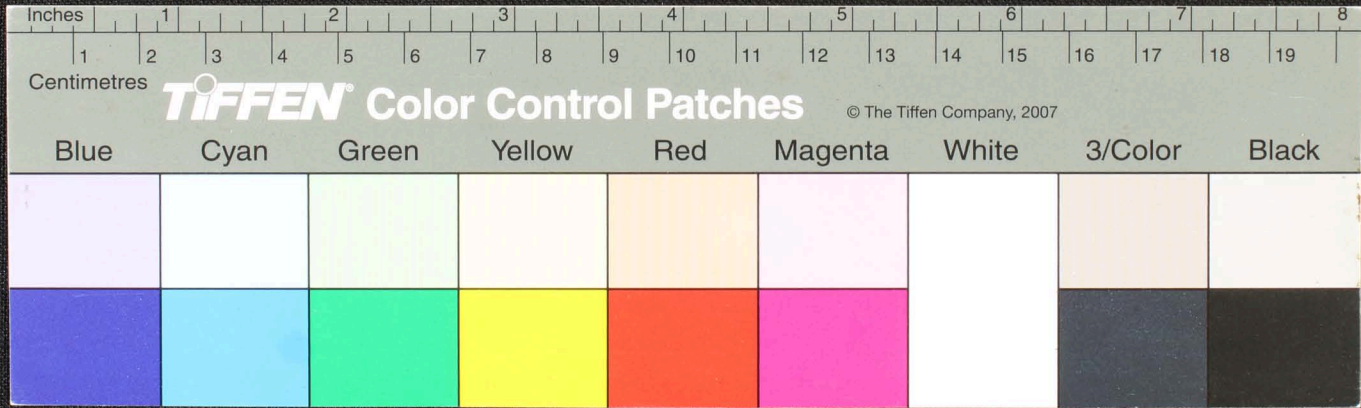




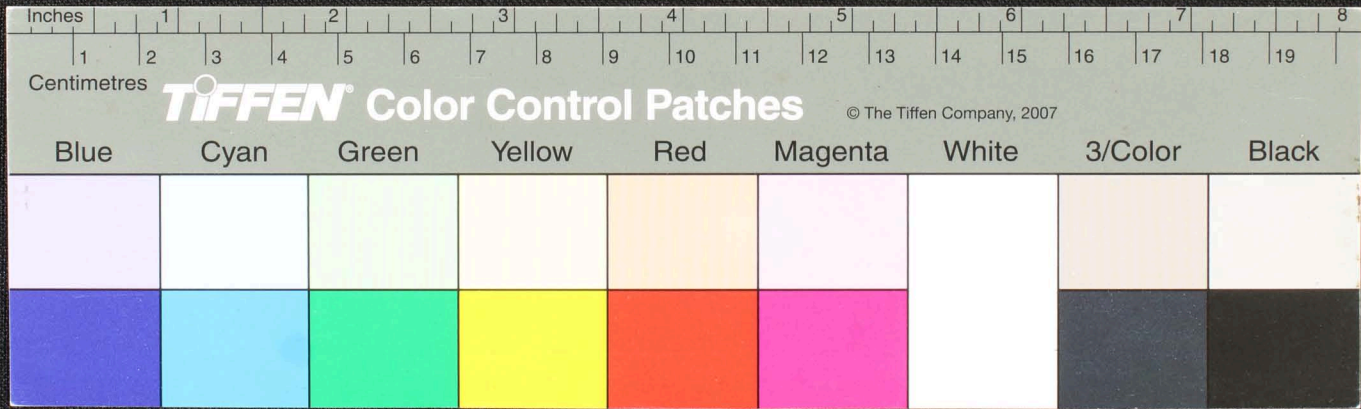
Handwritten text on a palm-leaf manuscript strip, likely in an ancient script. The text is arranged in several lines across the length of the leaf. A small circular hole is visible on the left side of the leaf, used for threading a cord to bind multiple leaves together.



Handwritten text in Tamil script on a yellowed palm leaf manuscript. The text is arranged in several lines across the length of the leaf. A small circular hole is visible near the center of the leaf, used for binding multiple leaves together.

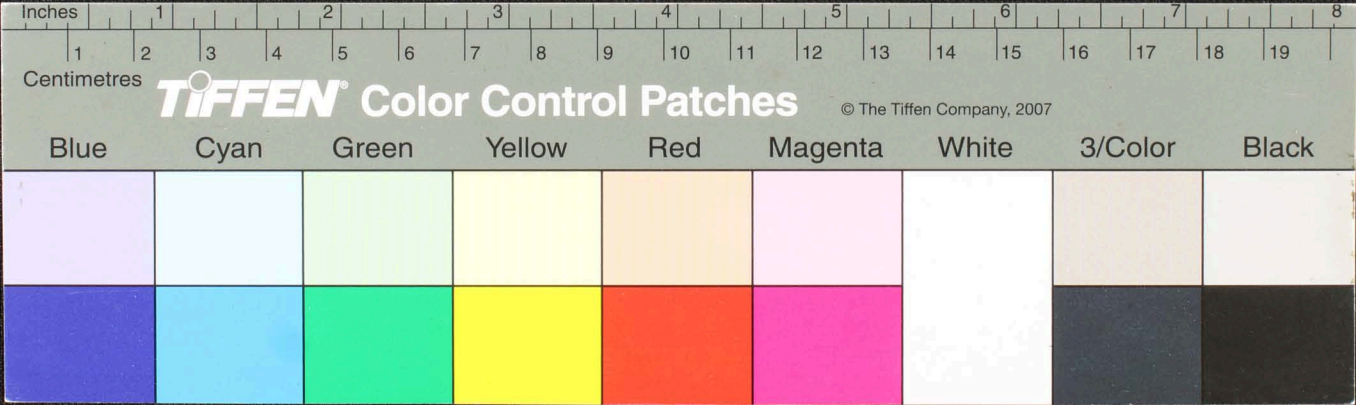


Handwritten text in Tamil script on a palm leaf manuscript. The text is arranged in three horizontal lines. The first line contains approximately 15 characters, the second line contains approximately 20 characters, and the third line contains approximately 15 characters. There is a small dark circular mark on the leaf between the second and third lines of text.

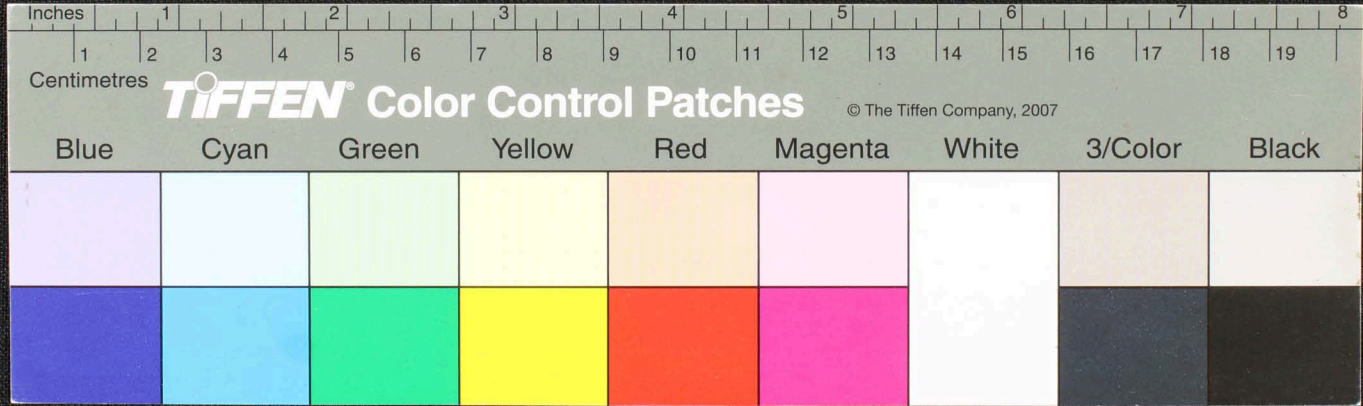


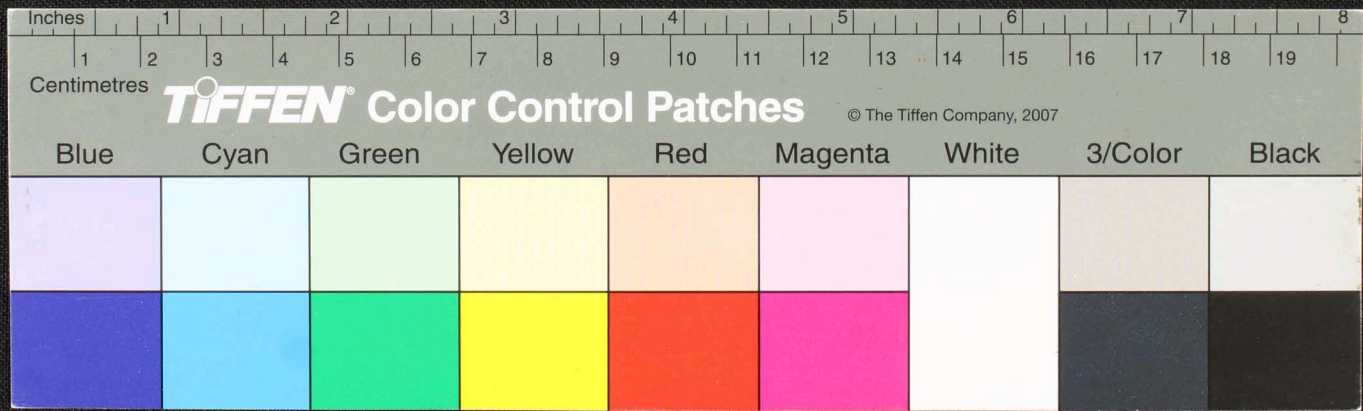


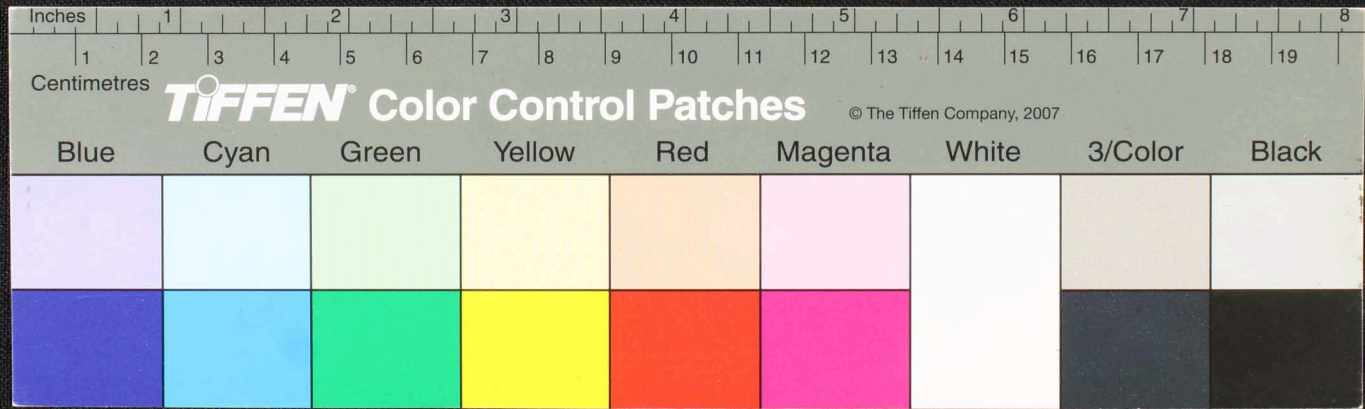
ச. ரவிநிதிநாள்... மகாநாடு...  
 ச. ரவிநிதிநாள்... மகாநாடு...  
 ச. ரவிநிதிநாள்... மகாநாடு...



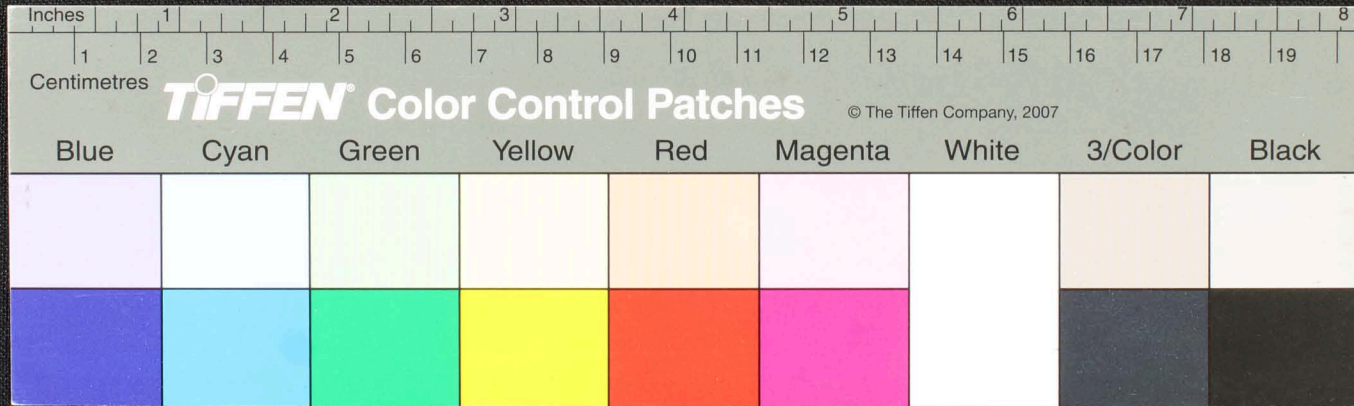
Handwritten text in Tamil script on a yellowed strip of paper. The text is arranged in several lines and includes a prominent black circular mark in the middle. The script is a form of the Tamil language, likely used for administrative or legal purposes.







Handwritten text in Tamil script on a palm leaf manuscript. The text is arranged in several lines across the length of the leaf. The script is a traditional form of the Tamil language, with characters clearly etched into the surface of the dried leaf. The leaf shows signs of age and wear, with some fraying at the right edge and two circular holes, likely from a traditional string binding.



Handwritten Tamil script on a palm leaf manuscript. The text is arranged in approximately 10 horizontal lines. The right side of the leaf is significantly damaged and torn, obscuring the final portion of the script. The script appears to be a form of classical Tamil, possibly including religious or philosophical content.

