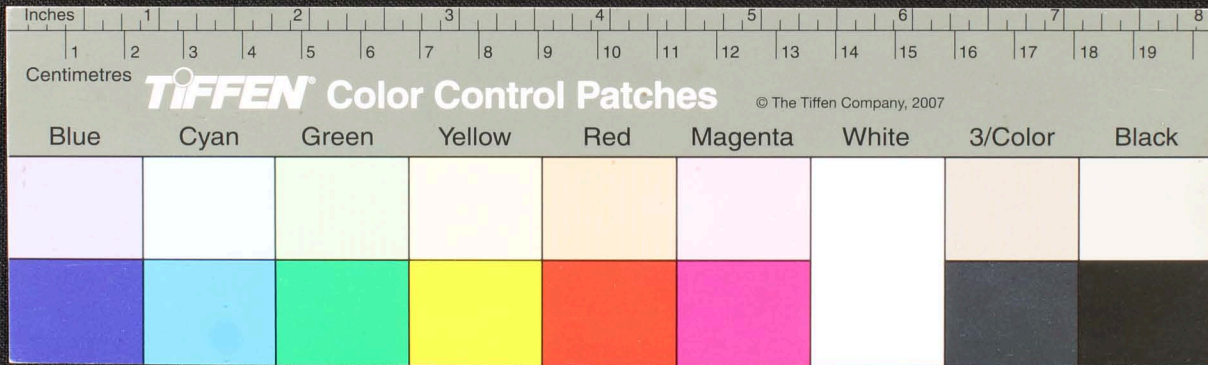
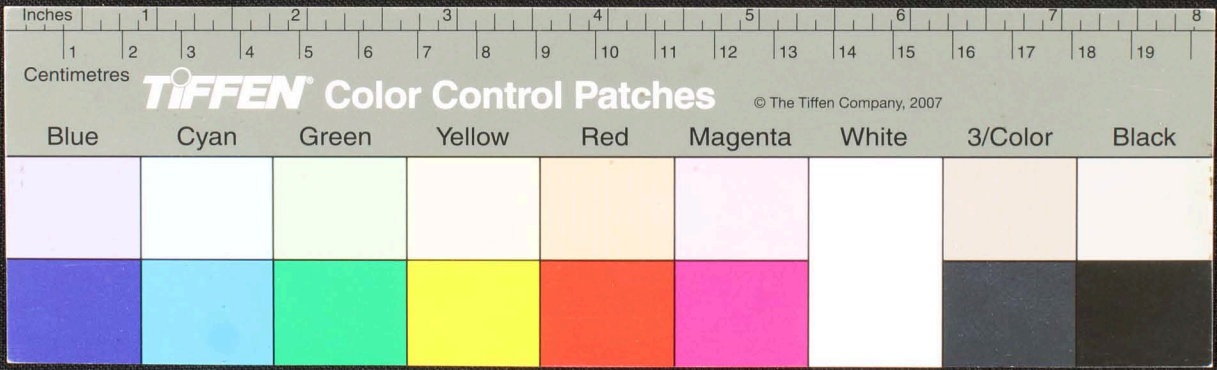


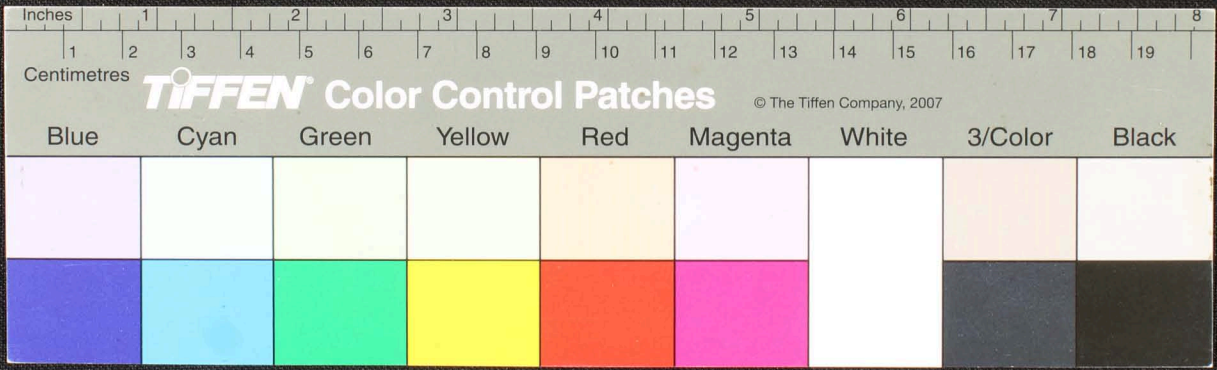
Handwritten Tamil script on a palm leaf manuscript. The text is densely packed and appears to be a historical record or a religious text, possibly related to the Tamil Saiva tradition. The leaf shows signs of age and wear, with some dark spots and a small hole.



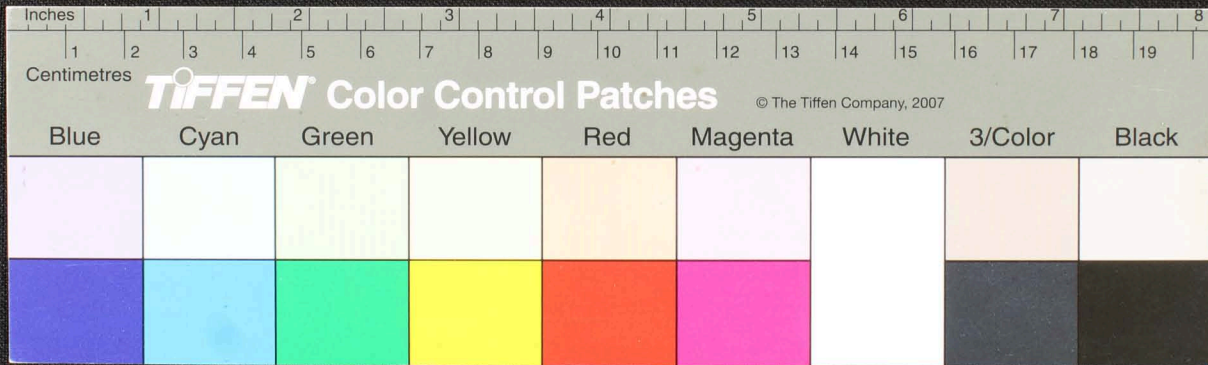
Handwritten Tamil script on a palm leaf manuscript strip. The text is densely packed and spans the entire length of the leaf. The script is in an older form of the Tamil language, with some characters appearing to be in a different script or dialect. The leaf shows signs of age, including dark spots and some damage.



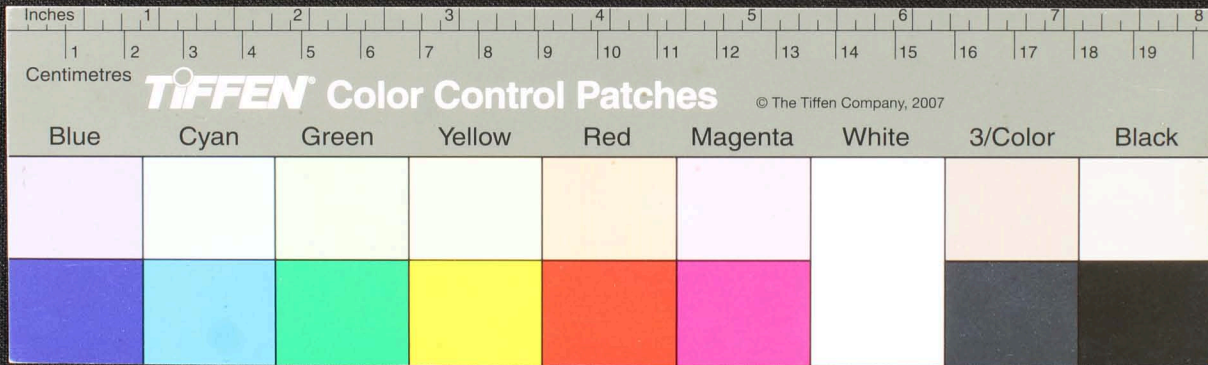
Handwritten Tamil script on a palm leaf manuscript. The text is densely packed and appears to be a historical record or a religious text. The leaf shows signs of age and wear, with some dark spots and a small circular hole near the center.



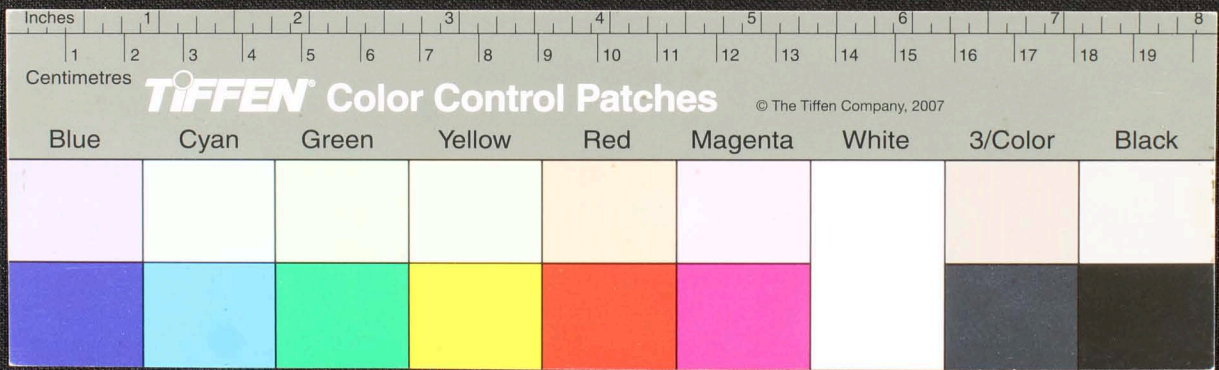
Handwritten Tamil script on a palm leaf manuscript. The text is arranged in approximately 10 horizontal lines across the length of the leaf. The script is densely packed and includes various characters and symbols, some of which are circled or underlined. The leaf shows signs of age, including dark spots and a hole near the center.



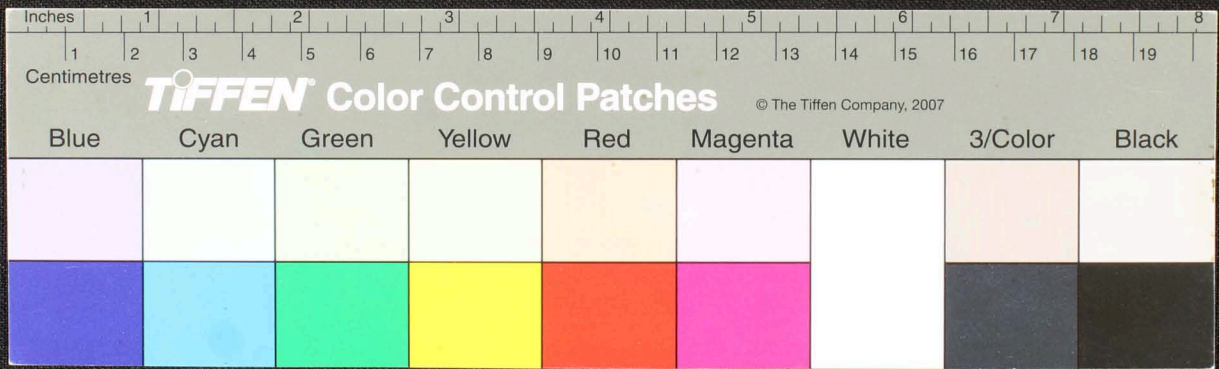
Handwritten text in Tamil script on a yellowed, aged paper strip. The text is densely packed and appears to be a historical record or document, possibly related to land or administrative matters. The paper shows signs of significant wear, including dark stains and a large circular hole near the center.



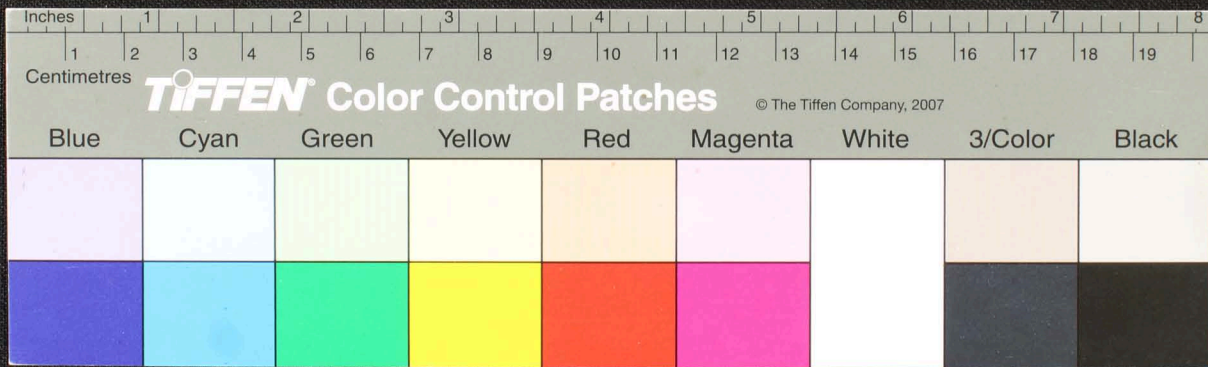
Handwritten text in Tamil script on a palm leaf manuscript. The text is densely packed and appears to be a historical record or a religious text, though the specific content is difficult to decipher due to the script and the condition of the leaf. The leaf shows signs of age, including dark spots and some damage.



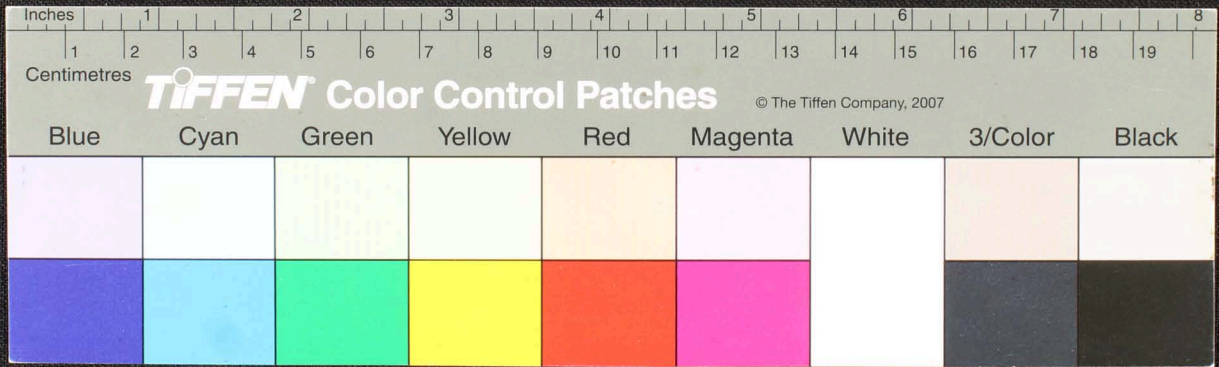
Handwritten Tamil script on a palm leaf manuscript. The text is densely packed and appears to be a historical record or a religious text. The leaf shows signs of age and wear, with some dark spots and a small hole.



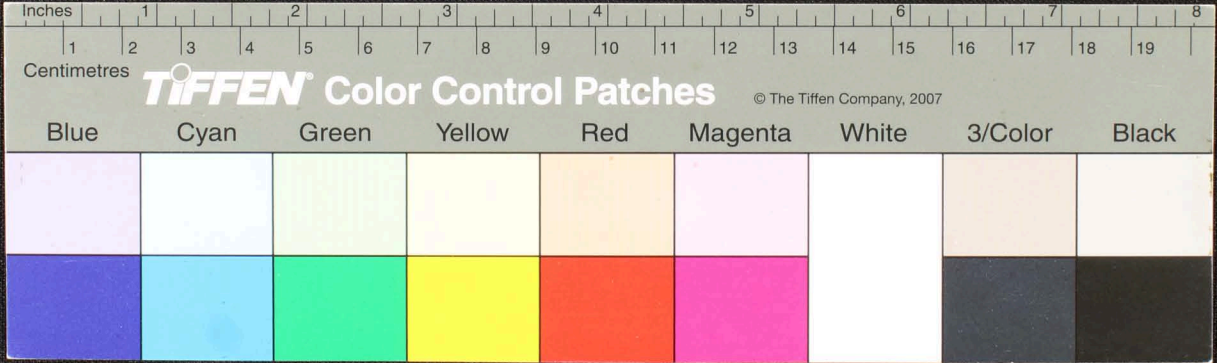
Handwritten Tamil script on a palm leaf manuscript. The text is densely packed and appears to be a historical record or a religious text. The leaf shows signs of age and wear, with some dark spots and a hole near the center.



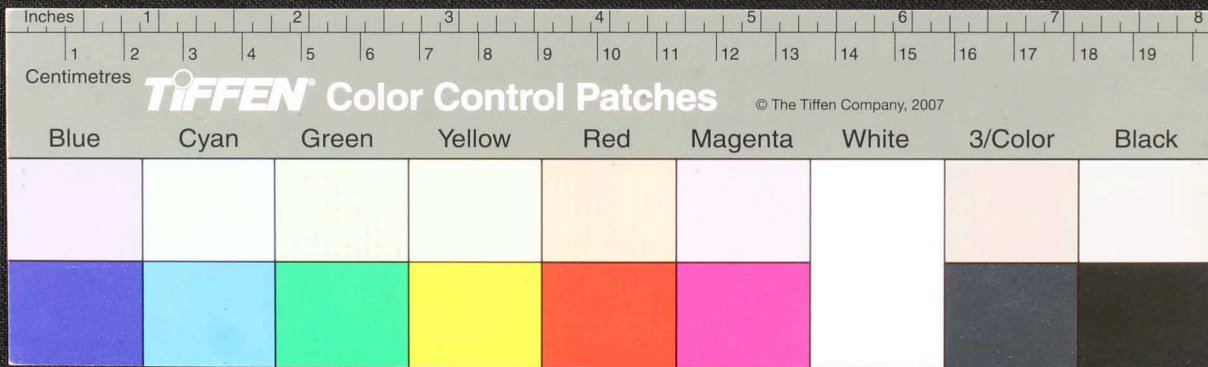
Handwritten Tamil script on a palm leaf manuscript. The text is densely packed and spans the length of the leaf. It appears to be a historical record or a religious text, given the context of such artifacts. The script is written in a traditional style, with some characters that are characteristic of older Tamil inscriptions. The leaf shows signs of age, including some dark spots and a slightly uneven texture.



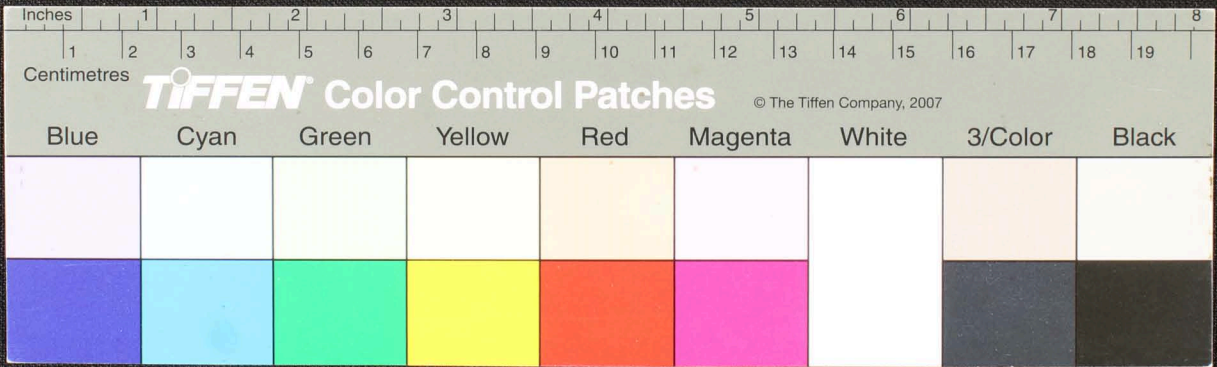
Handwritten Tamil script on a palm leaf manuscript. The text is densely packed and appears to be a historical record or a list of items, possibly related to a temple or a royal court. The leaf shows signs of age and wear, with some dark spots and a hole near the center.



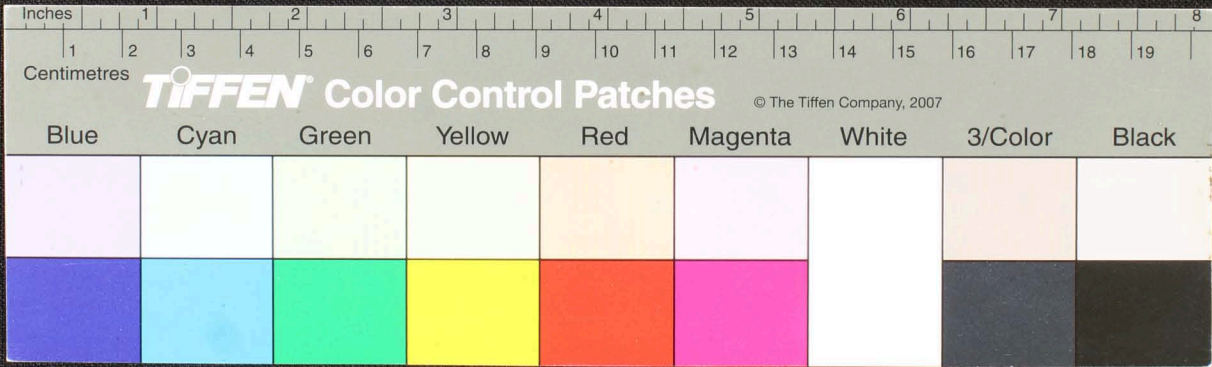
Handwritten text in Tamil script on a palm leaf manuscript. The text is arranged in approximately 10 horizontal lines across the length of the leaf. The script is dense and appears to be a form of classical or historical Tamil. There are some dark spots and irregularities on the leaf, possibly due to age or damage.



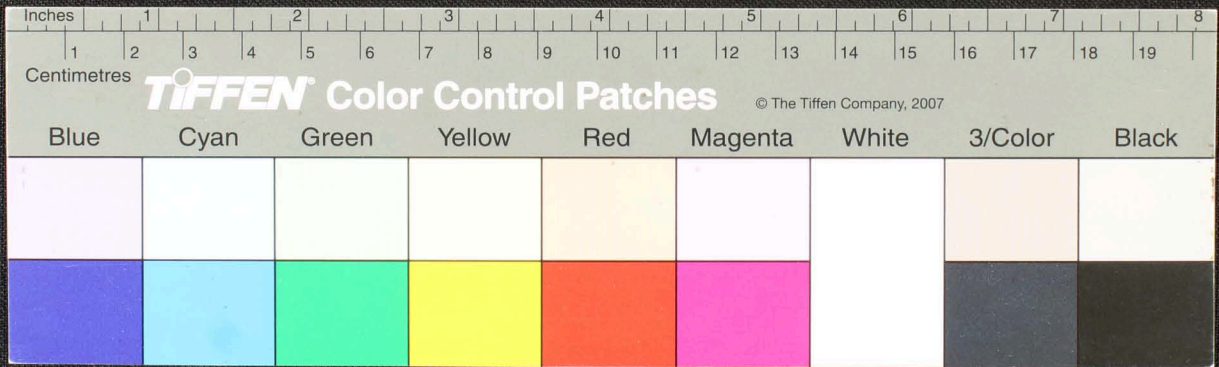
Handwritten Tamil script on a palm leaf manuscript. The text is arranged in approximately 10 horizontal lines across the length of the leaf. The script is densely packed and appears to be a form of classical or historical Tamil. There are several small holes and signs of wear on the leaf, particularly a prominent circular hole on the left side and some irregular damage on the right. The leaf is yellowed with age and is set against a dark background.



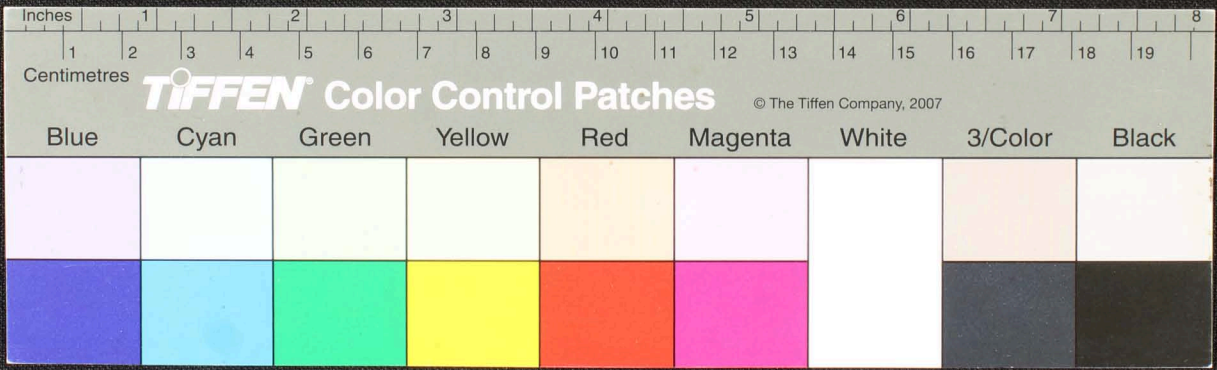
Handwritten Tamil script on a palm leaf manuscript. The text is arranged in approximately 10 horizontal lines. On the left side, there are three lines of text that appear to be a title or header, possibly including the name of the author or the subject of the work. The main body of text consists of several lines of dense script, likely representing a historical record or a religious text. The leaf shows signs of age, with some dark spots and wear, particularly a large dark stain in the middle section.



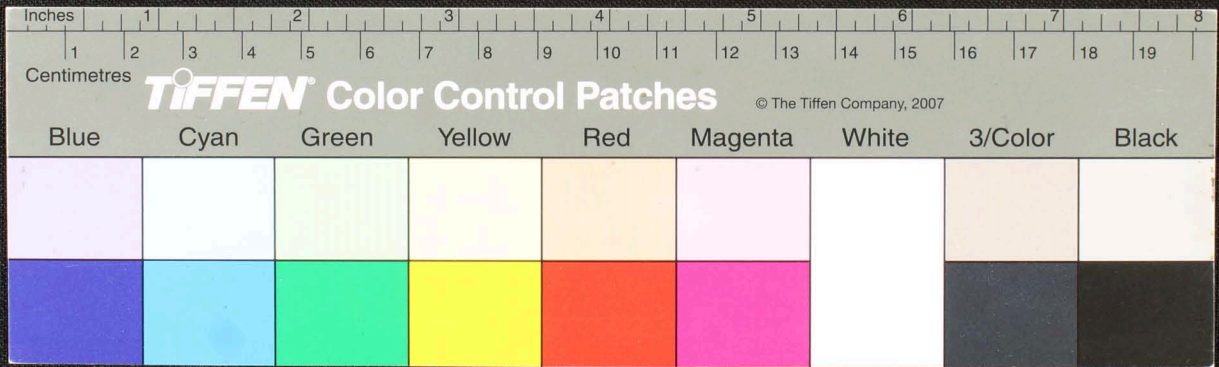
Handwritten Tamil script on a palm leaf manuscript. The text is densely packed and appears to be a historical record or a list of items, possibly related to a temple or a royal court. The script is written in a traditional style, with some characters being more stylized than others. The leaf shows signs of age, with some dark spots and a slightly uneven texture.



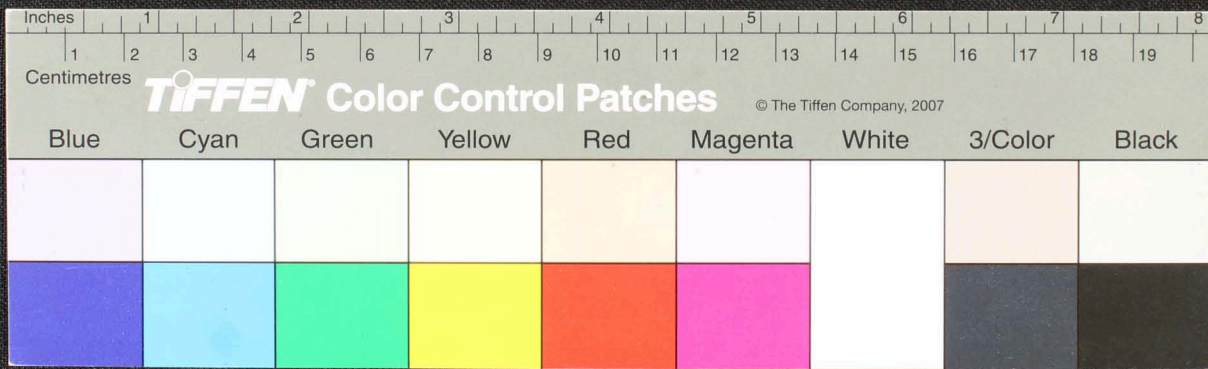
Handwritten text in Tamil script on a palm leaf manuscript. The text is densely packed and appears to be a historical record or a list of items, possibly related to a temple or a community. The script is in an older form of the Tamil language. The leaf shows signs of age, including a dark circular hole and some staining.



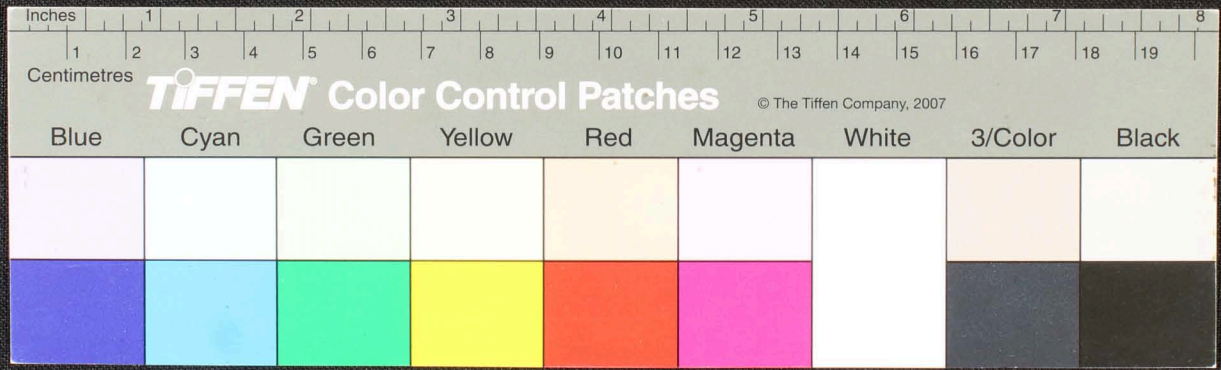
Handwritten Tamil script on a palm leaf manuscript. The text is densely packed and appears to be a historical record or a religious text. The leaf shows signs of age, including dark spots and some damage.



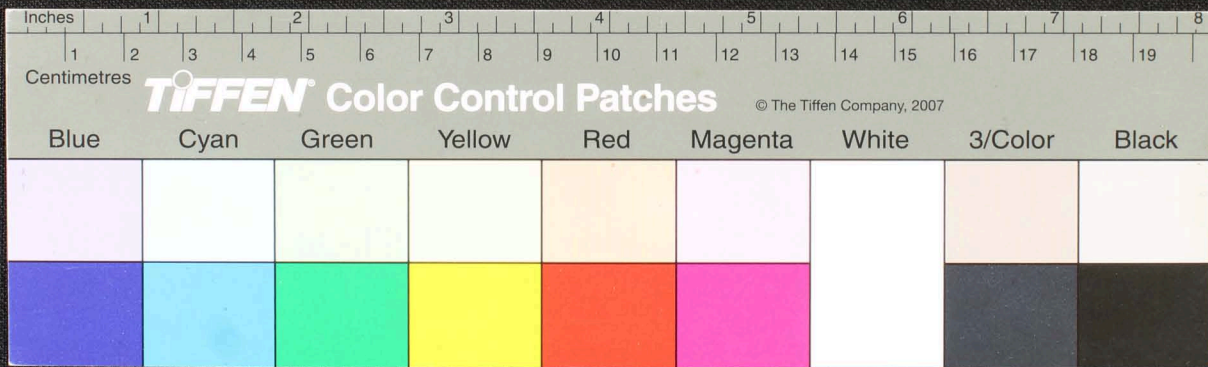
Handwritten Tamil script on a palm leaf manuscript. The text is densely packed and spans the length of the leaf. It appears to be a historical record or a religious text, given the context of such artifacts. The script is written in a traditional style, with some characters that are characteristic of older Tamil inscriptions. The leaf shows signs of age, including some dark spots and a slightly uneven texture.



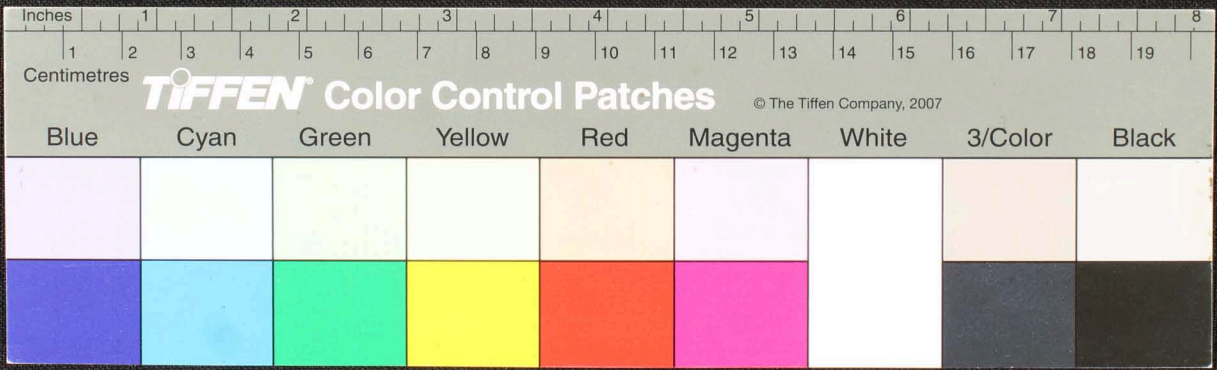
Handwritten Tamil script on a palm leaf manuscript. The text is arranged in approximately 10 horizontal lines across the length of the leaf. The script is densely packed and appears to be a form of classical or religious Tamil. There are several dark, irregular spots and marks on the leaf, possibly due to insect damage or water damage, which partially obscure the text in some areas.



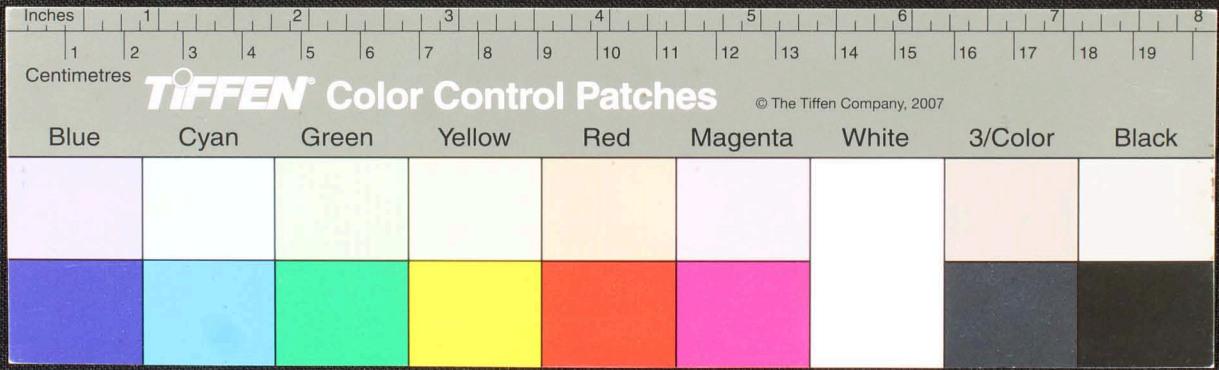
Handwritten Tamil script on a palm leaf manuscript. The text is arranged in approximately 10 horizontal lines across the length of the leaf. The script is densely packed and appears to be a form of classical or historical Tamil. There are some dark spots and irregularities on the leaf, possibly due to age or damage.



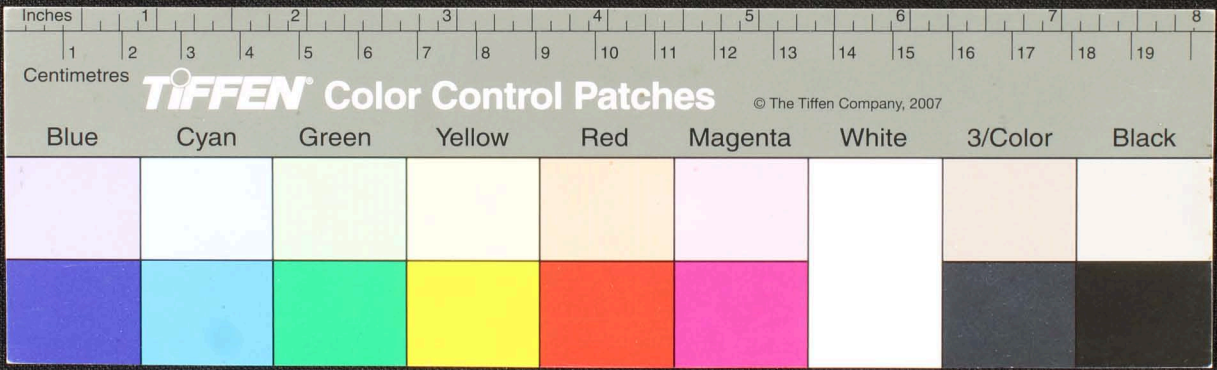
Handwritten Tamil script on a palm leaf manuscript. The text is arranged in approximately 10 horizontal lines. The script is densely packed and appears to be a form of classical or historical Tamil. There are some dark spots and irregularities on the leaf, possibly due to age or damage. The leaf is yellowish-brown in color.



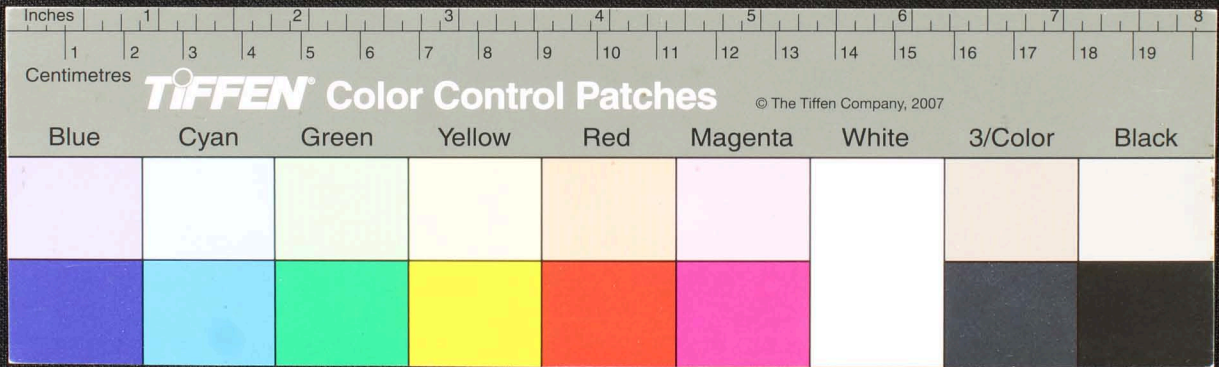
Handwritten Tamil script on a palm leaf manuscript. The text is densely packed and spans the entire length of the leaf. It appears to be a historical record or a religious text, given the context of such artifacts. The script is written in a traditional style, with some characters that are characteristic of older Tamil inscriptions. There are some dark spots and signs of wear on the leaf, particularly a large circular mark near the center.



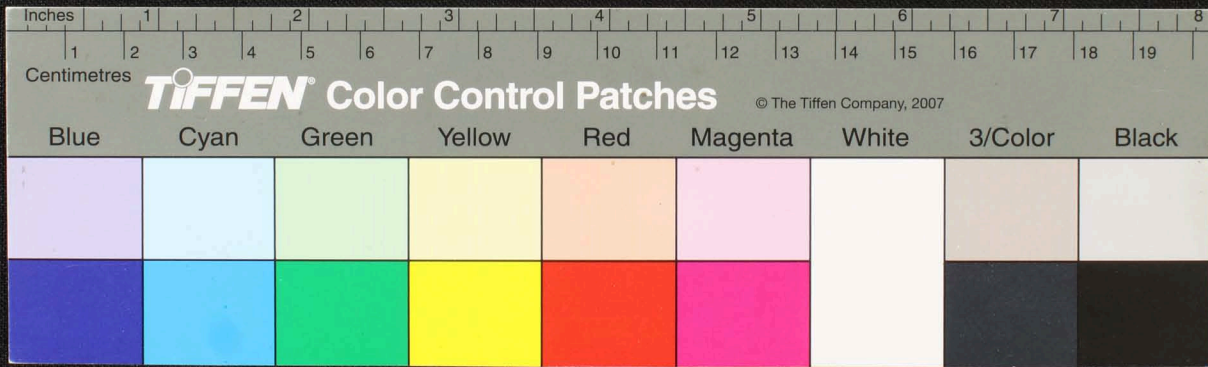
Handwritten Tamil script on a palm leaf manuscript. The text is densely packed and spans the length of the leaf. It appears to be a historical record or a religious text, given the context of such artifacts. The script is written in a traditional style, with some characters that are characteristic of older Tamil inscriptions. The leaf shows signs of age, with some discoloration and wear, particularly a dark circular mark near the center.



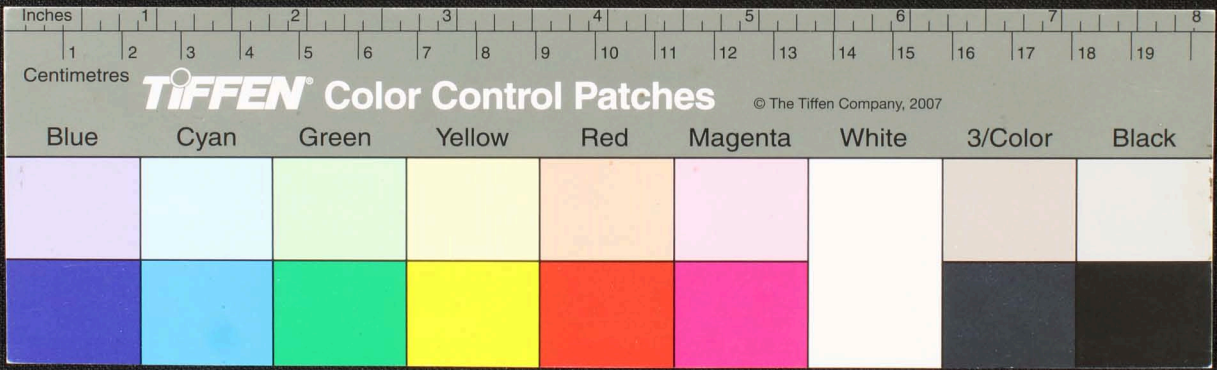
Handwritten Tamil script on a palm leaf manuscript. The text is densely packed and spans the length of the leaf. There are several dark spots and holes, likely from insect damage or wear. The script is written in a traditional style with some variations in character forms.



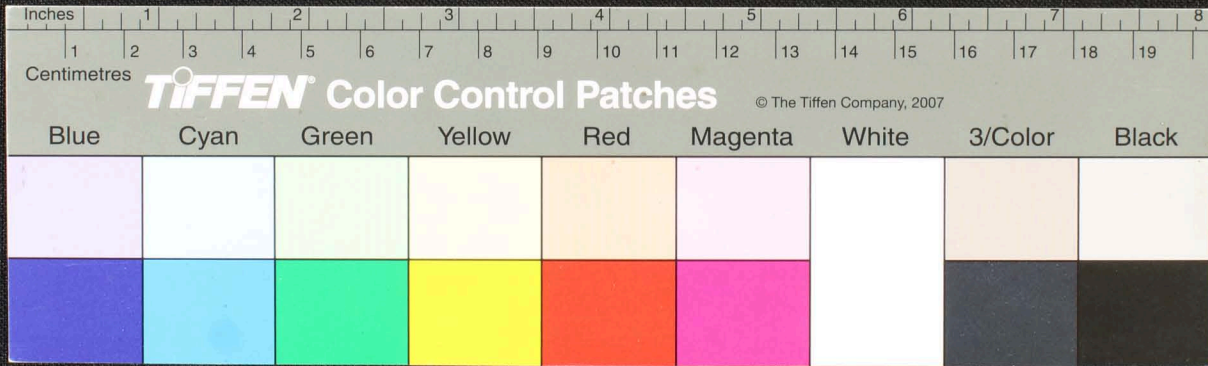
Handwritten Tamil script on a palm leaf manuscript. The text is arranged in approximately 10 horizontal lines across the length of the leaf. The script is finely etched into the surface of the dried leaf. There are some dark spots and irregularities on the leaf, possibly due to age or environmental factors. The text appears to be a form of classical or historical Tamil, possibly including religious or philosophical content.



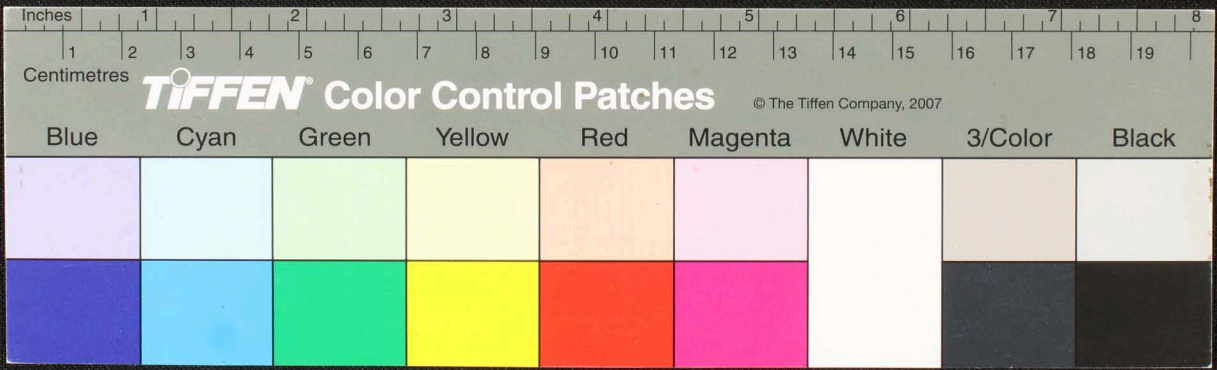
Handwritten Tamil script on a palm leaf manuscript. The text is arranged in approximately 10 horizontal lines across the length of the leaf. The script is finely etched into the surface of the dried leaf. The leaf shows signs of age, including some dark spots and a small hole near the center.



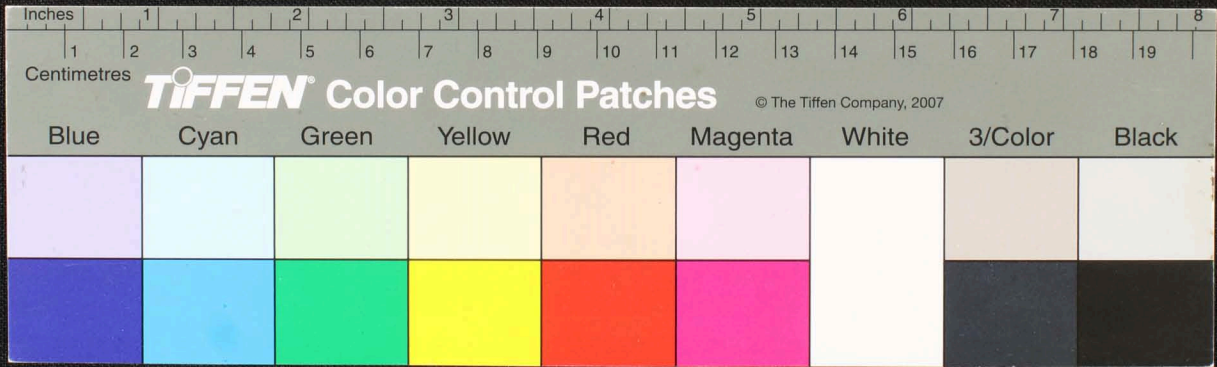
Handwritten Tamil script on a palm leaf manuscript. The text is arranged in approximately 10 horizontal lines across the length of the leaf. The script is densely packed and includes several large, bold characters that may represent specific words or markers. The leaf shows signs of age, with some darkening and wear, particularly towards the right end.



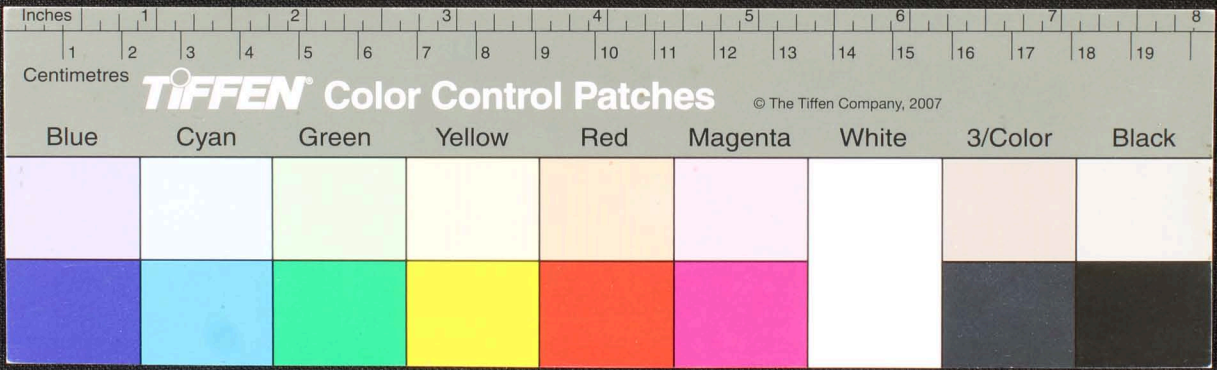
Handwritten Tamil script on a palm leaf manuscript. The text is arranged in approximately 10 horizontal lines across the length of the leaf. The script is densely packed and includes various characters and symbols, some of which appear to be decorative or specific to the dialect. The leaf shows signs of age, including a prominent circular hole and some staining.



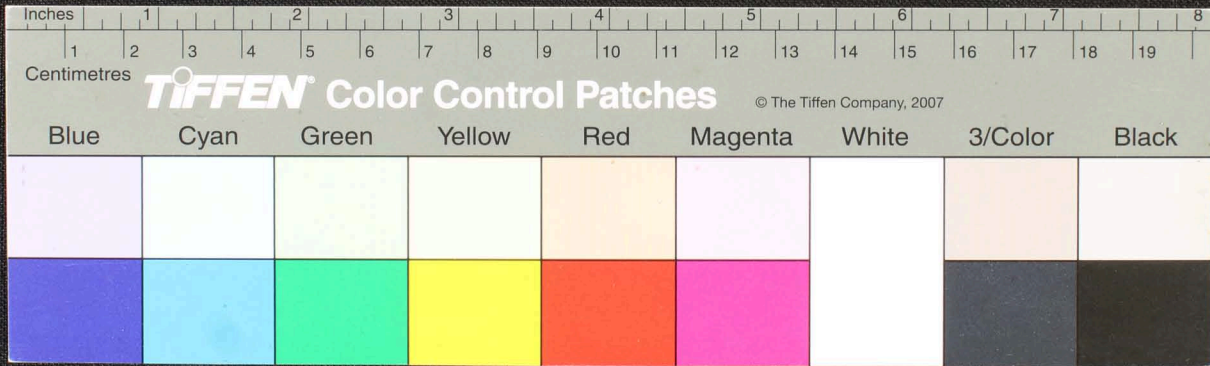
Handwritten Tamil script on a palm leaf manuscript. The text is arranged in approximately 10 horizontal lines across the length of the leaf. The script is finely etched into the surface of the dried leaf. There are some dark spots and a hole on the leaf, likely due to age or insect damage.



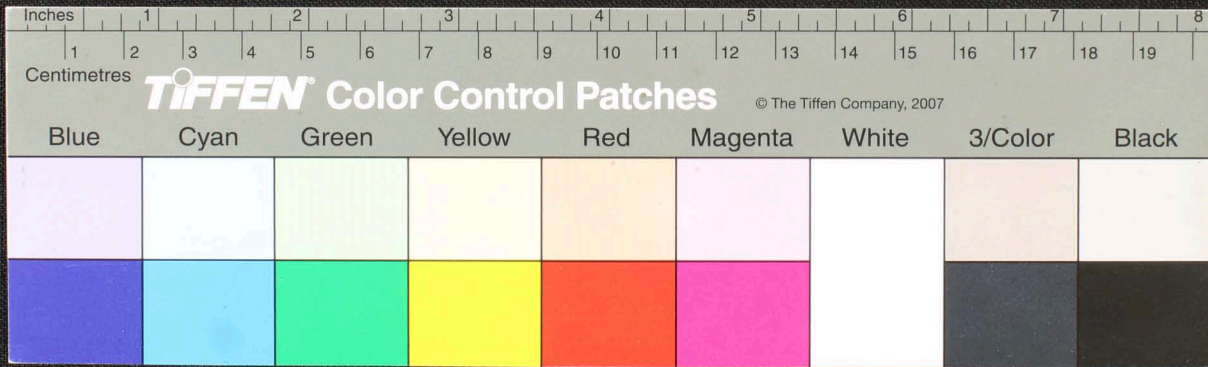
Handwritten Tamil script on a palm leaf manuscript. The text is arranged in approximately 10 horizontal lines across the length of the leaf. The script is densely packed and appears to be a form of classical or historical Tamil. There are some dark spots and irregularities on the leaf, possibly due to age or damage.



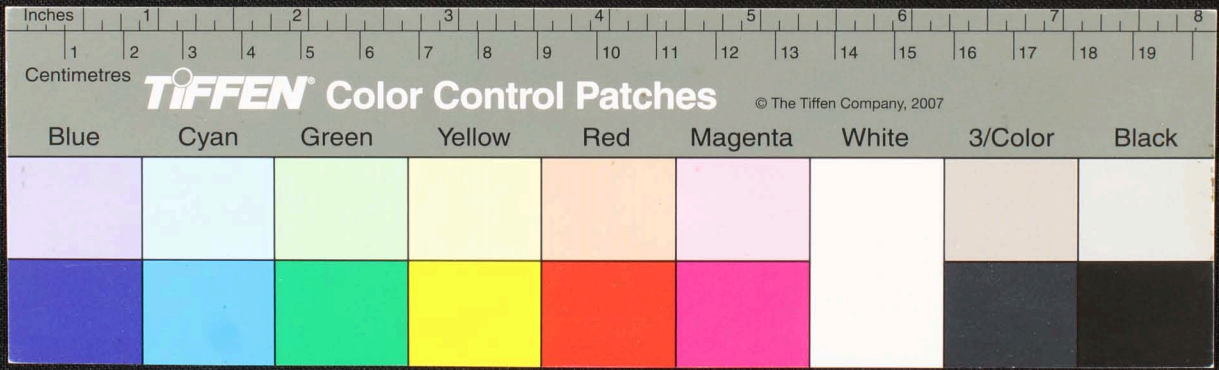
Handwritten Tamil script on a palm leaf manuscript. The text is arranged in approximately 10 horizontal lines across the length of the leaf. The script is finely etched into the surface of the dried leaf. The leaf shows signs of age, including dark spots and some surface wear.



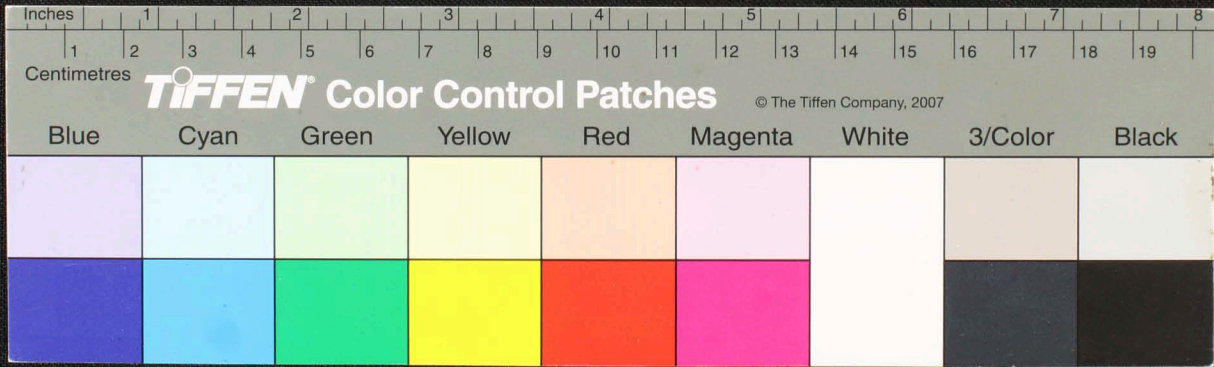
Handwritten text in Tamil script on a palm leaf manuscript. The text is arranged in approximately 10 horizontal lines across the length of the leaf. The script is dense and appears to be a form of classical or historical Tamil. There are some dark spots and signs of wear on the leaf, particularly a large dark mark near the center.



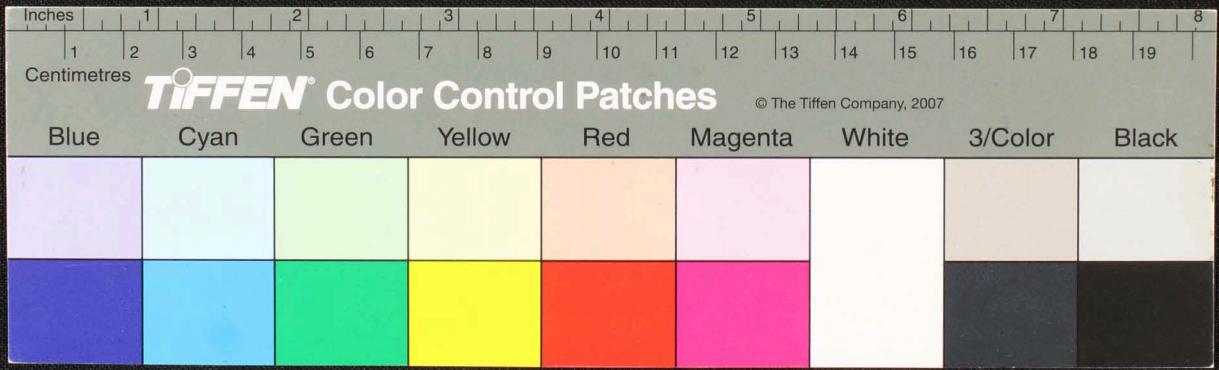
Handwritten Tamil script on a palm leaf manuscript. The text is arranged in approximately 10 horizontal lines across the length of the leaf. The script is densely packed and appears to be a form of classical or historical Tamil. There are some dark spots and irregularities on the leaf, possibly due to age or damage.



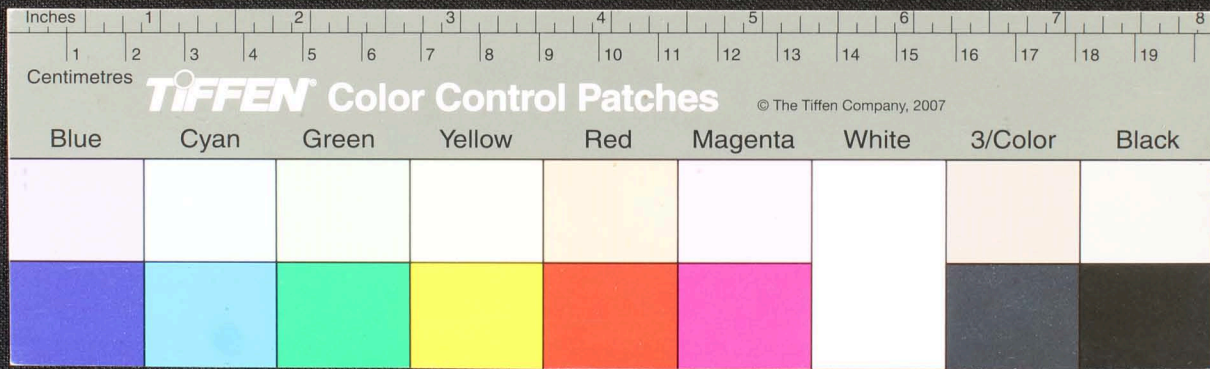
Handwritten Tamil script on a palm leaf manuscript. The text is arranged in approximately 10 horizontal lines across the length of the leaf. The script is densely packed and appears to be a form of classical or historical Tamil. The leaf shows signs of age, including some dark spots and a small hole near the center.



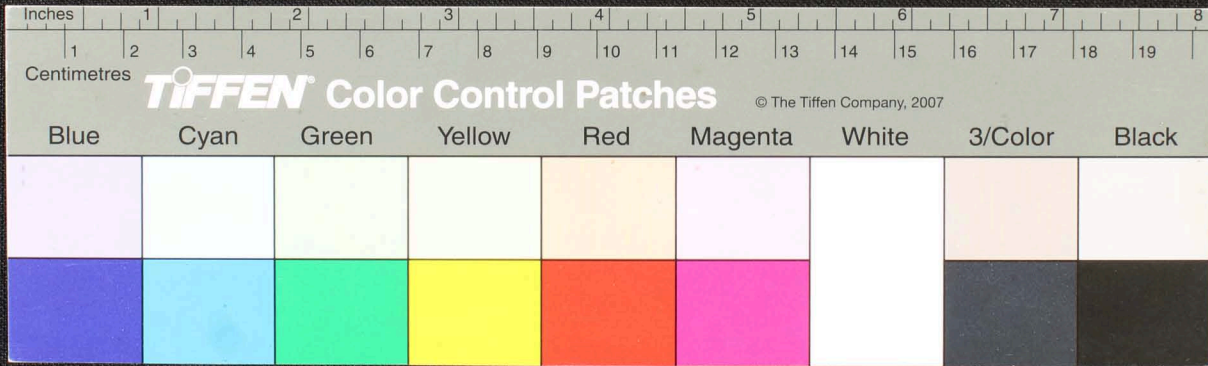
Handwritten Tamil script on a palm leaf manuscript. The text is arranged in approximately four horizontal lines. The script is finely etched into the surface of the dried leaf. The first line contains the most legible characters, including 'வரலாறு' (History) and 'புத்தகம்' (Book). The subsequent lines contain more text, though some characters are less distinct due to fading and the texture of the leaf. The leaf shows signs of age, with some dark spots and a slightly uneven surface.



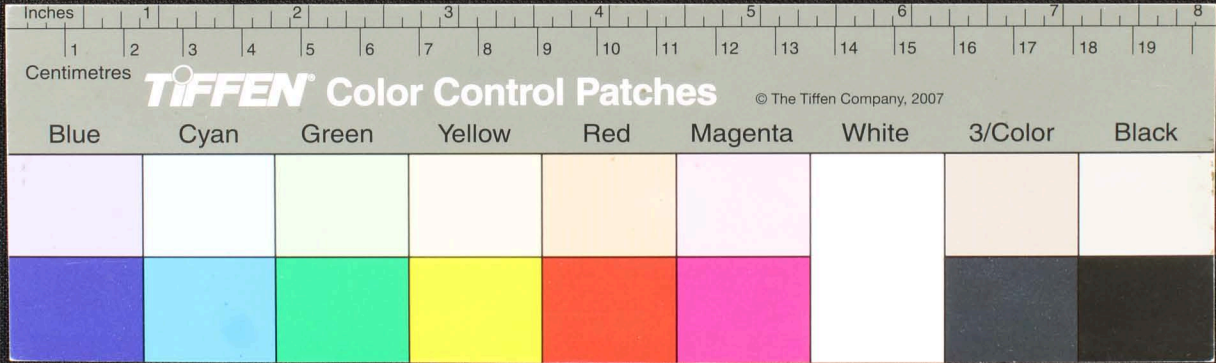
Handwritten Tamil script on a palm leaf manuscript. The text is arranged in approximately 10 horizontal lines across the length of the leaf. The script is finely etched into the surface of the dried leaf. There are some dark spots and irregularities on the leaf, possibly due to age or environmental factors.



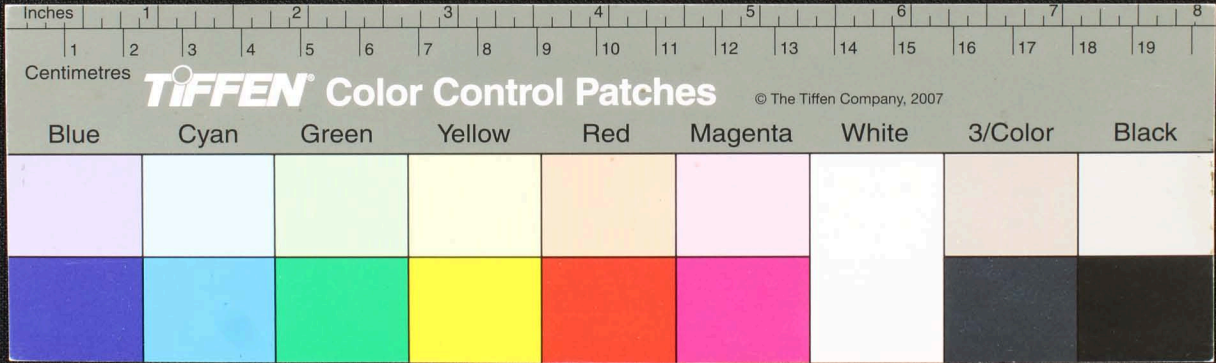
Handwritten text in Tamil script on a palm leaf manuscript. The text is arranged in several lines across the length of the leaf. A prominent circular hole is visible in the center of the leaf, which is a traditional feature for threading a cord to bind multiple leaves together into a book format. The script is finely etched into the surface of the dried leaf.



Handwritten Tamil script on a palm leaf manuscript. The text is arranged in approximately 10 horizontal lines across the length of the leaf. The script is in an older form of the Tamil language. The leaf shows signs of age, including dark spots and some physical damage, particularly on the left side.



Handwritten text in Tamil script on a palm leaf manuscript, showing several lines of text with some damage on the left side.

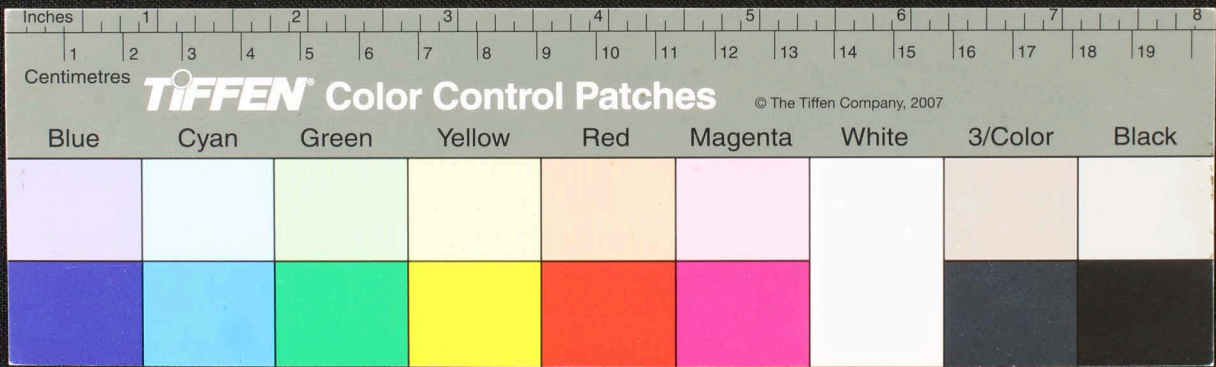


Inches 1 2 3 4 5 6 7 8
Centimetres 1 2 3 4 5 6 7 8 9 10 11 12 13 14 15 16 17 18 19

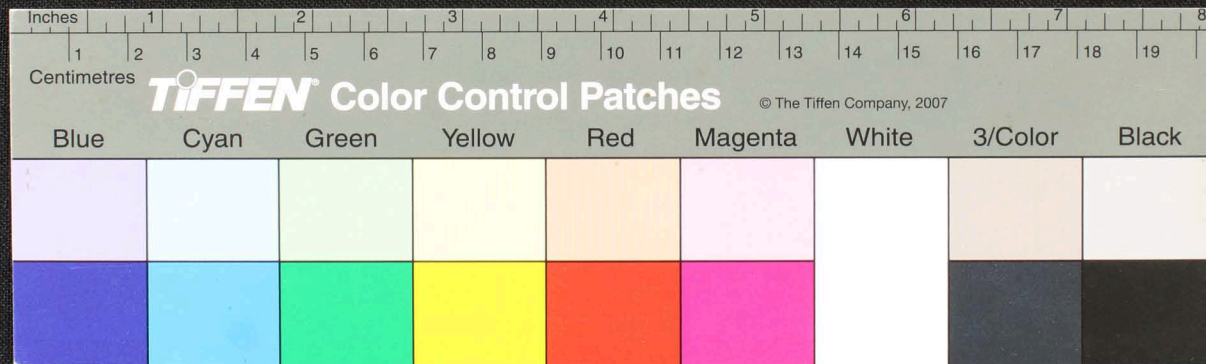
TIFFEN Color Control Patches © The Tiffen Company, 2007

Blue	Cyan	Green	Yellow	Red	Magenta	White	3/Color	Black
[Blue patch]	[Cyan patch]	[Green patch]	[Yellow patch]	[Red patch]	[Magenta patch]	[White patch]	[3/Color patch]	[Black patch]
[Dark Blue patch]	[Dark Cyan patch]	[Dark Green patch]	[Dark Yellow patch]	[Dark Red patch]	[Dark Magenta patch]	[Dark White patch]	[Dark 3/Color patch]	[Dark Black patch]

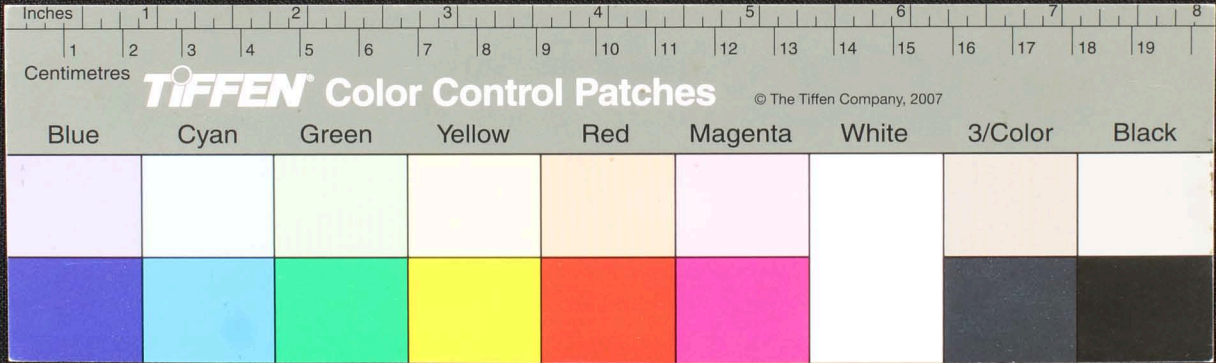
Handwritten text in Tamil script on a palm leaf manuscript. The text is arranged in several lines, starting with a small symbol on the left. The script is densely packed and appears to be a form of classical or religious Tamil. The leaf shows signs of age, including dark spots and some staining.



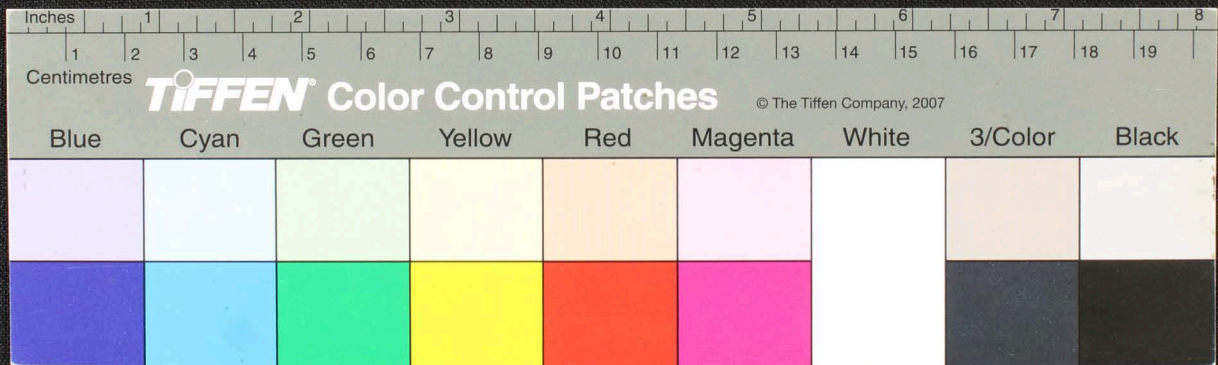
Handwritten Tamil script on a palm leaf manuscript. The text is densely packed and appears to be a historical record or a religious text. The leaf shows signs of age, including some staining and wear.



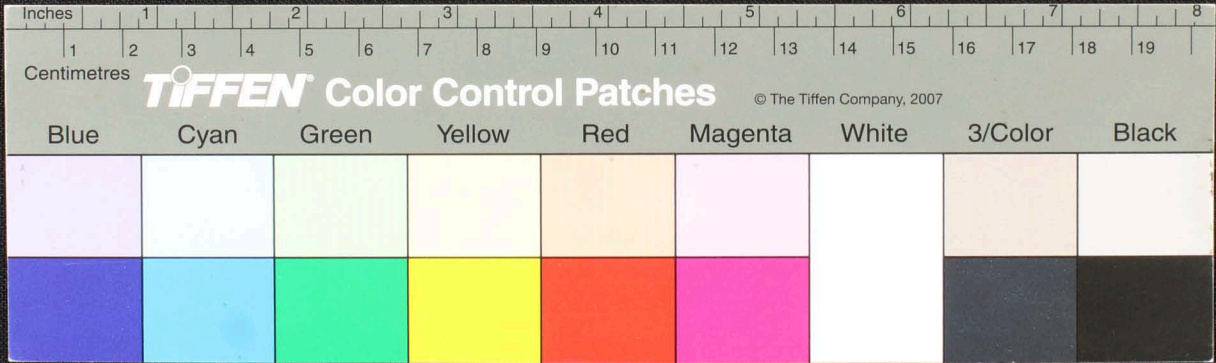
Handwritten text in Tamil script on a palm leaf manuscript. The text is densely packed and spans the length of the leaf. It appears to be a historical record or a list of items, possibly related to a temple or a royal court, given the context of such manuscripts. The script is in an older form of the Tamil language.



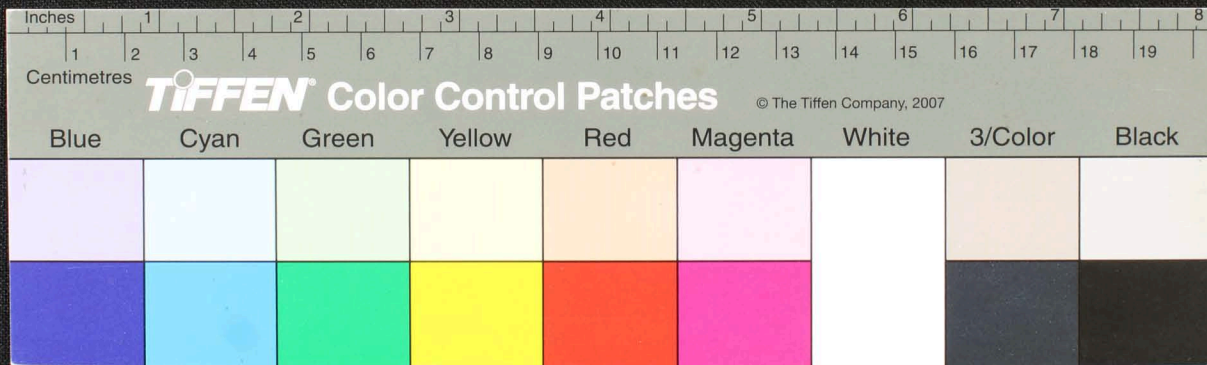
Handwritten text in Tamil script on a palm leaf manuscript. The text is arranged in approximately 10 horizontal lines across the length of the leaf. The script is finely etched into the surface of the dried leaf. The leaf shows signs of age, including dark spots, small holes, and some fraying at the edges.



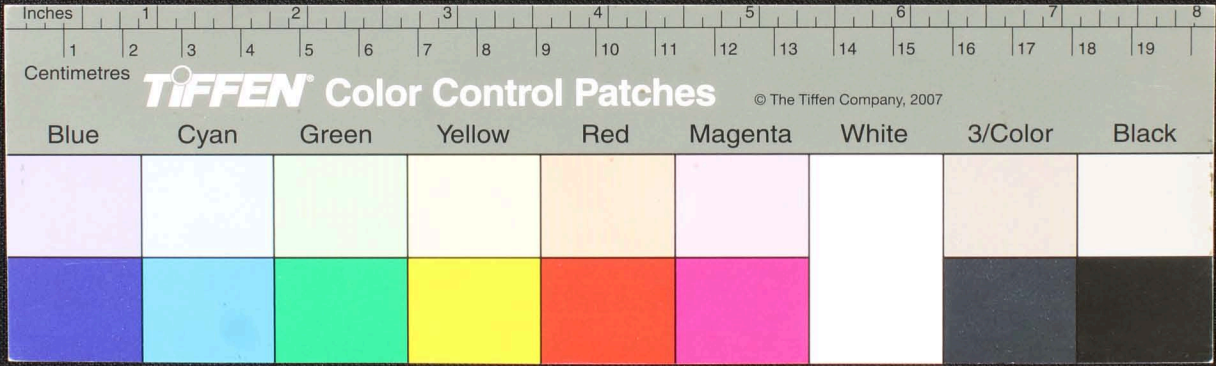
Handwritten text in Tamil script on a palm leaf manuscript. The text is arranged in approximately 10 horizontal lines across the length of the leaf. The script is dense and appears to be a form of classical or historical Tamil. There are some dark spots and irregularities on the leaf, possibly due to age or damage.



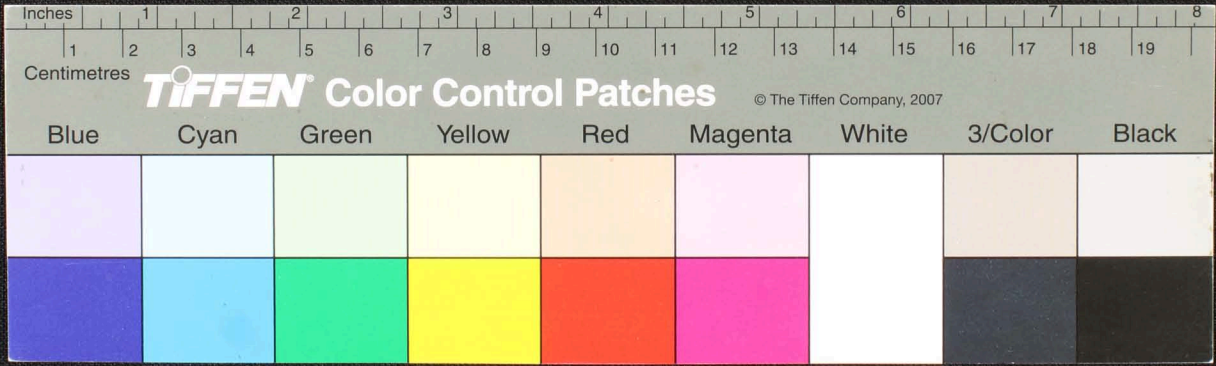
Handwritten Tamil script on a palm leaf manuscript. The text is arranged in approximately 10 horizontal lines across the length of the leaf. The script is densely packed and appears to be a form of classical or historical Tamil. There are some dark spots and irregularities on the leaf, possibly due to age or damage.



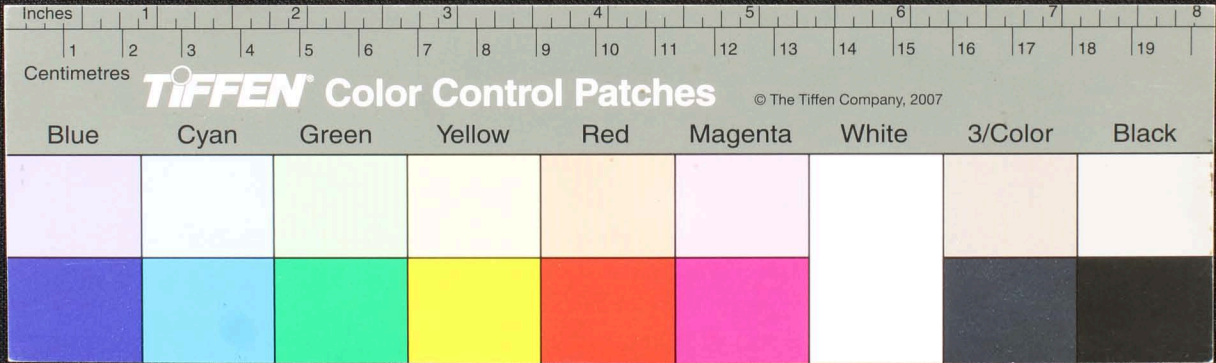
Handwritten Tamil script on a palm leaf manuscript. The text is arranged in approximately 10 horizontal lines across the length of the leaf. The script is densely packed and appears to be a form of classical or historical Tamil. There are some dark ink blotches and signs of wear on the leaf, particularly in the center and towards the right end.



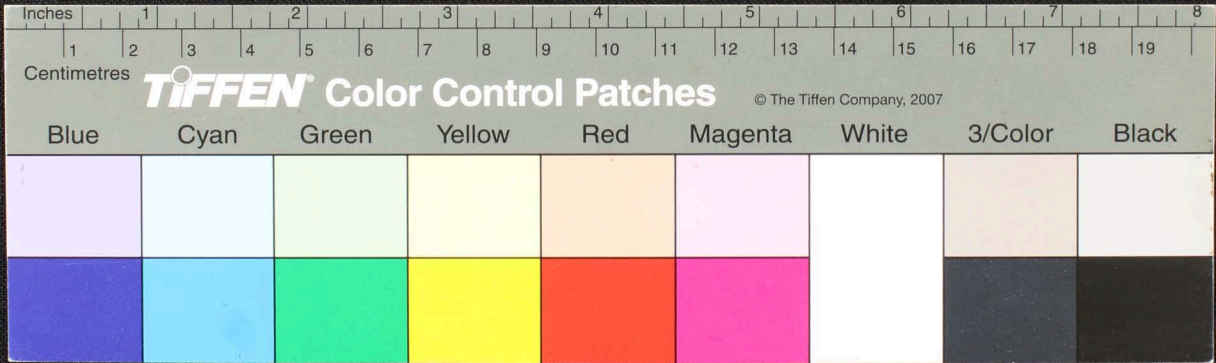
மீட்டர்...
 கி...
 19...
 ம...
 20-...
 19...
 19...
 19...



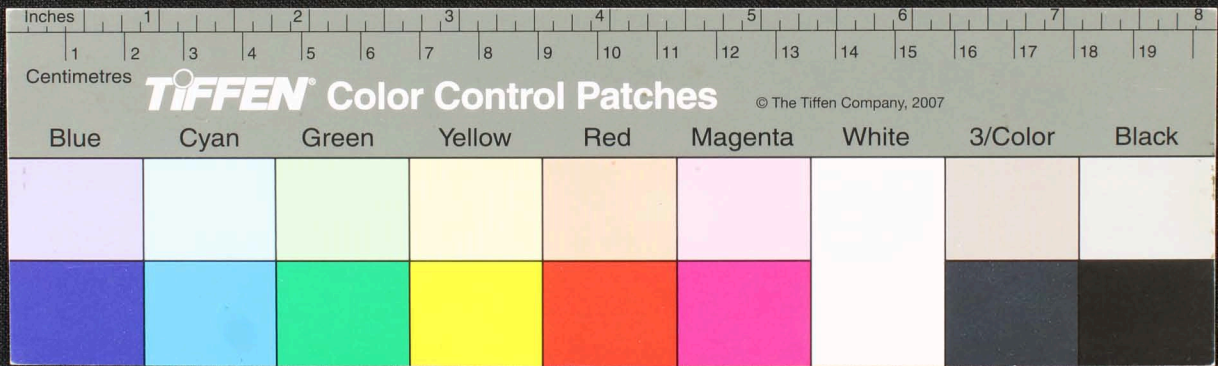
Handwritten text in Tamil script on a palm leaf manuscript. The text is densely packed and includes several lines of characters. On the left side, there are handwritten numbers '41' and '160'. The script appears to be a form of historical or religious Tamil.



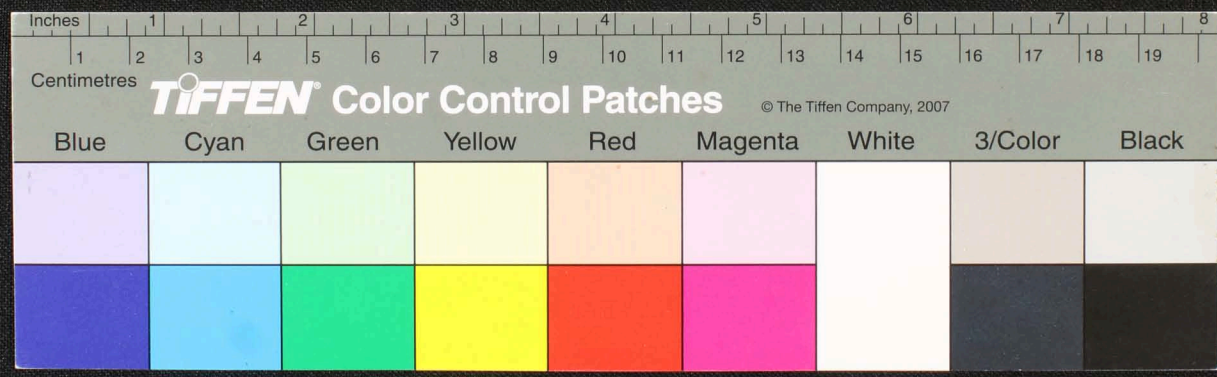
Handwritten text in Tamil script on a palm leaf manuscript. The text is arranged in approximately 10 horizontal lines across the length of the leaf. The script is dense and appears to be a form of classical or historical Tamil. There are some dark spots and irregularities on the leaf, possibly due to age or damage.



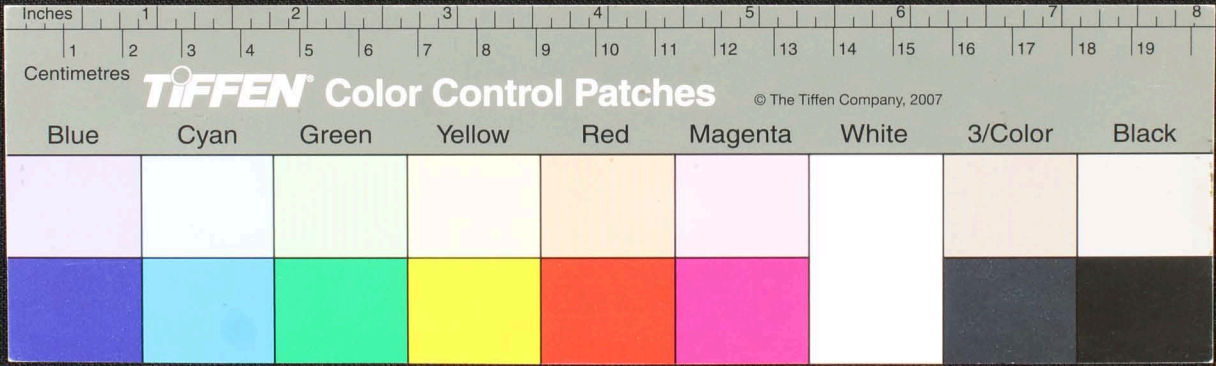
Handwritten Tamil script on a palm leaf manuscript. The text is arranged in approximately 10 horizontal lines across the length of the leaf. The script is a traditional form of the Tamil language, likely used for religious or philosophical purposes. Some characters are circled, possibly indicating specific words or symbols. The leaf shows signs of age, including some staining and wear.



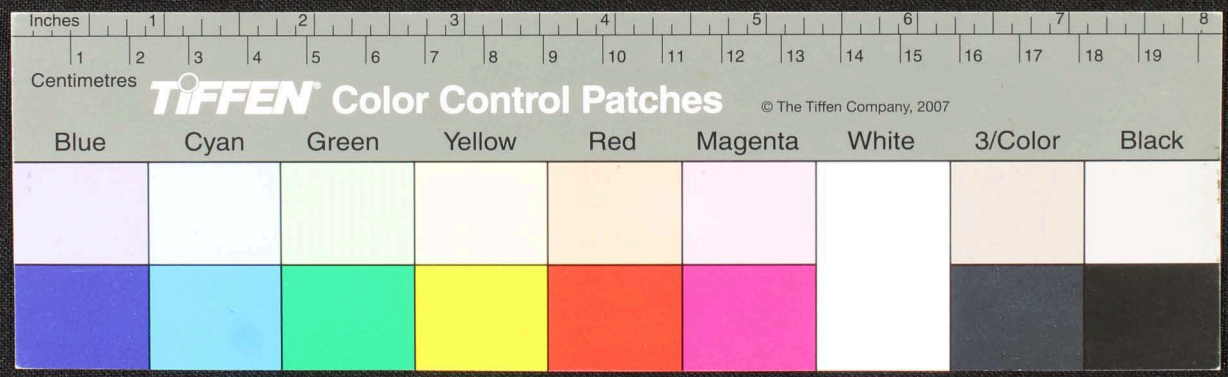
Handwritten Tamil script on a palm leaf manuscript. The text is densely packed and appears to be a historical record or a form of poetry. The leaf shows signs of age and wear, with some dark spots and a small insect-like mark on the left side.



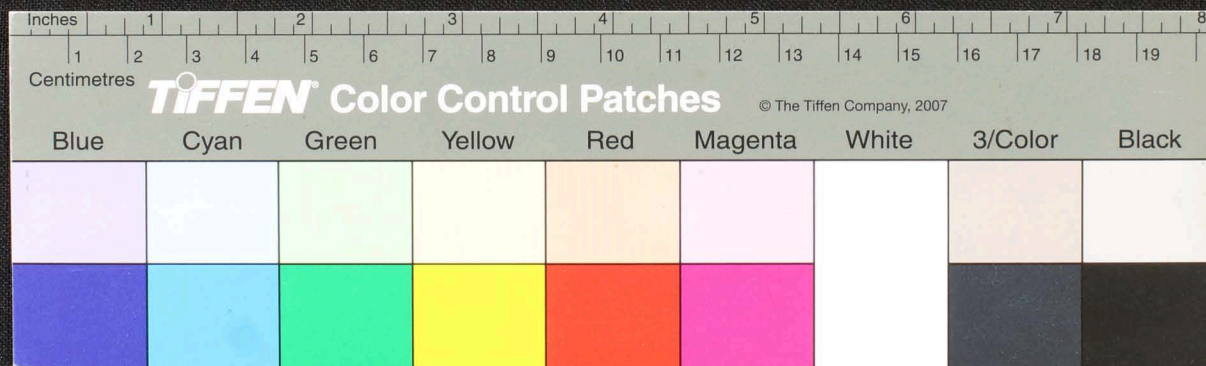
Handwritten Tamil script on a palm leaf manuscript. The text is densely packed and spans the length of the leaf. It appears to be a historical record or a religious text, given the context of such artifacts. The script is written in a traditional style, with some characters that are characteristic of older Tamil inscriptions. The leaf shows signs of age, including some staining and wear.



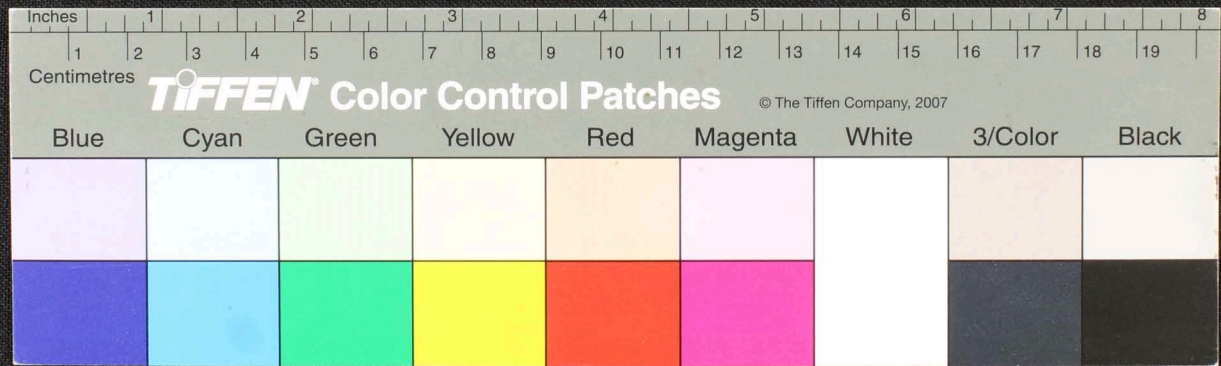
Handwritten Tamil script on a palm leaf manuscript. The text is arranged in approximately 10 horizontal lines across the length of the leaf. The script is densely packed and appears to be a form of classical or historical Tamil. There are some dark spots and signs of wear on the leaf, particularly a prominent circular mark in the lower-middle section.



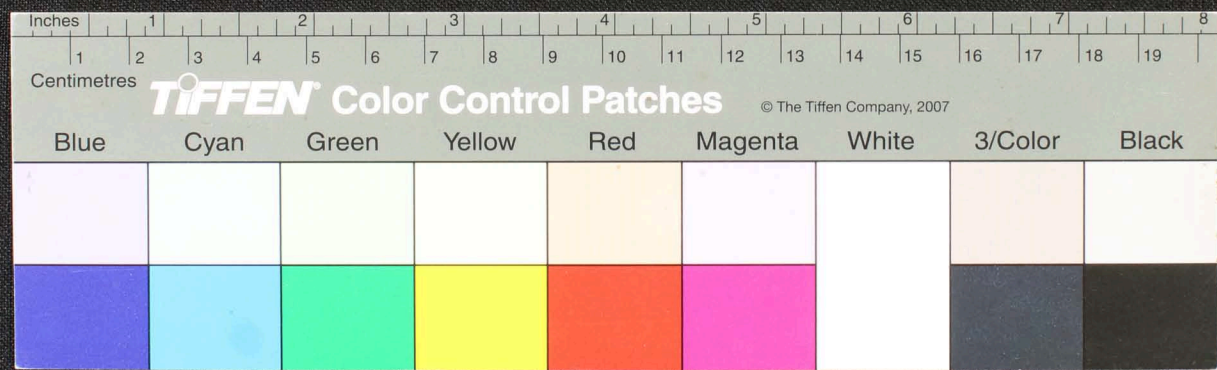
Handwritten Tamil script on a palm leaf manuscript. The text is arranged in approximately 10 horizontal lines across the length of the leaf. The script is finely etched into the surface of the dried leaf. The leaf shows signs of age, including some dark spots and irregular edges.



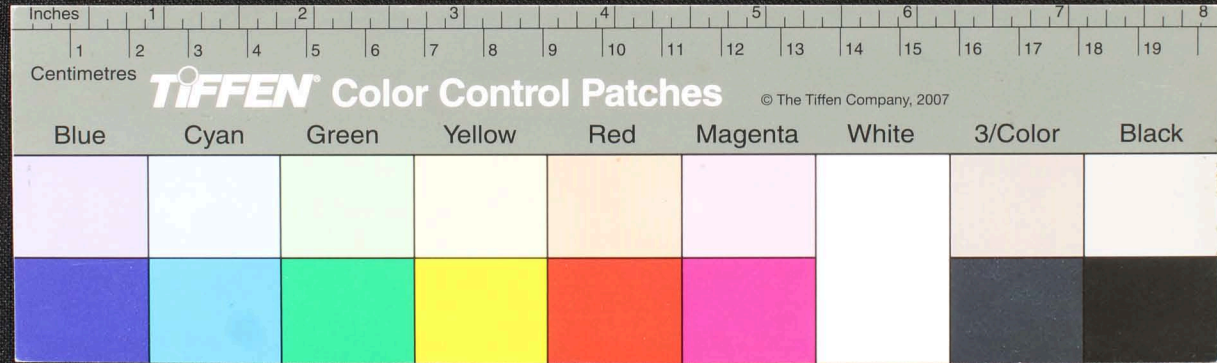
Handwritten Tamil script on a palm leaf manuscript. The text is densely packed and spans the length of the leaf. The script is in an older form of the Tamil language. The leaf shows signs of age, including some staining and wear.



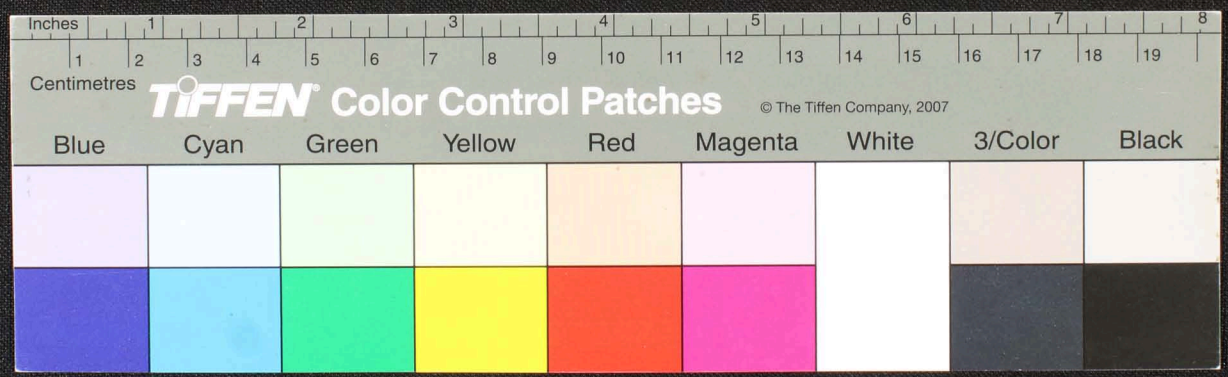
Handwritten text in Tamil script on a palm leaf manuscript. The text is densely packed and includes several lines of characters, some of which are obscured by dark ink blotches or damage. The script is written in a traditional style on a yellowish-brown leaf.



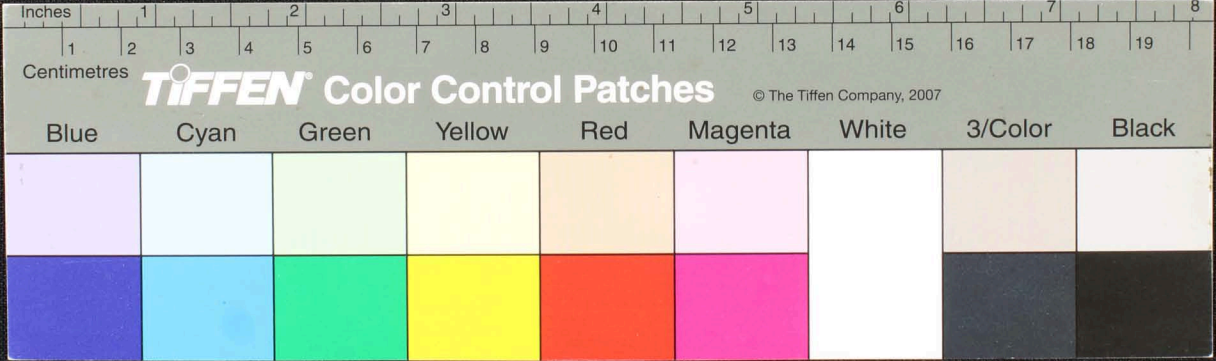
Handwritten text in Tamil script on a palm leaf manuscript. The text is densely packed and spans the length of the leaf. There are some dark spots and markings on the left side of the leaf, possibly from a binding or damage.



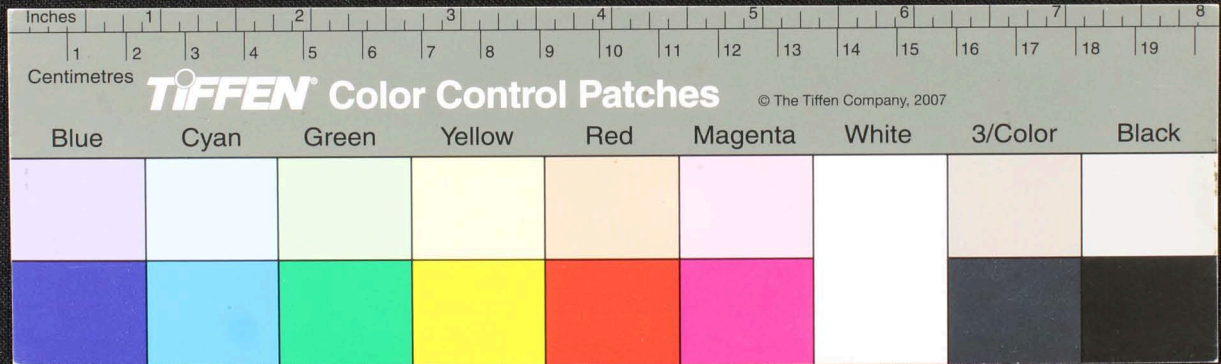
Handwritten Tamil script on a palm leaf manuscript strip. The text is densely packed and appears to be a historical record or a religious text. The script is written in a traditional style, with some characters that are characteristic of older Tamil. The leaf shows signs of age, including some staining and a small hole.



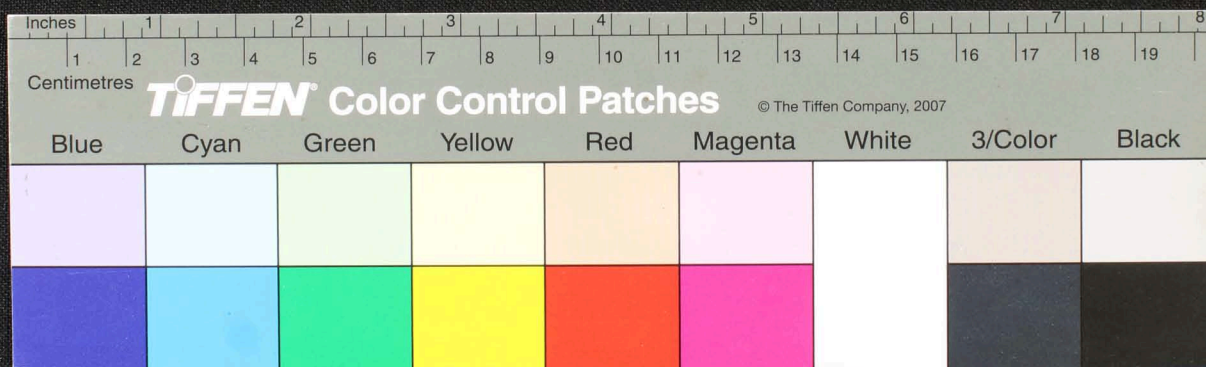
Handwritten Tamil script on a palm leaf manuscript. The text is arranged in approximately 10 horizontal lines. The script is dense and appears to be a form of classical or historical Tamil. There are some markings and what looks like a signature or initials on the left side of the leaf.



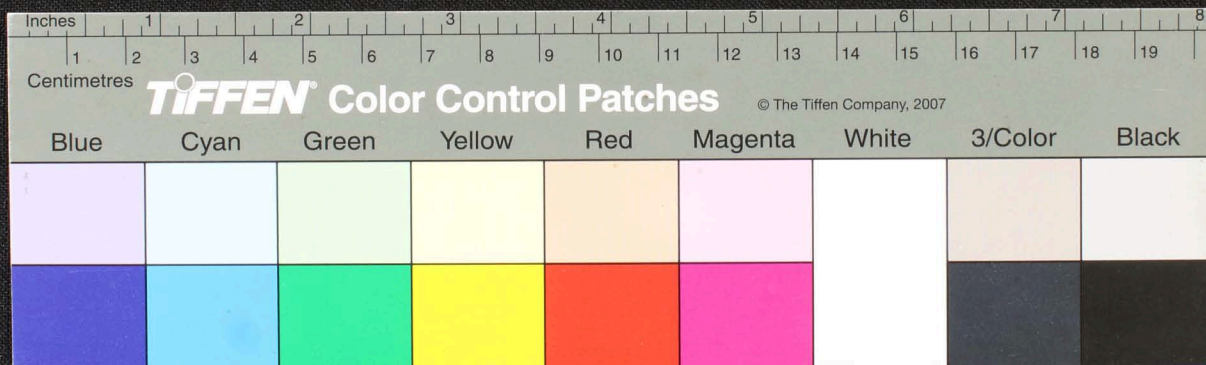
Handwritten text in Tamil script on a palm leaf manuscript. The text is arranged in approximately 10 horizontal lines across the length of the leaf. The script is dense and appears to be a form of classical or historical Tamil. There are some dark spots and stains on the leaf, particularly on the left side.



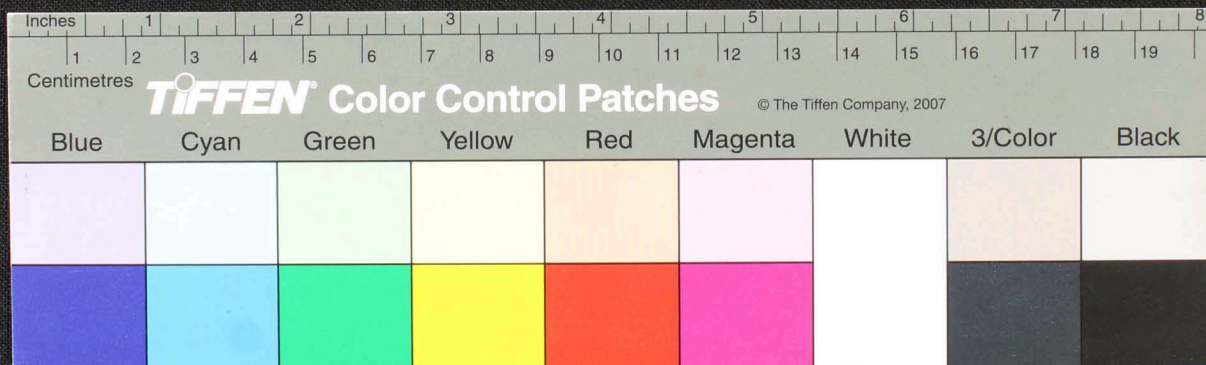
Handwritten Tamil script on a palm leaf manuscript strip. The text is densely packed and spans the length of the leaf. It appears to be a historical record or a religious text, given the context of such artifacts. The script is in an older form of the Tamil language.



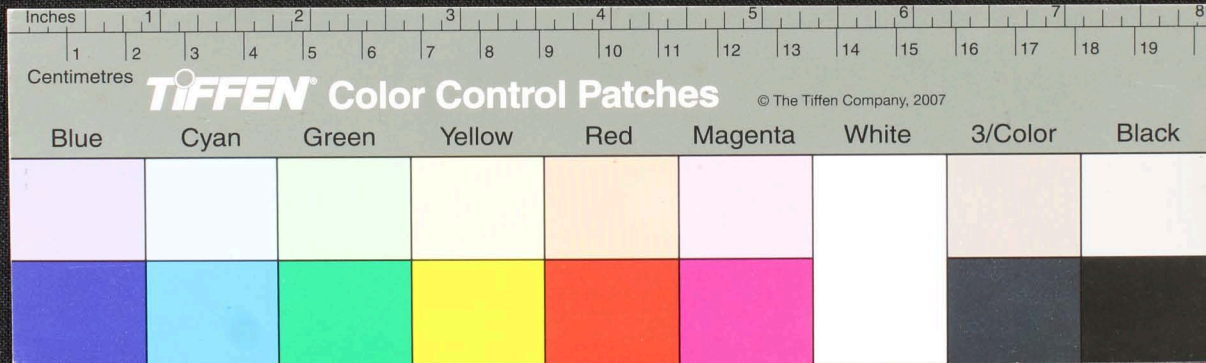
Handwritten Tamil script on a palm leaf manuscript. The text is arranged in approximately 10 horizontal lines across the length of the leaf. The script is densely packed and appears to be a form of classical or historical Tamil. There are some dark ink smudges and a small circular hole on the left side of the leaf, which are characteristic of traditional palm leaf manuscripts.



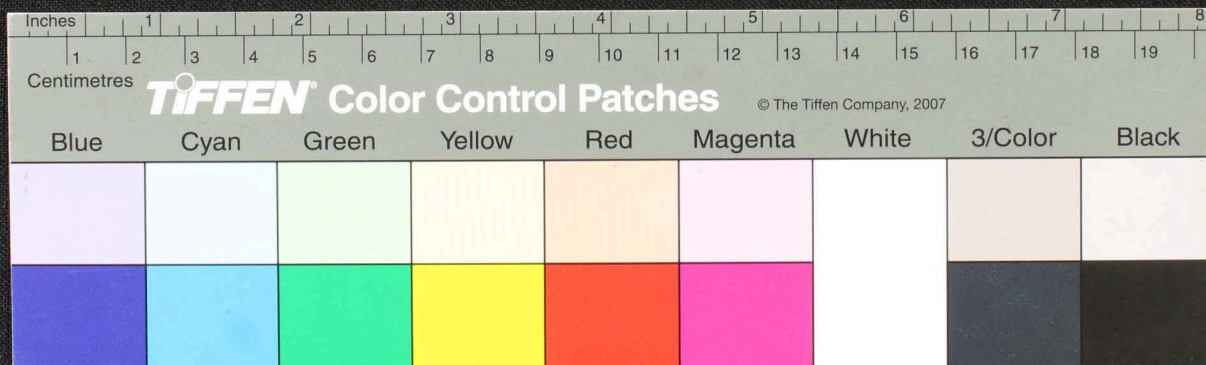
Handwritten text in Tamil script on a palm leaf manuscript. The text is arranged in approximately 10 horizontal lines across the length of the leaf. The script is finely etched into the surface of the dried leaf. The leaf shows signs of age, including dark spots and some fraying at the edges.



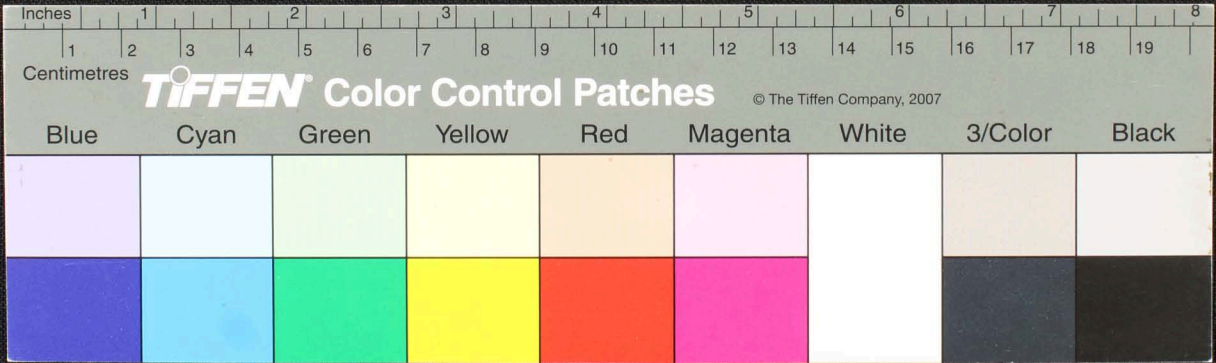
Handwritten text in Tamil script on a palm leaf manuscript. The text is arranged in approximately 10 horizontal lines across the length of the leaf. The script is densely packed and appears to be a form of classical or historical Tamil. There are some dark spots and irregularities on the leaf, possibly due to age or damage.



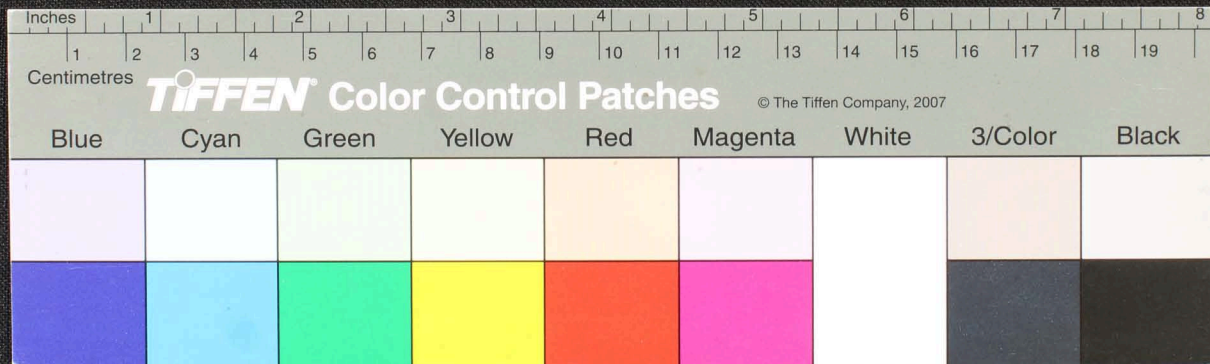
Handwritten Tamil script on a palm leaf manuscript. The text is densely packed and spans the length of the leaf. The script is in an older form of the Tamil language, with some characters appearing to be in a different script or dialect. The leaf shows signs of age, including dark spots and some damage.



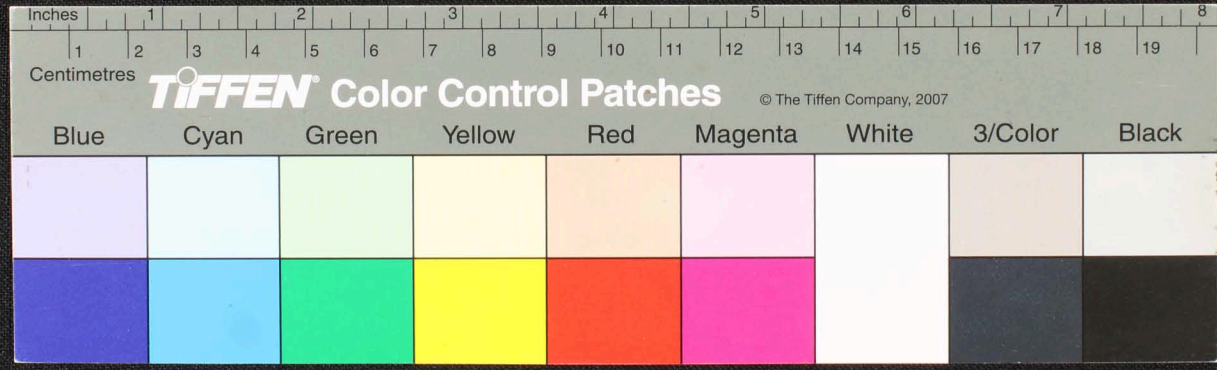
Handwritten Tamil script on a palm leaf manuscript. The text is densely packed and appears to be a historical record or a religious text, possibly related to the Tamil calendar or a specific festival. The script is written in a traditional style, with some characters that are characteristic of older Tamil orthography. The leaf shows signs of age, including some dark spots and wear.



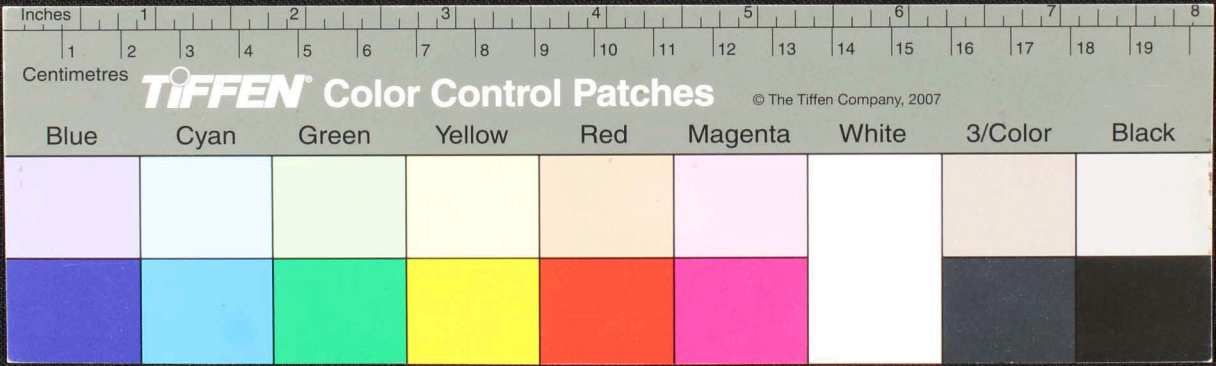
Handwritten text in Tamil script on a palm leaf manuscript. The text is arranged in several lines across the length of the leaf. The script is dense and appears to be a form of classical or historical Tamil. The leaf shows signs of age, including some staining and wear.



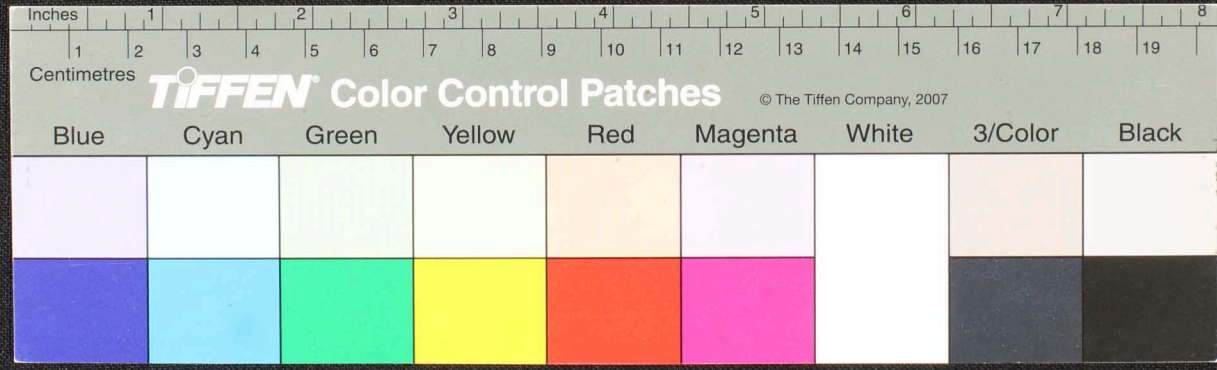
Handwritten text in Tamil script on a palm leaf manuscript. The text is arranged in approximately 10 horizontal lines across the length of the leaf. The script is dense and appears to be a form of classical or historical Tamil. There are some dark spots and irregularities on the leaf, possibly due to age or damage.



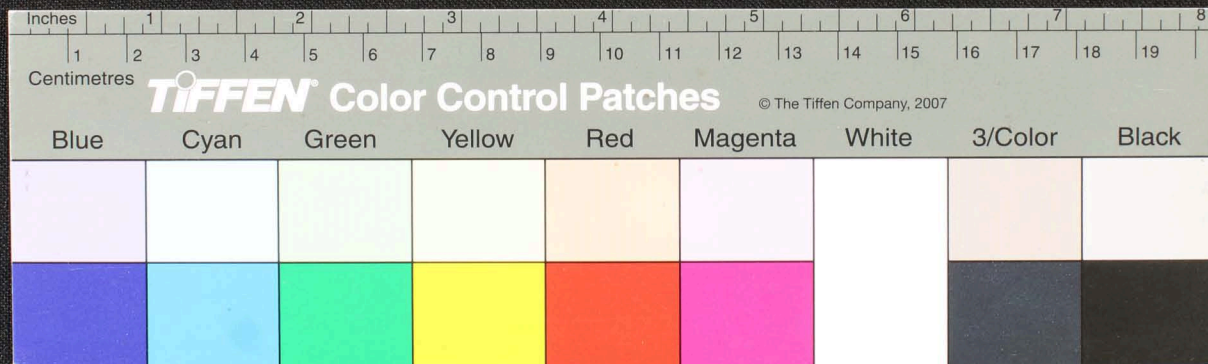
Handwritten Tamil script on a palm leaf manuscript. The text is densely packed and spans the length of the leaf. It appears to be a historical record or a religious text, given the context of such manuscripts. The script is written in a traditional style, with some characters that are characteristic of older Tamil forms. The leaf shows signs of age, with some discoloration and wear.



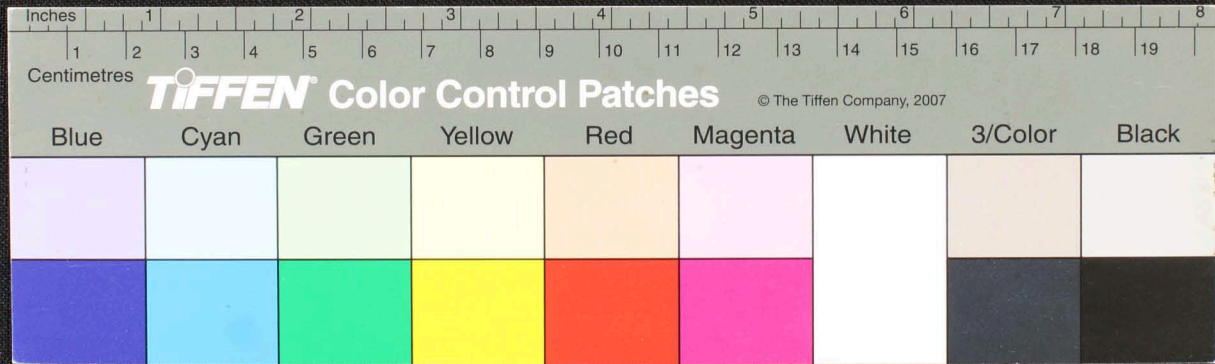
Handwritten text in Tamil script on a yellowed strip of paper. The text is arranged in approximately 10 horizontal lines. The script is dense and appears to be a form of historical or religious record. The paper shows signs of age, including some staining and a small dark hole near the center.



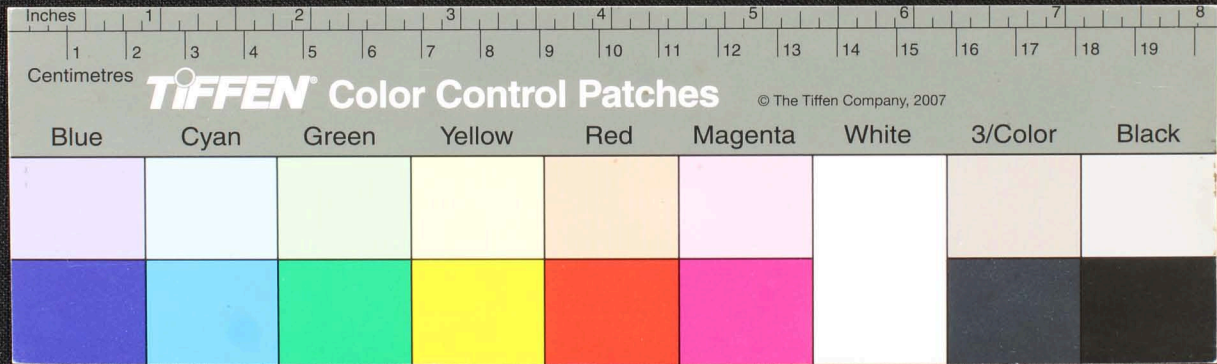
Handwritten text in Tamil script on a palm leaf manuscript. The text is arranged in approximately 10 horizontal lines. The script is dense and appears to be a form of classical or historical Tamil. There are some dark spots and irregularities on the leaf, possibly due to age or damage. The text is written in a dark ink or natural pigment on the light-colored surface of the palm leaf.



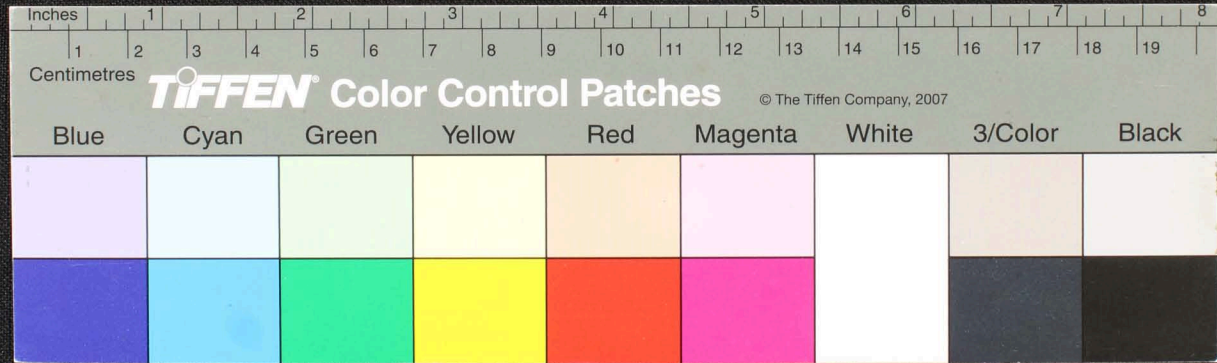
Handwritten text in Tamil script on a palm leaf manuscript. The text is arranged in approximately 10 horizontal lines. The script is dense and appears to be a form of historical or religious Tamil. There are some dark spots and irregularities on the leaf, possibly due to age or damage. The text is written in a dark ink or natural leaf color.



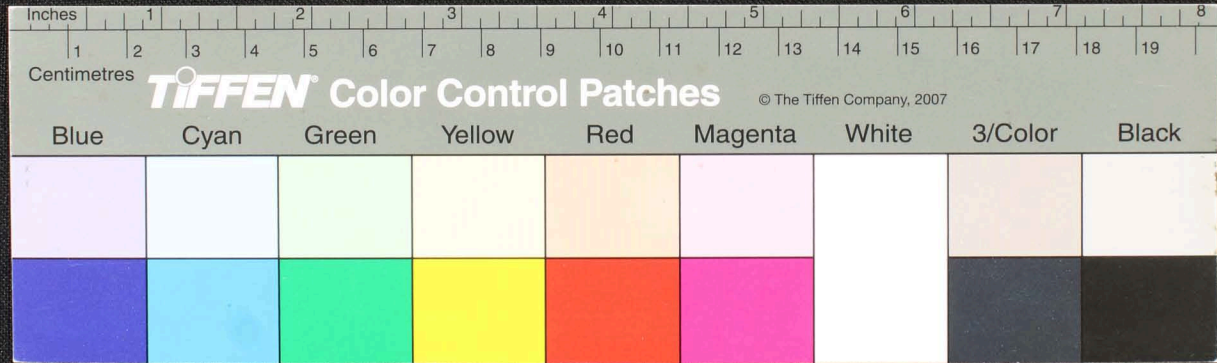
Handwritten text in Tamil script on a palm leaf manuscript. The text is arranged in approximately 10 horizontal lines across the length of the leaf. The script is dense and appears to be a form of classical or historical Tamil. There are some dark spots and irregularities on the leaf, possibly due to age or damage.



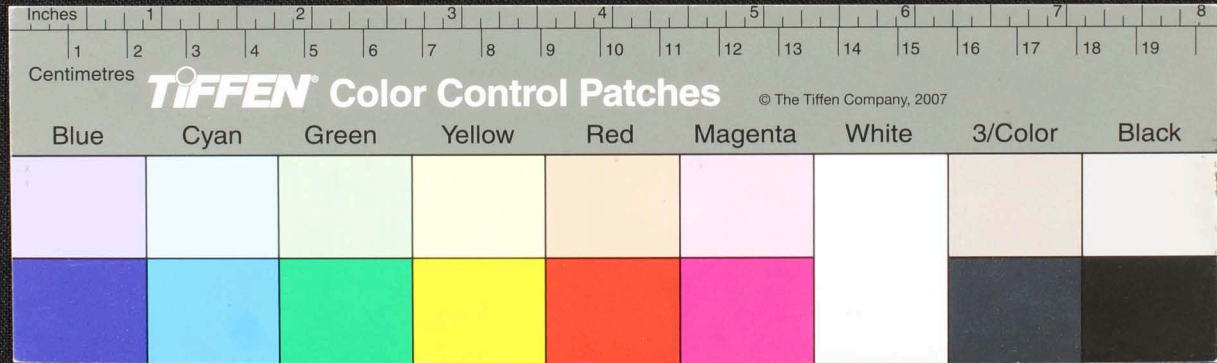
Handwritten Tamil script on a palm leaf manuscript. The text is arranged in approximately 10 horizontal lines across the length of the leaf. The script is a traditional form of the Tamil language, likely used for religious or philosophical purposes. There are some dark spots and irregularities on the leaf, possibly due to age or damage.



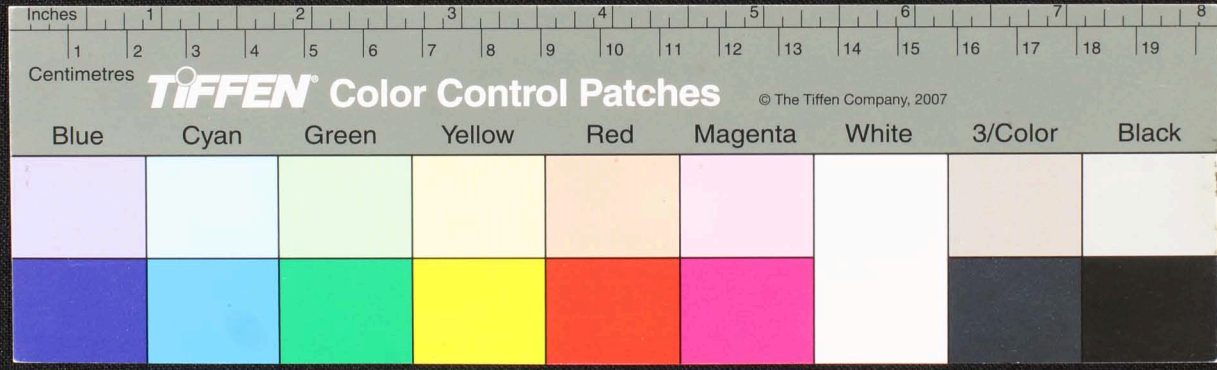
Handwritten Tamil script on a palm leaf manuscript. The text is arranged in several lines across the length of the leaf. On the left side, there are handwritten numbers '25' and '105'. The script includes various characters and symbols, some of which are circled or underlined. The leaf shows signs of age and wear, with some dark spots and a small hole near the center.



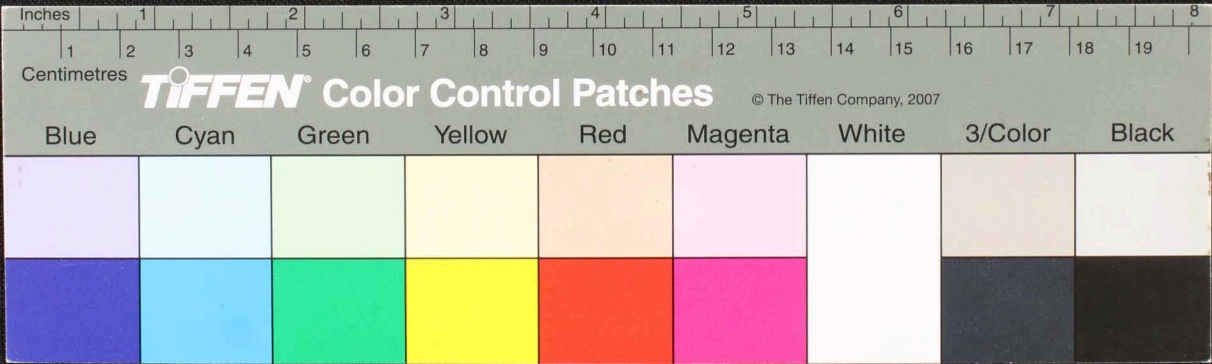
Handwritten Tamil script on a palm leaf manuscript. The text is densely packed and appears to be a historical record or a list of items, possibly related to land or administrative matters. The script is written in a traditional style, with some characters being more stylized than modern Tamil. There are some dark spots and a small hole on the leaf, which are likely due to age and environmental factors.



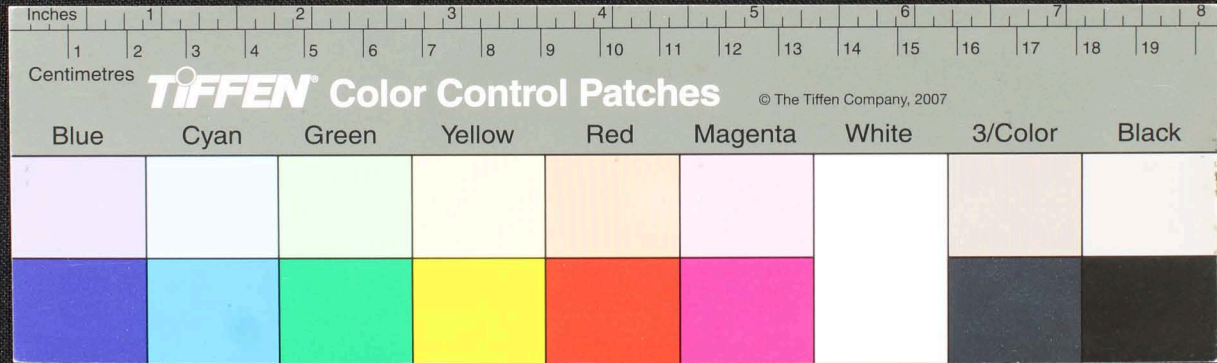
Handwritten Tamil script on a palm leaf manuscript. The text is densely packed and appears to be a historical record or a religious text. A large, stylized initial character is visible on the left side of the leaf.



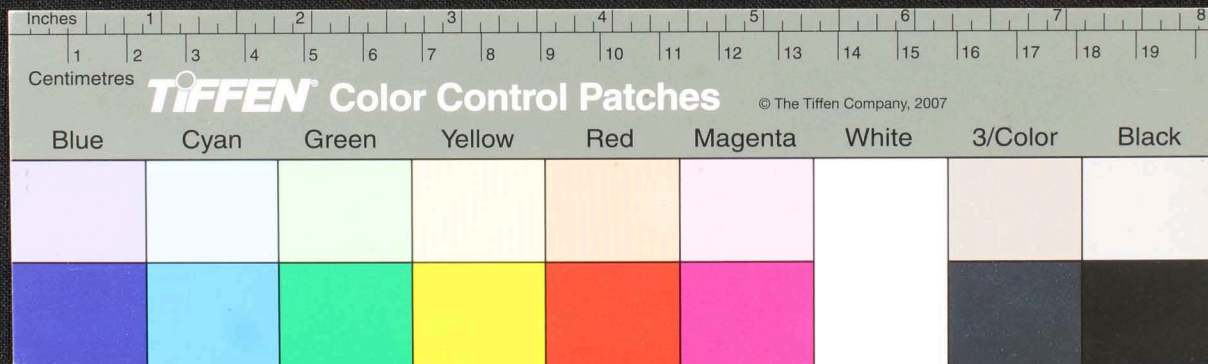
Handwritten Tamil script on a palm leaf manuscript. The text is arranged in approximately 10 horizontal lines. The script is densely packed and appears to be a form of classical or historical Tamil. There are some dark spots and irregularities on the leaf, possibly due to age or damage. The leaf is oriented horizontally and shows signs of being part of a larger book or collection.



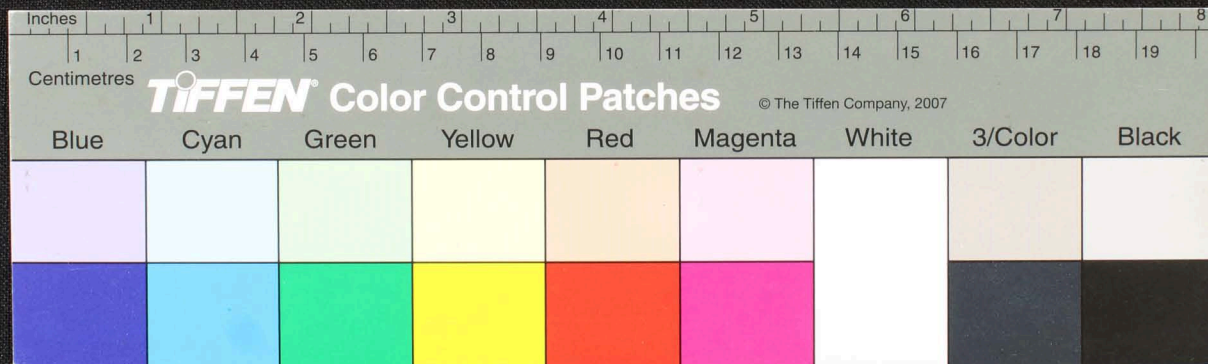
Handwritten Tamil script on a palm leaf manuscript. The text is arranged in approximately 10 horizontal lines across the length of the leaf. The script is densely packed and appears to be a form of classical or historical Tamil. There are some dark spots and irregularities on the leaf, possibly due to age or environmental factors.



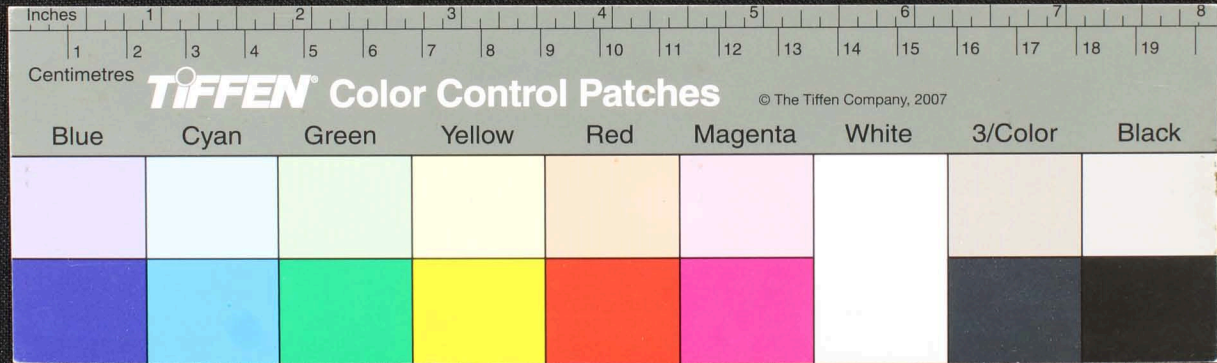
Handwritten Tamil script on a palm leaf manuscript. The text is densely packed and appears to be a historical record or a religious text. The script is written in a traditional style, with some characters being more stylized than others. The leaf shows signs of age, with some discoloration and wear.



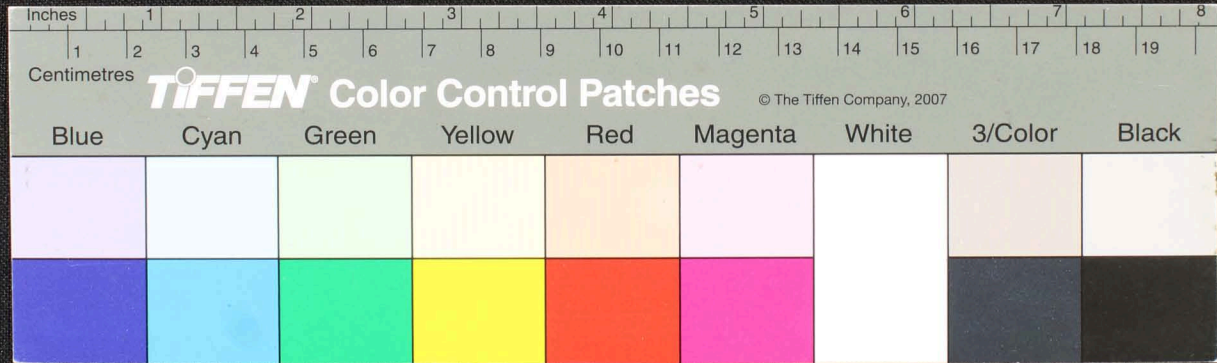
Handwritten text in Tamil script on a palm leaf manuscript. The text is densely packed and spans the length of the leaf. Some characters are clearly legible, such as 'செய்யுள்' (poem) and 'புறநானூறு' (Purananuru), but much of the text is obscured by ink smudges and bleed-through from the reverse side. The leaf shows signs of age and wear, with some dark spots and a small hole near the center.



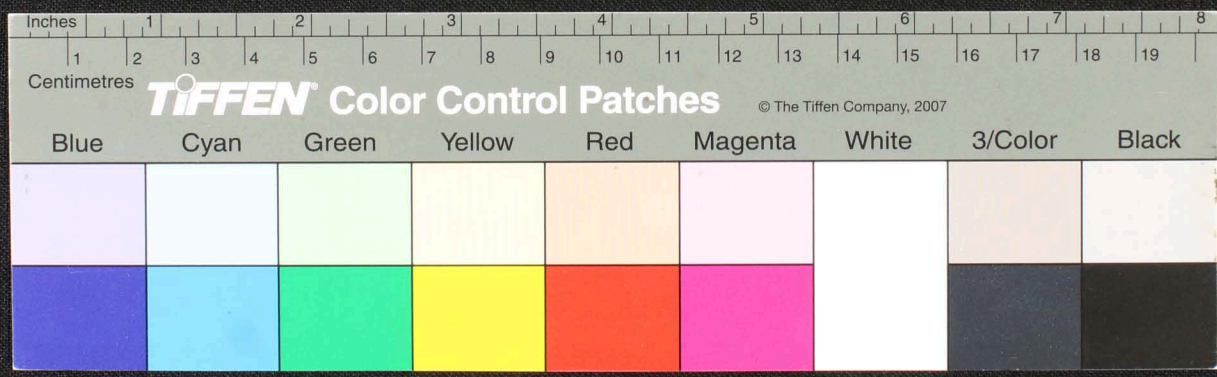
Handwritten Tamil script on a palm leaf manuscript. The text is densely packed and appears to be a historical record or a religious text. The leaf is yellowed with age and shows signs of wear, including a large hole near the center. The script is written in a traditional style, with some characters being more stylized than others. The text is arranged in several lines across the length of the leaf.



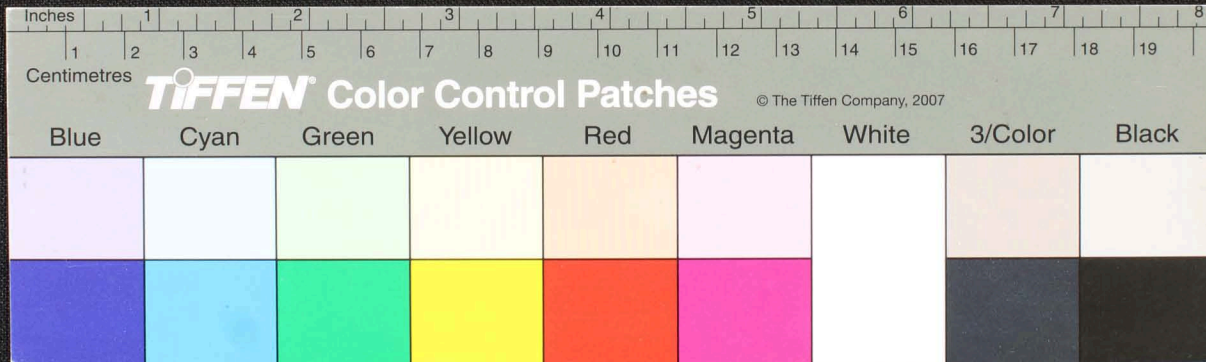
Handwritten text in Tamil script on a palm leaf manuscript. The text is arranged in approximately 10 horizontal lines across the length of the leaf. The script is dense and appears to be a form of historical or religious text. There are some dark spots and stains on the leaf, particularly a large one near the center.



Handwritten text in Tamil script on a palm leaf manuscript. The text is arranged in approximately four horizontal lines across the length of the leaf. The script is dense and appears to be a form of historical or religious Tamil. There are some dark spots and irregularities on the leaf, possibly due to age or damage.



Handwritten text in Tamil script on a palm leaf manuscript. The text is arranged in approximately 10 horizontal lines across the length of the leaf. The script is dense and appears to be a form of classical or historical Tamil. There are some dark spots and irregularities on the leaf, possibly due to age or damage.



Handwritten Tamil script on a palm leaf manuscript. The text is arranged in approximately 10 horizontal lines. The script is densely packed and appears to be a form of classical or historical Tamil. There are some dark spots and irregularities on the leaf, possibly due to age or damage. On the left side, there is a small handwritten number '5164'.

