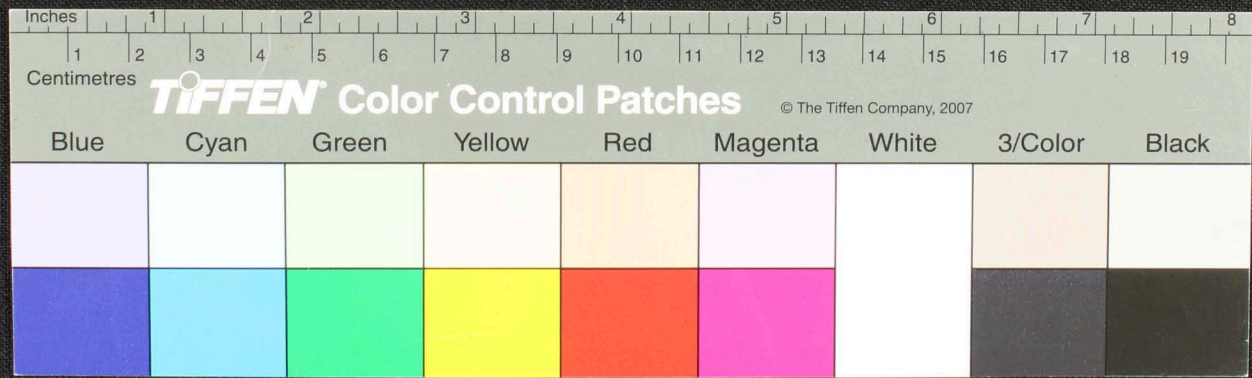
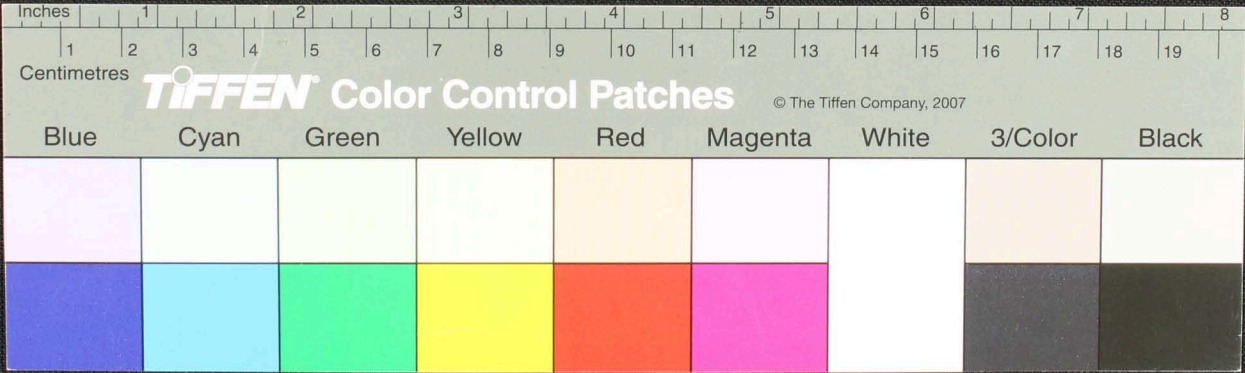


Handwritten notes in Tamil script on the left margin of the palm leaf manuscript.

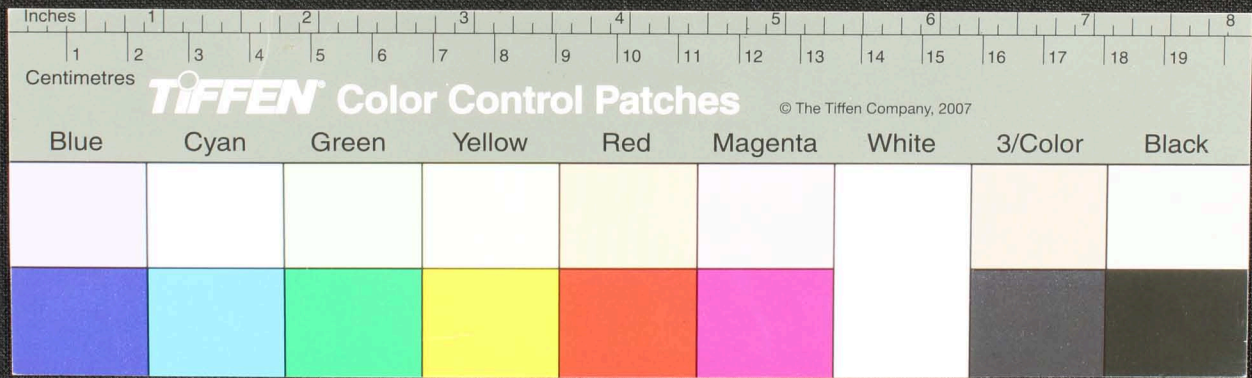
Main body of handwritten Tamil script on a palm leaf manuscript, containing approximately 10 lines of text.



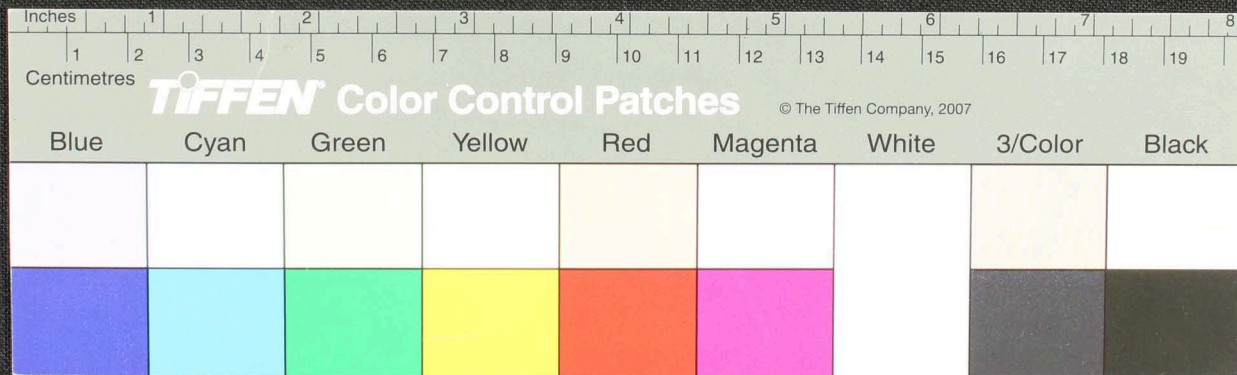
Handwritten Tamil script on a palm leaf manuscript. The text is arranged in approximately 10 horizontal lines. On the left side, there is a vertical inscription that reads "சுருதி" (Srutu) and "புத்திர" (Putra). The main body of text contains various characters, including some that are circled, possibly indicating specific words or syllables. There are two circular holes visible on the leaf, which were traditionally used for threading a cord to bind multiple leaves together.



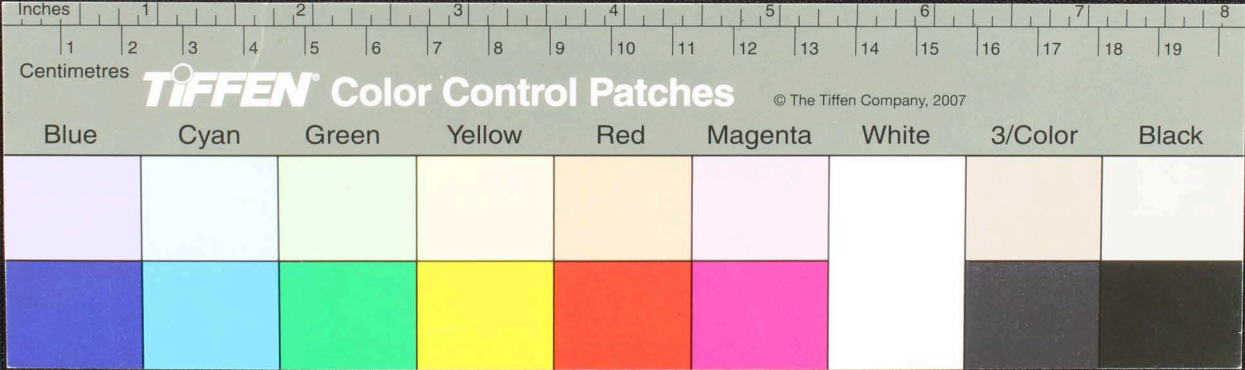
Handwritten text in an ancient script, likely Tamil, inscribed on a palm leaf. The text is arranged in approximately 12 horizontal lines. On the left side, there is a small, distinct symbol or character. The leaf shows signs of age, including several circular holes and some staining.



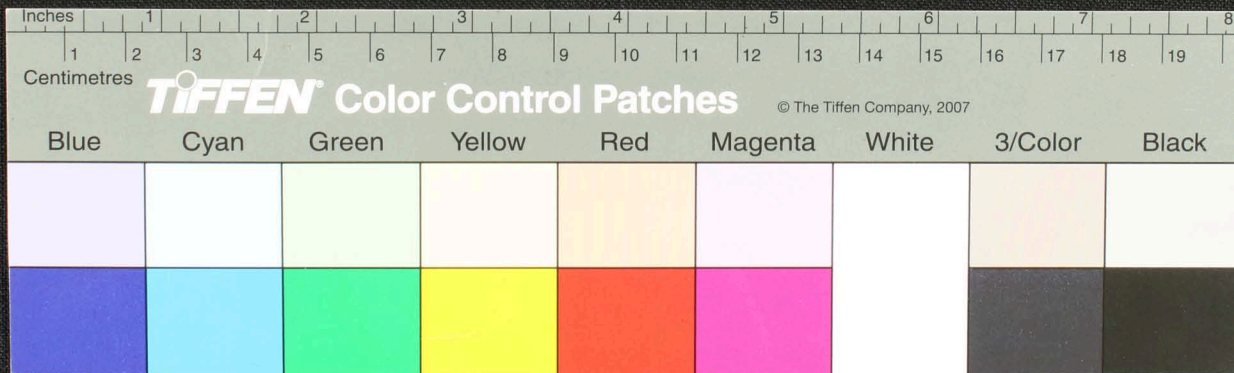
Handwritten text in Tamil script on a palm leaf manuscript. The text is arranged in approximately 10 horizontal lines across the length of the leaf. Two circular holes are visible, which were traditionally used for threading a cord to bind multiple leaves together into a book format.



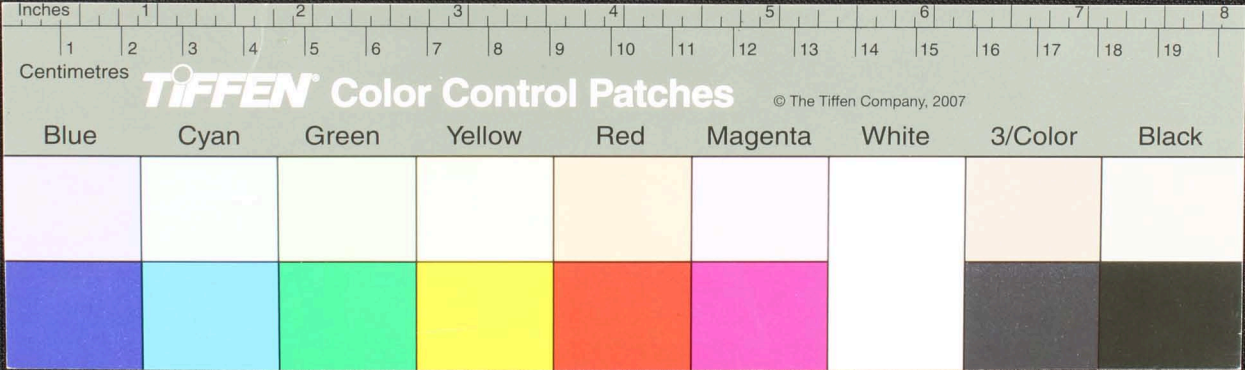
Handwritten text in Tamil script on a palm leaf manuscript. The text is arranged in approximately 10 horizontal lines across the length of the leaf. There are two circular holes visible, which were traditionally used for threading a cord to bind multiple leaves together into a book format.



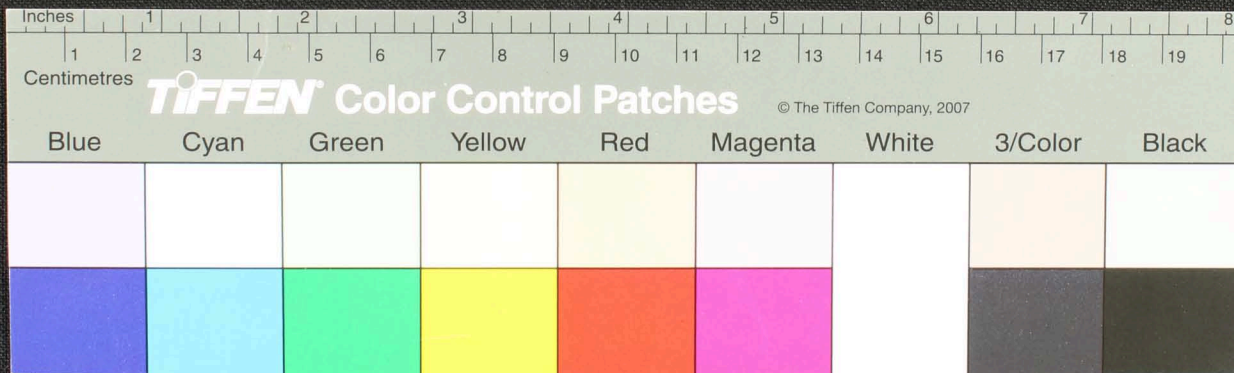
Handwritten text in Tamil script on a palm leaf manuscript. The text is arranged in approximately 12 horizontal lines. Two circular holes are visible, which were traditionally used for threading a cord to bind multiple leaves together. On the right side of the leaf, there is a small, circular diagram or seal containing some text and a central figure, possibly a deity or a specific symbol.



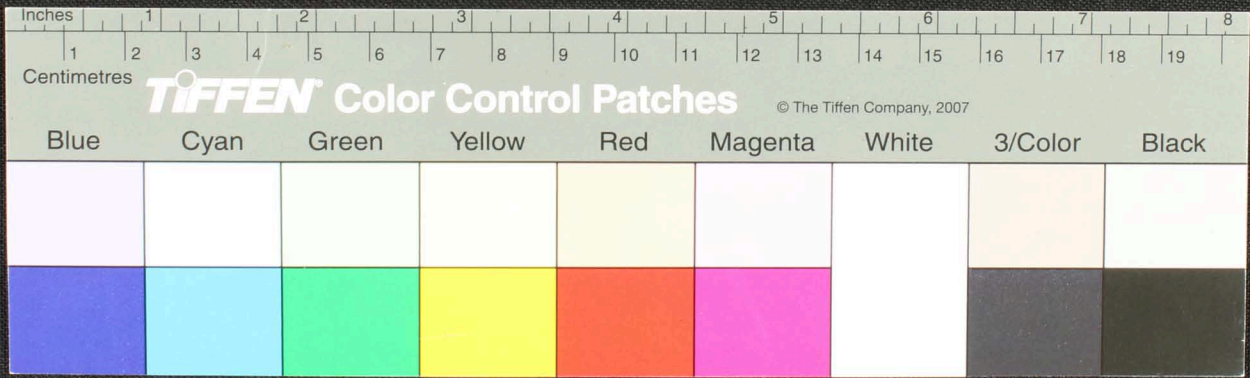
Handwritten Tamil script on a palm leaf manuscript. The text is arranged in approximately 10 horizontal lines across the length of the leaf. The script is a traditional form of the Tamil language. On the left side of the leaf, there are several small characters and symbols, possibly indicating a chapter or section marker. Two circular holes are visible on the leaf, which were traditionally used for threading a cord to bind multiple leaves together into a book.



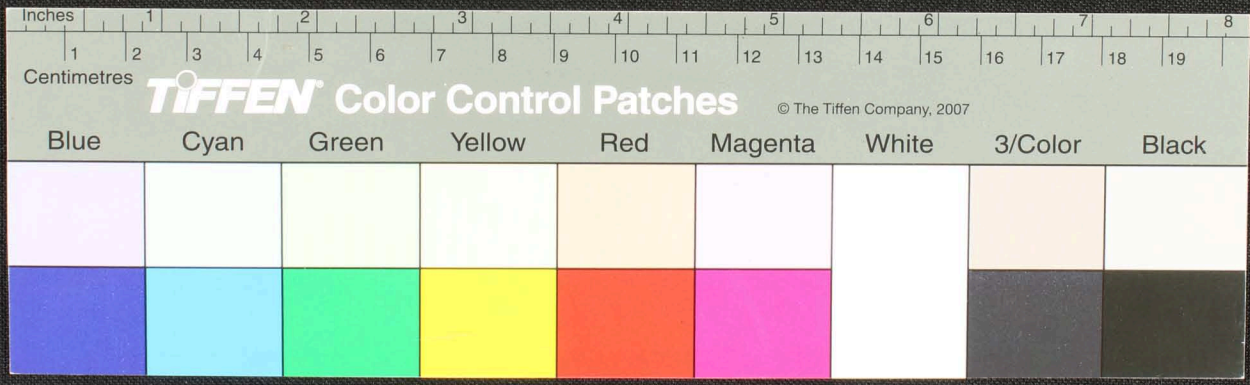
Handwritten text in Tamil script on a palm leaf manuscript. The text is arranged in horizontal lines across the length of the leaf. On the left side, there is a circular diagram with the Tamil characters 'ஸ்' and 'ஸ்' written inside. Two circular holes are visible on the leaf, which were traditionally used for threading a cord to bind multiple leaves together.



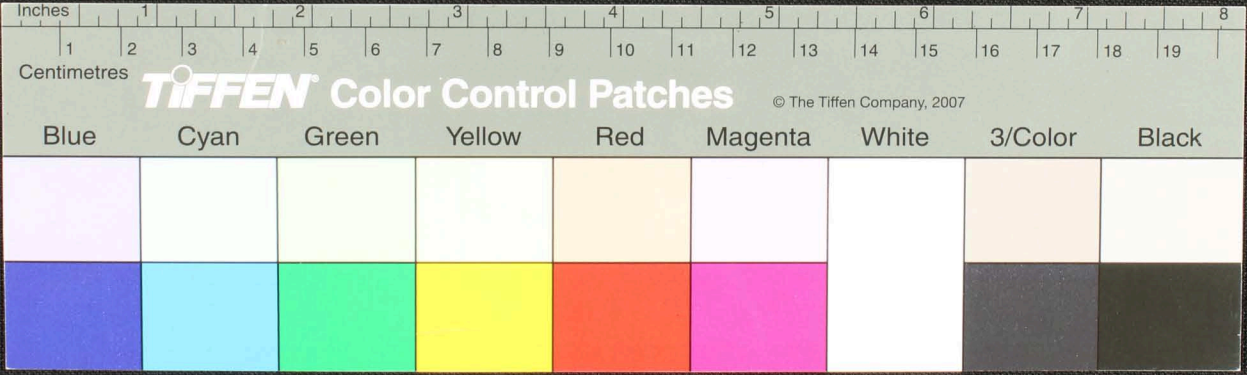
Handwritten Tamil script on a palm leaf manuscript. The text is arranged in approximately 10 horizontal lines across the length of the leaf. Two circular holes are visible, used for threading a cord to bind multiple leaves together. The script is a traditional form of the Tamil language.



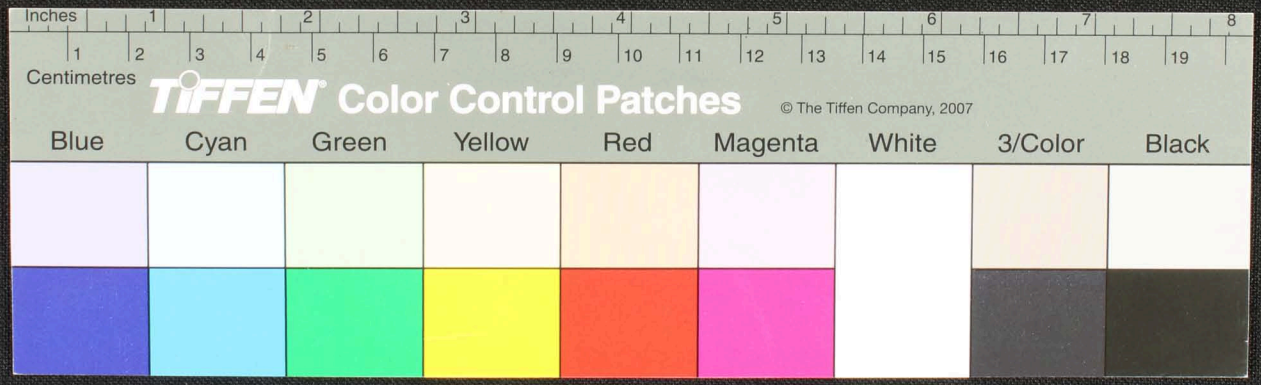
Handwritten Tamil script on a palm leaf manuscript. The text is arranged in approximately 12 horizontal lines across the length of the leaf. Two circular holes are visible, used for threading a cord to bind multiple leaves together. The script is finely etched into the surface of the dried leaf.



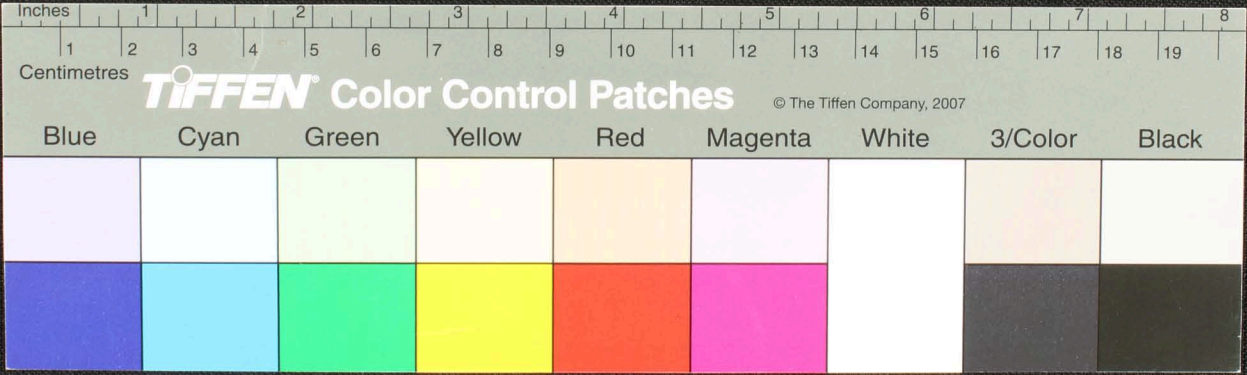
Handwritten Tamil script on a palm leaf manuscript. The text is arranged in approximately 10 horizontal lines. On the far left, the word 'வந்' (van) is written vertically. The script is densely packed and covers most of the length of the leaf. There are two circular holes visible, which were traditionally used for threading a cord to bind multiple leaves together.



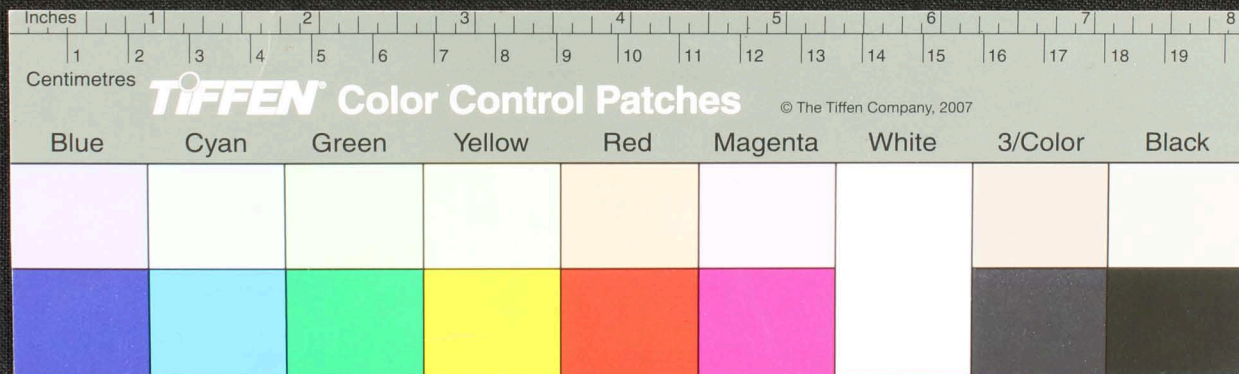
Handwritten Tamil script on a palm leaf manuscript. The text is arranged in approximately 10 horizontal lines. On the left side, there are several small, simple drawings, including what appears to be a sun or star symbol and a circular emblem. On the right side, there is a small grid or table with handwritten entries, possibly a calendar or a record of events. The script is densely packed and covers most of the length of the leaf.



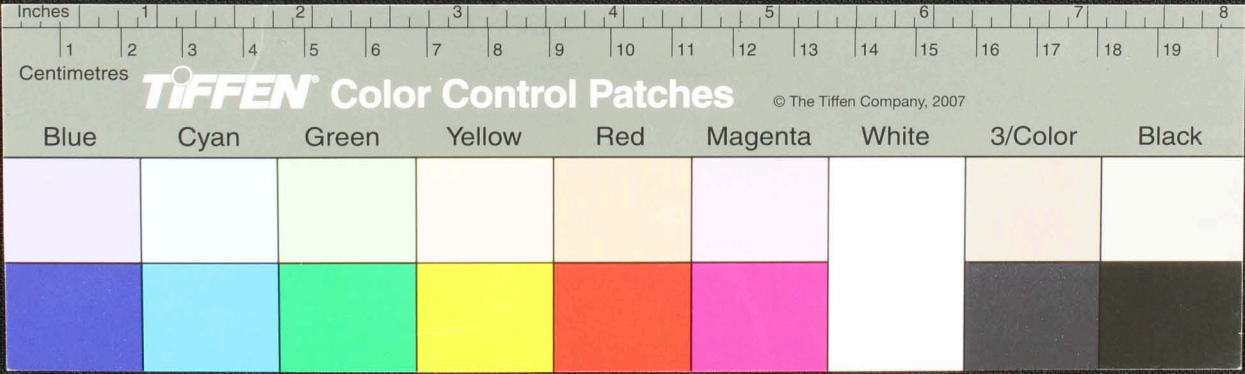
பூதநாயகியுடையது. — மதுரை — ஒரு இயி உயி சினை நக அகதி சினை கினை அரம வாய கமசு
 மம மல உதவ அல வகு மதுர வகா சிம மக வநது அம் மல வகு ருடா — பெரர — ① குங்
 மலகார — ② ஸுரந சிடு — இவதகம கலகாரநது கடு வலவு அ — ③ பன பெடுமெடு (தி) அதிலை
 மம மல உதவ உயுண்டை — ④ உதி யுடு உதவது ம — ⑤ மனநரந — சமகவ நது மதிணைதுயகலகர
 வலவு மசாமலவரநுதவர — ⑥ கினை — ⑦ கன மரநது — ⑧ மலபு கமகதவ மபெர
 — ⑨ கடுமலகை கவி சி மரநதுவவவ பெடுமெடு இலடுகடுவ நநப நது ரமசெரவல ஒருவெடுவெடுவ
ஸுரர — ⑩ ம



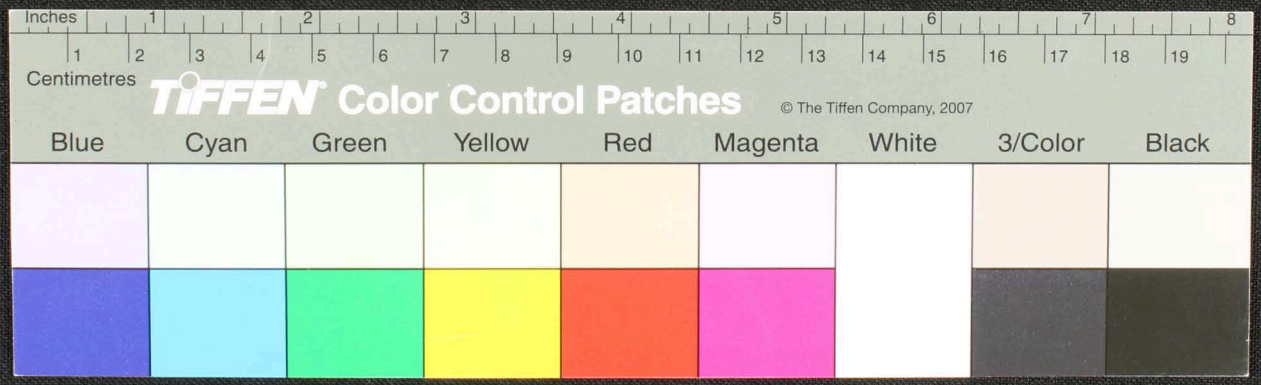
Handwritten Tamil script on a palm leaf manuscript. The text is arranged in approximately 10 horizontal lines across the length of the leaf. On the left side, there are several small, simple line drawings, including what appears to be a house or a structure with a thatched roof, and some other geometric or architectural forms. The script is written in a traditional style, with some characters being larger and more prominent than others. There are two circular holes punched through the leaf, one near the left end and one near the right end, which were traditionally used for threading a cord to bind multiple leaves together into a book.



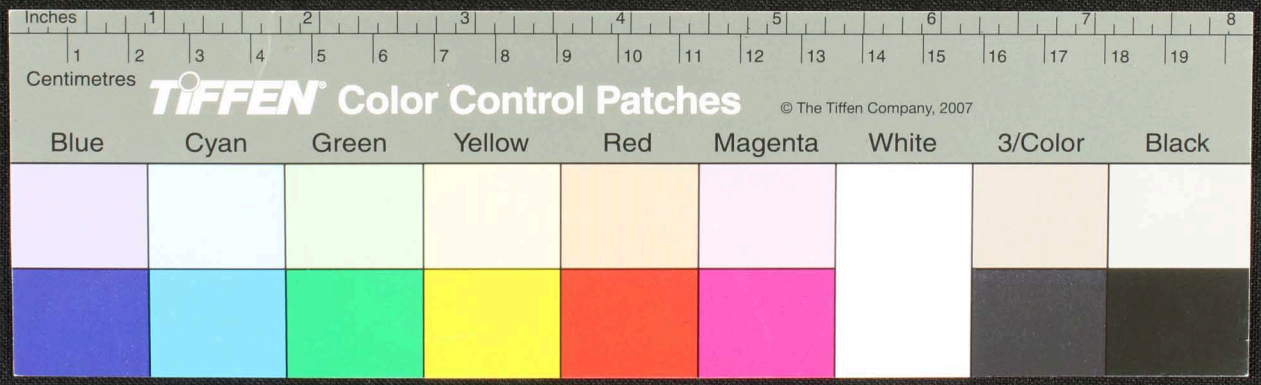
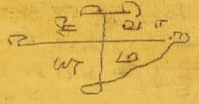
ஓபகரளி கரவுகதி நி தரநமேகவன னி தி — மெதரயி இ கவரய தி தி வ அரவு வகயடு, க மக ரமெடுவக தக ரகத
 வெநரவுடு வகதிடு க வெநர — ர வெகடு க வ ம இ ய ப த கை இ ய ர ம வெநர — ர அடி — ய டி க இ ம யி து ம ர ன
 — தி னு ம ப வ து ம த க தை — ய ச வெநர க வ ப வெநர வ ர க இ க த ர த — ச தி நி து தி ன னு ன ன ன க டி வ ர
 வெநர வ ன ன — ர ம ய இ ர து — ப ம ர ன னு ச ர ம ம ர ர த ம — ர ம வ த ர த த — தி வ ந னு னி ச கி ய வ ர ம க ன னு த
 வெநர வ ன னு ம ய ம வெநர, வ ர ன னு ட ர ம க வெநர க து வ ர ம க தி கை ச க த து இ வ வ த தி வெநர — ர வெநர க து ம
 இ ர ம ப த கை இ ய ர ம வெநர — ர ய டி க இ ம னி னு ம ர னி — தி னு ம ப வ வ ம னு ம வ வ ம வெநர க தி ந க — ர



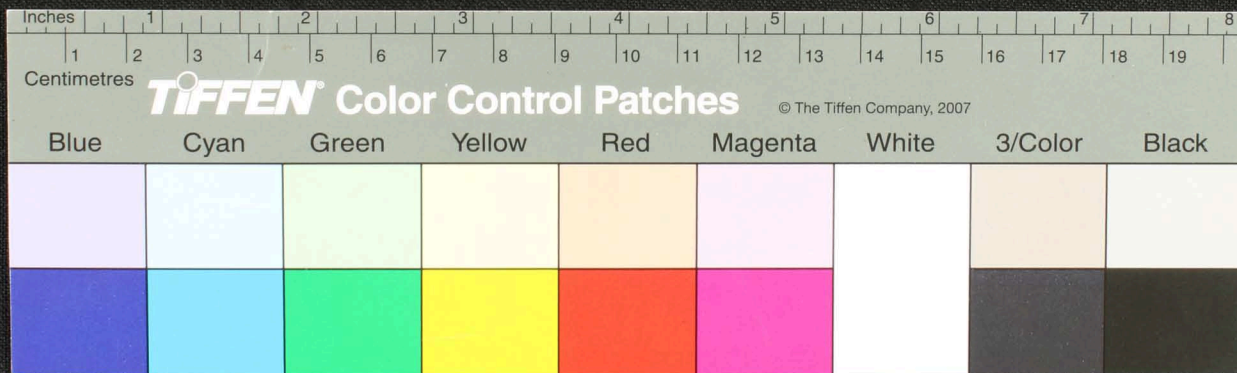
Handwritten Tamil script on a palm leaf manuscript. The text is arranged in approximately 10 horizontal lines. On the far left, there is a small vertical inscription that reads 'வர' (Vara). The script is densely packed and appears to be a form of classical or historical Tamil. There are two distinct circular holes or indentations on the leaf, one located roughly at the 4-inch mark and another at the 16-inch mark on the ruler below.



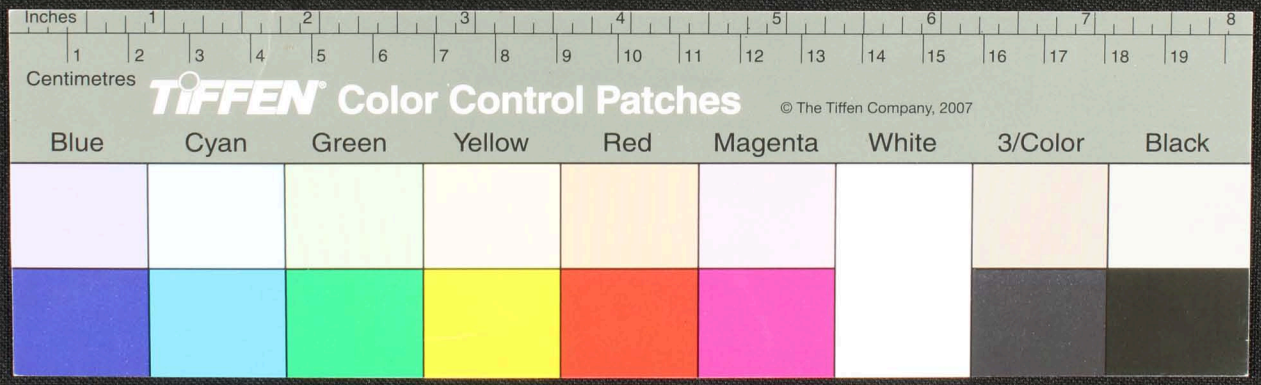
Handwritten text in Tamil script on a palm leaf manuscript. The text is arranged in three lines across the length of the leaf.



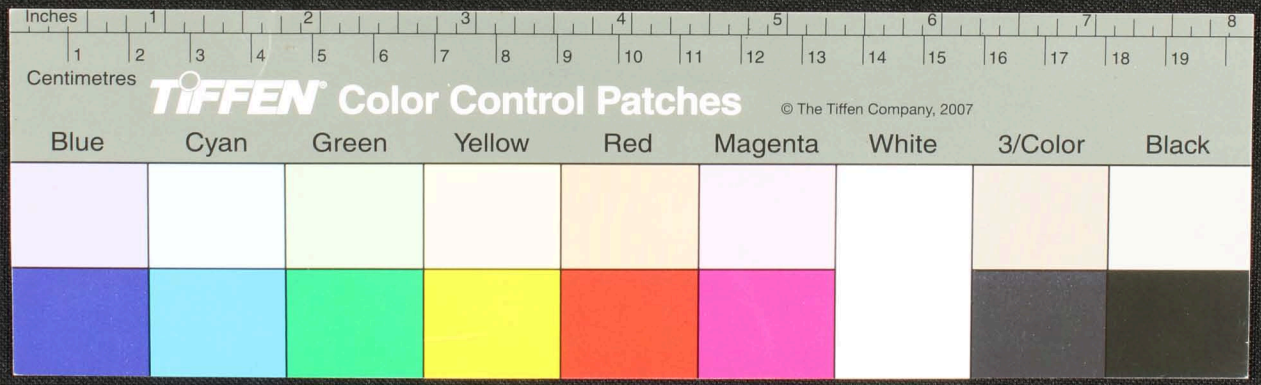
Handwritten text in Tamil script on a palm leaf manuscript. The text is arranged in approximately 10 horizontal lines. On the right side of the leaf, there are three diagrams or tables drawn with lines and small characters, possibly representing musical notation or a technical diagram. The leaf shows signs of age, including two dark circular spots.



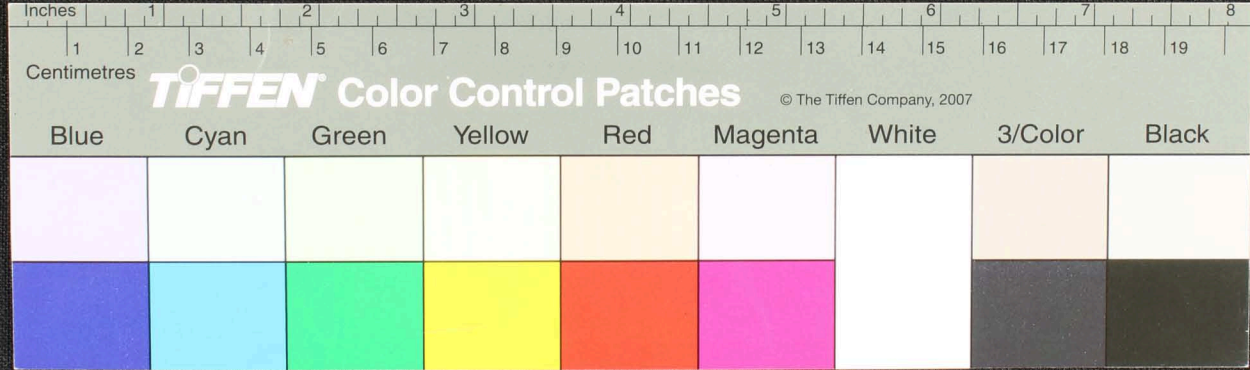
Handwritten Tamil script on a palm leaf manuscript. The text is arranged in approximately 10 horizontal lines, starting from the right side and moving left. The script is in an older form of the Tamil language. Two circular holes are visible along the length of the leaf, which were traditionally used for threading a cord to bind multiple leaves together into a book.



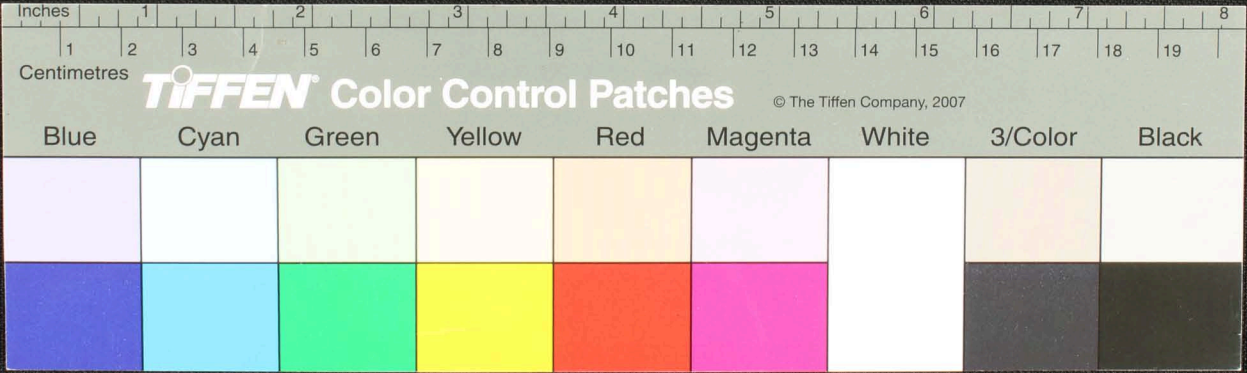
Handwritten Tamil script on a palm leaf manuscript. The text is arranged in approximately 10 horizontal lines across the length of the leaf. The script is a traditional form of the Tamil language. There are two circular holes visible on the leaf, which were traditionally used for threading a cord to bind multiple leaves together into a book format. The leaf shows signs of age, including some discoloration and wear.



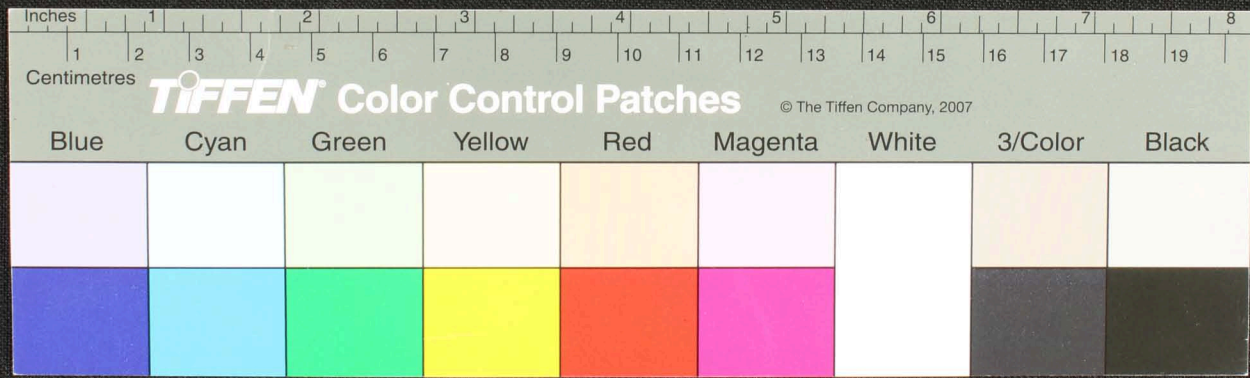
சம்பந்தம் இல்லாத ஒரு கடிதம் இது. இது உத்தர காங்கிரஸ் கட்சியின் சிபாரிசு மூலமாக உத்தர
 காக்லட் அமைப்பு உருவாகியது. இது உத்தர காங்கிரஸ் கட்சியின் உத்தரவால் உருவாகியது. இது உத்தர
 காங்கிரஸ் கட்சியின் உத்தரவால் உருவாகியது. இது உத்தர காங்கிரஸ் கட்சியின் உத்தரவால் உருவாகியது.
 இது உத்தர காங்கிரஸ் கட்சியின் உத்தரவால் உருவாகியது. இது உத்தர காங்கிரஸ் கட்சியின் உத்தரவால் உருவாகியது.
 இது உத்தர காங்கிரஸ் கட்சியின் உத்தரவால் உருவாகியது. இது உத்தர காங்கிரஸ் கட்சியின் உத்தரவால் உருவாகியது.



Handwritten Tamil script on a palm leaf manuscript. The text is arranged in approximately 10 horizontal lines. The script is finely etched into the surface of the dried leaf. There are two prominent circular holes along the length of the leaf, which were traditionally used for threading a cord to bind multiple leaves together into a book format. The leaf shows signs of age, with some discoloration and wear at the edges.

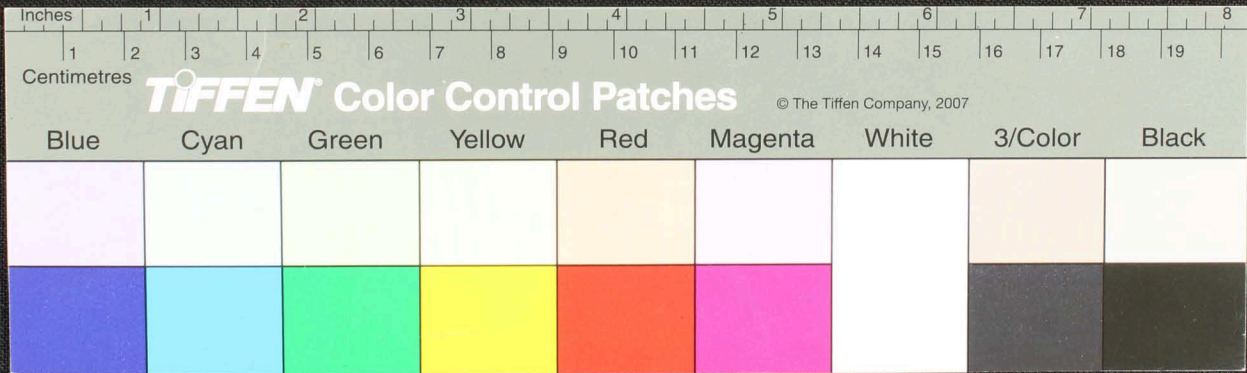


Handwritten Tamil script on a palm leaf manuscript. The text is arranged in approximately 10 horizontal lines across the length of the leaf. Two circular holes are visible, which were traditionally used for threading a cord to bind multiple leaves together into a book format.

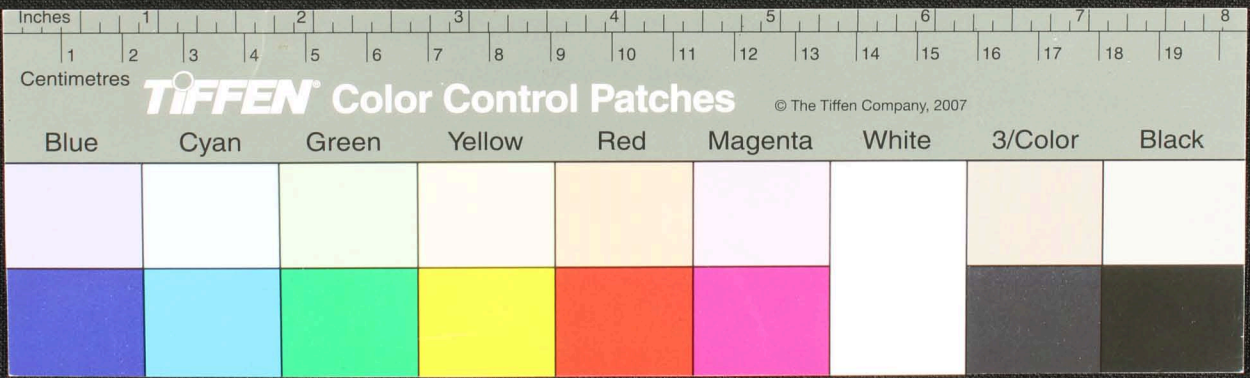


23
48

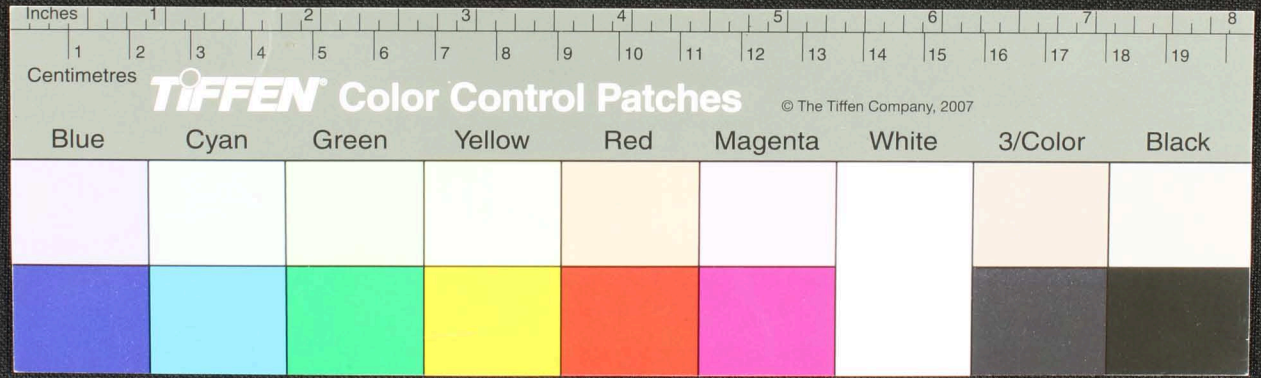
Handwritten Tamil script on a palm leaf manuscript. The text is arranged in approximately 10 horizontal lines across the length of the leaf. Two circular holes are visible, used for threading a cord to bind multiple leaves together.

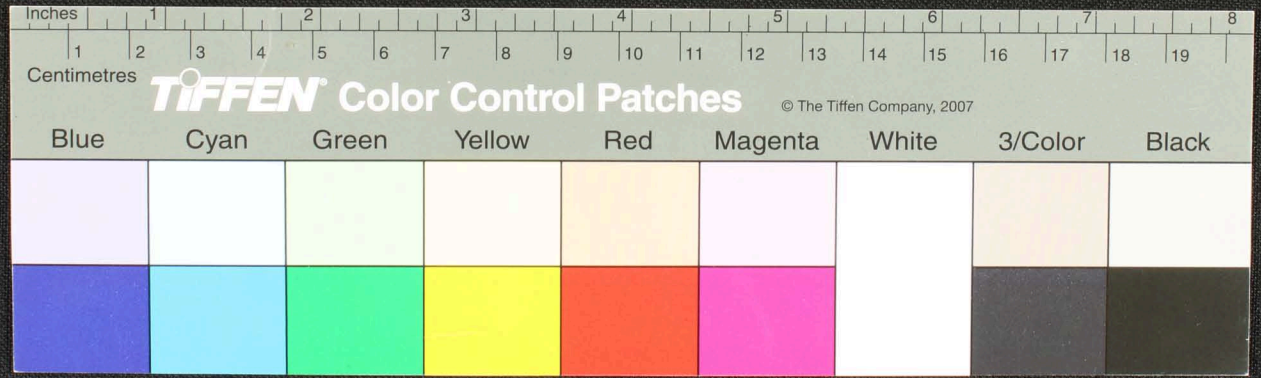
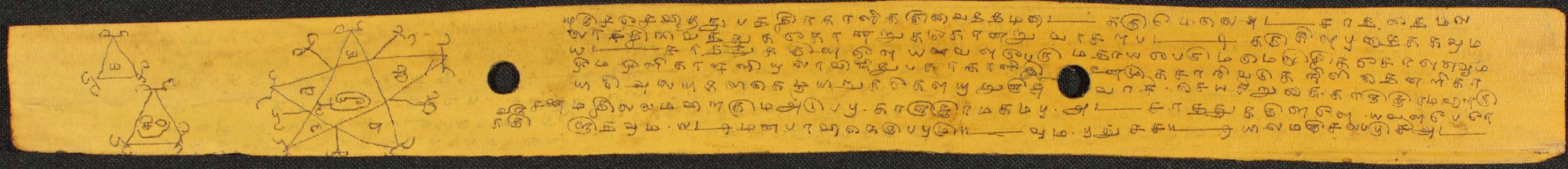


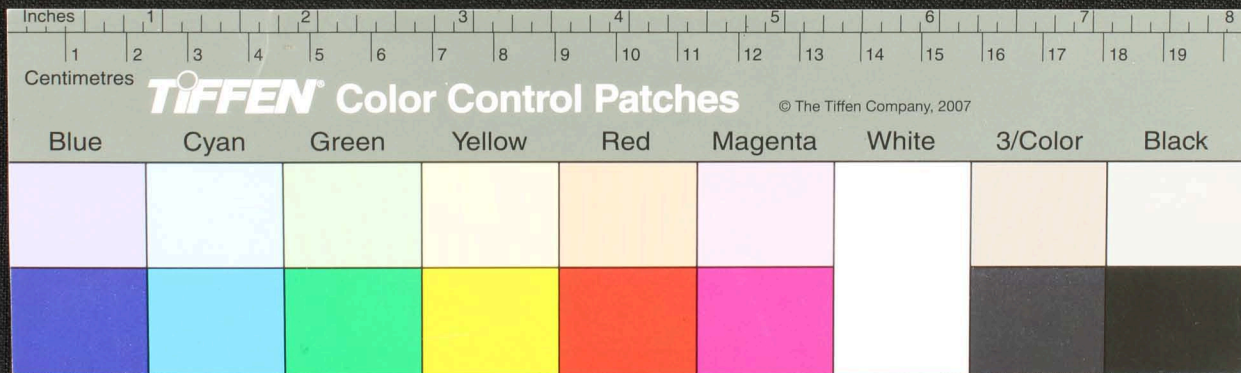
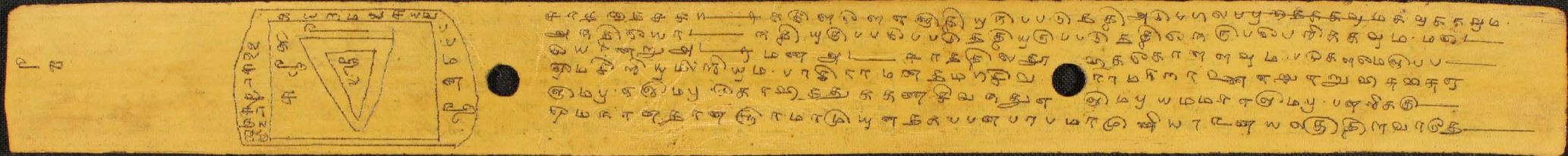
Handwritten text in Tamil script on a palm leaf manuscript. The text is arranged in approximately 10 horizontal lines. On the left side, there are two vertical inscriptions: the top one reads 'சுருதி' (Srutu) and the bottom one reads 'சுருதி' (Srutu). The main body of text contains several lines of script, with two prominent circular holes punched through the leaf for binding. The script is finely etched into the surface of the dried leaf.



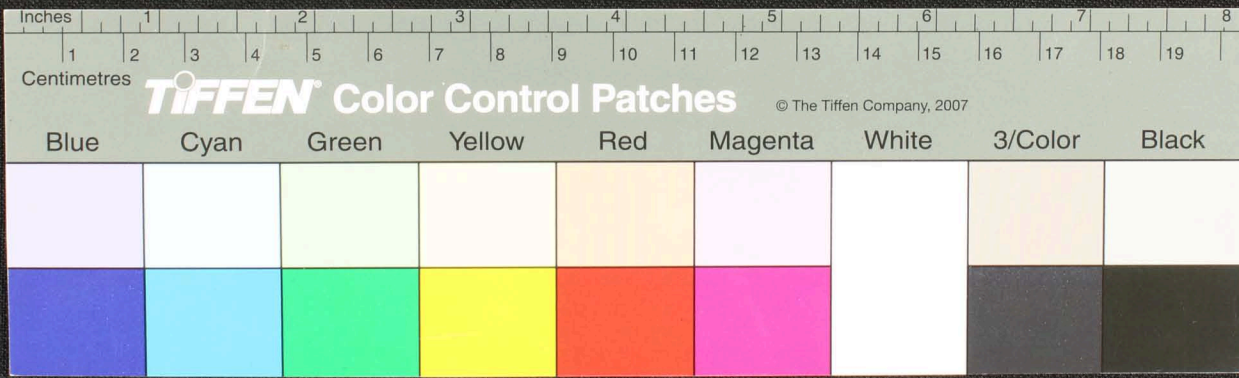
Handwritten text in Tamil script on a palm leaf manuscript. The text is arranged in approximately 10 horizontal lines across the length of the leaf. There are two circular holes visible on the leaf, which were traditionally used for threading a cord to bind multiple leaves together into a book format. The script is finely etched into the surface of the dried leaf.





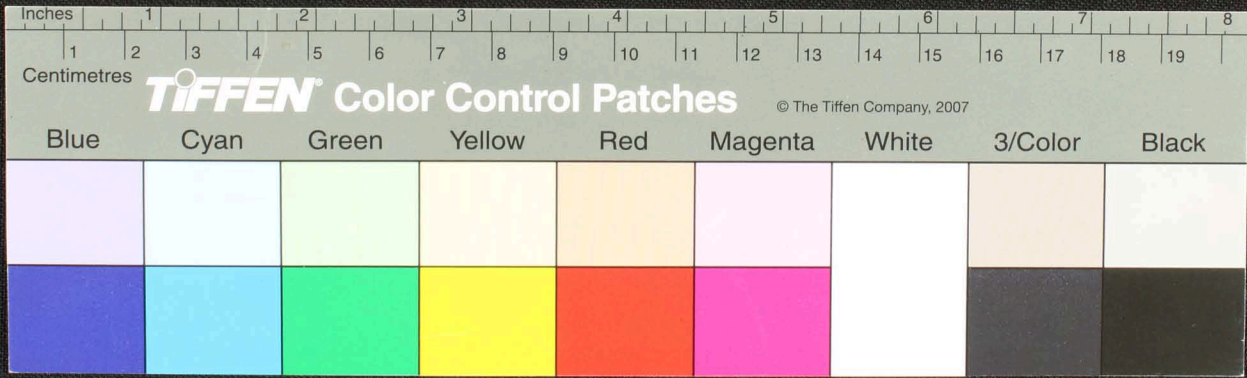


Handwritten Tamil script on a palm leaf manuscript. The text is arranged in approximately 10 horizontal lines. On the right side of the leaf, there is a small diagram consisting of a square grid with internal lines and circles, possibly representing a calendar or a specific ritual diagram. Two circular holes are visible on the leaf, used for threading a cord to bind multiple leaves together.

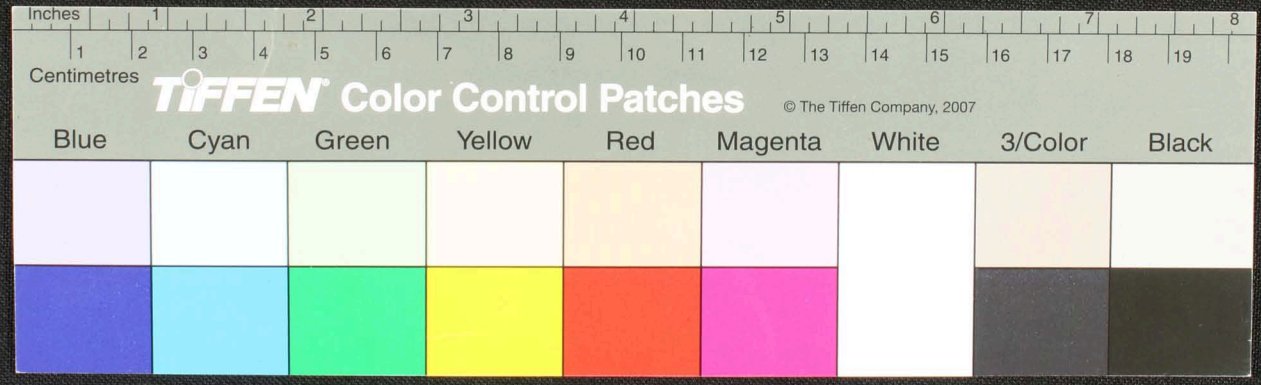


உர
 உயர்வு
 1990

 இவ்வுரையானது நம்முடைய மனங்களை வளர்த்துக் கொடுக்கின்ற வாய்ப்பாகும். இவ்வாய்ப்பை நாம் பயன்படுத்தி உயர்வு
 புகழ் பெற வேண்டும். உயர்வு புகழ் பெற வேண்டும். உயர்வு புகழ் பெற வேண்டும். உயர்வு புகழ் பெற வேண்டும். உயர்வு புகழ் பெற வேண்டும்.
 உயர்வு புகழ் பெற வேண்டும். உயர்வு புகழ் பெற வேண்டும். உயர்வு புகழ் பெற வேண்டும். உயர்வு புகழ் பெற வேண்டும். உயர்வு புகழ் பெற வேண்டும்.
 உயர்வு புகழ் பெற வேண்டும். உயர்வு புகழ் பெற வேண்டும். உயர்வு புகழ் பெற வேண்டும். உயர்வு புகழ் பெற வேண்டும். உயர்வு புகழ் பெற வேண்டும்.
 உயர்வு புகழ் பெற வேண்டும். உயர்வு புகழ் பெற வேண்டும். உயர்வு புகழ் பெற வேண்டும். உயர்வு புகழ் பெற வேண்டும். உயர்வு புகழ் பெற வேண்டும்.



Handwritten Tamil script on a palm leaf manuscript. The text is arranged in approximately 10 horizontal lines. On the right side of the leaf, there is a small geometric diagram consisting of a triangle with a vertical line extending from its top vertex to its base, and a horizontal line extending from the right vertex to the vertical line. The script is written in a traditional style with dark ink on the natural yellowish-brown surface of the leaf.



உரு
பலகையின்
உள்ளே

பொருள் உகடுவதற்கு மகிழ்வு உண்டாயிருக்கிறது கையெழுத்து எழுத்துவரை உகடுவதற்கு உருப்படுத்தும்
உருவிற்கு உகடுவதற்கு உகடுவதற்கு உகடுவதற்கு உகடுவதற்கு உகடுவதற்கு உகடுவதற்கு உகடுவதற்கு உகடுவதற்கு
கையெழுத்து உகடுவதற்கு உகடுவதற்கு உகடுவதற்கு உகடுவதற்கு உகடுவதற்கு உகடுவதற்கு உகடுவதற்கு உகடுவதற்கு
பொருள் உகடுவதற்கு உகடுவதற்கு உகடுவதற்கு உகடுவதற்கு உகடுவதற்கு உகடுவதற்கு உகடுவதற்கு உகடுவதற்கு
கையெழுத்து உகடுவதற்கு உகடுவதற்கு உகடுவதற்கு உகடுவதற்கு உகடுவதற்கு உகடுவதற்கு உகடுவதற்கு உகடுவதற்கு
பொருள் உகடுவதற்கு உகடுவதற்கு உகடுவதற்கு உகடுவதற்கு உகடுவதற்கு உகடுவதற்கு உகடுவதற்கு உகடுவதற்கு
கையெழுத்து உகடுவதற்கு உகடுவதற்கு உகடுவதற்கு உகடுவதற்கு உகடுவதற்கு உகடுவதற்கு உகடுவதற்கு உகடுவதற்கு
பொருள் உகடுவதற்கு உகடுவதற்கு உகடுவதற்கு உகடுவதற்கு உகடுவதற்கு உகடுவதற்கு உகடுவதற்கு உகடுவதற்கு
கையெழுத்து உகடுவதற்கு உகடுவதற்கு உகடுவதற்கு உகடுவதற்கு உகடுவதற்கு உகடுவதற்கு உகடுவதற்கு உகடுவதற்கு
பொருள் உகடுவதற்கு உகடுவதற்கு உகடுவதற்கு உகடுவதற்கு உகடுவதற்கு உகடுவதற்கு உகடுவதற்கு உகடுவதற்கு
கையெழுத்து உகடுவதற்கு உகடுவதற்கு உகடுவதற்கு உகடுவதற்கு உகடுவதற்கு உகடுவதற்கு உகடுவதற்கு உகடுவதற்கு

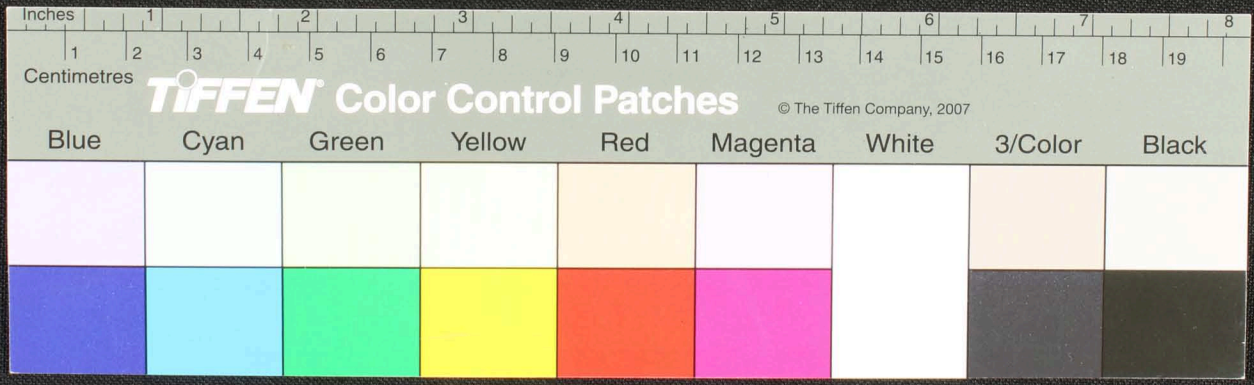
Inches 1 2 3 4 5 6 7 8

Centimetres 1 2 3 4 5 6 7 8 9 10 11 12 13 14 15 16 17 18 19

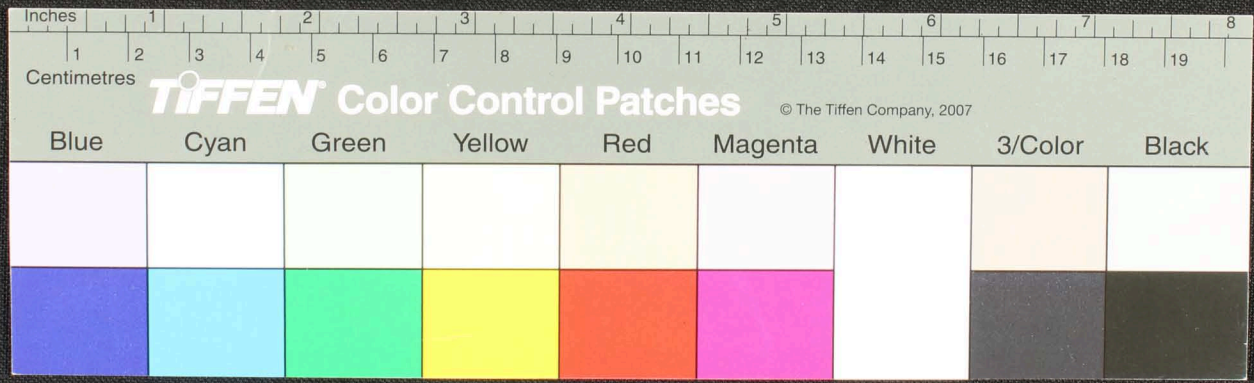
TIFFEN Color Control Patches © The Tiffen Company, 2007

Blue	Cyan	Green	Yellow	Red	Magenta	White	3/Color	Black

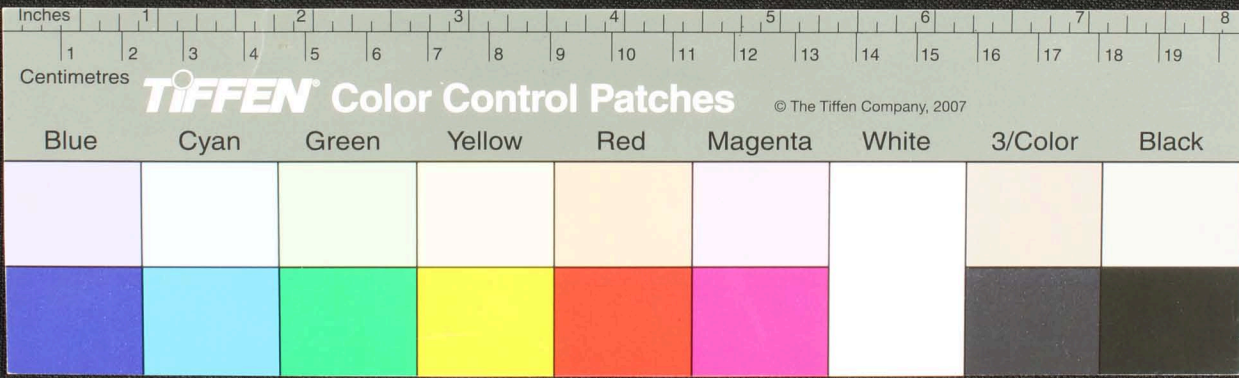
Handwritten Tamil script on a palm leaf manuscript. The text is arranged in approximately 10 horizontal lines across the length of the leaf. The script is finely etched into the surface of the dried leaf. There are two circular holes visible, which were traditionally used for threading a cord to bind multiple leaves together into a book format.



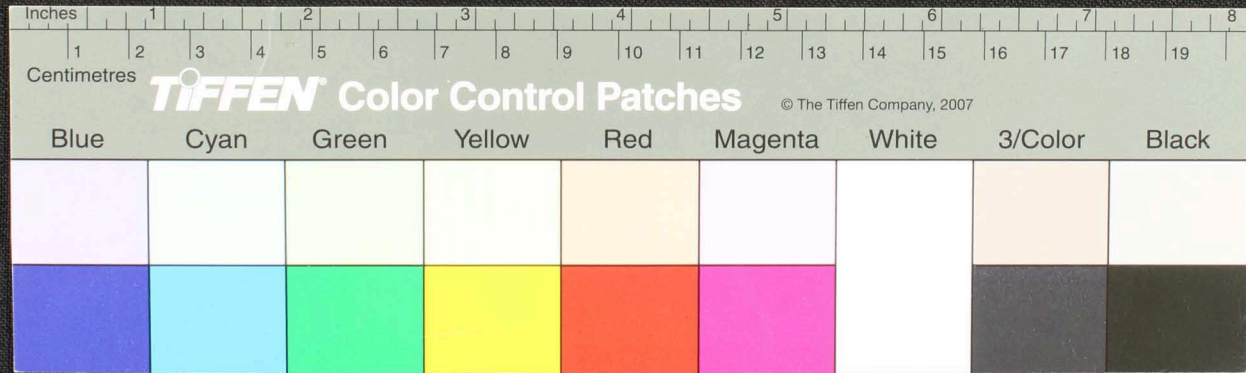
கருணாகர சிவனாழ்வார் கிருஷ்ணமூர்த்தியார் கிருஷ்ணமூர்த்தியார் கிருஷ்ணமூர்த்தியார் கிருஷ்ணமூர்த்தியார்
 கிருஷ்ணமூர்த்தியார் கிருஷ்ணமூர்த்தியார் கிருஷ்ணமூர்த்தியார் கிருஷ்ணமூர்த்தியார் கிருஷ்ணமூர்த்தியார்
 கிருஷ்ணமூர்த்தியார் கிருஷ்ணமூர்த்தியார் கிருஷ்ணமூர்த்தியார் கிருஷ்ணமூர்த்தியார் கிருஷ்ணமூர்த்தியார்
 கிருஷ்ணமூர்த்தியார் கிருஷ்ணமூர்த்தியார் கிருஷ்ணமூர்த்தியார் கிருஷ்ணமூர்த்தியார் கிருஷ்ணமூர்த்தியார்
 கிருஷ்ணமூர்த்தியார் கிருஷ்ணமூர்த்தியார் கிருஷ்ணமூர்த்தியார் கிருஷ்ணமூர்த்தியார் கிருஷ்ணமூர்த்தியார்
 கிருஷ்ணமூர்த்தியார் கிருஷ்ணமூர்த்தியார் கிருஷ்ணமூர்த்தியார் கிருஷ்ணமூர்த்தியார் கிருஷ்ணமூர்த்தியார்



Handwritten Tamil script on a palm leaf manuscript. The text is arranged in approximately 10 horizontal lines. On the left side, there is a vertical inscription that reads "சென்னை" (Chennai) and "1855". Two circular holes are visible on the leaf, which were traditionally used for threading a cord to bind multiple leaves together.

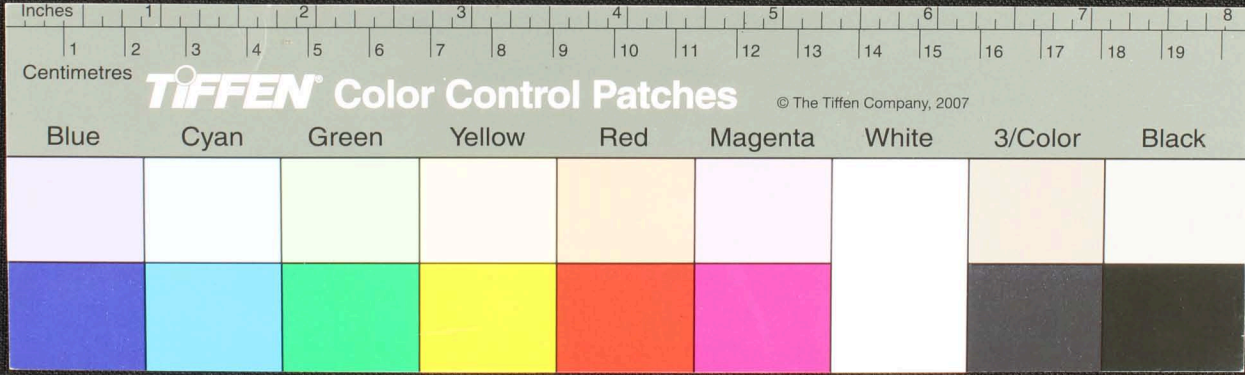


Handwritten Tamil script on a palm leaf manuscript. The text is arranged in approximately 10 horizontal lines. On the right side of the leaf, there is a geometric diagram consisting of a square with a diamond (rhombus) inscribed within it. The vertices and midpoints of the diamond are labeled with numbers 1 through 10. The script appears to be a form of Tamil used for technical or scientific purposes, possibly related to geometry or astronomy.

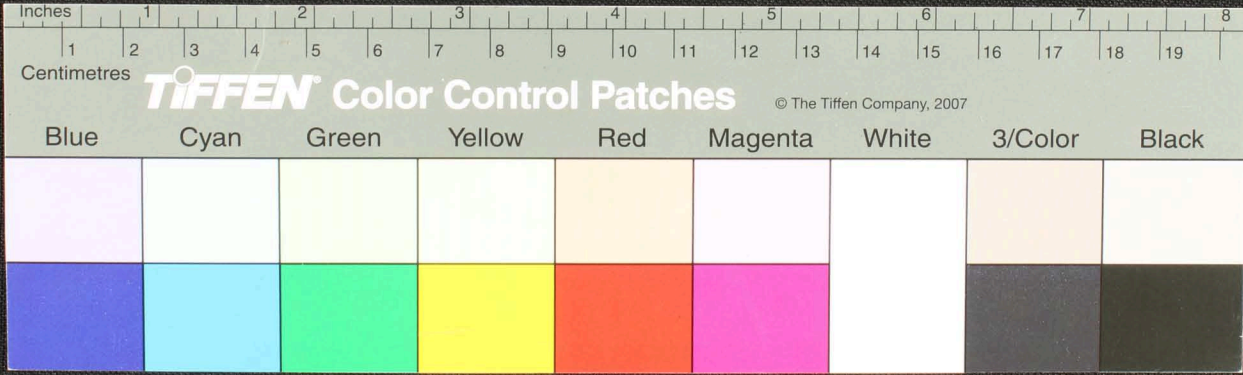


12

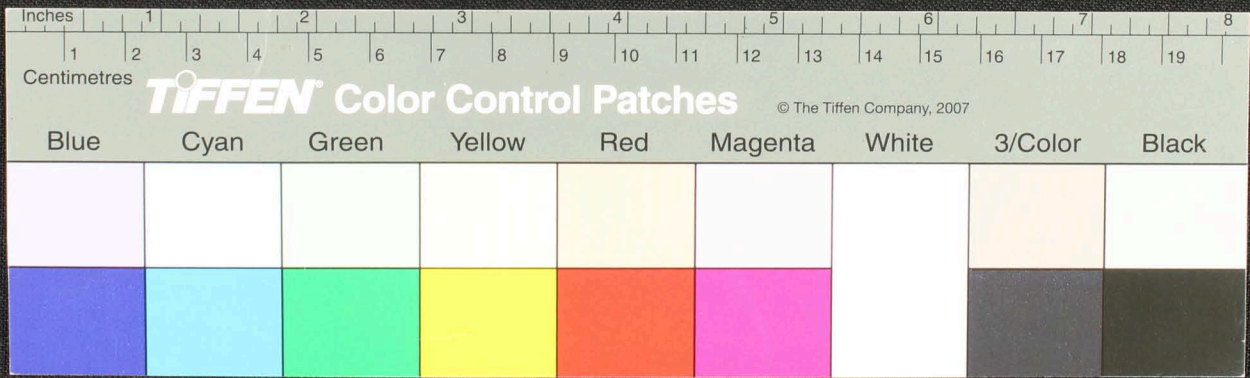
சிவகாமசுந்தரி நன்னாள். மீளக்கூறுதலாய் வரமலர் அனைத்துமே தனியாகவென்பாரிசுநகனையும
 ய்திரையாழ்காரகாண்பதைடு மகமநகனனானுநிராகரநியமவநிதினான்வநகனனததயின
 துமலலலநதயநிநதிடய ஸ்வயயுலவசுநநிதிநிநதயனை நகையளிப்பாநகலநதிநிநந
 சமனநநிநிநதயனைநக மரநிநதயனைநதயவரநயவரநதததி வவநகனனானுலபயுநதயவ
 யுநதயசசுநிபாநதயநிநமசகஸாநததபவசசுநிநகலபவசசுநிநதயுமயுநாநதயுமயுந
 ஸாநததயுநிநாநத தமநிநகநிநாநாநகநகாபதிநிநிநசகநாமதிடுமநசகநாமதிடு



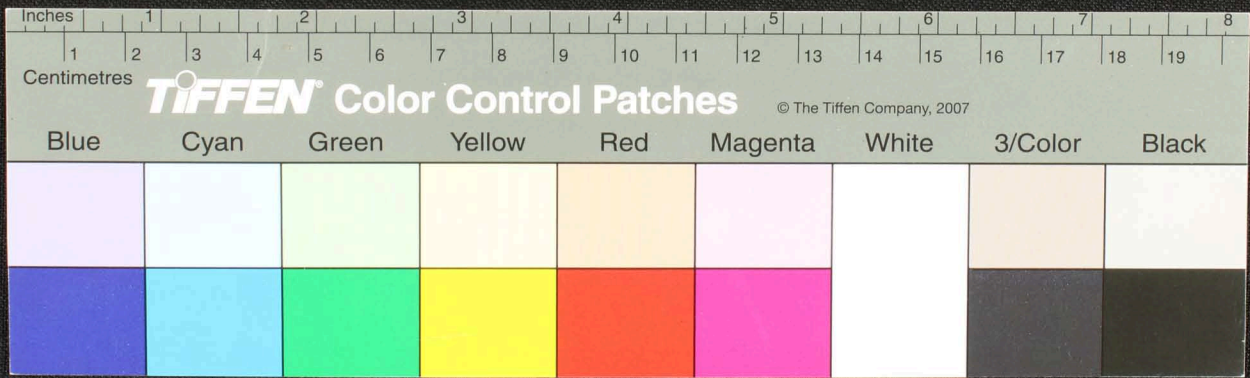
Handwritten text in Tamil script on a palm leaf. The text is arranged in several lines and appears to be a historical record or a list of items. Some parts are circled in red ink. The script is densely packed and covers most of the length of the leaf.



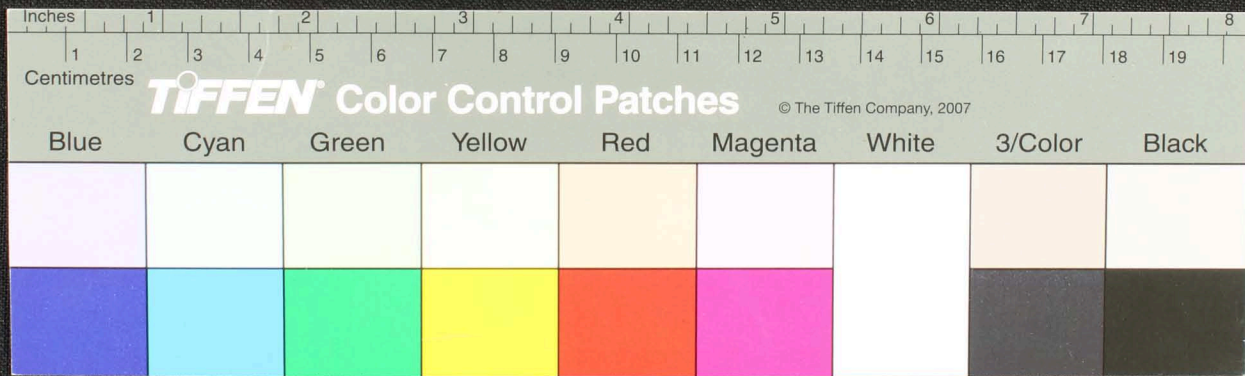
Handwritten text in Tamil script on a palm leaf manuscript. The text is arranged in approximately 10 horizontal lines across the length of the leaf. Two circular holes are visible, used for binding multiple leaves together.



Handwritten text in Tamil script on a palm leaf. The text is arranged in approximately 10 horizontal lines. The script is dense and appears to be a form of classical or historical Tamil. There are two distinct circular holes punched through the leaf, one at approximately the 3.5-inch mark and another at the 6.5-inch mark. The leaf itself is a light yellowish-brown color and shows signs of age and wear.

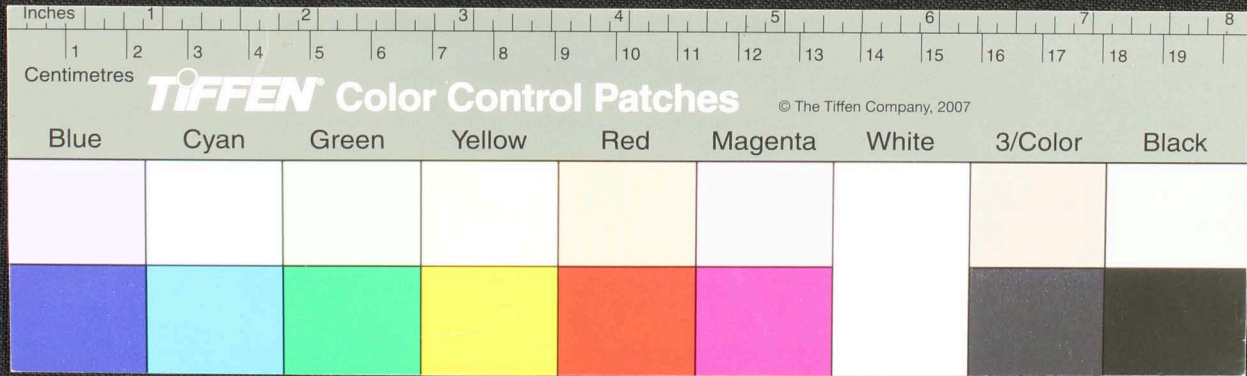


Handwritten text in Tamil script on a palm leaf manuscript. The text is arranged in approximately 10 horizontal lines. Two circular holes are visible, which were traditionally used for threading a cord to bind multiple leaves together. The script is finely etched into the surface of the dried leaf.

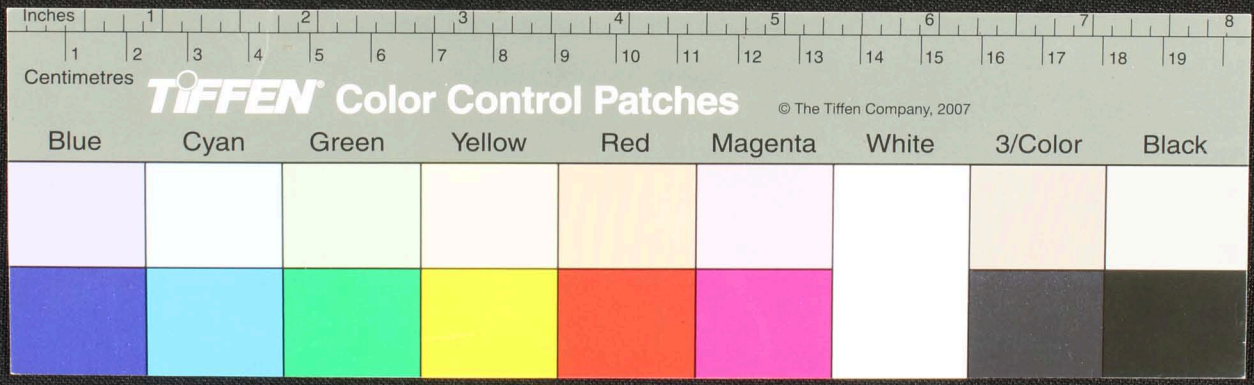


56

கதிவினயுபினயுபுதிதலகதிசுதிபவநயலம.கதிவனயுபு—யநதரபாக.டு.மதி—கதித
நயுபுபினய.சுமல—குநயநதிபினயபுகயுசுககநயநதிபினயநய.செயசுநுத
மதிசுநயமநதிம—குநதிபயநதிம—மாரசுபாகதிம—பெமபெயகதி
மதி—மதிசுநதிம—மதிசுநதிம—மதிசுநதிம—மதிசுநதிம—மதிசுநதிம
மதிசுநதிம—மதிசுநதிம—மதிசுநதிம—மதிசுநதிம—மதிசுநதிம—மதிசுநதிம
மதிசுநதிம—மதிசுநதிம—மதிசுநதிம—மதிசுநதிம—மதிசுநதிம—மதிசுநதிம
மதிசுநதிம—மதிசுநதிம—மதிசுநதிம—மதிசுநதிம—மதிசுநதிம—மதிசுநதிம

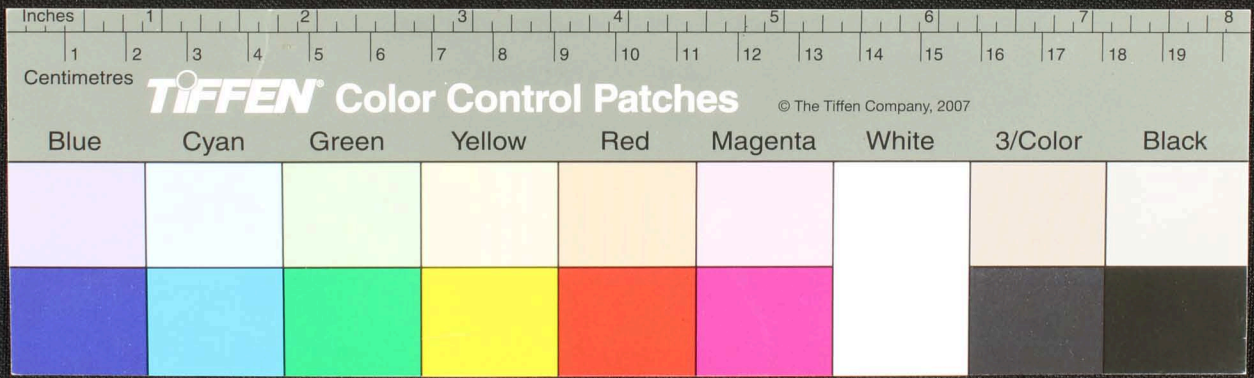


இராசராசன்னை நாயக்கன் குடிபுலவாழ் அமரமணி வரையல்காரன் இராசரென்னை நாயக்கன்
 ஆம. யரநாடு வகையன் ஆம. மகிசலவாழ் யமுளையன் நாயக்கன் குடிபுலவாழ் அமரமணி வரையல்காரன்
 பாலகையத்து நெய்தல் குடிபுலவாழ் அமரமணி வரையல்காரன் இராசரென்னை நாயக்கன்
 யமுளையத்து நெய்தல் குடிபுலவாழ் அமரமணி வரையல்காரன் இராசரென்னை நாயக்கன்
 இராசரென்னை நாயக்கன் இராசரென்னை நாயக்கன் இராசரென்னை நாயக்கன் இராசரென்னை நாயக்கன்
 இராசரென்னை நாயக்கன் இராசரென்னை நாயக்கன் இராசரென்னை நாயக்கன் இராசரென்னை நாயக்கன்

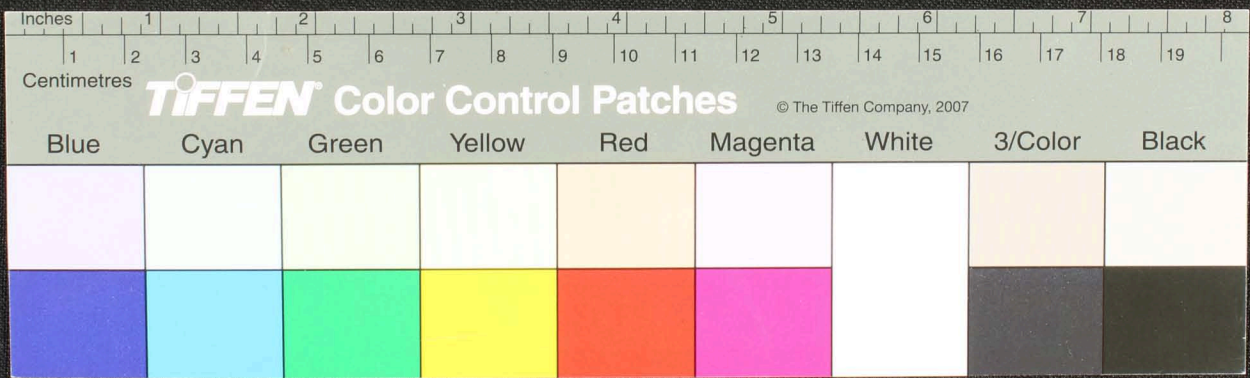


R 11

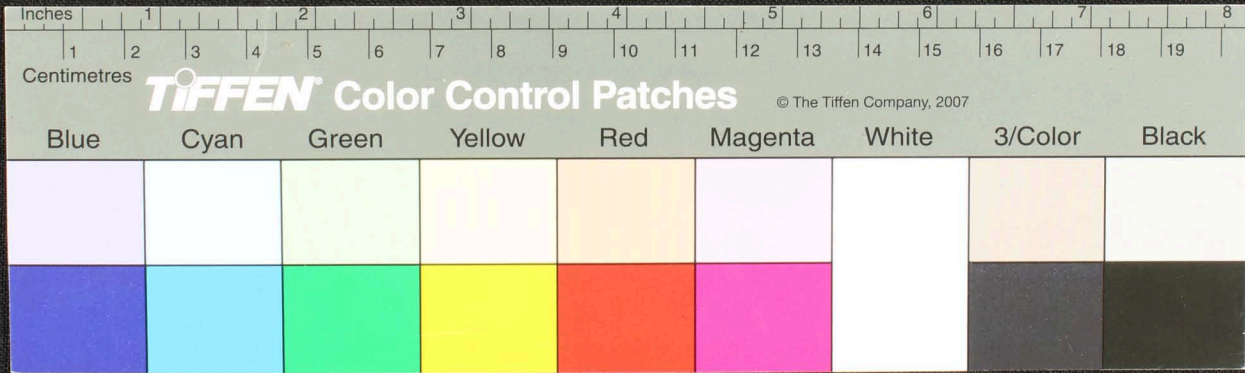
Handwritten Tamil script on a palm leaf manuscript strip. The text is arranged in approximately 10 horizontal lines. Two circular holes are visible, used for threading a cord to bind multiple leaves together. The script is a traditional form of Tamil used for literary or religious purposes.



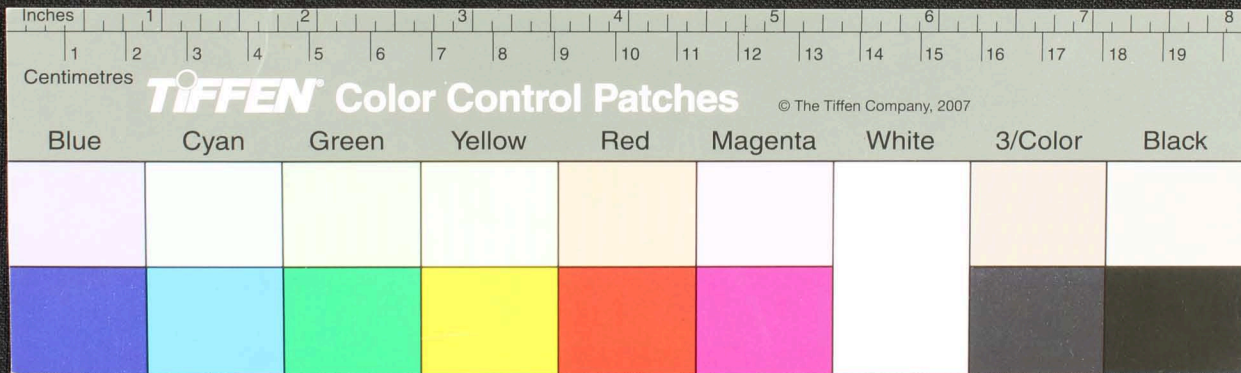
Handwritten text in Tamil script on a palm leaf manuscript. The text is arranged in approximately 12 horizontal lines. There are two circular holes punched through the leaf, one at approximately the 4-inch mark and another at the 16-inch mark. On the left edge, there is a small handwritten mark that appears to be '37'. On the right edge, there is a vertical inscription that reads 'சென்னை' (Chennai) and '1850'.



கருவிகளில் சிவப்பாக... கருவிகளில் சிவப்பாக... கருவிகளில் சிவப்பாக... கருவிகளில் சிவப்பாக... கருவிகளில் சிவப்பாக...
 கருவிகளில் சிவப்பாக... கருவிகளில் சிவப்பாக... கருவிகளில் சிவப்பாக... கருவிகளில் சிவப்பாக... கருவிகளில் சிவப்பாக...
 கருவிகளில் சிவப்பாக... கருவிகளில் சிவப்பாக... கருவிகளில் சிவப்பாக... கருவிகளில் சிவப்பாக... கருவிகளில் சிவப்பாக...
 கருவிகளில் சிவப்பாக... கருவிகளில் சிவப்பாக... கருவிகளில் சிவப்பாக... கருவிகளில் சிவப்பாக... கருவிகளில் சிவப்பாக...
 கருவிகளில் சிவப்பாக... கருவிகளில் சிவப்பாக... கருவிகளில் சிவப்பாக... கருவிகளில் சிவப்பாக... கருவிகளில் சிவப்பாக...



Handwritten text in Tamil script on a palm leaf manuscript. The text is arranged in approximately 10 horizontal lines across the length of the leaf. The script is finely etched into the surface of the dried leaf. The leaf shows signs of aging, with some dark spots and a slightly uneven texture.





















Handwritten text in Tamil script, possibly a historical record or document, written on aged paper. The text is arranged in several lines across the length of the strip. On the left side, there are two lines of text: "கச்சுரம்" and "கர" (likely a date or location). The main body of text includes several lines of cursive script with some underlined words and small circular marks or holes.

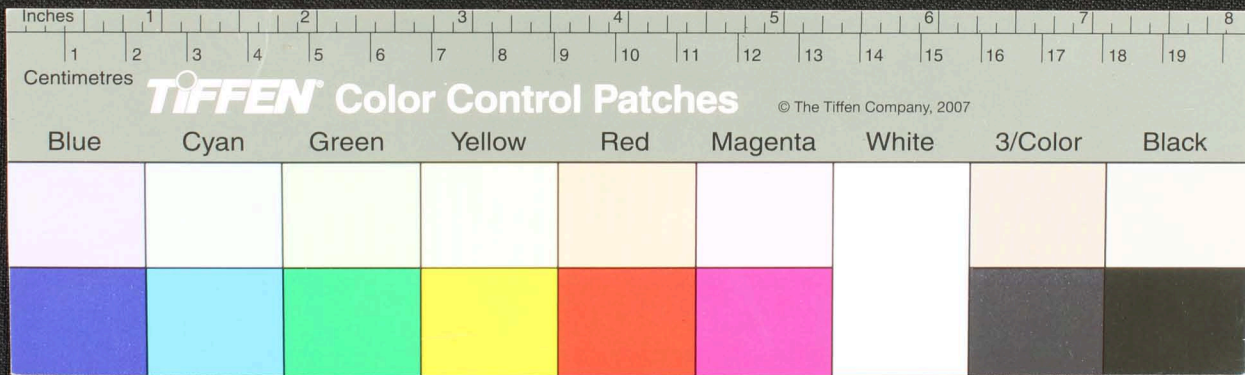
Inches 1 2 3 4 5 6 7 8

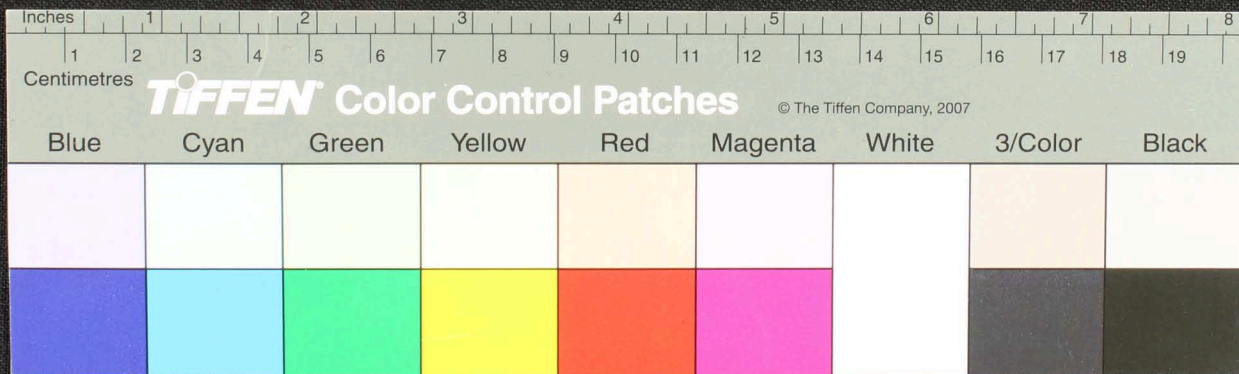
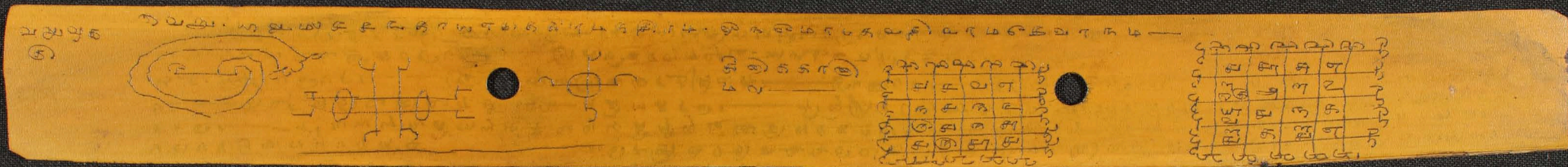
Centimetres 1 2 3 4 5 6 7 8 9 10 11 12 13 14 15 16 17 18 19

TIFFEN Color Control Patches © The Tiffen Company, 2007

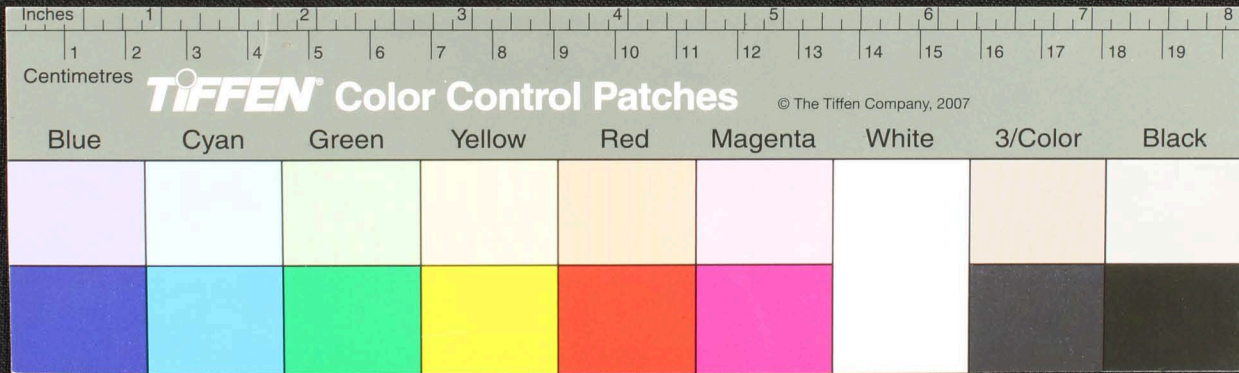
Blue	Cyan	Green	Yellow	Red	Magenta	White	3/Color	Black
								
								

Handwritten Tamil script on a palm leaf manuscript. The text is arranged in approximately 10 horizontal lines across the length of the leaf. Two circular holes are visible, which were traditionally used for threading a cord to bind multiple leaves together into a book format. The script is densely packed and appears to be a form of classical or historical Tamil.





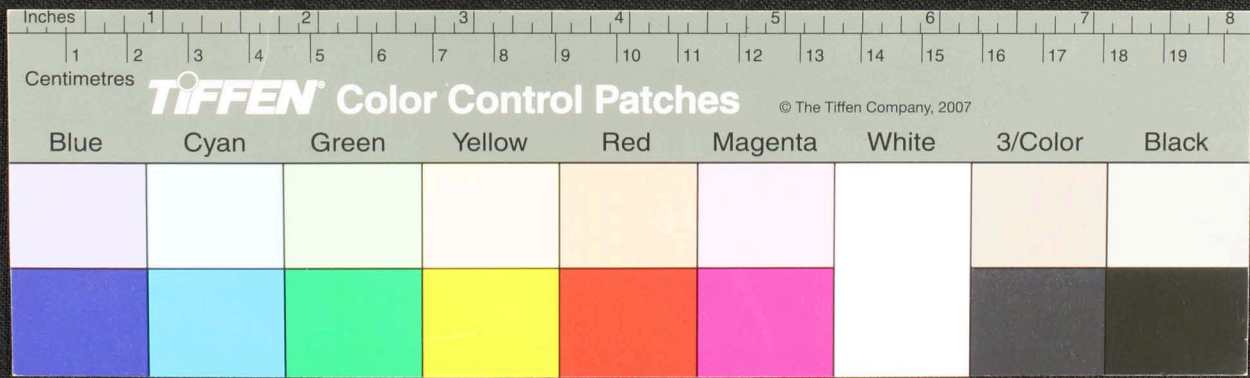
Handwritten Tamil script on a palm leaf manuscript. The text is arranged in several lines across the length of the leaf. On the left side, there is a circular diagram with a crosshair and some annotations. Two circular holes are visible, used for binding multiple leaves together.



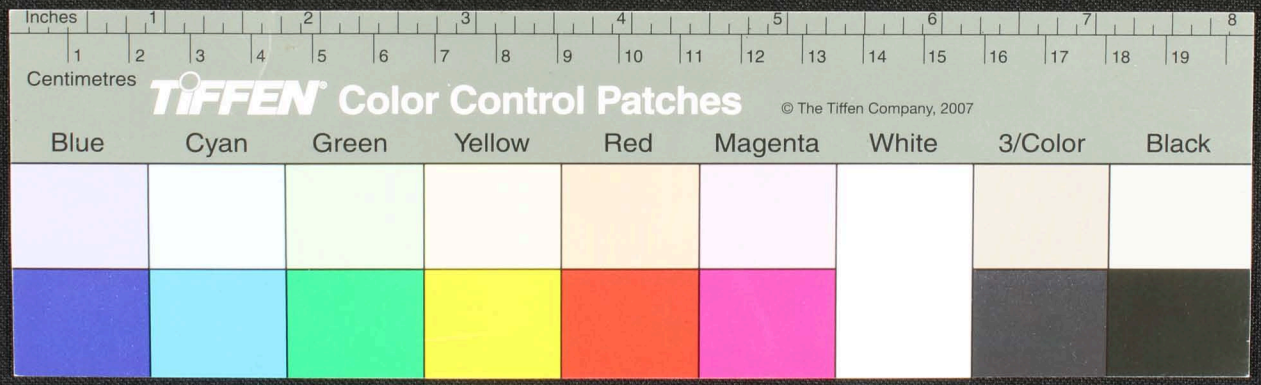
Handwritten text on a palm leaf manuscript strip, featuring musical notation on the left and dense script on the right.

On the left side, there is a musical score with a treble clef and a key signature of one flat (B-flat). The notes are written on a five-line staff. Above the staff, there are some characters that appear to be "B" and "P".

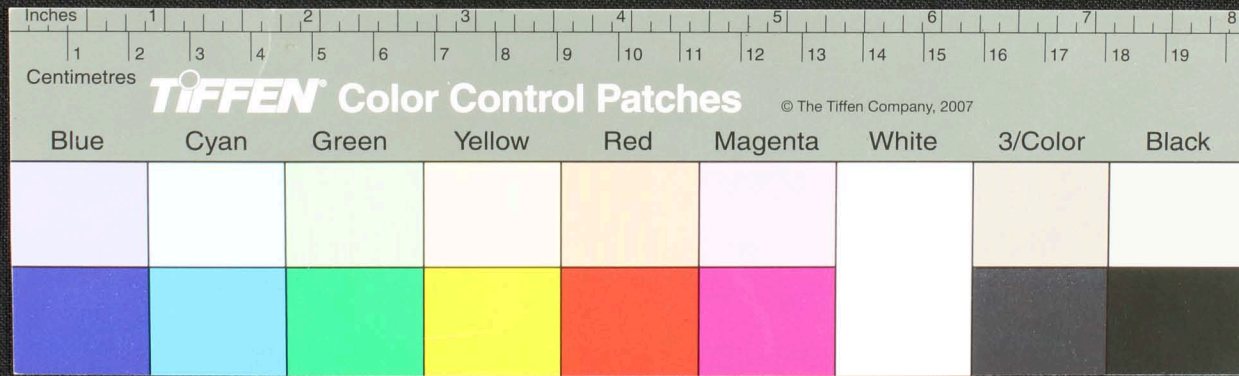
The right side of the strip contains several lines of dense handwritten text in a South Indian script, likely Grantha or Tamil. The text is arranged in approximately 10 horizontal lines.



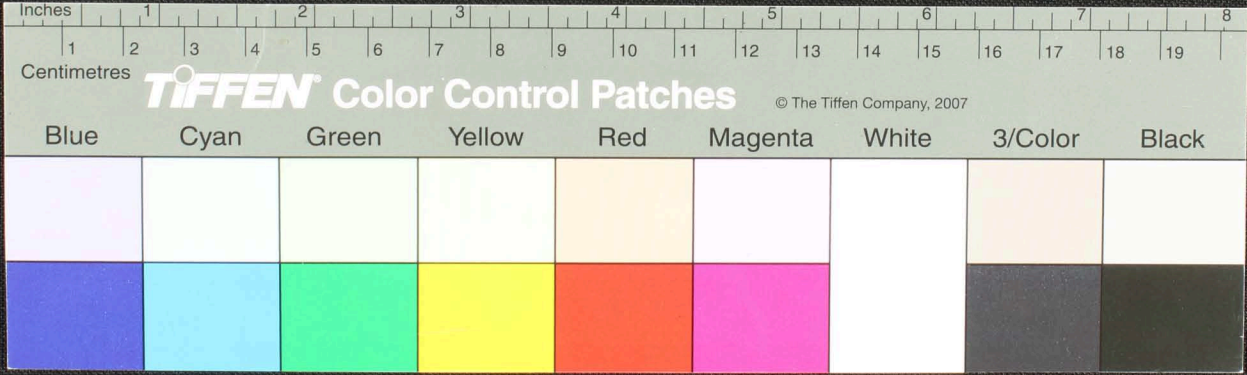
Handwritten text in Tamil script on a palm leaf manuscript. The text is arranged in approximately 10 horizontal lines. On the left side, there are two small handwritten numbers, '3' and '2', stacked vertically. Two circular holes are visible on the leaf, used for binding multiple leaves together.



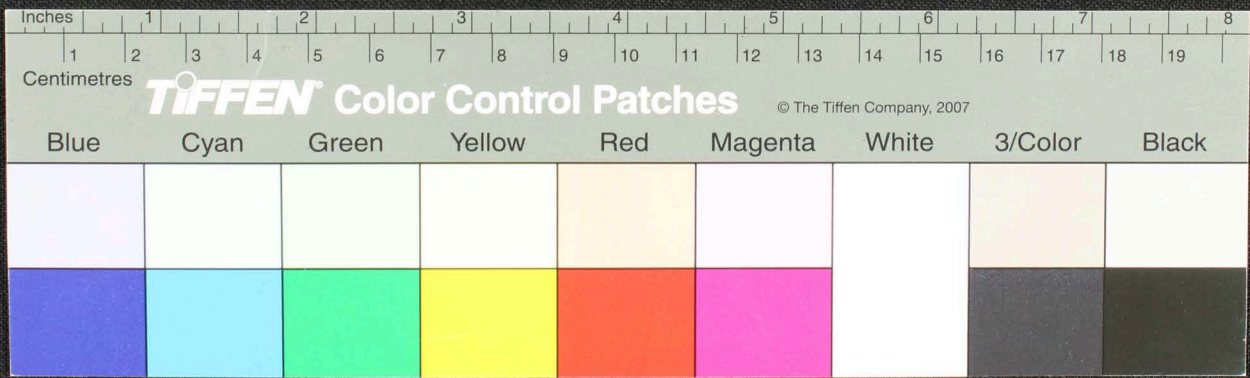
Handwritten text in Tamil script on a palm leaf manuscript. The text is arranged in approximately 10 horizontal lines across the length of the leaf. Two circular holes are visible, which were traditionally used for threading a cord to bind multiple leaves together into a book format. The script is finely etched into the surface of the dried leaf.



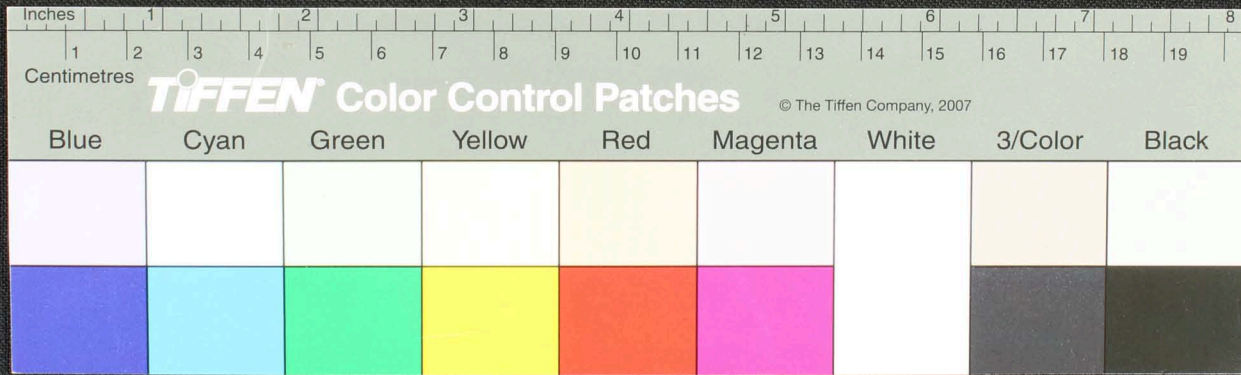
Handwritten text in Tamil script on a palm leaf manuscript. The text is arranged in approximately 10 horizontal lines across the length of the leaf. Two circular holes are visible, used for binding multiple leaves together. The script is finely etched into the surface of the dried leaf.



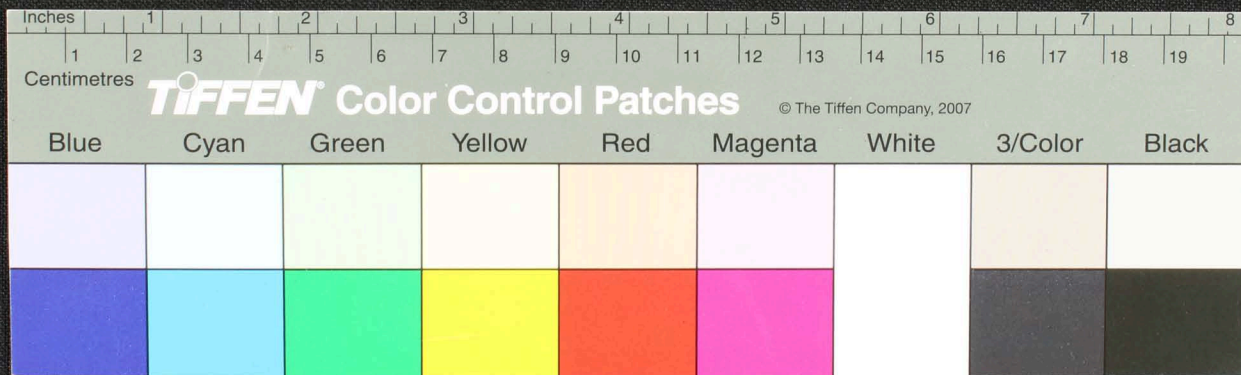
Handwritten Tamil script on a palm leaf manuscript. The text is arranged in approximately 10 horizontal lines across the length of the leaf. On the far left edge, there is a vertical inscription of the number '55'. Two circular holes are visible, which were traditionally used for threading a cord to bind multiple leaves together into a book format.



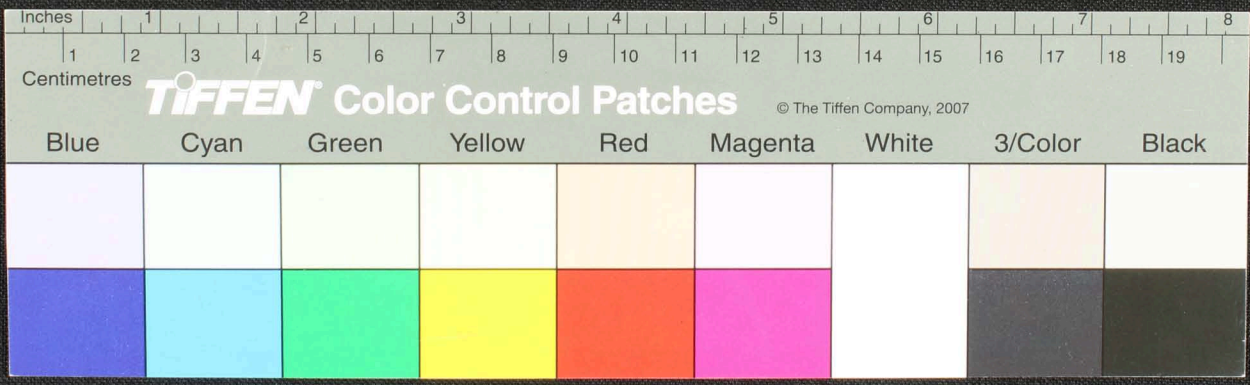
Handwritten Tamil script on a palm leaf manuscript. The text is arranged in approximately 10 horizontal lines across the length of the leaf. The script is a traditional form of the Tamil language, likely used for religious or philosophical purposes. There are several circular holes along the length of the leaf, which were traditionally used for threading a cord to bind multiple leaves together into a book format.



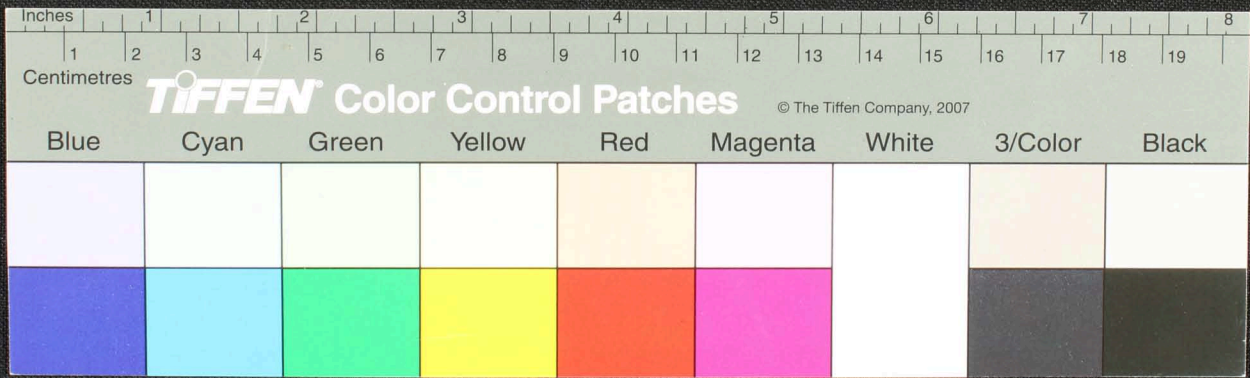
Handwritten text in Tamil script on a palm leaf manuscript. The text is arranged in approximately 10 horizontal lines across the length of the leaf. Two circular holes are visible, which were traditionally used for threading a cord to bind multiple leaves together into a book format. The script is finely etched into the surface of the dried leaf.



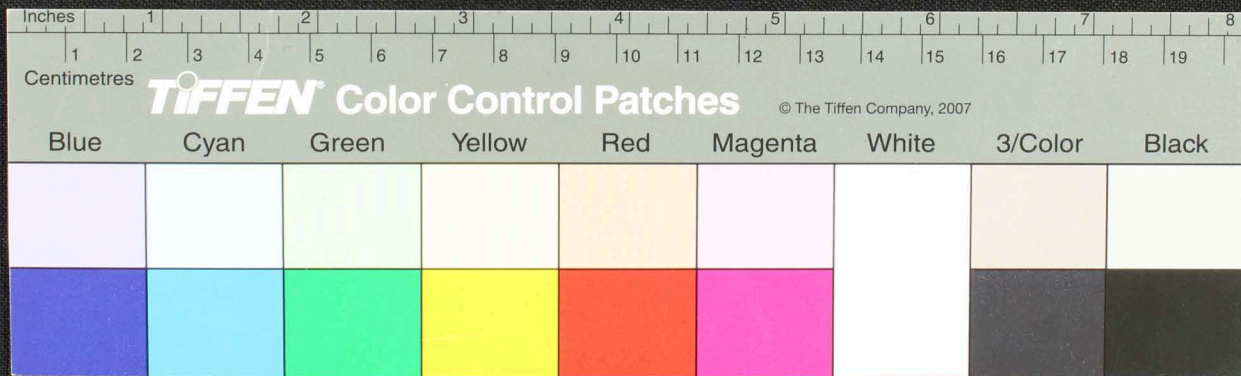
Handwritten Tamil script on a palm leaf manuscript. The text is arranged in approximately 10 horizontal lines. On the left side, there is a small triangular diagram with a vertical line and a horizontal line, possibly representing a geometric or astronomical concept. The script is finely etched into the surface of the dried leaf.



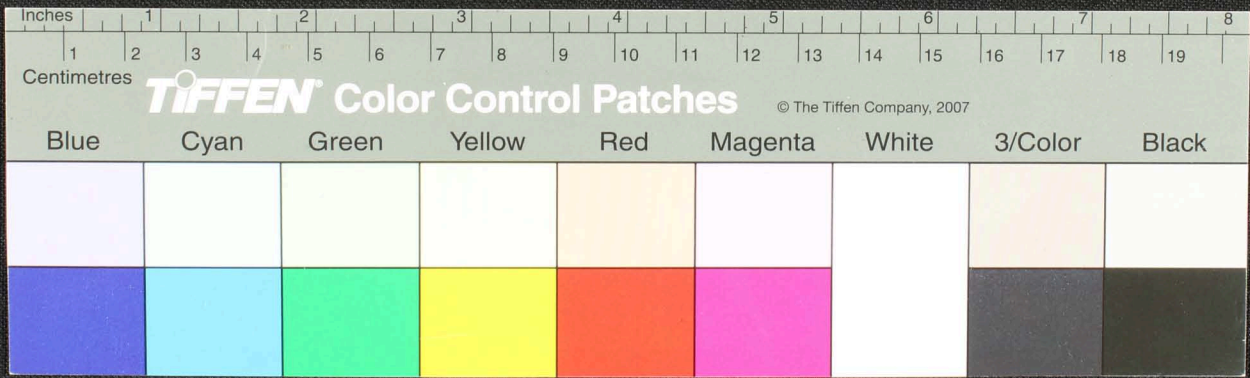
Handwritten Tamil script on a palm leaf manuscript. The text is arranged in approximately 10 horizontal lines. On the left side, there are vertical annotations including the number '68' and the name 'சு. சிவசுந்தரி' (S. Sivachandari). The main body of text contains several lines of script, with two circular holes visible, which were traditionally used for threading a cord to bind multiple leaves together into a book format.



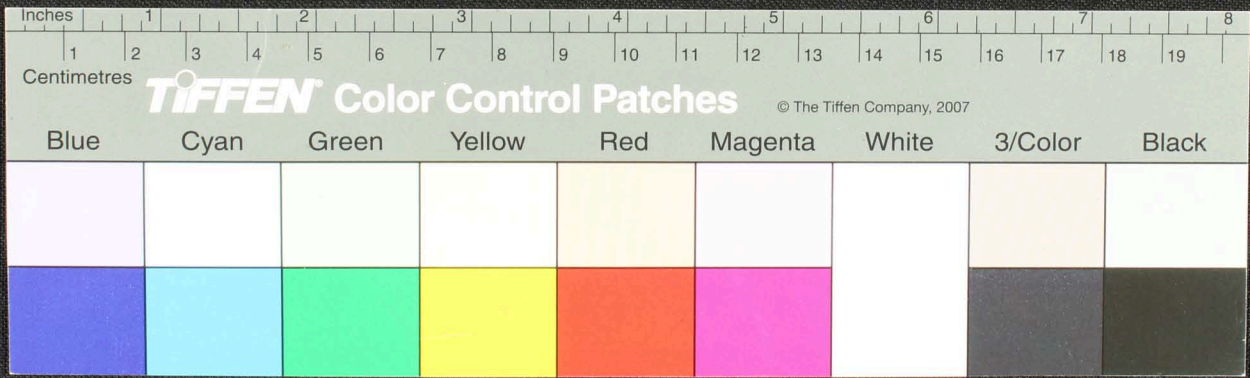
Handwritten text in Tamil script on a palm leaf manuscript. The text is arranged in approximately 10 horizontal lines. Two circular holes are visible, used for binding multiple leaves together. The script is finely etched into the surface of the dried leaf.



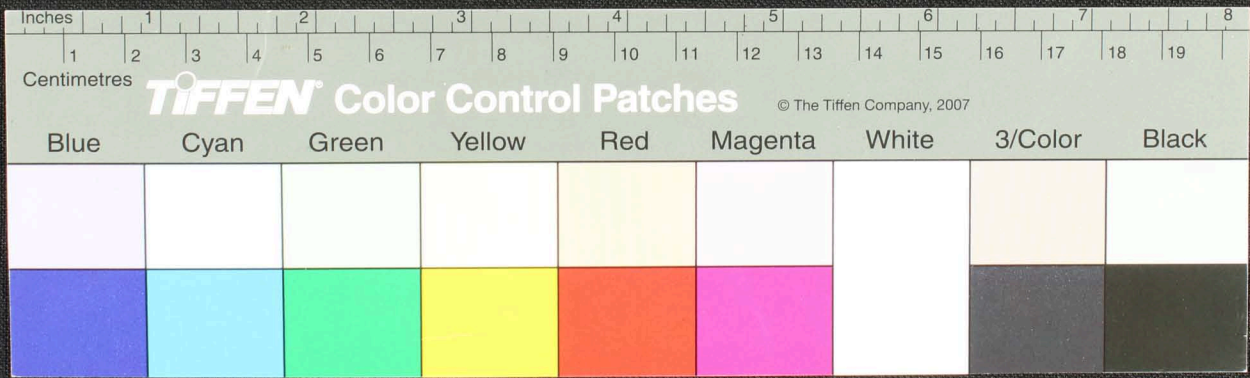
1- நடுநடு
 2- நடுநடு
 3- நடுநடு
 4- நடுநடு
 5- நடுநடு
 6- நடுநடு
 7- நடுநடு
 8- நடுநடு
 9- நடுநடு
 10- நடுநடு
 11- நடுநடு
 12- நடுநடு
 13- நடுநடு
 14- நடுநடு
 15- நடுநடு
 16- நடுநடு
 17- நடுநடு
 18- நடுநடு
 19- நடுநடு
 20- நடுநடு
 21- நடுநடு
 22- நடுநடு
 23- நடுநடு
 24- நடுநடு
 25- நடுநடு
 26- நடுநடு
 27- நடுநடு
 28- நடுநடு
 29- நடுநடு
 30- நடுநடு
 31- நடுநடு
 32- நடுநடு
 33- நடுநடு
 34- நடுநடு
 35- நடுநடு
 36- நடுநடு
 37- நடுநடு
 38- நடுநடு
 39- நடுநடு
 40- நடுநடு
 41- நடுநடு
 42- நடுநடு
 43- நடுநடு
 44- நடுநடு
 45- நடுநடு
 46- நடுநடு
 47- நடுநடு
 48- நடுநடு
 49- நடுநடு
 50- நடுநடு
 51- நடுநடு
 52- நடுநடு
 53- நடுநடு
 54- நடுநடு
 55- நடுநடு
 56- நடுநடு
 57- நடுநடு
 58- நடுநடு
 59- நடுநடு
 60- நடுநடு
 61- நடுநடு
 62- நடுநடு
 63- நடுநடு
 64- நடுநடு
 65- நடுநடு
 66- நடுநடு
 67- நடுநடு
 68- நடுநடு
 69- நடுநடு
 70- நடுநடு
 71- நடுநடு
 72- நடுநடு
 73- நடுநடு
 74- நடுநடு
 75- நடுநடு
 76- நடுநடு
 77- நடுநடு
 78- நடுநடு
 79- நடுநடு
 80- நடுநடு
 81- நடுநடு
 82- நடுநடு
 83- நடுநடு
 84- நடுநடு
 85- நடுநடு
 86- நடுநடு
 87- நடுநடு
 88- நடுநடு
 89- நடுநடு
 90- நடுநடு
 91- நடுநடு
 92- நடுநடு
 93- நடுநடு
 94- நடுநடு
 95- நடுநடு
 96- நடுநடு
 97- நடுநடு
 98- நடுநடு
 99- நடுநடு
 100- நடுநடு



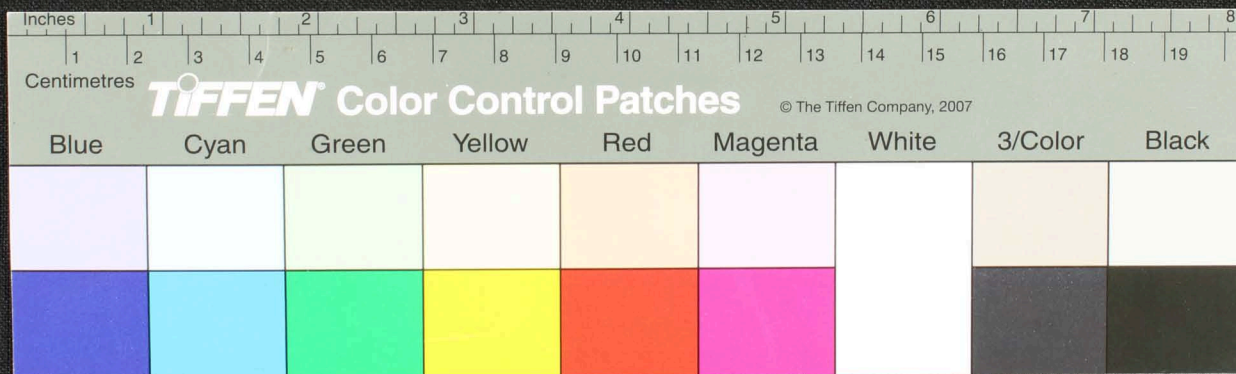
Handwritten Tamil script on a palm leaf manuscript. The text is arranged in approximately 10 horizontal lines across the length of the leaf. On the left side, there are vertical annotations: 'மே. 1871' and 'மே. 1872'. Two circular holes are visible, which were traditionally used for threading a cord to bind multiple leaves together.



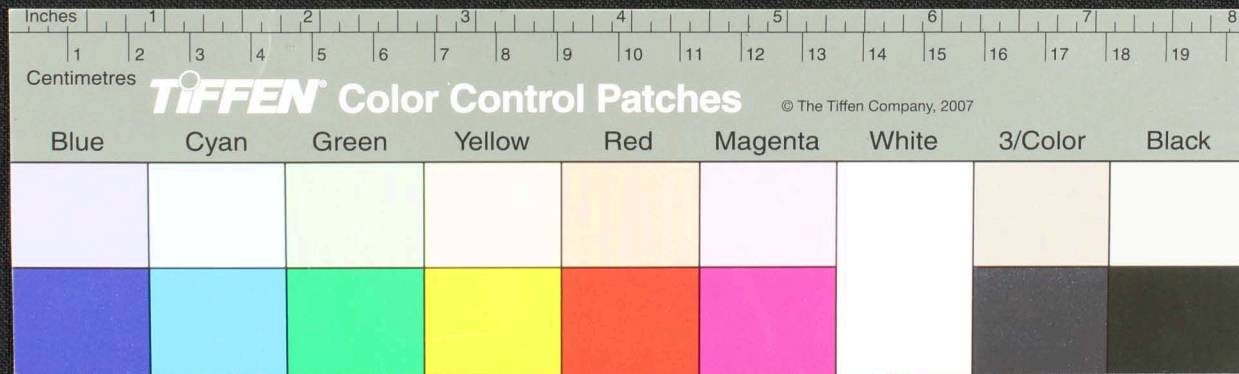
Handwritten text in Tamil script on a palm leaf manuscript. The text is arranged in approximately 12 horizontal lines. Two circular holes are visible, which were traditionally used for threading a cord to bind multiple leaves together. The script is finely etched into the surface of the dried leaf.



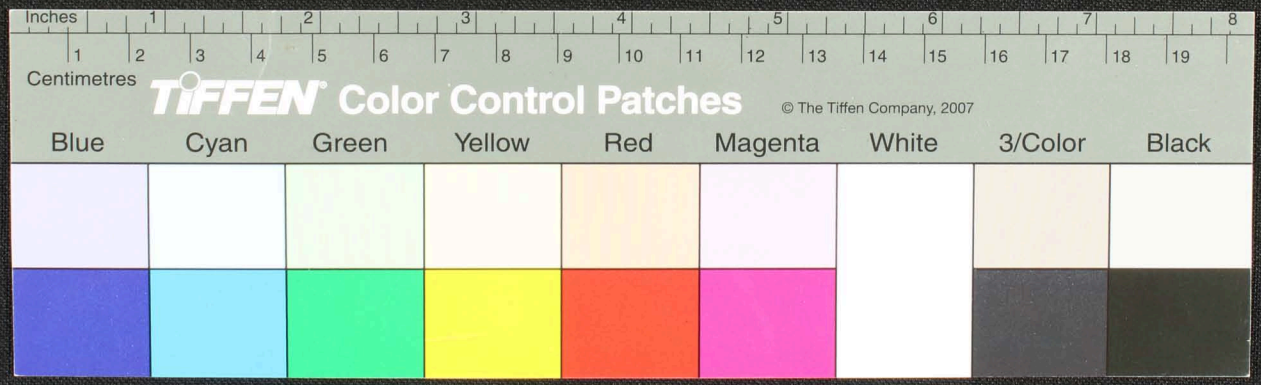
Handwritten Tamil script on a palm leaf manuscript. The text is arranged in approximately 12 horizontal lines. On the left side, there are two diagrams: the first is a small rectangular diagram with internal lines and a circled '1' below it; the second is a larger diagram of a rectangular object with internal components and a circled '2' below it. Two circular holes are visible on the leaf, one at approximately the 4-inch mark and another at the 16-inch mark.



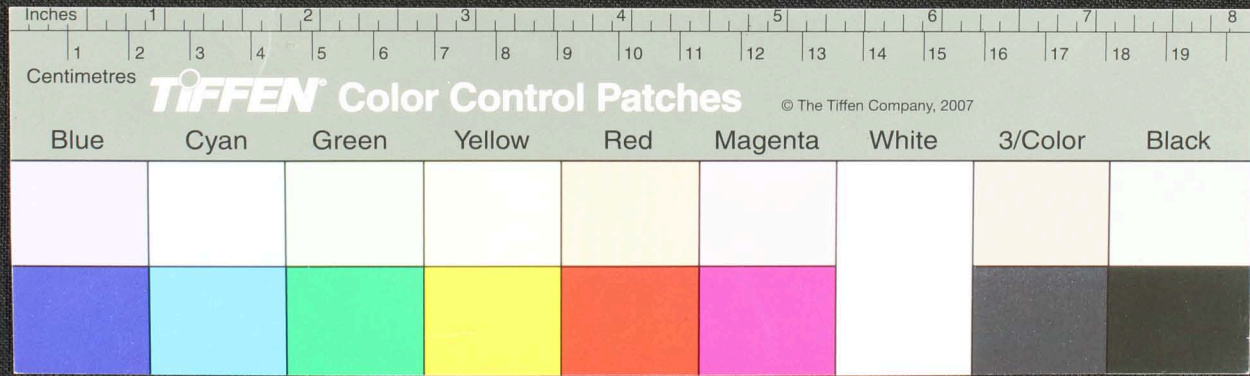
Handwritten text in Tamil script on a palm leaf manuscript. The text is arranged in approximately 12 horizontal lines across the length of the leaf. Two circular holes are visible, which were traditionally used for threading a cord to bind multiple leaves together into a book format.



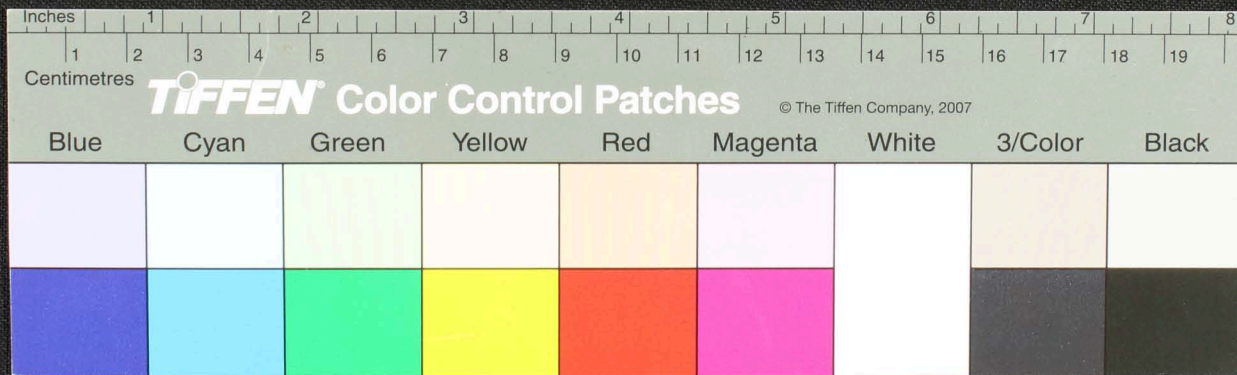
Handwritten Tamil script on a palm leaf manuscript. The text is arranged in approximately 10 horizontal lines across the length of the leaf. The script is finely etched into the surface of the dried leaf. There are two prominent circular holes, likely from a traditional string binding method. The leaf shows signs of age and wear, with some discoloration and slight fraying at the edges.

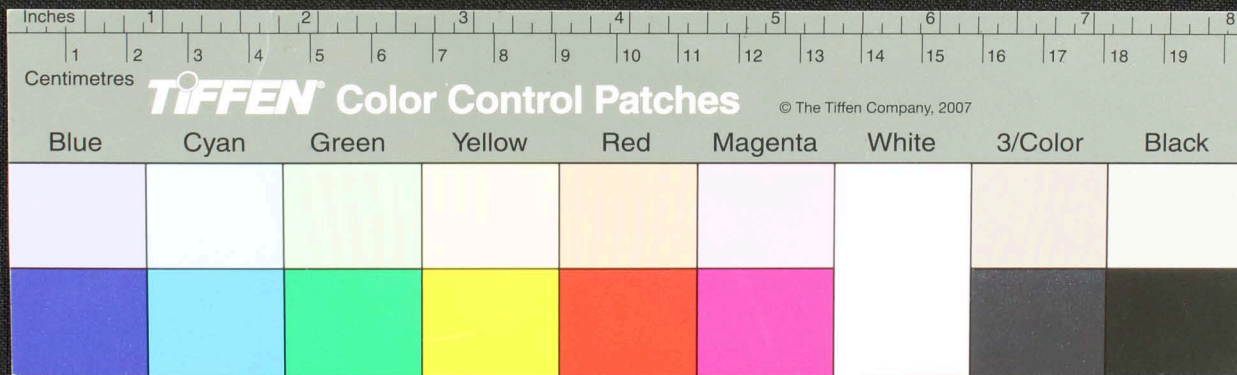
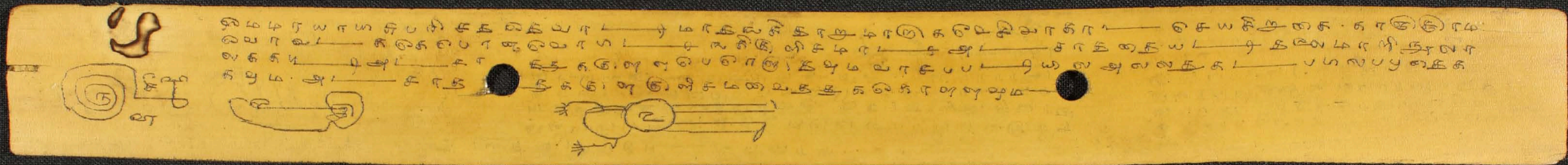


Handwritten text in Tamil script on a palm leaf manuscript. The text is arranged in approximately 10 horizontal lines across the length of the leaf. Two circular holes are visible, which were traditionally used for threading a cord to bind multiple leaves together into a book format.



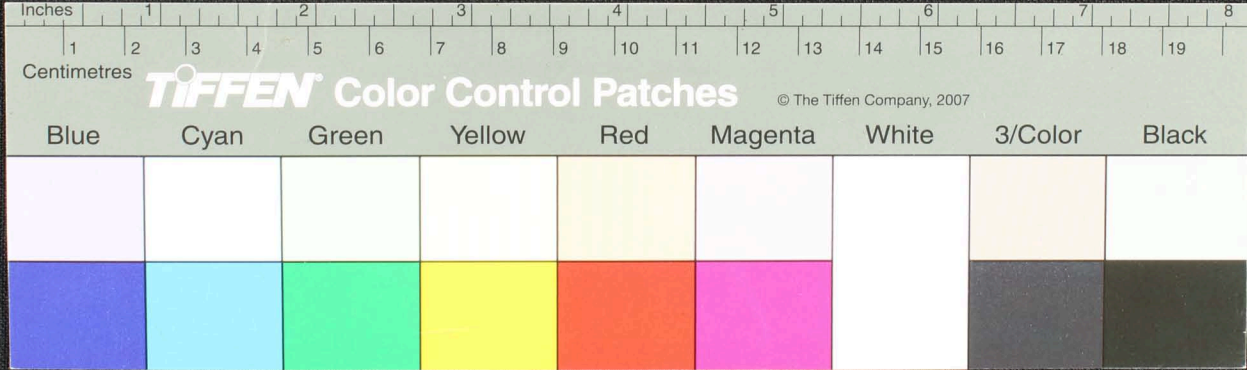
Handwritten Tamil script on a palm leaf manuscript. The text is arranged in approximately 10 horizontal lines across the length of the leaf. The script is a traditional form of the Tamil language, likely used for religious or philosophical purposes. There are two prominent circular holes along the length of the leaf, which were traditionally used for threading a cord to bind multiple leaves together into a book format.



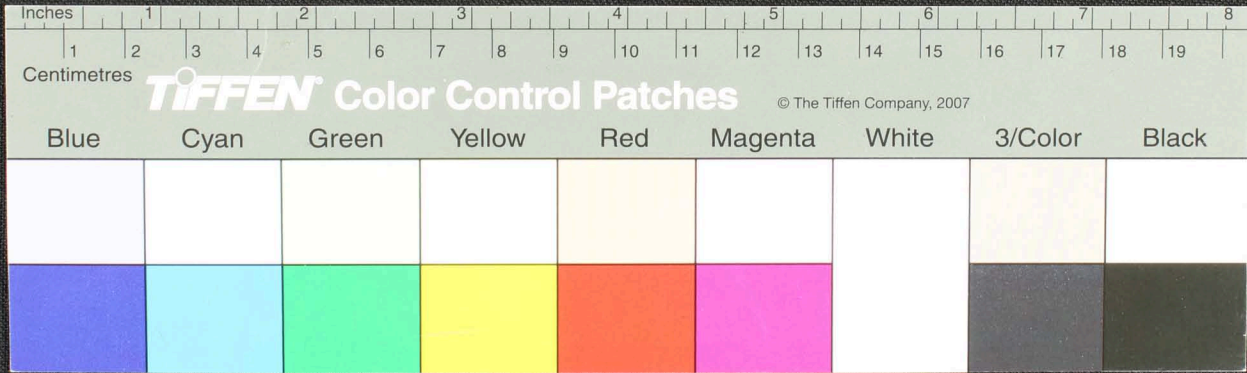


KW

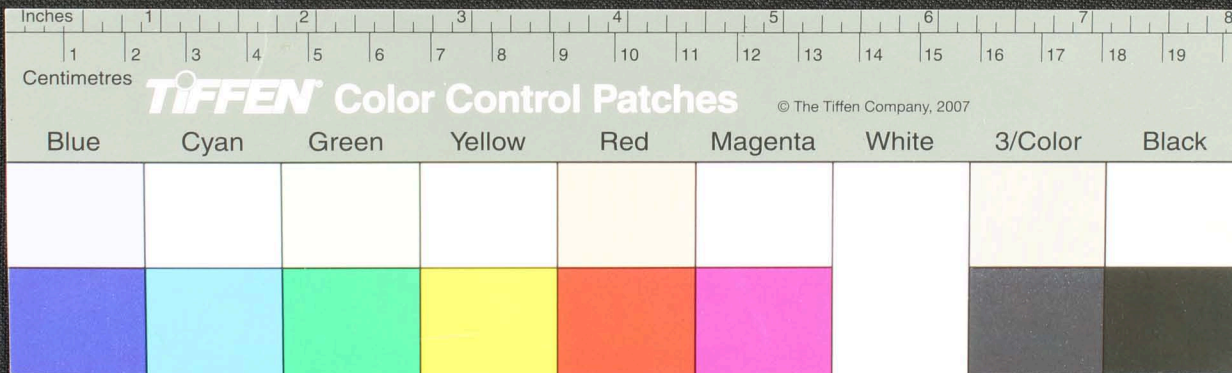
Handwritten Tamil script on a palm leaf manuscript. The text is arranged in approximately 10 horizontal lines across the length of the leaf. The script is a traditional form of the Tamil language, likely used for religious or philosophical purposes. Two circular holes are visible, which were traditionally used for threading a cord to bind multiple leaves together into a book.



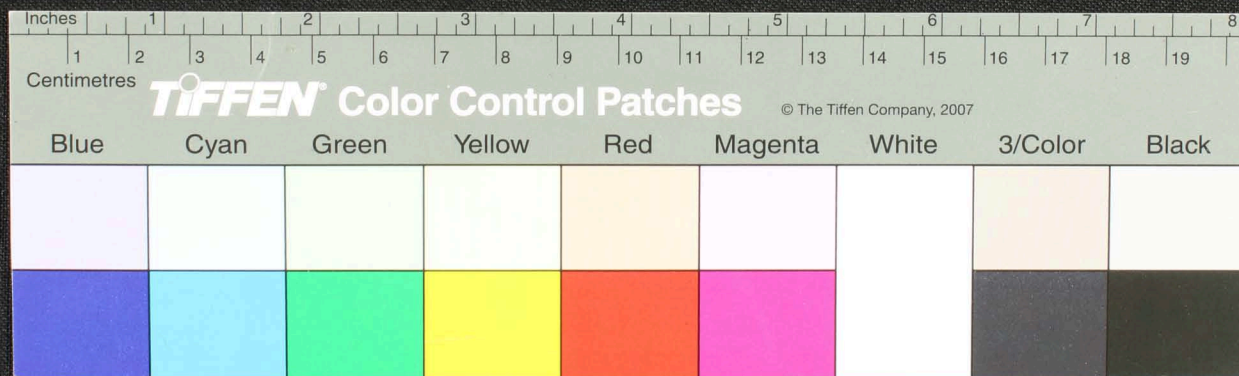
தொழில் (1) தொழிலாளர்களின் மனநிலை உயர்த்துவதற்கு நமது உயர் அதிகாரிகள் உடனடி நடவடிக்கை மேற்கொள்ளவேண்டும். மேலும் தொழிலாளர்களின் சலுகைகளைப் பெருக்கி அவர்களுக்கு உதவியளிப்பதற்கு உரிய நடவடிக்கைகளை மேற்கொள்ளவேண்டும். மேலும் தொழிலாளர்களின் சலுகைகளைப் பெருக்கி அவர்களுக்கு உதவியளிப்பதற்கு உரிய நடவடிக்கைகளை மேற்கொள்ளவேண்டும். மேலும் தொழிலாளர்களின் சலுகைகளைப் பெருக்கி அவர்களுக்கு உதவியளிப்பதற்கு உரிய நடவடிக்கைகளை மேற்கொள்ளவேண்டும்.



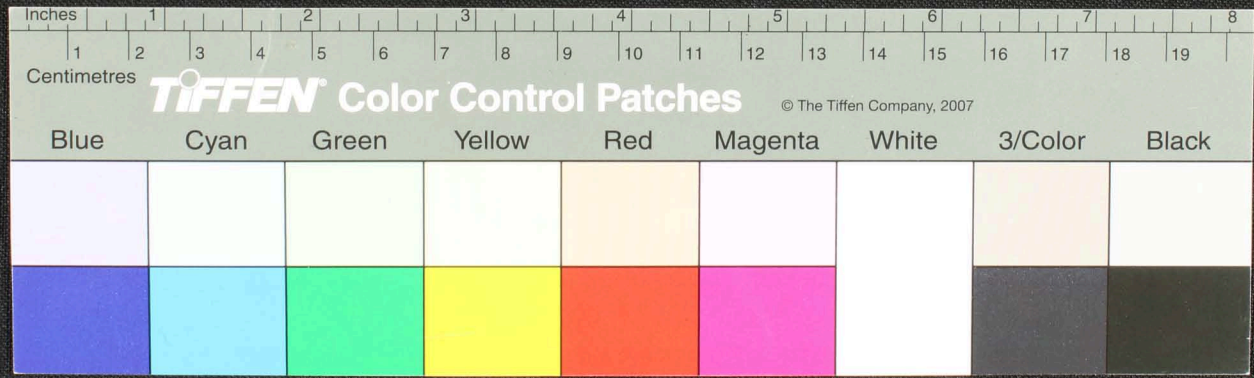
Handwritten text in an ancient script, likely Tamil, inscribed on a palm leaf. The text is arranged in approximately 12 horizontal lines across the length of the leaf. Two circular holes are visible, which were traditionally used for threading a cord to bind multiple leaves together into a book format. The script is finely etched into the surface of the dried leaf.



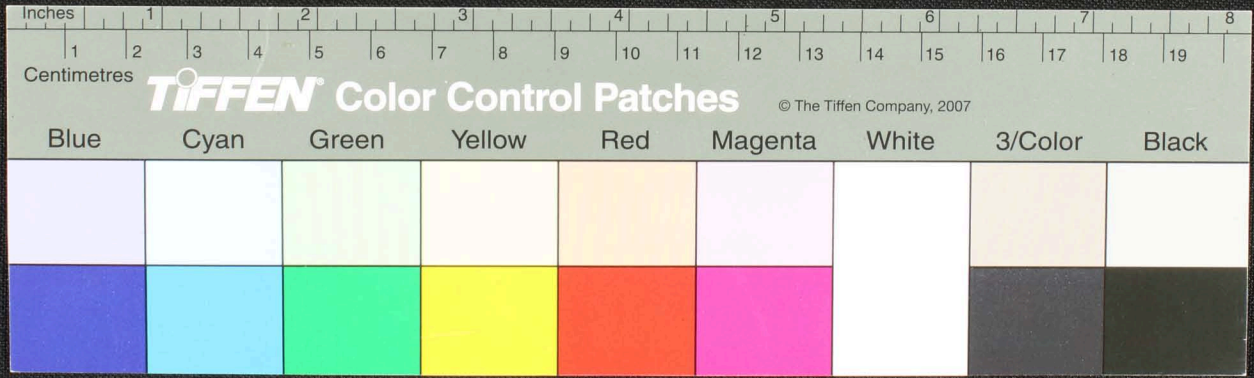
Handwritten text in an ancient script, likely Tamil, on a palm leaf manuscript. The text is arranged in approximately 12 horizontal lines across the length of the leaf. Two circular holes are visible, used for threading a cord to bind multiple leaves together. On the left side, there is a vertical column of text, possibly a title or a reference number, including the characters 'பு' and 'பு'.



Handwritten Tamil script on a palm leaf manuscript. The text is arranged in approximately 10 horizontal lines across the length of the leaf. Two circular holes are visible, which were traditionally used for threading a cord to bind multiple leaves together. The script is a form of the Tamil language, likely a historical or religious text.

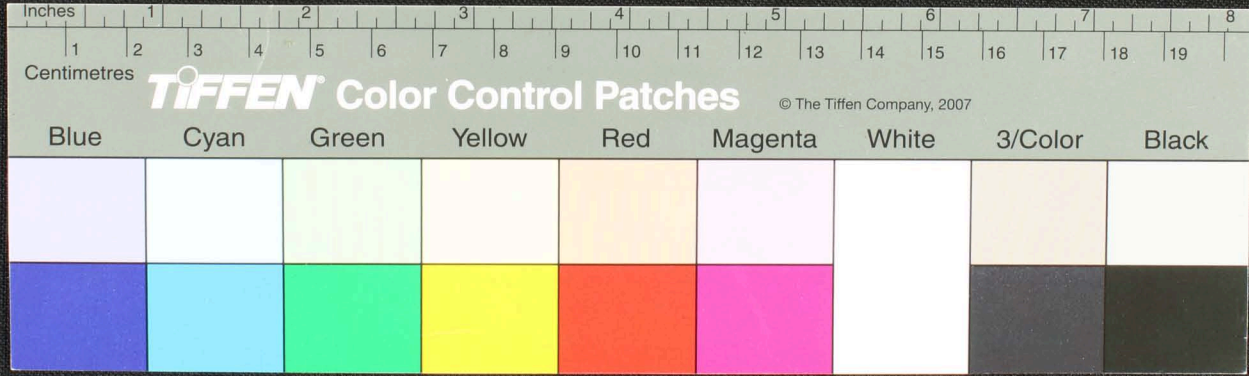


Handwritten Tamil script on a palm leaf manuscript. The text is arranged in approximately 10 horizontal lines. On the left side, there are several vertical annotations, including the number '3' and some characters. On the right side, there is a small circular diagram with a central point and lines extending to the perimeter, possibly representing a celestial or geometric concept. Two circular holes are visible on the leaf, used for binding multiple leaves together.

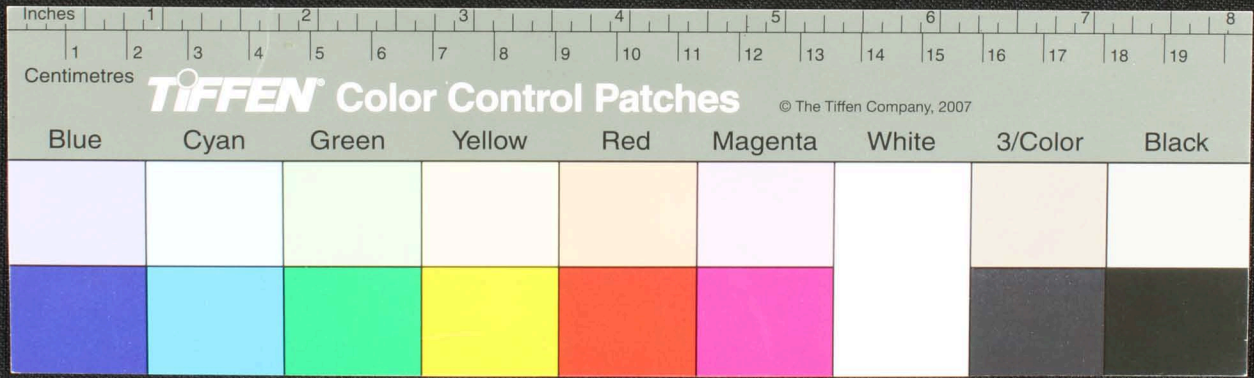


54

Handwritten text in Tamil script, likely a historical record or document. The text is arranged in approximately 10 horizontal lines across the length of the palm leaf. Two circular holes are visible, used for threading a cord to bind multiple leaves together.

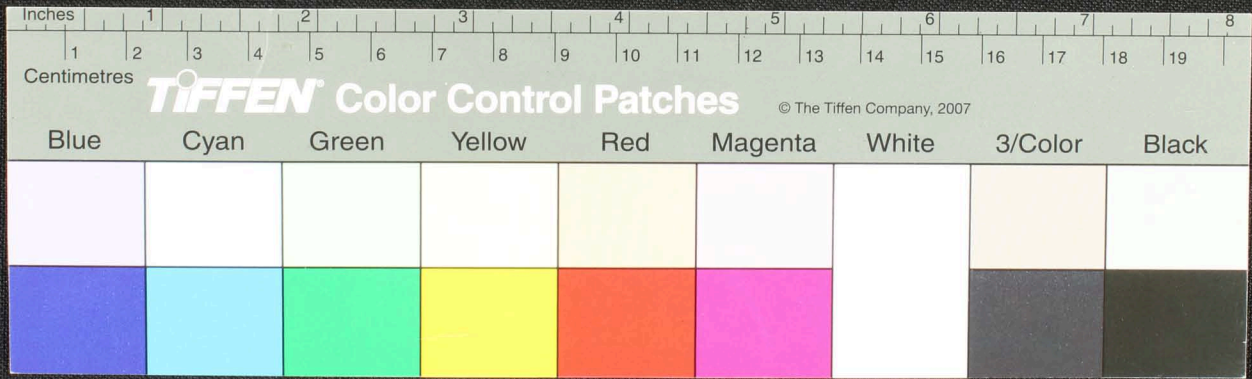


Handwritten Tamil script on a palm leaf manuscript. The text is arranged in approximately 10 horizontal lines across the length of the leaf. Two circular holes are visible, which were traditionally used for threading a cord to bind multiple leaves together into a book format. The script is finely etched into the surface of the dried leaf.

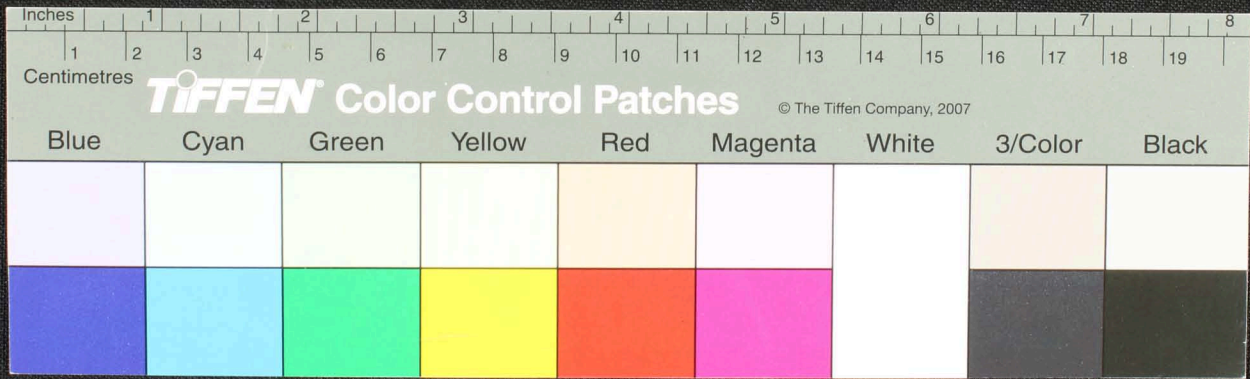


27 B

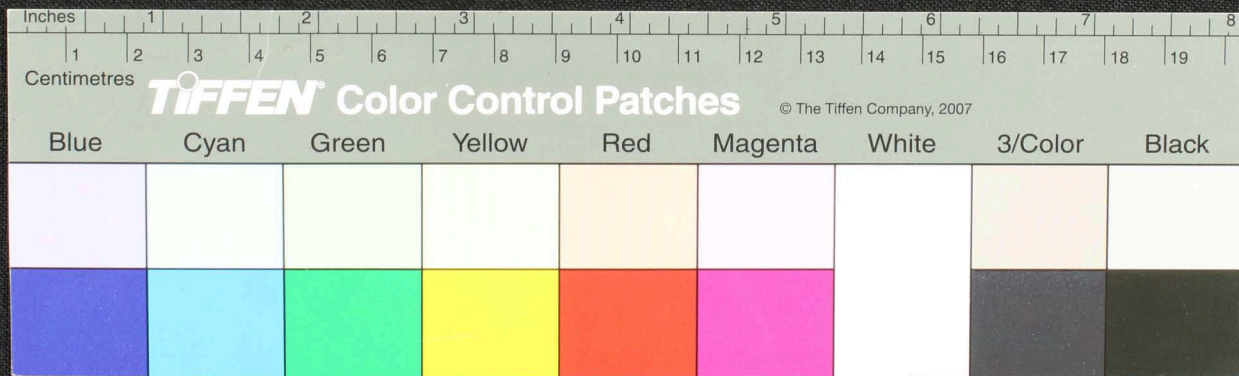
Handwritten text in Tamil script on a palm leaf manuscript strip. The text is arranged in approximately six horizontal lines across the length of the leaf. Two circular holes are visible, which were traditionally used for threading a cord to bind multiple leaves together into a book format.



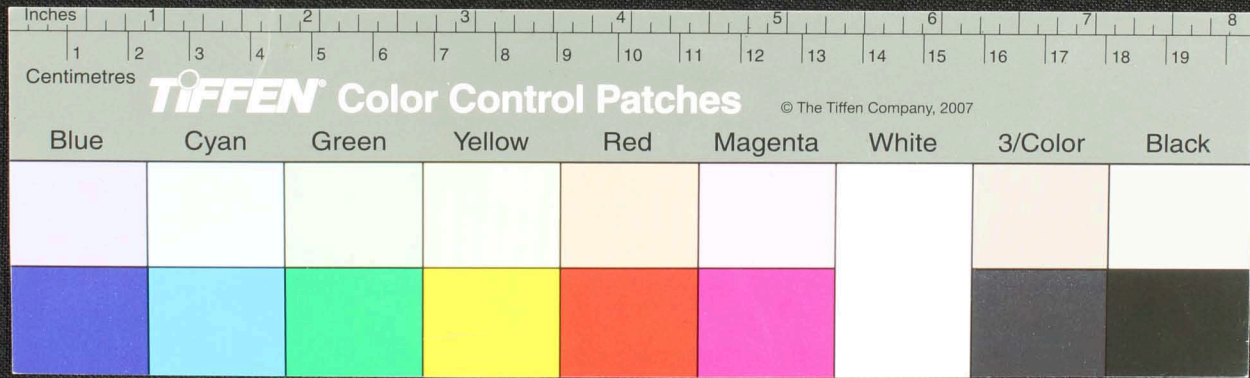
Handwritten text in Tamil script on a palm leaf manuscript. The text is arranged in approximately 12 horizontal lines across the length of the leaf. Two circular holes are visible, which were traditionally used for threading a cord to bind multiple leaves together into a book format.



Handwritten text in an ancient script, likely cuneiform, on a yellowish-brown tablet. The text is arranged in approximately 12 horizontal lines. Two circular holes are visible, used for binding multiple tablets together. The script is finely etched into the surface of the clay.



Handwritten text in an ancient script, likely Brahmi, on a palm leaf manuscript. The text is arranged in approximately 12 horizontal lines. On the far left, there is a vertical inscription of the number '5'. Two circular holes are visible along the length of the leaf, used for threading a cord to bind multiple leaves together.



Handwritten Tamil script on a palm leaf manuscript strip. The text is arranged in three horizontal lines, with two circular holes visible for binding. The script is finely etched into the surface of the dried leaf.

