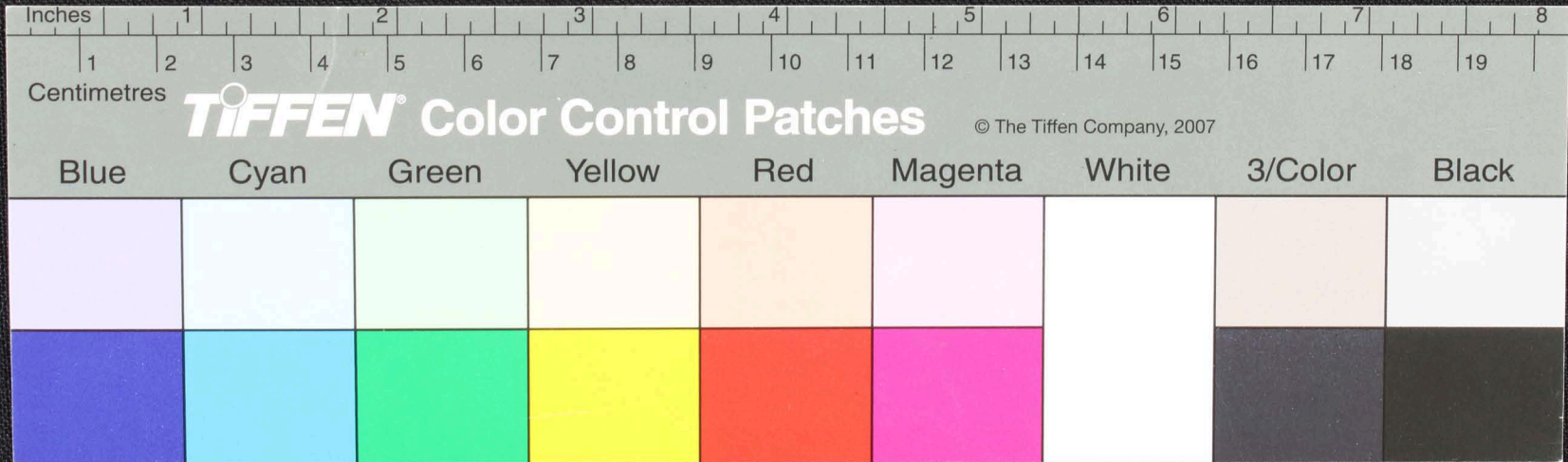
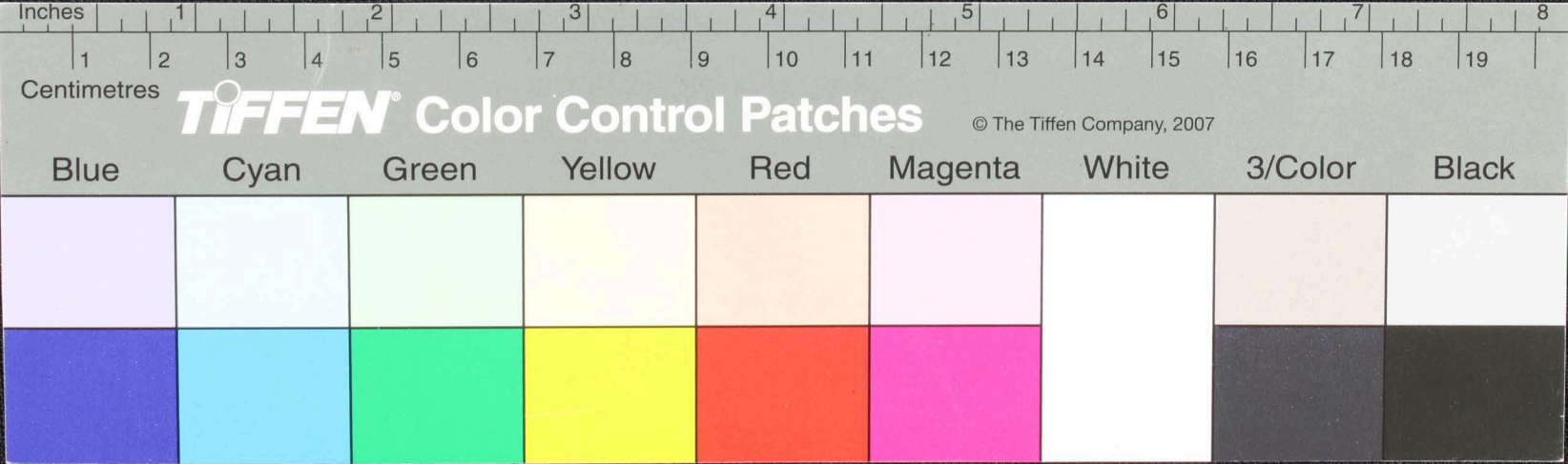
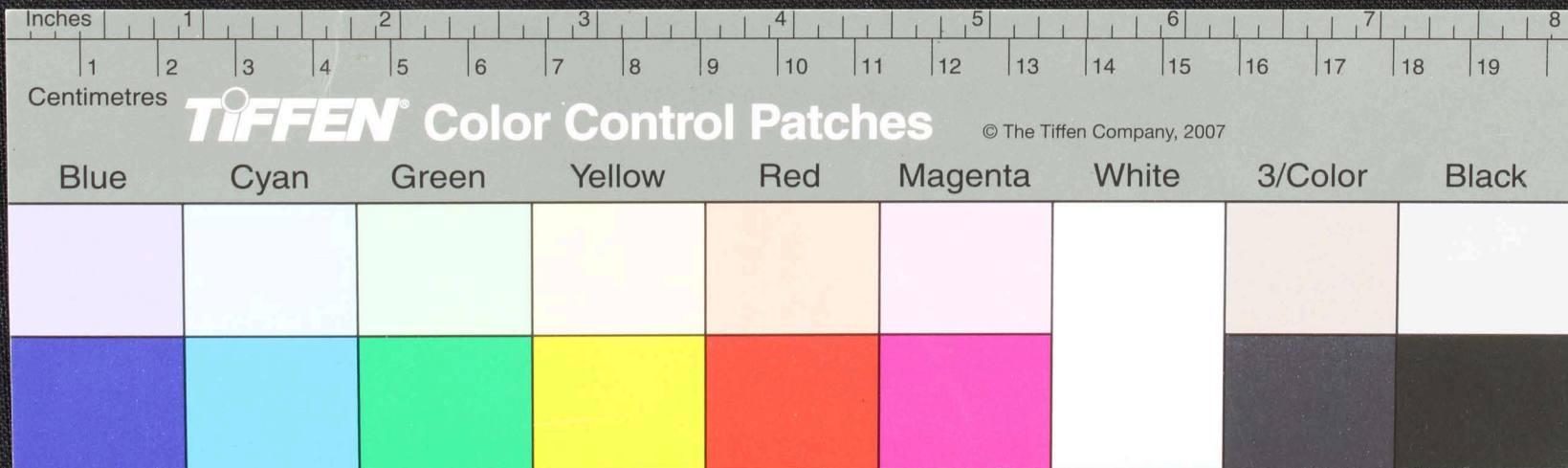


Handwritten Tamil script on a palm leaf manuscript. The text is arranged in approximately 10 horizontal lines across the length of the leaf. The script is a traditional form of the Tamil language, likely used for religious or philosophical purposes. There is a small dark hole or mark on the leaf near the center.

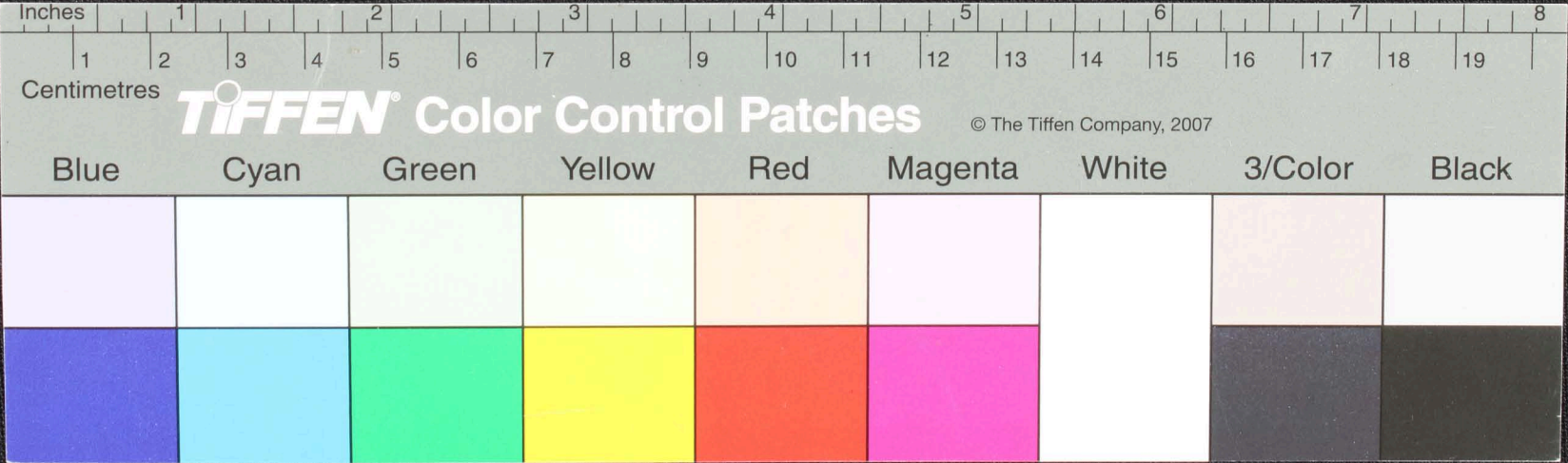


மலையாள மொழி எழுத்துக்கள் மூலக்கோணம் மூலக்கோணம் மூலக்கோணம்
 மலையாள மொழி எழுத்துக்கள் மூலக்கோணம் மூலக்கோணம் மூலக்கோணம்
 மலையாள மொழி எழுத்துக்கள் மூலக்கோணம் மூலக்கோணம் மூலக்கோணம்
 மலையாள மொழி எழுத்துக்கள் மூலக்கோணம் மூலக்கோணம் மூலக்கோணம்
 மலையாள மொழி எழுத்துக்கள் மூலக்கோணம் மூலக்கோணம் மூலக்கோணம்

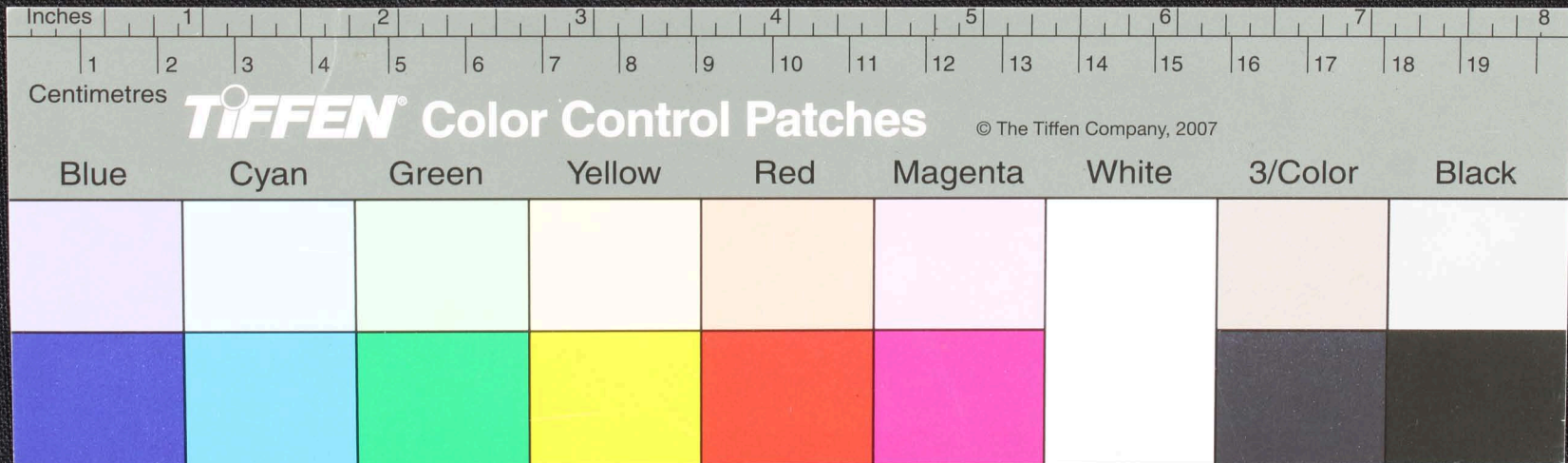




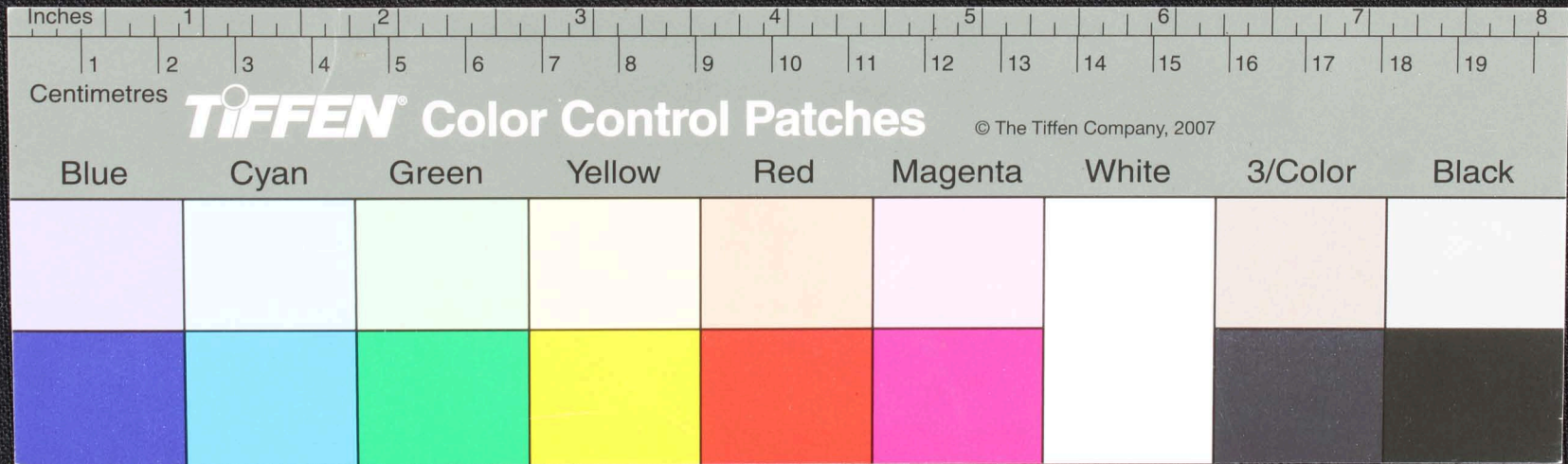
Handwritten Tamil script on a palm leaf. The text is arranged in approximately 12 horizontal lines. On the left side, there are two distinct vertical columns of text. The main body of the leaf contains a continuous line of script. There is a small, dark circular hole or indentation in the center of the leaf, approximately one-third of the way from the left end.



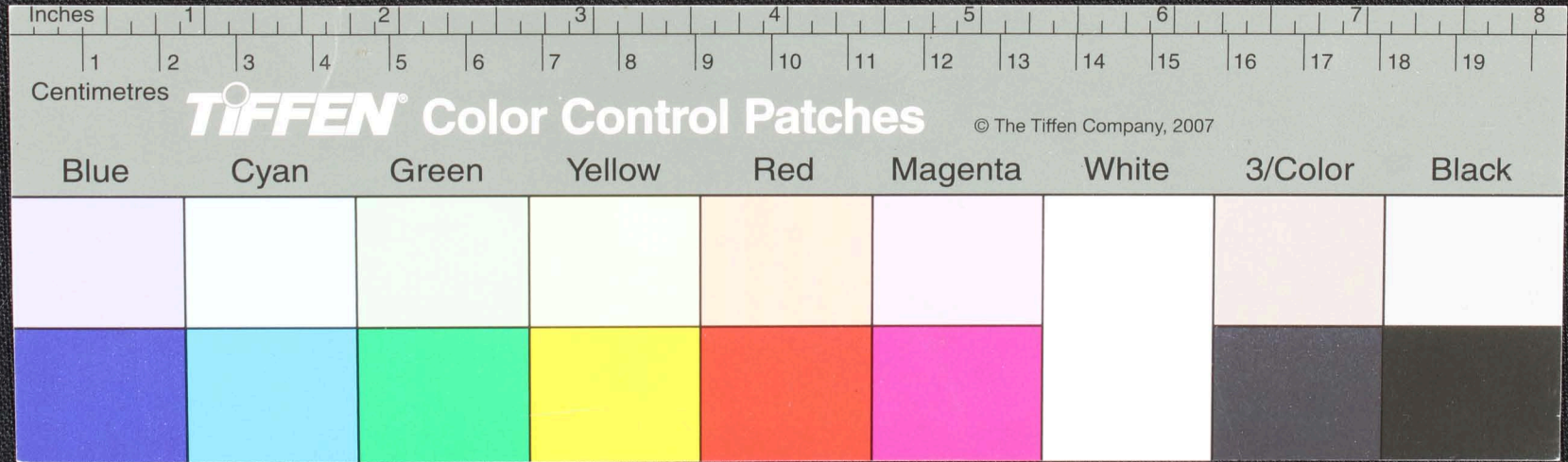
675
 யானே மலர் மலர் மலர் மலர் துருகுநெரி னை லாந் தான்தேயல
 உய்யுமிந் திநகடு உறுகத ம் மயங்கு வையுள் ஒழுமுமவெய
 தநல் தாமாவா ச த தானது திநி அய் தபேதடு லாயா ஆசுவலந் தி
 தகந் துதேவந் தகலிந் தகலிநக கா உறு (6) உறு (6) உறு (6)
 தகடு துய்யுலாகா வையுள்
 லாந் தான்தேயல
 லாந்



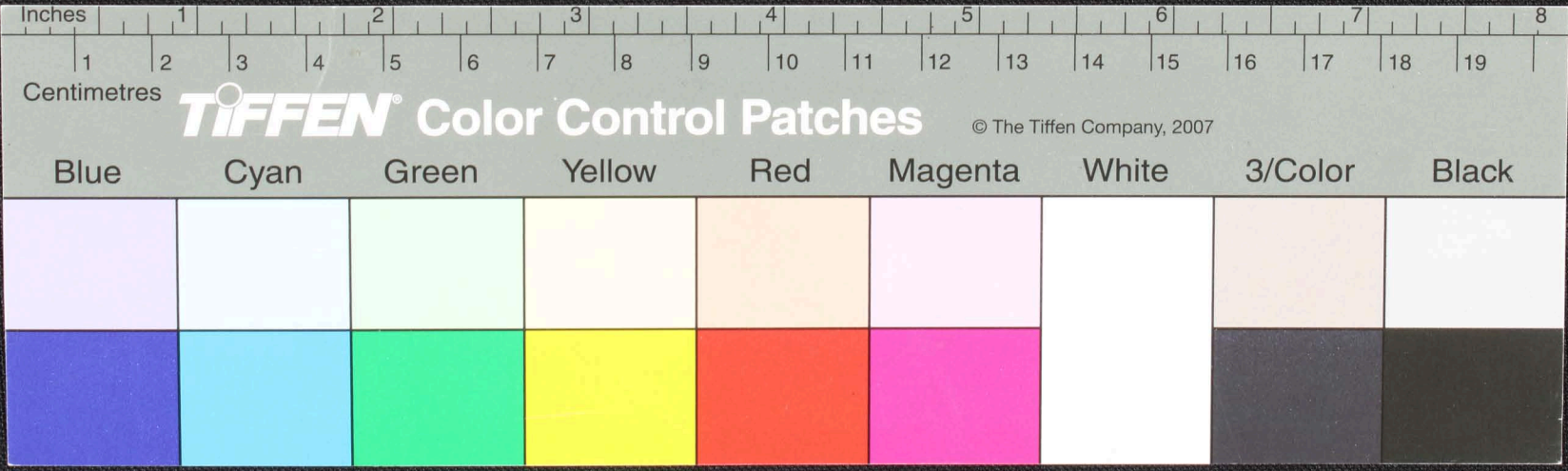
Handwritten text in Tamil script on a palm leaf manuscript. The text is arranged in approximately 10 horizontal lines. The script is densely packed and includes various characters and symbols, including some that appear to be decorative or specific to the dialect. A small dark circular mark is visible on the leaf near the center.



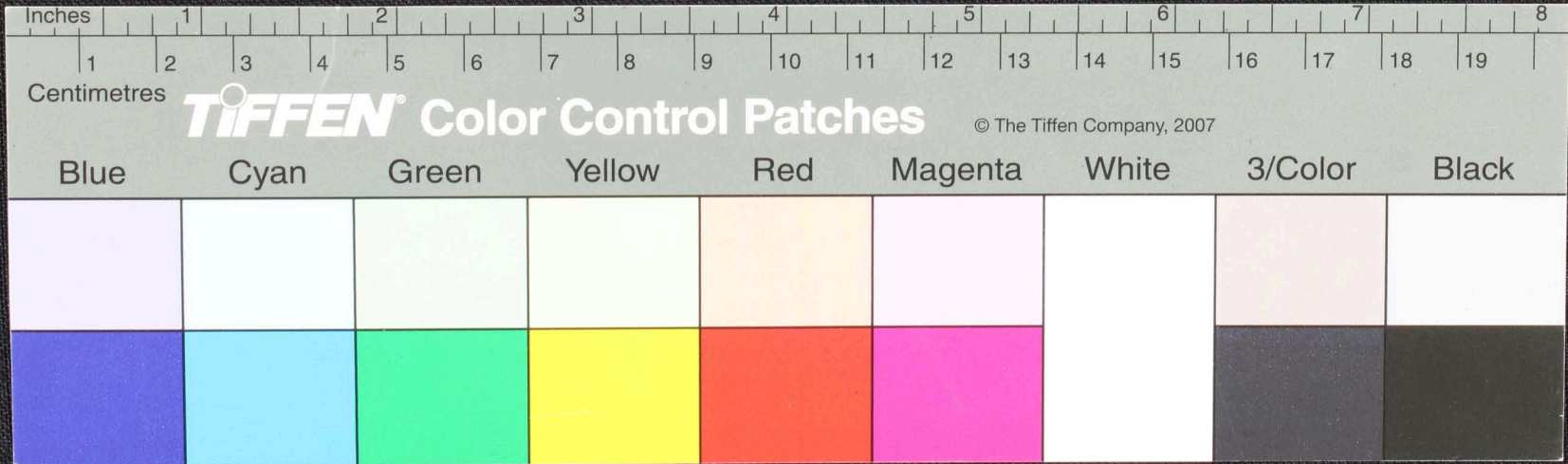
Handwritten text in Tamil script on a palm leaf manuscript. The text is arranged in approximately 10 horizontal lines. On the left side, there is a vertical inscription: 'வெள்ளசாலை' (Vellansalai) and 'சென்னை' (Chennai). The main body of text contains several lines of prose, including the words 'சும' (Soma), 'மொ' (Mora), and 'அய்யா' (Ayya). There is a small circular hole in the leaf, likely from a traditional binding method.



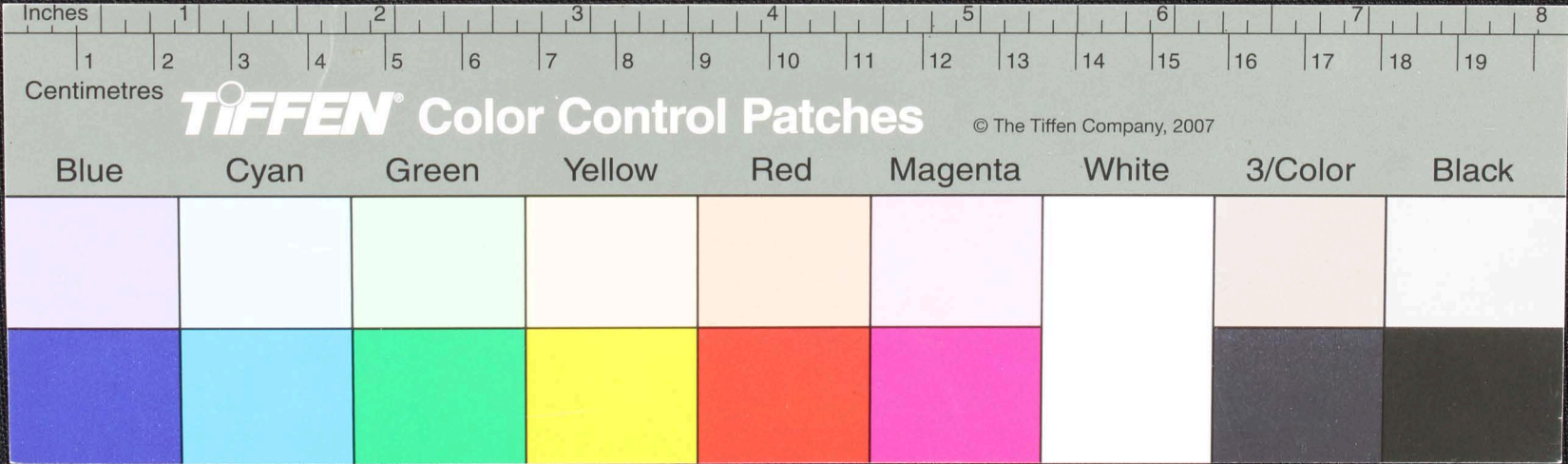
மொழி மொழி மொழி மொழி மொழி மொழி - மொழி மொழி மொழி
 அறிஞர் அறிஞர் அறிஞர் அறிஞர் அறிஞர் அறிஞர் - அறிஞர் அறிஞர் அறிஞர்
 மொழி மொழி மொழி மொழி மொழி மொழி - மொழி மொழி மொழி மொழி மொழி
 மொழி மொழி மொழி மொழி மொழி மொழி - மொழி மொழி மொழி மொழி மொழி
 மொழி மொழி மொழி மொழி மொழி மொழி - மொழி மொழி மொழி மொழி மொழி



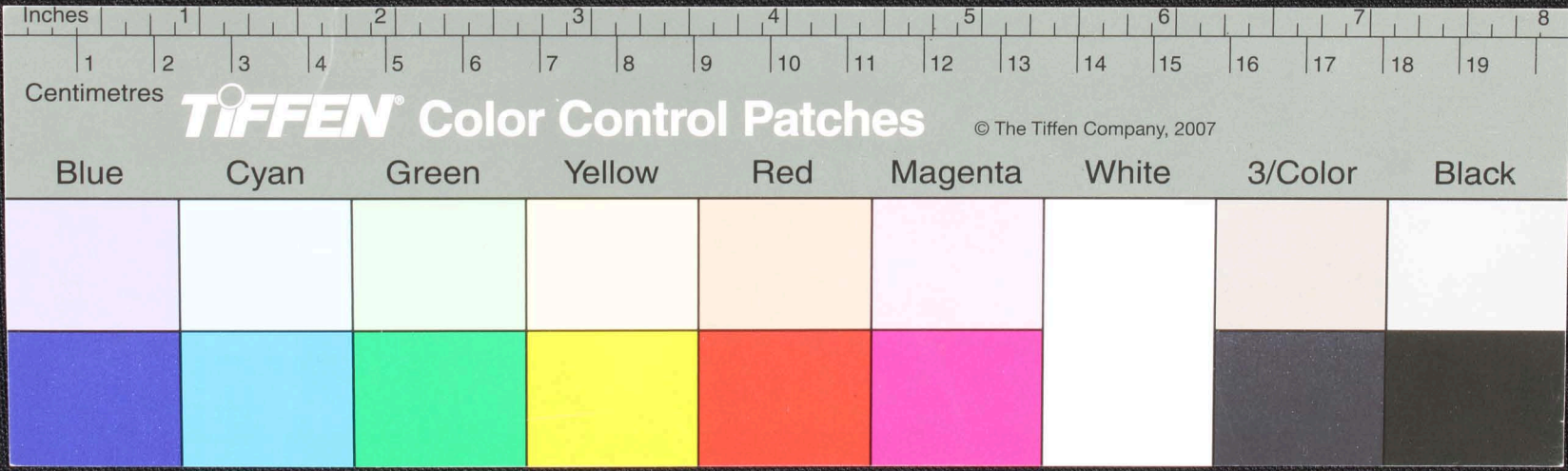
Handwritten text in Tamil script on a palm leaf manuscript. The text is arranged in approximately five horizontal lines. The first line on the left contains the characters 'கி. சி. கி. சி. கி. சி. கி. சி.' (Kishikishikishiki), which likely serves as a date or identifier. The main body of text contains several lines of prose, including phrases such as 'மேலும்...', 'யா...', and '...மேலும்...', which are typical of traditional Tamil literary or religious texts. The leaf shows signs of age, with some darkening and wear, particularly a large dark spot near the center.



Handwritten Tamil script on a palm leaf manuscript. The text is arranged in approximately 10 horizontal lines across the length of the leaf. The script is a traditional form of the Tamil language, likely used for religious or philosophical purposes. The leaf shows signs of age and wear, with a small dark spot near the center.

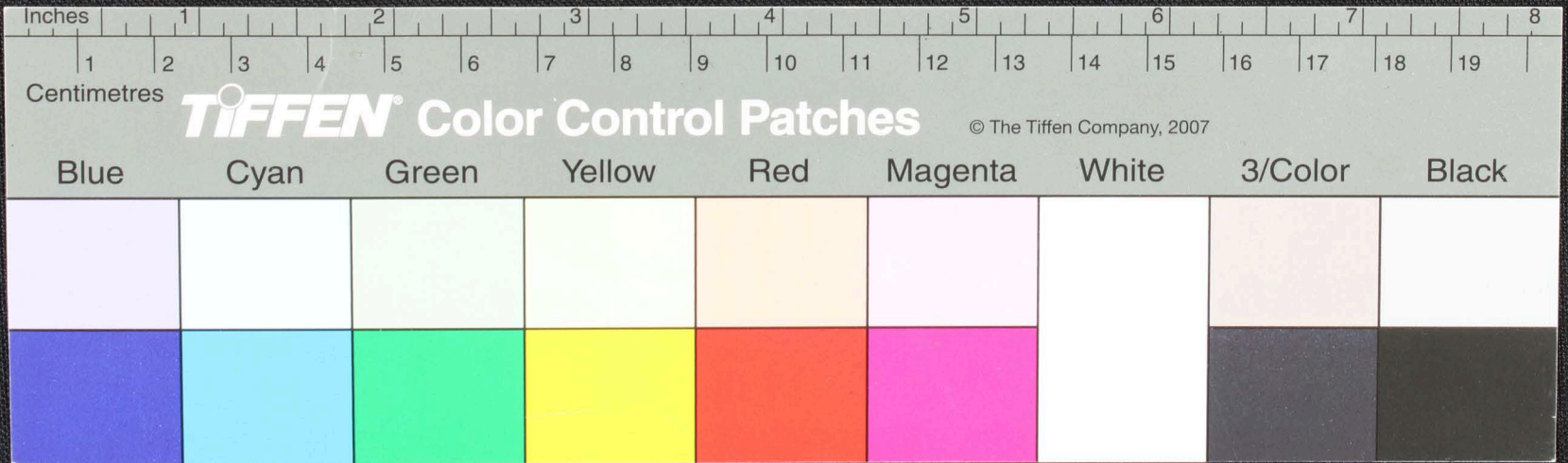


Handwritten Tamil script on a palm leaf manuscript. The text is arranged in approximately 10 horizontal lines across the length of the leaf. The script is a traditional form of the Tamil language. There is a prominent dark circular hole or mark in the center of the leaf, roughly between the 3 and 4 inch marks on the ruler below.

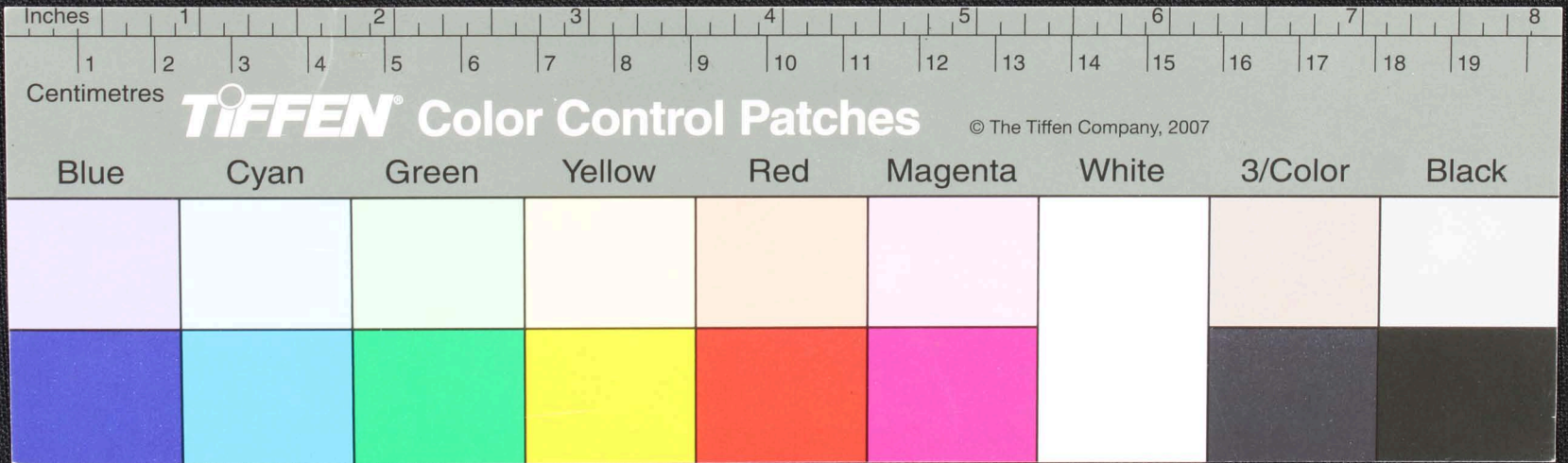


சூழலியல்
 அசையல்
 ம பா - 686

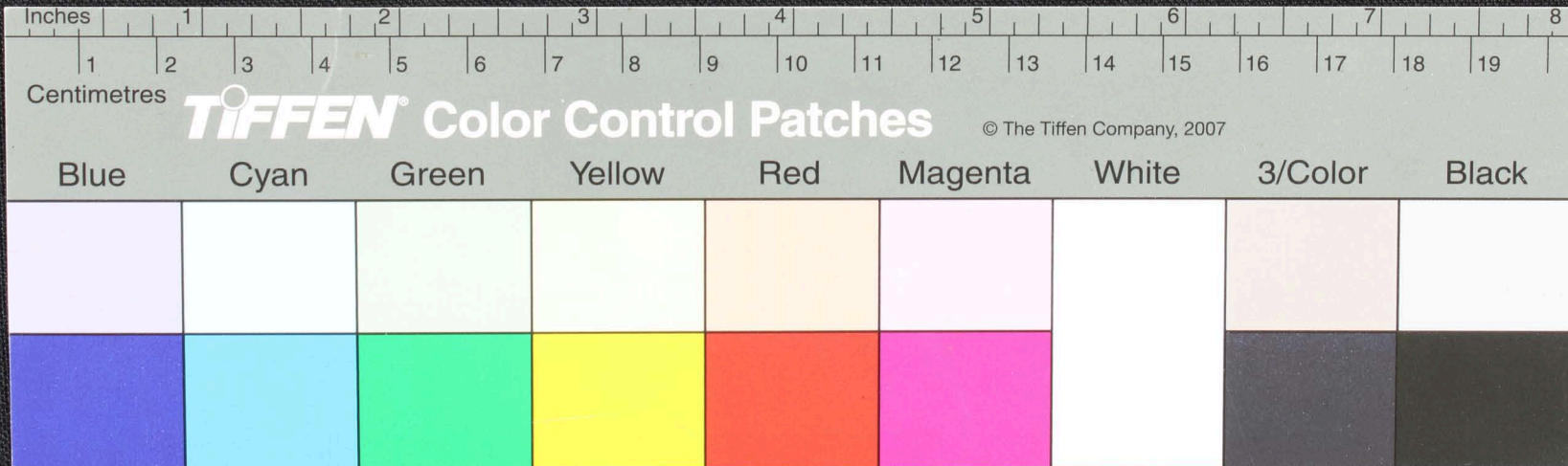
சூழலியல் அசையல் ம பா - 686
 உயர்நீர்நிலை அசையல் ம பா - 686
 உயர்நீர்நிலை அசையல் ம பா - 686
 உயர்நீர்நிலை அசையல் ம பா - 686
 உயர்நீர்நிலை அசையல் ம பா - 686
 உயர்நீர்நிலை அசையல் ம பா - 686
 உயர்நீர்நிலை அசையல் ம பா - 686
 உயர்நீர்நிலை அசையல் ம பா - 686
 உயர்நீர்நிலை அசையல் ம பா - 686
 உயர்நீர்நிலை அசையல் ம பா - 686



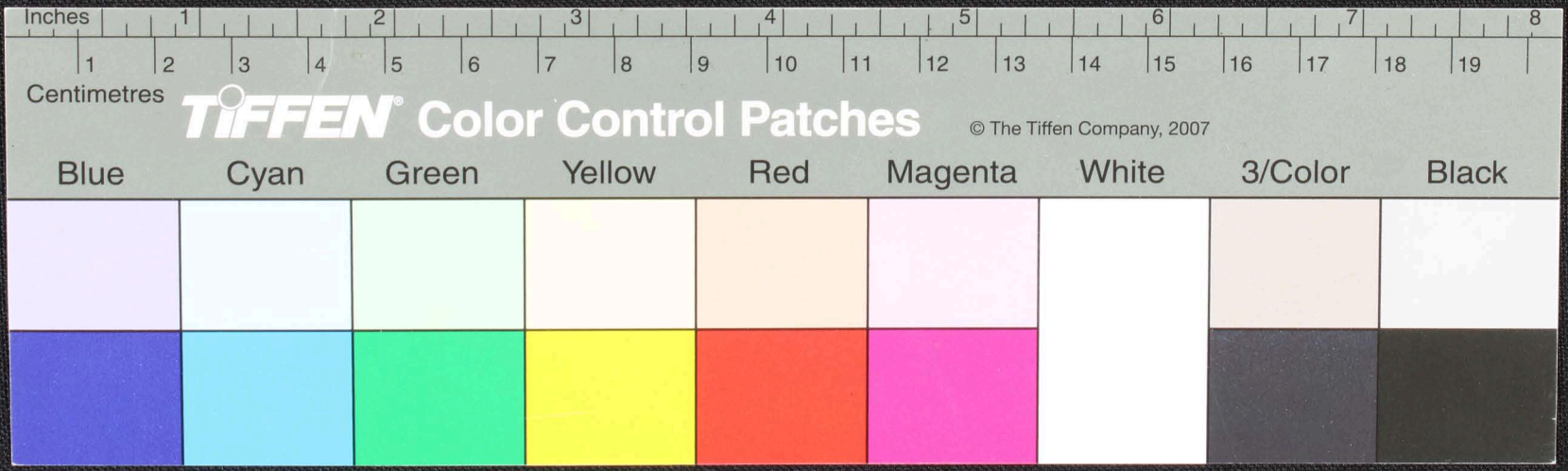
இவ்வூர் அகாலம் கிருஷ்ணசாமிநாதர் ஆடம்பரம் பாரம்பரியம்
 யுகியகிருஷ்ணசாமிநாதர் ஆடம்பரம் பாரம்பரியம்
 பிள்ளை சாமியாதிபதி ஆடம்பரம் உத்தமசூரியசாமிநாதர்
 விரிசூரியசாமிநாதர் ஆடம்பரம் பாரம்பரியம் ஆடம்பரம்
 ஆடம்பரம் பாரம்பரியம் ஆடம்பரம் பாரம்பரியம்

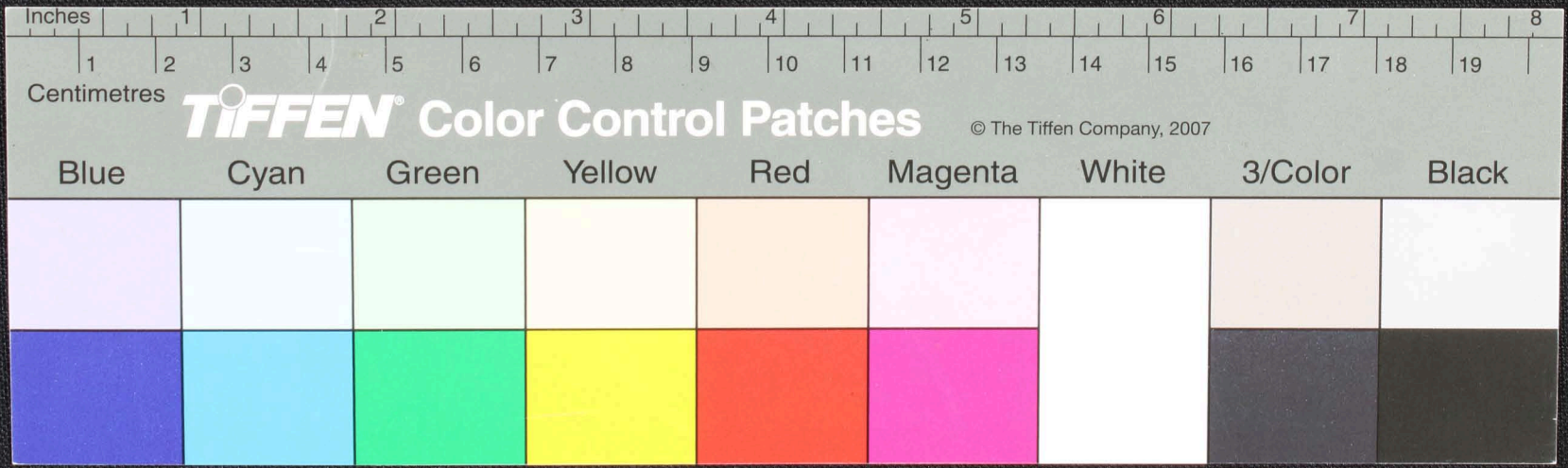
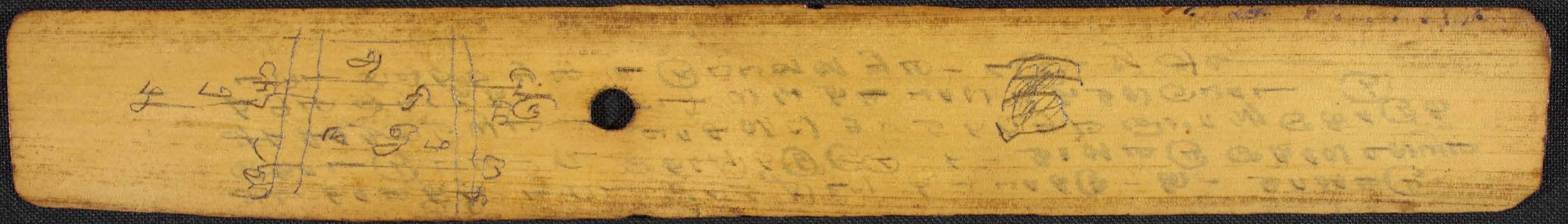


Handwritten Tamil script on a palm leaf manuscript. The text is arranged in approximately four horizontal lines. The script is finely etched into the surface of the dried leaf. The first line contains the most text, followed by three lines of varying lengths. The characters are in a traditional Tamil font, and the overall appearance is that of an ancient or historical document.

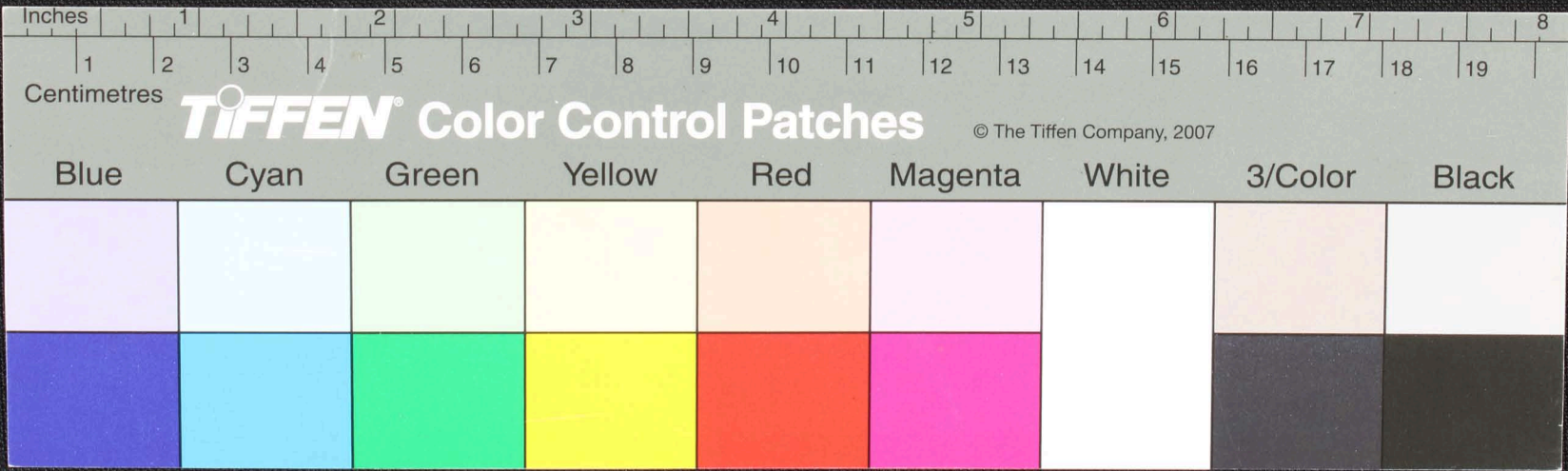


Handwritten Tamil script on a palm leaf manuscript. The text is arranged in several lines across the length of the leaf. On the left side, there is a small diagram consisting of a circle with lines extending from it, possibly representing a celestial or geometric diagram. A small hole is visible in the center of the leaf, which is a traditional feature for threading a cord to bind multiple leaves together.

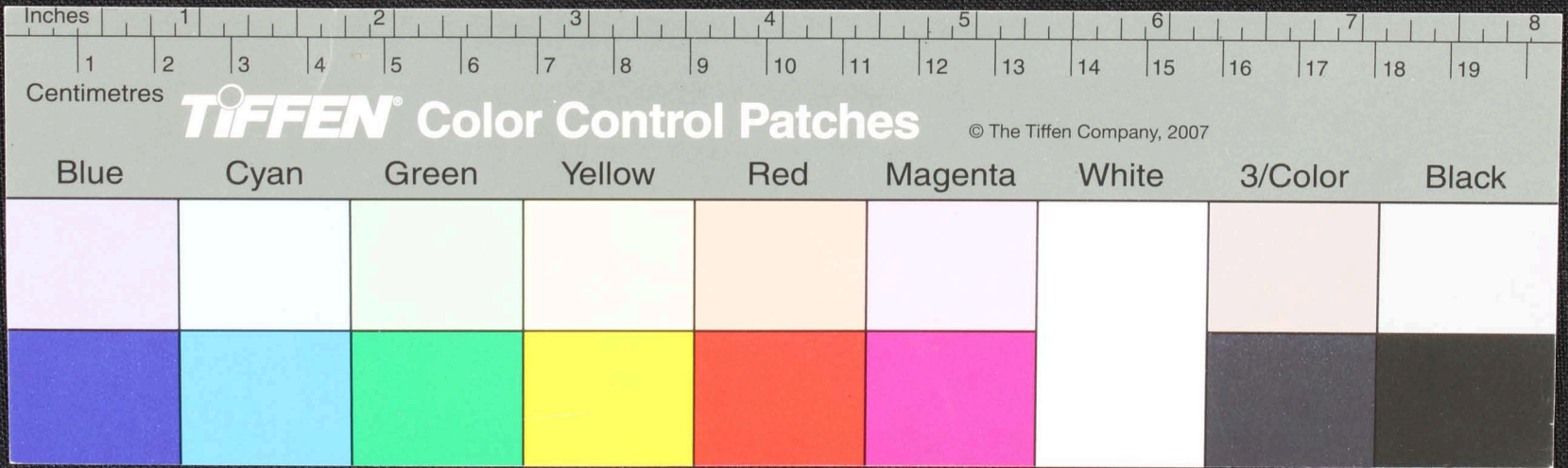




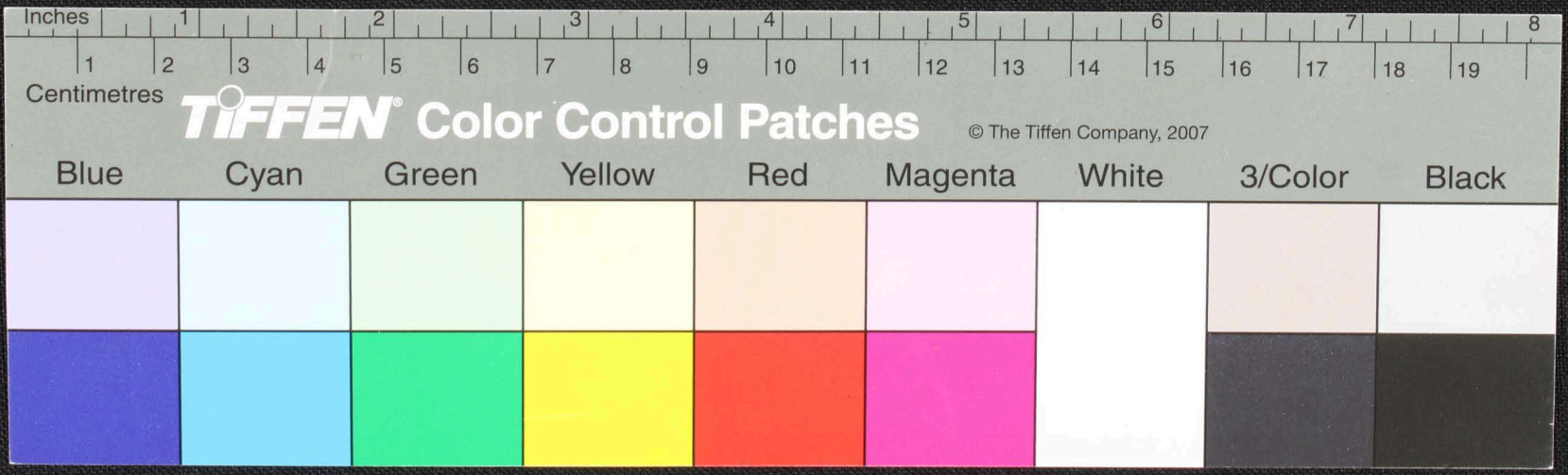
Handwritten text in Tamil script on a palm leaf manuscript. The text is arranged in approximately 10 horizontal lines. A significant portion of the leaf, roughly between the 3 and 4 inch marks, is missing, creating a large dark gap. The remaining text is written in a cursive style characteristic of traditional Tamil manuscripts.

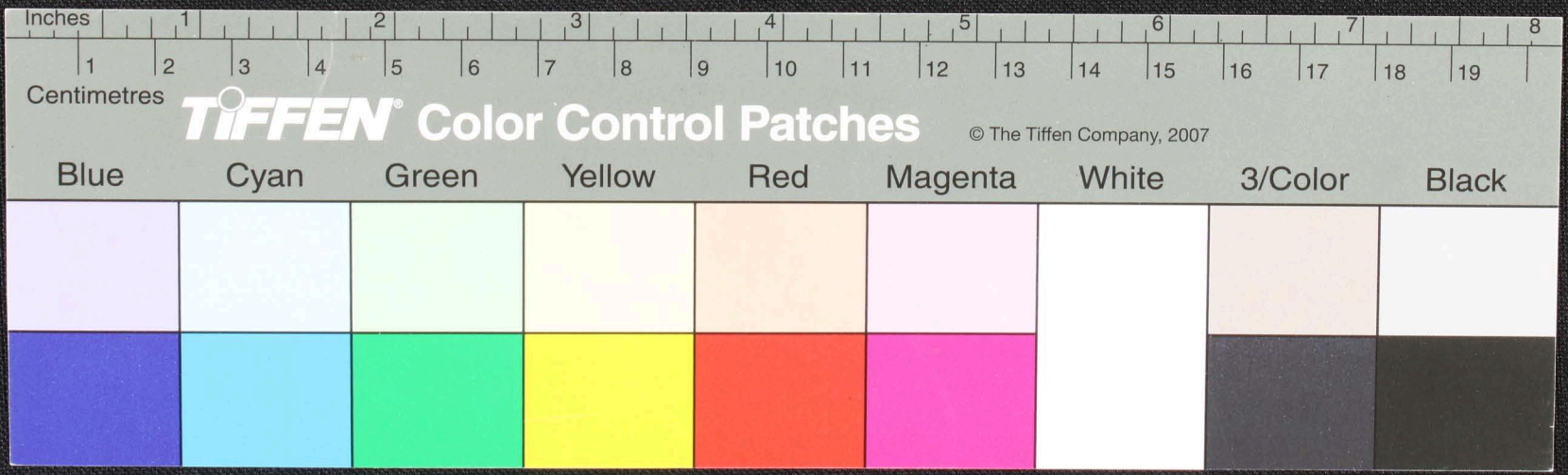


1109 10-
 கருவியுடைய சிவனின் மருமகன் உயர்க்கு திருவிவரமாய்க் கையியல் உருவாக
 சிவனயுடைய சிவனின் மருமகன் உயர்க்கு திருவிவரமாய்க் கையியல் உருவாக
 (கருவியுடைய சிவனின் மருமகன் உயர்க்கு திருவிவரமாய்க் கையியல் உருவாக)
 யுடைய சிவனின் மருமகன் உயர்க்கு திருவிவரமாய்க் கையியல் உருவாக
 கருவியுடைய சிவனின் மருமகன் உயர்க்கு திருவிவரமாய்க் கையியல் உருவாக
 திருவிவரமாய்க் கையியல் உருவாக



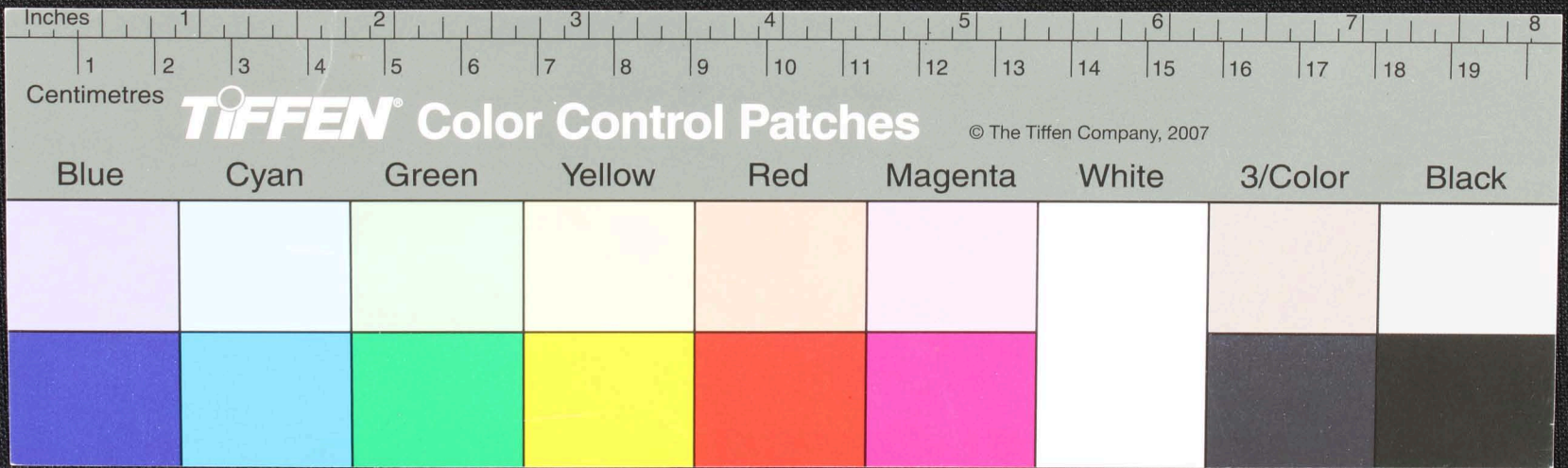
Handwritten Tamil script on a palm leaf manuscript. The text is arranged in approximately three horizontal lines. A small circular hole is visible in the center of the leaf, used for threading a cord to bind multiple leaves together. The script is dark and appears to be a traditional form of Tamil.



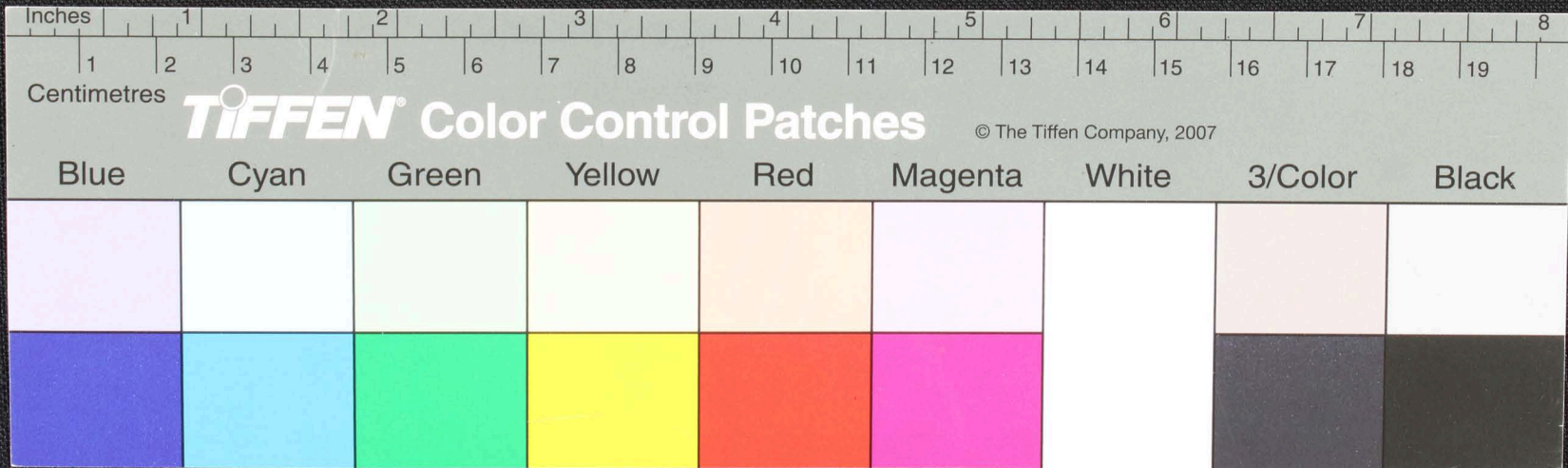


| Blue | Cyan | Green | Yellow | Red | Magenta | White | 3/Color | Black |
|------|------|-------|--------|-----|---------|-------|---------|-------|
| | | | | | | | | |
| | | | | | | | | |

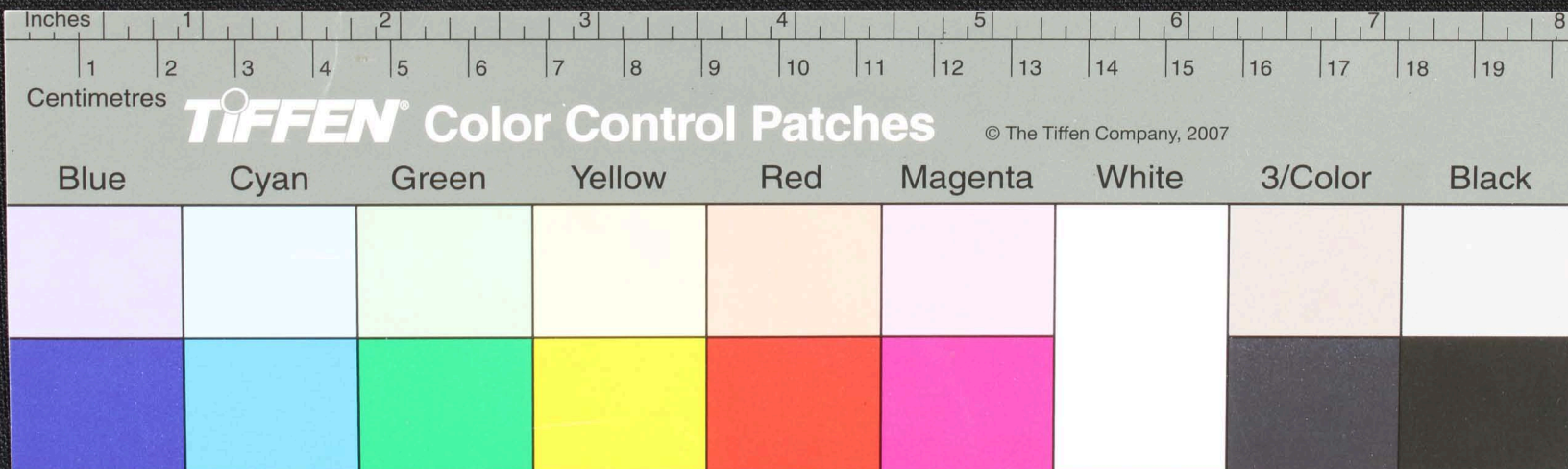
Handwritten text in Tamil script on a palm leaf manuscript. The text is arranged in approximately six horizontal lines. The first line begins with a circular symbol, possibly a date or a specific marker. The script is dense and fills most of the leaf's surface.



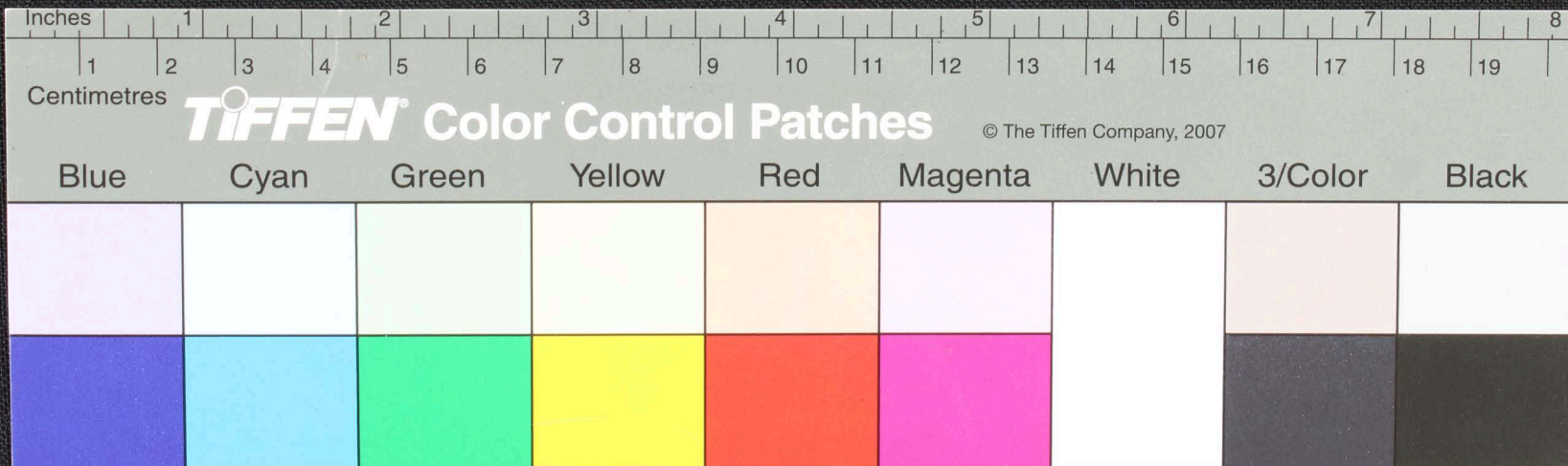
Handwritten text on a fragment of aged parchment, likely in an ancient script. The text is arranged in approximately five lines, though the left edge is heavily damaged and irregular. The ink is dark and the parchment is yellowed with age.



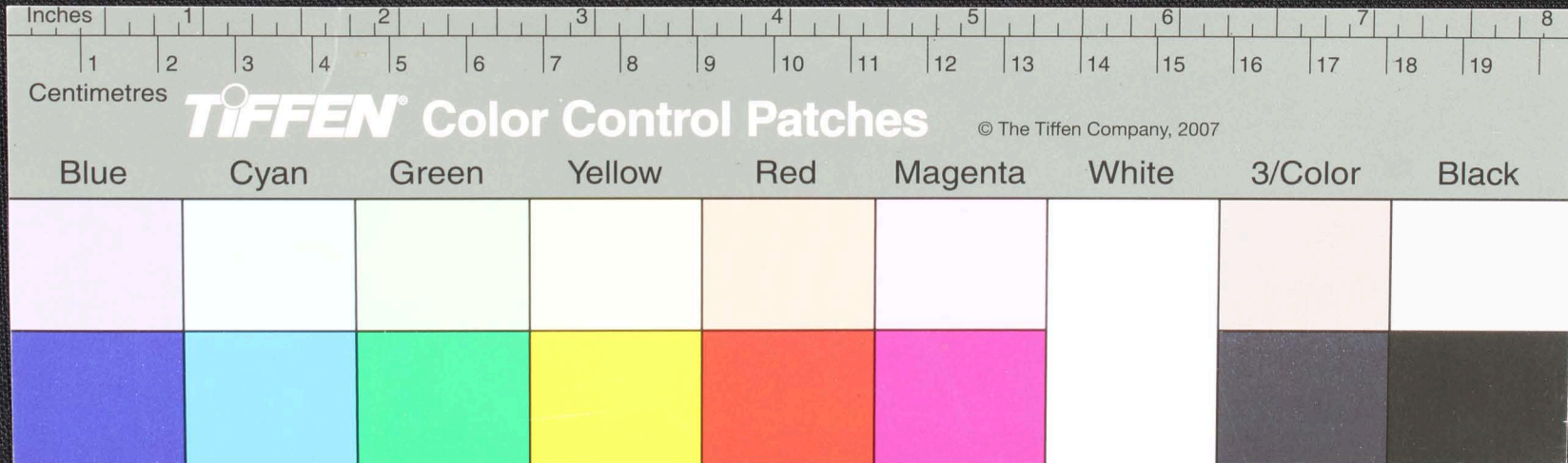
Handwritten text in an ancient script, likely Tamil, on a palm leaf manuscript. The text is arranged in approximately five horizontal lines across the length of the leaf. The script is finely etched into the surface of the dried leaf, which shows signs of age and wear, particularly at the left end where it is torn.



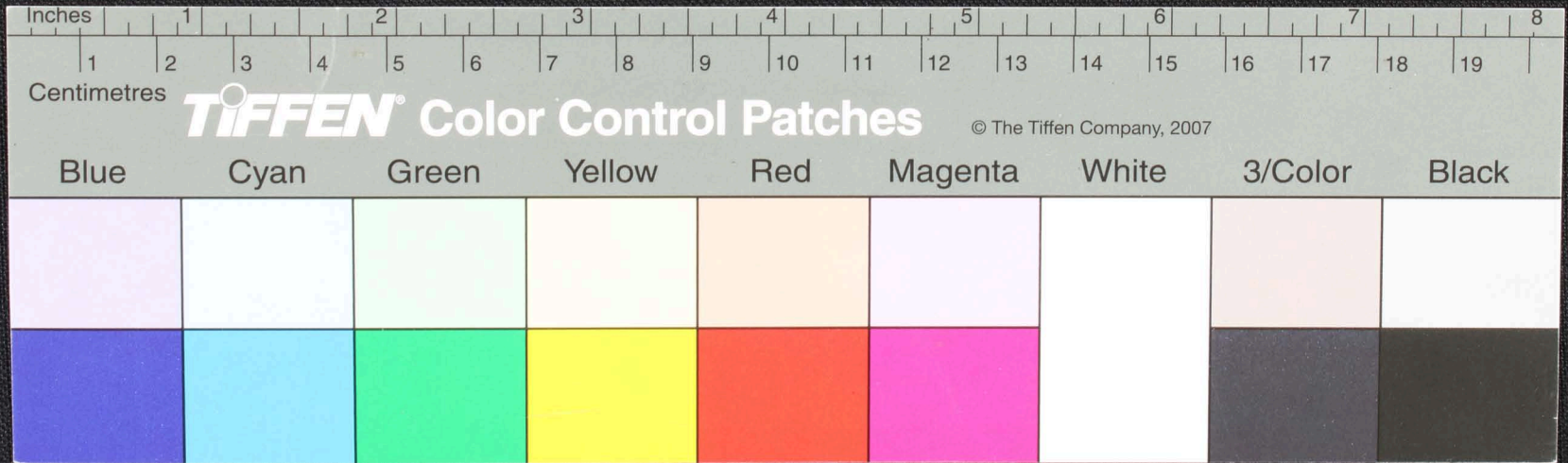
Handwritten text in Tamil script on a palm leaf manuscript fragment. The text is arranged in approximately six horizontal lines, though the left edge is significantly damaged and irregular. The characters are dark and clearly legible against the light brown background of the leaf. The script appears to be a traditional form of Tamil used in historical manuscripts.



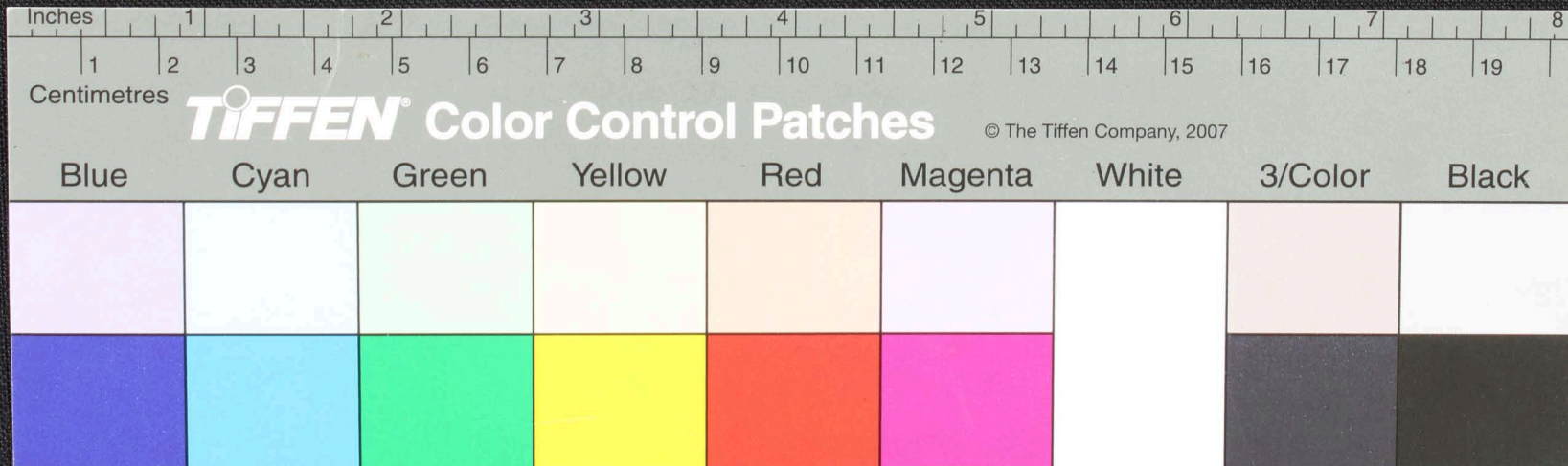
Handwritten text in Tamil script on a palm leaf manuscript fragment. The text is arranged in approximately four horizontal lines, though some characters are obscured by the irregular, torn edges of the leaf. The script is dark and appears to be a traditional form of the Tamil language.



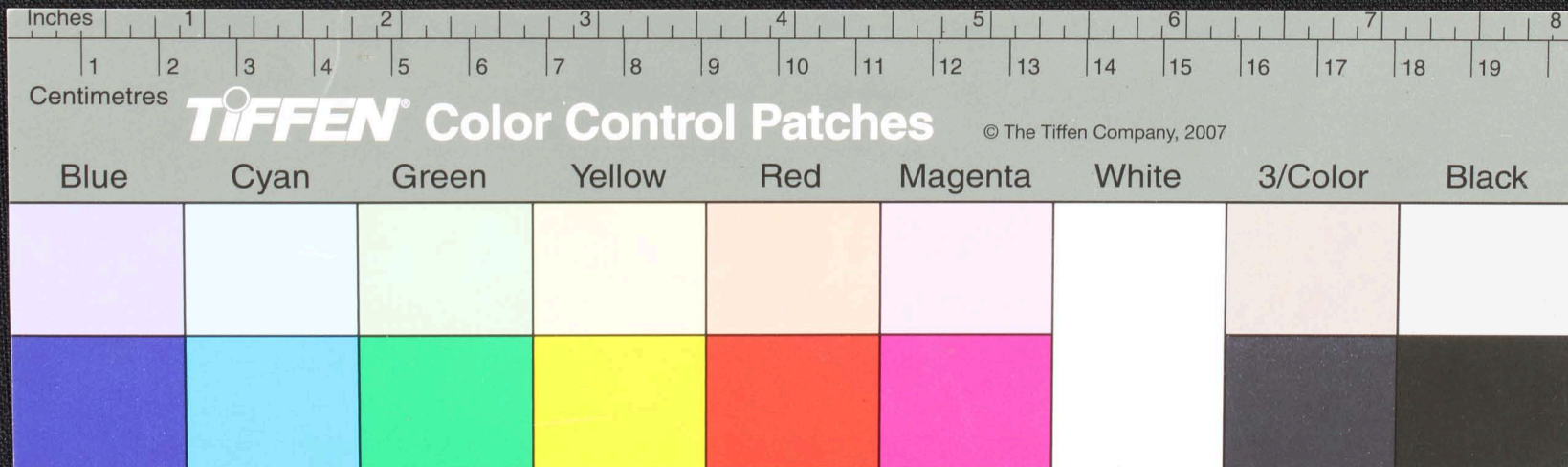
Handwritten Tamil script on a palm leaf fragment. The text is arranged in approximately four horizontal lines. The script is dark and appears to be a form of classical or historical Tamil. The leaf fragment is irregularly shaped with some damage on the left side.



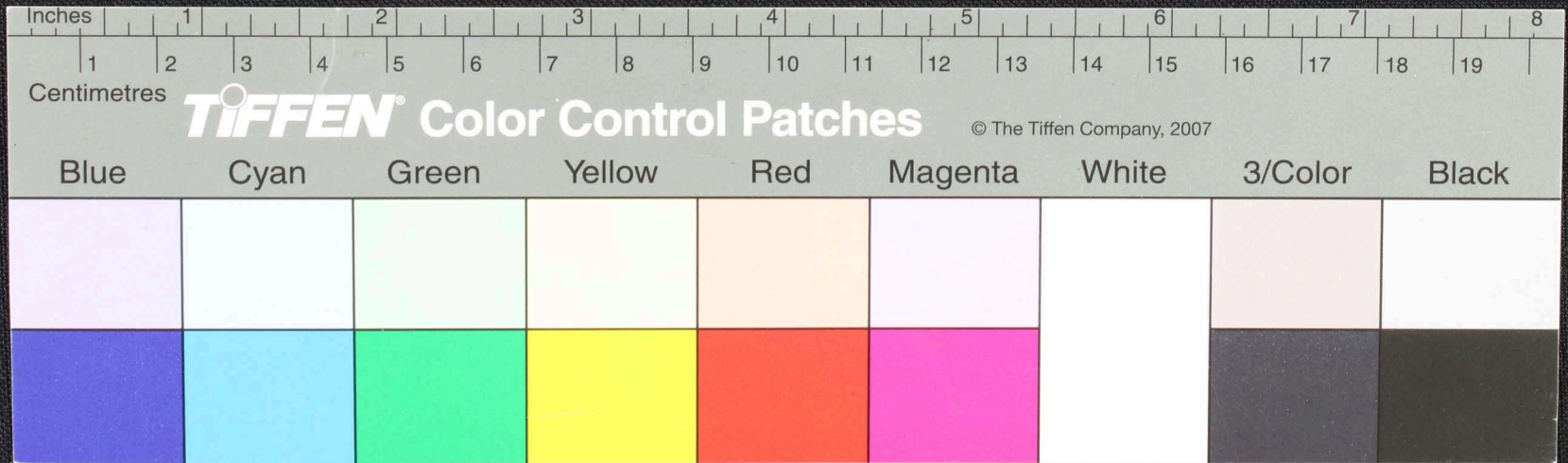
Handwritten text in Tamil script on a palm leaf manuscript. The text is arranged in approximately five lines, though some characters are obscured by the irregular, torn edges of the leaf. The script is a traditional form of the Tamil language.



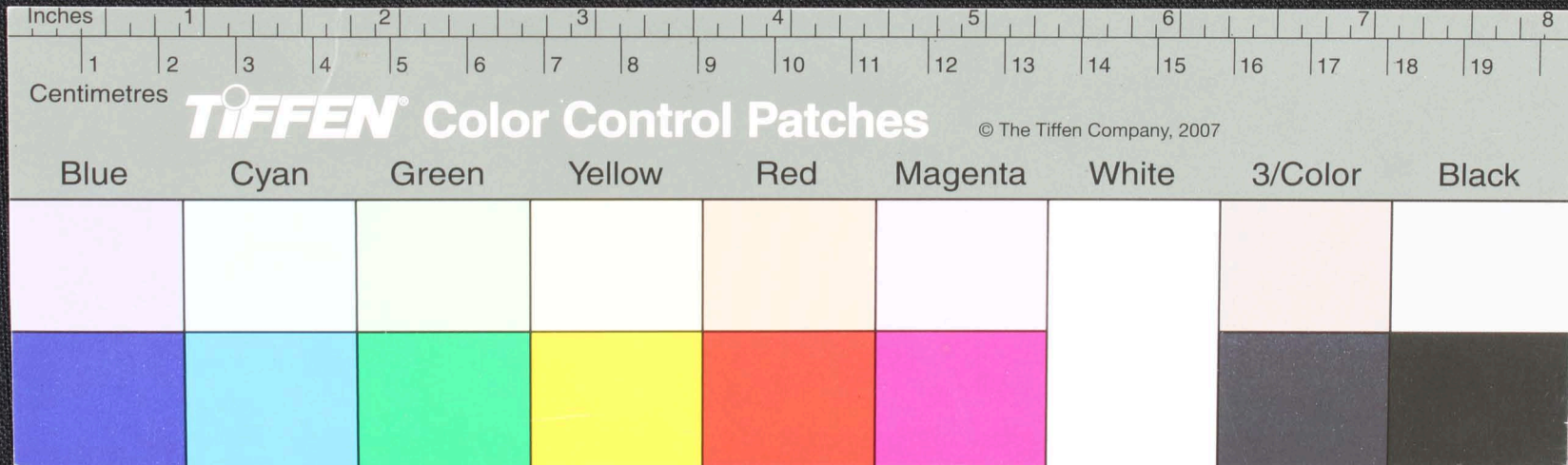
Handwritten text on a palm leaf manuscript, likely in Tamil script. The text is arranged in approximately four horizontal lines across the length of the leaf. The leaf shows signs of age and wear, with some fraying at the ends.



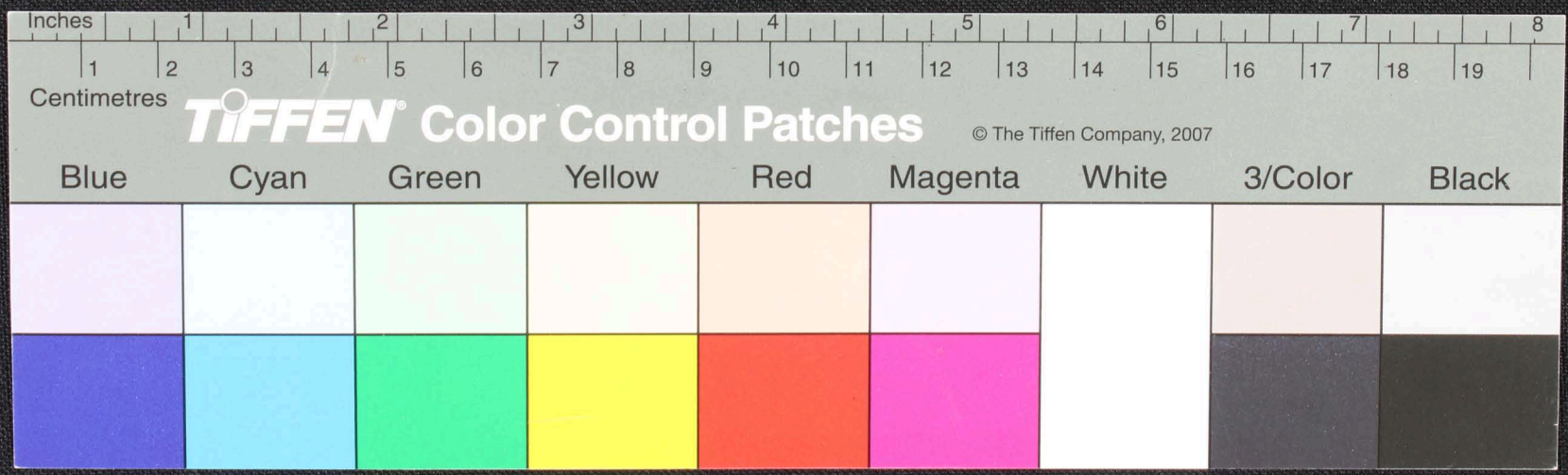
Handwritten text in Tamil script on a palm leaf manuscript. The text is arranged in approximately five horizontal lines across the length of the leaf. The script is dark and appears to be a traditional form of the Tamil language.



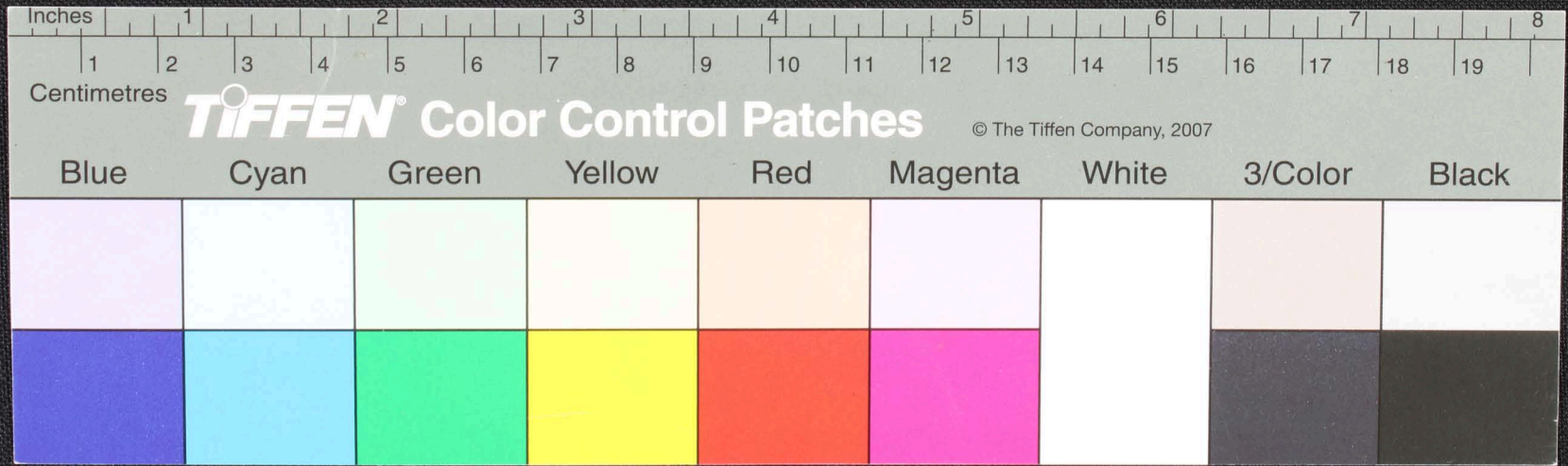
Handwritten text in Tamil script on a palm leaf manuscript fragment. The text is arranged in approximately five horizontal lines, though some characters are obscured by the irregular, torn edges of the leaf. The script is a traditional form of the Tamil language.



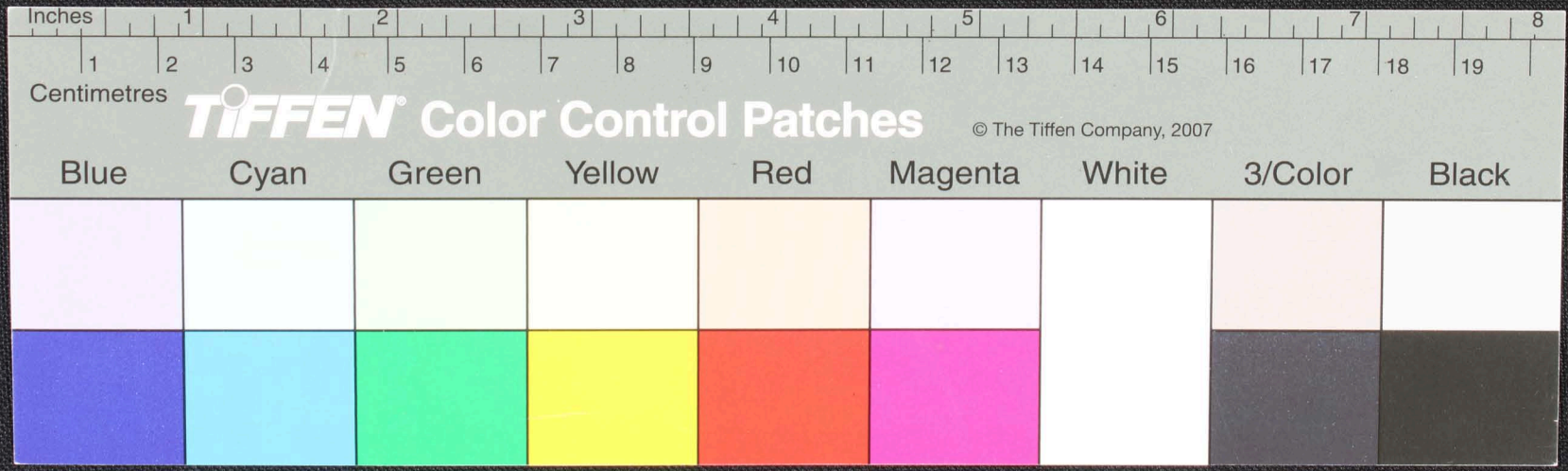
Handwritten Tamil script on a palm leaf fragment. The text is arranged in approximately five horizontal lines. The script is a traditional form of the Tamil language, likely used for religious or administrative purposes. The leaf is aged and shows signs of wear, with some characters appearing slightly faded or obscured by the texture of the material.



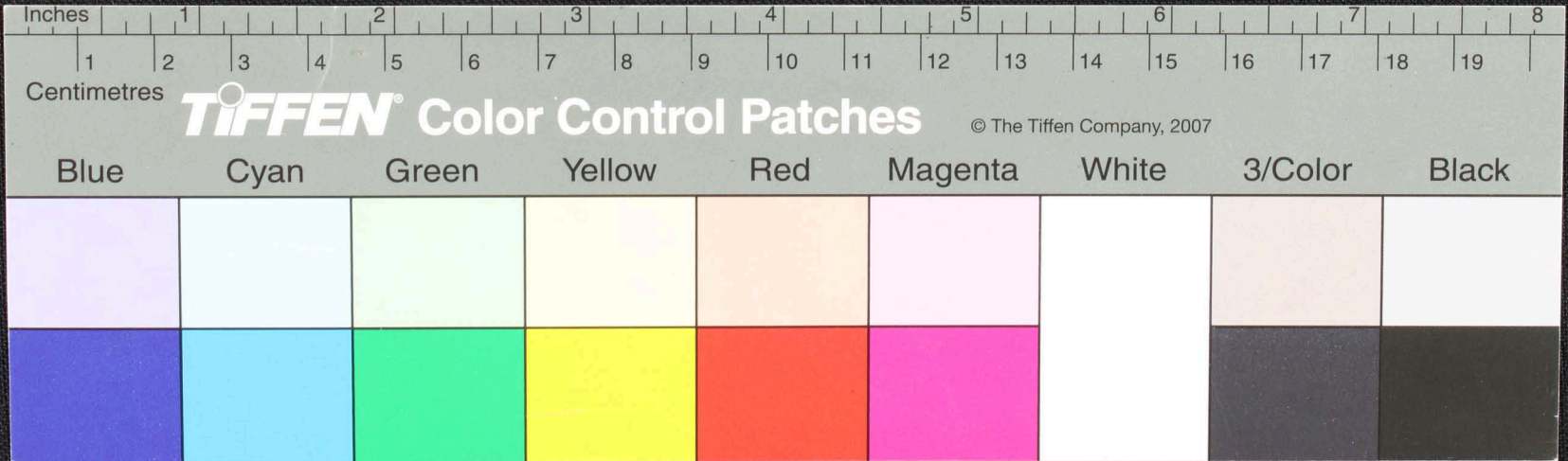
Handwritten Tamil script on a palm leaf fragment. The text is arranged in approximately five lines, with some characters circled in red ink. The script appears to be a form of historical or religious Tamil, possibly including names or titles. The leaf is aged and has irregular, torn edges.



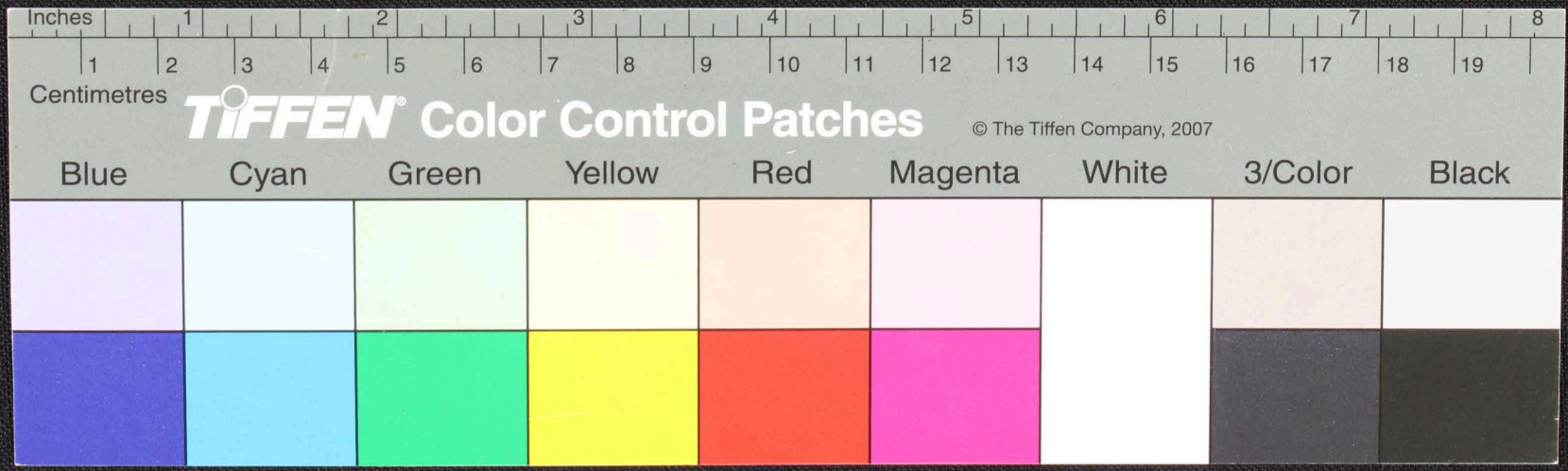
Handwritten text in Tamil script on a palm leaf manuscript fragment. The text is arranged in approximately six horizontal lines, though the left edge is irregular and torn. The characters are dark and clearly legible against the light brown background of the leaf. The script appears to be a traditional form of Tamil used in historical manuscripts.



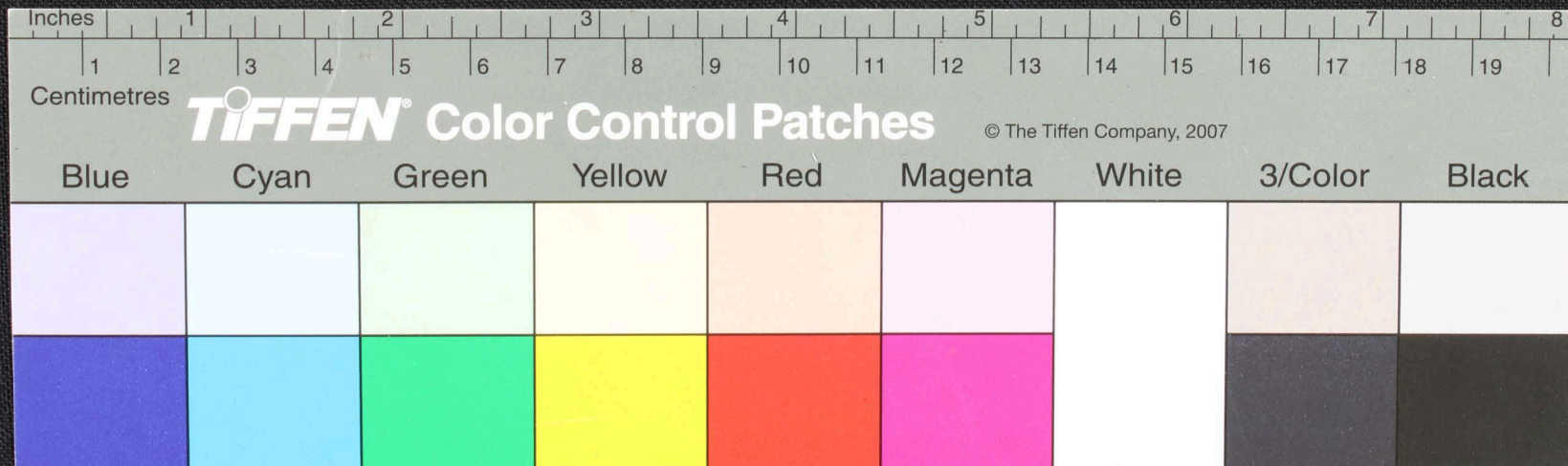
Handwritten text in an ancient script, likely Tamil, on a palm leaf manuscript. The text is arranged in approximately six horizontal lines across the length of the leaf. The script is finely etched into the surface of the dried leaf.



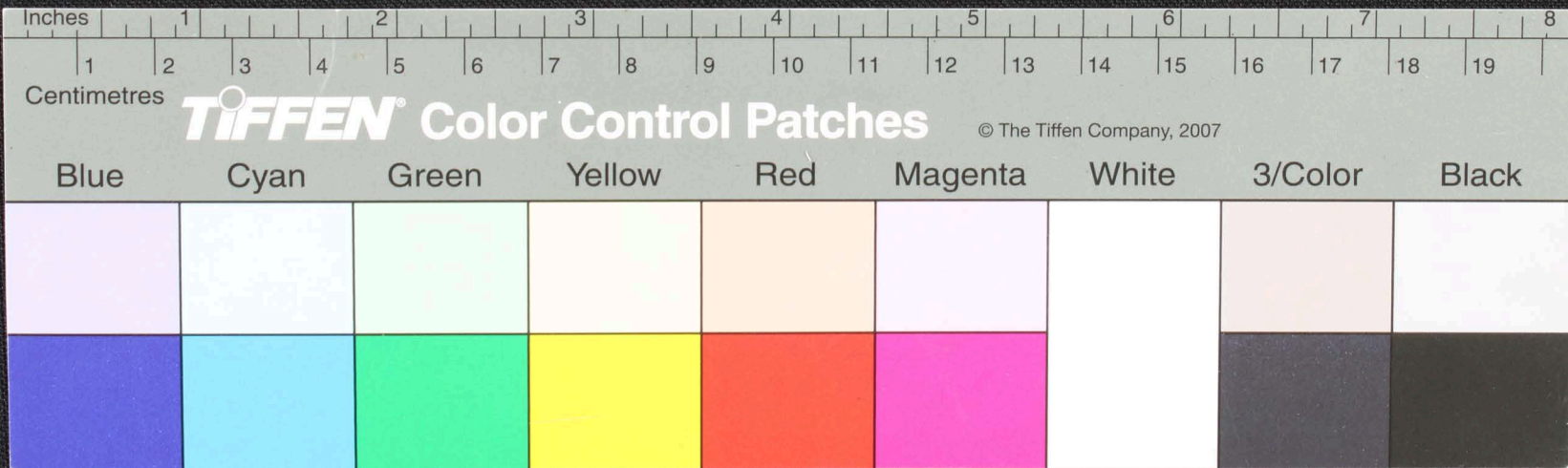
Handwritten Tamil script on a palm leaf manuscript fragment. The text is arranged in approximately five horizontal lines, though the left edge is irregular and damaged. The characters are dark and clearly legible against the light-colored wood. The script appears to be a form of classical or historical Tamil, possibly containing religious or philosophical content given the nature of such manuscripts.



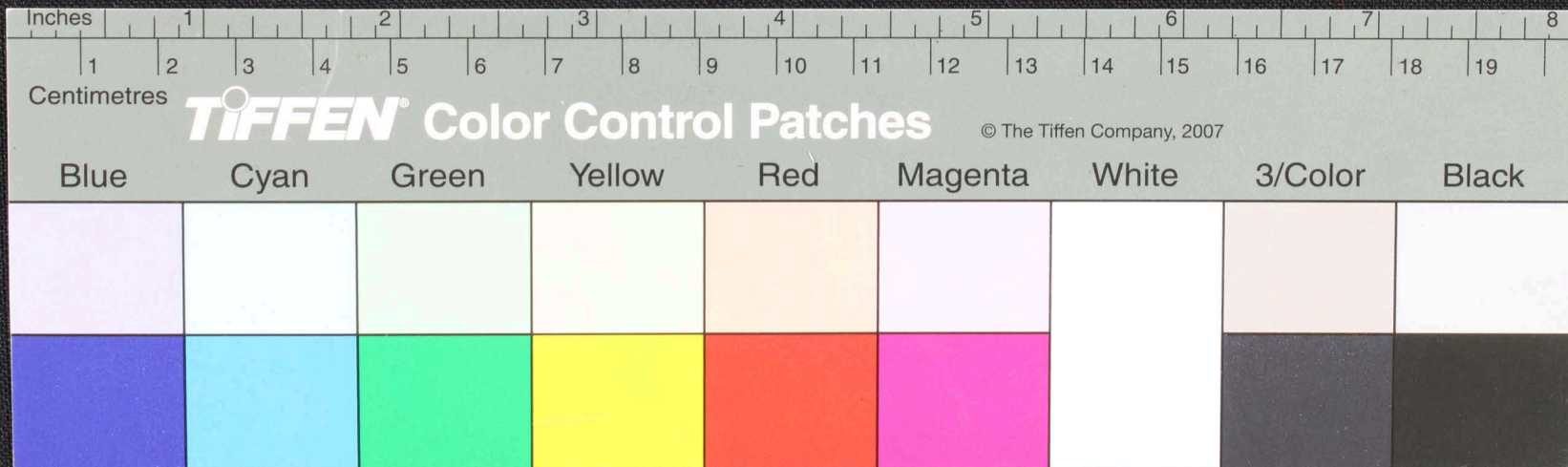
Handwritten text in Tamil script on a palm leaf manuscript. The text is arranged in approximately four horizontal lines across the length of the leaf. The script is dark and appears to be a traditional form of the Tamil language.



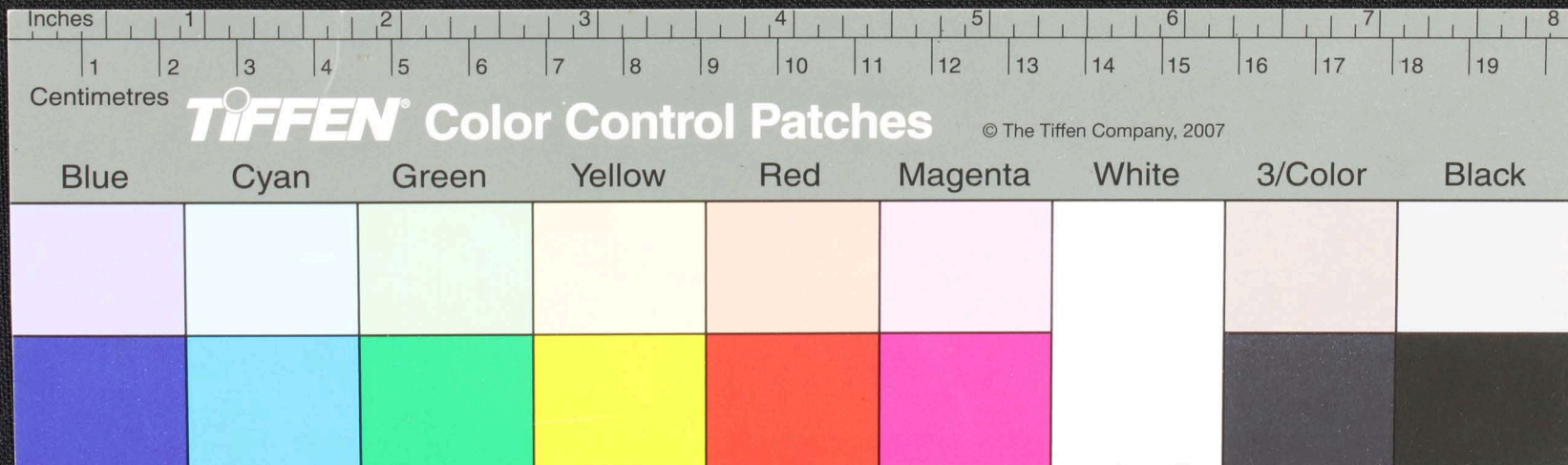
Handwritten text in Tamil script on a palm leaf manuscript. The text is arranged in approximately six horizontal lines across the length of the leaf. The script is finely etched into the surface of the dried leaf.



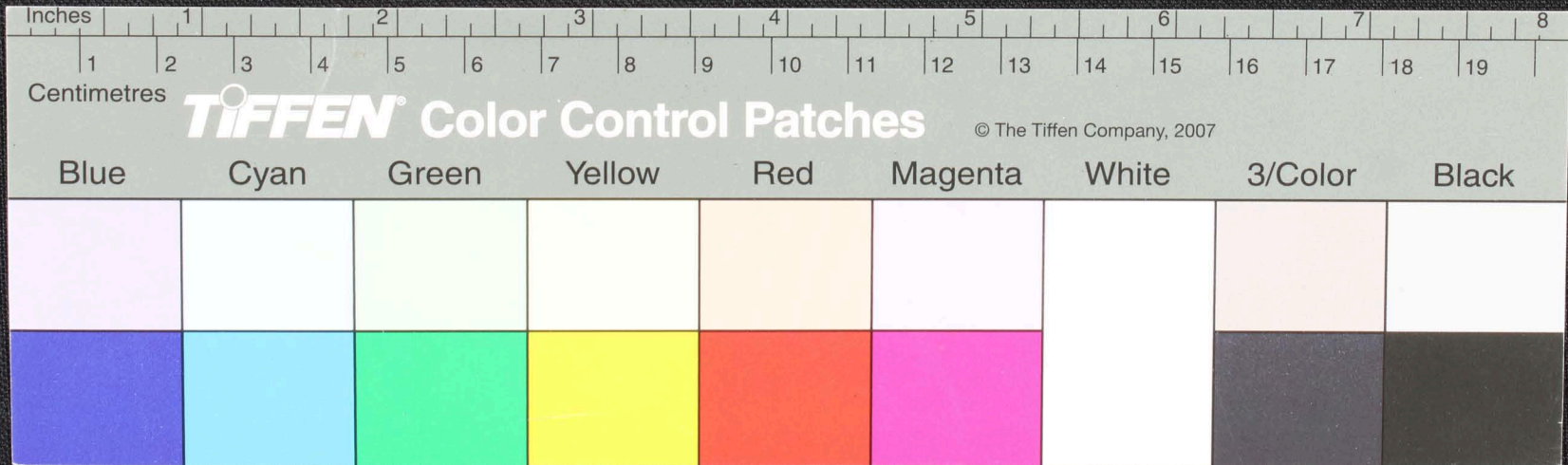
Handwritten text in Tamil script on a palm leaf manuscript. The text is arranged in three lines, with some characters appearing to be in a different script or dialect. The leaf is aged and shows signs of wear, including a small hole near the center.



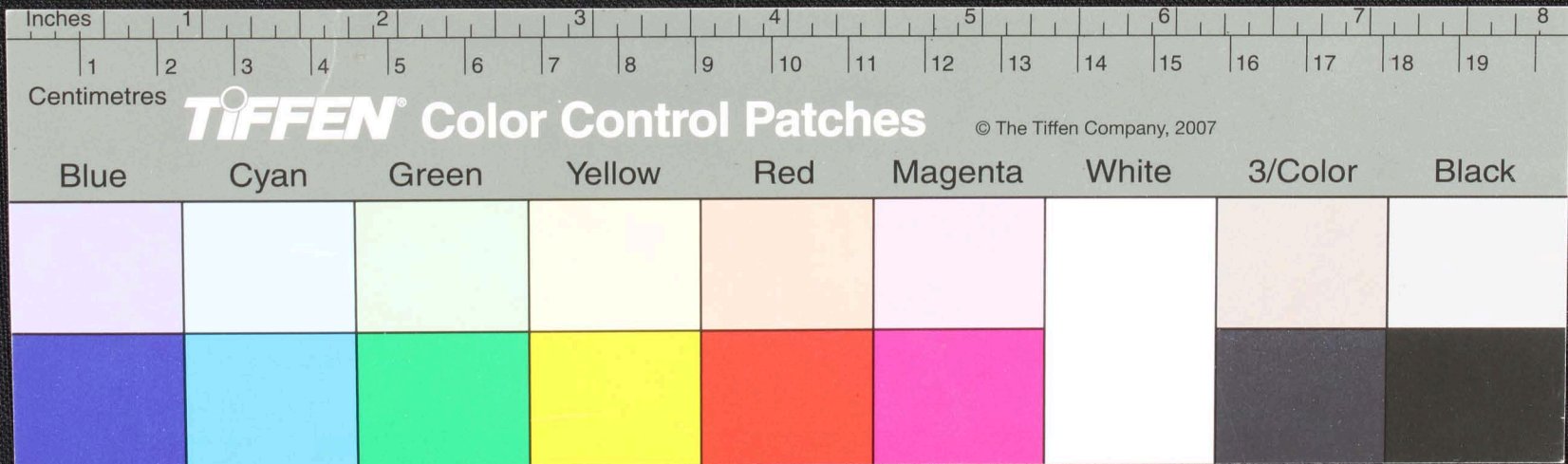
Handwritten Tamil script on a palm leaf manuscript fragment. The text is arranged in approximately five horizontal lines. The script is finely etched into the surface of the dried leaf. The fragment is roughly rectangular with irregular, torn edges, particularly on the left side. The characters are in a traditional Tamil script, likely from a historical or religious text.



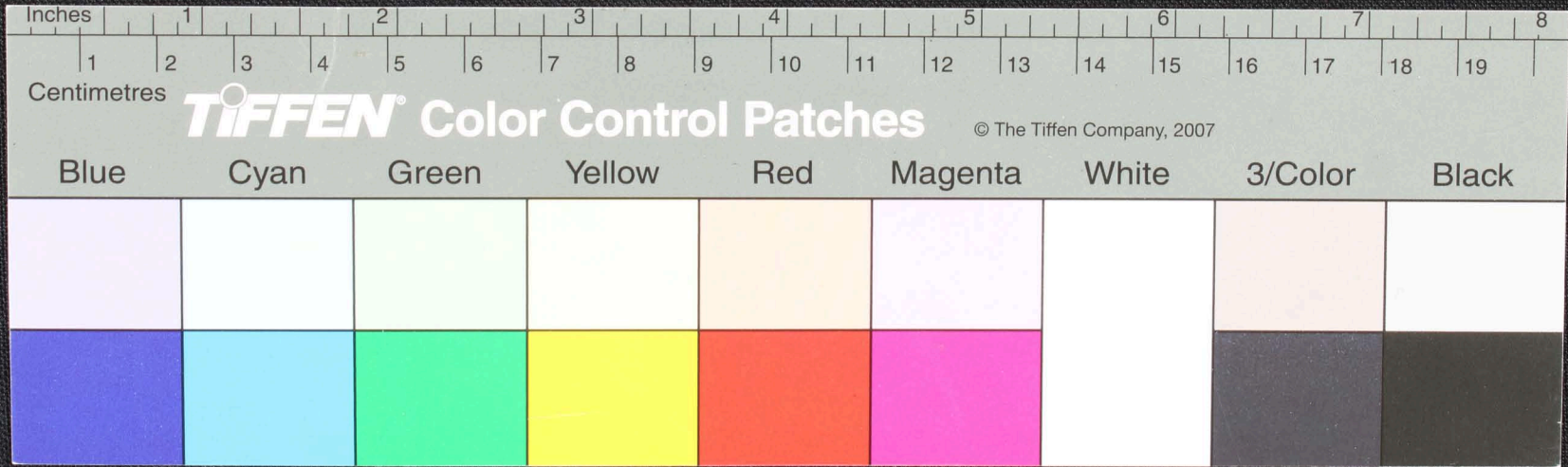
Handwritten text in an ancient script, likely Tamil, on a palm leaf manuscript. The text is arranged in approximately five horizontal lines. A circular hole is visible on the left side of the leaf, used for binding multiple leaves together. The script is finely etched into the surface of the dried leaf.



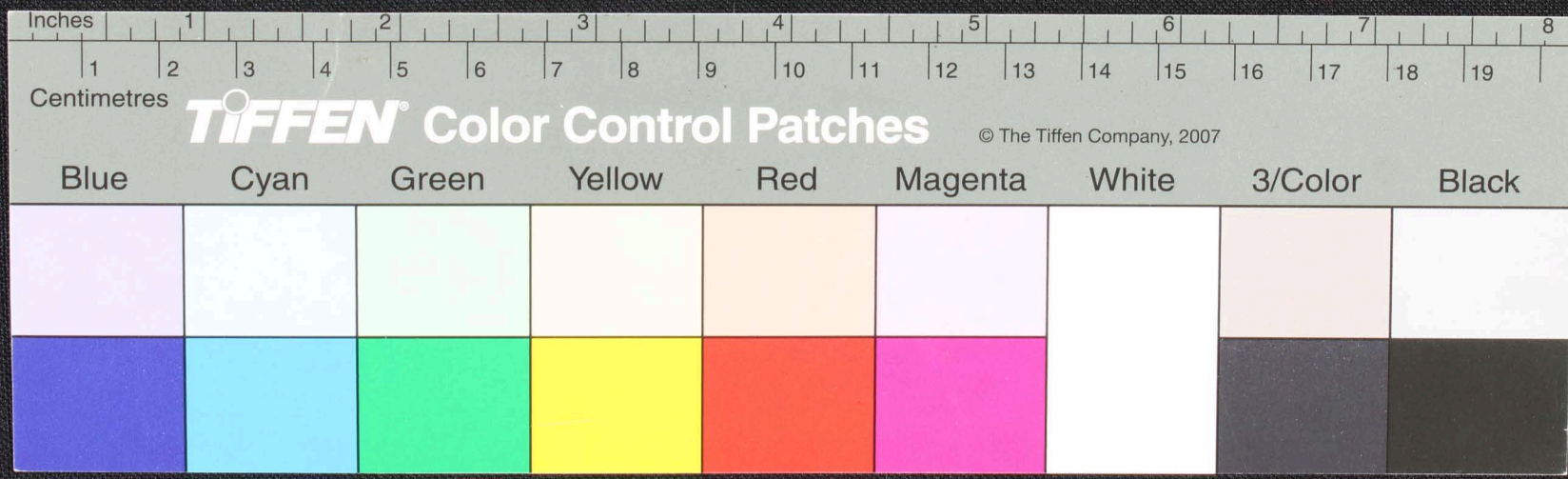
Handwritten text in Tamil script on a palm leaf manuscript. The text is arranged in approximately four horizontal lines. The script is finely etched into the surface of the dried leaf. A circular hole is visible on the left side of the leaf, which is a traditional feature for threading a cord to bind multiple leaves together into a book format. The leaf shows signs of age and wear, with some fraying at the edges.



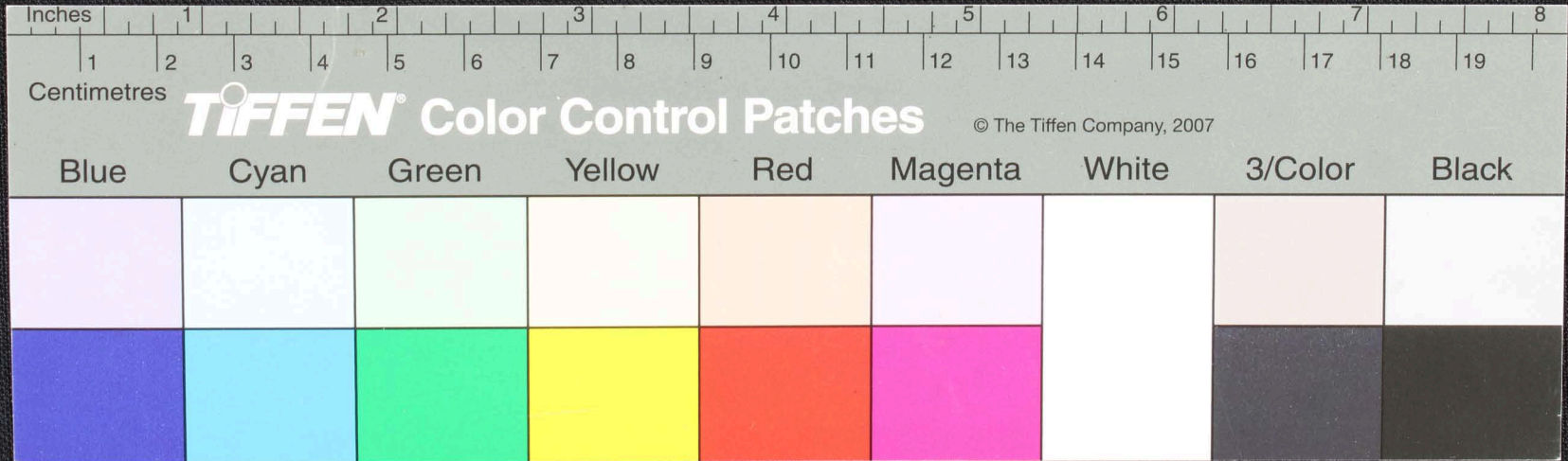
Handwritten text in Tamil script on a palm leaf manuscript. The text is arranged in approximately five lines, starting with a large initial character. The script is finely etched into the surface of the dried leaf.



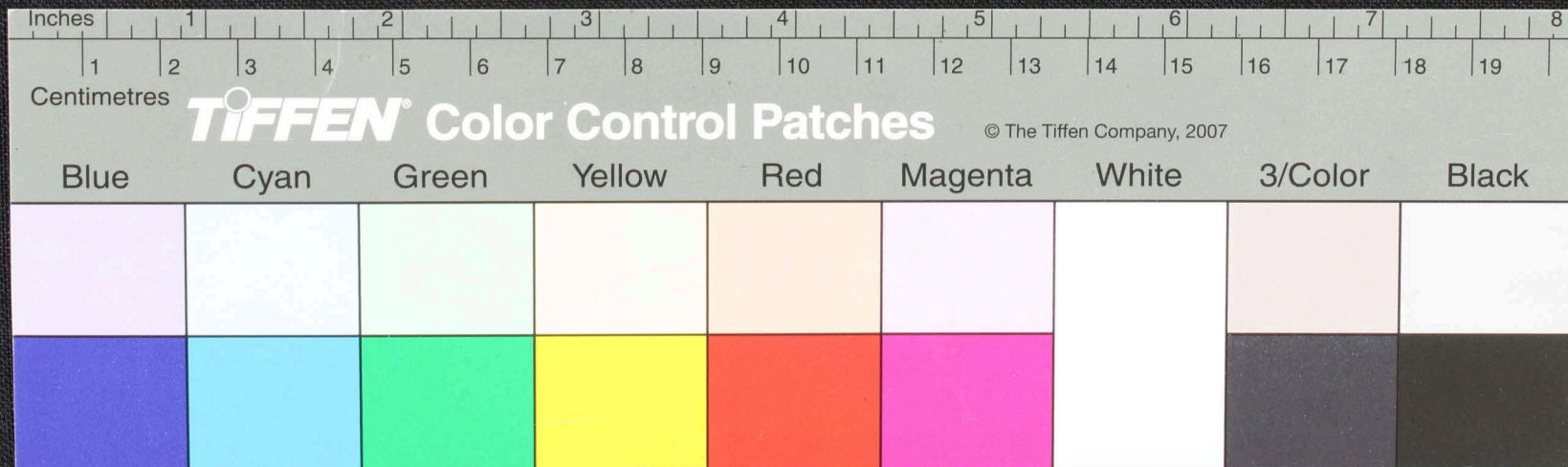
Handwritten Tamil script on a palm leaf manuscript. The text is arranged in approximately five horizontal lines. The script is a traditional form of the Tamil language, likely used for religious or philosophical purposes. The leaf shows signs of age, including a hole on the left side and some staining.



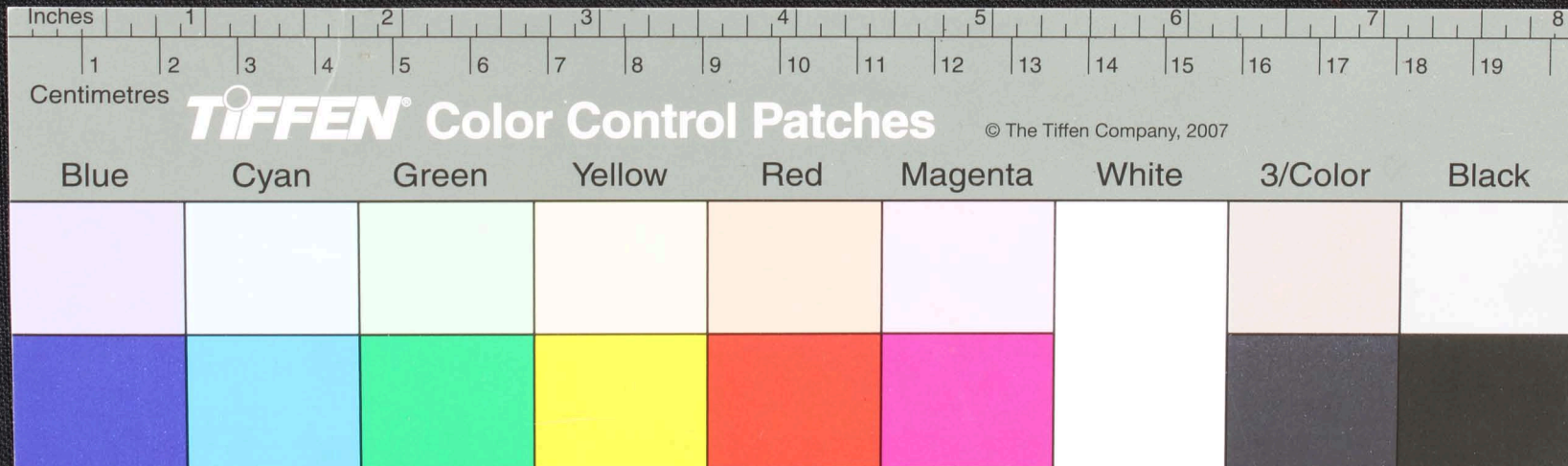
Handwritten Tamil script on a palm leaf fragment. The text is arranged in approximately five horizontal lines. The script is a traditional form of the Tamil language, likely used for religious or administrative purposes. The leaf shows signs of age and wear, with some fraying at the edges.



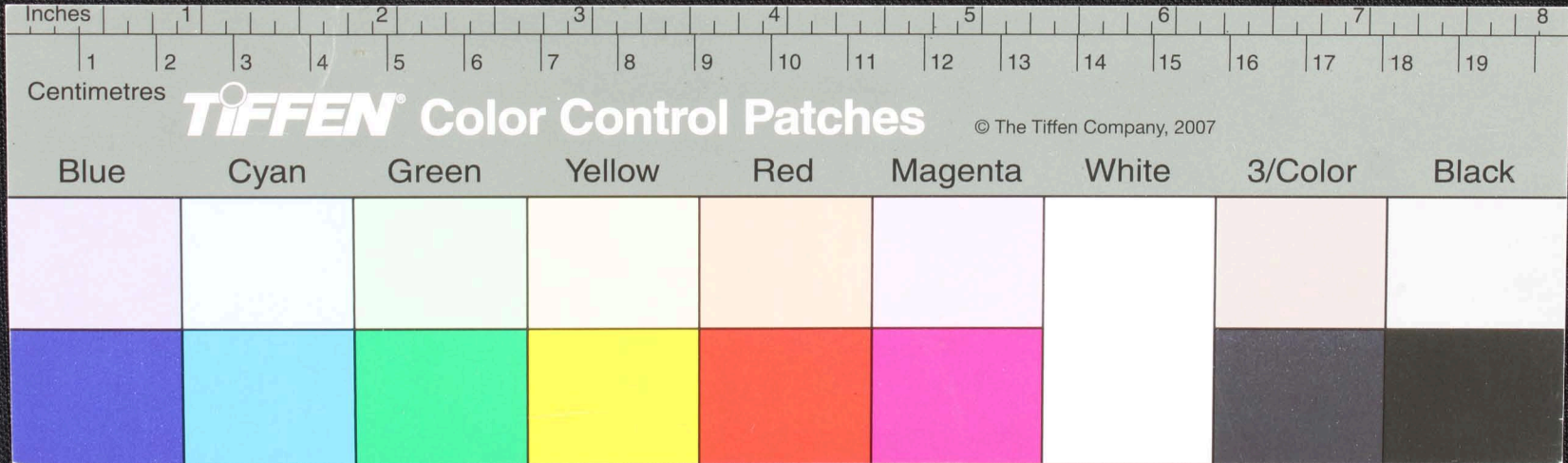
Handwritten text in Tamil script on a palm leaf manuscript fragment. The text is arranged in two lines. The first line contains approximately 12 characters, and the second line contains approximately 15 characters. The leaf is aged and shows signs of wear, including a hole on the left side.



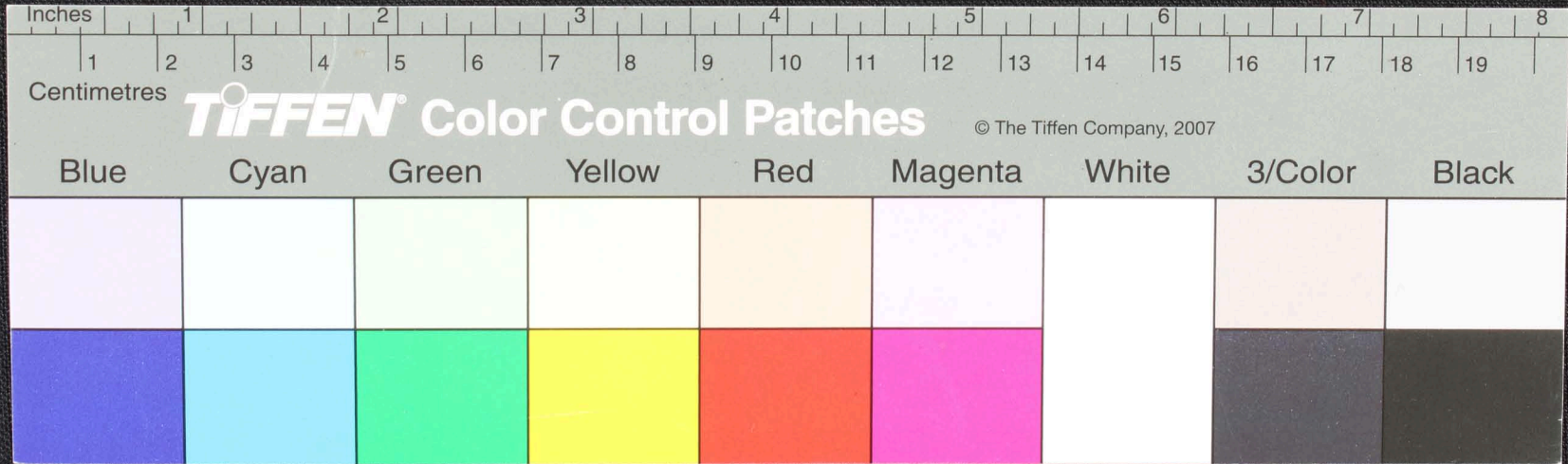
Handwritten text in Tamil script on a palm leaf manuscript. The text is arranged in approximately four lines, though the left edge is heavily damaged and irregular. The characters are dark and clearly legible against the light-colored leaf background.



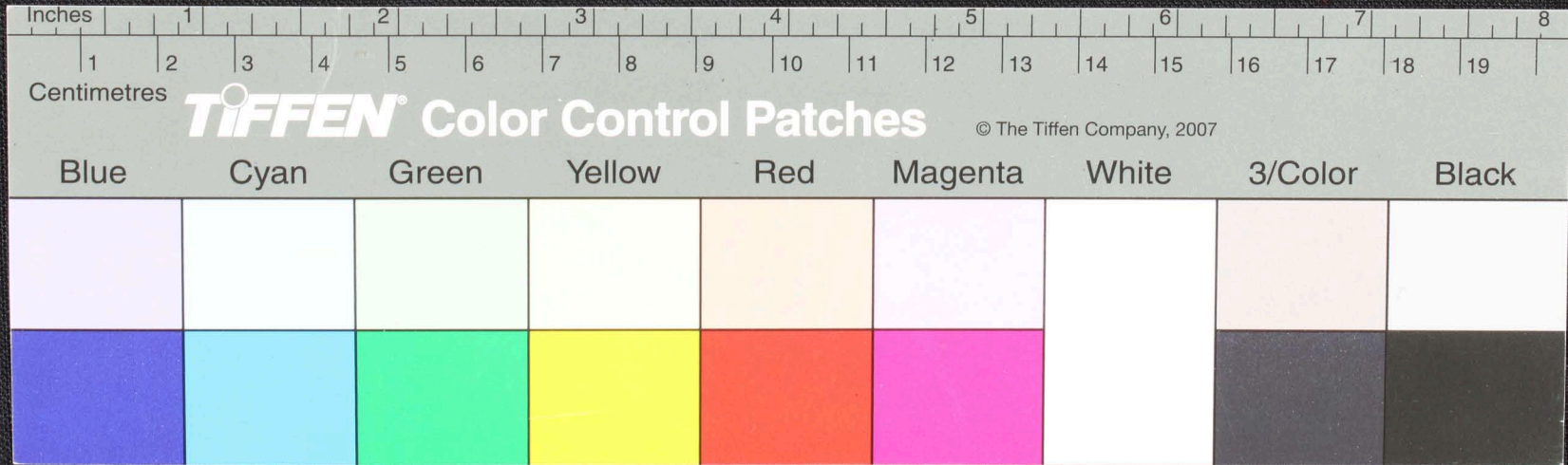
Handwritten Tamil script on a palm leaf manuscript. The text is arranged in approximately five horizontal lines, written in a traditional cursive style. The leaf is aged and shows some wear and tear at the edges.



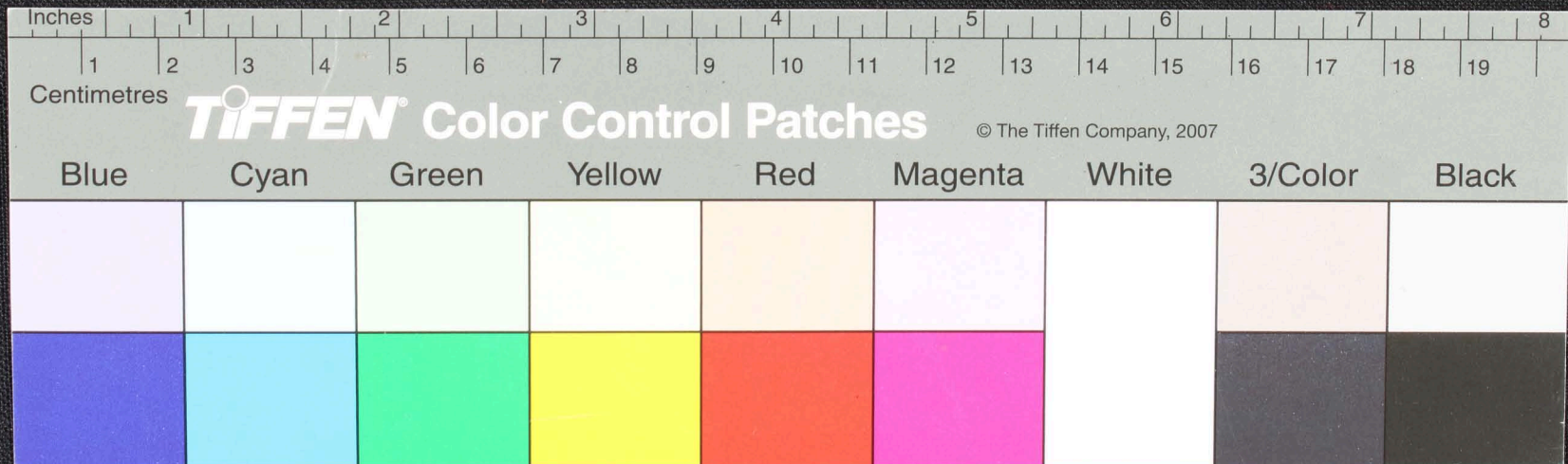
Handwritten text in Tamil script on a palm leaf manuscript fragment. The text is arranged in approximately six horizontal lines, though the right edge is irregular and torn. The characters are dark and clearly legible against the light brown background of the leaf.



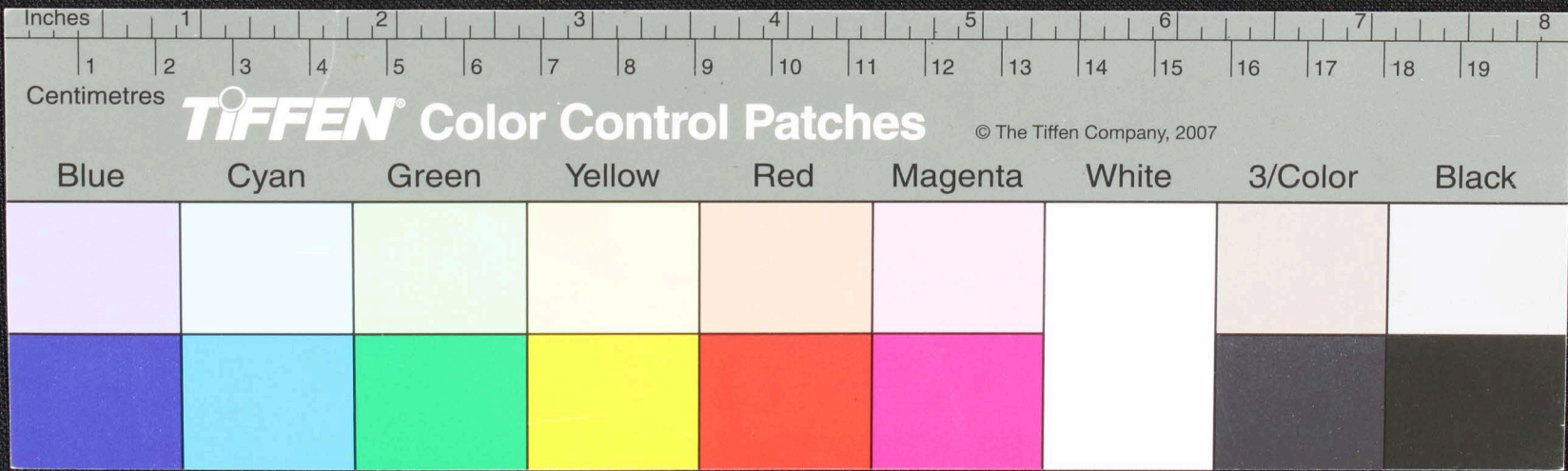
Handwritten text in Tamil script on a palm leaf manuscript. The text is arranged in approximately five lines across the length of the leaf. The script is dark and appears to be a traditional form of the Tamil language.



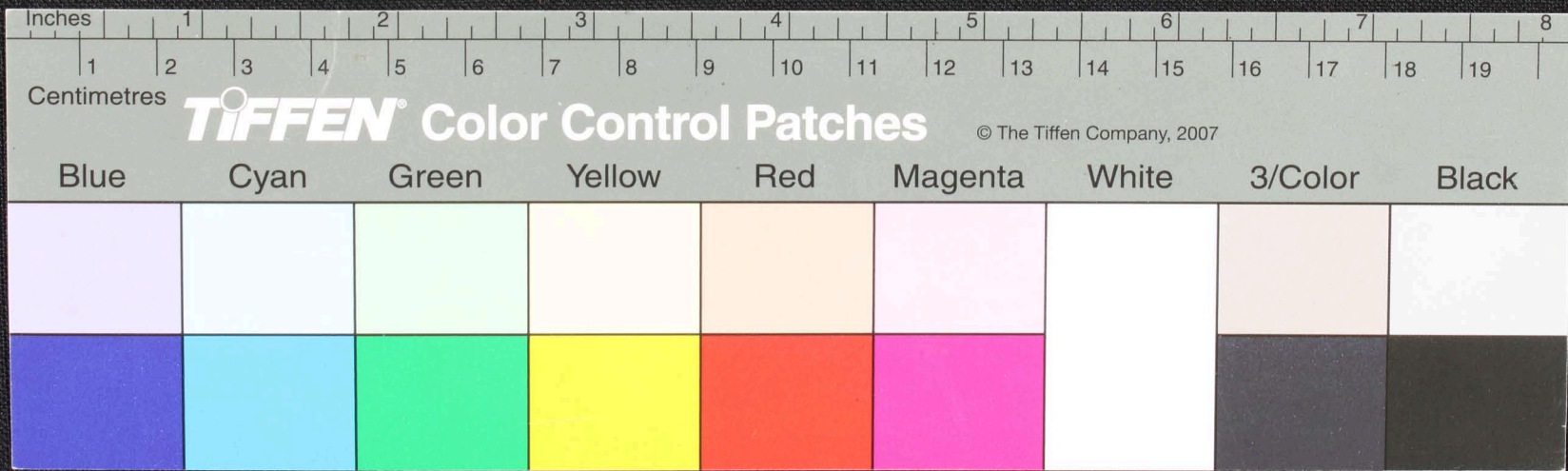
Handwritten text in Tamil script on a palm leaf manuscript fragment. The text is arranged in approximately five horizontal lines, though the left edge is significantly damaged and irregular. The script is finely etched into the surface of the dried leaf.



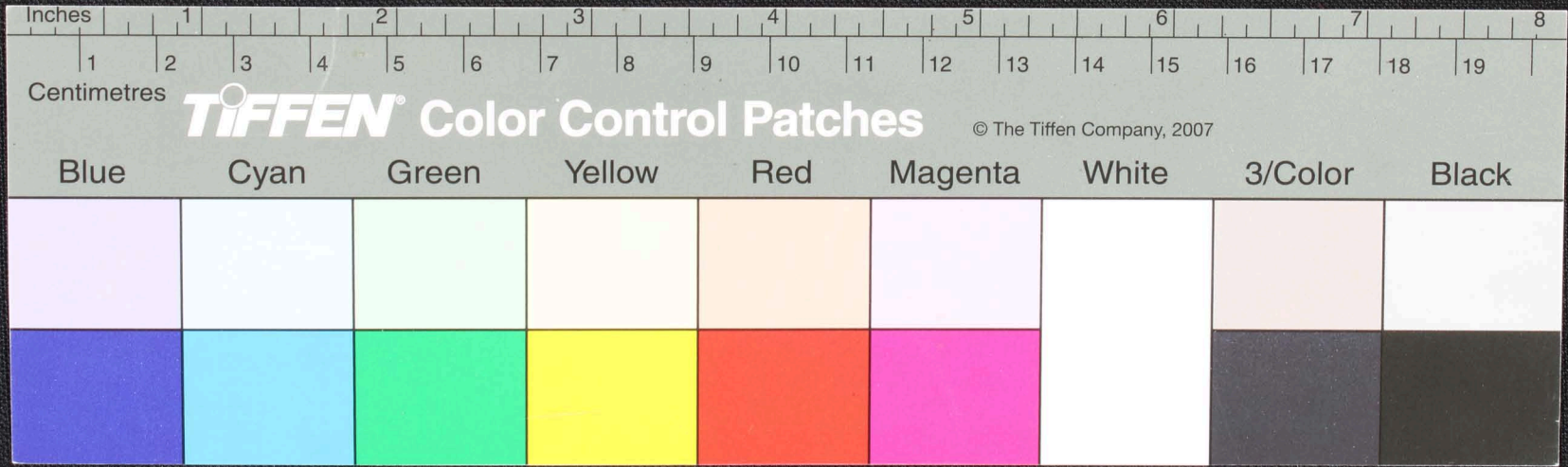
Handwritten text in Tamil script on a palm leaf manuscript. The text is arranged in approximately five horizontal lines across the length of the leaf. The script is finely etched into the surface of the dried leaf. The leaf shows signs of age and wear, with some fraying and a small hole on the left side.



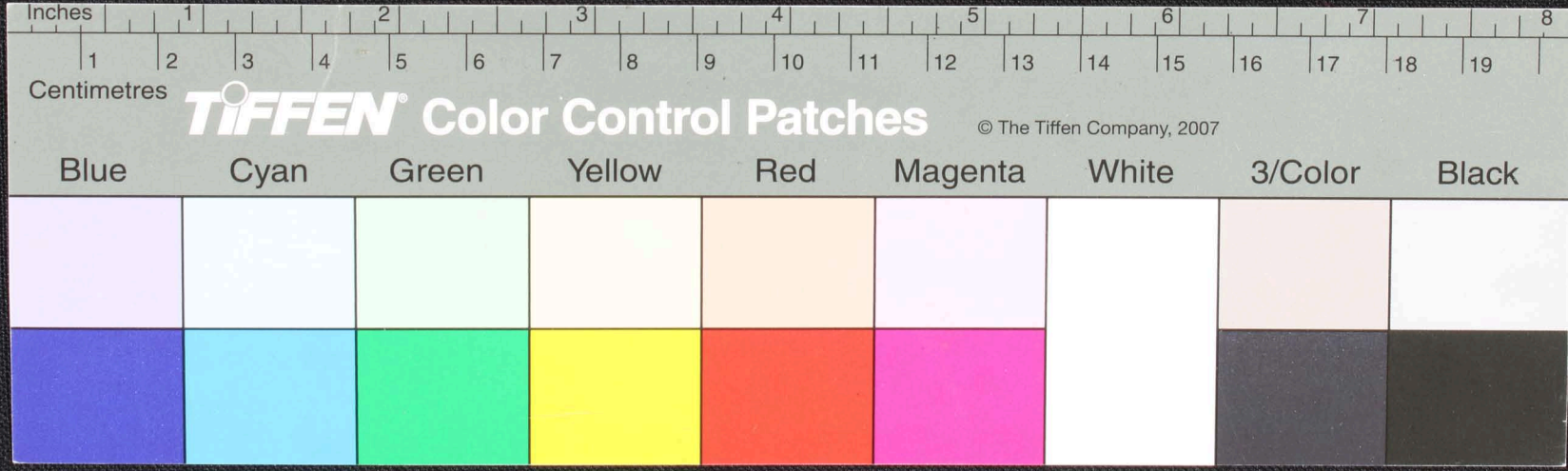
Handwritten text in Tamil script on a palm leaf fragment. The text is arranged in approximately five lines, though some characters are obscured by the irregular, torn edges of the leaf. The script is a traditional form of the Tamil language.



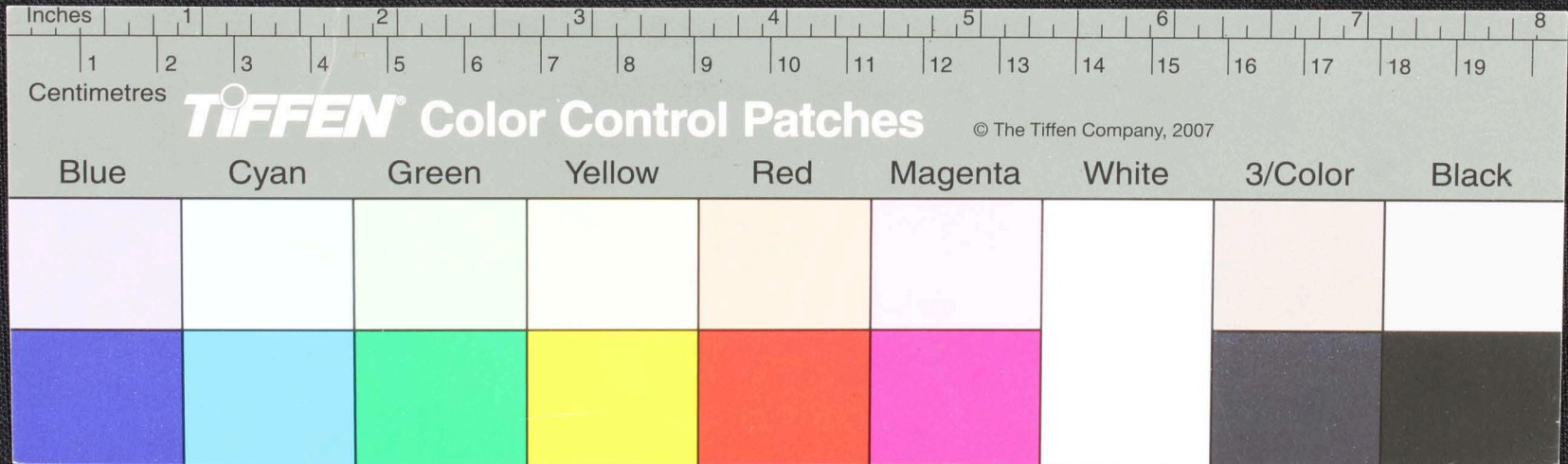
Handwritten text on a palm-leaf manuscript fragment, likely in an Indic script. The text is faint and partially obscured by the leaf's texture and damage. Some legible characters include 'Om', 'Sri', and 'Namah'.



Handwritten Tamil script on a palm leaf fragment. The text is arranged in approximately five horizontal lines. The script is a traditional form of the Tamil language, likely used for religious or administrative purposes. The leaf is aged and shows signs of wear, with some characters being difficult to decipher due to fading and the texture of the material.



Handwritten Tamil script on a palm leaf manuscript. The text is arranged in two columns. The left column contains approximately three lines of text, and the right column contains approximately two lines. In the center, there is a circular diagram with internal lines and a central point, possibly representing a celestial or mathematical concept. The leaf is aged and has a rough, torn edge on the left side.



கனக நய நிநநு அனர அனர இயைத்
 யுடி அரு உமது உமது ஏககநலா
 மயநலகூர் கால நி செனர உன
 மிதி செனலவிட நகு-மய கு விதி
 நி கால அருகினி உரு உதின கு நகலி
 சி உமலகு ஏ உரு மககிள்

