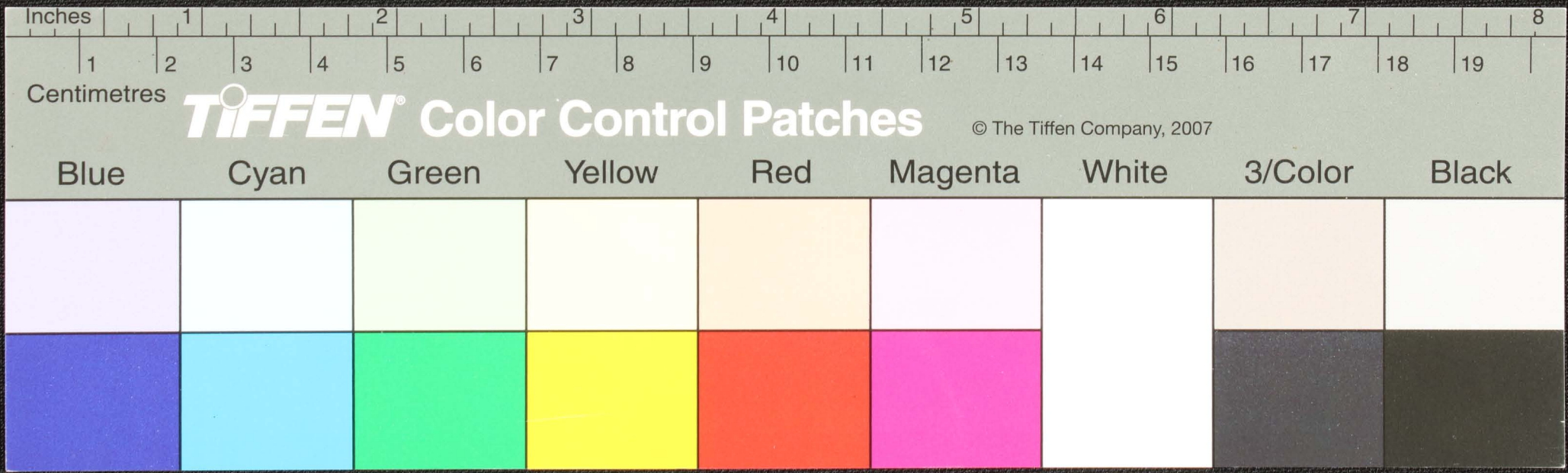
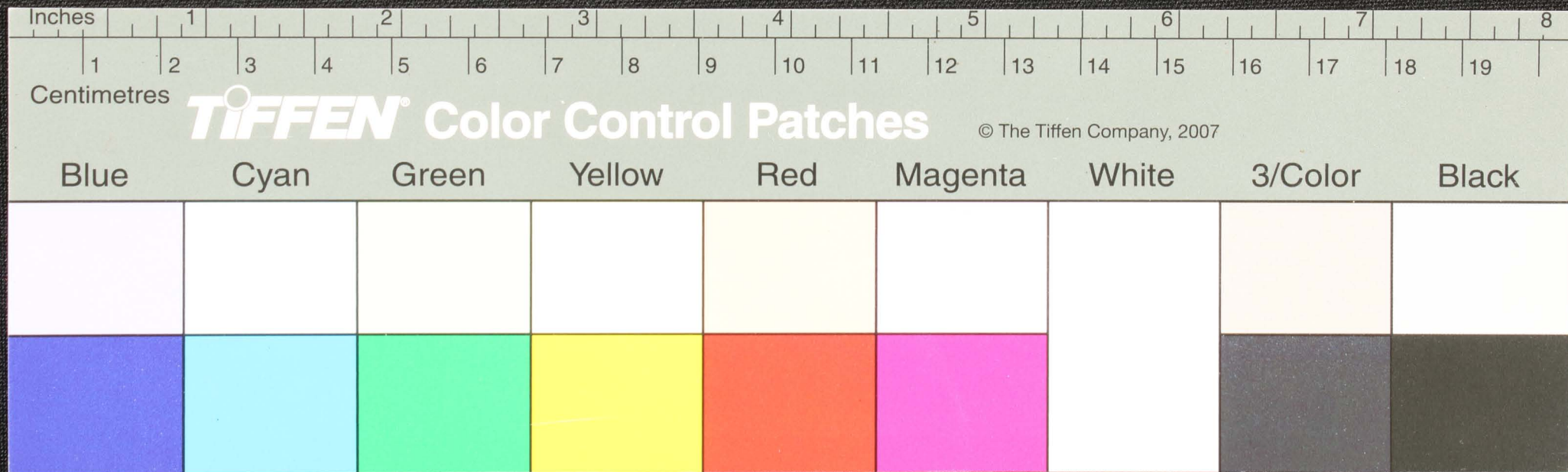


Fragment of a palm-leaf manuscript with handwritten text in an ancient script, possibly Tamil or Grantha. The text is arranged in horizontal lines across the length of the leaf. A small circular hole is visible near the center of the fragment.





Inches

1 2 3 4 5 6 7 8

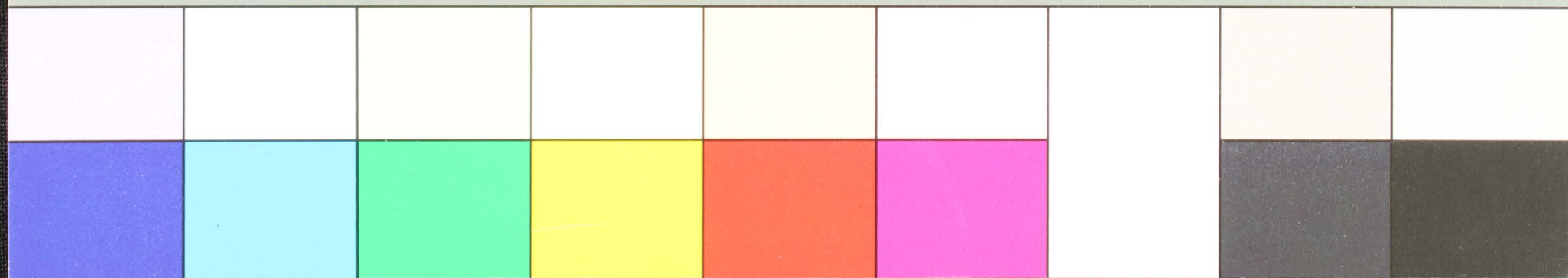
Centimetres

1 2 3 4 5 6 7 8 9 10 11 12 13 14 15 16 17 18 19

**TIFFEN** Color Control Patches

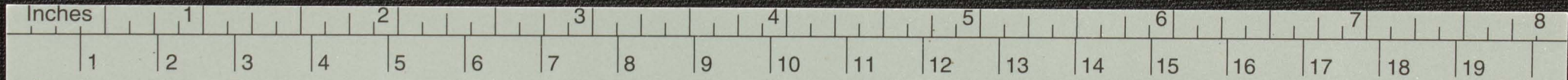
© The Tiffen Company, 2007

Blue Cyan Green Yellow Red Magenta White 3/Color Black



Handwritten text on the left side of the palm leaf manuscript, including a small circular mark and some illegible characters.

Main body of handwritten text in a South Indian script, possibly Grantha or Tamil, written across the length of the leaf. The text is arranged in two lines, with some characters enclosed in circles.

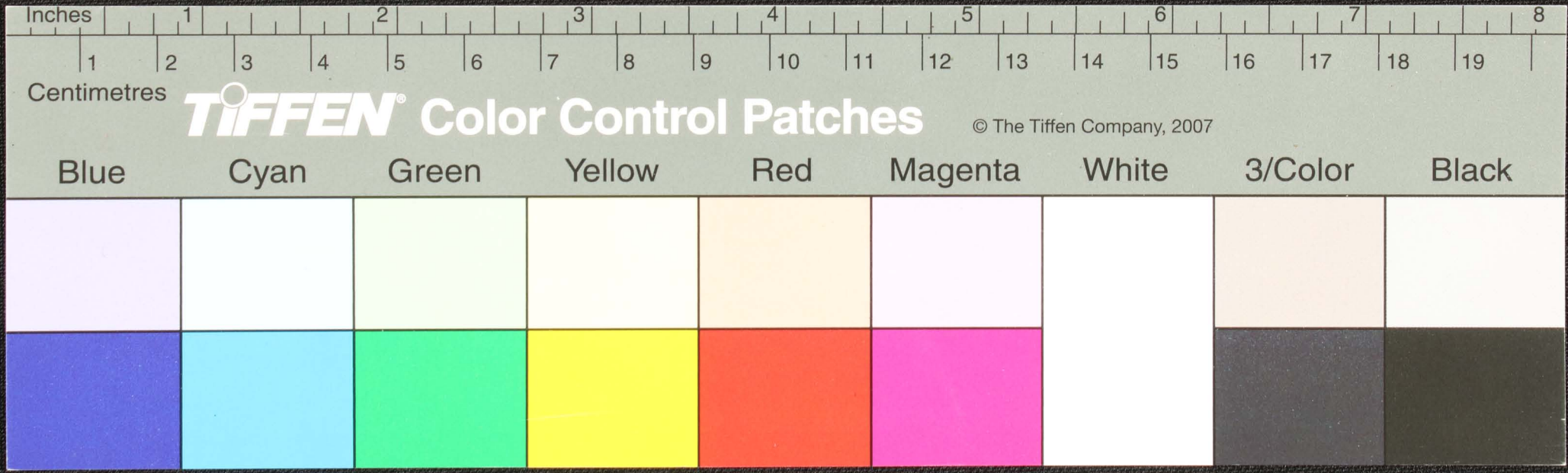


**TIFFEN** Color Control Patches

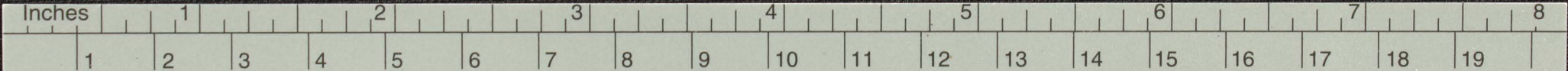
© The Tiffen Company, 2007

Blue	Cyan	Green	Yellow	Red	Magenta	White	3/Color	Black

Handwritten text in a script, possibly Telugu, on a piece of aged paper. The text is arranged in two lines. The first line contains approximately 15 characters, and the second line contains approximately 18 characters. The paper is yellowed and has a small dark spot near the center.



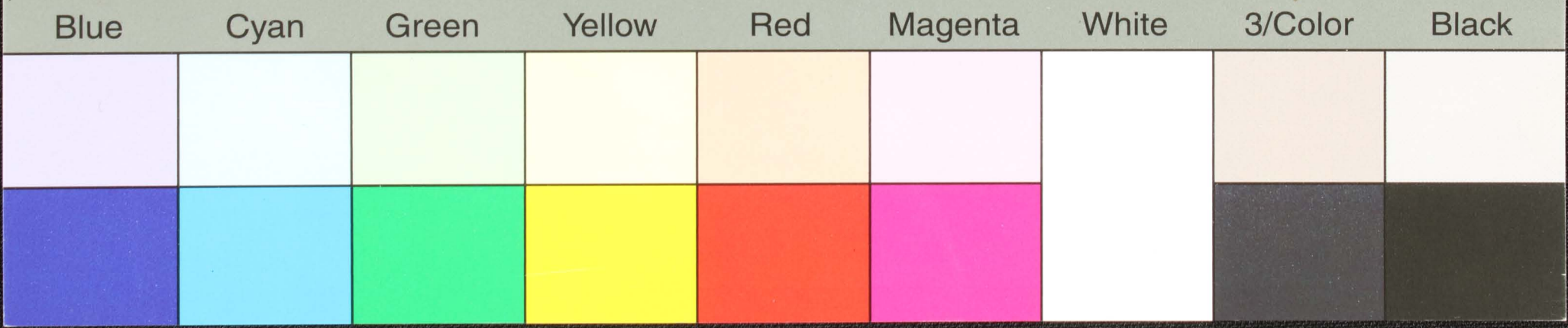
Handwritten text on a palm leaf manuscript strip, featuring several columns of script and a central circular hole. The text is written in a traditional South Indian script, likely Grantha or Tamil, and is organized into columns separated by vertical lines. The script is dark and appears to be ink or a natural dye.

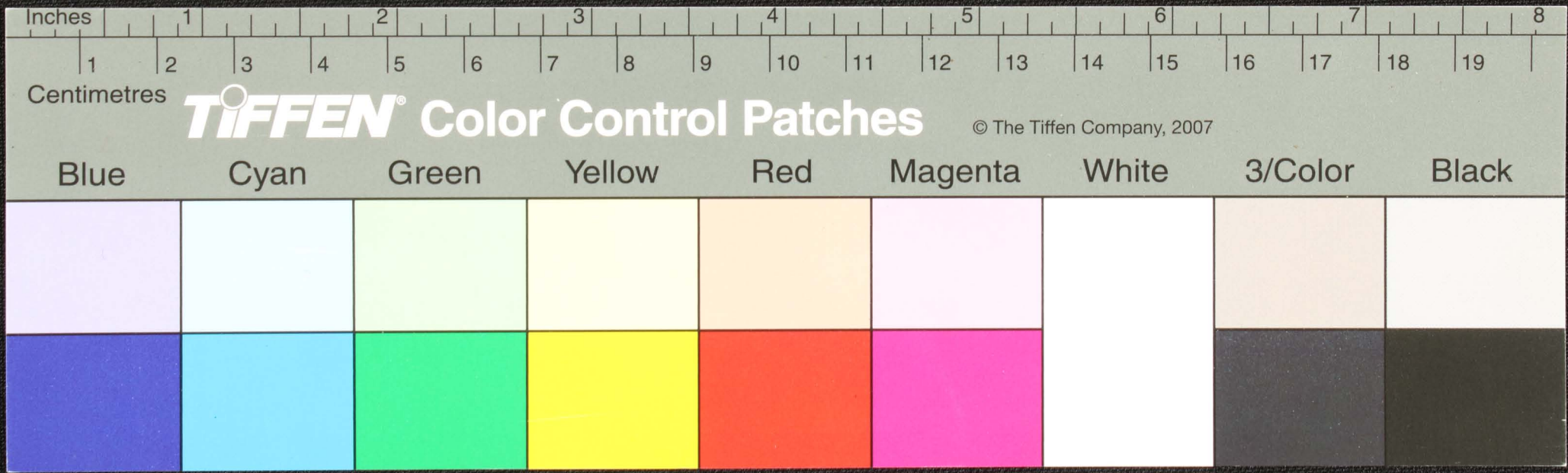


Centimetres

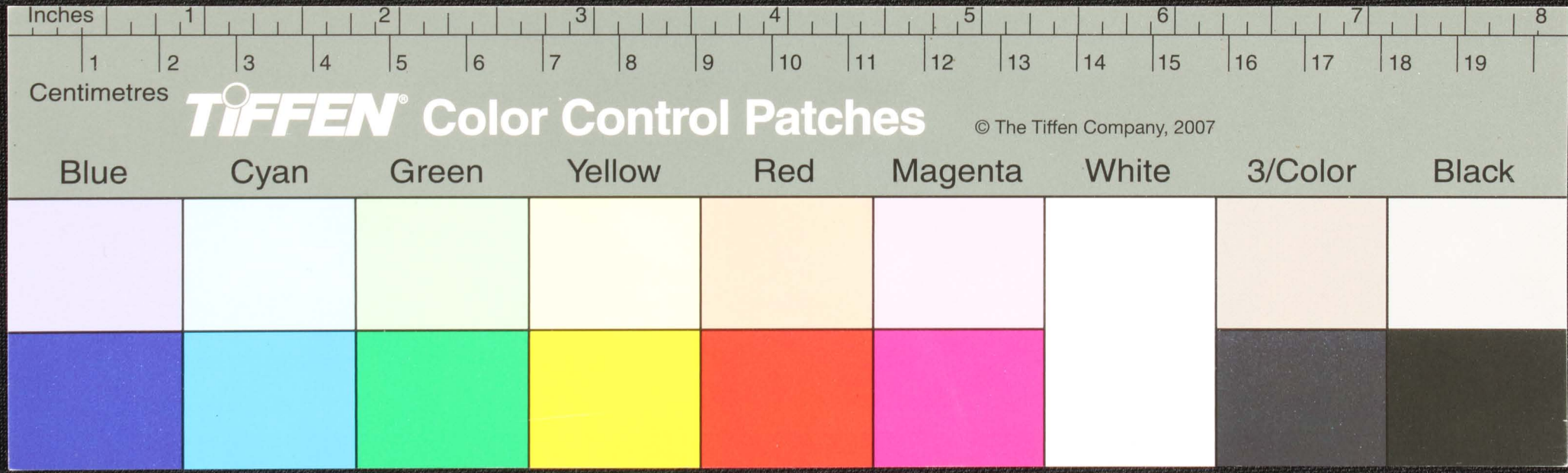
**TIFFEN** Color Control Patches

© The Tiffen Company, 2007

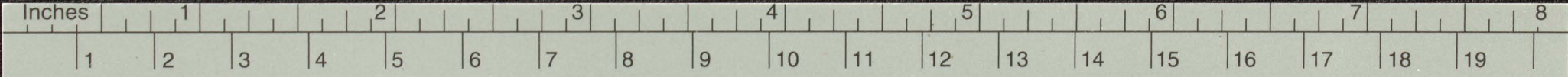




Handwritten text in an ancient script, possibly Tamil, on a palm leaf manuscript. The text is arranged in approximately 10 horizontal lines. The first line on the left contains the characters 'சொல்ல' and 'பாடி'. A small black circular mark is present in the middle of the fourth line. The script is finely etched into the surface of the dried leaf.



Handwritten text in an ancient script, possibly Tamil, on a palm leaf manuscript. The text is arranged in approximately 10 horizontal lines. The first line contains the characters 'சார்பு' and 'பாபு'. The script is densely packed and includes some circular symbols interspersed with the characters. The leaf shows signs of age, with a small dark hole and some fraying at the edges.

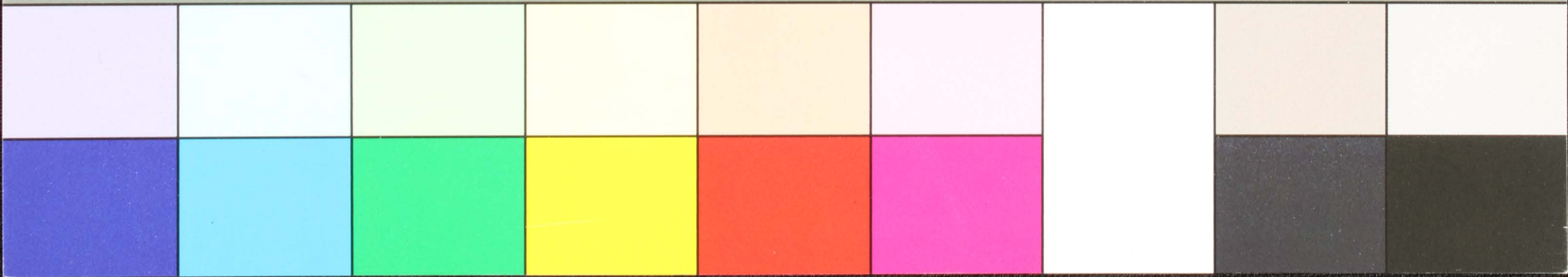


Centimetres

**TIFFEN** Color Control Patches

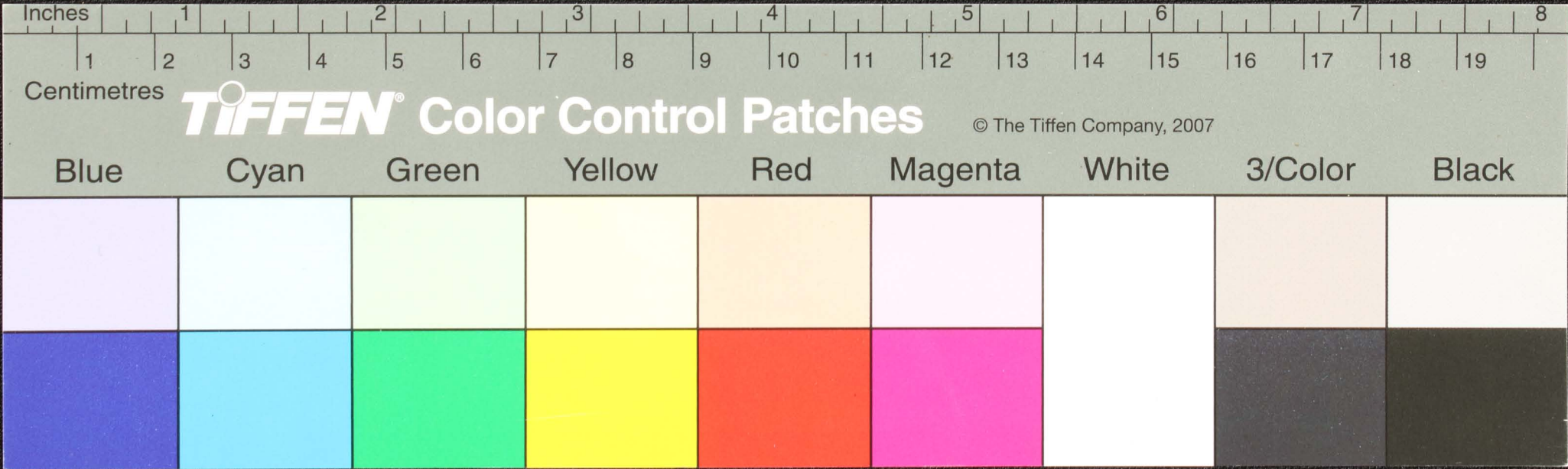
© The Tiffen Company, 2007

Blue      Cyan      Green      Yellow      Red      Magenta      White      3/Color      Black



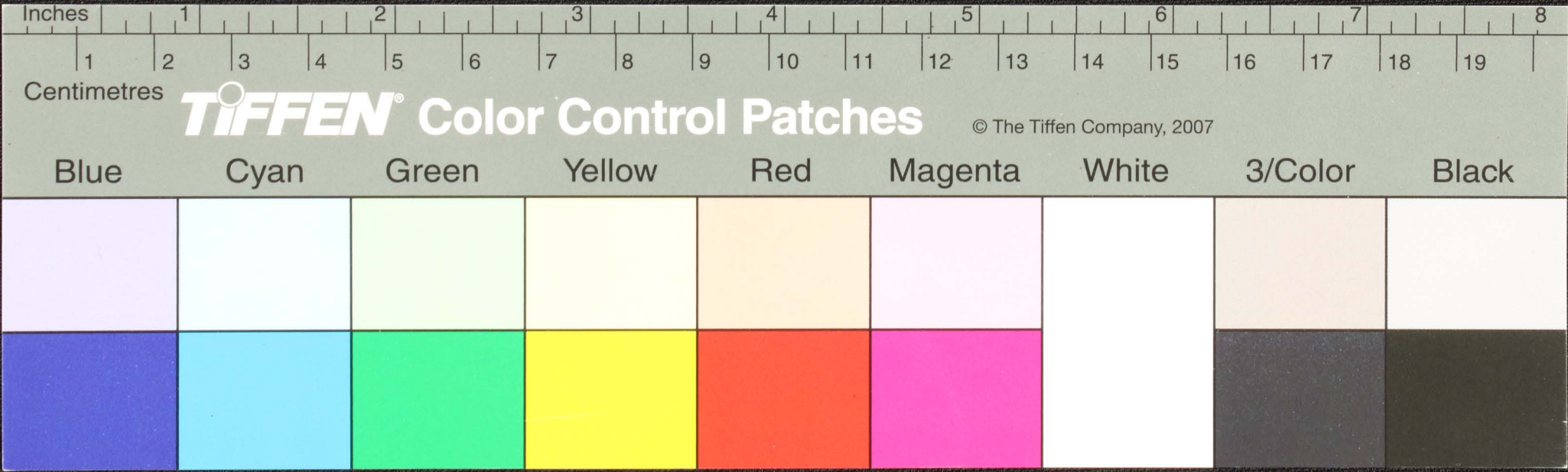


Handwritten text in an ancient script, possibly Tamil, on a palm leaf manuscript. The text is arranged in approximately 10 horizontal lines. The script is finely etched into the surface of the dried leaf. A small circular hole is visible near the center of the leaf, which is a traditional feature for threading a cord to bind multiple leaves together. The leaf shows signs of age, including some fraying at the edges and a dark spot near the hole.

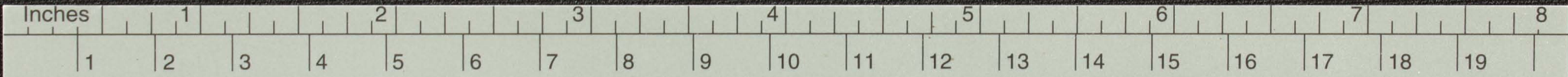




Handwritten text on a palm leaf manuscript strip, consisting of approximately 10 lines of script. The text is written in a dark ink and is partially obscured by a small black circular mark near the center. The script appears to be a form of South Asian or Southeast Asian writing, possibly Tamil or Grantha. The leaf is aged and shows some wear and tear at the edges.



Handwritten text in an ancient script, possibly Tamil, on a palm leaf manuscript. The text is arranged in approximately 10 horizontal lines. A small circular hole is visible in the center of the leaf, used for threading a cord to bind multiple leaves together. The script is dark and appears to be inscribed or etched into the surface of the dried leaf.



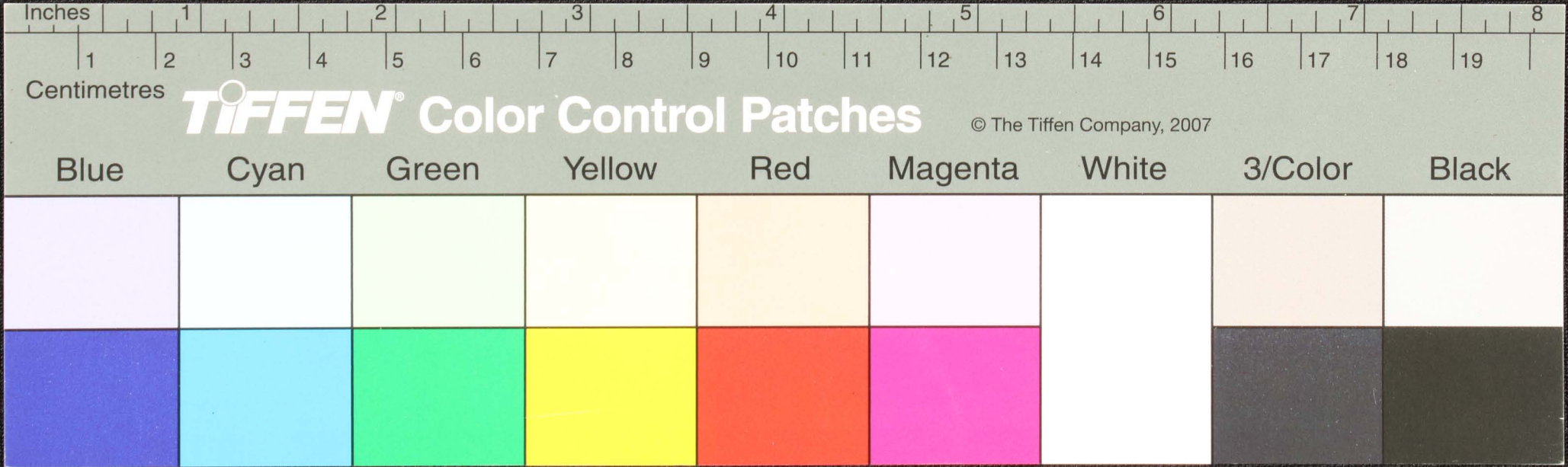
Centimetres

# TIFFEN® Color Control Patches

© The Tiffen Company, 2007

Blue	Cyan	Green	Yellow	Red	Magenta	White	3/Color	Black

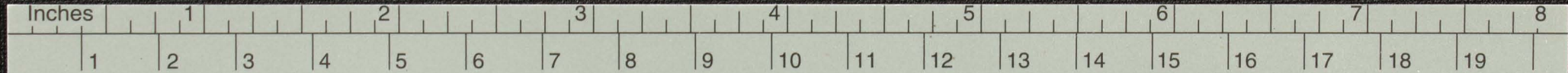
Handwritten text in Tamil script on a palm leaf manuscript. The text is arranged in several lines, with some characters circled in red ink. A small black circular mark is visible in the middle of the second line. The leaf is aged and has a slightly irregular shape.



Handwritten text on the left side of the palm leaf manuscript, including a double-lined underlined section.

Handwritten text in the middle section of the palm leaf manuscript, featuring a central circular hole.

Handwritten text on the right side of the palm leaf manuscript.



Centimetres

# TIFFEN® Color Control Patches

© The Tiffen Company, 2007

Blue

Cyan

Green

Yellow

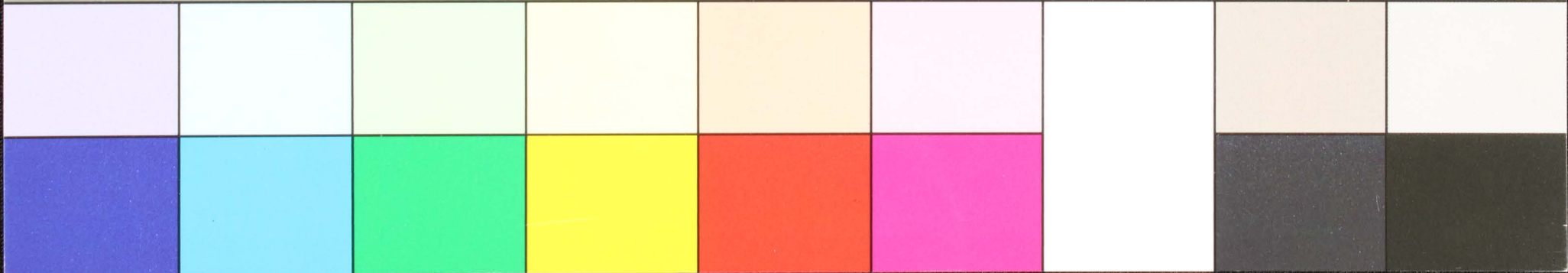
Red

Magenta

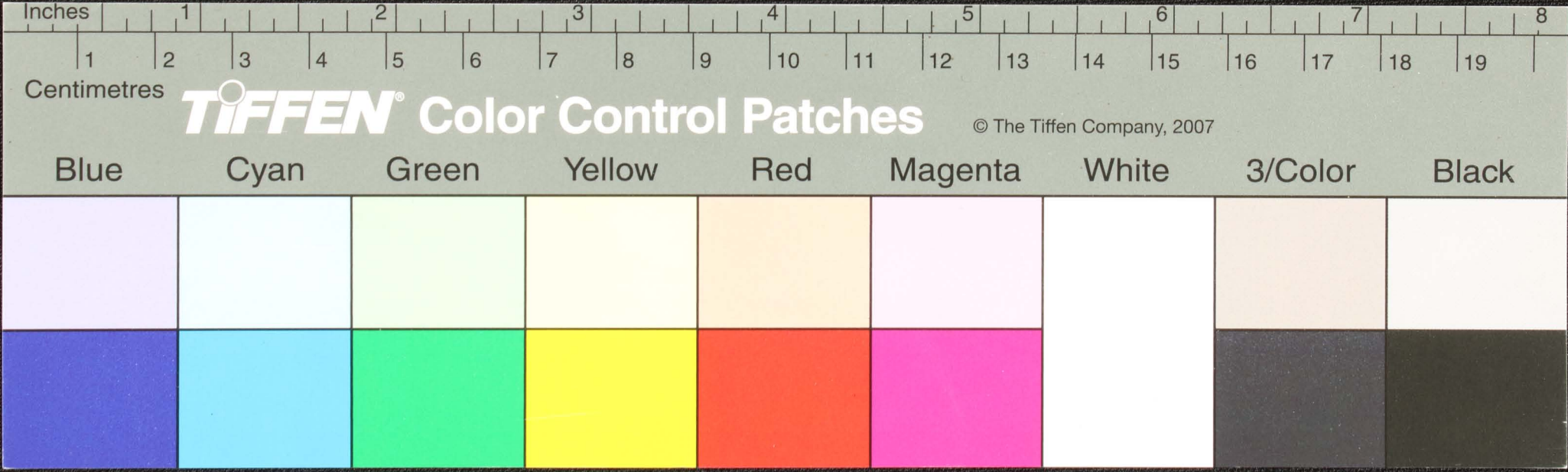
White

3/Color

Black



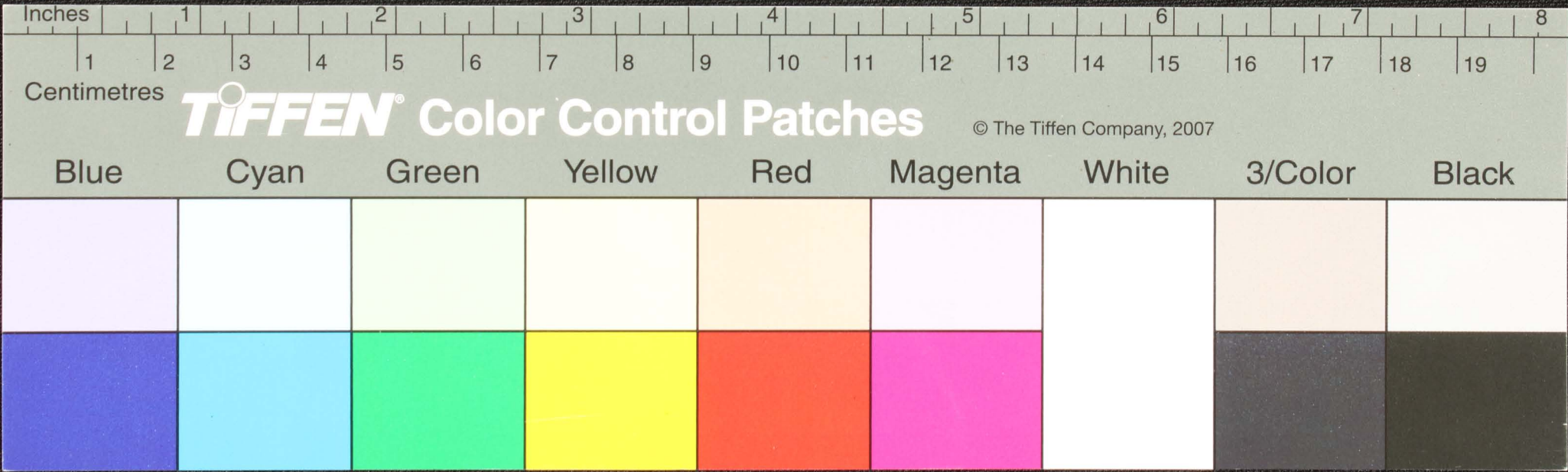
Handwritten text in Tamil script on a palm leaf manuscript. The text is arranged in approximately five horizontal lines. The script is finely etched into the surface of the leaf. A small circular hole is visible in the center of the leaf, which is a traditional feature used for threading a cord to bind multiple leaves together into a book format.

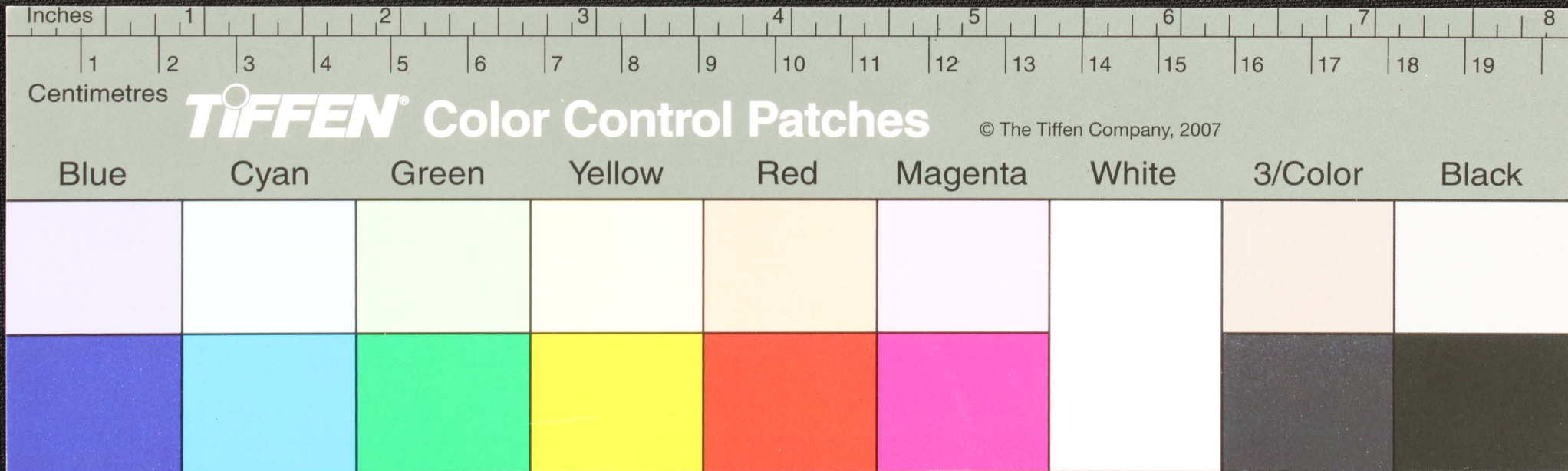




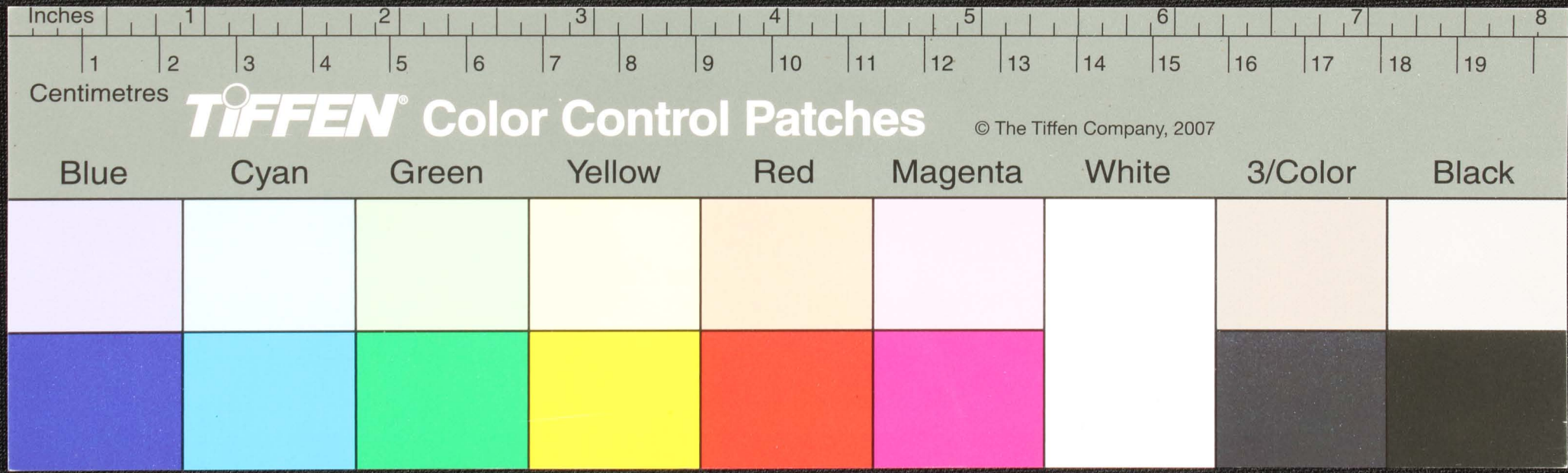


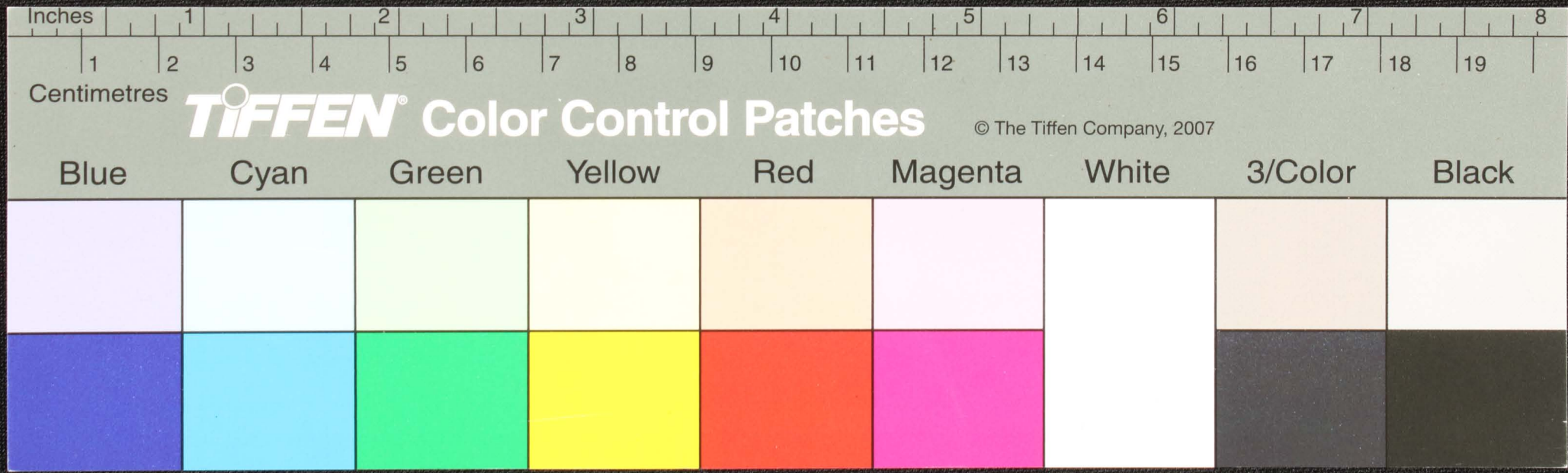
Handwritten text in Tamil script on a palm leaf manuscript. The text is arranged in approximately 10 horizontal lines. The script is densely packed and includes various characters, some of which are circled or underlined. A small circular hole is visible near the center of the leaf, used for binding multiple leaves together.





Handwritten text on a piece of aged paper, possibly a manuscript or document. The text is written in a cursive script and is mostly illegible due to fading and the angle of the paper. Some words are circled in red ink. The paper is yellowed and has a small hole near the center.





Inches

Centimetres

**TIFFEN** Color Control Patches

© The Tiffen Company, 2007

Blue

Cyan

Green

Yellow

Red

Magenta

White

3/Color

Black

1000000  
S H N AT

DB



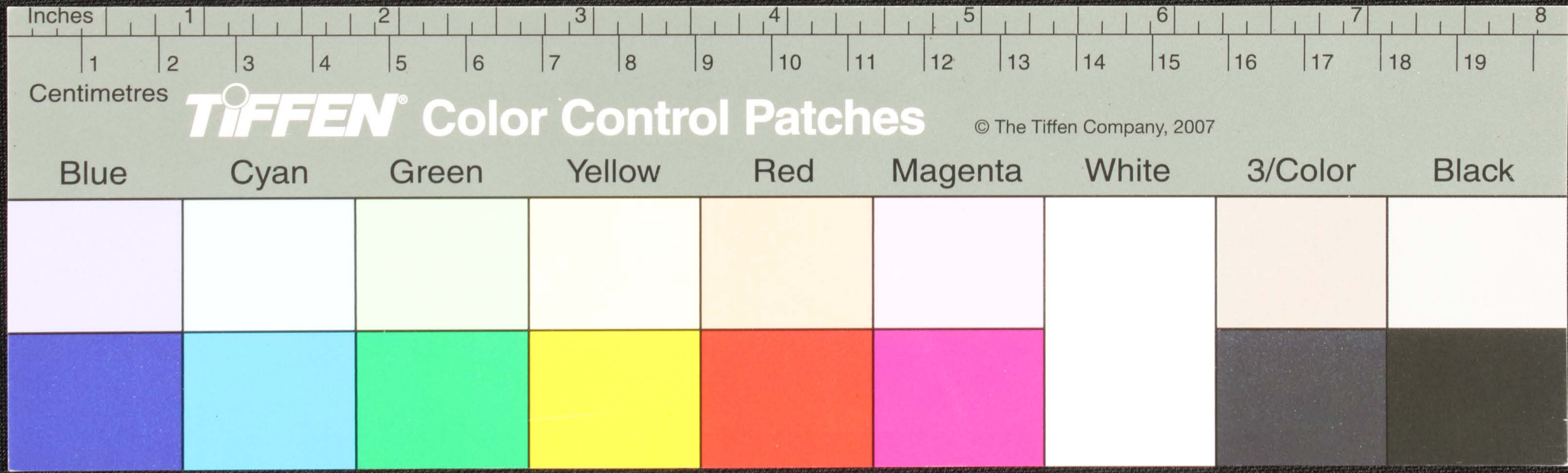
Inches 1 2 3 4 5 6 7 8  
Centimetres 1 2 3 4 5 6 7 8 9 10 11 12 13 14 15 16 17 18 19

**TIFFEN** Color Control Patches

© The Tiffen Company, 2007

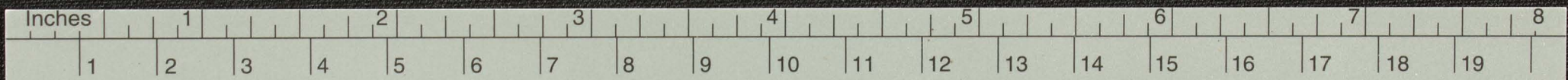
Blue	Cyan	Green	Yellow	Red	Magenta	White	3/Color	Black

Handwritten text in an ancient script, possibly Tamil, on a palm leaf manuscript. The text is arranged in several lines across the length of the leaf. A small black circular mark is visible near the center of the leaf.



Handwritten text on the left side of the wooden strip, possibly including a date or identification number.

Handwritten initials or a signature on the left side of the wooden strip.



Centimetres

**TIFFEN** Color Control Patches

© The Tiffen Company, 2007

Blue

Cyan

Green

Yellow

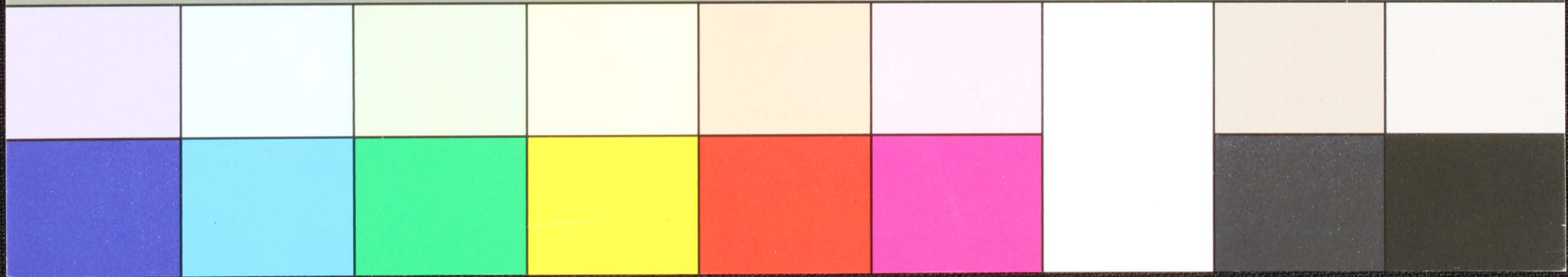
Red

Magenta

White

3/Color

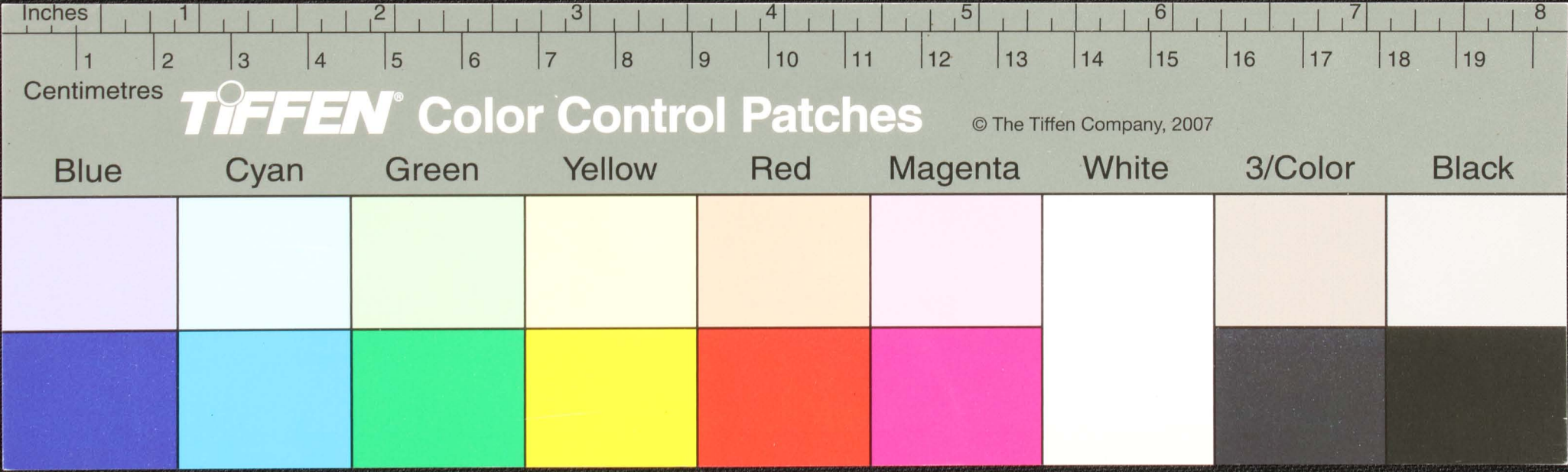
Black











Inches

1 2 3 4 5 6 7 8 9 10 11 12 13 14 15 16 17 18 19 8

Centimetres

**TIFFEN** Color Control Patches

© The Tiffen Company, 2007

Blue

Cyan

Green

Yellow

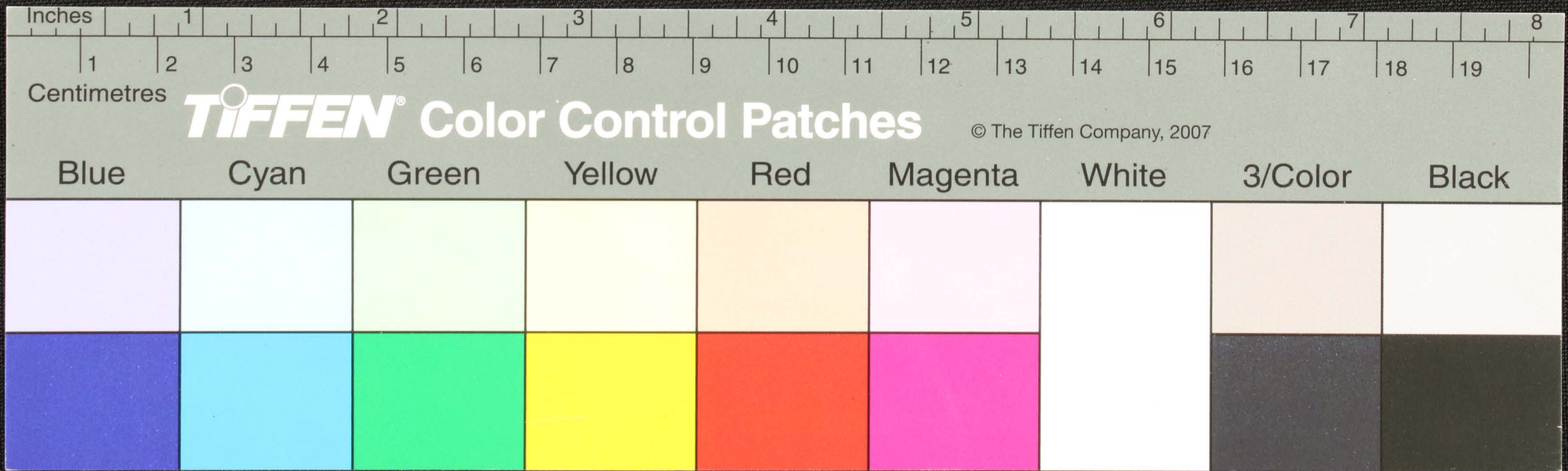
Red

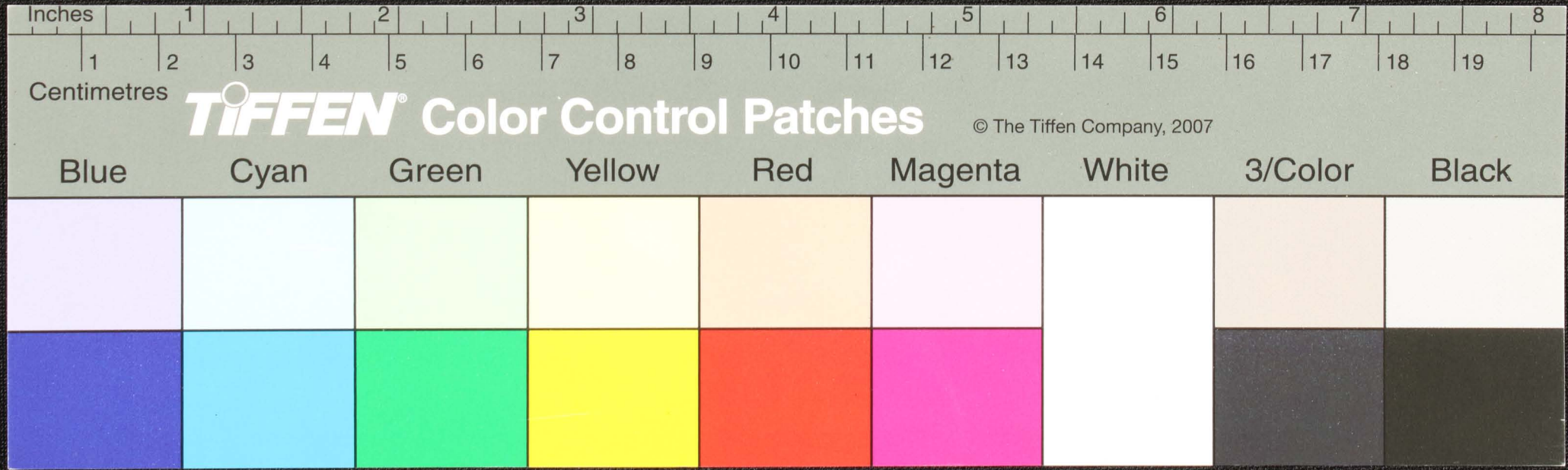
Magenta

White

3/Color

Black





Inches

1

2

3

4

5

6

7

8

Centimetres

1

2

3

4

5

6

7

8

9

10

11

12

13

14

15

16

17

18

19

**TIFFEN® Color Control Patches**

© The Tiffen Company, 2007

Blue

Cyan

Green

Yellow

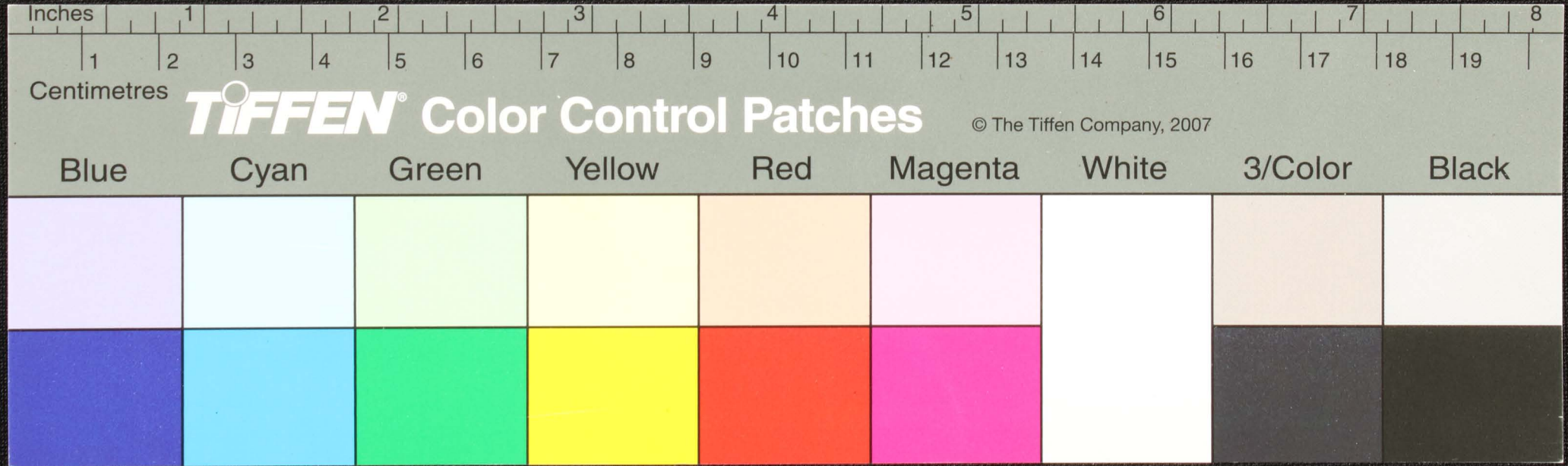
Red

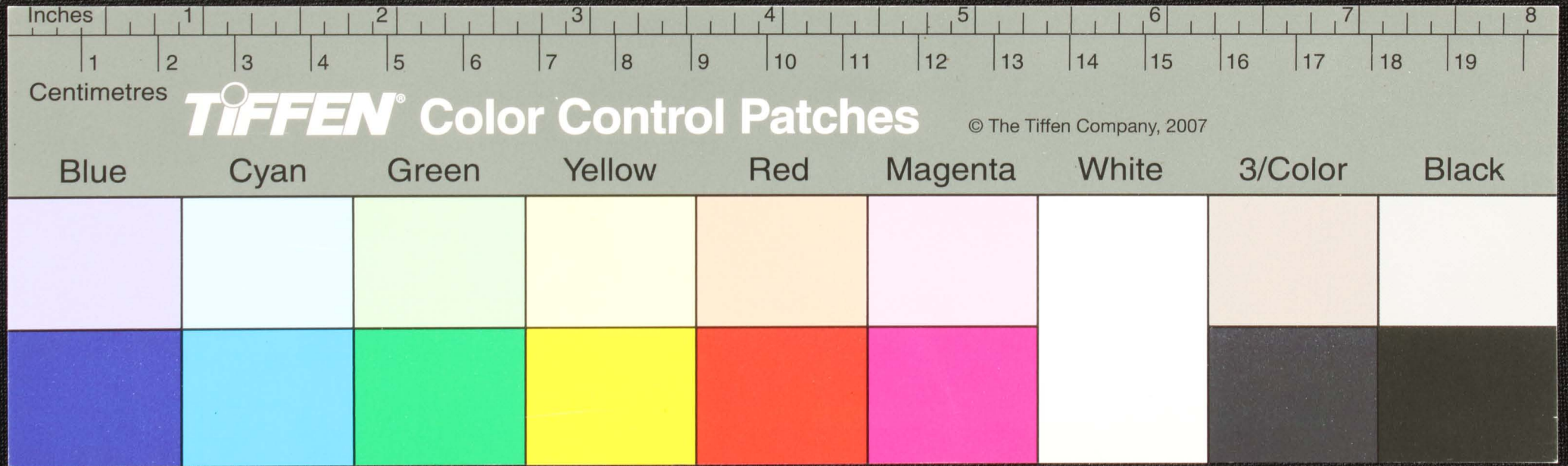
Magenta

White

3/Color

Black

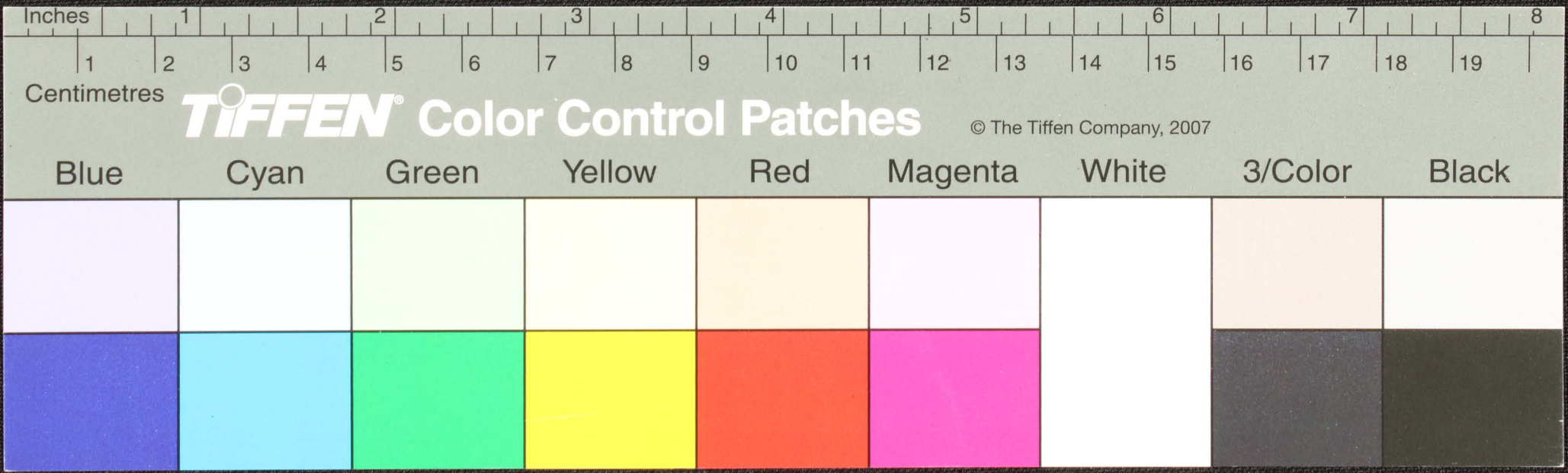




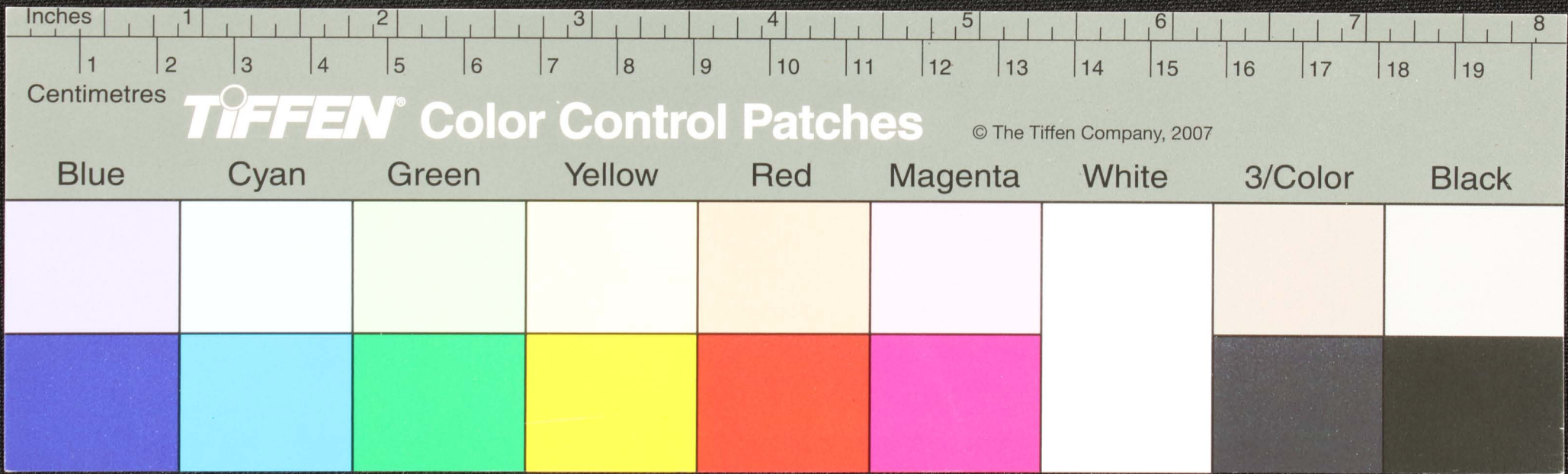
Handwritten text on a palm leaf manuscript strip, including a central diagram and several lines of script.

~~~~

The text is written in a script that appears to be Tamil or a similar South Asian script. It is arranged in several lines, with some characters underlined. A small black dot is visible on the left side of the strip.

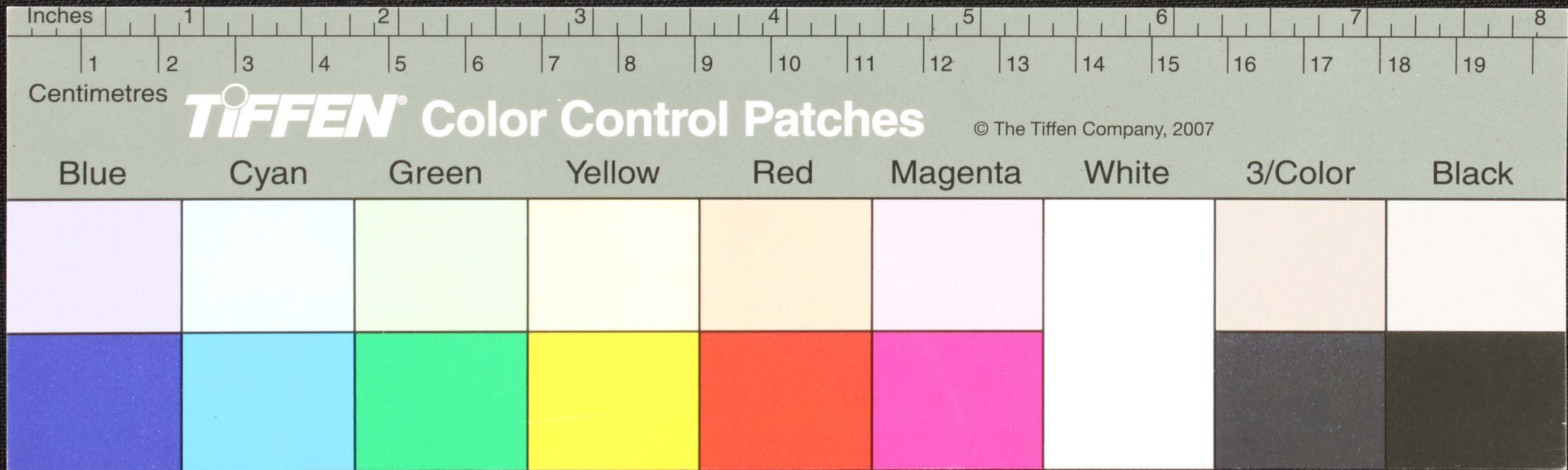


Handwritten text in an ancient script, possibly Linear A or B, on a palm-leaf manuscript. The text is arranged in approximately five horizontal lines. A prominent dark circular hole is visible in the center of the leaf, which was traditionally used for threading a cord to bind multiple leaves together. The script consists of small, stylized characters, some of which are enclosed in circles.

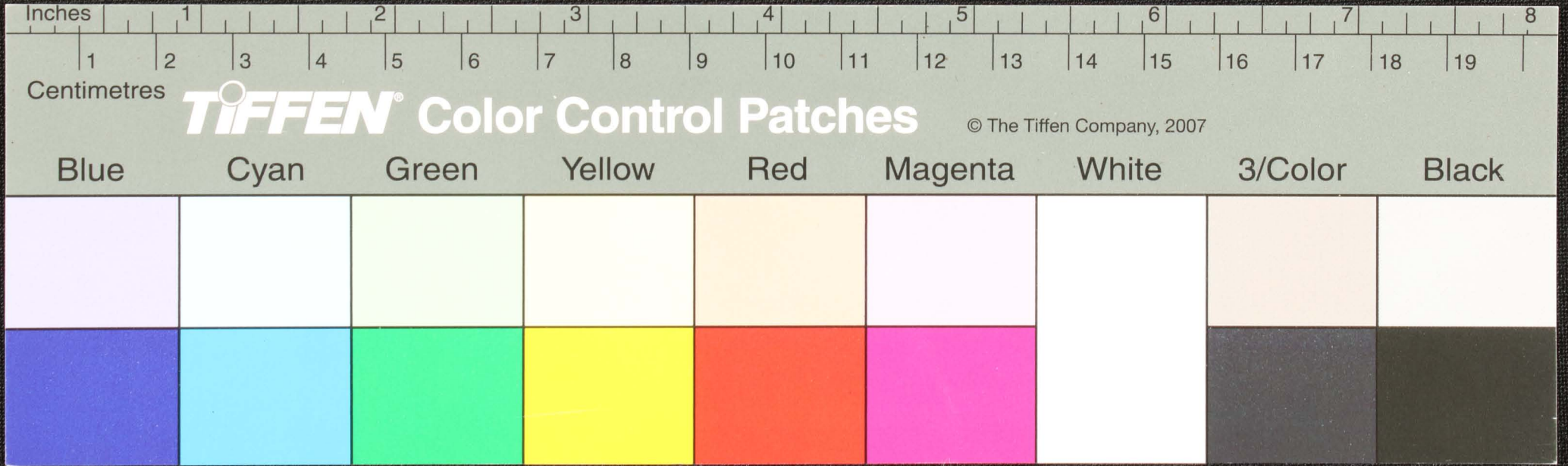




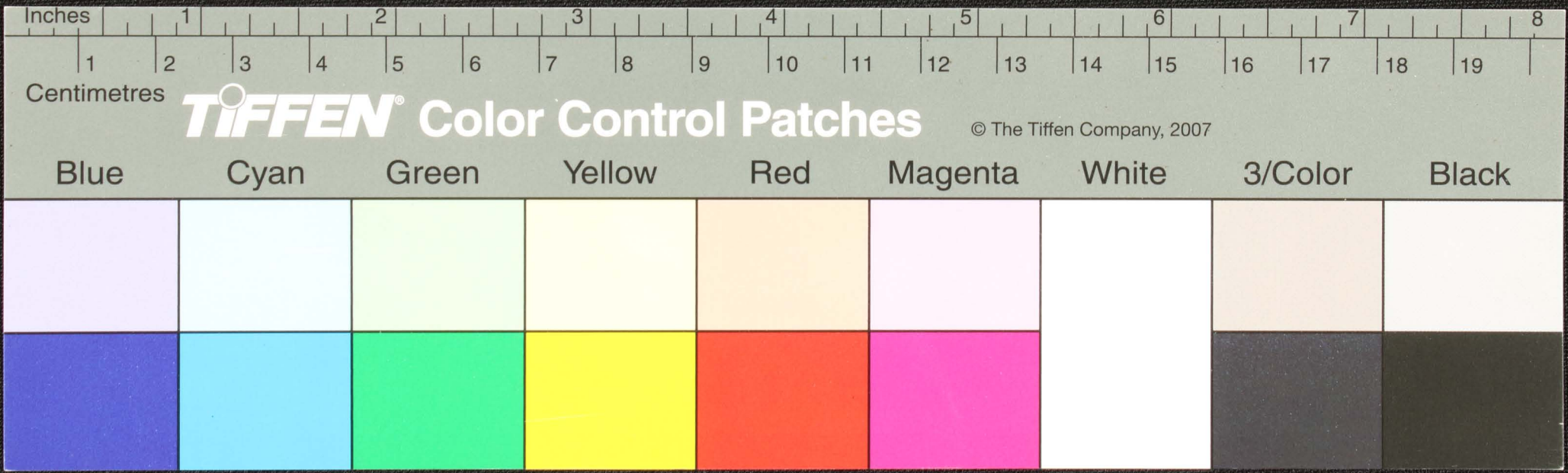
Handwritten text in an ancient script, likely Tamil, on a palm leaf manuscript. The text is arranged in approximately 10 horizontal lines across the length of the leaf. A small circular hole is visible near the center of the leaf, used for threading a cord to bind multiple leaves together.



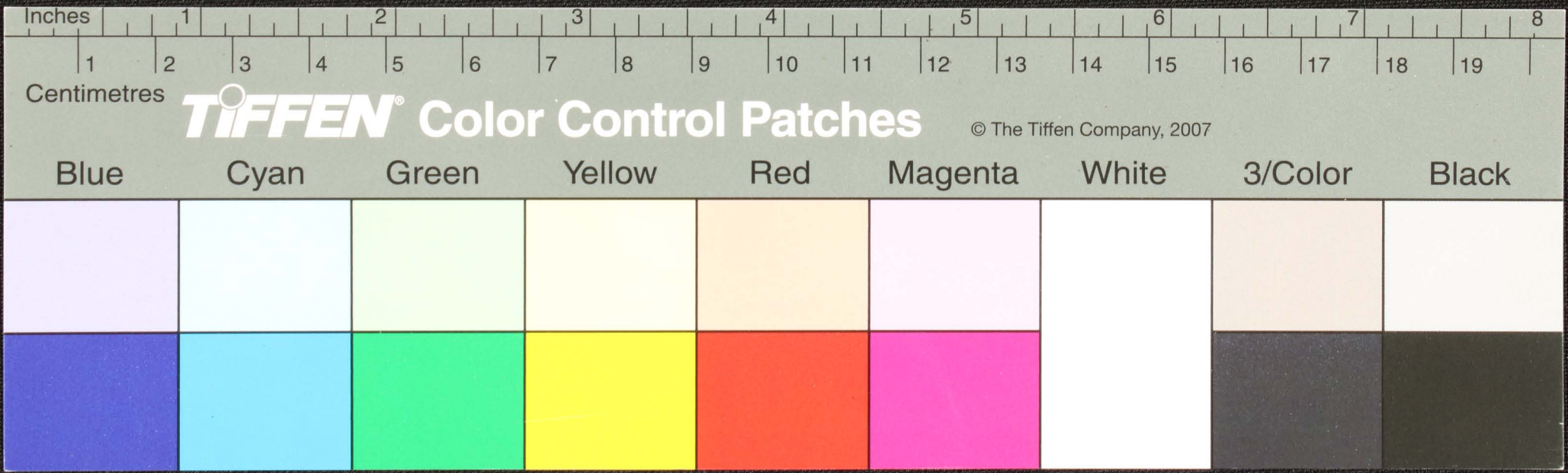
Handwritten text in an ancient script, likely Tamil, inscribed on a palm leaf. The text is arranged in approximately five horizontal lines. A prominent circular hole is visible in the center of the leaf, which is a traditional feature used for threading a cord to bind multiple leaves together into a book format.



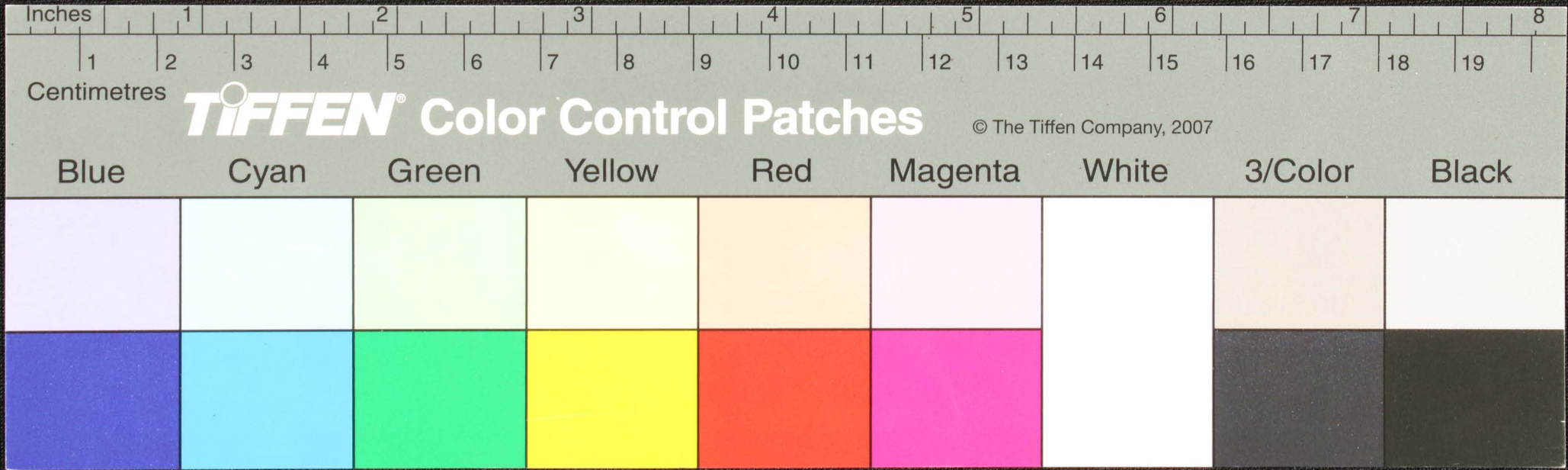
Handwritten text in Tamil script on a palm leaf manuscript. The text is arranged in approximately 10 horizontal lines across the length of the leaf. A small, dark circular hole is visible near the center of the leaf, which is a traditional feature used for threading a cord to bind multiple leaves together. The script is finely etched into the surface of the dried leaf.



Handwritten text in an ancient script, possibly Tamil, on a palm leaf manuscript. The text is arranged in approximately 10 horizontal lines across the length of the leaf. A small, dark circular hole is visible near the center of the leaf, which is a traditional feature for threading a cord to bind multiple leaves together.

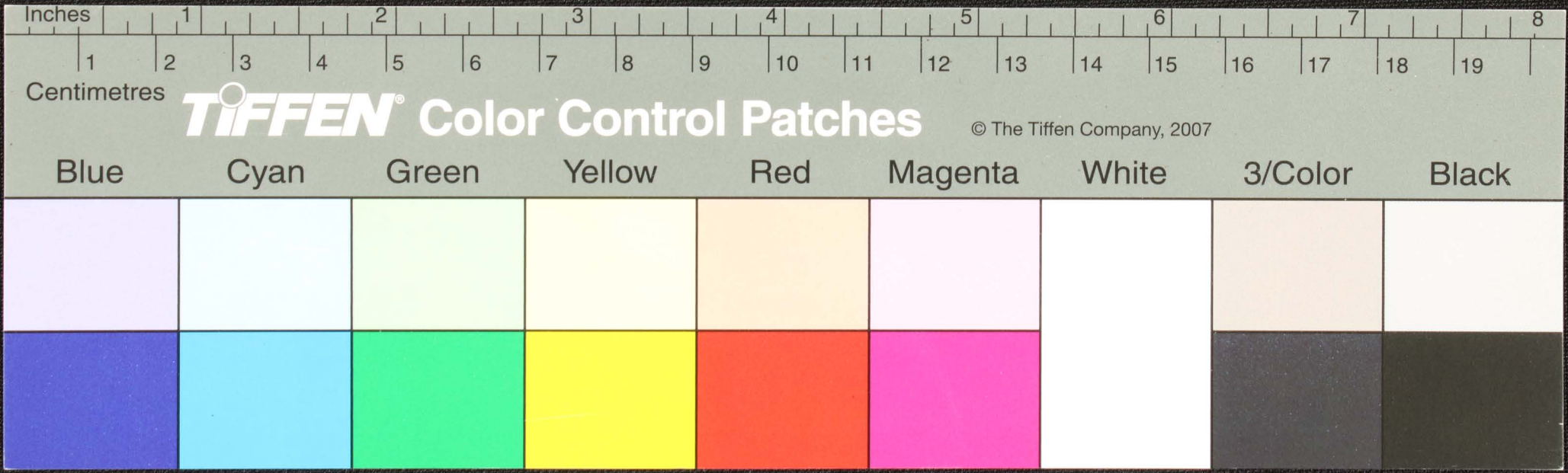


Handwritten text in an ancient script, possibly Tamil, on a palm leaf. The text is arranged in approximately five horizontal lines. A small circular hole is visible in the center of the leaf, which is a traditional feature for threading a cord to bind multiple leaves together into a book format.

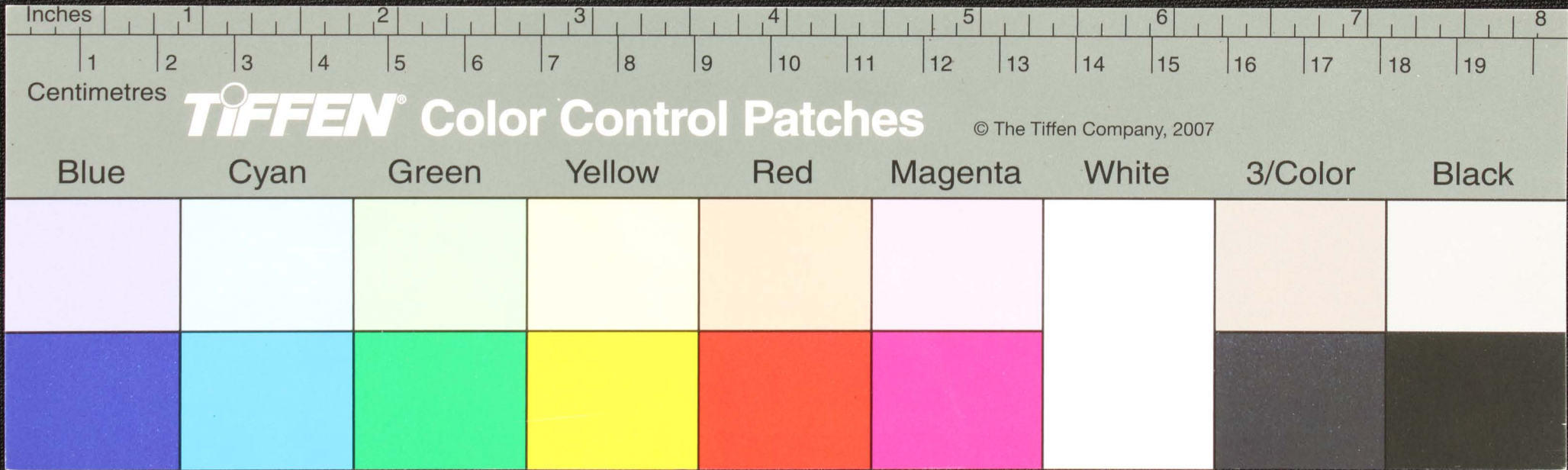




Handwritten text in Tamil script on a palm leaf manuscript. The text is arranged in approximately 10 horizontal lines. A small circular hole is visible in the center of the leaf, used for binding multiple leaves together. The script is finely etched into the surface of the dried leaf.

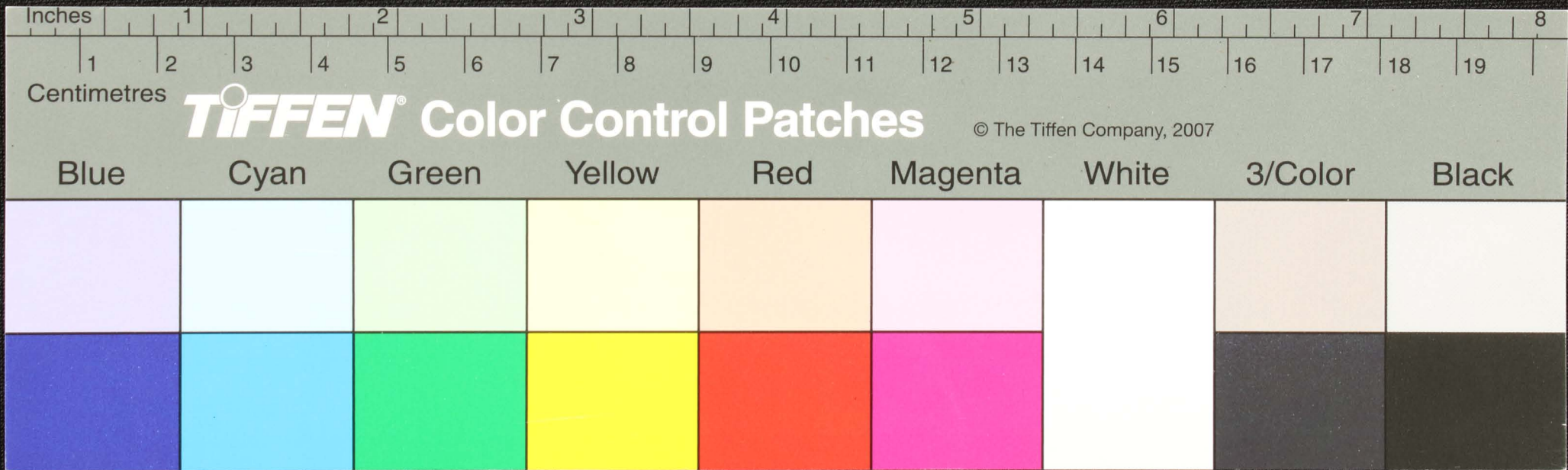


Handwritten text in an ancient script, possibly Tamil, on a palm leaf manuscript. The text is arranged in approximately 10 horizontal lines across the length of the leaf. A small circular hole is visible near the center of the leaf, used for binding multiple leaves together.

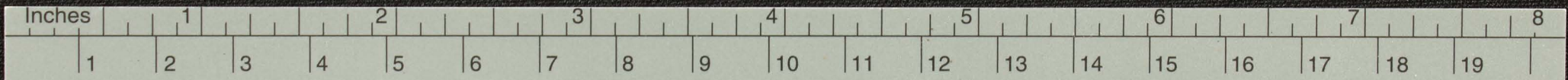




Handwritten text on a palm leaf manuscript strip, featuring several lines of script and a central diagram. The diagram consists of a central diamond shape with internal lines and surrounding text. The script is a form of South Indian writing, possibly Grantha or Tamil, and includes some numbers and symbols.



Handwritten text in an ancient script, possibly Tamil, on a palm leaf manuscript. The text is arranged in approximately five horizontal lines. A small black circular mark is present in the center of the second line.

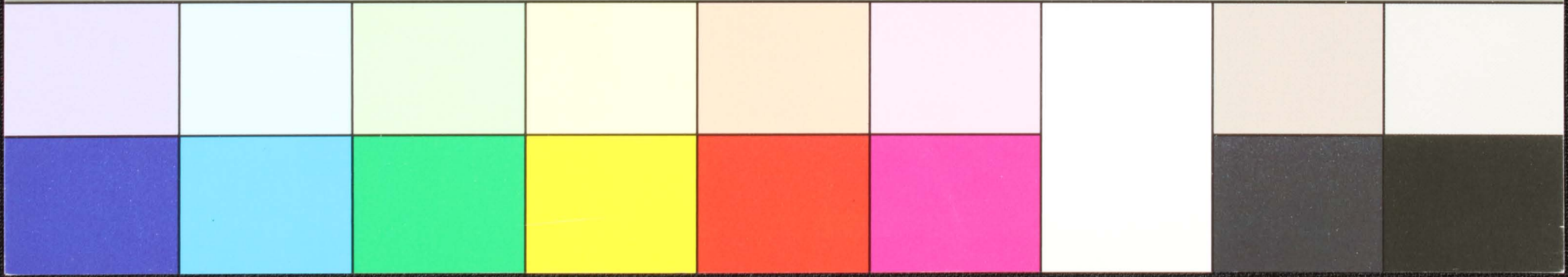


Centimetres

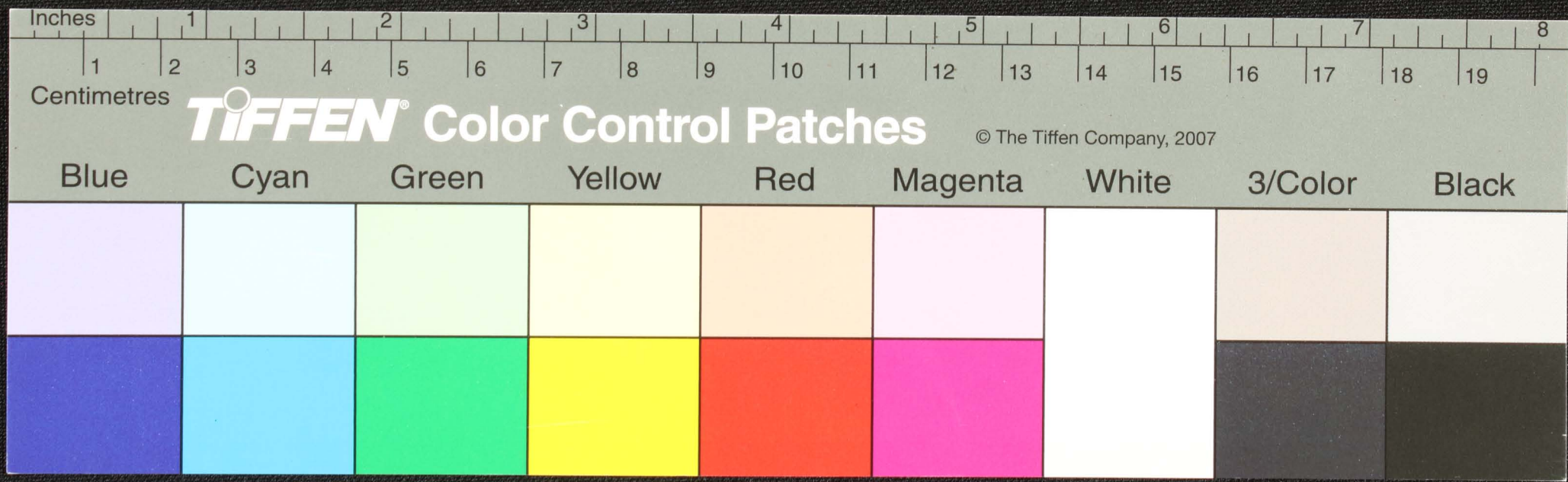
# TIFFEN® Color Control Patches

© The Tiffen Company, 2007

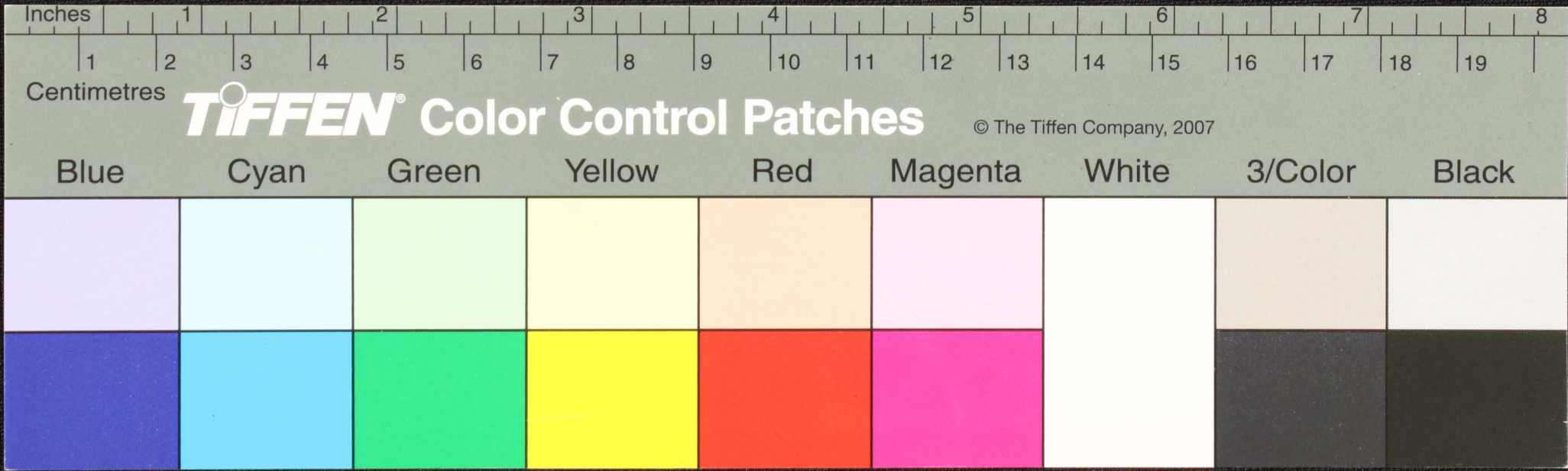
Blue      Cyan      Green      Yellow      Red      Magenta      White      3/Color      Black



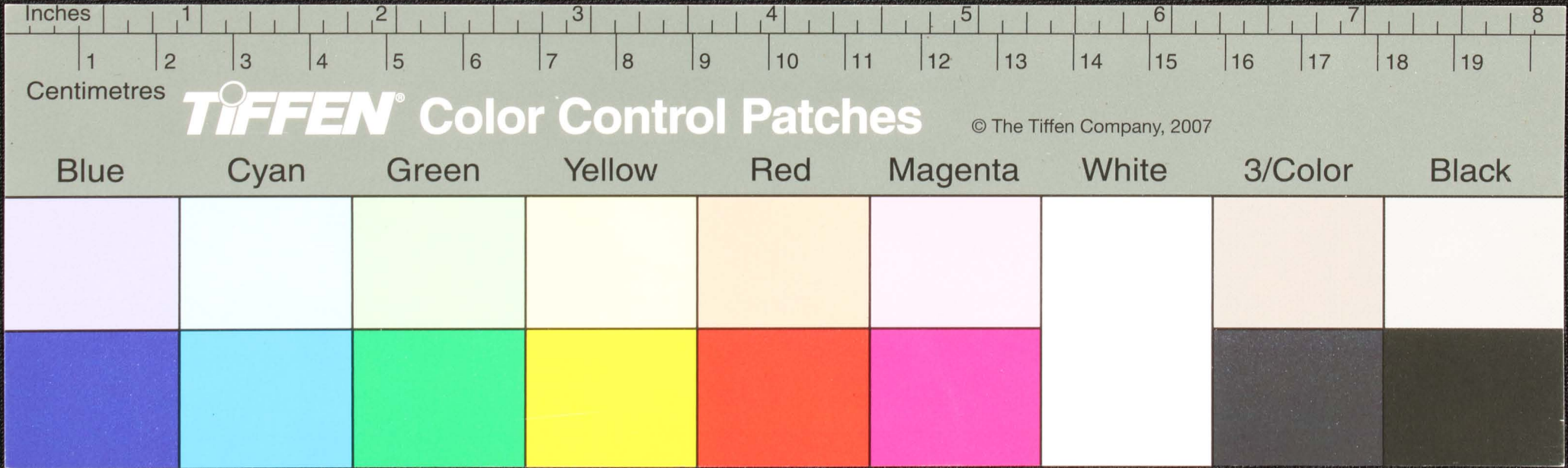
Handwritten text in an ancient script, possibly Tamil, on a palm leaf manuscript. The text is arranged in approximately 10 horizontal lines. A small circular hole is visible in the center of the leaf, used for threading a cord to bind multiple leaves together. The script is finely etched into the surface of the dried leaf.



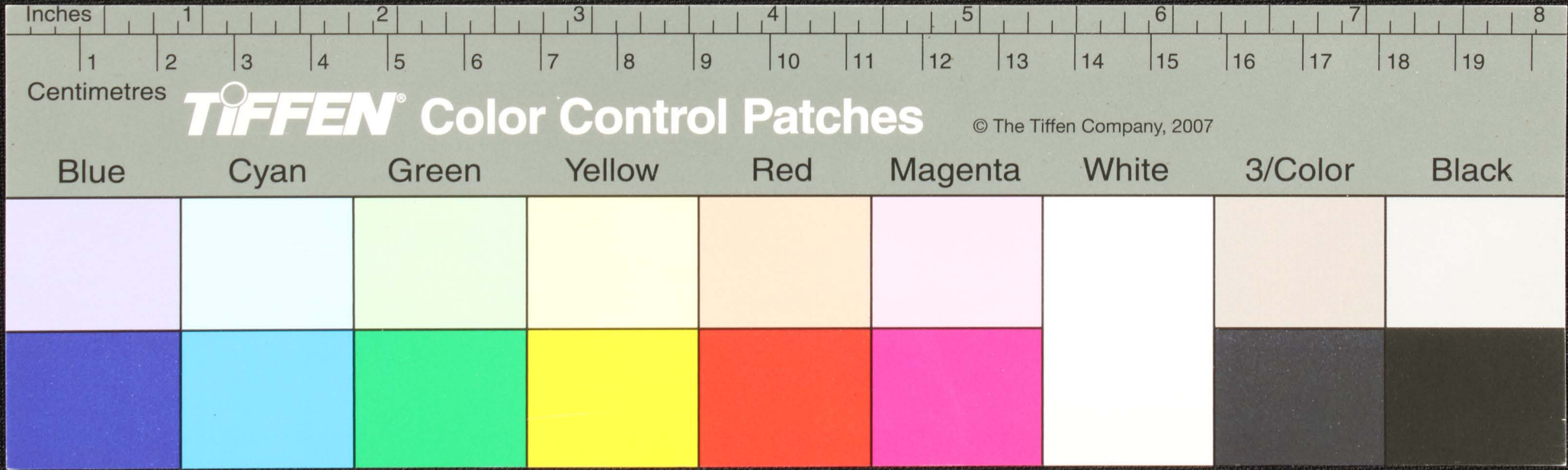
Handwritten text in an ancient script, possibly Tamil, on a palm leaf. The text is arranged in approximately five horizontal lines. A small, dark circular mark is visible on the leaf, located roughly in the middle of the second line from the top.



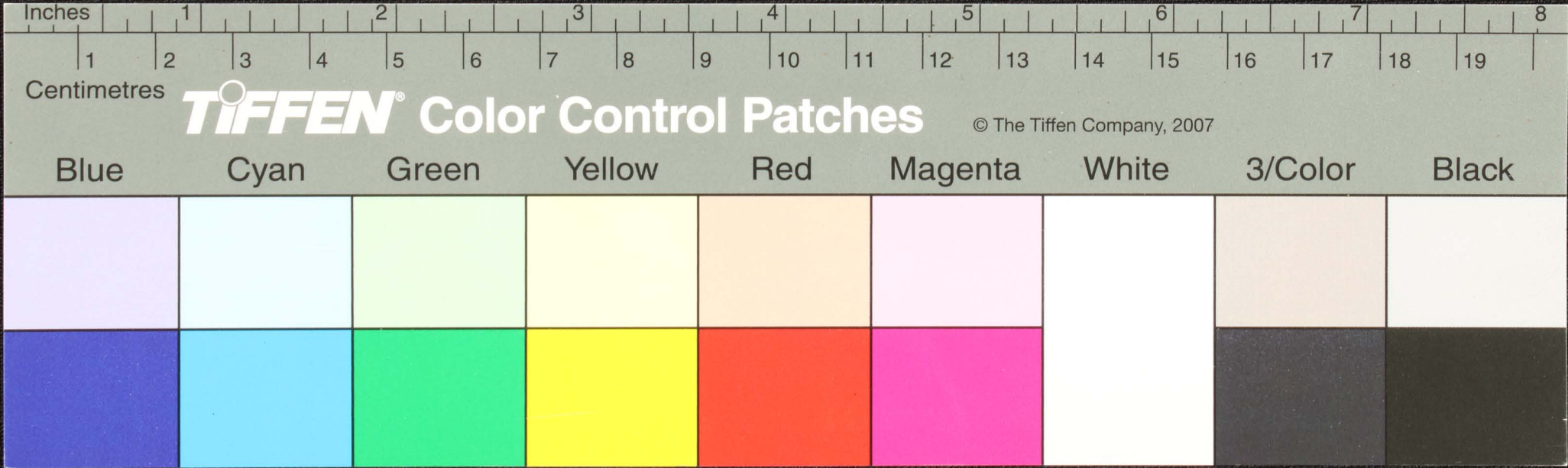
Handwritten text in an ancient script, likely Tamil, on a palm leaf manuscript. The text is arranged in approximately 10 horizontal lines across the length of the leaf. A small circular hole is visible near the center of the leaf, used for threading a cord to bind multiple leaves together.



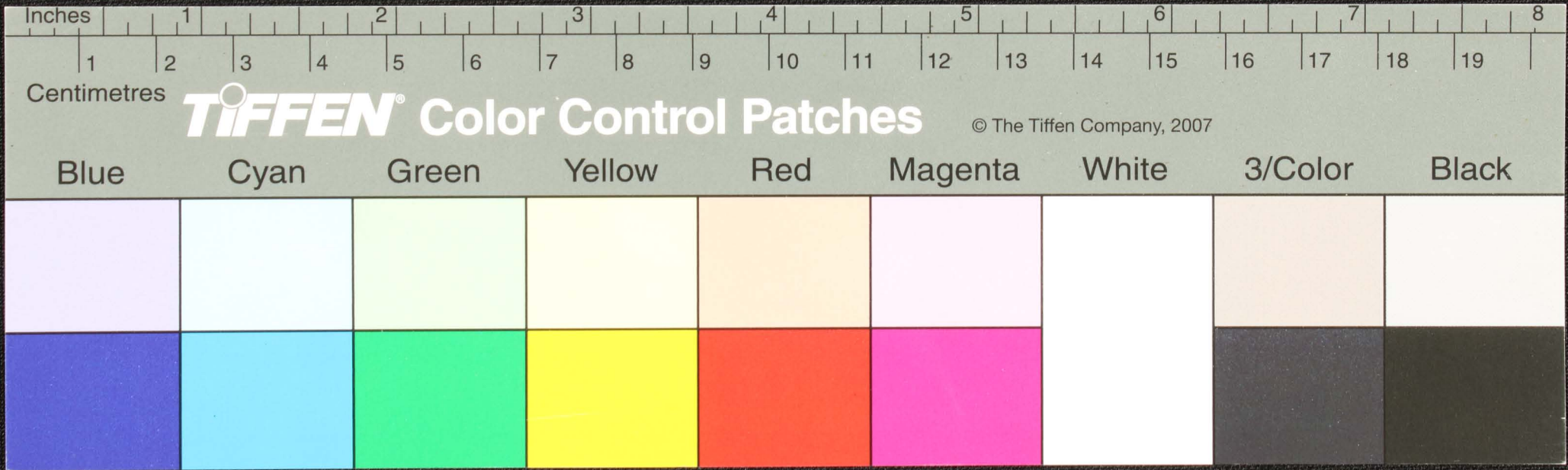
Handwritten text in an ancient script, likely Tamil, on a palm leaf manuscript. The text is arranged in approximately 10 horizontal lines across the length of the leaf. A small, dark circular hole is visible near the center of the leaf, which is a traditional feature for threading a cord to bind multiple leaves together.



Handwritten text in Tamil script on a palm leaf manuscript. The text is arranged in approximately 10 horizontal lines across the length of the leaf. A small circular hole is visible near the center of the leaf, which is a traditional feature for threading a cord to bind multiple leaves together.



Handwritten text in an ancient script, possibly Linear B, on a yellowish-brown strip of material. The text is arranged in approximately five horizontal lines. A small black circular mark is present on the strip, located roughly in the middle of the second line from the top.





Handwritten text in an ancient script, possibly Tamil, on a palm leaf manuscript. The text is arranged in approximately three horizontal lines. A small circular hole is visible in the center of the leaf, used for threading a cord to bind multiple leaves together. The script is finely etched into the surface of the dried leaf.

