

Ceylon Government Gazette

Published by Authority.

No. 5,668—FRIDAY, DECEMBER 29, 1899.

PART I.—General: Minutes, Proclamations, Appointments, and General Government Notifications.
PART II.—Legal and Judicial.

PART III.—Provincial Administration.
PART IV.—Marine and Mercantile.
PART V.—Municipal and Local.

Separate paging is given to each Part in order that it may be filed separately.

Part IV.—Marine and Mercantile.

	PAGE		PAGE
Notices to Mariners	... 247	Railway Traffic Returns	... 248
Notifications of Quarantine	... —	Trade Marks Notifications	... —
Returns of Imports, Exports, and Bonded Goods	... 250		

NOTICES TO MARINERS.

HIS EXCELLENCY THE GOVERNOR has been pleased to direct that the following Notices to Mariners be published for general information.

By His Excellency's command,

E. NOEL WALKER,
Colonial Secretary.

Colonial Secretary's Office,
Colombo, December 13, 1899.

BENGAL.—No. 230.

*Eastern Archipelago—Philippine Islands—Luzon—
Reef extending from Cape Bojeador.*

The British Admiralty has given notice (No. 684 of 1899) that on June 19, 1899, the ss. Centennial when about 2 miles west of Cape Bojeador lighthouse, Luzon, struck on a reef, the depth obtained forward being 16 ft. and aft 23 ft. At 20 yards westward of the vessel there was a depth of 5 fathoms, and between the ship and the shore 3 to 4 fathoms.

As Cape Bojeador is reported to be surrounded by a reef, the above reef has been extended on the Charts for about 2 miles to the northward and southward of the cape. Approximate position: lat. 18° 30' N., long. 120° 33' E.

Variation, nil in 1899.

247

This notice affects the following Admiralty Chart:—The Island of Luzon, No. 2,454; also China Sea Directory, 1899, vol. II., page 326; and Eastern Archipelago, Part I., 1890, pages 39, 333.

P. J. FALLE, Comdr., R.I.M.,
Port Officer of Calcutta.

Calcutta, December 1, 1899.

BENGAL.—No. 231.

Pacific Ocean—Sulu Archipelago—Rock reported North-eastward of Gujangan.

The British Admiralty has given notice (No. 685 of 1899) that the pilot at Sulu reports the existence of a rock about 3 miles north-eastward of Gujangan.

Approximate position: lat. 6° 7' N., long. 121° 18' E.

This notice affects the following Admiralty Charts:—Philippine Islands, No. 943; Sulu Archipelago, No. 2,576; Sulu Archipelago, No. 928; also Eastern Archipelago, Part I., 1890, page 113.

P. J. FALLE, Comdr., R.I.M.,
Port Officer of Calcutta.

Calcutta, December 1, 1899.

D 1

BENGAL.—No. 232.

Japan, South Coast—No Sima Saki—Shoal Water to the Eastward.

The British Admiralty has given notice (No. 690 of 1899) of the existence of the following shoal patches east of No sima saki :—

- (a) Kiukone reef has a depth of $3\frac{1}{2}$ fathoms over it at low water, and is situated with No sima saki lighthouse bearing N. 68° W., distant $1\frac{3}{4}$ mile, and Takatsuka yama (759 ft.) N. 22° E.

Approximate position : lat. $34^{\circ} 53' 35''$ N., long. $139^{\circ} 55' 0''$ E.

- (b) Hirone has a least depth of 8 fathoms over it, and is situated with No sima saki lighthouse bearing No. 58° W., distant $2\frac{1}{10}$ miles, and Takatsuka yama N. 16° E.

(2) *Kats'ura—Reefs.*

Also, of the following reefs in Kats'ura :—

- (a) Kajikakene is a pinnacle with a depth of one fathom over it at low water, and 5 to 9 fathoms on all sides of it : it is situated with the extreme of Kura ga hana bearing S. 88° W., distant $1\frac{3}{4}$ cable, and the rock, 43 ft. high (called Suzume jima), N. 4° E.

Approximate position : lat. $35^{\circ} 8' 10''$ N., long. $140^{\circ} 17' 15''$ E.

- (b) Komone, half a cable in extent S. by W. and N. by E., has a depth of $1\frac{1}{2}$ fathom over it at low water, and 4 to 7 fathoms around it : it is situated with Hachiman saki bearing N. 14° E., distant 3 cables, and Kura ga hana N. 55° W.

- (c) Dojimashi has a depth of $3\frac{3}{4}$ fathoms over it, surrounded by depths of from 7 to 8 fathoms : it is situated with the islet off Hachiman saki (called Fukushima), S. 59° E., distant $2\frac{1}{2}$ cables, and the rock, 6 ft. high (called Michiyoga), N. 11° E. There is a depth of 4 fathoms at quarter of a cable N.N.W. of the above.

Variation, 4° westerly in 1899.

This notice affects the following Admiralty Charts :—
Kii channel to Yedo, No. 996 ; Gulf of Yedo, No. 2,657 ;
Plan of Kats'ura on Sheet 208 ; also China Sea Directory, vol. IV., 1894, pages 312, 321.

P. J. FALLE, Comdr., R.I.M.,
Port Officer of Calcutta.

Calcutta, December 1, 1899.

BENGAL.—No. 233.

Australia, North-West Coast—Ashburton Road—Reefs in Approach.

The British Admiralty has given notice (No. 691 of 1899) that the following information, dated Septem-

ber 9, 1899, respecting the reefs in the approach to Ashburton road, has been received from Commander J. W. Combe, H. M. surveying vessel "Penguin" :—

- (a) The small coral reef, marked P.D. on the Chart, south-west of Airie island, was found to be 2 cables in extent, with a depth of 6 ft. at low-water springs. It is situated in approximately lat. $21^{\circ} 24' 15''$ S., long. $115^{\circ} 6' 0''$ E.

- (b) A patch 3 cables long, east and west, and 1 cable broad, composed of sand and coral, with the least depth of 2 fathoms over it, is situated in approximately lat. $21^{\circ} 33' 30''$ S., long. $115^{\circ} 2' 30''$ E.

- (c) A patch composed of sand and coral, $1\frac{1}{2}$ cable in extent, with a least depth over it of 2 fathoms, is situated in approximately lat. $21^{\circ} 34' 0''$ S., long. $115^{\circ} 1' 30''$ E.

- (d) A patch composed of sand and coral, 2 cables in extent, with a least depth over it of 2 fathoms, is situated with the summit of Ashburton island bearing S. 41° W., distant $2\frac{3}{8}$ miles, and north peak of Saddle hill S. 10° E.

- (e) A patch composed of sand and coral, 4 cables long N. by E. and S. by W., and 1 cable broad, and having depths over it of from 11 to 14 ft. at a low-water springs ; the north end is situated with summit of Ashburton island bearing N. 59° E., distant $1\frac{5}{8}$ mile, and entrance point beacon S. 36° E.

Approximate position : lat. $21^{\circ} 37' 5''$ S., long. $114^{\circ} 53' 20''$ E.

Variation, 1° westerly in 1899.

This notice affects the following Admiralty Chart :—
Bedout island to Cape Cuvier, No. 1,055 ; also Australia Directory, vol. III., 1895, pages 295-97.

P. J. FALLE, Comdr., R.I.M.,
Port Officer of Calcutta.

Calcutta, December 1, 1899.

BENGAL.—No. 234.

India, West—Arabian Sea—Minicoy Island Light—Obscured Arc.

The British Admiralty has given notice (No. 696 of 1899) that information, dated October 23, 1899, has been received from the Board of Trade that recent investigation proves that Minicoy light is now only obscured by trees between the bearings of S. W. and W. by N., and at distances from it of from $5\frac{1}{2}$ miles on the first bearing to $1\frac{1}{2}$ mile on the last.

Approximate position : lat. $8^{\circ} 16' N.$, long. $73^{\circ} 1' E.$
Variation, nil in 1899.

This notice affects the following Admiralty Chart :—
Cochin to Cape Comorin, No. 2,738 ; also List of Lights, Part VI., 1899, No. 280 ; and West Coast of Hindustan Pilot, 1898, page 342.

P. J. FALLE, Comdr., R.I.M.,
Port Officer of Calcutta.

Calcutta, December 1, 1899.

TRADE MARKS NOTIFICATIONS.

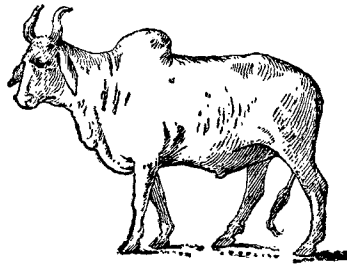
IN compliance with the provisions of "The Trade Marks Ordinances, 1888 and 1890," and the Regulations made on March 23, 1889, notice is hereby given that Messrs. Julius & Creasy have applied for the registration of the following Trade Mark in respect of chemical substances used in manufactures, photography and philosophical research, anti-corrosives and anti-foulers, including compositions for ships' bottoms, in the name of Suter Hartmann & Rahtjens Composition Company, Limited, of 18, Billiter street, London, England, Merchants and Manufacturers, in Class 1 in the Classification of Goods in the above-mentioned Regulations :—



Colonial Secretary's Office,
Colombo, December 21, 1899.

E. NOEL WALKER,
Colonial Secretary.

IN compliance with the provisions of "The Trade Marks Ordinances, 1888 and 1890," and the Regulations made on March 28, 1889, notice is hereby given that Messrs. F. J. and R. F. de Saram have applied for the registration of the following Trade Mark in respect of Tobacco, manufactured or unmanufactured, in Class 45, in the name of Gilliat Edward Hatfield, trading in co-partnership with Gilliat Hatfield as Taddy & Co., and as James Taddy & Co., of 45, Minories, London, England, Manufacturers, in the Classification of Goods in the above-mentioned Regulations:—



ZEBU

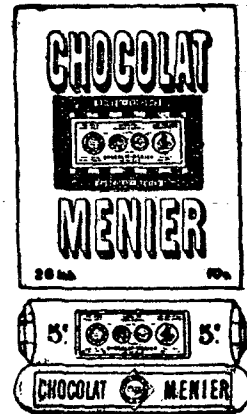
Colonial Secretary's Office,
Colombo, December 21, 1899.

E. NOEL WALKER,
Colonial Secretary.

IN compliance with the provisions of "The Trade Marks Ordinance, 1888 and 1890," and the Regulations made on March 28, 1889, notice is hereby given that Messrs. Julius & Creasy have applied for the registration of the following Trade Mark in respect of Chocolate Cakes in Class 42 in the name of the Societé Menier Manufactory, 56, Rue de Chateaudun, Paris, and offices at 11, Place de la Madeleine, Paris, in the Classification of Goods in the above-mentioned Regulations:—

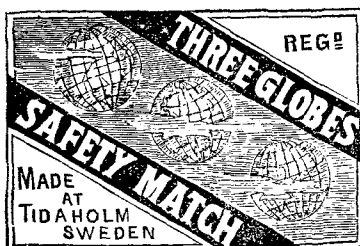


Colonial Secretary's Office,
Colombo, December 21, 1899.

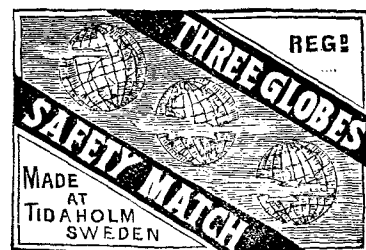


E. NOEL WALKER,
Colonial Secretary.

IN compliance with the provisions of "The Trade Marks Ordinances, 1888 and 1890," and the Regulations made on March 28, 1889, notice is hereby given that Messrs. T. A. Martin & Co., Importers and Merchants, Colombo, have applied for the registration of the following Trade Mark in respect of Matches in their name, in Class 47 in the Classification of Goods in the above-mentioned Regulations:—



Colonial Secretary's Office,
Colombo, December 21, 1899.



E. NOEL WALKER,
Colonial Secretary.

Total Quantities of the following Articles Exported from the Ports of Colombo and Galle during the under-mentioned periods.

Vessels.	Date of Clearing.	For what Port.	Plantation Coffee.	Native Coffee.	Tea.	Cacao.	Trunk Cinchona.	Branch Cinchona.	Cinchona Chips.	Cocoanuts.	Copperab.	Cocconut Oil.	Cocconut Poonac.	Cinnamon.	Cinnamon Oil.	Citronella Oil.	Cardamoms.	Ebony.	Plumbago.	Coir Rope.	Coir Junk.	Coir Yarn.	Coir Fibre.	Sapan wood.	Orchilla.	Kitaool Fibre.	Beer Horns.
COLOMBO.			1899	cwt.	cwt.	lb.	cwt.	lb.	lb.	lb.	No.	cwt.	cwt.	cwt.	lb.	oz.	lb.	lb.	cwt.	cwt.	cwt.	cwt.	cwt.	lb.	cwt.	cwt.	cwt.
ss. Henzada	18-12	Zanzibar, &c	—	—	7776	—	—	—	—	—	—	—	—	—	—	—	—	—	—	—	—	—	—	—	—	—	—
ss. Massilia	18-12	China	—	—	300	—	—	—	—	—	—	—	—	—	—	—	—	—	—	—	—	—	—	—	—	—	—
ss. Gera	21-12	Bremen	—	—	162	—	—	—	—	—	—	—	—	—	—	—	—	—	—	—	—	—	—	—	—	—	—
ss. Borneo	21-12	London	—	—	233188	—	—	—	—	—	—	—	—	—	—	—	—	—	—	—	—	—	—	—	—	—	—
ss. Annam	21-12	Singapore	—	—	—	—	—	—	—	—	—	—	—	—	—	—	—	—	—	—	—	—	—	—	—	—	—
ss. Clan Ogilvie	22-12	London	—	—	—	433	—	—	—	—	—	—	—	—	—	—	—	—	—	124	—	—	—	—	—	—	—
ss. Kawachi Maru	22-12	do.	—	—	169635	769	—	—	—	2900	264	6412	—	26200*	—	—	5858	—	—	—	—	—	392	266	—	14	3
ss. Bayern	23-12	Bremen	16	—	11791	—	—	—	—	14000	5692	1951	4537	—	—	—	2434	946	2774	—	—	205	768	—	60	—	
ss. Tencer	23-12	Straits and China	—	—	—	—	—	—	—	—	—	—	—	41100†	—	—	1000	—	—	—	—	374	—	—	—	—	—
ss. Preussen	23-12	Singapore	—	—	27209	—	—	—	—	—	—	103	—	—	—	—	—	—	—	107	234	—	—	—	—	—	—
ss. Shanghai	23-12	London	—	—	18975	—	—	—	—	—	—	200	—	—	—	—	—	—	—	—	—	9	—	—	—	—	—
ss. City of Bombay	23-12	do.	—	—	528307	221	—	—	—	—	—	—	4012	—	—	—	—	—	—	—	—	—	—	—	—	—	—
ss. Cuzco	23-12	Australia	—	—	174724	—	—	—	—	—	—	—	—	—	—	—	—	—	—	—	—	489	—	—	—	—	—
GALLE.																											
ss. Clan Macleod	18-12	London	—	—	1540	—	—	—	—	24708	—	1648	—	—	—	—	—	—	—	1482	—	—	—	—	—	—	—
ss. Umama	22-12	Cape Town	—	—	4757	—	—	—	—	—	—	—	—	—	—	—	—	—	—	—	—	2300	—	—	—	—	—

* And Chips 5,218 lb.

† And Chips 1,960 lb.

‡ And Chips 11,200 lb.

Importation of Rice from Indian Ports during the Week.

TO COLOMBO :—

From Bombay	...	Bags	135
Calcutta	...	"	40,536
Southern India	...	"	12,690

Total ... Bags 53,361

TO GALLE :—

From Southern India ... Bags 1,055