

Ceylon

LABOUR GAZETTE

CM
3-OCT-1959
N 29



VOLUME X
No. 9

SEPTEMBER
1959

In this Issue

The Ten-Year Plan from the Labour Point of View.

Statistics of the Month in Brief.

Notes of Current Interest.

for
FERTILISERS
ENGINEERING
and
ESTATE SUPPLIES

Consult

THE
COLOMBO COMMERCIAL
COMPANY LIMITED

(Incorporated in Great Britain. Liability of Members is limited)

Manufacturers of Tea and Rubber Machinery

Mechanical and Electrical Engineers

**Builders and Contractors, Merchants,
Exporters of Ceylon Tea, Estate Agents.**

Telegrams : "Cossack"

Telephone : 79351

P. O. Box 33

COLOMBO

and

Badulla

Kandapoia

Kandy

Hatton

Ratnapura

"CEYLON LABOUR GAZETTE"

A Monthly Review of Matters pertaining to Labour

Issued by the DEPARTMENT OF LABOUR, CEYLON

The price per copy is Re. 1.25 inclusive of postage (Inland)

ANNUAL SUBSCRIPTION

Rs. 12	(12 months) inclusive of postage—Inland	
Rs. 13	do.	India, Pakistan & Burma
20s.	do.	United Kingdom & Australia
\$ 3	do.	U. S. A. & Canada

Advertisement space will be available at the rates mentioned below
for each issue :

Facing Contents Page	.. Full Page	.. Rs. 125
4th Page of Cover	.. Full Page	.. Rs. 125
3rd Page of Cover	.. Full Page	.. Rs. 100
2nd Page of Cover	.. Full Page	.. Rs. 100
1st Advertisement Page	.. Full Page	.. Rs. 100
Immediately after last page of printed matter	.. Full Page	.. Rs. 95
Inside Full Full Page	.. Rs. 80
Inside Half Half Page	.. Rs. 45

No Quarter Pages

Note.—10% reduction will be given for continued advertisements
in six or more issues

Enquiries regarding the Ceylon Labour Gazette may be made from—

THE "CEYLON LABOUR GAZETTE"

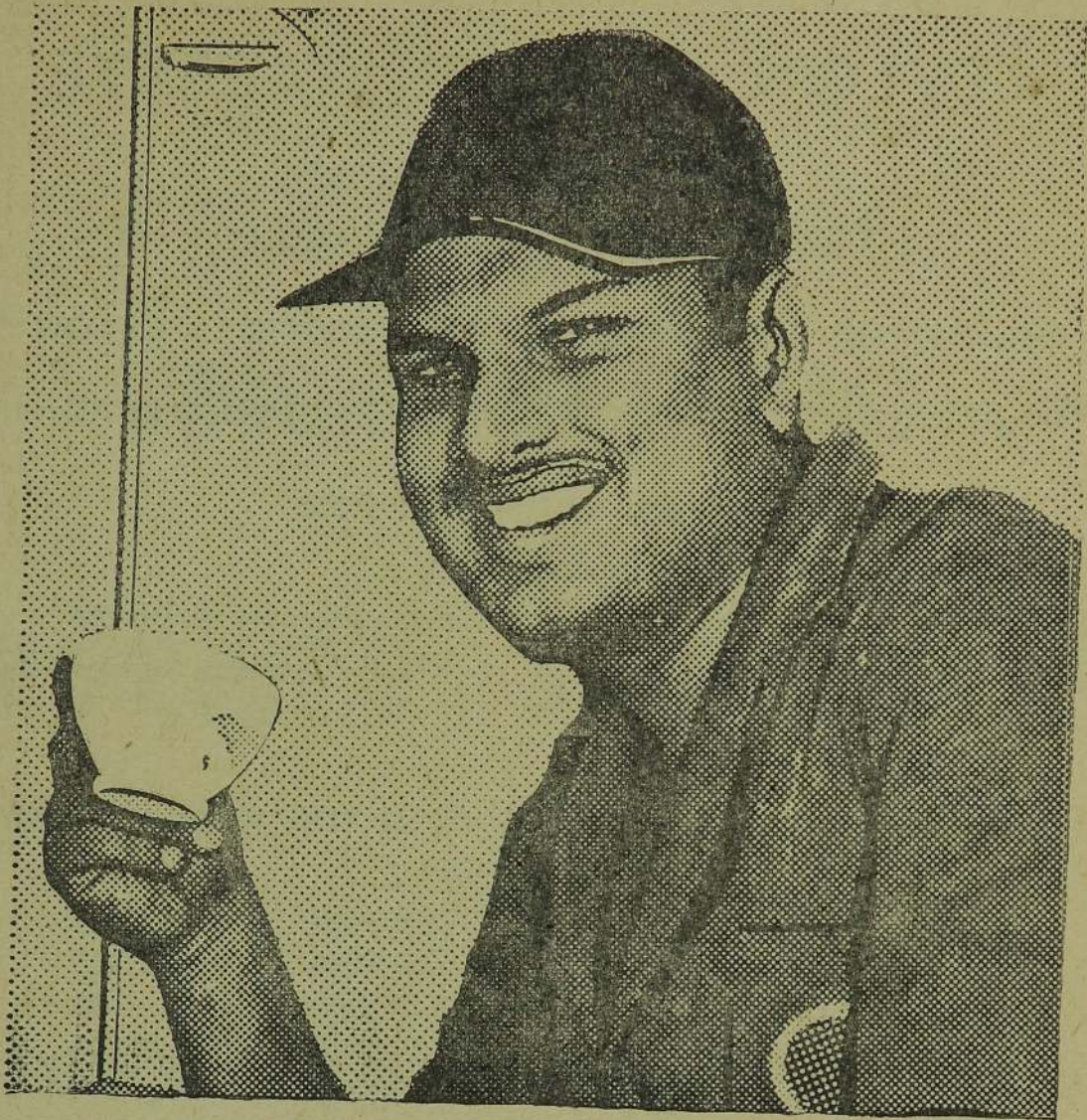
Editor : V. SARVALOGANAYAGAM

c/o The Department of Labour
Lower Lake Road, Colombo 3

Tel. No. 79861

Cheques, Money Orders, and Postal Orders from Subscribers
and Advertisers should be made out in favour of the
Commissioner of Labour

DEPARTMENT OF LABOUR
P. O. Box No. 575
LOWER LAKE ROAD, COLOMBO 3

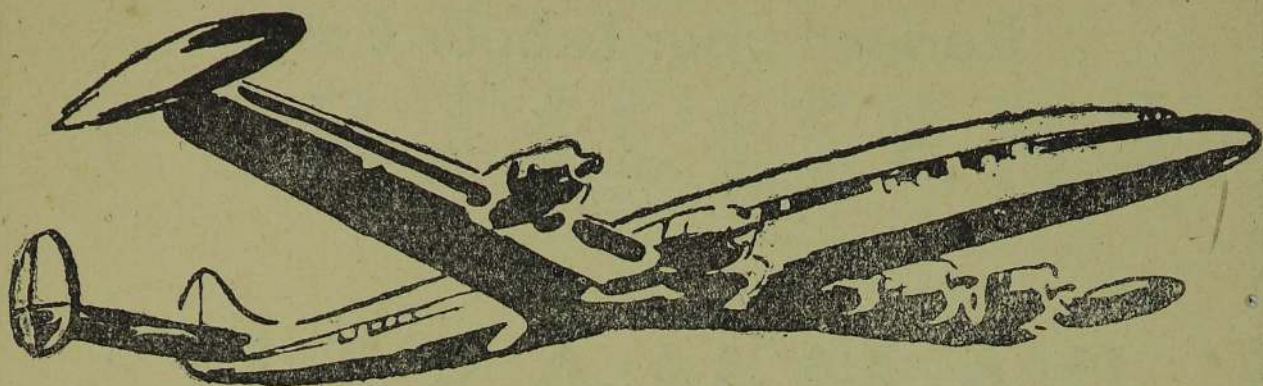


*I like NESTOMALT because
it does me good*

Mechanics like it, children like it, teenagers like it. Everybody likes Nestomalt—and it does them good. Equally delicious hot or ice cold, there's nothing like Nestomalt to replace lost energy and build you up. The wonderful thing about Nestomalt is that it contains so much that is good for you, and still tastes so very, very nice.



NESTOMALT
MALTED MILK WITH ADDED VITAMIN B1



... For service unsurpassed!

AMSTERDAM

AIR CEYLON OFFERS YOU

LONDON

★ Streamlined aircraft

ROME

★ Comfortable and luxurious
travelling conditions

CAIRO

BAHRAIN

★ Courteous and efficient
aircrew

KARACHI

BOMBAY

COLOMBO

SINGAPORE

AIR  **CEYLON LTD**

Reduce your Labour Costs

by using

PAMMASTIC

—the World's Best Emulsion Paint

The time taken in redecorating walls and ceilings will be reduced drastically if PAMMASTIC is used, as this remarkable paint needs no undercoat or primer and dries in an hour. PAMMASTIC gives a delightful matt surface which can be washed and scrubbed repeatedly. Subsequent redecoration can be postponed almost indefinitely. Such is PAMMASTIC'S durability, it merely requires a good scrubbing to keep its colour and good looks.

For full particulars regarding colours, prices, etc.

Apply to

HAYLEYS LIMITED

400, DEANS ROAD, COLOMBO

Phone : 9206

Specialists in

FERTILISERS

Sole Suppliers of

STERILISED ANIMAL MEAL

BLACK LABEL

THE IDEAL DRESSING

for

NURSERIES and YOUNG PLANTS

SHAW WALLACE & HEDGES LTD.

363, Kollupitiya Rd.

COLOMBO 3.

Tei. No. 78271.

Box No. 137.

MERCANTILE BANK LIMITED

(Incorporated in England—Liability of Shareholders Limited)

Head Office : 15, Gracechurch Street, London, E.C. 3

West End Branch—123, Pall Mall, London, S.W. 1

Capital Authorised	£ 4,000,000
Capital Paid up	£ 2,940,000
Reserves and Undivided Profits	£ 2,431,407

Branches and Agencies

India ..	Bombay, Gandhidham, Calcutta, Howrah, Delhi, New Delhi, Madras
Pakistan ..	Karachi, Chittagong, Khulna
Ceylon ..	Colombo (Fort), 16, Queen Street Colombo (Pettah), 88, Main Street Kandy, Galle, Jaffna
Burma ..	Rangoon
Mauritius ..	Port Louis
Singapore	
Malaya ..	Kuala Lumpur, Kota Bharu, Kuala Lipis, Kuala Trengganu, Kuantan, Temerloh, Penang, Ipoh, Taiping, Seremban
Hong Kong	
Thailand ..	Bangkok Bangkok (Rajawongse Road)
Japan ..	Tokyo, Osaka, Semba
New York ..	37, Wall Street, N.Y. 5

Every Description of Banking Business Transacted

J. B. STEWART,
Manager, Colombo.

CIVIL ENGINEERS



CONTRACTORS

Suppliers of

INDUSTRIAL PLANTS & EQUIPMENT

“Atlas Copco” Air Compressors & Tools,
Swedish Rock Drill Steels, Danish Dairy
Machinery & Utensils, “Maximixam”

Concrete Mixers etc., etc.

EQUIPMENT & CONSTRUCTION CO., LTD.

7, CANAL ROW

COLOMBO 1

Control

COOCH & ILLUK

WITH

DOWPON

Packed in 50 lb. Kegs and 10 lb. Bags

Available from

HARRISONS & CROSFIELD LTD.

THOS. COOK & SON

(Continental and Overseas) Ltd.

LLOYDS BUILDING, PRINCE STREET
COLOMBO

TRAVEL

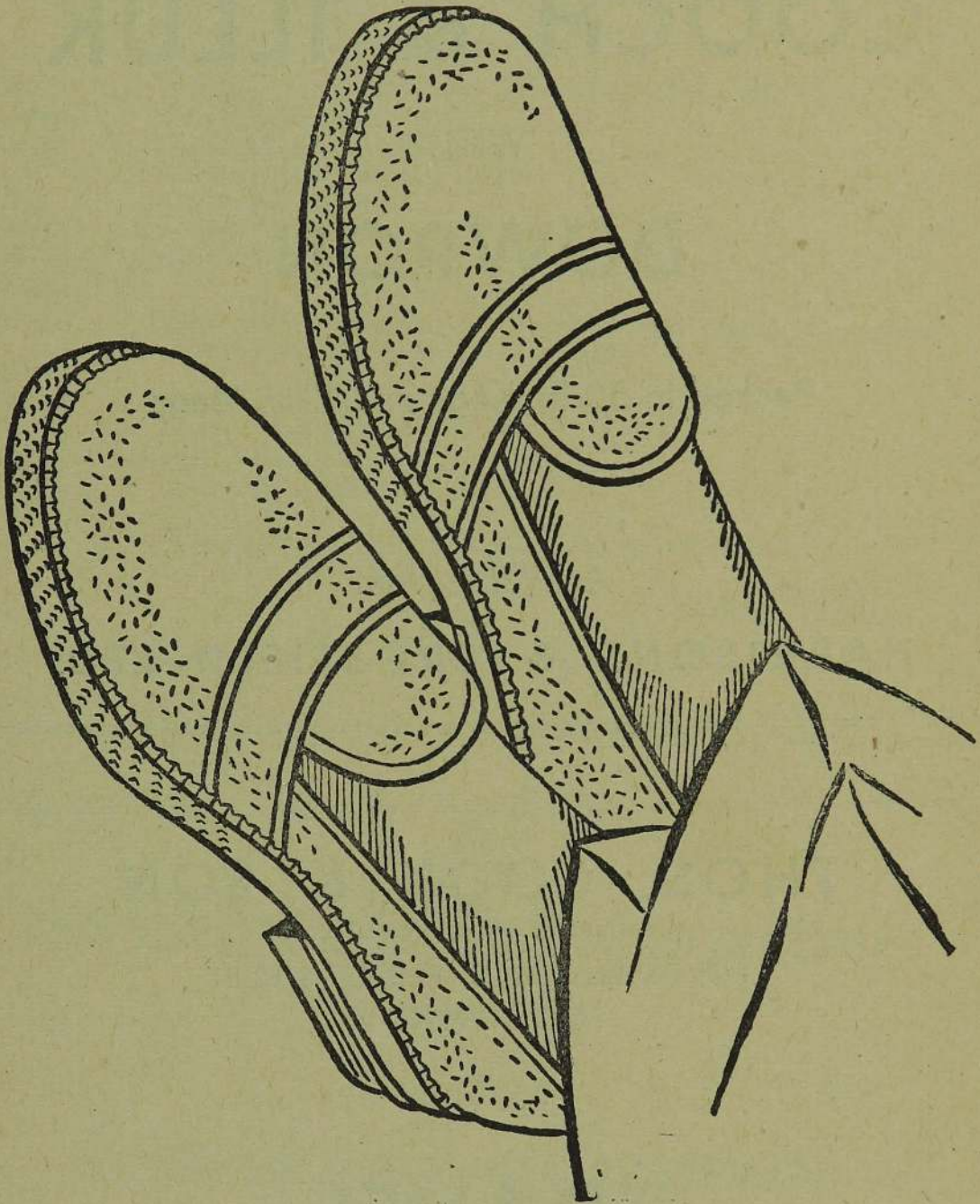
*FOREIGN EXCHANGE
SHIPPING AND FORWARDING*

COOKS WORLD TRAVEL SERVICE

CATERS FOR ALL TRAVELLERS NEEDS

ROAMER

MADE IN CEYLON



Children's Sizes 9-2 .. Rs. 3'90

Gents' Sizes 3-9 .. Rs. 5'50

Bata

SHOE CO. OF CEYLON LTD.

AIRPORT ROAD, RATMALANA

CONTENTS

PAGE

1.	Ten-Year Plan from the Labour Point of View	415
2.	Statistics of the Month in Brief	417
3.	Notes of Current Interest	419

LIST OF TABLES

<i>Table</i>		PAGE
I	Cost of Living Index Numbers—Colombo Working Class since 1939 ..	420
II	Wages Index Numbers—Tea and Rubber Estate Labourers and Unskilled Labourers in Government Employment	421
III	General Wage Rate (Minimum) Index Numbers	422
IV	The number of Registrants for employment or better employment according to registers maintained at the Employment Exchanges in the Island since 1939	423
V	The number of Registrants for employment or better employment according to registers maintained at the Employment Exchanges in the Island (classification by Exchanges areas) since 1939	424
VI	The number of persons placed in employment since 1939	426
VII	The number of persons registered and the number placed in employment during the month of July, 1959	426
VIII	Strikes in Ceylon since 1939	427
IX	Classification of the Strikes in July, 1959, by Industries or Trades ..	428
X	Classification of the Strikes in July, 1959, by Causes ..	428
XI	Arrivals and Departures of Indian Estate Labourers since 1939 ..	429

APPENDICES

PAGE

Appendix

I	Statement showing the minimum rates of wages payable to workers in different trades for which Wages Boards have been established (September, 1959)	430
II	Ready Reckoners showing the Basic Wages, Special Allowances, and the Minimum Wages payable for the number of days worked during September, 1959, to workers in the—	
	(A) Tea Growing and Manufacturing Trade	438
	(B) Rubber Growing and Manufacturing Trade	439
	(C) Cocoa, Cardamom and Pepper Growing and Manufacturing Trade	440
III	Ready Reckoners showing the Minimum Wages payable for the number of days worked during September, 1959, to workers in the—	
	(A) Coconut Growing and Manufacturing Trades	441
	(B) Rubber Export Trade	442
	(C) Tea Export Trade	443
	(D) Engineering Trade	444
	(E) Match Manufacturing Trade	445
	(F) Building Trade	446
	(G) Motor Transport Trade—Daily-paid workers	447
IV	Ready Reckoner showing the Minimum Wages payable for the number of days worked during September, 1959, to monthly-paid workers in the—	
	(A) Motor Transport Trade—Monthly-paid workers	448
	(B) Baking Trade	449

CEYLON

LABOUR GAZETTE

Volume X No. 9

September, 1959

THE TEN-YEAR PLAN FROM THE LABOUR POINT OF VIEW (contributed)

THE Ten-Year Plan*, just published, provides for the first time a comprehensive plan of development for the country. The National Planning Council (NPC) themselves consider it to be of greatest importance that the Report becomes the subject of nation-wide discussion (Preface p iv); though closely integrated, the Plan is not inflexible, and comments and suggestions are welcome. It is therefore in the fitness of things that the "Labour Gazette" should take early initiative in examining the Labour aspects of the Plan.

2. And the Labour aspect of the Plan occupies the key position; employment figures as the top basic objective (p 60). The Plan is more employment oriented than the statement of objectives conveys. It permeates recommendations in relation to other basic objectives too, so much so that the employment aspect is stated to have added another dimension (p 52). Not only the investment pattern, but also the pace of development have been programmed to measure up to the employment problem, present and potential (p 52). Employment being thus the corner-stone of the strategy of planning, full and early examination of the Labour point of view is crucial.

3. The employment implications and targets of the Plan are summed up first, for facility of discussion. The Plan adopts as bench-mark estimate a total population of 10.2 million in 1959, with 3.7 million (36% of total population) in the labour force (p 65); on the basis of projections relied on, the population and the labour force are to increase to 13.4 million and 4.8 million respectively at the end of the Plan period, in 1968, amounting to a growth rate of about 3% per annum. The gross inadequacy of statistical information is acknowledged (p 63); in the absence of any other reliable source, the bench-mark figure of unemployed is taken as 1 million (3% of the labour force) on basis of Employment Exchange registration, and the quantity of underemployment left unspecified. The labour force, excluding the 3% unemployed, are presently distributed in the different broad industry sectors as follows: tea, rubber, coconut plantations—23%; other agriculture, including fisheries—32%; industries, construction, transport—16%; public administration—5%; other services, including trade—21% (p 89).

* The Ten-Year Plan (June 1959), The Planning Secretariat, Colombo; all page references in this article relate to the Report.

4. The increased labour force of 1968 is proposed to be fully absorbed by the development programmed (leaving a margin of merely 1% for frictional unemployment) to give the following changed distribution by industry sectors in 1968 : tea, rubber, coconut plantations—20% ; other agriculture, including fisheries—29% ; industries, construction, transport—22% ; public administration—6% ; other services, including trade—22% (p 89). Thus in course of the Plan period of 10 years, absorption of about 30% extra numbers, reducing unemployment to the merely frictional and mitigating the unknown extent of underemployment, is programmed ; this is achieved by an aggregate investment of Rs. 3,110 million during the period, distributed as follows : tea, rubber, coconut plantations—9% ; other agriculture, including fisheries—15% ; industries, construction, transport 43% ; public administration—1% ; other services, including housing, health, education—32% (p 69).

5. The Plan very rightly places highest emphasis on population— which comprises both the ultimate object and the instrument in planning, rather than on economic magnitudes and allocations : but this earnestness of purpose could not be matched by the quality of data available for use as bench-mark and future growth estimates. The Report points out the need for improved data, and contemplates possible re-appraisal and revision of the Plan in their light (pp 87-8). Facts concerning the general population growth are outside the purview of direct Labour interests, but the future labour force estimates are all derived from basic population projections. Proper assessment of the variables concerning population growth is therefore essential and will no doubt be made ; NPC actually recommend a high-power Population Committee (p 17). Labour force participation rates, and measures of unemployment and underemployment are in the direct field of Labour ; the Report mentions, in this connection the Survey already undertaken by the Department of Labour, the Ceylon Employment Unemployment and Underemployment Sample Survey 1959 (EUUSS) ; information available from the Survey in about a year's time, should help a great deal in fixing the rates and quantities involved. Even at this stage, however, the view might be expressed that the quantity of unemployment is likely to be much higher than assumed in the Plan ; and the quantity of underemployment very substantial—the real long-term problem in underdeveloped economies.

6. The role of Labour in the country's effort to development as set out in the Plan, is actually three-fold :

(i) *At the planning phase* : To improve the bench-mark factual base and the employment variables, for future manpower and employment estimates, already mentioned. The NPC are themselves clear that the Plan as recommended, even after initial adjustments and improvements, is not to be taken as representing a once for all statement (p 55). Periodical revisions in light of new facts and experience are inevitable in the dynamics of development.

(ii) *At the operational phase* : Apart from labour relations, productivity and other factors directly concerning Labour, the very important subject of vocational training geared to the Plan requirements will form an important operational responsibility of Labour. The NPC agrees with the World Bank Mission Report that development in the country is

limited less by finance than by technical skills (p 468). Employment being the top objective, Labour will naturally be called upon to collaborate in important operational aspects of the programme.

- (iii) *At the evaluation phase* : Again the top basic objective being employment, proper evaluation of performance is feasible only through periodic measurements of employment. Evaluation is a continual process that leads to feed-back in revising a plan. The plan conceives a sizable volume of indirect employment, including partial augmenting of employment to the underemployed, apart from the direct employment on specific programmes (p 357). Such direct specific employment will be reflected in the usual routine labour statistics, but measurement of indirect diffused employment is very complex ; without going into the actual mechanism one could aver that total (and not sector or programmes specific) measures are necessary for proper evaluation, as added employment in one programme may mean loss of employment in some other segment. The fact that unemployment lies latent in underemployment in peasant type of economies, and start coming more and more to the surface with industrial development also deserves mention in this context. At least one country, Puerto Rico, was faced with the spectacle of increasing number of unemployed (as measured by the usual orthodox methods of industrialised countries) with increasing industrialisation !

7. Some remarks may be ventured here about employment aspects of the Plan. The discrete treatment of rural and urban unemployment, and the generalised and subdued attention to underemployment in the Report—mainly from want of data (p 58), are perhaps not realistic ; more and better employment opportunities in industries are bound to stimulate a migration spiral, and underemployment is the more substantive long-term problem. The Plan apparently programmes the social services only to match population increase, and does so with some apologies (p 46) ; improving the social services (not only for the estimated population increase, but also for the existing population) is the ultimate aim of development, and the employment aspect of the programme of social services could have been highlighted : Indeed, it is possible to adopt a high productivity basis in deciding investment priorities of the industrial programme and to redistribute higher incomes from the source to achieve optimum employment targets through organization of social services. There are really two aspects of employment. (i) the national, concerned with utilisation of manpower, and (ii) the individual, concerned with individual return or production. Employment and production have therefore a common base, and social services provide the medium of link.

STATISTICS FOR THE MONTH IN BRIEF

The following is the summary of the principal statistics listed this month. Further details will be found in the tables and appendices appearing in this issue.

Cost of Living

The Colombo Consumers Price Index for the month of August, 1959 is 104.7 as against 105.6 for July—a decrease of .9.

Wage Rates

(a) The basic wages payable for the month of September, to workers in trades to which Part II of the Wages Boards Ordinance has been applied remain unchanged ;

(b) The Special allowances payable for the month of September, 1959 to workers in the Tea Growing and Manufacturing Trade, Rubber Growing and Manufacturing Trade, Cocoa, Cardamom and Pepper Growing and Manufacturing Trade, Coconut Growing Trade, Coconut Manufacturing Trade and Plumbago Trade will be the same as that for the month of August 1959 ;

(c) The Special allowances payable to workers in all other trades to which Part II of the Wages Boards Ordinance has been applied will be slightly less than that for the month of August 1959.

Strikes

There were altogether 19 strikes for the month of June 1959 involving 4,795 workers and a loss of 30,398 man-days as against 23 strikes during the month of May 1959 involving 4,567 workers and a loss of 22,513 man-days. Eight of these strikes were in Tea plantations involving 2,296 workers and a loss of 19,603 man-days ; 1 in a rubber estate involving 103 workers and a loss of 880 man-days ; one in a Tea cum Rubber estate involving 51 workers and a loss of 51 man-days ; one in a Tea cum Cinnamon estate involving 25 workers and a loss of 200 man-days. Of the remaining 8 strikes 3 were in the Engineering Trade involving 1,624 workers and a loss of 8,293 man-days ; 1 in the Motor Transport trade involving 601 workers and a loss of 983 man-days ; 1 in the Coconut Manufacturing Trade involving 58 workers and a loss of 290 man-days ; 1 in the Cinema Trade involving 5 workers and a loss of 5 man-days ; 1 in the Building Trade involving 14 workers and a loss of 21-man days and 1 was in Local Government Services involving 18 workers and a loss of 72 man-days.

REGISTRANTS FOR EMPLOYMENT OR BETTER EMPLOYMENT

The total number of registrants for employment or better employment, according to registers of the Employment Exchanges, as at the end of June, 1959, and July, 1959, was as given below :—

	June, 1959			July, 1959		
	Males	Females	Total	Males	Females	Total
Technical & Clerical ..	14,488	5,401	19,889	14,702	5,637	20,339
Skilled ..	12,381	1,197	13,578	12,542	1,274	13,816
Semi-skilled ..	26,686	7,250	33,936	27,593	7,633	35,226
Unskilled ..	52,688	2,850	55,538	56,792	2,987	59,779
Total ..	106,243	16,698	122,941	111,629	17,531	129,160

The total number of persons placed in employment during these two months is shown below :—

	June, 1959			July, 1959		
	Males	Females	Total	Males	Females	Total
Technical & Clerical ..	88	8	96	82	26	108
Skilled ..	58	—	58	107	2	109
Semi-skilled ..	101	10	111	117	14	131
Unskilled ..	269	7	276	608	—	608
Total ..	516	25	541	914	42	956

NOTES OF CURRENT INTEREST

Trade Unions registered during the month of July, 1959

Reg. No.	Name of Trade Union
1369 ..	Bandarawela Sanyuktha Mandaleeya Wadu Kamkaru Samithiya
1370 ..	Health Department Telephone Operators' Union
1371 ..	Ahara Departmentuwe Pravahana Sewaka Vurthiya Samithiya
1372 ..	Trincomalee Scavenging Workers' Union
1373 ..	Gal Oya Co-operative Employees Union
1374 ..	Kaudulla Samupakara Sevaka Vurthiya Samithiya
1375 ..	Port Commission Mahara Quarrye Eksath Sewaka Vurthiya Samithiya
1376 ..	Ceylon Air Academy Employees Union
1377 ..	Municipal Dispensary Orderlies Union
1378 ..	National Employees Union
1379 ..	Vada Illankai Kooturavu Iyeaka Tholilars' Sangam
1380 ..	Government School Dental Nurses Association
1381 ..	Coconut Research Institute (Ceylon) Research and Extension Staff Officers' Association
1382 ..	Galu Wellaboda Pattu Samupakara Sewaka Vurthiya Samithiya
1383 ..	Madyama Palathe Gambada Usavi Bharakaruwange Samithiya
1384 ..	Air Ceylon Traffic and Despatch Employees Union
1385 ..	Sri Lanka Parivenachariya Sangamaya
1386 ..	Government Eastern Paddy Grinding and GPS Workers' Union
1387 ..	Dunkannawa Eksath Kamkaru Samithiya
1388 ..	Anuradhapura Distrikkaye Samupakara Sewaka Vurthiya Samithiya
1389 ..	Government Vaccinators' Union—Department of Health
1390 ..	Ceylon United General Workers' Union
1391 ..	Arpico Finance Independence Union
1392 ..	District Supervisors' (National Milk Scheme) Union.

TABLE I—COST OF LIVING INDEX NUMBERS

A

Colombo Working Class

Base : November, 1938-April, 1939=100

Year	Food	Fuel and Light	Rent	Clothing	Miscellaneous	Final Index Number
Group Weights	52.40 ..	6.28 ..	15.96 ..	8.36 ..	17.00 ..	(Nov. 1938-April 1939 = 100)

INDEX NUMBERS

Base : November, 1938-April, 1939 = 100

1939	.. 112	.. 102	.. 97	.. 112	.. 104	.. 108†
1940	.. 115	.. 103	.. 97	.. 128	.. 111	.. 112
1941	.. 129	.. 108	.. 96	.. 153	.. 116	.. 122
1942	.. 183	.. 171	.. 93	.. 194	.. 144	.. 162*

Index Number
Nov., 1942
= 100

Base : November, 1942 = 100

Group Weights	63.66 ..	7.26 ..	7.06 ..	8.78 ..	13.24	
1943	.. 103	.. 94	.. 105	.. 138	.. 118	.. 107 .. 197*
1944	.. 102	.. 94	.. 105	.. 156	.. 127	.. 109 .. 200
1945	.. 110	.. 94	.. 112	.. 165	.. 158	.. 121 .. 221
1946	.. 113	.. 111	.. 124	.. 180	.. 155	.. 125 .. 229
1947	.. 126	.. 121	.. 136	.. 213	.. 157	.. 138 .. 252
1948	.. 138	.. 101	.. 148	.. 189	.. 157	.. 142 .. 260
1949	.. 144	.. 97	.. 129	.. 156	.. 148	.. 141 .. 258
1950	.. 154	.. 102	.. 129	.. 155	.. 154	.. 149 .. 272
1951	.. 155	.. 112	.. 129	.. 197	.. 160	.. 154 .. 283
1952	.. 153	.. 104	.. 131	.. 192	.. 168	.. 153 .. 281

† Average for 5 months only.

* Average for 11 months only.

B

Colombo Consumers' Price Index

Base : Average Prices 1952=100

Year	Food	Fuel and Light	Rent	Clothing	Miscellaneous	Final Index Number
Group Weights	61.89 ..	4.29 ..	5.70 ..	9.42 ..	18.71	

INDEX NUMBERS

1953	.. 105.97	.. 99.82	.. 101.32	.. 82.82	.. 97.17	.. 101.6
1954	.. 106.13	.. 103.35	.. 101.53	.. 79.52	.. 94.43	.. 101.1
1955	.. 105.09	.. 102.34	.. 101.53	.. 80.50	.. 94.62	.. 100.5
1956	.. 103.32	.. 101.30	.. 101.53	.. 81.76	.. 98.60	.. 100.2
1957	.. 104.94	.. 97.32	.. 101.53	.. 84.39	.. 106.92	.. 102.8
1958	.. 105.75	.. 101.04	.. 101.53	.. 87.51	.. 113.05	.. 105.0

1958—

January	.. 109.16	.. 98.39	.. 101.53	.. 86.04	.. 110.31	.. 106.3
February	.. 107.99	.. 99.77	.. 101.53	.. 86.22	.. 111.05	.. 105.8
March	.. 106.68	.. 100.53	.. 101.53	.. 85.50	.. 110.26	.. 104.8
April	.. 106.02	.. 100.92	.. 101.53	.. 86.12	.. 110.79	.. 104.6
May	.. 107.00	.. 99.42	.. 101.53	.. 86.77	.. 110.89	.. 105.2
June	.. 105.43	.. 101.61	.. 101.53	.. 87.52	.. 111.76	.. 104.5
July	.. 102.46	.. 102.31	.. 101.53	.. 87.86	.. 114.27	.. 103.2
August	.. 103.79	.. 102.31	.. 101.53	.. 88.23	.. 116.15	.. 104.4
September	.. 104.30	.. 97.69	.. 101.53	.. 88.42	.. 115.75	.. 104.5
October	.. 106.22	.. 104.50	.. 101.53	.. 89.00	.. 116.47	.. 106.2
November	.. 106.08	.. 102.65	.. 101.53	.. 88.96	.. 115.01	.. 105.7
December	.. 103.92	.. 102.31	.. 101.53	.. 89.53	.. 113.90	.. 104.2

1959—

January	.. 104.75	.. 102.65	.. 101.53	.. 90.93	.. 114.67	.. 105.0
February	.. 102.03	.. 102.03	.. 101.05	.. 91.01	.. 114.05	.. 103.5
March	.. 103.47	.. 102.65	.. 101.53	.. 91.33	.. 115.20	.. 104.4
April	.. 105.50	.. 102.65	.. 101.53	.. 91.49	.. 116.20	.. 105.8
May	.. 105.34	.. 102.31	.. 101.53	.. 91.58	.. 114.67	.. 105.4
June	.. 106.48	.. 101.96	.. 101.53	.. 91.31	.. 114.99	.. 106.2
July	.. 105.36	.. 102.31	.. 101.53	.. 92.31	.. 115.31	.. 105.6
August	.. 103.44	.. 102.31	.. 101.53	.. 93.12	.. 116.26	.. 104.7

TABLE II—WAGES INDEX NUMBERS

Tea and Rubber Estate Labourers and Unskilled Male Workers in Government Employment

A

BASE : 1939=100

Year	Tea and Rubber Estate Workers			Unskilled Male Workers in Government Employment in Colombo		
	Average Minimum Daily rate of Wages Rs. c.	Minimum Wage Rate Index No.	Index No. of Real Wages	Average Monthly Rate of Wages Rs. c.	Wage Rate Index No.	Index No. of Real Wages
1939 .. — 41	.. 100	.. 100	.. 16.64	.. 100	.. 100
1940 .. — 41	.. 100	.. 93	.. 16.64	.. 100	.. 96
1941 .. — 45	.. 110	.. 92	.. 18.45	.. 111	.. 98
1942 .. — 68	.. 166	.. 111	.. 24.23	.. 145	.. 97
1943 .. — 83	.. 202	.. 102	.. 28.98	.. 174	.. 96
1944 .. — 87	.. 212	.. 101	.. 34.03	.. 204	.. 110
1945 .. — 1.00	.. 244	.. 110	.. 41.92	.. 252	.. 123
1946 .. — 1.15	.. 280	.. 123	.. 68.52	.. 412	.. 194
1947 .. — 1.20	.. 293	.. 123	.. 75.74	.. 455	.. 195
1948 .. — 1.29	.. 315	.. 122	.. 78.16	.. 470	.. 195
1949 .. — 1.31	.. 320	.. 121	.. 77.81	.. 468	.. 196
1950 .. — 1.53	.. 373	.. 136	.. 83.11	.. 499	.. 198
1951 .. — 1.90	.. 463	.. 161	.. 89.79	.. 540	.. 206
1952 .. — 1.92	.. 468	.. 163	.. 89.79	.. 540	.. 207

B

BASE : 1952=100

1953 .. — 1.95	.. 101.56	.. 99.96	.. 90.97	.. 101.31	.. 99.71
1954 .. — 1.99	.. 103.65	.. 102.52	.. 91.04	.. 101.39	.. 100.29
1955 .. — 2.06	.. 107.29	.. 106.76	.. 94.94	.. 105.74	.. 105.21
1956 .. — 2.08	.. 108.33	.. 108.11	.. 96.24	.. 107.18	.. 106.97
1957 .. — 2.10	.. 109.38	.. 106.40	.. 99.16	.. 110.44	.. 107.43
1958 .. — 2.14	.. 111.46	.. 106.21	.. 113.74	.. 126.67	.. 120.70
1958 .. January	.. 2.15	.. 111.98	.. 105.34	.. 113.74	.. 126.67	.. 119.16
February	.. 2.15	.. 111.98	.. 105.84	.. 113.74	.. 126.67	.. 119.73
March	.. 2.15	.. 111.98	.. 106.85	.. 113.74	.. 126.67	.. 120.87
April	.. 2.15	.. 111.98	.. 107.06	.. 113.74	.. 126.67	.. 121.10
May	.. 2.15	.. 111.98	.. 106.44	.. 113.74	.. 126.67	.. 120.41
June	.. 2.15	.. 111.98	.. 107.16	.. 113.74	.. 126.67	.. 121.22
July	.. 2.12	.. 110.42	.. 107.00	.. 113.74	.. 126.67	.. 122.74
August	.. 2.12	.. 110.42	.. 105.77	.. 113.74	.. 126.67	.. 121.33
September	.. 2.12	.. 110.42	.. 105.67	.. 113.74	.. 126.67	.. 121.22
October	.. 2.12	.. 110.42	.. 103.97	.. 113.74	.. 126.67	.. 119.27
November	.. 2.15	.. 111.98	.. 105.94	.. 113.74	.. 126.67	.. 119.84
December	.. 2.15	.. 111.98	.. 107.47	.. 113.74	.. 126.67	.. 121.56
1959 .. January	.. 2.12	.. 110.42	.. 105.16	.. 113.74	.. 126.67	.. 120.64
February	.. 2.15	.. 111.98	.. 108.19	.. 113.74	.. 126.67	.. 122.39
March	.. 2.12	.. 110.42	.. 105.77	.. 113.74	.. 126.67	.. 121.33
April	.. 2.12	.. 110.42	.. 104.37	.. 113.74	.. 126.67	.. 119.73
May	.. 2.15	.. 111.98	.. 106.14	.. 113.74	.. 126.67	.. 120.07
June	.. 2.15	.. 111.98	.. 105.44	.. 113.74	.. 126.67	.. 119.27
July	.. 2.15	.. 111.98	.. 106.04	.. 113.74	.. 126.67	.. 119.95
August	.. 2.15	.. 111.98	.. 106.95	.. 113.74	.. 126.67	.. 120.98

TABLE III—GENERAL WAGES RATE (MINIMUM) INDEX NUMBERS

Base 1952 = 100

Year	Agriculture *		Trades other than Agriculture †		Agriculture and Trades other than Agriculture Combined	
	Minimum Average daily rates of Wages	Minimum Wage rate Index No.	Minimum Average daily rates of Wages	Minimum Wage rate Index No.	Minimum Average daily rates of Wages	Minimum Wage rate Index No.
	Rs. c.		Rs. c.		Rs. c.	
1952 .. — ..	1.96	100.00	2.92	100.00	2.04	100.00
1953 .. — ..	1.99	101.53	2.95	101.03	2.07	101.47
1954 .. — ..	2.02	103.06	2.94	100.68	2.09	102.45
1955 .. — ..	2.09	106.63	2.96	101.37	2.16	105.88
1956 .. — ..	2.10	107.14	3.00	102.74	2.17	106.37
1957 .. — ..	2.13	108.67	3.15	107.88	2.20	107.84
1958 .. — ..	2.16	**110.20	3.39	**116.10	2.26	110.78
1958 .. January ..	2.17	110.71	3.18	108.90	2.25	110.29
February ..	2.17	110.71	3.20	109.59	2.25	110.29
March ..	2.17	110.71	3.30	113.01	2.26	110.78
April ..	2.17	110.71	3.31	113.36	2.26	110.78
May ..	2.17	110.71	3.32	113.70	2.26	110.78
June ..	2.17	110.71	3.32	113.70	2.26	110.78
July ..	2.15	109.69	3.32	113.70	2.24	109.80
August ..	2.15	109.69	3.29	112.67	2.24	109.80
September ..	2.15	109.69	3.51	120.21	2.26	110.78
October ..	2.15	109.69	3.51	120.21	2.26	110.78
November ..	2.17	110.71	**3.75	**128.42	2.29	112.26
December ..	2.17	110.71	**3.76	**128.77	2.29	112.26
1959 .. January ..	2.15	109.69	3.73	127.74	2.27	111.27
February ..	2.17	110.71	3.74	128.08	2.29	112.26
March ..	2.15	109.69	3.71	127.05	2.27	111.27
April ..	2.15	109.69	3.73	127.74	2.27	111.27
May ..	2.17	110.71	3.77	129.11	2.30	112.75
June ..	2.17	110.71	3.76	128.77	2.29	112.25
July ..	2.17	110.71	3.78	129.45	2.30	112.75
August ..	2.17	110.71	3.78	129.45	2.30	112.75

* Includes Tea Growing and Manufacturing, Rubber Growing and Manufacturing and Coconut Growing Trades only.

† Includes Coconut Manufacturing, Engineering, Printing, Match Manufacturing, Motor Transport, Dock, Harbour and Port Transport, Tea Export, Rubber Export, Cinema and Building Trades only.

** Amended figures.

TABLE IV

The number of Registrants for employment or better employment according to Registers maintained at the Employment Exchanges in the Island

Year	Technical and Clerical	Skilled	Semi- skilled	Unskilled	Total
1939 ..	3,712	11,964	5,034	5,967	26,677
1940 ..	4,734	13,130	4,800	4,981	27,645
1941 ..	5,274	8,882	2,351	3,951	50,458
1942 ..	6,589	9,411	1,882	1,451	19,333
1943 ..	2,282	2,872	1,312	1,869	8,335
1944* ..	295	358	227	173	1,651
1945 ..	2,258	11,025	3,267	4,816	21,366
1946 ..	5,636	10,012	7,527	13,369	36,544
1947 ..	2,883	7,325	8,113	16,423	34,744
1948 ..	4,474	13,027	12,443	36,712	66,656
1949 ..	5,132	11,994	13,591	39,015	69,732
1950 ..	5,627	10,525	13,523	35,447	65,122
1951 ..	5,515	8,186	12,520	26,486	52,707
1952 ..	6,883	7,522	13,795	24,823	53,029
1953 ..	8,374	6,462	13,676	23,034	51,546
1954 ..	11,728	7,919	16,287	27,370	63,304
1955 ..	14,498	8,544	20,142	27,826	71,010
1956 ..	16,091	9,794	25,808	34,259	85,952
1957 ..	18,582	13,439	30,864	47,971	110,856
1958 January	19,257	14,175	32,803	50,016	116,251
February	19,792	14,287	33,020	49,951	117,050
March	19,830	14,110	33,167	49,673	116,780
April	19,443	13,720	32,315	48,188	113,666
May	18,674	13,123	32,123	45,361	109,281
June	18,707	13,003	32,052	46,564	110,326
July	19,086	13,381	32,526	49,083	114,076
August	19,195	13,441	32,356	49,926	114,918
September	19,426	13,615	32,562	49,885	115,488
October	19,623	13,499	32,817	50,004	115,943
November	19,621	13,506	33,068	49,909	116,104
December	19,803	13,674	32,973	51,346	117,796
1959 January	20,266	14,135	33,380	52,352	120,133
February	20,265	13,999	33,287	51,859	119,410
March	19,921	13,965	33,356	52,372	119,614
April	19,559	13,620	32,955	52,804	118,938
May	19,616	13,649	33,288	53,685	120,238
June	19,889	13,578	33,936	55,538	122,941
July	20,339	13,816	35,226	59,779	129,160

* Up to 1944 there was only 1 Employment Exchange in Colombo. In 1945, Exchanges were opened in all the principal towns of the Island.

TABLE V

The number of Registrants for employment or better employment according to registers maintained at the Employment Exchanges

CLASSIFICATION BY EXCHANGE AREAS

Year	Colombo	Negombo	Kalutara	Galle	Kandy	Nawalpaniya	Kurunegala	Jaffna	Ratnapura	Badulla	Batticaloa	Kalmunai**	Trincomalee	Anuradhapura	Awisawella	Haputale	Matara	Vaunmiya	Kegalla	Matale	Total	
1941 ..	20,458	—	—	—	—	—	—	—	—	—	—	—	—	—	—	—	—	—	—	—	—	20,458
1942 ..	19,333	—	—	—	—	—	—	—	—	—	—	—	—	—	—	—	—	—	—	—	—	19,333
1943 ..	8,335	—	—	—	—	—	—	—	—	—	—	—	—	—	—	—	—	—	—	—	—	8,335
1944 ..	1,053	—	—	—	—	—	—	—	—	—	—	—	—	—	—	—	—	—	—	—	—	1,053
1945 ..	10,784	378	2,128	1,230	2,363	259	431	841	120	46	65	1,497	—	—	—	—	—	—	—	—	—	21,366*
1946 ..	25,805	1,117	808	993	3,397	726	352	816	119	438	727	611	—	—	—	—	—	—	—	—	—	36,544†
1947 ..	21,589	2,289	1,643	2,133	4,955	564	430	481	170	490	—	—	—	—	—	—	—	—	—	—	—	34,744
1948 ..	42,209	7,235	2,414	3,995	4,577	1,066	851	1,526	607	704	1,189	—	283	—	—	—	—	—	—	—	—	66,656
1949 ..	44,552	5,041	4,125	5,429	3,195	953	1,052	2,185	727	1,170	607	—	696	—	—	—	—	—	—	—	—	69,732
1950 ..	41,988	3,696	3,501	6,082	2,904	943	1,298	1,991	553	923	980	—	348	—	—	—	—	—	—	—	—	65,122
1951 ..	33,125	3,422	2,886	4,850	2,209	537†	886	1,587	569	904	418	1,207	234	323	—	—	—	—	—	—	—	52,707†
1952 ..	32,124	3,028	3,263	3,381	3,730	547	1,162	1,435	909	663	422	992	252	437	678	—	—	—	—	—	—	53,023
1953 ..	30,203	2,561	3,316	3,949	3,080	735	1,190	1,294	1,002	417	344	333	239	548	477	526	1,382	—	—	—	—	51,546
1954 ..	33,410	2,909	3,484	6,024	3,143	1,708	2,220	1,992	1,471	440	388	297	1,567	884	1,377	396	1,589	—	—	—	—	63,304
1955 ..	36,451	3,395	4,740	6,381	4,377	638	2,767	2,199	1,962	619	455	261	776	1,104	1,582	392	2,411	—	—	—	—	71,010
1956 ..	43,039	3,971	6,243	6,651	4,667	503	4,449	2,165	2,462	604	703	694	939	1,651	1,984	721	4,206	—	—	—	—	85,952
1957 ..	49,899	9,636	6,772	9,225	7,462	794	5,651	2,681	3,180	1,079	631	501§	1,252	1,198	2,226	840	5,331	551	1,947	—	—	110,856

TABLE V—(contd.)

Year	Colombo	Negombo	Kalutara	Galle	Kandy	Nawalapitiya	Kurunegala	Jaffna	Ratnapura	Badulla	Batticaloa	Kalmunai**	Trincomalee	Anuradhapura	Avissawella	Haputale	Matala	Vavunnya	Kegalla	Male	Total
1958—																					
January ..	51,800	9,406	7,075	9,895	8,411	832	6,030	2,930	3,359	1,125	759	464	1,308	1,409	2,413	881	5,490	464	2,200	—	116,251
February	51,897	8,997	7,092	10,447	8,650	899	6,214	2,967	3,815	1,137	817	398	1,282	1,503	2,458	913	5,422	417	2,225	—	117,050
March ..	51,597	8,774	6,940	10,926	8,398	934	6,288	3,093	3,272	1,105	857	386	1,211	1,473	2,584	935	5,409	424	2,174	—	116,780
April ..	50,298	8,479	6,720	11,254	8,490	889	5,401	2,826	3,215	1,150	794	383	1,143	1,281	2,527	1,012	5,227	431	2,146	—	113,666
May ..	49,597	7,643	6,819	11,765	6,132	945	4,746	2,858	3,255	1,099	713	407	1,212	1,262	2,008	1,061	4,528	454	2,177	—	109,281
June ..	49,880	7,361	6,844	12,180	6,041	988	4,747	2,830	3,363	1,094	794	380	1,406	1,232	2,720	1,147	4,766	365	2,187	—	110,326
July ..	51,741	7,354	6,944	12,647	6,244	1,026	4,505	2,992	3,613	1,176	880	571	1,405	1,258	2,892	1,226	4,861	415	2,326	—	114,076
August ..	52,165	7,124	6,747	12,903	6,294	1,024	4,672	3,200	3,708	988	914	588	1,340	1,297	2,927	1,231	4,916	484	2,396	—	114,918
September	52,461	6,798	6,663	13,105	6,467	1,136	4,569	3,335	3,916	1,079	874	614	1,218	1,345	2,881	1,117	5,040	481	2,389	—	115,488
October ..	52,179	8,225	6,850	13,151	6,788	1,173	2,971	3,405	4,163	1,152	871	455	1,063	1,323	2,880	1,118	5,252	486	2,438	—	115,943
November	51,772	8,040	7,181	13,595	6,886	1,092	3,030	3,561	4,077	1,171	872	391	1,019	1,261	2,897	1,092	5,268	482	2,417	—	116,104
December	52,563	7,721	7,500	13,617	6,957	1,115	3,358	3,613	3,965	1,215	895	354	1,188	1,380	2,925	1,110	5,324	531	2,465	—	117,796
1959—																					
January ..	53,192	7,895	7,773	13,807	6,959	1,115	3,524	3,846	3,738	1,312	1,069	352	1,299	1,578	2,891	1,145	5,428	557	2,653	—	120,133
February	53,042	7,631	7,093	13,916	6,959	1,158	3,915	3,877	3,586	1,366	1,130	362	1,348	1,555	2,802	1,141	5,243	561	2,725	—	119,410
March ..	53,702	7,600	6,933	14,092	6,547	1,194	4,267	3,669	3,572	1,380	1,110	328	1,360	1,510	2,732	1,175	5,164	563	2,716	—	119,614
April ..	54,060	7,394	6,775	14,227	6,547	1,130	4,268	3,738	3,254	1,313	1,177	310	1,245	1,475	2,698	1,221	4,955	558	2,593	—	118,938
May ..	54,621	7,418	6,821	14,638	6,645	1,015	4,431	3,406	3,471	1,399	1,179	326	1,162	1,507	2,764	1,297	5,002	553	2,583	—	120,238
June ..	56,321	7,412	6,932	14,952	6,065	1,009	4,461	3,280	3,799	1,493	1,162	361	1,313	1,565	2,795	1,293	4,998	583	2,628	519	122,941
July ..	57,814	7,398	7,771	15,408	6,448	973	5,245	3,321	4,094	1,653	1,219	401	1,464	1,718	3,126	1,316	5,702	563	2,753	773	129,160

* Total includes 127 registered at Matugama, 164 at Chilaw, 272 at Matala, 97 at Avissawella, and 555 at Veyangoda.

† Total includes 141 registered at Matugama, 254 at Chilaw, and 240 at Avissawella. ‡ Revised figures. (These Exchanges functioned only during 1945 and 1946.)

§ Amended figures.

TABLE VI—The number of Persons placed in employment since 1939

Year		Technical and Clerical	Skilled	Semi-skilled	Unskilled	Total
1939	..	—	—	—	—	2,583
1940	..	—	—	—	—	5,089
1941	..	—	—	—	—	9,071
1942	..	—	—	—	—	8,129
1943	..	—	—	—	—	4,170
1944	..	—	—	—	—	1,875
1945	..	369	1,104	411	2,653	4,537
1946	..	1,303	3,012	1,341	10,130	15,786
1947	..	915	1,417	911	4,161	7,404
1948	..	1,355	1,563	1,311	6,118	10,347
1949	..	1,807	1,616	1,767	9,590	14,780
1950	..	2,059	1,509	1,488	5,773	10,779
1951	..	2,019	1,546	1,867	5,874	11,306
1952	..	3,107	1,802	1,887	5,657	12,453
1953	..	1,528	669	1,371	2,820	6,388
1954	..	1,097	879	922	4,660	7,558
1955	..	2,166	1,064	1,187	3,791	8,208
1956	..	1,913	845	1,565	4,162	8,485
1957	..	1,176	709	1,180	3,053	6,118
1958	..	1,827	800	1,006	2,251	5,884
1958	..					
	January	149	134	62	176	521
	February	146	45	101	180	472
	March	406	32	82	188	708
	April	145	64	72	202	483
	May	179	62	79	205	525
	June	91	76	74	139	380
	July	108	63	90	314	575
	August	132	66	71	173	442
	September	112	33	86	111	342
	October	158	142	118	204	622
	November	89	52	78	193	412
	December	112	31	93	166	402
1959	..					
	January	106	59	86	140	391
	February	196	67	98	199	560
	March	159	59	87	147	452
	April	194	64	81	169	508
	May	102	63	80	193	438
	June	96	58	111	276	541
	July	108	109	131	608	956

TABLE VII—The Number of Persons registered and the Number placed in employment during the Month of July, 1959

Employment Exchange	Technical and Clerical		Skilled		Semi-skilled		Unskilled		Total	
	Regd.	Placed	Regd.	Placed	Regd.	Placed	Regd.	Placed	Regd.	Placed
Colombo	762	33	594	47	1,255	62	3,120	88	5,701	230
Negombo	47	4	88	14	64	6	230	39	429	63
Kalutara	133	1	96	—	267	—	628	4	1,124	5
Galle	121	9	87	1	314	2	515	58	1,037	70
Kandy	94	6	64	5	195	21	506	209	859	241
Nawalapitiya	17	—	20	—	36	—	129	—	202	—
Kurunegala	82	15	59	6	198	4	806	35	1,145	60
Jaffna	131	4	32	1	110	15	170	—	443	20
Ratnapura	72	4	60	10	225	6	222	—	579	20
Badulla	32	—	21	2	56	2	100	10	209	14
Batticaloa	21	4	10	13	23	3	167	36	221	56
Kalmunai	11	3	5	—	26	—	22	9	64	12
Trincomalee	44	2	16	—	40	4	252	79	352	85
Anuradhapura	52	1	15	2	53	2	148	2	268	7
Avissawella	54	1	28	—	100	—	264	1	446	2
Haputale	5	—	10	—	25	1	52	10	92	11
Matara	122	5	97	—	226	—	696	4	1,141	9
Vavuniya	16	7	9	3	15	3	21	4	61	17
Kegalla	20	5	41	5	112	—	136	6	309	16
Matala	38	4	20	—	59	—	158	14	275	18
Total	1,874	108	1,372	109	3,369	131	8,342	608	14,957	956

TABLE VIII—STRIKES IN CEYLON SINCE 1939

Year	Plantations			Others		
	Number of Strikes	Number of Workers Involved	Number of Man-days Lost	Number of Strikes	Number of Workers Involved	Number of Man-days Lost
1939	.. 18	.. Not available	.. Not available	4	.. Not available	Not available
1940	.. 36	.. 9,732*	.. do.	8	.. do.	do.
1941	.. 27	.. 4,156	.. do.	15	.. do.	do.
1942	.. 8	.. 949	.. do.	14	.. do.	do.
1943	.. 22	.. 2,436	.. 5,234	31†	.. 4,550	.. 4,359
1944	.. 26	.. 3,648	.. 4,048½	66‡	.. 12,399	.. 25,937
1945	.. 28	.. 3,514	.. 4,285	53	.. 28,875	.. 153,388½
1946	.. 87	.. 15,259	.. 31,830½	69	.. 39,237	.. 250,866
1947	.. 53	.. 11,849	.. 199,657	52	.. 43,485	.. 544,174
1948	.. 33	.. 23,100	.. 49,933½	20	.. 1,065	.. 2,497½
1949	.. 66	.. 477,412	.. 681,340	28	.. 2,874	.. 14,576½
1950	.. 82	.. 22,808	.. 85,837	28	.. 5,471	.. 22,617
1951	.. 67	.. 306,091	.. 521,040	35	.. 6,726	.. 17,484
1952	.. 36	.. 5,355	.. 9,414	39	.. 6,168	.. 46,990
1953	.. 33	.. 363,600	.. 430,586	54	.. 14,482	.. 31,996
1954	.. 59	.. 86,450	.. 391,200	55	.. 15,381	.. 85,569
1955	.. 60	.. 11,437	.. 69,913	47	.. 11,293	.. 36,016
1956	.. 99	.. 56,908	.. 200,888	115	.. 31,852	.. 152,966
1957	.. 177	.. 297,061	.. 618,050	127	.. 70,239	.. 190,443
1958**	.. 123	.. 39,372	.. 340,632	80	.. 33,589	.. 384,769
1959 January to June	.. 83	.. 22,847	.. 114,645	36	.. 8,467	.. 47,748
1958 January	.. 10	.. 5,536	.. 195,212	7	.. 1,196	.. 1,122
February	.. 12	.. 2,720	.. 26,686	8	.. 398	.. 3,750
March	.. 11	.. 5,260	.. 10,447	15	.. 4,109	.. 25,375
April	.. 13	.. 3,671	.. 20,912	16	.. 5,338	.. 74,497
May	.. 8	.. 2,717	.. 5,361	12	.. 17,587	.. 262,107
June	.. Nil	.. —	.. —	1	.. 13	.. 169
July	.. Nil	.. —	.. —	1	.. 27	.. 81
August	.. 5	.. 388	.. 1,299	Nil	.. —	.. —
September	.. 14	.. 3,751	.. 22,199	3	.. 226	.. 432
October	.. 14	.. 4,104	.. 16,720	1	.. 150	.. 150
November	.. 18	.. 6,415	.. 26,265	3	.. 393	.. 1,440
December	.. 18	.. 4,810	.. 15,531	13	.. 4,152	.. 15,646
1959 January	.. 17	.. 3,666	.. 20,837	6	.. 2,825	.. 19,683
February	.. 13	.. 3,789	.. 10,566	10	.. 2,409	.. 14,429
March	.. 10	.. 4,115	.. 19,888	1	.. 130	.. 65
April	.. 17	.. 4,740	.. 23,181	3	.. 278	.. 833
May	.. 15	.. 4,062	.. 19,439	8	.. 505	.. 3,074
June	.. 11	.. 2,475	.. 20,734	8	.. 2,320	.. 9,664

*Number of workers involved in one strike is not available.

†Number of man-days lost in one strike is not available.

‡Number of workers involved and man-days lost in respect of one strike are not available.

**These statistics do not include particulars of strikes for the period August to December 1958 in respect of the employees of the Port (Cargo) Corporation. This information is not available.

From January, 1952, strikes involving less than 5 workers or lasting less than 1 day are excluded from the Statistics except in cases where the aggregate number of man-days lost exceed 50.

Note.—The number of strikes shown against each month relate to the number of strikes that ended during the month.

**TABLE IX—CLASSIFICATION OF THE STRIKES IN
JUNE, 1959, BY INDUSTRIES OR TRADES**

<i>Industry or Trade</i>	<i>Number of Strikes</i>		<i>Number of Workers involved</i>		<i>Number of Man-days lost</i>
Plantations—Tea	8	..	2,296	..	19,603
Rubber	1	..	103	..	880
Tea-cum-Rubber	1	..	51	..	51
Tea-cum-Cinnamon	1	..	25	..	200
Coconut-cum-Rubber	—	..	—	..	—
Total	11		2,475		20,734
Engineering	3	..	1,624	..	8,293
Printing	—	..	—	..	—
Motor Transport	1	..	601	..	983
Tea Export	—	..	—	..	—
Rubber Export	—	..	—	..	—
Coconut Manufacturing	1	..	58	..	290
Toddy, Arrack and Vinegar	—	..	—	..	—
Match Manufacturing	—	..	—	..	—
Coconut & Rubber Manufacturing	—	..	—	..	—
Cinema	1	..	5	..	5
Dock, Harbour and Port Transport	—	..	—	..	—
Building Trade	1	..	14	..	21
Local Government Services	1	..	18	..	72
Service Institutions	—	..	—	..	—
Factories, Workshops, &c., run by the State	—	..	—	..	—
Cottage Industry	—	..	—	..	—
Relief Schemes	—	..	—	..	—
Wholesale and Retail Distribution	—	..	—	..	—
Aerated Waters and Ice Manufacturing	—	..	—	..	—
Beedi Manufacturing	—	..	—	..	—
Hotel	—	..	—	..	—
Tile Manufacturing	—	..	—	..	—
Miscellaneous	—	..	—	..	—
Total	8		2,320		9,664
Grand Total	19		4,795		30,398

**TABLE X—CLASSIFICATION OF THE STRIKES IN
JUNE, 1959, IN CAUSES**

<i>Causes</i>	<i>Number of Strikes</i>		<i>Number of Workers Involved</i>	
	<i>Plantations</i>	<i>Others</i>	<i>Plantations</i>	<i>Others</i>
1. Dismissal or loss of employment in any way. Failure to provide work	3	.. 3	283	.. 2,139
2. Wage increases. Higher rates for piece work, &c.	—	.. —	—	.. —
3. Other wage disputes (e.g., delay in payment, cash advances, &c.)	1	.. 2	103	.. 32
4. Estate rules, working arrangements, discipline, disputes with sub-staff, &c.	3	.. 1	1,359	.. 5
5. Food matters. Welfare	2	.. —	313	.. —
6. Right of association and meeting	—	.. —	—	.. —
7. Fractional disputes and domestic matters	—	.. —	—	.. —
8. External matters (e.g., arrest by Police, &c.)	—	.. —	—	.. —
9. Assaults by employer or agent or others	1	.. —	392	.. —
10. General demands	1	.. 2	25	.. 144
11. Sympathetic strikes	—	.. —	—	.. —
Total	11	8	2,475	2,320

TABLE XI—ARRIVALS AND DEPARTURES OF INDIAN
ESTATE LABOURERS

Year	Arrivals			Departures			Excess of Arrivals over Departures	Excess of Departures over Arrivals
	Old	New	Total	Repatriated on Govt. Account	Left Ceylon Un-assisted	Total		
1939	25,425	3,834	29,259	2,975	31,714	34,689	—	5,430
1940	2,955	363	3,318	5,560	12,578	18,138	—	14,820
1941	3,234	350	3,584	8,410	11,243	19,653	—	16,069
1942	6,585	229	6,814	5,398	33,183	38,581	—	31,767
1943	42,677	2,076	44,753	1,368	59,577	60,945	—	16,192
1944	49,354	2,623	51,977	786	59,683	60,469	—	8,492
1945	82,598	3,844	86,442	572	85,428	86,000	442	—
1946	75,269	3,325	78,594	282	75,657	75,939	2,655	—
1947	52,177	2,400	54,577	242	58,381	58,623	—	4,046
1948	47,621	2,926	50,547	151	47,115	47,266	3,281	—
1949	42,188	2,237	44,425	302	46,538	46,840	—	2,417
1950	49,385	1,525	50,910	267	55,360	55,627	—	4,717
1951	53,218	1,503	54,721	203	58,591	58,794	—	4,073
1952	55,530	1,717	57,247	317	58,132	58,449	—	120
1953	40,761	1,160	41,921	379	45,963	46,342	—	4,421
1954	26,550	577	27,127	223	25,143	25,366	1,761	—
1955	902	—	902	75	3,166	3,241	—	2,339
1956	2,360	3	2,363	85	4,608	4,693	—	2,330
1957	1,068	4	1,072	104	4,849	4,953	—	3,881
1958	—	—	94	22	1,412	1,434	—	1,340

1958—

January*	—	—	—	—	—	—	—	—
February*	—	—	—	—	—	—	—	—
March	—	—	14	6	6	12	2	—
April	—	—	27	—	103	103	—	76
May	—	—	10	6	221	227	—	217
June	—	—	8	—	260	260	—	252
July	—	—	13	4	235	239	—	226
August	—	—	18	5	207	212	—	194
September	—	—	1	—	119	119	—	118
October	—	—	1	—	143	143	—	142
November	—	—	2	—	73	73	—	71
December	—	—	—	1	45	46	—	46

* Not available.

1959—

January	—	—	10	—	172	172	—	162
February	—	—	—	5	89	94	—	94
March	—	—	—	—	98	98	—	98
April	—	—	—	—	136	136	—	136
May	—	—	—	—	127	127	—	127
June	—	—	4	10	59	69	—	65
July	—	—	10	1	46	47	—	37

APPENDIX I

Statement showing the Minimum Rates of Wages payable to Workers in different Trades for which Wages Boards have been established

<i>Class of Worker</i>	<i>Month: Sept., 1959</i>					
	<i>Basic Wage</i>		<i>Special Allowance</i>		<i>Total</i>	
	<i>Rs.</i>	<i>c.</i>	<i>Rs.</i>	<i>c.</i>	<i>Rs.</i>	<i>c.</i>
Tea Growing and Manufacturing Trade						
<i>Daily Rates :</i>						
Male worker not under 16 years	..	1 25	..	1 18	..	2 43
Female worker not under 15 years	..	1 5	..	0 88	..	1 93
Child worker	0 80	..	0 81	..	1 61
 Cocoa, Cardamom and Pepper Growing and Manufacturing Trade						
<i>Daily Rates :</i>						
Male worker not under 16 years	1 10	..	1 18	..	2 28
Female worker not under 15 years	..	0 90	..	0 88	..	1 78
Child worker	0 65	..	0 81	..	1 46
 Rubber Growing and Manufacturing Trade						
<i>Daily Rates :</i>						
Male worker not under 16 years	..	1 40	..	1 18	..	2 58
Female worker not under 15 years	..	1 30	..	0 88	..	2 18
Child worker	1 5	..	0 81	..	1 86
 Coconut Growing Trade						
<i>Daily Rates :</i>						
The raising and maintenance of a coconut plantation ; and the manufacture of copra—						
Kangany	1 15	..	1 18	..	2 33
Male not under 16 years	1 0	..	1 18	..	2 18
Female not under 15 years	0 85	..	0 88	..	1 73
Male worker under 16 years or Female worker under 15 years	0 75	..	0 81	..	1 56
 Coconut Manufacturing Trade						
The manufacture of desiccated coconut :						
The manufacture of coconut oil ; and						
The manufacture of fibre and coir products—						
Kangany	1 80	..	2 3	..	3 83
Male not under 18 years	1 40	..	2 3	..	3 43
Female not under 18 years	1 15	..	1 68	..	2 83
Worker under 18 years	1 15	..	1 61	..	2 76

Piece rates have been fixed for certain processes.

Class of Worker	Basic Wage		Special Allowance		Total
	Rs.	c.	Rs.	c.	
Printing Trade (contd.)					
Class A—3rd year learner ..	56	0	59	92	115 92
.. B ..	49	0	56	02	105 02
.. C Grade I, 3rd year learner ..	36	0	50	17	86 17
.. C .. II,	32	0	47	15	79 15
.. D—3rd year learner ..	28	0	44	32	72 32
Class A—4th year learner ..	71	0	72	12	143 12
.. B ..	64	0	65	20	129 20
.. C Grade I, 4th year learner ..	44	0	58	03	102 03
.. C .. II,	39	0	54	25	93 25
.. D—4th year learner ..	34	0	50	67	84 67
Class A—5th year learner ..	88	0	84	82	172 82

* The corresponding figures for the month of August published in Appendix I of the Labour Gazette for August, 1959, should read as 76-92 and not 76.42.

Cigar Trade

A piece rate of Rs. 8.0 has been fixed for every 1,000 cigars rolled.

Plumbago Trade

Daily Rates :

Underground workers—

Basses	2 75	..	1 24	..	3 99
Kanganies }	2 25	..	1 24	..	3 49
Loaders }	2 25	..	1 24	..	3 49
Overseers }	2 8	..	1 24	..	3 32
Shift bosses	2 8	..	1 24	..	3 32
Blasters }	2 0	..	1 24	..	3 24
Drillers (hand and machine) }	2 0	..	1 24	..	3 24
Shaft drivers }	2 0	..	1 24	..	3 24
Stoppers (excavators) }	2 0	..	1 24	..	3 24
Timbermen }	2 0	..	1 24	..	3 24
Muckers }	1 50	..	1 24	..	2 74
Trolleyman }	1 50	..	1 24	..	2 74
Unskilled labourers }	1 50	..	1 24	..	2 74
Onsetters or Donakatarayas	2 25	..	1 24	..	3 49

Underground and surface workers—

Electricians }	2 50	..	1 24	..	3 74
Enginemen }	2 50	..	1 24	..	3 74
Fitters }	2 50	..	1 24	..	3 74
Hoistmen }	2 50	..	1 24	..	3 74
Mechanics }	2 50	..	1 24	..	3 74
Pumpmen }	2 50	..	1 24	..	3 74
Winchmen }	2 50	..	1 24	..	3 74
Checkers	2 25	..	1 24	..	3 49
Electricians (assistants) }	1 50	..	1 24	..	2 74
Fitters (assistants) }	1 50	..	1 24	..	2 74
Windlassmen (dabare workers) }	1 50	..	1 24	..	2 74

Surface workers—

Carpenters }	2 50	..	1 24	..	3 74
Masons }	2 50	..	1 24	..	3 74
Overseers	2 25	..	1 24	..	3 49
Blacksmiths }	2 0	..	1 24	..	3 24
Boilermen }	2 0	..	1 24	..	3 24
Drill sharpeners }	2 0	..	1 24	..	3 24
Firewood carriers and splitters	1 60	..	1 24	..	2 84
Carters }	1 50	..	1 24	..	2 74
Watchers }	1 50	..	1 24	..	2 74
Bakkikarayas or Banksmen	2 0	..	1 24	..	3 24
Cooks }	1 24	..	1 24	..	2 48
Smithy boys }	1 24	..	1 24	..	2 48
Unskilled labourers }	1 24	..	1 24	..	2 48

N.B.—Workers under 18 years of age performing any of the above tasks are entitled to a special allowance of only 85 cents.

Class of Worker	Basic Wage		Special Allowance		Total	
	Rs.	c.	Rs.	c.	Rs.	c.
Plumbago Trade (contd.)						
Workers employed in curing and dressing—						
(A) as overseers and kanganies	..	2 0	..	1 44	..	3 44
(B) on different jobs						
Within the Colombo area—						
Male worker not under 18 years	..	1 25	..	1 44	..	2 69
Female worker not under 18 years	..	1 0	..	1 12	..	2 12
Worker under 18 years	..	0 50	..	1 05	..	1 55
Outside the Colombo area—						
Male worker not under 18 years	..	1 0	..	1 44	..	2 44
Female worker not under 18 years	..	0 84	..	1 12	..	1 96
Worker under 18 years	..	0 40	..	1 05	..	1 45
"Colombo area" includes any place within 5 miles of the Municipal Limits of Colombo.						

Tea Export Trade

Daily Rates :

A. Male workers not under 18 years—						
(a) Grade II	..	1 40	..	2 6	..	3 46
(b) Intermediate Grade	..	1 60	..	2 16	..	3 76
(c) Grade I	..	1 80	..	2 16	..	3 96
(d) Box makers and repairers	..	1 60	..	2 16	..	3 76
(e) Watchers	..	1 70	..	2 16	..	3 86
B. Female workers not under 18 years						
..	..	1 15	..	1 94	..	3 09
C. Workers over 14 years but under 15 years						
..	..	0 80	..	1 55	..	2 35
" 15	" 16	0 90	..	1 60
" 16	" 17	1 0	..	1 65
" 17	" 18	1 15	..	1 75
						2 90

Rubber Export Trade

Daily Rates :

A. Male workers not under 18 years—						
(a) Grade II	..	1 40	..	2 6	..	3 46
(b) Intermediate Grade	..	1 60	..	2 16	..	3 76
(c) Grade I	..	1 80	..	2 16	..	3 96
(d) Watchers	..	1 70	..	2 16	..	3 86
B. Female workers not under 18 years of age—						
(a) Grade II						
Workers employed in work other than sorting	..	1 15	..	1 94	..	3 09
(b) Grade I						
Workers employed in sorting	..	1 30	..	1 94	..	3 24
C. Workers over 14 years but under 15 years						
..	..	0 80	..	1 55	..	2 35
" 15	" 16	0 90	..	1 60
" 16	" 17	1 0	..	1 65
" 17	" 18	1 15	..	1 75
						2 90

Class of Worker	Basic Wage		Special Allowance		Total
	Rs.	c.	Rs.	c.	Rs. c.
Toddy, Arrack and Vinegar Trade					
<i>Monthly Rates :</i>					
Tope kangany ..	115	0	—	..	115 0
Toddy tavern watcher ..	63	0	—	..	63 0
Arrack tavern watcher ..	63	0	—	..	63 0
Tope watcher ..	50	0	—	..	50 0
Collecting station manager ..	75	0	—	..	75 0
Selling toddy at tavern ..	80	0	—	..	80 0
Selling arrack at tavern ..	75	0	—	..	75 0
Collecting toddy from trees in the toddy section of the trade ..	80	0	—	..	80 0
Collecting toddy from trees in the arrack section of the trade ..	52	50	—	..	52 50
Collecting toddy from trees in the vinegar section of the trade ..	52	50	—	..	52 50
Distilling toddy at distillery ..	90	0	—	..	90 0

Daily Rates

Bottling, corking and labelling arrack bottles—

(a) for a male worker not under 16 years of age	2	50	..	—	..	2 50
(b) for a female worker not under 16 years of age	2	0	..	—	..	2 0

Unskilled labourers—

Male workers not under 16 years	2	50	..	—	..	2 50
Female workers not under 16 years	2	0	..	—	..	2 0

Piece rates have been fixed for certain processes.

Motor Transport Trade

Monthly Rates

Class A Workers : Drivers of omnibuses licensed to carry over 22 passengers ..	100	0	..	61	42	..	161 42
Class B Workers : Drivers of omnibuses licensed to carry 22 passengers and under, drivers of ambulances, and drivers of lorries (other than those owned by an estate and used solely for internal transport within the estate) and vans with a licensed payload of over 20 cwt. ..	90	0	..	61	42	..	151 42
Class C Workers : Drivers of hiring cars and cabs, drivers of lorries (other than those owned by an estate and used solely for internal transport within the estate) and vans with a licensed payload of 20 cwt. and under, and drivers of hearses ..	85	0	..	58	92	..	143 92
Class D Workers : Drivers of lorries with trailers (including those of the Scammel-Horse type but excluding those owned by an estate and used solely for internal transport within the estate) ..	100	0	..	61	42	..	161 42

Class of Worker	Basic Wage		Special Allowance		Total	
	Rs.	c.	Rs.	c.	Rs.	c.
Motor Transport Trade—(contd.)						
Class E Workers : Drivers of lorries owned by an estate and used solely for internal transport within the estate	70	0	56	42	126	42
Class F Workers : Conductors, clerks, cashiers, ticket clerks or booking clerks, employed in omnibuses	67	50	61	42	128	92
Class G Workers : Cleaners * and porters † of lorries with a licensed payload of over 20 cwt. ..	60	0	57	52	117	52
Class H Workers : Cleaners * and porters † of lorries with a licensed payload of 20 cwt. and under, omnibuses, hiring cars, cabs, vans, ambulances and hearses	50	0	57	52	107	52
Class I Workers : Omnibus checkers or time-keepers	60	0	57	52	117	52
Class J Workers : Omnibus Inspectors and omnibus stand supervisors	90	0	57	52	147	52
Class K Workers : Porters engaged by employers who use the motor transport trade as incidental to the carrying on of some other trade and workers in the motor transport trade other than workers specified in the preceding items	45	0	47	92	92	92

* "cleaners" means workers employed (otherwise than in clerical capacities) in connection with the maintenance of the mechanism of lorries, omnibuses, hiring cars, cabs, vans, ambulances or hearses.

† "porters" means workers employed in loading or unloading goods into or from lorries, omnibuses, hiring cars, cabs, vans, ambulances or hearses, and required to travel in the vehicles in the performance of their work.

Daily Rates

Class A worker	4	0	2	57	6	57
" B "	4	0	2	57	6	57
" C "	3	25	2	57	5	82
" D "	4	0	2	57	6	57
" E "	2	75	2	32	5	07
" F "	2	75	2	57	5	32
" G "	2	50	2	57	5	07
" H "	2	25	2	57	4	82
" K "	1	50	1	79	3	29

N.B.—Monthly rates for permanent workers and daily rates for temporary workers.

Match Manufacturing Trade

Daily Rates

Grade I—

Male 18 years and over	2	0	1	79	3	79
Female 18 years and over	1	64	1	69	3	33
Young person 14 years and over but under 18 years	1	25	1	38	2	63

Grade II—

Male 18 years and over	1	60	1	79	3	39
Female 18 years and over	1	32	1	69	3	01
Young person 14 years and over but under 18 years	1	0	1	38	2	38

Month : Sept., 1959

Class of Worker	Basic Wage		Special Allowance		Total
	Rs.	c.	Rs.	c.	
Match Manufacturing Trade—(contd.)					
<i>Grade III—</i>					
Male 18 years and over	1	40	1	69	3 09
Female 18 years and over	1	15	1	57	2 72
Young person over 14 and under 16 years	0	70	1	17	1 87
Young person 16 and over but under 18 years	0	90	1	38	2 28
<i>Grade IV—</i>					
Watcher	1	70	1	79	49

Cinema Trade

Within the Municipal Areas

A—Non-clerical—

Unskilled	36	50	53	44	89 94
Semi-skilled	43	0	56	04	99 04
Skilled Grade II	55	0	57	86	112 86
Skilled Grade I	66	0	57	86	123 86

B—Clerical—

Grade III	50	0	53	00	103 00
Grade II	55	0	56	00	111 00
Grade I	110	0	61	00	171 00

Outside the Municipal Areas

A—Non-clerical—

Unskilled	36	50	53	44	89 94
Semi-skilled	40	0	56	04	96 04
Skilled Grade II	47	0	57	86	104 86
Skilled Grade I	61	0	57	86	118 86

B—Clerical—

Grade III	45	0	53	00	98 00
Grade II	50	0	56	00	106 00
Grade I	110	0	61	00	171 00

Dock, Harbour and Port Transport Trade

Manual Work—

Special Grade	65	0	34	00	99 00
Skilled Grade	55	0	30	00	85 00
Semi-skilled Grade	45	0	27	00	72 00
Unskilled Grade I	37	0	27	00	64 00
Unskilled Grade II	31	0	27	00	58 00

Women Workers—

Female Kanganies	35	0	27	00	62 00
Female labourers	30	0	27	00	57 00

Non-manual Workers—

Special Grade	75	0	40	00	115 00
Grade I	55	0	30	00	85 00

Month : Sept., 1959

Class of Worker	Month : Sept., 1959		Total Rs. c.
	Basic Wage Rs. c.	Special Allowance Rs. c.	
Building Trade			
Unskilled—			
Male labourers—			
Not under 18 years	1 40 ..	2 06 ..	3 46
Female labourers—			
Not under 18 years	1 10 ..	2 06 ..	3 16
Unskilled labourers— (irrespective of sex)			
Under 18 years of age	0 90 ..	2 06 ..	2 96
Semi-skilled Grade II	1 65 ..	2 16 ..	3 81
Semi-skilled Grade I	1 80 ..	2 16 ..	3 96
Skilled	2 0 ..	2 16 ..	4 16

Beedi Manufacturing Trade

“ Nool ” beedi rolling (inclusive of preparation of wrappers for rolling)—

1,000 beedies each 2 inches long	3 50
1,000 beedies each 2½ inches long	4 0
1,000 beedies each 3 inches long	4 75

“ Nool ” beedi rolling (exclusive of the preparation of wrappers for rolling)—

1,000 beedies each 2 inches long	2 0
1,000 beedies each 2½ inches long	2 25
1,000 beedies each 3 inches long	2 75

Cutting wrapping leaves (inclusive of the preparation of wrappers for rolling)—

1,000 beedies each 2 inches long	1 50
1,000 beedies each 2½ inches long	1 75
1,000 beedies each 3 inches long	2 0

Baking Trade

Monthly Rates

Class “ A ” Worker : foreman, cooks, “ short eats ” makers, pastry makers, cake decorators	70 0 ..	57 90 ..	127 90
Class “ B ” Worker : dough mixers, scalers and weighers, divider men, twisters, pie men, pastry men, pie machine operators, friers, butter and icing mixers, icers, wrapping machine operators	55 0 ..	53 75 ..	108 75
Class “ C ” Worker : flour dumpers, flour sifters, rolling machine men, sugar grinders, bench hands, pan greasers, panners, bread trayers, bun trayers, cake trayers, bread slicers, fruit and vegetable cleaners, cream fillers, oven helpers, oven loaders, pan stackers, bread and bun stackers, cake stackers, cutters, crust cleaners, hand wrappers, packers, general helpers, and deliverymen	39 0 ..	41 53 ..	80 53

APPENDIX II (A)

Ready Reckoner showing the Basic Wages, Special Allowances and the Minimum Wages payable for the number of days worked during September, 1959, to workers in the Tea Growing and Manufacturing Trade

No. of Days	Men			Women			Child Workers *			No. of Days
	Basic Wage	Special Allowance	Minimum Wage	Basic Wage	Special Allowance	Minimum Wage	Basic Wage	Special Allowance	Minimum Wage	
	Rs. c.	Rs. c.	Rs. c.	Rs. c.	Rs. c.	Rs. c.	Rs. c.	Rs. c.	Rs. c.	
1/2	0 62½	0 59	1 21½	0 52½	0 44	0 96½	0 40	0 40½	0 80½	1/2
1	1 25	1 18	2 43	1 05	0 88	1 93	0 80	0 81	1 61	1
2	2 50	2 36	4 86	2 10	1 76	3 86	1 60	1 62	3 22	2
3	3 75	3 54	7 29	3 15	2 64	5 79	2 40	2 43	4 83	3
4	5 00	4 72	9 72	4 20	3 52	7 72	3 20	3 24	6 44	4
5	6 25	5 90	12 15	5 25	4 40	9 65	4 00	4 05	8 05	5
6	7 50	7 08	14 58	6 30	5 28	11 58	4 80	4 86	9 66	6
7	8 75	8 26	17 01	7 35	6 16	13 51	5 60	5 67	11 27	7
8	10 00	9 44	19 44	8 40	7 04	15 44	6 40	6 48	12 88	8
9	11 25	10 62	21 87	9 45	7 92	17 37	7 20	7 29	14 49	9
10	12 50	11 80	24 30	10 50	8 80	19 30	8 00	8 10	16 10	10
11	13 75	12 98	26 73	11 55	9 68	21 23	8 80	8 91	17 71	11
12	15 00	14 16	29 16	12 60	10 56	23 16	9 60	9 72	19 32	12
13	16 25	15 34	31 59	13 65	11 44	25 09	10 40	10 53	20 93	13
14	17 50	16 52	34 02	14 70	12 32	27 02	11 20	11 34	22 54	14
15	18 75	17 70	36 45	15 75	13 20	28 95	12 00	12 15	24 15	15
16	20 00	18 88	38 88	16 80	14 08	30 88	12 80	12 96	25 76	16
17	21 25	20 06	41 31	17 85	14 96	32 81	13 60	13 77	27 37	17
18	22 50	21 24	43 74	18 90	15 84	34 74	14 40	14 58	28 98	18
19	23 75	22 42	46 17	19 95	16 72	36 67	15 20	15 39	30 59	19
20	25 00	23 60	48 60	21 00	17 60	38 60	16 00	16 20	32 20	20
21	26 25	24 78	51 03	22 05	18 48	40 53	16 80	17 01	33 81	21
22	27 50	25 96	53 46	23 10	19 36	42 46	17 60	17 82	35 42	22
23	28 75	27 14	55 89	24 15	20 24	44 39	18 40	18 63	37 03	23
24	30 00	28 32	58 32	25 20	21 12	46 32	19 20	19 44	38 64	24
25	31 25	29 50	60 75	26 25	22 00	48 25	20 00	20 25	40 25	25
26	32 50	30 68	63 18	27 30	22 88	50 18	20 80	21 06	41 86	26
27	33 75	31 86	65 61	28 35	23 76	52 11	21 60	21 87	43 47	27
28	35 00	33 04	68 04	29 40	24 64	54 04	22 40	22 68	45 08	28
29	36 25	34 22	70 47	30 45	25 52	55 97	23 20	23 49	46 69	29
30	37 50	35 40	72 90	31 50	26 40	57 90	24 00	24 30	48 30	30

* A "child worker" means a male worker under 16 years of age or a female worker under 15 years of age.

APPENDIX II (B)

Ready Reckoner showing the Basic Wages, Special Allowances and the Minimum Wages payable for the number of days worked during September, 1959, to workers in the Rubber Growing and Manufacturing Trade

No. of Days	Men			Women			Child Workers*			No. of Days
	Basic Wage	Special Allowance	Minimum Wage	Basic Wage	Special Allowance	Minimum Wage	Basic Wage	Special Allowance	Minimum Wage	
	Rs. c.	Rs. c.	Rs. c.	Rs. c.	Rs. c.	Rs. c.	Rs. c.	Rs. c.	Rs. c.	
½	0 70	0 59	1 29	0 65	0 44	1 09	0 52½	0 40½	0 93	½
1	1 40	1 18	2 58	1 30	0 88	2 18	1 05	0 81	1 86	1
2	2 80	2 36	5 16	2 60	1 76	4 36	2 10	1 62	3 72	2
3	4 20	3 54	7 74	3 90	2 64	6 54	3 15	2 43	5 58	3
4	5 60	4 72	10 32	5 20	3 52	8 72	4 20	3 24	7 44	4
5	7 00	5 90	12 90	6 50	4 40	10 90	5 25	4 05	9 30	5
6	8 40	7 08	15 48	7 80	5 28	13 08	6 30	4 86	11 16	6
7	9 80	8 26	18 06	9 10	6 16	15 26	7 35	5 67	13 02	7
8	11 20	9 44	20 64	10 40	7 04	17 44	8 40	6 48	14 88	8
9	12 60	10 62	23 22	11 70	7 92	19 62	9 45	7 29	16 74	9
10	14 00	11 80	25 80	13 00	8 80	21 80	10 50	8 10	18 60	10
11	15 40	12 98	28 38	14 30	9 68	23 98	11 55	8 91	20 46	11
12	16 80	14 16	30 96	15 60	10 56	26 16	12 60	9 72	22 32	12
13	18 20	15 34	33 54	16 90	11 44	28 34	13 65	10 53	24 18	13
14	19 60	16 52	36 12	18 20	12 32	30 52	14 70	11 34	26 04	14
15	21 00	17 70	38 70	19 50	13 20	32 70	15 75	12 15	27 90	15
16	22 40	18 88	41 28	20 80	14 08	34 88	16 80	12 96	29 76	16
17	23 80	20 06	43 86	22 10	14 96	37 06	17 85	13 77	31 62	17
18	25 20	21 24	46 44	23 40	15 84	39 24	18 90	14 58	33 48	18
19	26 60	22 42	49 02	24 70	16 72	41 42	19 95	15 39	35 34	19
20	28 00	23 60	51 60	26 00	17 60	43 60	21 00	16 20	37 20	20
21	29 40	24 78	54 18	27 30	18 48	45 78	22 05	17 01	39 06	21
22	30 80	25 96	56 76	28 60	19 36	47 96	23 10	17 82	40 92	22
23	32 20	27 14	59 34	29 90	20 24	50 14	24 15	18 63	42 78	23
24	33 60	28 32	61 92	31 20	21 12	52 32	25 20	19 44	44 64	24
25	35 00	29 50	64 50	32 50	22 00	54 50	26 25	20 25	46 50	25
26	36 40	30 68	67 08	33 80	22 88	56 68	27 30	21 06	48 36	26
27	37 80	31 86	69 66	35 10	23 76	58 86	28 35	21 87	50 22	27
28	39 20	33 04	72 24	36 40	24 64	61 04	29 40	22 68	52 08	28
29	40 60	34 22	74 82	37 70	25 52	63 22	30 45	23 49	53 94	29
30	42 00	35 40	77 40	39 00	26 40	65 40	31 50	24 30	55 80	30

* A "child worker" means a male worker under 16 years of age or a female worker under 15 years of age.

APPENDIX II (C)

Ready Reckoner showing the Basic Wages, Special Allowances and the Minimum Wages payable for the number of days worked during September, 1959, to workers in the Cocoa, Cardamom and Pepper Growing and Manufacturing Trade

No. of Days	Men			Women			Child Workers *			No. of Days
	Basic Wage	Special Allowance	Minimum Wage	Basic Wage	Special Allowance	Minimum Wage	Basic Wage	Special Allowance	Minimum Wage	
	Rs. c.	Rs. c.	Rs. c.	Rs. c.	Rs. c.	Rs. c.	Rs. c.	Rs. c.	Rs. c.	
½	0 55	0 59	1 14	0 45	0 44	0 89	0 32½	0 40½	0 73	½
1	1 10	1 18	2 28	0 90	0 88	1 78	0 65	0 81	1 46	1
2	2 20	2 36	4 56	1 80	1 76	3 56	1 30	1 62	2 92	2
3	3 30	3 54	6 84	2 70	2 64	5 34	1 95	2 43	4 38	3
4	4 40	4 72	9 12	3 60	3 52	7 12	2 60	3 24	5 84	4
5	5 50	5 90	11 40	4 50	4 40	8 90	3 25	4 05	7 30	5
6	6 60	7 08	13 68	5 40	5 28	10 68	3 90	4 86	8 76	6
7	7 70	8 26	15 96	6 30	6 16	12 46	4 55	5 67	10 22	7
8	8 80	9 44	18 24	7 20	7 04	14 24	5 20	6 48	11 68	8
9	9 90	10 62	20 52	8 10	7 92	16 02	5 85	7 29	13 14	9
10	11 00	11 80	22 80	9 00	8 80	17 80	6 50	8 10	14 60	10
11	12 10	12 98	25 08	9 90	9 68	19 58	7 15	8 91	16 06	11
12	13 20	14 16	27 36	10 80	10 56	21 36	7 80	9 72	17 52	12
13	14 30	15 34	29 64	11 70	11 44	23 14	8 45	10 53	18 98	13
14	15 40	16 52	31 92	12 60	12 32	24 92	9 10	11 34	20 44	14
15	16 50	17 70	34 20	13 50	13 20	26 70	9 75	12 15	21 90	15
16	17 60	18 88	36 48	14 40	14 08	28 48	10 40	12 96	23 36	16
17	18 70	20 06	38 76	15 30	14 96	30 26	11 05	13 77	24 82	17
18	19 80	21 24	41 04	16 20	15 84	32 04	11 70	14 58	26 28	18
19	20 90	22 42	43 32	17 10	16 72	33 82	12 35	15 39	27 74	19
20	22 00	23 60	45 60	18 00	17 60	35 60	13 00	16 20	29 20	20
21	23 10	24 78	47 88	18 90	18 48	37 38	13 65	17 01	30 66	21
22	24 20	25 96	50 16	19 80	19 36	39 16	14 30	17 82	32 12	22
23	25 30	27 14	52 44	20 70	20 24	40 94	14 95	18 63	33 58	23
24	26 40	28 32	54 72	21 60	21 12	42 72	15 60	19 44	35 04	24
25	27 50	29 50	57 00	22 50	22 00	44 50	16 25	20 25	36 50	25
26	28 60	30 68	59 28	23 40	22 88	46 28	16 90	21 06	37 96	26
27	29 70	31 86	61 56	24 30	23 76	48 06	17 55	21 87	39 42	27
28	30 80	33 04	63 84	25 20	24 64	49 84	18 20	22 68	40 88	28
29	31 90	34 22	66 12	26 10	25 52	51 62	18 85	23 49	42 34	29
30	33 00	35 40	68 40	27 00	26 40	53 40	19 50	24 30	43 80	30

* A "child worker" means a male worker under 16 years of age or a female worker under 15 years of age.

APPENDIX III (A)

**Ready Reckoner showing the Minimum Wages payable for the
number of days worked during Sept., 1959, to workers in
the Coconut Growing and Manufacturing Trade**

No. of Days	The Coconut Growing Trade				The Coconut Manufacturing Trade				No. of Days
	Kan-gany	Male	Fe-male	Young Per-son	Kan-gany	Male	Fe-male	Young Per-son	
	Rs. c.	Rs. c.	Rs. c.	Rs. c.	Rs. c.	Rs. c.	Rs. c.	Rs. c.	
½	1 16½	1 09	0 86½	0 78	1 91½	1 71½	1 41½	1 38	½
1	2 33	2 18	1 73	1 56	3 83	3 43	2 83	2 76	1
2	4 66	4 36	3 46	3 12	7 66	6 86	5 66	5 52	2
3	6 99	6 54	5 19	4 68	11 49	10 29	8 49	8 28	3
4	9 32	8 72	6 92	6 24	15 32	13 72	11 32	11 04	4
5	11 65	10 90	8 65	7 80	19 15	17 15	14 15	13 80	5
6	13 98	13 08	10 38	9 36	22 98	20 58	16 98	16 56	6
7	16 31	15 26	12 11	10 92	26 81	24 01	19 81	19 32	7
8	18 64	17 44	13 84	12 48	30 64	27 44	22 64	22 08	8
9	20 97	19 62	15 57	14 04	34 47	30 87	25 47	24 84	9
10	23 30	21 80	17 30	15 60	38 30	34 30	28 30	27 60	10
11	25 63	23 98	19 03	17 16	42 13	37 73	31 13	30 36	11
12	27 96	26 16	20 76	18 72	45 96	41 16	33 96	33 12	12
13	30 29	28 34	22 49	20 28	49 79	44 59	36 79	35 88	13
14	32 62	30 52	24 22	21 84	53 62	48 02	39 62	38 64	14
15	34 95	32 70	25 95	23 40	57 45	51 45	42 45	41 40	15
16	37 28	34 88	27 68	24 96	61 28	54 88	45 28	44 16	16
17	39 61	37 06	29 41	26 52	65 11	58 31	48 11	46 92	17
18	41 94	39 24	31 14	28 08	68 94	61 74	50 94	49 68	18
19	44 27	41 42	32 87	29 64	72 77	65 17	53 77	52 44	19
20	46 60	43 60	34 60	31 20	76 60	68 60	56 60	55 20	20
21	48 93	45 78	36 33	32 76	80 43	72 03	59 43	57 96	21
22	51 26	47 96	38 06	34 32	84 26	75 46	62 26	60 72	22
23	53 59	50 14	39 79	35 88	88 09	78 89	65 09	63 48	23
24	55 92	52 32	41 52	37 44	91 92	82 32	67 92	66 24	24
25	58 25	54 50	43 25	39 00	95 75	85 75	70 75	69 00	25
26	60 58	56 68	44 98	40 56	99 58	89 18	73 58	71 76	26
27	62 91	58 86	46 71	42 12	103 41	92 61	76 41	74 52	27
28	65 24	61 04	48 44	43 68	107 24	96 04	79 24	77 28	28
29	67 57	63 22	50 17	45 24	111 07	99 47	82 07	80 04	29
30	69 90	65 40	51 90	46 80	114 90	102 90	84 90	82 80	30

Note.—“Male” refers to male workers not under 18 years of age; “Female” to female workers not under 18 years of age and “Young Persons” to workers under 18 years of age in the Coconut Manufacturing Trade. In the Coconut Growing Trade, “Male”, “Female” and “Child Workers” refer to male workers not under 16 years of age; Female workers not under 15 years of age and Young Persons to male workers under 16 years of age and female workers under 15 years of age respectively.

APPENDIX III (B)

Ready Reckoner showing the Minimum Wages payable for the
number of days worked during Sept., 1959, to workers in
the Rubber Export Trade

No. of Days	Male Workers not under 18 years of age				Female Worker not under 18 years of age		Workers (irrespective of sex) under 18 years of age				No. of Days
	Grade II	Inter- mediate Grade	Grade I	Watch- ers	Grade II	Grade I	over 14 under 15 years	over 15 under 16 years	over 16 under 17 years	over 17 under 18 years	
	Rs. c.	Rs. c.	Rs. c.	Rs. c.	Rs. c.	Rs. c.	Rs. c.	Rs. c.	Rs. c.	Rs. c.	
½	1 73	1 88	1 98	1 93	1 54½	1 62	1 17½	1 25	1 32½	1 45	½
1	3 46	3 76	3 96	3 86	3 09	3 24	2 35	2 50	2 65	2 90	1
2	6 92	7 52	7 92	7 72	6 18	6 48	4 70	5 00	5 30	5 80	2
3	10 38	11 28	11 88	11 58	9 27	9 72	7 05	7 50	7 95	8 70	3
4	13 84	15 04	15 84	15 44	12 36	12 96	9 40	10 00	10 60	11 60	4
5	17 30	18 80	19 80	19 30	15 45	16 20	11 75	12 50	13 25	14 50	5
6	20 76	22 56	23 76	23 16	18 54	19 44	14 10	15 00	15 90	17 40	6
7	24 22	26 32	27 72	27 02	21 63	22 68	16 45	17 50	18 55	20 30	7
8	27 68	30 08	31 68	30 88	24 72	25 92	18 80	20 00	21 20	23 20	8
9	31 14	33 84	35 64	34 74	27 81	29 16	21 15	22 50	23 85	26 10	9
10	34 60	37 60	39 60	38 60	30 90	32 40	23 50	25 00	26 50	29 00	10
11	38 06	41 36	43 56	42 46	33 99	35 64	25 85	27 50	29 15	31 90	11
12	41 52	45 12	47 52	46 32	37 08	38 88	28 20	30 00	31 80	34 80	12
13	44 98	48 88	51 48	50 18	40 17	42 12	30 55	32 50	34 45	37 70	13
14	48 44	52 64	55 44	54 04	43 26	45 36	32 90	35 00	37 10	40 60	14
15	51 90	56 40	59 40	57 90	46 35	48 60	35 25	37 50	39 75	43 50	15
16	55 36	60 16	63 36	61 76	49 44	51 84	37 60	40 00	42 40	46 40	16
17	58 82	63 92	67 32	65 62	52 53	55 08	39 95	42 50	45 05	49 30	17
18	62 28	67 68	71 28	69 48	55 62	58 32	42 30	45 00	47 70	52 20	18
19	65 74	71 44	75 24	73 34	58 71	61 56	44 65	47 50	50 35	55 10	19
20	69 20	75 20	79 20	77 20	61 80	64 80	47 00	50 00	53 00	58 00	20
21	72 66	78 96	83 16	81 06	64 89	68 04	49 35	52 50	55 65	60 90	21
22	76 12	82 72	87 12	84 92	67 98	71 28	51 70	55 00	58 30	63 80	22
23	79 58	86 48	91 08	88 78	71 07	74 52	54 05	57 50	60 95	66 70	23
24	83 04	90 24	95 04	92 64	74 16	77 76	56 40	60 00	63 60	69 60	24
25	86 50	94 00	99 00	96 50	77 25	81 00	58 75	62 50	66 25	72 50	25
26	89 96	97 76	102 96	100 36	80 34	84 24	61 10	65 00	68 90	75 40	26
27	93 42	101 52	106 92	104 22	83 43	87 48	63 45	67 50	71 55	78 30	27
28	96 88	105 28	110 88	108 08	86 52	90 72	65 80	70 00	74 20	81 20	28
29	100 34	109 04	114 84	111 94	89 61	93 96	68 15	72 50	76 85	84 10	29
30	103 80	112 80	118 80	115 80	92 70	97 20	70 50	75 00	79 50	87 00	30

APPENDIX III (C)

**Ready Reckoner showing the Minimum Wages payable for the
number of days worked during Sept., 1959, to workers in
the Tea Export Trade**

No. of Days	Male Workers not under 18 years of age					Female Workers not under 18 years of age	Workers (irrespective of sex) under 18 years of age				No. of Days
	Grade II	Inter-mediate Grade	Grade I	Box Makers and Repairers	Watchers		over 14 under 15 years	over 15 under 16 years	over 16 under 17 years	over 17 under 18 years	
	Rs. c.	Rs. c.	Rs. c.	Rs. c.	Rs. c.		Rs. c.	Rs. c.	Rs. c.	Rs. c.	
1	1 73	1 88	1 98	1 88	1 93	1 54½	1 17½	1 25	1 32½	1 45	1
2	3 46	3 76	3 96	3 76	3 86	3 09	2 35	2 50	2 65	2 90	2
3	6 92	7 52	7 92	7 52	7 72	6 18	4 70	5 00	5 30	5 80	3
4	10 38	11 28	11 88	11 28	11 58	9 27	7 05	7 50	7 95	8 70	4
5	13 84	15 04	15 84	15 04	15 44	12 36	9 40	10 00	10 60	11 60	5
6	17 30	18 80	19 80	18 80	19 30	15 45	11 75	12 50	13 25	14 50	6
7	20 76	22 56	23 76	22 56	23 16	18 54	14 10	15 00	15 90	17 40	7
8	24 22	26 32	27 72	26 32	27 02	21 63	16 45	17 50	18 55	20 30	8
9	27 68	30 08	31 68	30 08	30 88	24 72	18 80	20 00	21 20	23 20	9
10	31 14	33 84	35 64	33 84	34 74	27 81	21 15	22 50	23 85	26 10	10
11	34 60	37 60	39 60	37 60	38 60	30 90	23 50	25 00	26 50	29 00	11
12	38 06	41 36	43 56	41 36	42 46	33 99	25 85	27 50	29 15	31 90	12
13	41 52	45 12	47 52	45 12	46 32	37 08	28 20	30 00	31 80	34 80	13
14	44 98	48 88	51 48	48 88	50 18	40 17	30 55	32 50	34 45	37 70	14
15	48 44	52 64	55 44	52 64	54 04	43 26	32 90	35 00	37 10	40 60	15
16	51 90	56 40	59 40	56 40	57 90	46 35	35 25	37 50	39 75	43 50	16
17	55 36	60 16	63 36	60 16	61 76	49 44	37 60	40 00	42 40	46 40	17
18	58 82	63 92	67 32	63 92	65 62	52 53	39 95	42 50	45 05	49 30	18
19	62 28	67 68	71 28	67 68	69 48	55 62	42 30	45 00	47 70	52 20	19
20	65 74	71 44	75 24	71 44	73 34	58 74	44 65	47 50	50 35	55 10	20
21	69 20	75 20	79 20	75 20	77 20	61 80	47 00	50 00	53 00	58 00	21
22	72 66	78 96	83 16	78 96	81 06	64 89	49 35	52 50	55 65	60 90	22
23	76 12	82 72	87 12	82 72	84 92	67 98	51 70	55 00	58 30	63 80	23
24	79 58	86 48	91 08	86 48	88 78	71 07	54 05	57 50	60 95	66 70	24
25	83 04	90 24	95 04	90 24	92 64	74 16	56 40	60 00	63 60	69 60	25
26	86 50	94 00	99 00	94 00	96 50	77 25	58 75	62 50	66 25	72 50	26
27	89 96	97 76	102 96	97 76	100 36	80 34	61 10	65 00	68 90	75 40	27
28	93 42	101 52	106 92	101 52	104 22	83 43	63 45	67 50	71 55	78 30	28
29	96 88	105 28	110 88	105 28	108 08	86 52	65 80	70 00	74 20	81 20	29
30	100 34	109 04	114 84	109 04	111 94	89 61	68 15	72 50	76 85	84 10	30
30	103 80	112 80	118 80	112 80	115 80	92 70	70 50	75 00	79 50	87 00	30

APPENDIX III (D)

**Ready Reckoner showing the Minimum Wages payable for the
number of days worked during Sept., 1959, to workers in
the Engineering Trade**

No. of Days	Un-skilled	Semi-skilled		Skilled	Kan-ganics	Watch-ers	Trade Learners and Apprentices				No. of Days
		Grade I	Grade II				1st Year	2nd Year	3rd Year	4th Year	
	Rs. c.	Rs. c.	Rs. c.	Rs. c.	Rs. c.	Rs. c.	Rs. c.	Rs. c.	Rs. c.	Rs. c.	
½	1 73½	1 90½	1 80½	2 08	1 98	1 93	0 81	0 94	1 18½	1 38½	½
1	3 46	3 81	3 61	4 16	3 96	3 86	1 62	1 88	2 37	2 77	1
2	6 92	7 62	7 22	8 32	7 92	7 72	3 24	3 76	4 74	5 54	2
3	10 38	11 43	10 83	12 48	11 88	11 58	4 86	5 64	7 11	8 31	3
4	13 84	15 24	14 44	16 64	15 84	15 44	6 48	7 52	9 48	11 08	4
5	17 30	19 05	18 05	20 80	19 80	19 30	8 10	9 40	11 85	13 85	5
6	20 76	22 86	21 66	24 96	23 76	23 16	9 72	11 28	14 22	16 62	6
7	24 22	26 67	25 27	29 12	27 72	27 02	11 34	13 16	16 59	19 39	7
8	27 68	30 48	28 88	33 28	31 68	30 88	12 96	15 04	18 96	22 13	8
9	31 14	34 29	32 49	37 44	35 64	34 74	14 58	16 92	21 33	24 93	9
10	34 60	38 10	36 10	41 60	39 60	38 60	16 20	18 80	23 70	27 70	10
11	38 06	41 91	39 71	45 76	43 56	42 46	17 82	20 68	26 07	30 47	11
12	41 52	45 72	43 32	49 92	47 52	46 32	19 44	22 56	28 44	33 24	12
13	44 98	49 53	46 93	54 08	51 48	50 18	21 06	24 44	30 81	36 01	13
14	48 44	53 34	50 54	58 24	55 44	54 04	22 68	26 32	33 18	38 78	14
15	51 90	57 15	54 15	62 40	59 40	57 90	24 30	28 20	35 55	41 55	15
16	55 36	60 96	57 76	66 56	63 36	61 76	25 92	30 08	37 92	44 32	16
17	58 82	64 77	61 37	70 72	67 32	65 62	27 54	31 96	40 29	47 09	17
18	62 28	68 58	64 98	74 88	71 28	69 48	29 16	33 84	42 66	49 86	18
19	65 74	72 39	68 59	79 04	75 24	73 34	30 78	35 72	45 03	52 63	19
20	69 20	76 20	72 20	83 20	79 20	77 20	32 40	37 60	47 40	55 40	20
21	72 66	80 01	75 81	87 36	83 16	81 06	34 02	39 48	49 77	58 17	21
22	76 12	83 82	79 42	91 52	87 12	84 92	35 64	41 36	52 14	60 94	22
23	79 58	87 63	83 03	95 68	91 08	88 78	37 26	43 24	54 51	63 71	23
24	83 04	91 44	86 64	99 84	95 04	92 64	38 88	45 12	56 88	66 48	24
25	86 50	95 25	90 25	104 00	99 00	96 50	40 50	47 00	59 25	69 25	25
26	89 96	99 06	93 86	108 16	102 96	100 36	42 12	48 88	61 62	72 02	26
27	93 42	102 87	97 47	112 32	106 92	104 22	43 74	50 76	63 99	74 79	27
28	96 88	106 68	101 08	116 48	110 88	108 08	45 36	52 64	66 36	77 56	28
29	100 34	110 49	104 69	120 64	114 84	111 94	46 98	54 52	68 73	80 33	29
30	103 80	114 30	108 30	124 80	118 80	115 80	48 60	56 40	71 10	83 10	30

APPENDIX III (E)

Ready Reckoner showing the Minimum Wages payable for the number of days worked during Sept., 1959, to workers in the Match Manufacturing Trade

No. of Days	Grade I			Grade II			Grade III				Grade IV	No. of Days
	Adults		Young Persons Over 14 Under 18 Years	Adults		Young Persons Over 14 Under 18 Years	Adults		Young Persons		Watchers	
	Male	Female		Male	Female		Male	Female	Over 14 Under 16 Years	Over 16 Under 18 Years		
	Rs. c.	Rs. c.	Rs. c.	Rs. c.	Rs. c.	Rs. c.	Rs. c.	Rs. c.	Rs. c.	Rs. c.	Rs. c.	
1/2	1 89 1/2	1 66 1/2	1 31 1/2	1 69 1/2	1 50 1/2	1 19	1 54 1/2	1 36	0 93 1/2	1 14	1 74 1/2	1/2
1	3 79	3 33	2 63	3 39	3 01	2 38	3 09	2 72	1 87	2 28	3 49	1
2	7 58	6 66	5 26	6 78	6 02	4 76	6 18	5 44	3 74	4 56	6 98	2
3	11 37	9 99	7 89	10 17	9 03	7 14	9 27	8 16	5 61	6 84	10 47	3
4	15 16	13 32	10 52	13 56	12 04	9 52	12 36	10 88	7 48	9 12	13 96	4
5	18 95	16 65	13 15	16 95	15 05	11 90	15 45	13 60	9 35	11 40	17 45	5
6	22 74	19 98	15 78	20 34	18 06	14 28	18 54	16 32	11 22	13 68	20 94	6
7	26 53	23 31	18 41	23 73	21 07	16 66	21 63	19 04	13 09	15 96	24 43	7
8	30 32	26 64	21 04	27 12	24 08	19 04	24 72	21 76	14 96	18 24	27 92	8
9	34 11	29 97	23 67	30 51	27 09	21 42	27 81	24 48	16 83	20 52	31 41	9
10	37 90	33 30	26 30	33 90	30 10	23 80	30 90	27 20	18 70	22 80	34 90	10
11	41 69	36 63	28 93	37 29	33 11	26 18	33 99	29 92	20 57	25 08	38 39	11
12	45 48	39 96	31 56	40 68	36 12	28 56	37 08	32 64	22 44	27 36	41 88	12
13	49 27	43 29	34 19	44 07	39 13	30 94	40 17	35 36	24 31	29 64	45 37	13
14	53 06	46 62	36 82	47 46	42 14	33 32	43 26	38 08	26 18	31 92	48 86	14
15	56 85	49 95	39 45	50 85	45 15	35 70	46 35	40 80	28 05	34 20	52 35	15
16	60 64	53 28	42 08	54 24	48 16	38 08	49 44	43 52	29 92	36 48	55 84	16
17	64 43	56 61	44 71	57 63	51 17	40 46	52 53	46 24	31 79	38 76	59 33	17
18	68 22	59 94	47 34	61 02	54 18	42 84	55 62	48 96	33 66	41 04	62 82	18
19	72 01	63 27	49 97	64 41	57 19	45 22	58 71	51 68	35 53	43 32	66 31	19
20	75 80	66 60	52 60	67 80	60 20	47 60	61 80	54 40	37 40	45 60	69 80	20
21	79 59	69 93	55 23	71 19	63 21	49 98	64 89	57 12	39 27	47 88	73 29	21
22	83 38	73 26	57 86	74 58	66 22	52 36	67 98	59 84	41 14	50 16	76 78	22
23	87 17	76 59	60 49	77 97	69 23	54 74	71 07	62 56	43 01	52 44	80 27	23
24	90 96	79 92	63 12	81 36	72 24	57 12	74 16	65 28	44 88	54 72	83 76	24
25	94 75	83 25	65 75	84 75	75 25	59 50	77 25	68 00	46 75	57 00	87 25	25
26	98 54	86 58	68 38	88 14	78 26	61 88	80 34	70 72	48 62	59 28	90 74	26
27	102 33	89 91	71 01	91 53	81 27	64 26	83 43	73 44	50 49	61 56	94 23	27
28	106 12	93 24	73 64	94 92	84 28	66 64	86 52	76 16	52 36	63 84	97 72	28
29	109 91	96 57	76 27	98 31	87 29	69 02	89 61	78 88	54 23	66 12	101 21	29
30	113 70	99 90	78 90	101 70	90 30	71 40	92 70	81 60	56 10	68 40	104 70	30

APPENDIX III (F)

**Ready Reckoner showing the Minimum Wages payable for the
number of days worked during Sept., 1959, to workers in
the Building Trade**

<i>No. of Days</i>	<i>Unskilled</i>			<i>Semi-skilled</i>		<i>Skilled</i>	<i>No. of Days</i>
	<i>Male</i>	<i>Female</i>	<i>Young Persons</i>	<i>Grade II</i>	<i>Grade I</i>		
	<i>Rs. c.</i>	<i>Rs. c.</i>	<i>Rs. c.</i>	<i>Rs. c.</i>	<i>Rs. c.</i>	<i>Rs. c.</i>	
½	1 73	1 58	1 48	1 90½	1 98	2 08	½
1	3 46	3 16	2 96	3 81	3 96	4 16	1
2	6 92	6 32	5 92	7 62	7 92	8 32	2
3	10 38	9 48	8 88	11 43	11 88	12 48	3
4	13 84	12 64	11 84	15 24	15 84	16 64	4
5	17 30	15 80	14 80	19 05	19 80	20 80	5
6	20 76	18 96	17 76	22 86	23 76	24 96	6
7	24 22	22 12	20 72	26 67	27 72	29 12	7
8	27 68	25 28	23 68	30 48	31 68	33 28	8
9	31 14	28 44	26 64	34 29	35 64	37 44	9
10	34 60	31 60	29 60	38 10	39 60	41 60	10
11	38 06	34 76	32 56	41 91	43 56	45 76	11
12	41 52	37 92	35 52	45 72	47 52	49 92	12
13	44 98	41 08	38 48	49 53	51 48	54 08	13
14	48 44	44 24	41 44	53 34	55 44	58 24	14
15	51 90	47 40	44 40	57 15	59 40	62 40	15
16	55 36	50 56	47 36	60 96	63 36	66 56	16
17	58 82	53 72	50 32	64 77	67 32	70 72	17
18	62 28	56 88	53 28	68 58	71 28	74 88	18
19	65 74	60 04	56 24	72 39	75 24	79 04	19
20	69 20	63 20	59 20	76 20	79 20	83 20	20
21	72 66	66 36	62 16	80 01	83 16	87 36	21
22	76 12	69 52	65 12	83 82	87 12	91 52	22
23	79 58	72 68	68 08	87 63	91 08	95 68	23
24	83 04	75 84	71 04	91 44	95 04	99 84	24
25	86 50	79 00	74 00	95 25	99 00	104 00	25
26	89 96	82 16	76 96	99 06	102 96	108 16	26
27	93 42	85 32	79 92	102 87	106 92	112 32	27
28	96 88	88 48	82 88	106 68	110 88	116 48	28
29	100 34	91 64	85 84	110 49	114 84	120 64	29
30	103 80	94 80	88 80	114 30	118 80	124 80	30

“Unskilled Male” means a male unskilled labourer not under 18 years of age.
 “Unskilled Female” means a female unskilled labourer not under 18 years of age.
 “Unskilled Young Person” means a labourer (irrespective of sex) under 18 years of age.

APPENDIX III (G)

Ready Reckoner showing the Minimum Wages payable for the number
of days worked during Sept., 1959, to Daily-paid workers in
the Motor Transport Trade

No. of Days	Class A Class B Class D	Class C	Class E Class G	Class F	Class H	Class K	No. of Days
	Rs. c.	Rs. c.	Rs. c.	Rs. c.	Rs. c.	Rs. c.	
†	3 28½	2 91	2 53½	2 66	2 41	1 64½	†
1	6 57	5 82	5 07	5 32	4 82	3 29	1
2	13 14	11 64	10 14	10 64	9 64	6 58	2
3	19 71	17 46	15 21	15 96	14 46	9 87	3
4	26 28	23 28	20 28	21 28	19 28	13 16	4
5	32 85	29 10	25 35	26 60	24 10	16 45	5
6	39 42	34 92	30 42	31 92	28 92	19 74	6
7	45 99	40 74	35 49	37 24	33 74	23 03	7
8	52 56	46 56	40 56	42 56	38 56	26 32	8
9	59 13	52 38	45 63	47 88	43 38	29 61	9
10	65 70	58 20	50 70	53 20	48 20	32 90	10
11	72 27	64 02	55 77	58 52	53 02	36 19	11
12	78 84	69 84	60 84	63 84	57 84	39 48	12
13	85 41	75 66	65 91	69 16	62 66	42 77	13
14	91 98	81 48	70 98	74 48	67 48	46 06	14
15	98 55	87 30	76 05	79 80	72 30	49 35	15
16	105 12	93 12	81 12	85 12	77 12	52 64	16
17	111 69	98 94	86 19	90 44	81 94	55 93	17
18	118 26	104 76	91 26	95 76	86 76	59 22	18
19	124 83	110 58	96 33	101 08	91 58	62 51	19
20	131 40	116 40	101 40	106 40	96 40	65 80	20
21	137 97	122 22	106 47	111 72	101 22	69 09	21
22	144 54	128 04	111 54	117 04	106 04	72 38	22
23	151 11	133 86	116 61	122 36	110 86	75 67	23
24	157 68	139 68	121 68	127 68	115 68	78 96	24
25	164 25	145 50	126 75	133 00	120 50	82 25	25
26	170 82	151 32	131 82	138 32	125 32	85 54	26
27	177 39	157 14	136 89	143 64	130 14	88 83	27
28	183 96	162 96	141 96	148 96	134 96	92 12	28
29	190 53	168 78	147 03	154 28	139 78	95 41	29
30	197 10	174 60	152 10	159 60	144 60	98 70	30

APPENDIX IV (A)

Ready Reckoner showing the Minimum Wages payable for the number of days worked during Sept., 1959, to Monthly-paid workers in the Motor Transport Trade

<i>No. of Days</i>	<i>Class A</i>	<i>Class B</i>	<i>Class C</i>	<i>Class E</i>	<i>Class F</i>	<i>Class G</i>	<i>Class H</i>	<i>Class J</i>	<i>Class K</i>	<i>No. of Days</i>
	<i>Class D</i>					<i>Class I</i>				
	<i>Rs. c.</i>	<i>Rs. c.</i>	<i>Rs. c.</i>	<i>Rs. c.</i>	<i>Rs. c.</i>	<i>Rs. c.</i>	<i>Rs. c.</i>	<i>Rs. c.</i>	<i>Rs. c.</i>	
½	3 10½	2 91	2 77	2 43	2 48	2 26	2 07	2 83½	1 78½	½
1	6 21	5 82	5 54	4 86	4 96	4 52	4 14	5 67	3 57	1
2	12 42	11 65	11 07	9 72	9 92	9 04	8 27	11 35	7 15	2
3	18 63	17 47	16 61	14 59	14 88	13 56	12 41	17 02	10 72	3
4	24 83	23 30	22 14	19 45	19 83	18 08	16 54	22 70	14 30	4
5	31 04	29 12	27 68	24 31	24 79	22 60	20 68	28 37	17 87	5
6	37 25	34 94	33 21	29 17	29 75	27 12	24 81	34 04	21 44	6
7	43 46	40 77	38 75	34 04	34 71	31 64	28 95	39 72	25 02	7
8	49 67	46 59	44 28	38 90	39 67	36 16	33 08	45 39	28 59	8
9	55 88	52 41	49 82	43 76	44 63	40 68	37 22	51 06	32 16	9
10	62 08	58 24	55 35	48 62	49 58	45 20	41 35	56 74	35 74	10
11	68 29	64 06	60 89	53 49	54 54	49 72	45 49	62 41	39 31	11
12	74 50	69 89	66 42	58 35	59 50	54 24	49 62	68 09	42 89	12
13	80 71	75 71	71 96	63 21	64 46	58 76	53 76	73 76	46 46	13
14	86 92	81 53	77 50	68 07	69 42	63 28	57 90	79 43	50 03	14
15	93 13	87 36	83 03	72 93	74 38	67 80	62 03	85 11	53 61	15
16	99 34	93 18	88 57	77 80	79 34	72 32	66 17	90 78	57 18	16
17	105 54	99 01	94 10	82 66	84 29	76 84	70 30	96 46	60 76	17
18	111 75	104 83	99 64	87 52	89 25	81 36	74 44	102 13	64 33	18
19	117 96	110 65	105 17	92 38	94 21	85 88	78 57	107 80	67 90	19
20	124 17	116 48	110 71	97 25	99 17	90 40	82 71	113 48	71 48	20
21	130 38	122 30	116 24	102 11	104 13	94 92	86 84	119 15	75 05	21
22	136 59	128 12	121 78	106 97	109 09	99 44	90 98	124 82	78 62	22
23	142 79	133 95	127 31	111 83	114 04	103 96	95 11	130 50	82 20	23
24	149 00	139 77	132 85	116 70	119 00	108 48	99 25	136 17	85 77	24
25	155 21	145 60	138 38	121 56	123 96	113 00	103 38	141 85	89 35	25
26	161 42	151 42	143 92	126 42	128 92	117 52	107 52	147 52	92 92	26
27	171 11	160 51	152 56	134 01	136 66	124 57	113 97	156 37	98 50	27
28	180 80	169 60	161 20	141 60	144 40	131 62	120 42	165 22	104 08	28
29	190 49	178 69	169 84	149 19	152 14	138 67	126 87	174 07	109 66	29
30	200 18	187 78	178 48	156 78	159 88	145 72	133 32	182 92	115 24	30

APPENDIX IV (B)

Ready Reckoner showing the Minimum Wages payable for the number of days worked during Sept., 1959, to workers in the Baking Trade

<i>No. of Days</i>	<i>Class A</i>	<i>Class B</i>	<i>Class C</i>	<i>No. of Days</i>
	<i>Rs. c.</i>	<i>Rs. c.</i>	<i>Rs. c.</i>	
½	2 46	2 09	1 55	½
1	4 92	4 18	3 10	1
2	9 84	8 37	6 19	2
3	14 76	12 55	9 29	3
4	19 68	16 73	12 39	4
5	24 60	20 91	15 49	5
6	29 52	25 10	18 58	6
7	34 43	29 28	21 68	7
8	39 35	33 46	24 78	8
9	44 27	37 64	27 88	9
10	49 19	41 83	30 97	10
11	54 11	46 01	34 07	11
12	59 03	50 19	37 17	12
13	63 95	54 37	40 27	13
14	68 87	58 56	43 36	14
15	73 79	62 74	46 46	15
16	78 71	66 92	49 56	16
17	83 63	71 11	52 65	17
18	88 55	75 29	55 75	18
19	93 47	79 47	58 85	19
20	98 38	83 65	61 95	20
21	103 30	87 84	65 04	21
22	108 22	92 02	68 14	22
23	113 14	96 20	71 24	23
24	118 06	100 38	74 34	24
25	122 98	104 57	77 43	25
26	127 90	108 75	80 53	26

NATIONAL AND GRINDLAYS BANK LIMITED

(Incorporated in the United Kingdom. The Liability of Members is Limited.)

Head Office

26, BISHOPSGATE, LONDON E. C. 2

Bankers to the Government in Kenya, Uganda,
Zanzibar, Aden and Somaliland Protectorate.

The Bank transacts General Banking and Exchange Business of every description with the principal commercial cities of the world.

Safe Deposit Lockers, the letting of which is not restricted to the Bank's constituents, are available at the Main Office in Colombo for the storage of valuables under the personal control of hirers. Terms may be obtained on application.

A Travel Department is available at Grindlays Branch, York Street, Colombo, where air and sea passages may be booked to any part of the world and personal and baggage insurance effected. Letters of Credit or Travellers' Cheques may be obtained from any office of the Bank.

Savings Bank Accounts may be opened with any of our branches in Ceylon. Interest is allowed at two per cent. per annum.

Main Office : 37, YORK STREET

Grindlays Branch : 11, YORK STREET

Also Agencies at Kandy and Nuwara Eliya

A. L. SIMPSON, *Manager*

IT PAYS TO ADVERTISE

IN THE
CEYLON LABOUR GAZETTE

STATE BANK OF INDIA

Constituted in India under the State Bank of India Act 1955

The liability of members is limited

Authorized Capital	Rs. 20,00,00,000
Paid up Capital	Rs. 5,62,50,000
Reserve Fund & Other Reserves	Rs. 7,00,00,000

Central Office

POST BOX NO. 12
BOMBAY

Local Head Offices

CALCUTTA BOMBAY MADRAS NEW DELHI

London Office

25, OLD BROAD STREET, E. C. 2

Over 750 Offices throughout India, Burma, Pakistan & Ceylon

1. The Bank transacts every description of Banking Business and has correspondents in all the Principal Cities of the world.
2. State Bank of India Travellers' cheques are freely encashable throughout its wide network of branches and by its numerous correspondents, all leading Hotels, Travel Agencies & Stores.
3. Advances are made against Securities, Gold Ornaments, Bullion, Goods, &c.
4. Income Tax Returns prepared and claims made on behalf of constituents.

Colombo Branch

16, PRINCE STREET

I. R. CLEGHORN,
Agent.

THE VITAL ROLE OF CEMENT

In the drama of a nation's aspirations to prosperity and future security, the part played by cement must surely be of paramount importance.

For in the brave new edifices that rise to the sky; in the massive dams that help to transform rivers into hydro-power; in the aqueducts and the channels that bring precious water to the cultivator; in all these cement plays a vital role, forming as it were, the very back bone of a nation's bid for lasting economic well-being.

Structures that will stand the test of time require cement of the best quality. Kankesan cement surpasses by a very liberal margin the British Standard Specification No. 12 of 1958. Continuous laboratory tests determine and check accurately the proportions and quality of the ingredients. This meticulous scrutiny guarantees a high degree of excellence in the finished product.

When you use Kankesan you can be certain that you are using a product of the highest quality equal to that of the best cements in the world.

CEYLON CEMENT CORPORATION

49/17, Iceland Building, Colombo 3.

T'phone : 79050 & 79287

Kankesanturai 'Phone : 26 & 95

Always at your Service,

Your obedient Servants

ARNOLD'S

- * CARBON PAPERS AND RIBBONS for typewriters
- * RUBBER STAMP PADS * ENDORSING INKS
- * LINEN MARKING INK * STICCO PASTE
- * ADESCO GUM

Renowned throughout the world for quality

Contact us for your requirements

PROVINCIAL SUPPLIERS LTD.

125, MAIN ST.,

Tel. 78653

COLOMBO

FOR TYRE RETREADING

TYREMART

CEYLON LIMITED

713, Baseline Road, Colombo

Phone : 4549

1853



1959

The Chartered Bank was incorporated in England by Royal Charter on 29th December, 1853, and during the ensuing century, its system of Branches has been progressively extended to most centres of commercial importance throughout Southern and South Eastern Asia and the Far East. At all these Branches a complete banking service is available and, in particular, facilities are provided for the financing of international trade in co-operation with the Bank's offices in the United Kingdom, its Agencies in New York and Hamburg, and a world-wide range of Banking correspondents.

Head Office : 38, BISHOPSGATE, LONDON, E. C. 2

THE CHARTERED BANK

For more than One Hundred Years the Standard Bearer of the British Financial Tradition in the East

Branches of the Eastern Bank Ltd., a wholly-owned subsidiary of The Chartered Bank, are established in Iraq, Bahrain, Qatar [Persian Gulf], Lebanon and Hadramaut and in India Pakistan, Aden Singapore, Malaya and Ceylon.

Colombo Branch :

17, QUEEN STREET

F. G. WERNHAM, *Manager*

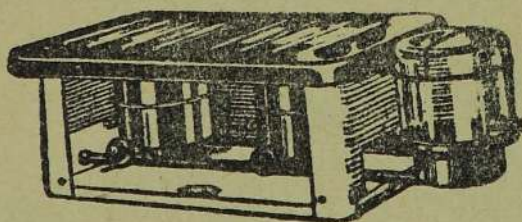
FALKS WICKLESS OIL COOKERS

HAVE MANY ADVANTAGES !

Smooth rounded corners for easy cleaning.

Heavy-Gauge Kettle Rests—removable for cleaning—suitable for large and small pans.

Extra-wide 14 In. Cooking Platform pressed from single sheet of metal.



2 Burner model Rs. 75/-

3 Burner model Rs. 115/-

Heavy glass oil container 3½-pint capacity, held securely by bottle holder.

Removable cap to facilitate cleaning of supply pipe.

Regulating valve gives any desired flame from simmer to boll.

Sole Agents for Ceylon

HUNTERS

P. O. Box 214

HUNTER & COMPANY LTD.

Tel: 5297-9

- Wages Board Registers
- Shop Act Books
- Maternity Benefit Books
- Workman's Compensation Forms
- Estate Checkrolls, Etc.

Are available from stock

THE NADARAJA PRESS

Printers, Stationers, Publishers

GALLE ROAD, COLPETTY

Telephone : 5432

COLOMBO

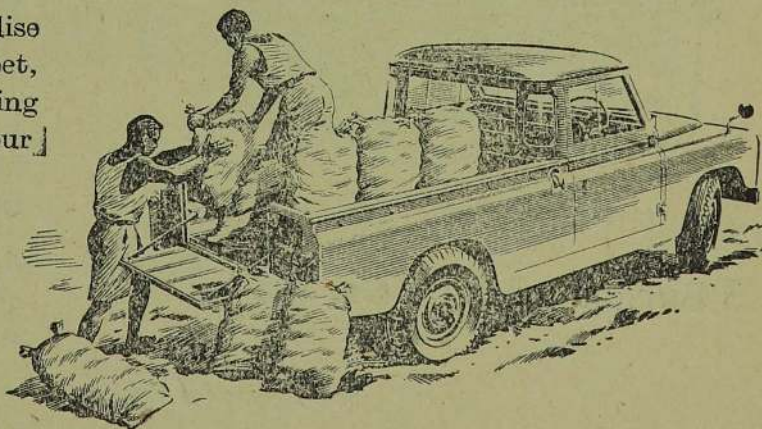
P. O. Box 432

If you have more than three kinds of vehicle in your fleet then it's time you took a closer look at the *New*

LAND – ROVERS

You're wrong if you think you need different vehicles for fetching, carrying and towing in different kinds of country. The tough and versatile Land-Rovers can do it all. They've spent the past ten years proving it in the most difficult territories in the world.

The more you standardise the vehicles in your fleet, the lower your operating costs will be. Your fleet will be smaller, maintenance will be simpler, spares will be interchangeable.



Distributed by:

COLONIAL MOTORS LTD.

UNION PLACE, COLOMBO 2

THE EASTERN BANK LIMITED

(Incorporated in England. Liability of Shareholders Limited)

WHOLLY-OWNED SUBSIDIARY OF THE CHARTERED BANK

Incorporated by Royal Charter 1853

5 & 7 MAIN STREET, COLOMBO

Subscribed Capital	£2,000,000
Paid-up Capital	£1,000,000
Reserve Fund	£1,500,000
Reserve Liability of Shareholders	£1,000,000

Head Office

2 & 3, CROSBY SQUARE, LONDON, E. C. 3

Branches

CEYLON, PERSIAN GULF, IRAQ, INDIA, MALAYA, PAKISTAN, ADEN, LEBANON

The Bank conducts every description of Banking Business and has Correspondents in all the Principal Cities of the World.

Current Accounts are opened and Fixed Deposits received on terms which may be ascertained on application.

Savings Deposit Accounts opened, Interest two per cent. per annum.

Safe Deposit Vault. Safes for the storage of Documents, Jewellery, &c., are under the hirers' own control at rates from Rs. 20 per annum. The letting of Safes is not restricted to regular clients of the Bank and they may be visited as often as desired. A well-equipped room is available for the convenience of the renter wishing to examine the contents of his safe in private and there is also an inner vault for storing bulky articles at rates to be obtained on application.

The Manager's personal advice is always available to callers.

D. A. RAMSAY,
Manager, Colombo.

Rebuild your

FERGUSON TRACTOR TYRES

with

INDUSTRIAL & AGRICULTURAL

TREAD DESIGN

TYRECRAFT LIMITED

P. O. BOX No. 1113

COLOMBO 2

Phone : 4846

Grams : 'Gentyreco'

AN ASBESTOS ROOF

is cheaper, saves timber,

saves labour, lasts a life time

Use

" ELEPHANT "

BRAND

Asbestos Cement Products

Manufactured at Ratmalana by :

ASBESTOS CEMENT INDUSTRIES LIMITED

175, ARMOUR STREET, COLOMBO 12

Now Available

from

**THE CEYLON BREWERY LIMITED
NUWARA ELIYA**

BREWERS DRIED YEAST—

**The ideal addition in Poultry,
Cattle and Pig food.**

Sold by the hundredweight.

Retail in 10, 5 and 2 lb. packets.

Retail Stockists in Colombo —

MOOSAJEES, ALSTON PLACE

FOR YOUR STAFF & LABOUR REQUIREMENTS

Consult

THE NEAREST EMPLOYMENT EXCHANGE

- ★ The service of the Employment Exchange will cost you nothing—It is absolutely free, to the employer and to the worker.
- ★ By using the Exchange you will save the time and expense otherwise wasted in considering unsuitable applicants ; instead you will be able to make your final choice from a limited number of workers carefully selected to suit your needs.
- ★ A complete classified record of persons available for employment is maintained at the Exchange. The qualifications and experience of each individual are indicated in the records.
- ★ When workers are urgently required at short notice, large parties of workers can usually be supplied without delay.

Employment Exchanges function in the following Towns :—

- | | |
|---------------------------|----------------|
| ★ COLOMBO ('Phone : 2466) | ★ KEGALLE |
| ★ KANDY | ★ KURUNEGALA |
| ★ GALLE | ★ RATNAPURA |
| ★ JAFFNA | ★ NEGOMBO |
| ★ KALUTARA | ★ VAVUNIYA |
| ★ MATARA | ★ HAPUTALE |
| ★ AVISSAWELLA | ★ BADULLA |
| ★ BATTICALOA | ★ NAWALAPITIYA |
| ★ TRINCOMALEE | ★ KALMUNAI |
| ★ ANURADHAPURA | ★ CHILAW |
| ★ HATTON | |

Baur's *Fertilisers*

for:

- ECONOMY
- EFFICIENCY
- RELIABILITY

Free Expert Advice available on all
matters of Planting, Manuring and
Plant Protection



A. BAUR & CO., LTD.

The Ceylon Manure Works

COLOMBO

P. O. Box 11

Tel. 78251-4 (4 lines)